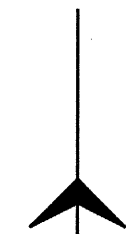


ROUTE NO.	SECTION	COUNTY	TOTAL SHEETS	SHEET NO.
MONTICELLO RD. CH 18 (FAS 530)	07-00419-00-RS	CHAMPAIGN	162	21
STA.	TO STA.			
F.H.W.A. REG.	ILLINOIS	PROJECT	ARA-HSP-531(08)	

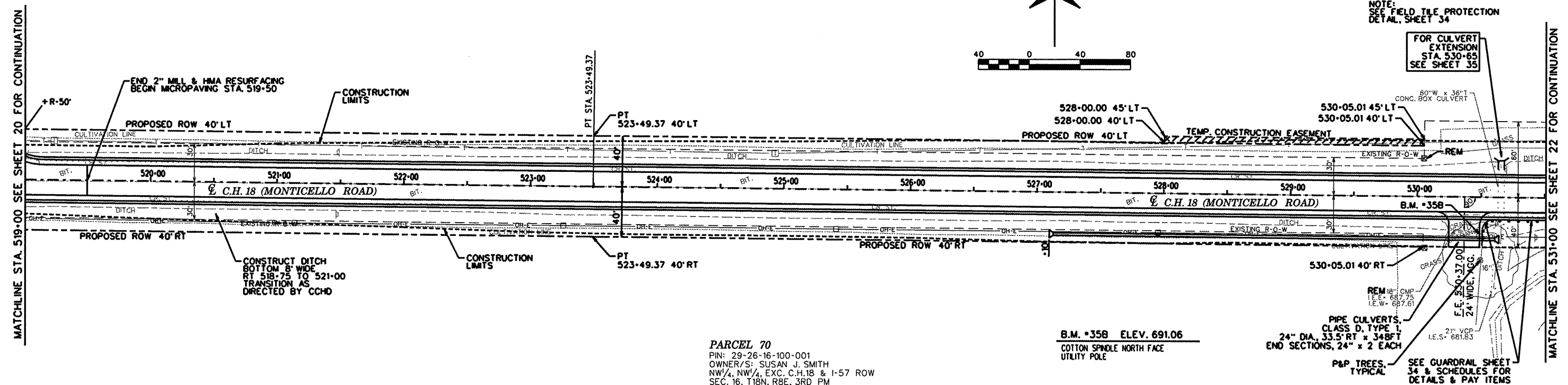
**PARCEL 69**  
 PIN: 29-26-09-300-001  
 OWNER/S: JOHN T. SMITH, JR., TRUST  
 KAREN D. RUSSELL, TTEE &  
 DAVID R. SMITH, TTEE  
 W/4 SW/4, SEC. 9, T18N, R8E, 3RD PM

**PARCEL 70**  
 PIN: 29-26-16-100-001  
 OWNER/S: SUSAN J. SMITH  
 NW/4, NW/4, EXC. C.H.18 & I-57 ROW  
 SEC. 16, T18N, R8E, 3RD PM



NOTE:  
 SEE FIELD TILE PROTECTION  
 DETAIL, SHEET 34

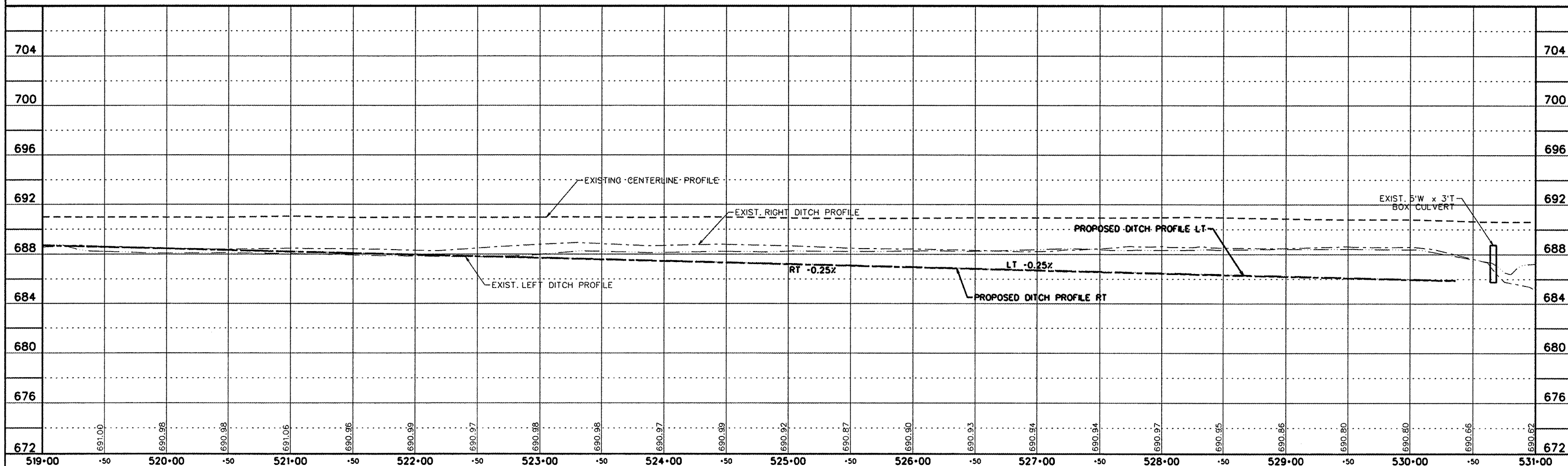
FOR CULVERT  
 EXTENSION  
 STA. 530+65  
 SEE SHEET 35



**B.M. #358 ELEV. 691.06**  
 COTTON SPINDLE NORTH FACE  
 UTILITY POLE

PIPE CULVERTS,  
 CLASS D, TYPE I,  
 24" DIA., 33.5' RT x 34.8' FT  
 END SECTIONS, 24" x 2 EACH

SEE GUARDRAIL SHEET  
 34 & SCHEDULES FOR  
 DETAILS & PAY ITEMS



PP36.dgn 8/20/2009 4:15:59 PM