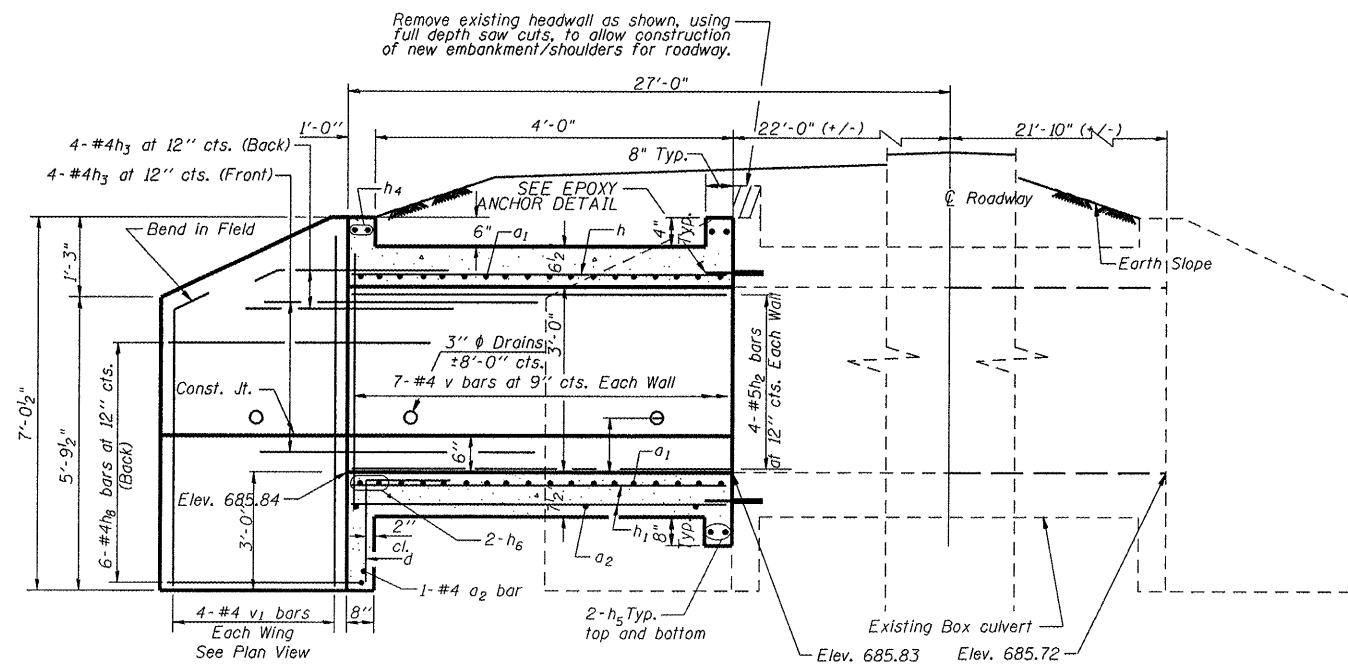
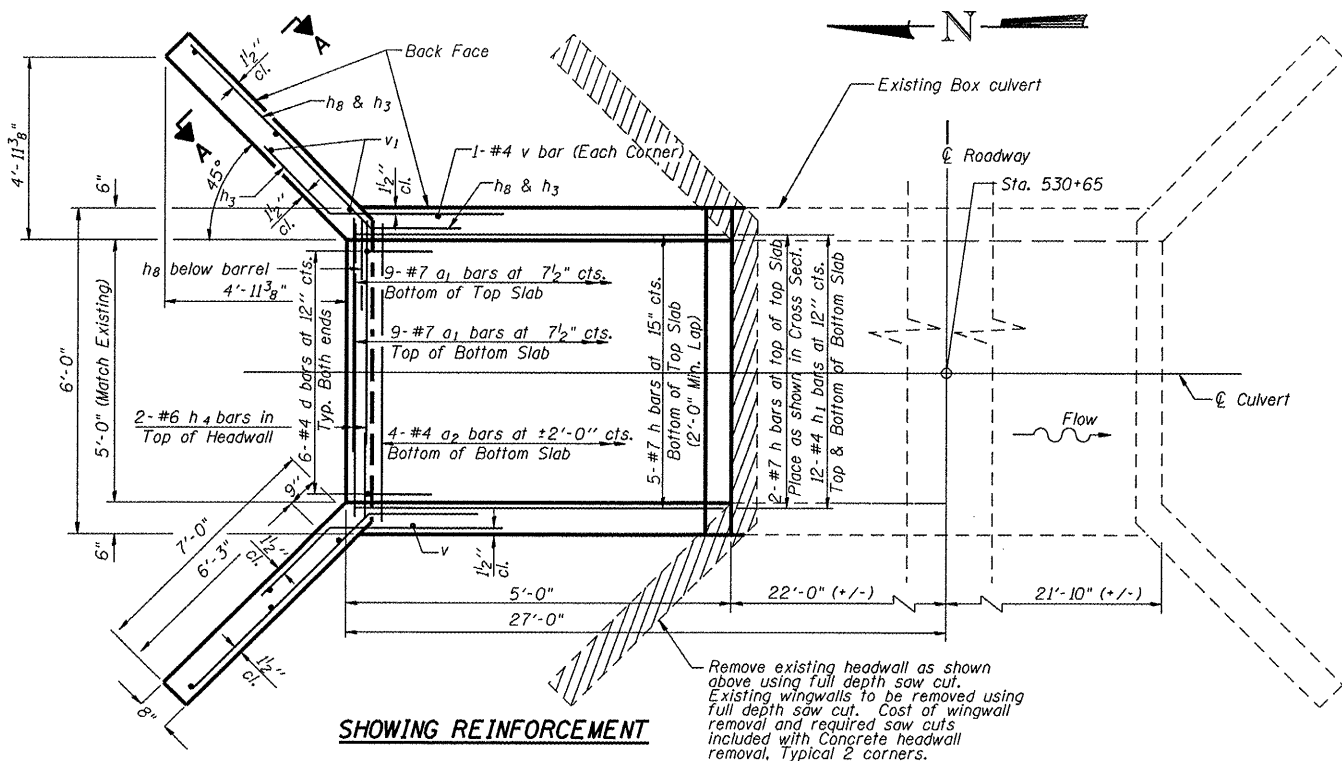


ROUTE NO.	SECTION	COUNTY	TOTAL SHEETS	SHEET NO.
MONTICELLO RD. CH 18 (FAS 531)	07-00419-00-RS	CHAMPAIGN	162	35
STA.	TO STA.			
F.H.W.A. REG.	ILLINOIS	PROJECT	ARA-HSIP-531(108)	

NOTE: FIELD VERIFY
All dimensions prior to ordering materials

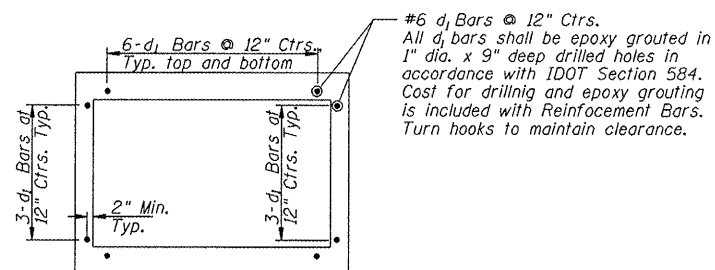


HALF LONG. SECTION



SHOWING REINFORCEMENT

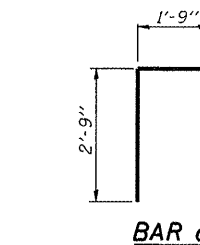
PLAN



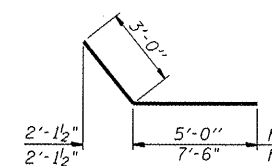
EPOXY ANCHOR DETAIL

NOTES

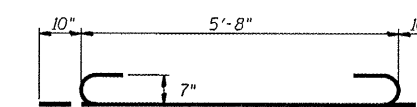
A distance of half the length of the wingwall but not less than six feet of the barrel shall be poured monolithically with the wingwalls.
Reinforcement Bars shall conform to the requirements of AASHTO M-31, M-42 or M-53, Grade 60.
Bars indicated thus 12 x 4-#5 etc. indicates 12 lines of bars with 4 lengths per line.
All construction joints shall be bonded.



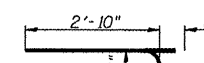
BAR d



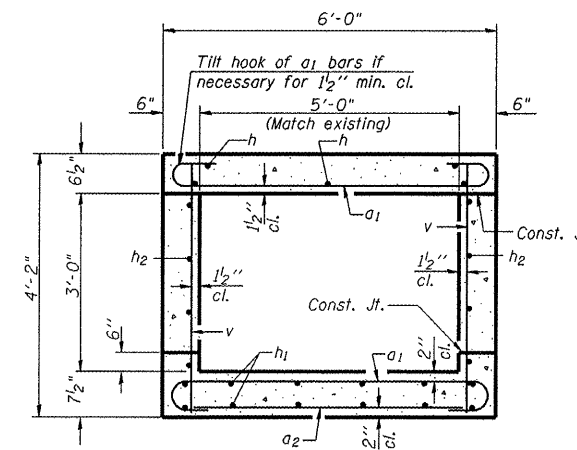
BARS h3 & h8



BAR a1



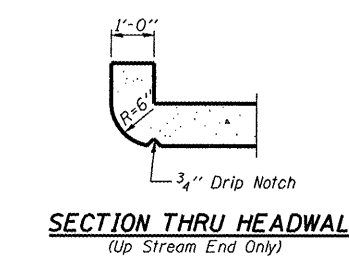
BAR d1



SECTION THRU BARREL

BILL OF MATERIAL

Bar	No.	Size	Length	Shape
a1	18	#7	7'-4"	
a2	4	#4	5'-8"	
d	6	#4	4'-6"	
d1	18	#6	3'-6"	
h	7	#7	4'-8"	
h1	12	#4	4'-8"	
h2	8	#5	4'-8"	
h3	16	#4	8'-0"	
h4	2	#6	5'-8"	
h5	4	#6	5'-8"	
h6	2	#6	5'-8"	
h8	12	#4	10'-6"	
v	16	#4	3'-10"	
v1	8	#4	6'-8"	
Concrete Box Culverts		Cu. Yd.	4.8	
Reinforcement Bars		Pound	860	
Concrete Headwall Removal		Each	1	

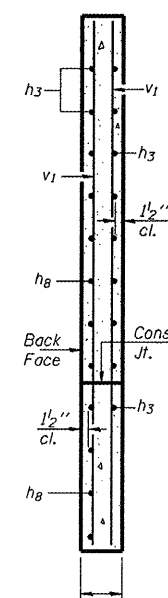


SECTION THRU HEADWALL
(Up Stream End Only)

DESIGN STRESSES

fy = 60,000 psi
f'c = 3,500 psi

LOADING HS 20-44 & ALT.



SECTION A-A