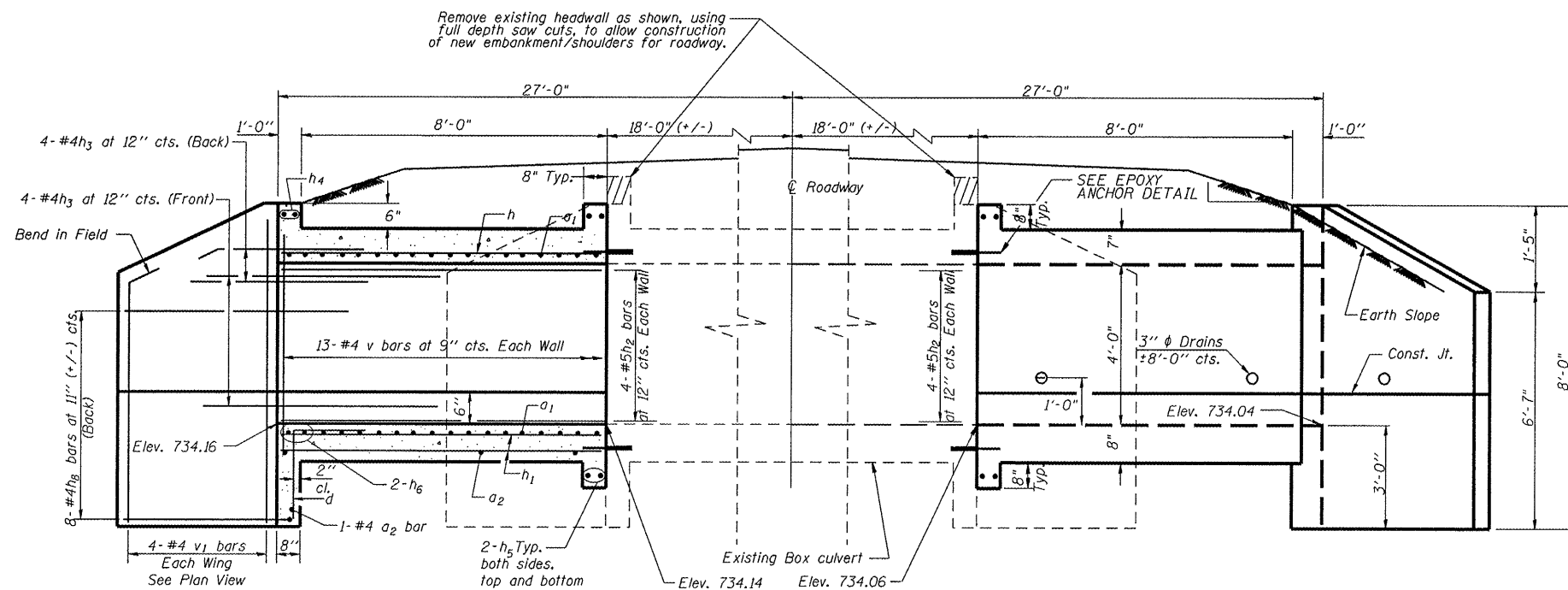


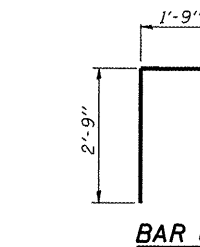
ROUTE NO.	SECTION	COUNTY	TOTAL SHEETS	SHEET NO.
MONTICELLO RD, CH 18 (FAS 53)	07-00419-00-RS	CHAMPAIGN	162	36
STA.	TO STA.			
F.H.W.A. REG.	ILLINOIS PROJECT	ARA-HSP-531(108)		

NOTE: FIELD VERIFY
All dimensions prior to ordering materials

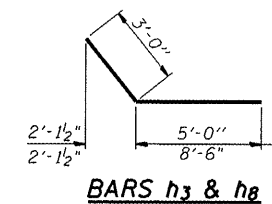


HALF LONG. SECTION

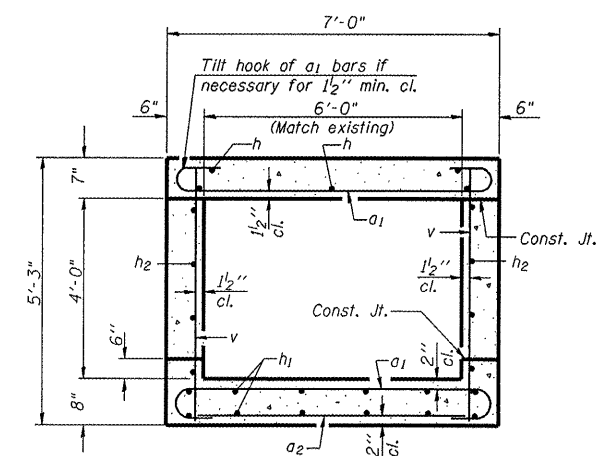
HALF ELEVATION



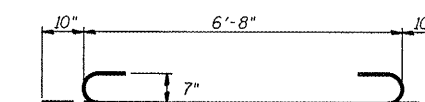
BAR d



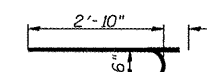
BARS h3 & h8



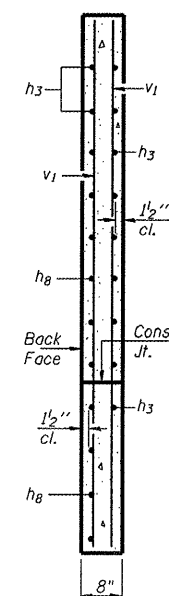
SECTION THRU BARREL



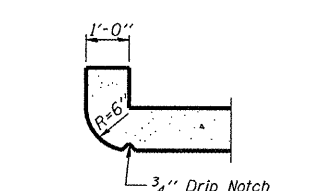
BAR a1



BAR d1



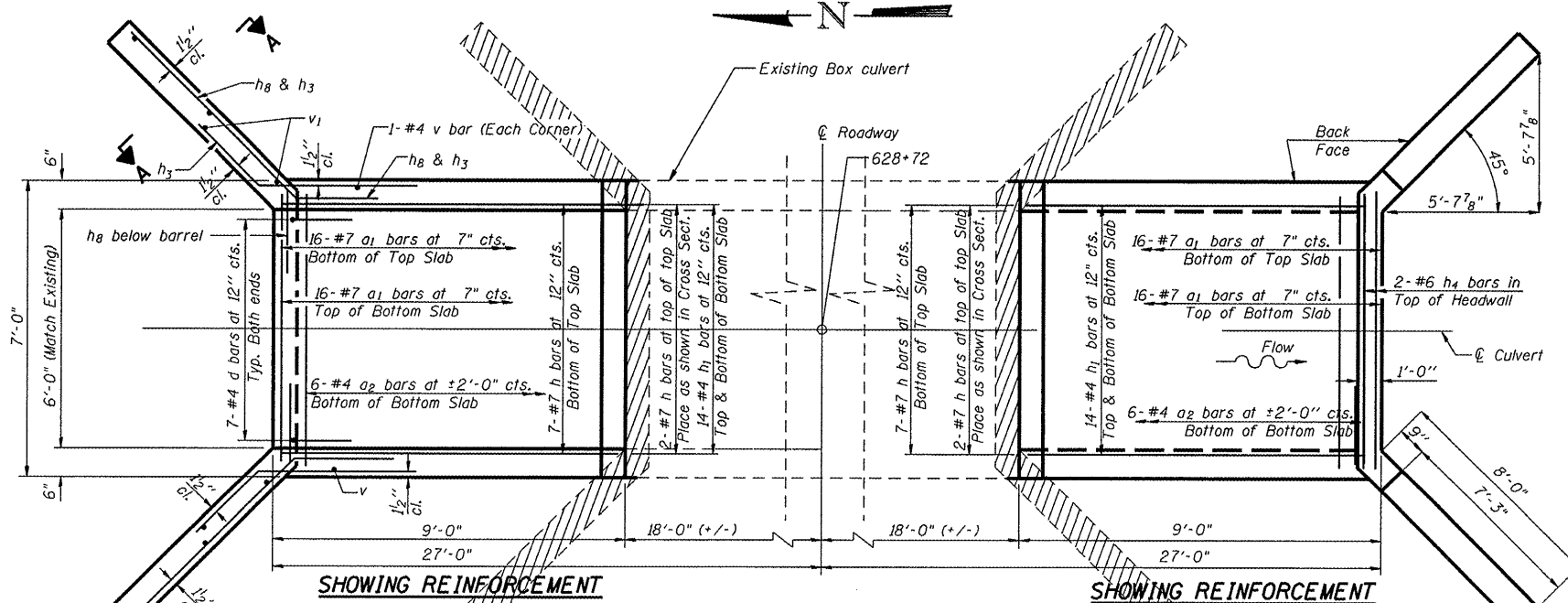
SECTION A-A



SECTION THRU HEADWALL
(Up Stream End Only)

DESIGN STRESSES
fy = 60,000 psi
f'c = 3,500 psi

LOADING HS 20-44 & ALT.

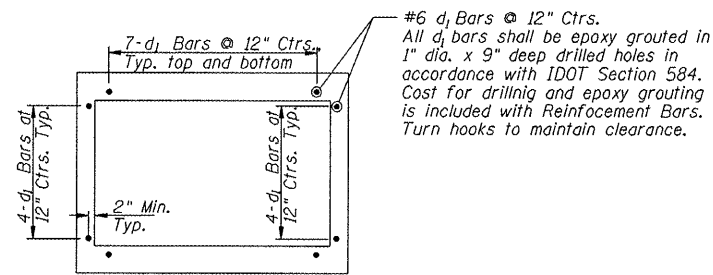


SHOWING REINFORCEMENT

SHOWING REINFORCEMENT

PLAN

EPOXY ANCHOR DETAIL



#6 d1 Bars @ 12" Ctrs.
All d1 bars shall be epoxy grouted in 1" dia. x 9" deep drilled holes in accordance with IDOT Section 584. Cost for drilling and epoxy grouting is included with Reinforcement Bars. Turn hooks to maintain clearance.

Remove existing headwall as shown above using full depth saw cut. Existing wingwalls to be removed using full depth saw cut. Cost of wingwall removal and required saw cuts included with Concrete headwall removal. Typical all 4 corners.

NOTES

A distance of half the length of the wingwall but not less than six feet of the barrel shall be poured monolithically with the wingwalls.
Reinforcement Bars shall conform to the requirements of AASHTO M-31, M-42 or M-53, Grade 60.
Bars indicated thus 12 x 4-#5 etc. indicates 12 lines of bars with 4 lengths per line.
All construction joints shall be bonded.

BOX CULVERT EXTENSION
STA. 628+72