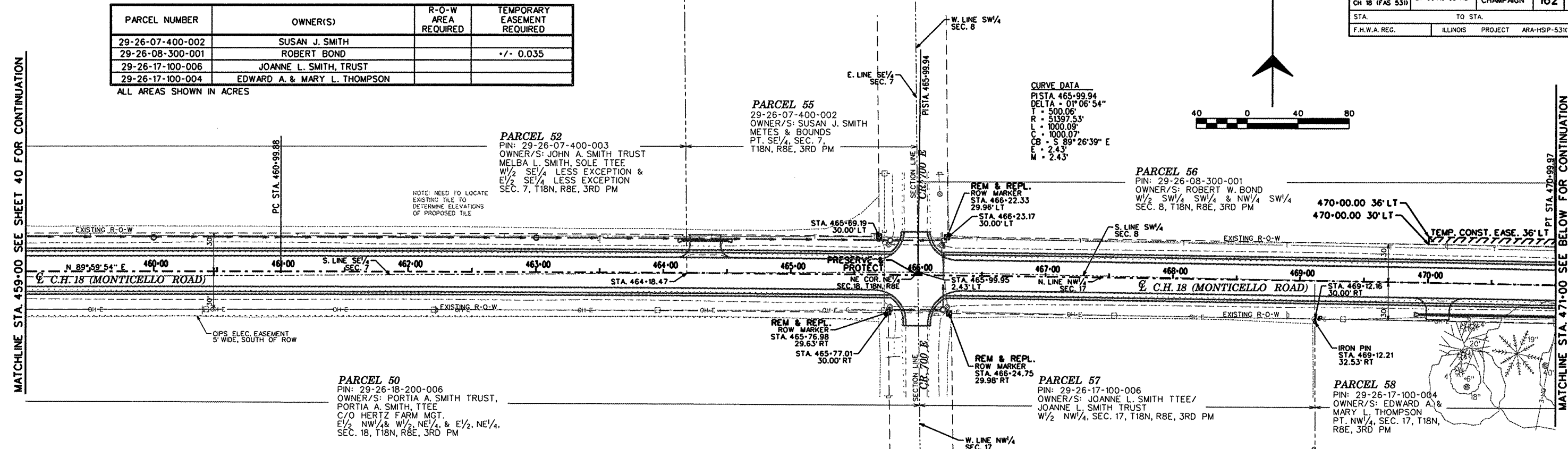


| ROUTE NO. | SECTION | COUNTY | TOTAL SHEETS | SHEET NO. |
|-------------------------------|----------------|------------------------------------|--------------|-----------|
| MONTICELLO RD. CH 18 (FAS 53) | 07-00419-00-RS | CHAMPAIGN | 162 | 41 |
| STA. | | TO STA. | | |
| F.H.W.A. REG. | | ILLINOIS PROJECT ARA-HSIP-531(008) | | |

| PARCEL NUMBER | OWNER(S) | R-O-W AREA REQUIRED | TEMPORARY EASEMENT REQUIRED |
|------------------|------------------------------|---------------------|-----------------------------|
| 29-26-07-400-002 | SUSAN J. SMITH | | |
| 29-26-08-300-001 | ROBERT BOND | | +/- 0.035 |
| 29-26-17-100-006 | JOANNE L. SMITH, TRUST | | |
| 29-26-17-100-004 | EDWARD A. & MARY L. THOMPSON | | |

ALL AREAS SHOWN IN ACRES

MATCHLINE STA. 459-00 SEE SHEET 40 FOR CONTINUATION

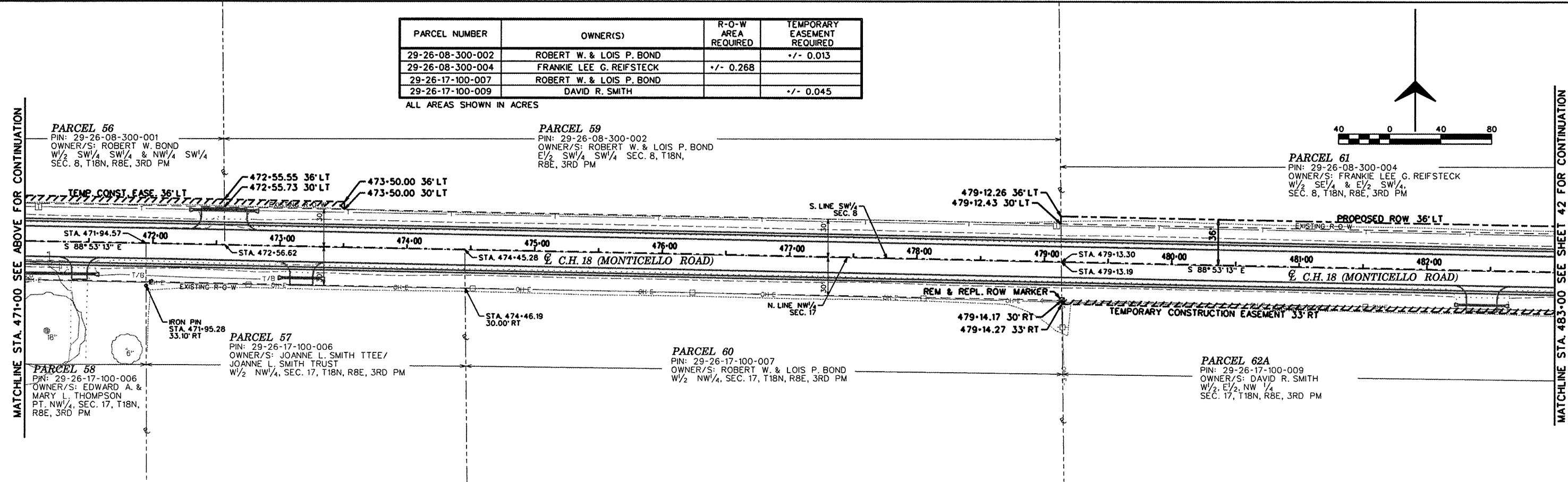


MATCHLINE STA. 471-00 SEE BELOW FOR CONTINUATION

| PARCEL NUMBER | OWNER(S) | R-O-W AREA REQUIRED | TEMPORARY EASEMENT REQUIRED |
|------------------|--------------------------|---------------------|-----------------------------|
| 29-26-08-300-002 | ROBERT W. & LOIS P. BOND | | +/- 0.013 |
| 29-26-08-300-004 | FRANKIE LEE G. REIFSTECK | +/- 0.268 | |
| 29-26-17-100-007 | ROBERT W. & LOIS P. BOND | | |
| 29-26-17-100-009 | DAVID R. SMITH | | +/- 0.045 |

ALL AREAS SHOWN IN ACRES

MATCHLINE STA. 471-00 SEE ABOVE FOR CONTINUATION



MATCHLINE STA. 483-00 SEE SHEET 42 FOR CONTINUATION