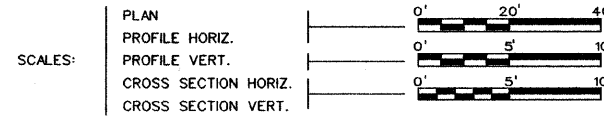


STATE OF ILLINOIS DEPARTMENT OF TRANSPORTATION PLANS FOR PROPOSED BRIDGE REPLACEMENT

INDEX OF SHEETS

| SHEET NO. | DESCRIPTION |
|-----------|----------------------------------|
| 1 | COVER SHEET |
| 2 | GENERAL NOTES & TYPICAL SECTIONS |
| 3 | SUMMARY OF QUANTITIES |
| 4 | SCHEDULE OF QUANTITIES |
| 5-6 | TIE POINTS |
| 7-8 | PLAN AND PROFILE |
| 9-10 | EROSION CONTROL PLAN |
| 11-17 | BRIDGE PLANS |
| 18-34 | CROSS SECTIONS |
| 35 | DETAILS |
| 36 | PILING DETAILS |

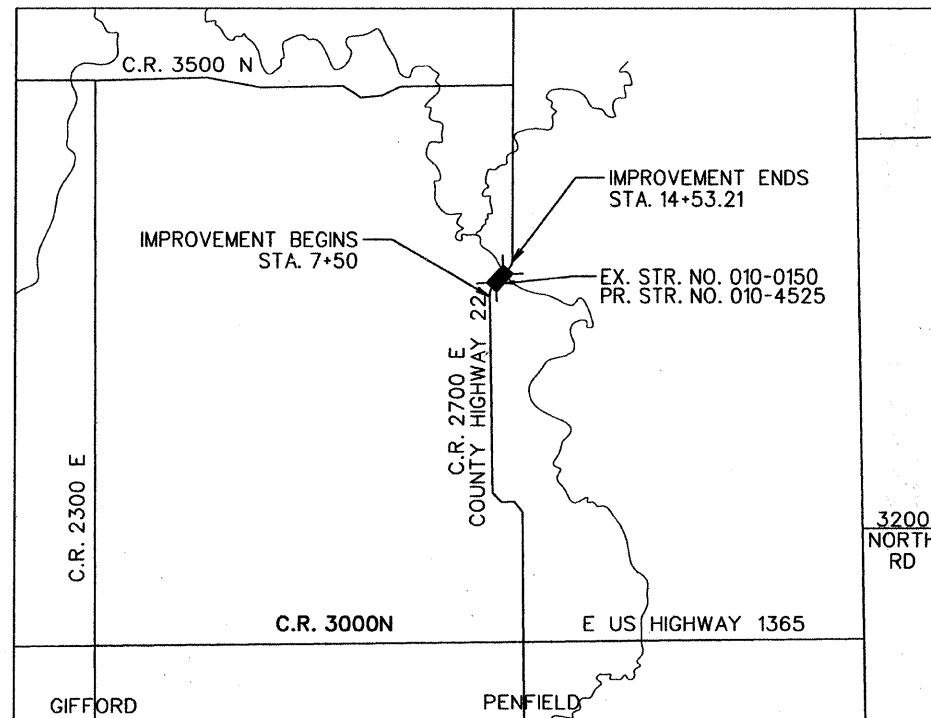


CHAMPAIGN COUNTY SECTION 05-00907-00-BR PROJECT NO. BRS-0515(105) JOB NO. C-95-329-08 STRUCTURE NO. 010-4525 C.H. 22 (F.A.S. 515) MAJOR BRIDGE PROGRAM & COUNTY BRIDGE FUNDS

ILLINOIS DEPT. OF TRANSPORTATION
HIGHWAY STANDARDS

| STANDARD NO. | DESCRIPTION |
|----------------------|--|
| 280001-04 | TEMPORARY EROSION CONTROL SYSTEMS |
| 515001-03 | NAME PLATE FOR BRIDGES |
| 630001-08 | STEEL PLATE BEAM GUARDRAIL |
| 780001-02 | TYPICAL PAVEMENT MARKINGS |
| 701901-01 | TRAFFIC CONTROL DEVICES |
| BLR 21-8 | TRAFFIC APPLICATION OF TRAFFIC CONTROL DEVICES ON RURAL LOCAL HIGHWAYS |
| BLR 23-3 | TRAFFIC BARRIER TERMINAL TYPE 1 |
| BLR 27-1 | TRAFFIC BARRIER TERMINAL TYPE 5A |
| BLR26-1 | STEEL PLATE BEAM GUARDRAIL 27 1/2" |

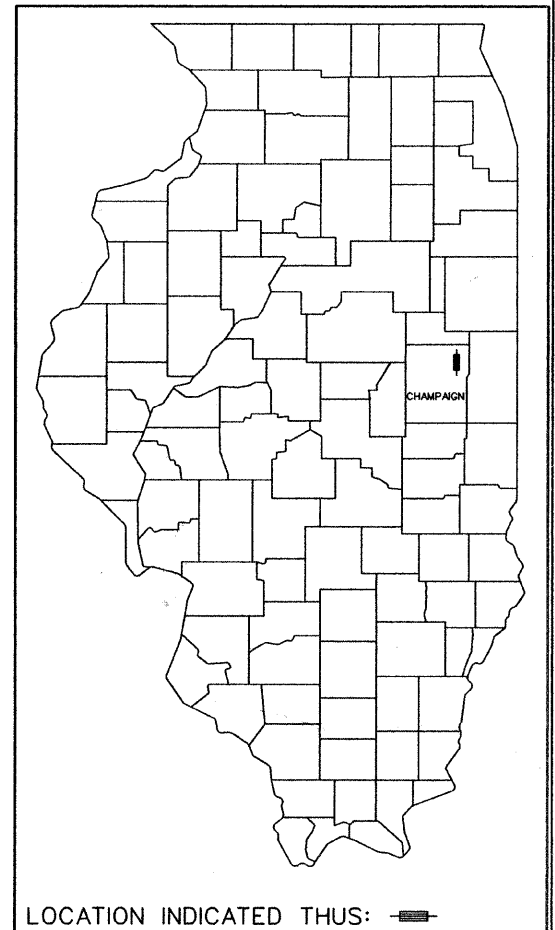
△ Revised 10-15-09



LOCATION MAP
NOT TO SCALE

NET LENGTH OF SECTION - 703.21 FEET - 0.133 MILES
FUNCTIONAL CLASS- RURAL COLLECTOR, ADT- 400

FOR JOINT UTILITY INFORMATION
CALL J.U.L.I.E. 1-800-892-0123



APPROVED 7-2 2009

 CHAMPAIGN COUNTY ENGINEER

PASSED 7/22 2009

 DISTRICT FIVE ENGINEER OF
 LOCAL ROADS & STREETS

Released For
 Bid Based on 7/22 2009
 Limited Review
 DEPUTY DIRECTOR OF HIGHWAYS,
 REGION THREE ENGINEER

STATE OF ILLINOIS
DEPARTMENT OF TRANSPORTATION



KEITH E. BRANDAU
ILLINOIS REGISTERED PROFESSIONAL ENGINEER NO. 062-44096
LICENSE EXPIRES 11-30-09

Sodemann and Associates, Inc.
340 NORTH NEIL STREET
POST OFFICE BOX 557
CHAMPAIGN, ILLINOIS 61824-0557
TEL 217 352-7688 FAX 217 352-7922
ENGINEERING / ANALYSIS / MANAGEMENT

