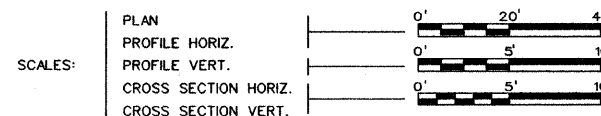


# STATE OF ILLINOIS DEPARTMENT OF TRANSPORTATION PLANS FOR PROPOSED BRIDGE REPLACEMENT

INDEX OF SHEETS

SHEET NO.	DESCRIPTION
1	COVER SHEET
2	GENERAL NOTES & TYPICAL SECTIONS
3	SUMMARY OF QUANTITIES
4	SCHEDULE OF QUANTITIES
5-6	TIE POINTS
7-8	PLAN AND PROFILE
9-10	EROSION CONTROL PLAN
11-17	BRIDGE PLANS
18-34	CROSS SECTIONS
35	DETAILS
36	PILING DETAILS

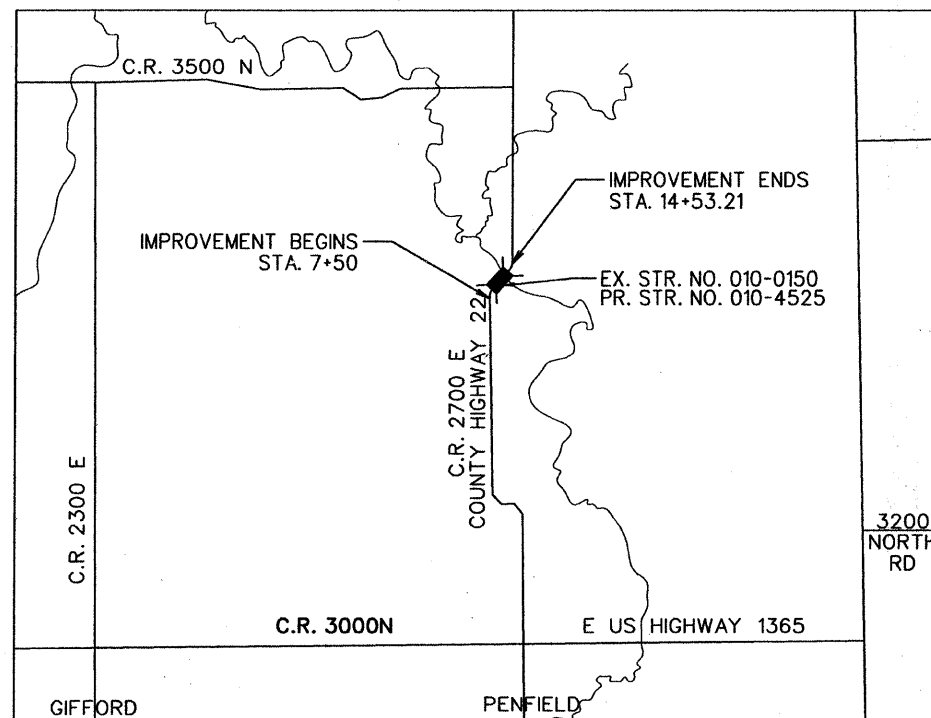


## CHAMPAIGN COUNTY SECTION 05-00907-00-BR PROJECT NO. BRS-0515(105) JOB NO. C-95-329-08 STRUCTURE NO. 010-4525 C.H. 22 (F.A.S. 515) MAJOR BRIDGE PROGRAM & COUNTY BRIDGE FUNDS

ILLINOIS DEPT. OF TRANSPORTATION  
HIGHWAY STANDARDS

STANDARD NO.	DESCRIPTION
280001-04	TEMPORARY EROSION CONTROL SYSTEMS
515001-03	NAME PLATE FOR BRIDGES
<del>630001-08</del>	<del>STEEL PLATE BEAM GUARDRAIL</del>
780001-02	TYPICAL PAVEMENT MARKINGS
701901-01	TRAFFIC CONTROL DEVICES
BLR 21-8	TRAFFIC APPLICATION OF TRAFFIC CONTROL DEVICES ON RURAL LOCAL HIGHWAYS
BLR 23-3	TRAFFIC BARRIER TERMINAL TYPE 1
BLR 27-1	TRAFFIC BARRIER TERMINAL TYPE 5A
<del>BLR26-1</del>	<del>STEEL PLATE BEAM GUARDRAIL 27 1/2"</del>

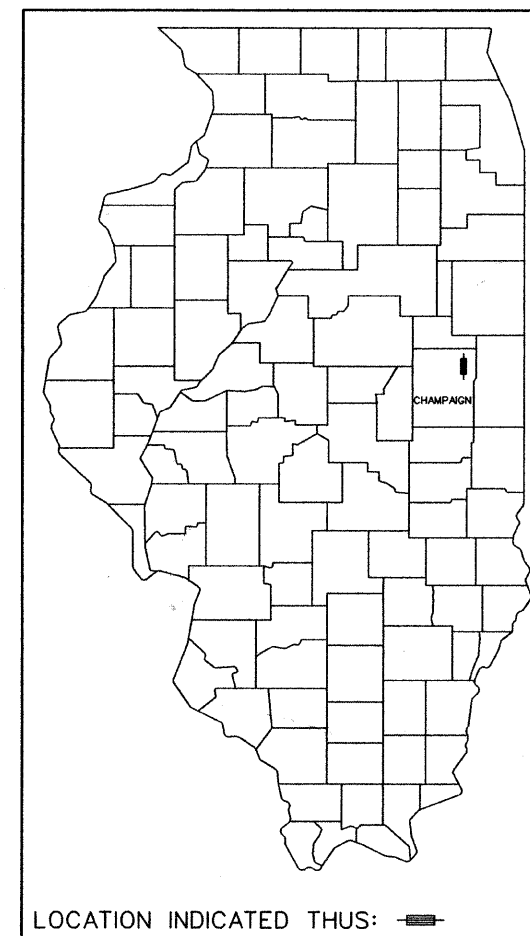
△ Revised 10-15-09



LOCATION MAP  
NOT TO SCALE

NET LENGTH OF SECTION - 703.21 FEET - 0.133 MILES  
FUNCTIONAL CLASS- RURAL COLLECTOR, ADT- 400

FOR JOINT UTILITY INFORMATION  
CALL J.U.L.I.E. 1-800-892-0123



APPROVED 7-2 2009  
 CHAMPAIGN COUNTY ENGINEER

PASSED 7/22 2009  
 DISTRICT FIVE ENGINEER OF  
 LOCAL ROADS & STREETS

Released For  
 Bid Based on 7/22 2009  
 Limited Review Joseph E. Brandau  
 DEPUTY DIRECTOR OF HIGHWAYS,  
 REGION THREE ENGINEER

STATE OF ILLINOIS  
 DEPARTMENT OF TRANSPORTATION

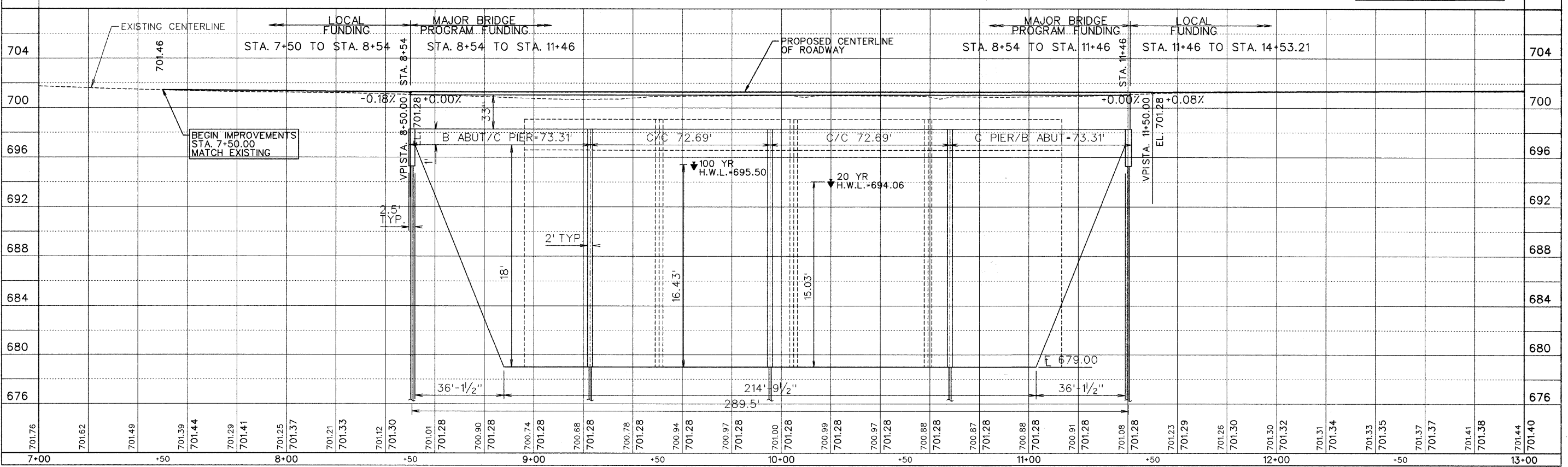
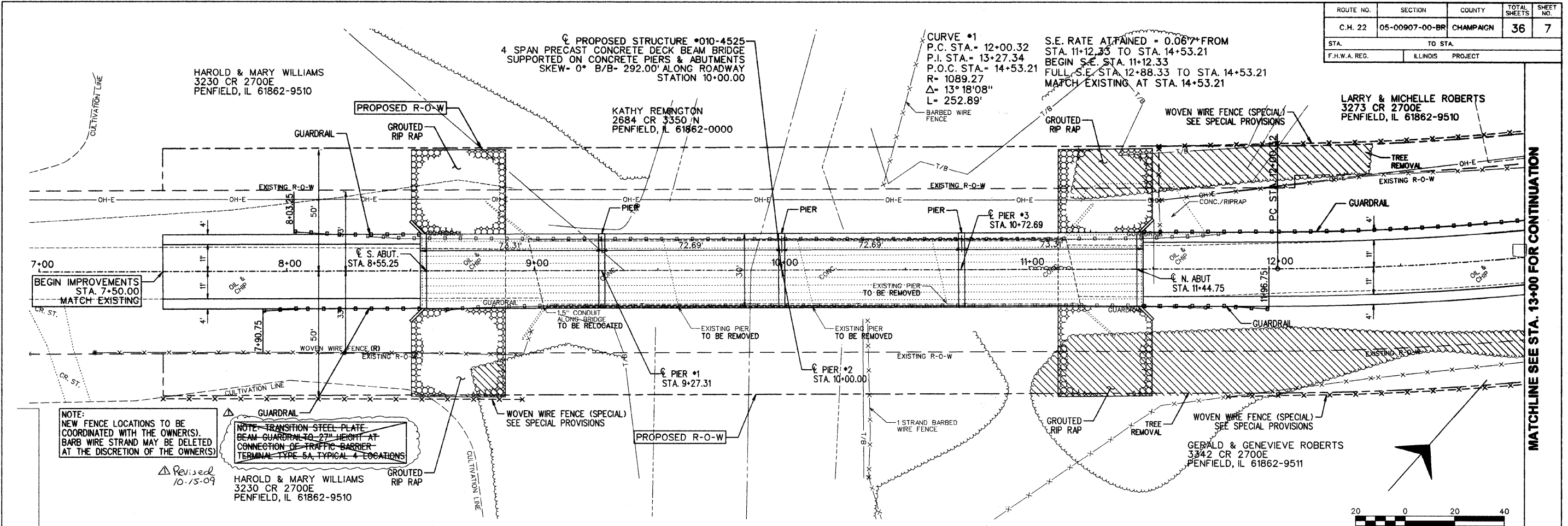


*Keith E. Brandau*  
 KEITH E. BRANDAU  
 ILLINOIS REGISTERED PROFESSIONAL ENGINEER NO. 062-44096  
 LICENSE EXPIRES 11-30-09

Sodemann and Associates, Inc.  
 340 NORTH NEIL STREET  
 POST OFFICE BOX 557  
 CHAMPAIGN, ILLINOIS 61824-0557  
 TEL 217 352-7688 FAX 217 352-7922  
 ENGINEERING / ANALYSIS / MANAGEMENT



ROUTE NO.	SECTION	COUNTY	TOTAL SHEETS	SHEET NO.
C.H. 22	05-00907-00-BR	CHAMPAIGN	36	7
STA.	TO STA.			
F.H.W.A. REG.	ILLINOIS	PROJECT		



MATCHLINE SEE STA. 13+00 FOR CONTINUATION