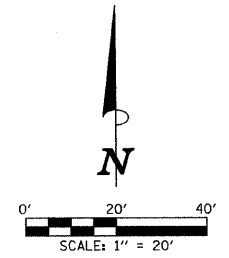
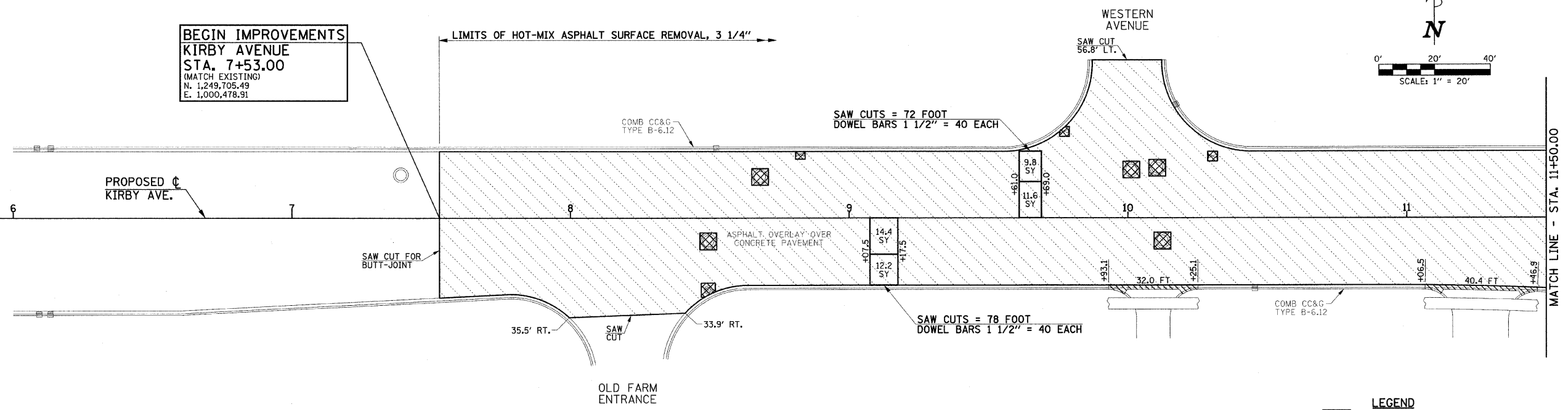


SEC. 14, T.19N., R.8E., 3rd P.M.
CHAMPAIGN COUNTY, ILLINOIS



BEGIN IMPROVEMENTS
KIRBY AVENUE
STA. 7+53.00
(MATCH EXISTING)
N. 1,249,705.49
E. 1,000,478.91



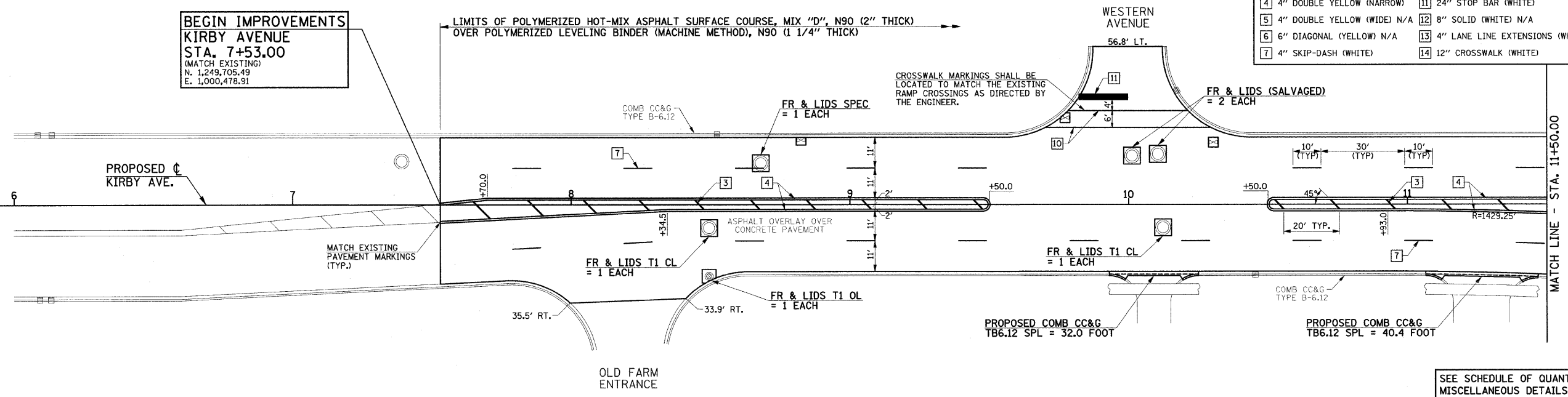
- LEGEND**
- HOT-MIX ASPHALT SURFACE REMOVAL, 3 1/4"
 - COMBINATION CURB AND GUTTER REMOVAL
 - CLASS B PATCHES, TYPE II, 12 INCH
 - PAVEMENT PATCHING SPECIAL (SEE DETAIL)

SEC. 23, T.19N., R.8E., 3rd P.M.
CHAMPAIGN COUNTY, ILLINOIS

SEC. 14, T.19N., R.8E., 3rd P.M.
CHAMPAIGN COUNTY, ILLINOIS

BEGIN IMPROVEMENTS
KIRBY AVENUE
STA. 7+53.00
(MATCH EXISTING)
N. 1,249,705.49
E. 1,000,478.91

TYPICAL PAVEMENT MARKING LEGEND			
1	4" SKIP-DASH (YELLOW)	8	4" SOLID (WHITE)
2	4" SOLID (YELLOW)	9	12" DIAGONAL (WHITE) N/A
3	12" DIAGONAL (YELLOW)	10	6" CROSSWALK (WHITE)
4	4" DOUBLE YELLOW (NARROW)	11	24" STOP BAR (WHITE)
5	4" DOUBLE YELLOW (WIDE) N/A	12	8" SOLID (WHITE) N/A
6	6" DIAGONAL (YELLOW) N/A	13	4" LANE LINE EXTENSIONS (WHITE) N/A
7	4" SKIP-DASH (WHITE)	14	12" CROSSWALK (WHITE)



SEE SCHEDULE OF QUANTITIES AND MISCELLANEOUS DETAILS SHEET FOR ADDITIONAL INFORMATION.

SEC. 23, T.19N., R.8E., 3rd P.M.
CHAMPAIGN COUNTY, ILLINOIS

FILE NAME = p:\c0010470\plans\sheets\kirbyp1an.dgn
PLOT DATE = 7/16/2009 10:44:36 AM

DESIGNED - R.L.H.	REVISED -
DRAWN - J.L.B.	REVISED -
CHECKED - J.T.P.	REVISED -
DATE - 6-09	REVISED -

STATE OF ILLINOIS
DEPARTMENT OF TRANSPORTATION

PLAN - KIRBY AVENUE

SCALE: 1"=20' SHEET NO. 11 OF 27 SHEETS STA. 7+53.00 TO STA. 11+50.00

F.A.J. RTE.	SECTION	COUNTY	TOTAL SHEETS	SHEET NO.
7138	09-00281-00-RS	CHAMPAIGN	27	11
FED. ROAD DIST. NO. ILLINOIS FED. AID PROJECT ARA-S181 (046)			CONTRACT NO. 91408	