

INDEX OF SHEETS

SHEET NO.	DESCRIPTION
1	COVER SHEET
2	SUMMARY OF QTYS, GENERAL NOTES, & TYPICAL SECTIONS
3	SCHEDULE OF QTYS
4	PLAN & PROFILE
5	PAVEMENT MARKING PLAN
6	EROSION CONTROL PLAN
7-17	BRIDGE PLANS
18	CROSS SECTIONS

LIST OF STANDARD DRAWINGS

STANDARD NO.	DESCRIPTION
000001 - 05	STANDARD SYMBOLS, ABBREVIATIONS, AND PATTERNS
280001 - 04	TEMPORARY EROSION CONTROL SYSTEMS
515001 - 03	NAME PLATE FOR BRIDGES
630001 - 08	STEEL PLATE BEAM GUARDRAIL
631011 - 05	TRAFFIC BARRIER TERMINAL TYPE 2
701006 - 03	OFF ROAD OPERATIONS, 2L, 2W, 15' TO 24' FROM PAVEMENT EDGE
701301 - 03	LANE CLOSURE, 2L, 2W, SHORT TIME OPERATIONS
701901 - 01	TRAFFIC CONTROL DEVICES
780001 - 02	TYPICAL PAVEMENT MARKINGS
BLR 21 - 8	TYPICAL APPLICATION OF TRAFFIC CONTROL DEVICES FOR CONSTRUCTION OF RURAL LOCAL HIGHWAYS
BLR 23 - 3	TRAFFIC BARRIER TERMINAL TYPE 1
BLR 27 - 1	TRAFFIC BARRIER TERMINAL TYPE 5A

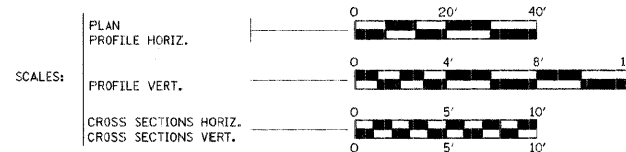
COMMITMENTS-NONE



John A. Frauenhoffer
 JOHN A. FRAUENHOFFER
 Illinois Licensed Professional Engineer Number 36768
 License Expires 11/30/09

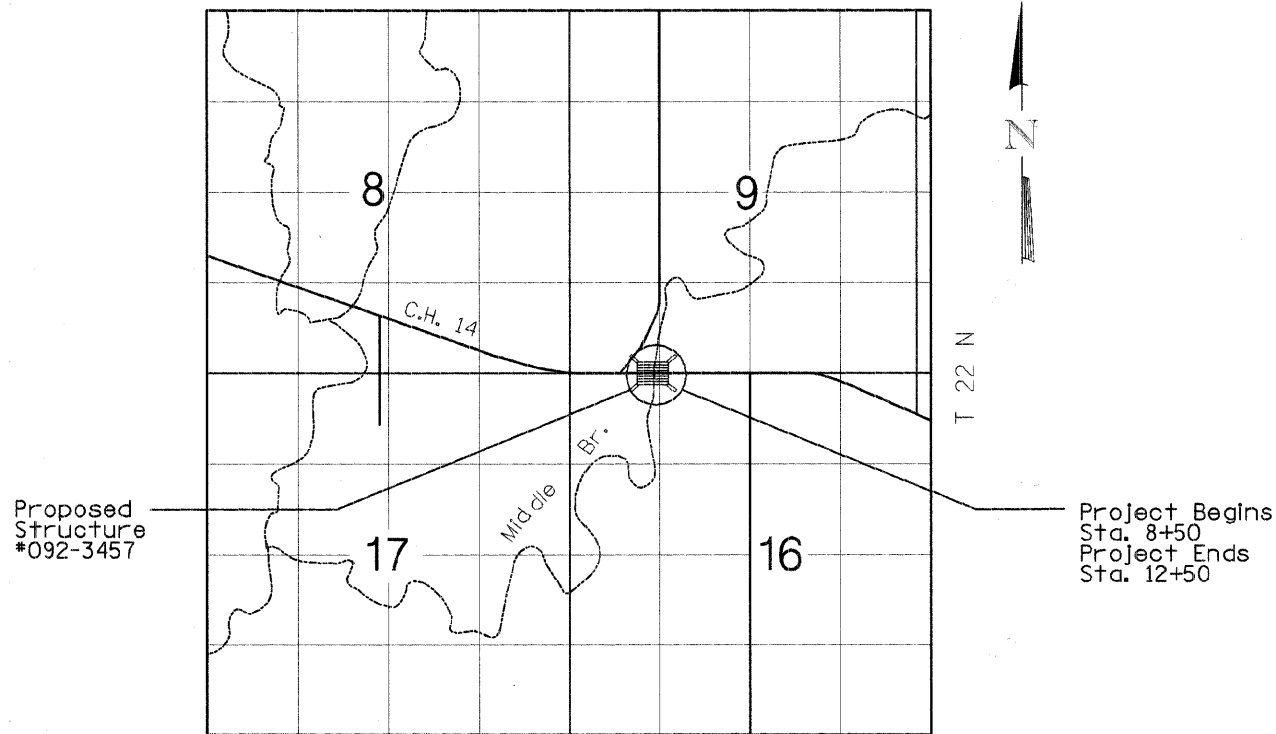
FOR JOINT UTILITY INFORMATION
 CALL TOLL FREE 1-800-892-0123
 CAT. #033488-00

STATE OF ILLINOIS
 DEPARTMENT OF TRANSPORTATION
**PLANS FOR PROPOSED
 BRIDGE REPLACEMENT**



VERMILION COUNTY
 SECTION 97-00141-00-BR
 RS-ARA 0496(106)
 FAS 496
 COUNTY HIGHWAY 14
 AMERICAN RECOVERY
 & REINVESTMENT ACT
 C-95-333-09

R 11 W, 2nd P.M.



Proposed Structure
 #092-3457

Project Begins
 Sta. 8+50
 Project Ends
 Sta. 12+50

LOCATION MAP

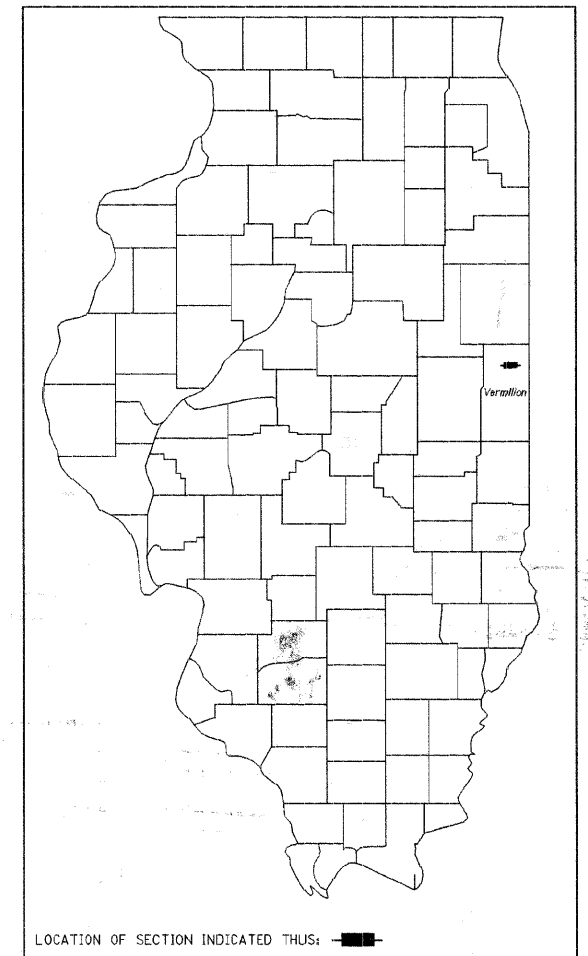
ADT = 500 (CURRENT), 500 (DESIGN)
 FUNCTIONAL CLASS = MAJOR COLLECTOR

NET LENGTH OF SECTION = 400 FEET = 0.076 MILES

Contract # 91413

ROUTE NO.	SECTION	COUNTY	TOTAL SHEETS	SHEET NO.
FAS 496	*	Vermilion	184-19	1
FED. ROAD DIST. NO. 7	ILLINOIS	FED. AID PROJECT		

*97-00141-00-BR



LOCATION OF SECTION INDICATED THIS: [Symbol]

APPROVED *August 7 2009*
Douglas R. Stuber
 DOUG STUBER, P.E. VERMILION COUNTY ENGINEER

PASSED *8/14 2009*
Jim Sol
 DISTRICT FIVE ENGINEER OF LOCAL ROADS & STREETS

Releasing For Bid Based on Limited Review *8/14 2009*
Joseph E. Conroy
 DEPUTY DIRECTOR OF HIGHWAYS, REGION THREE ENGINEER
 STATE OF ILLINOIS
 DEPARTMENT OF TRANSPORTATION

FRAUENHOFFER
 Frauenhoffer and Associates, P.C. Consulting Engineers
 3002 Crossing Court Champaign, IL 61822 217-351-6268