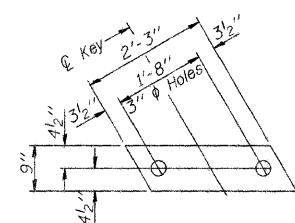
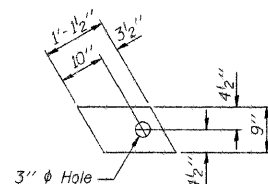


NSRF NO.	SECTION	COUNTY	TOTAL SHEETS	SHEET NO.
FAS 496	*	Vermilion	18	15
DES. REVISION		DATE	PROJECT	

\*97-00141-00-BR



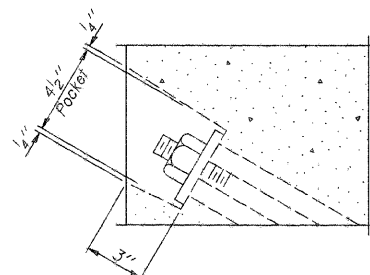
FABRIC BEARING PAD (Interior)



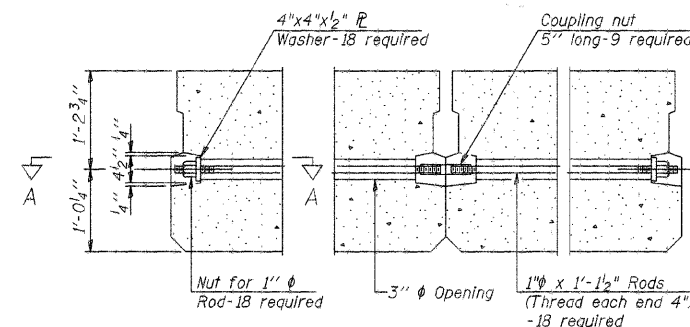
FABRIC BEARING PAD (Exterior)

FIXED

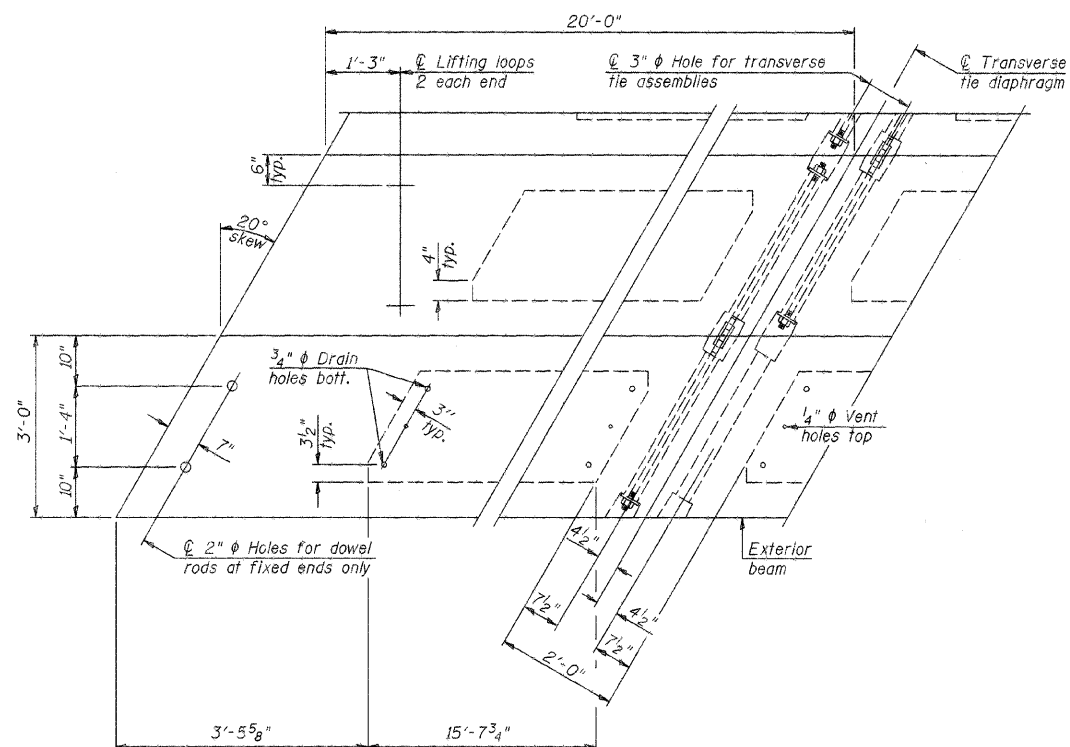
Note: Omit holes when using expansion bearings.



SECTION A-A



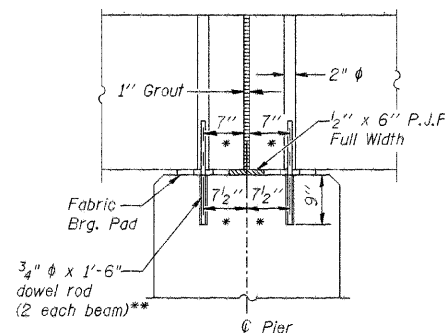
TYPICAL TRANSVERSE TIE ASSEMBLY



PLAN VIEW

Note: Connect beams in pairs with the transverse tie configuration shown.

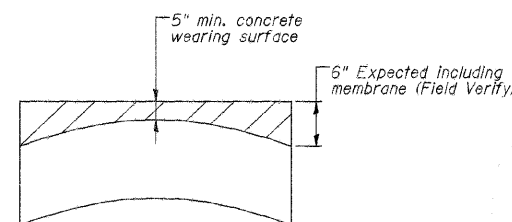
1" Joint shall be packed with a very dry mix of 2:1 sand and P.C. mortar. 1" Dimension may vary plus or minus to accommodate tolerance in beam lengths.



SECTION AT PIER

\* Perpendicular to centerline of pier

\*\* Dowel rods to be grouted after beams are in place and prior to grouting the shear keys

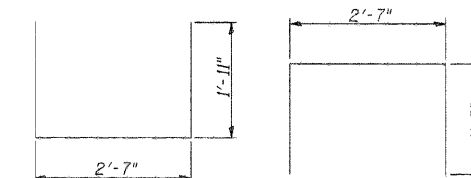


CAMBER DIAGRAM

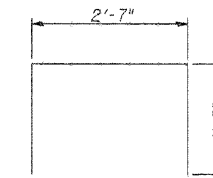
Along Center of Beam

NOTES

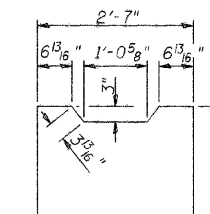
Prestressing steel shall be uncoated high strength, low relaxation 7-wire strand, Grade 270. The nominal diameter shall be 1/2" and the nominal cross-sectional area shall be 0.153 sq. in. The 1" rods in the transverse tie assembly shall be tightened to a snug fit and the threads set. Pockets on exterior faces of bridge shall be filled with grout after transverse tie assembly is in place. Reinforcement bars shall conform to ASTM A 706, Grade 60. (See Special Provisions). Two 5/8" fabric adjusting shims of the dimensions of the exterior bearing pad shall be provided for each bearing pad location. A minimum 2 1/2" lifting pin shall be used to engage the lifting loops during handling. Corrosion Inhibitor, per Article 1020.05(b)(12) and 1021.06 of the Standard Specifications, shall be used in the concrete for precast prestressed concrete deck beams. Compressive strength of prestressed concrete, f'c, shall be 6000 psi. Compressive strength of prestressed concrete at release, f'ci, shall be 5000 psi.



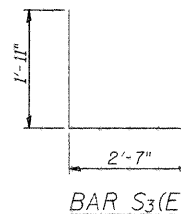
BAR S(E)



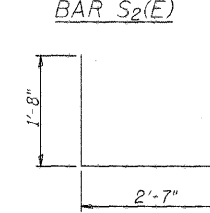
BAR S1(E)



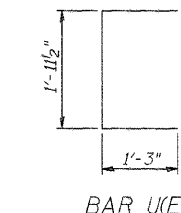
BAR S2(E)



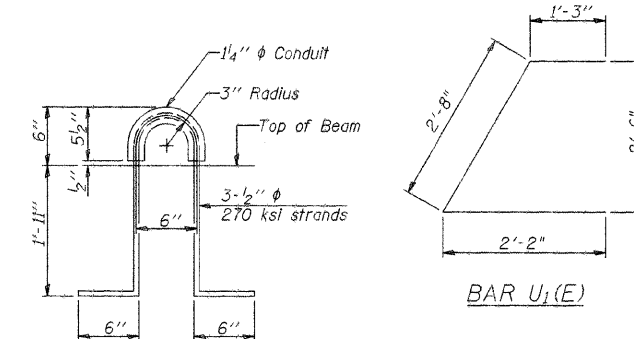
BAR S3(E)



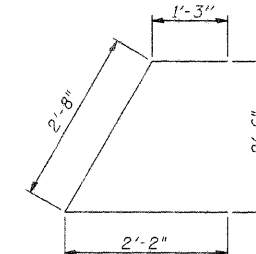
BAR S4(E)



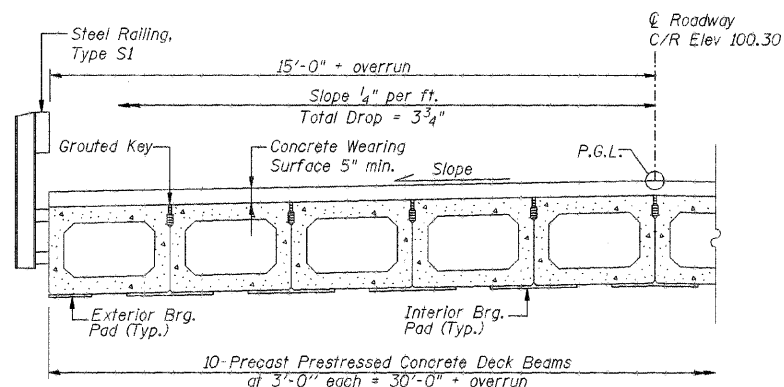
BAR U(E)



LIFTING LOOP DETAIL



BAR U1(E)



HALF CROSS SECTION

BILL OF MATERIAL

Precast Prestressed Conc. Deck Bms. (27" depth)	Sq. Ft.	1798
---	---------	------

27" x 36" PPC DECK BEAM  
STRUCTURE NO. 092-3457  
SPAN 2

DSGN	K.J. Hoffmann				
DR	K.J. Hoffmann				
CHK	J.R. Wolf				
APVD	J.A. Fraenhoffer	NO.	DATE	REVISION	BY

**FRAUENHOFFER**  
Frauenhoffer and Associates, P.C. Consulting Engineers  
3002 Crossing Court Champaign, IL 61822 217-351-6268

SUPERSTRUCTURE DETAILS (SHEET 4 OF 4)		SHEET 15
FAS 496 (C.H. 14) OVER MIDDLE BRANCH OF N. FORK SECTION 97-00141-00-BR VERMILION COUNTY		DWG NO. 9705tsup.dgn
		DATE APR 2009
		PROJ NO. 97051