

PLAN

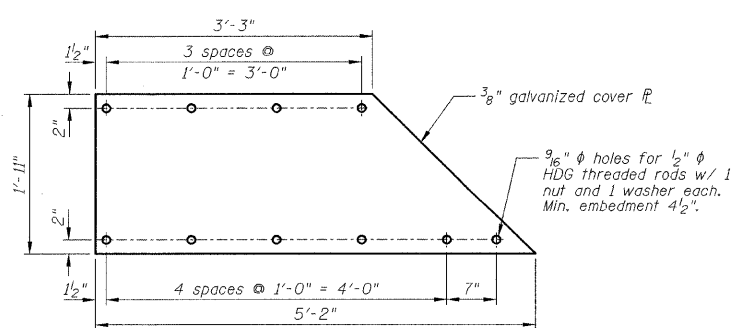


PLATE "A"

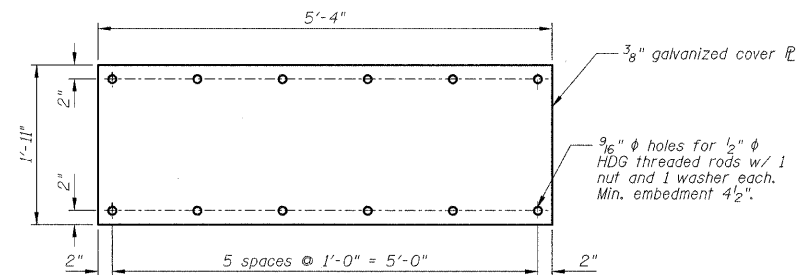


PLATE "B"

- NOTES:**
- 1.) Cover plates shall conform to the requirements of ASTM A36.
 - 2.) 1/2" ϕ threaded rods shall conform to the requirements of ASTM A 193, Grade B7.
 - 3.) All connection components included in the cost for Furnishing and Erecting Structural Steel.
 - 4.) Polyurethane elastomeric sealant shall conform to the requirements of ASTM C920. Cost included with Furnishing and Erecting Structural Steel.

DESIGNED - SDH	REVISED -
DRAWN - JWK	REVISED -
CHECKED - MSW	REVISED -
DATE - 07/22/2009	REVISED -

TOWN OF NORMAL	
-----------------------	--

BOTTOM SLAB COVER PLATE	
SCALE:	SHEET NO. 05 OF 23 SHEETS STA. TO STA.

VIRGINIA AVENUE OVER SUGAR CREEK	
SECTION 04-00226-00-BR	
MCLEAN COUNTY	

F.A.U.	SECTION	COUNTY	TOTAL SHEETS	SHEET NO.
6366	04-00226-00-BR	MCLEAN	52	25
S.N. 057-7834		CONTRACT NO. 91416		
FED. ROAD DIST. NO. [ILLINOIS] FED. AID PROJECT				