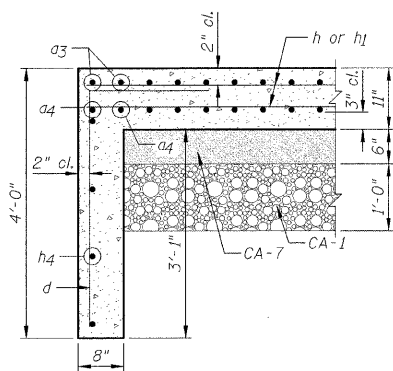
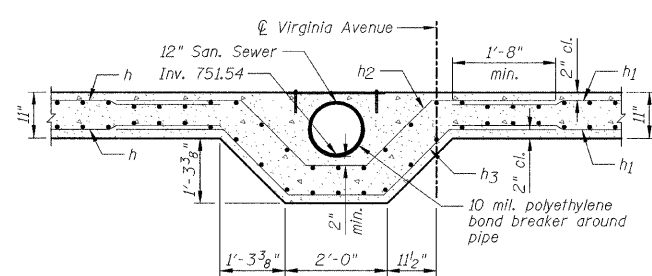


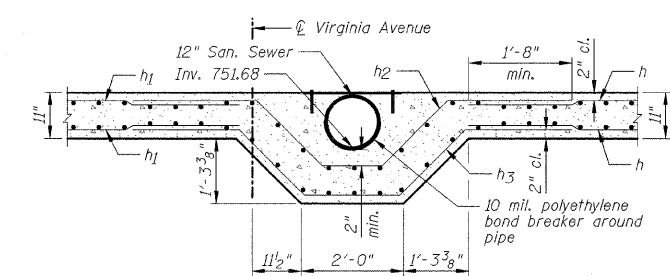
BOTTOM SLAB PLAN



SECTION A-A



WEST END PIPE DETAIL (SECTION G-G)



EAST END PIPE DETAIL (SECTION H-H)

NOTES:

- 1.) Order a3 and a4 bars Full length, cut according to Bar Cutting Diagram on Sheet C2. Use remainder of bars in opposite end.
- 2.) For bar lap lengths, see the General Notes on Sheet C2.
- 3.) See Sheet C2 for Bill of Materials.
- 4.) See Sheet C5 for Cover Plate Detail.
- 5.) See Sheet C7 for View B-B and Section C-C.
- 6.) See Sheet C8 for Section D-D and Section E-E.
- 7.) See Sheet C9 for Section F-F.
- 8.) Cut a thru a4 bars as required to miss 12" sanitary sewer.

DESIGNED - SDH	REVISED -
DRAWN - JWK	REVISED -
CHECKED - MSW	REVISED -
DATE - 07/22/2009	REVISED -

TOWN OF NORMAL	
-----------------------	--

BOTTOM SLAB REINFORCEMENT AND SECTION	
SCALE:	SHEET NO. C4 OF 23 SHEETS STA. TO STA.

VIRGINIA AVENUE OVER SUGAR CREEK SECTION 04-00226-00-BR MCLEAN COUNTY	
--	--

F.A.U.	SECTION	COUNTY	TOTAL SHEETS	SHEET NO.
6366	04-00226-00-BR	MCLEAN	52	26
S.N. 057-7834		CONTRACT NO. 91416		
FED. ROAD DIST. NO.		ILLINOIS FED. AID PROJECT		