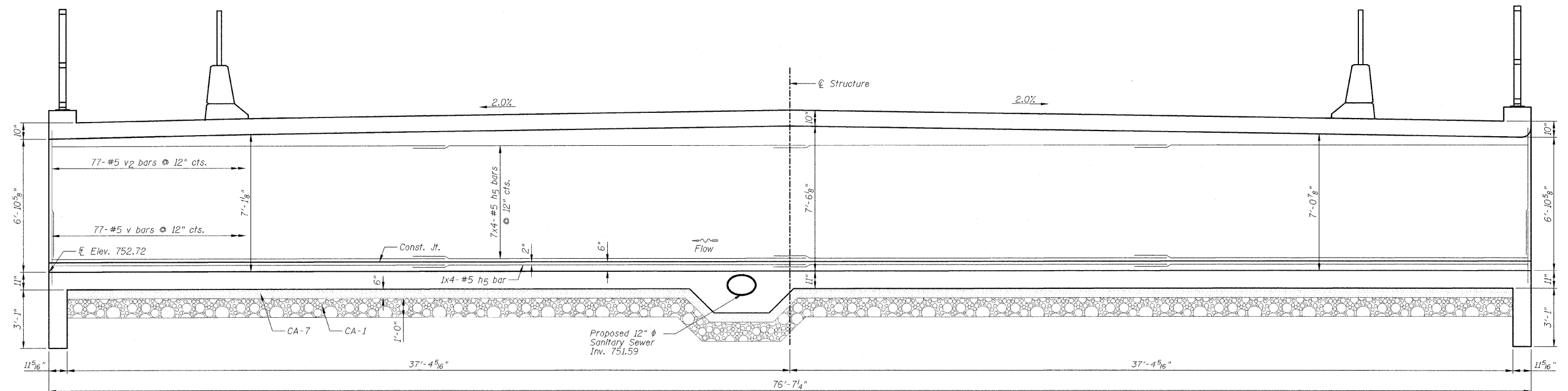


WEST EXTERIOR WALL (VIEW B-B)
(Looking Northeast)



WEST INTERIOR WALL (SECTION C-C)
(Looking Northeast)

NOTES:

- 1.) See Sheet C4 for location of sections.
- 2.) Steel reinforcement in slabs not shown for clarity.
- 3.) Cut h5, v and v1 bars as necessary to miss 12" diameter Storm Sewer.

DESIGNED - SDH	REVISED -
DRAWN - JWK	REVISED -
CHECKED - MSW	REVISED -
DATE - 07/22/2009	REVISED -

TOWN OF NORMAL

CULVERT WALL SECTIONS

**VIRGINIA AVENUE OVER SUGAR CREEK
SECTION 04-00226-00-BR
MCLEAN COUNTY**

F.A.J.	SECTION	COUNTY	TOTAL SHEETS	SHEET NO.
6366	04-00226-00-BR	MCLEAN	52	28
S.N. 057-7834		CONTRACT NO. 91416		
FED. ROAD DIST. NO.		ILLINOIS FED. AID PROJECT		

FARNSWORTH GROUP, INC.

CONSULTING ENGINEERS - 2709 MCGRAW DRIVE BLOOMINGTON, ILLINOIS 61704 (309) 663-8435 / (309) 663-1571 FAX

24-6082