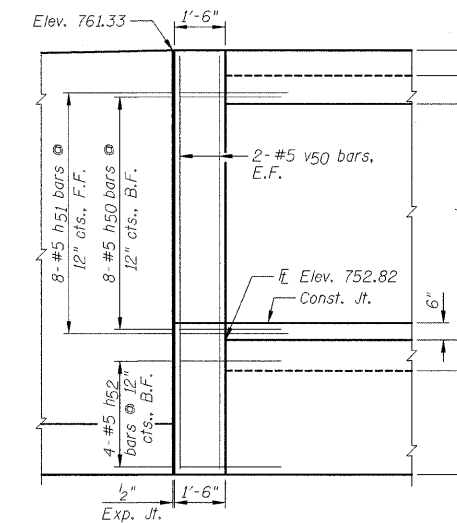
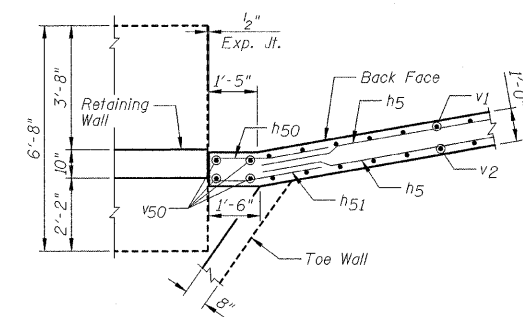


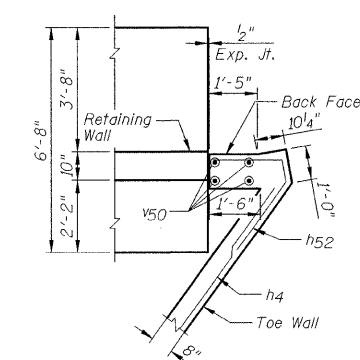
**SOUTHWEST RETAINING WALL ELEVATION**



**SOUTHWEST CORNER ELEVATION**



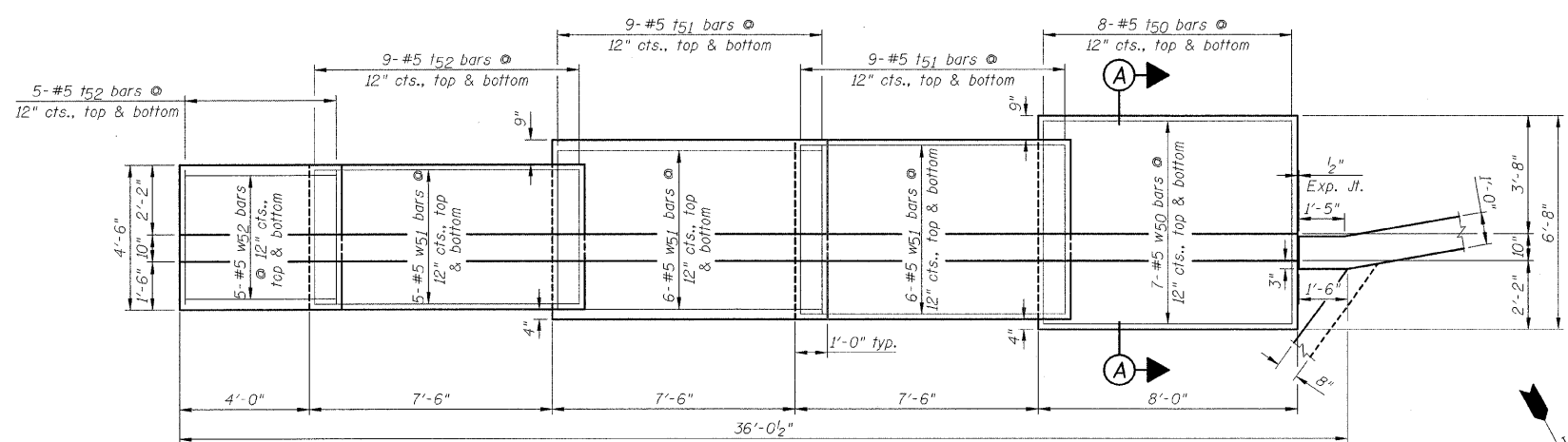
**UPPER SOUTHWEST CORNER PLAN**



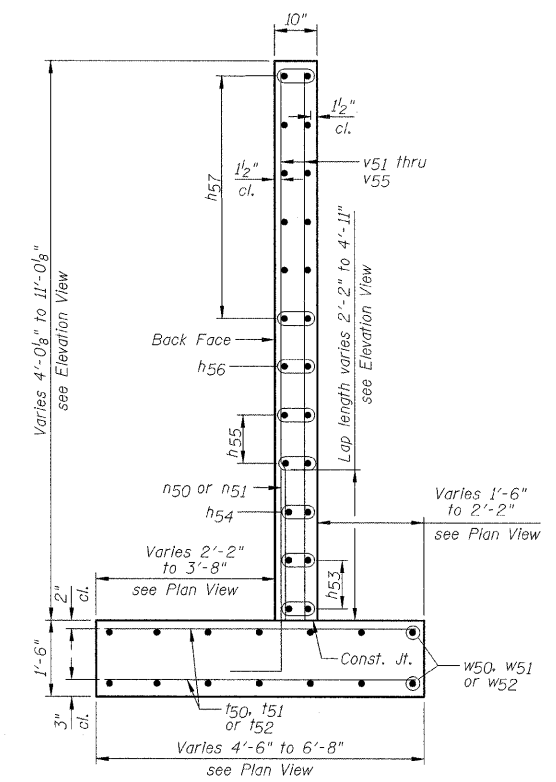
**LOWER SOUTHWEST CORNER PLAN**

**BAR DESIGNATION**

	Bar	No. (E.F.)	Size	Spacing
(A)	h53	2	#5	12"
(B)	h54	1	#5	N/A
(C)	h55	2	#5	12"
(D)	h56	1	#5	N/A



**SOUTHWEST RETAINING WALL PLAN**



**SECTION A-A**

- NOTES:**
- 1.) See Sheet C21 for Bar Bending Diagrams, Bill of Material and joint details.
  - 2.) Calculated maximum soil pressure = 2090 psf.
  - 3.) Bend or cut vertical bars as required to fit.
  - 4.) For bar lap lengths, see the General Notes on Sheet C2.

DESIGNED - SDH	REVISED -
DRAWN - JWK	REVISED -
CHECKED - MSW	REVISED -
DATE - 07/22/2009	REVISED -

<b>TOWN OF NORMAL</b>		<b>SOUTHWEST CORNER DETAIL AND RETAINING WALL</b>	
SCALE:	SHEET NO. C19 OF 23 SHEETS	STA.	TO STA.

<b>VIRGINIA AVENUE OVER SUGAR CREEK</b>	
<b>SECTION 04-00226-00-BR</b>	
<b>MCLEAN COUNTY</b>	

F.A.U.	SECTION	COUNTY	TOTAL SHEETS	SHEET NO.
6366	04-00226-00-BR	MCLEAN	52	40
<b>S.N. 057-7834</b>		<b>CONTRACT NO. 91416</b>		
FED. ROAD DIST. NO.		ILLINOIS FED. AID PROJECT		