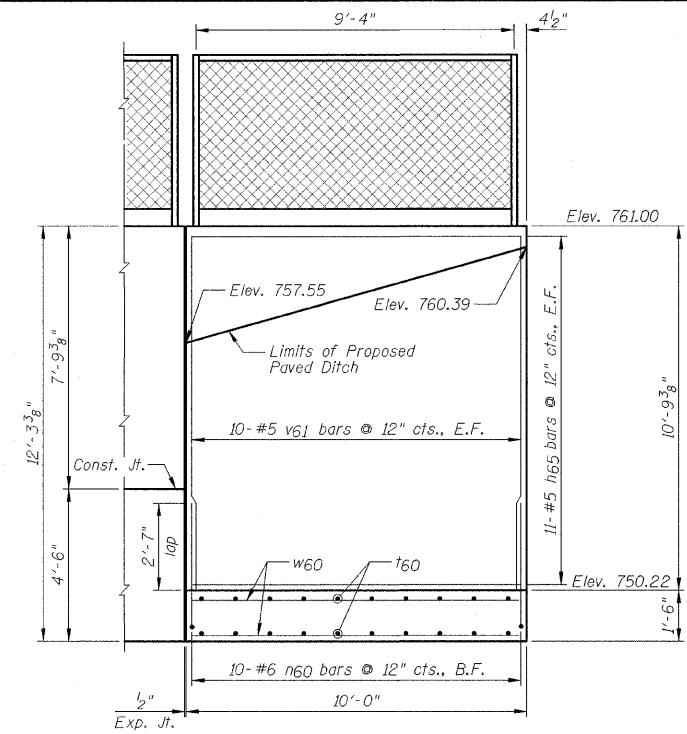
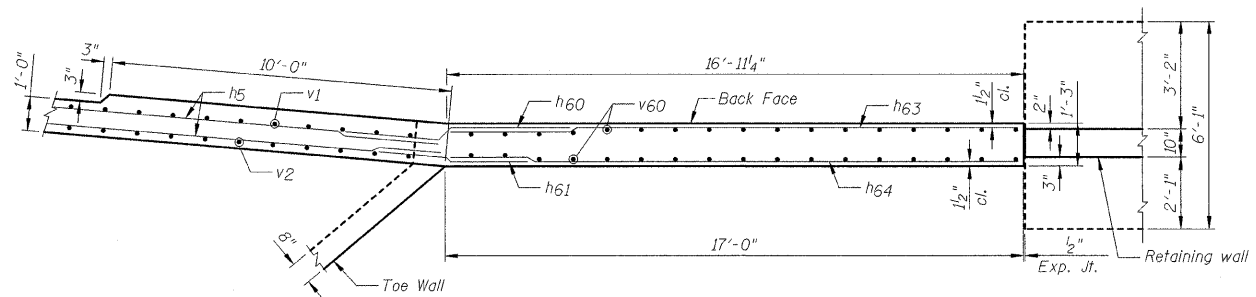


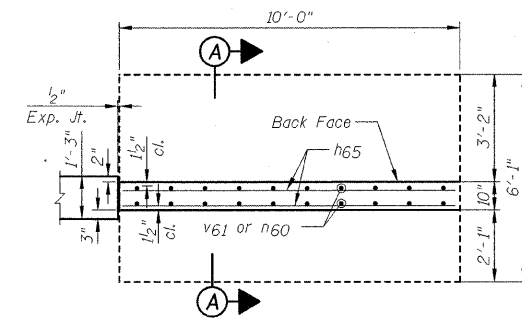
**NORTHWEST WINGWALL ELEVATION**



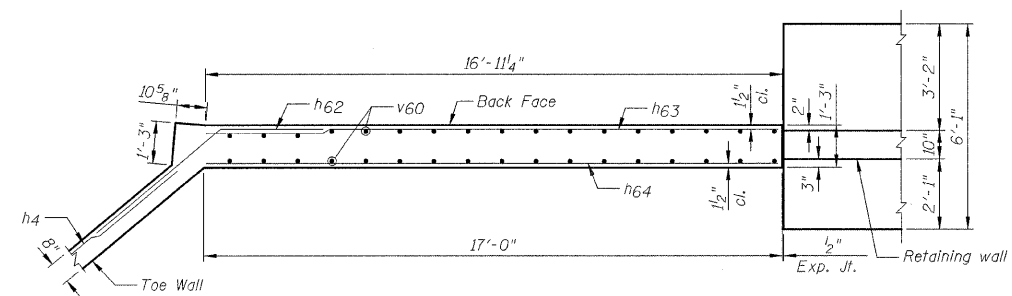
**NORTHWEST RETAINING WALL ELEVATION**



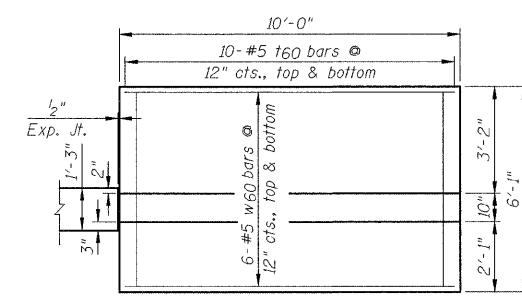
**UPPER NORTHWEST WINGWALL PLAN**



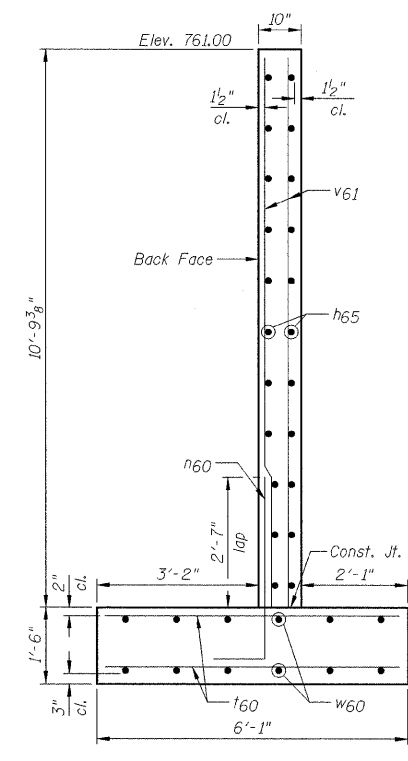
**UPPER NORTHWEST RETAINING WALL PLAN**



**LOWER NORTHWEST WINGWALL PLAN**



**LOWER NORTHWEST RETAINING WALL PLAN**



**SECTION A-A**

**NOTES:**

- 1.) See Sheet C21 for Bar Bending Diagrams, Bill of Material and joint details.
- 2.) Calculated maximum soil pressure = 2010 psf.
- 3.) For bar lap lengths, see the General Notes on Sheet C2.

DESIGNED - SDH	REVISED -
DRAWN - JWK	REVISED -
CHECKED - MSW	REVISED -
DATE - 07/22/2009	REVISED -

<b>TOWN OF NORMAL</b>	
-----------------------	--

<b>NORTHWEST WINGWALL AND RETAINING WALL</b>	
SCALE:	STA. TO STA.

<b>VIRGINIA AVENUE OVER SUGAR CREEK</b>	
<b>SECTION 04-00226-00-BR</b>	
<b>MCLEAN COUNTY</b>	

F.A.U.	SECTION	COUNTY	TOTAL SHEETS	SHEET NO.
6366	04-00226-00-BR	MCLEAN	52	41
<b>S.N. 057-7834</b>		<b>CONTRACT NO. 91416</b>		
FED. ROAD DIST. NO.		ILLINOIS FED. AID PROJECT		