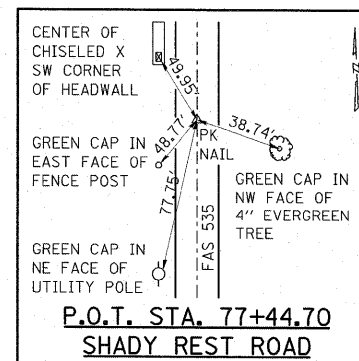
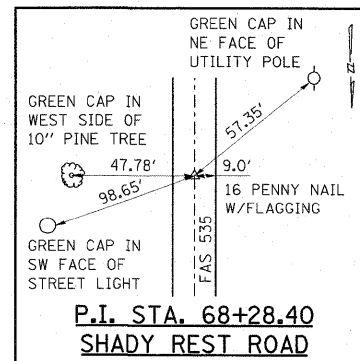
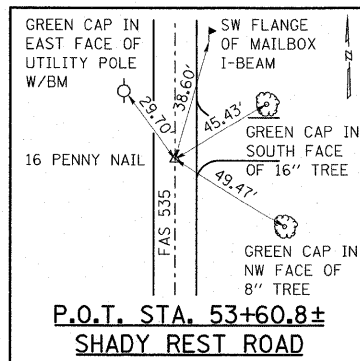
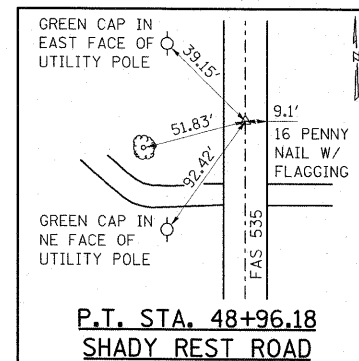
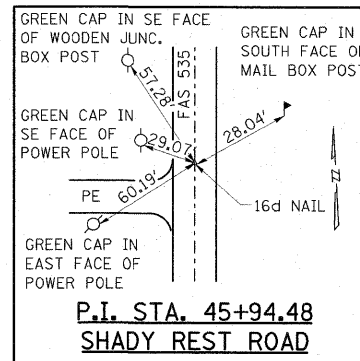
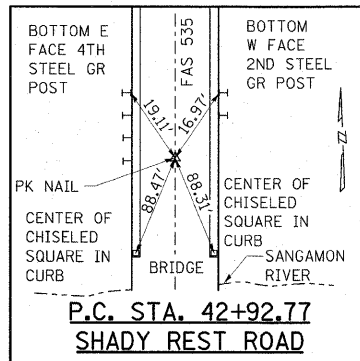
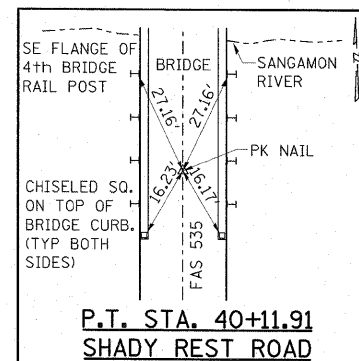
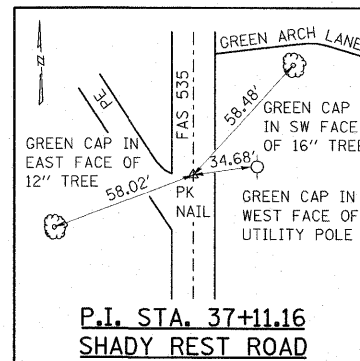
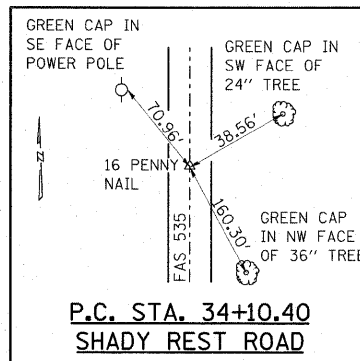
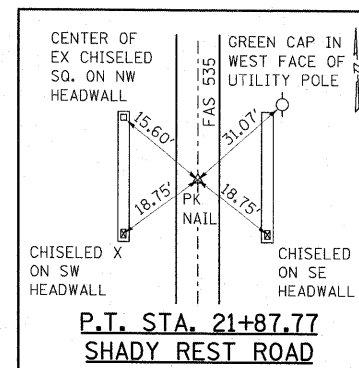
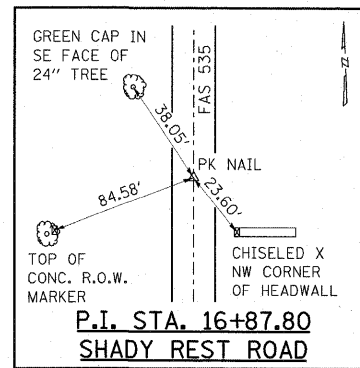
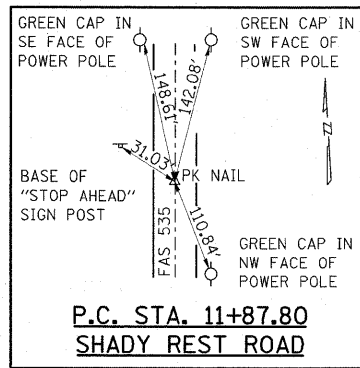




SHADY REST ROAD BENCHMARKS
(IN ORDER FROM SOUTH TO NORTH)

BM #6	RR SPIKE IN PP NW CORNER INTERSECTION OLD RTE 47 & SHADY REST ROAD, ELEV. 703.58
BM #101	RR SPIKE IN PP E SIDE SHADY REST ROAD 0.1 MI N OLD RTE 47, ELEV. 708.04
BM #102	RR SPIKE IN PP E SIDE SHADY REST ROAD 0.18 MI N OLD RTE 47, ELEV. 703.49
BM #103	RR SPIKE IN PP E SIDE SHADY REST ROAD 0.28 MI N OLD RTE 47, ELEV. 690.57
BM #104	RR SPIKE IN 14" TREE W SIDE SHADY REST ROAD 0.36 MI N OLD RTE 47, ELEV. 672.91
BM #105	RR SPIKE IN PP W SIDE SHADY REST ROAD 0.46 MI N OLD RTE 47, ELEV. 661.45
BM #106	RR SPIKE IN PP W SIDE SHADY REST ROAD 0.51 MI N OLD RTE 47, ELEV. 653.16
BM #114	RR SPIKE IN PP W SIDE SHADY REST ROAD 0.58 MI N OLD RTE 47, ELEV. 649.51
BM #107	CHISELED SQUARE ON T/O HUBGUARD @ SW CORNER OF BRIDGE OVER SANGAMON RIVER, ELEV. 655.85
BM #8	CHISELED SQUARE ON T/O HUBGUARD @ NW CORNER OF BRIDGE OVER SANGAMON RIVER, ELEV. 655.89
BM #108	RR SPIKE IN PP W SIDE SHADY REST ROAD 0.79 MI N OLD RTE 47, ELEV. 654.41
BM #109	RR SPIKE IN PP W SIDE SHADY REST ROAD 0.89 MI N OLD RTE 47, ELEV. 656.07
BM #9	RR SPIKE IN PP W SIDE SHADY REST ROAD 0.92 MI N OLD RTE 47, ELEV. 666.01
BM #110	US ARMY CORPS OF ENGINEERS MONUMENT 1.01 MI N OLD RTE 47, ELEV. 675.57
BM #111	RR SPIKE IN PP E SIDE SHADY REST ROAD 1.1 MI N OLD RTE 47, ELEV. 677.15
BM #112	RR SPIKE IN PP W SIDE SHADY REST ROAD 1.2 MI N OLD RTE 47, ELEV. 682.71
BM #10	RR SPIKE IN PP W SIDE SHADY REST ROAD 1.3 MI N OLD RTE 47, ELEV. 690.04
BM #113	RR SPIKE IN PP W SIDE SHADY REST ROAD 1.4 MI N OLD RTE 47, ELEV. 688.02



CENTERLINE TIES

CONTRACT NO. 91421				
FAS RTE	SECTION	COUNTY	TOTAL SHEETS	SHEET NO.
**	*	PIATT	53	9
STA.	TO STA.			
FED. ROAD DIST. NO.	ILLINOIS	FED. AID PROJECT AID		
* 08-00115-01-RS				
** FAS 535				

ESCA
CONSULTANTS, INC.

DESIGNED BY:	ELH	01/09
DRAWN BY:	cj/HAS	01/09
CHECKED BY:	ELH	04/09
APPROVED BY:	RDP	04/09

TIES & BENCHMARKS
FAS 535 (SHADY REST ROAD)
SECTION 08-00115-01-RS
PIATT COUNTY