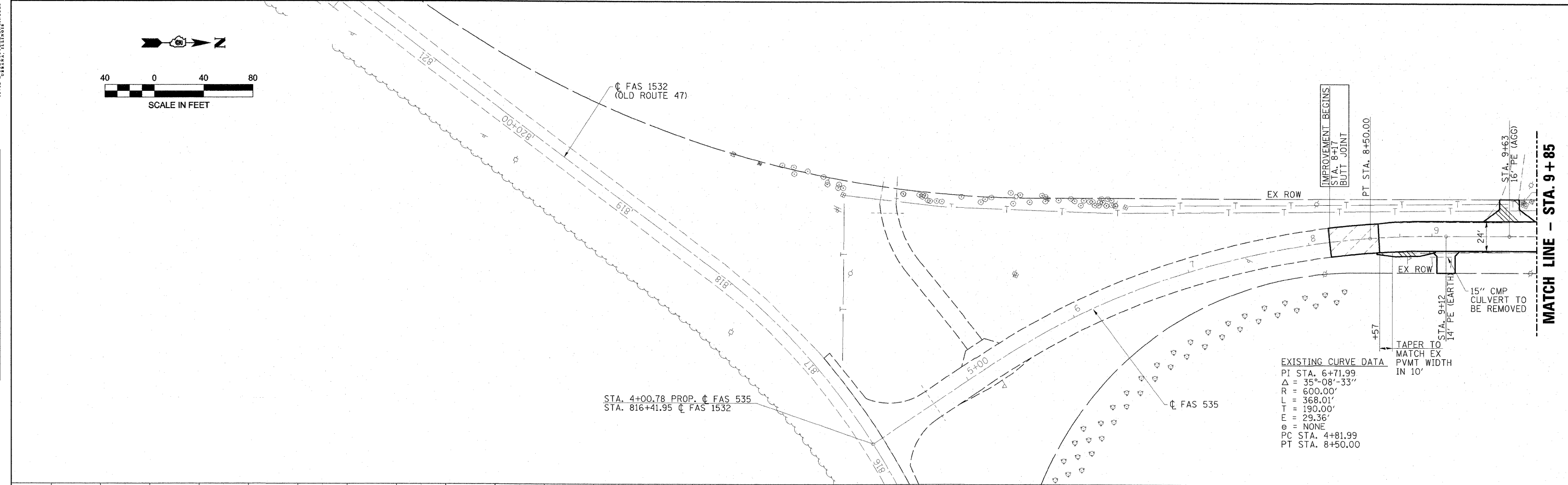
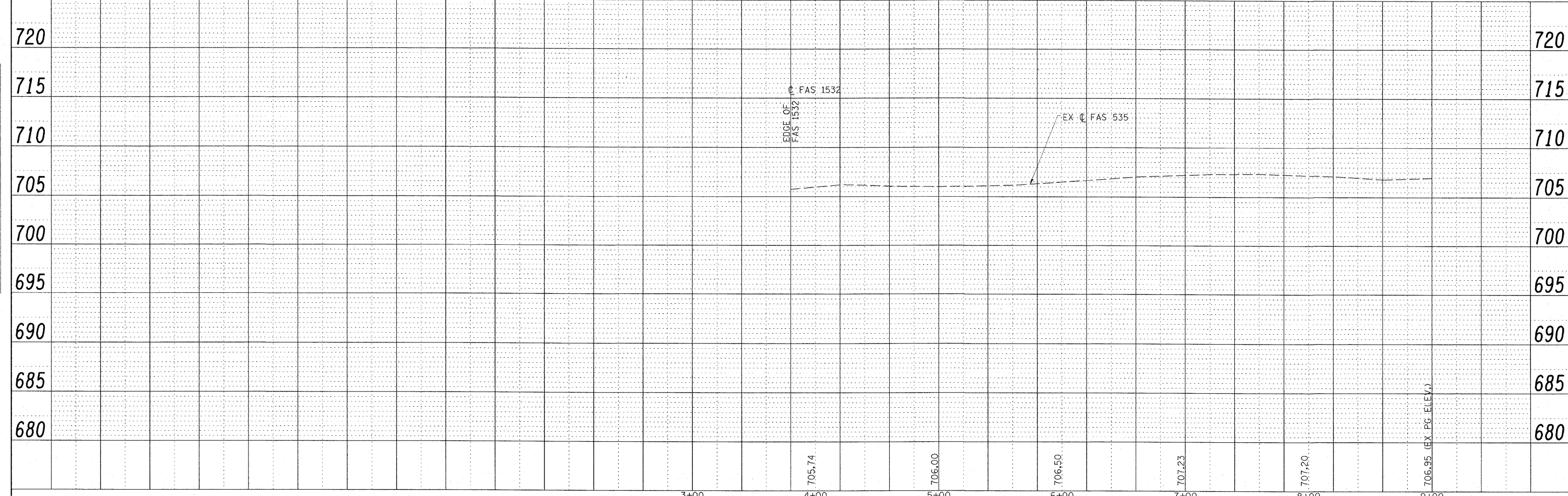


PLAN	DESIGNED	DATE
	BY	
	CHECKED	
	DATE	
	NO.	

PROFILE	DESIGNED	DATE
	BY	
	CHECKED	
	DATE	
	NO.	



EXISTING CURVE DATA  
 PI STA. 6+71.99  
 $\Delta = 35^{\circ} 08' - 33''$   
 R = 600.00'  
 L = 368.01'  
 T = 190.00'  
 E = 29.36'  
 e = NONE  
 PC STA. 4+81.99  
 PT STA. 8+50.00



FILE NAME = Z4402F01.dgn	USER NAME = HAS	DESIGNED - ELH	REVISED -	<b>STATE OF ILLINOIS DEPARTMENT OF TRANSPORTATION</b>	<b>FAS 535 (SHADY REST ROAD) PLAN &amp; PROFILE</b>		F.A.S. RTE. = 535	SECTION = 08-00115-01-RS	COUNTY = PIATT	TOTAL SHEETS = 53	SHEET NO. = 10	
SCALE: (HORIZ) 1"=20' (VERT) 1"=5'	PLOT SCALE = 40,0000' / IN.	DRAWN - HAS	REVISED -		SCALE: 1"=40'	SHEET NO. 1 OF 8 SHEETS	STA. 3+00 TO STA. 9+85	CONTRACT NO. 91421				
PLOT DATE = 7/13/2009 2:24:55 PM	DATE = 07/13/09	CHECKED - ELH	REVISED -		FED. ROAD DIST. NO. ILLINOIS FED. AID PROJECT							