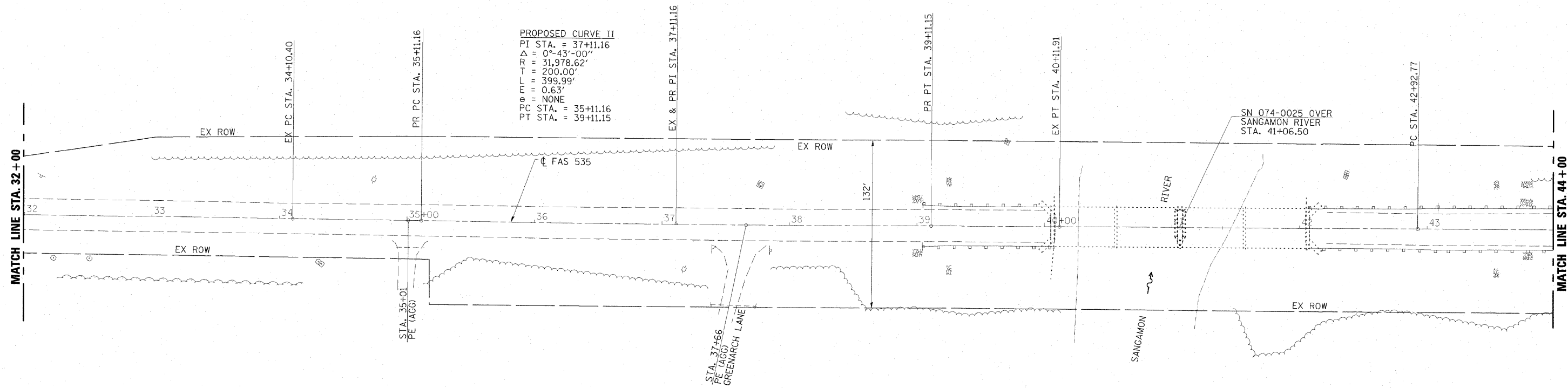
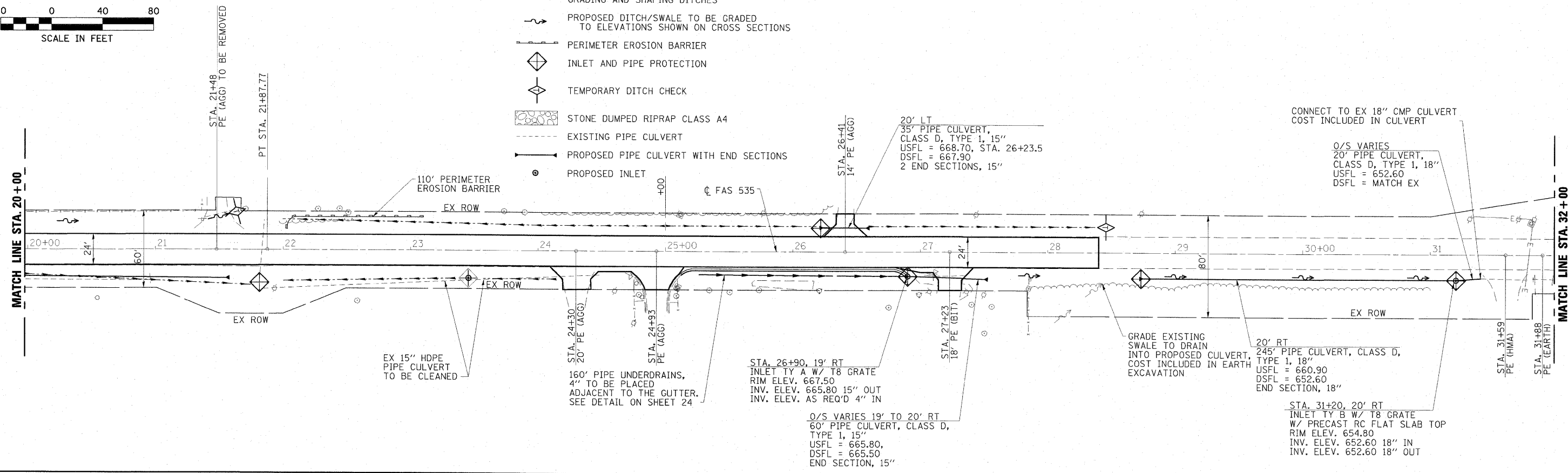


**LEGEND**

- GRADING AND SHAPING DITCHES
- PROPOSED DITCH/SWALE TO BE GRADED TO ELEVATIONS SHOWN ON CROSS SECTIONS
- PERIMETER EROSION BARRIER
- ◇ INLET AND PIPE PROTECTION
- ◇ TEMPORARY DITCH CHECK
- STONE DUMPED RIPRAP CLASS A4
- EXISTING PIPE CULVERT
- PROPOSED PIPE CULVERT WITH END SECTIONS
- PROPOSED INLET



USER NAME = HAS	DESIGNED - ELH	REVISED -
PLOT SCALE = 0.0833" / IN.	DRAWN - HAS	REVISED -
PLOT DATE = 7/13/2009 2:23:37 PM	CHECKED - ELH	REVISED -
	DATE - 04/03/09	REVISED -

**STATE OF ILLINOIS  
DEPARTMENT OF TRANSPORTATION**

**EROSION CONTROL AND DRAINAGE PLAN**

SCALE: 1"=40'-0" SHEET NO. 2 OF 4 SHEETS STA. 20+00 TO STA. 44+00

F.A.P. RTE. 535	SECTION 08-00115-01-RS	COUNTY PIATT	TOTAL SHEETS 53	SHEET NO. 19
FED. ROAD DIST. NO. ILLINOIS FED. AID PROJECT				

CONTRACT NO. 91421