

NOTE: ALL STATION SHOWN CORRESPONDS TO THAT SHOWN ON EXISTING RIGHT OF WAY PLANS

BM #1
R.R. SPIKE IN POWER POLE
STA. 138+61.25 45' LEFT
ELEV. 599.56

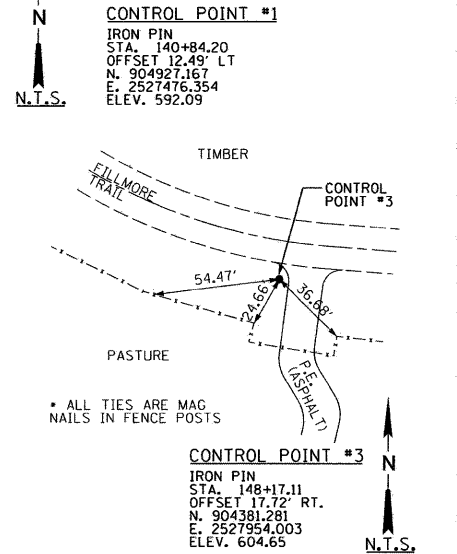
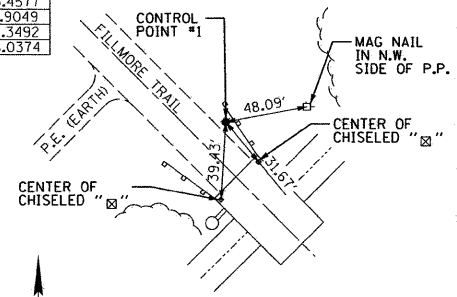
ENTRANCES TO BE BUILT
STA. 139+75 RT.
FIELD ENTRANCE (EARTH @ 6.5% GRADE)
WIDTH TO MATCH EXISTING (±18.5')

SAMUEL E. & JOSEPHINE M. MCCALL

BRACKEBUSCH FARMS, INC.

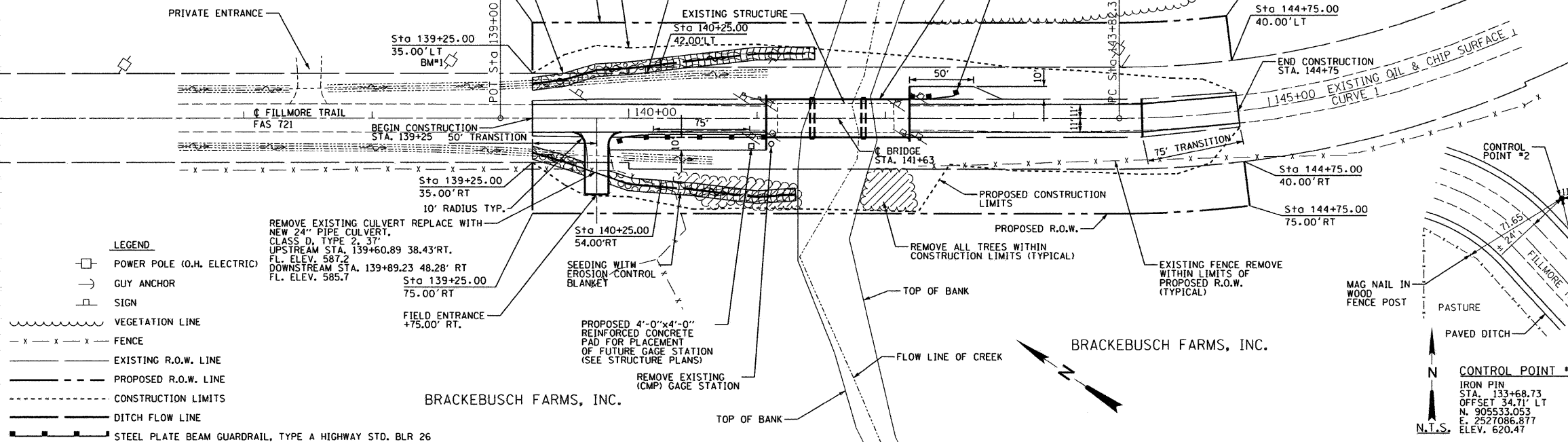
CURVE 1
P.I. STA= 148+35.89
Δ= 61° 23' 49" (LT)
D= 7° 30' 00"
R= 763.94
T= 453.57
L= 818.62
E= 124.50
P.C. STA= 143+82.32
P.T. STA= 152+00.94
S.E. (SEE CROSS SECTIONS)

COORDINATE TABLE			
DESCRIPTION	STATION	NORTH	EAST
P.O.T.	139+00.00	905073.2451	2527363.4577
P.C. CURVE 1	143+82.32	904672.5349	2527631.9049
P.I. CURVE 1	148+35.89	904295.7133	2527884.3492
P.T. CURVE 1	152+00.94	904336.9493	2528336.0374



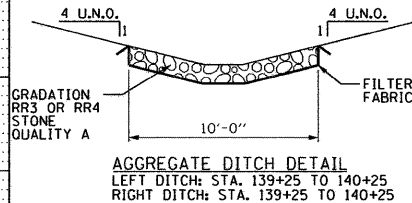
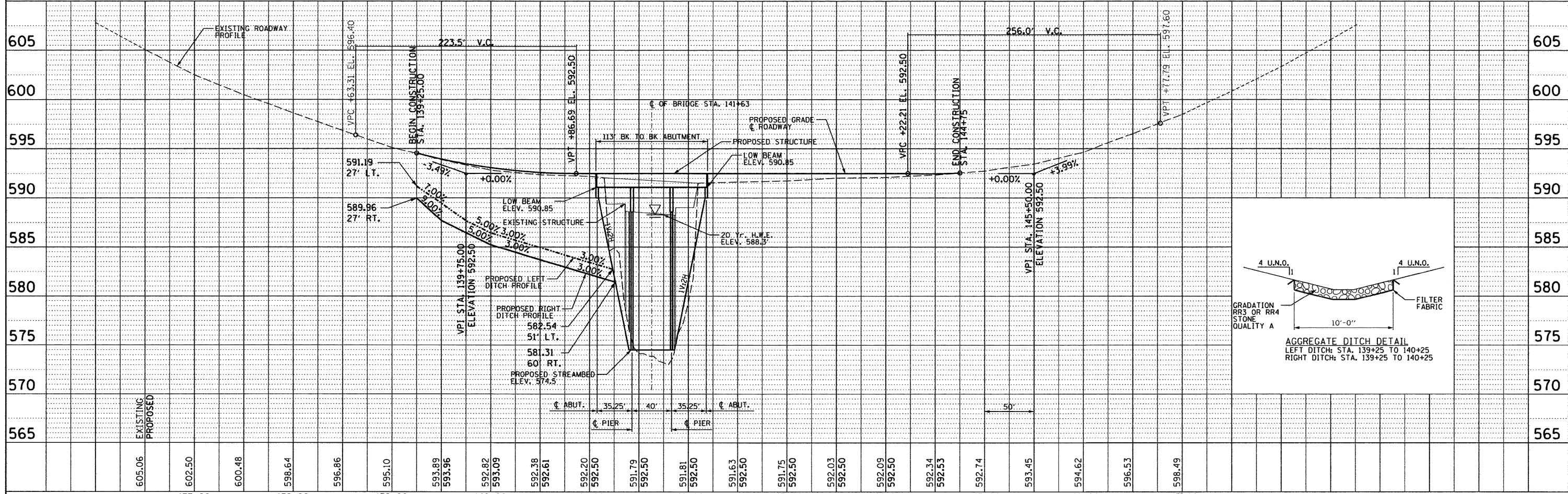
DATE	BY

DATE	BY



- LEGEND**
- POWER POLE (O.H. ELECTRIC)
 - GUY ANCHOR
 - ⊠ SIGN
 - ~~~~~ VEGETATION LINE
 - - - - - FENCE
 - — — — — EXISTING R.O.W. LINE
 - - - - - PROPOSED R.O.W. LINE
 - - - - - CONSTRUCTION LIMITS
 - - - - - DITCH FLOW LINE
 - — — — — STEEL PLATE BEAM GUARDRAIL, TYPE A HIGHWAY STD. BLR 26

PART OF THE SOUTHEAST QUARTER OF SECTION 7, TOWNSHIP 8 NORTH, RANGE 2 WEST OF THE THIRD PRINCIPAL MERIDIAN, MONTGOMERY COUNTY, ILLINOIS



FILE NAME = plan&profile.dgn	USER NAME = EJ.R	DESIGNED - CMF	REVISED -	<p>McDonough-Whitow, P.C. Consulting Engineers & Land Surveyors 138 East Wood Street Hillboro, IL 62049 Phone: 217.532.9233 Fax: 217.532.4300 PROFESSIONAL DESIGN NO. 164-00254</p>	F.A.S. RTE. 721	SECTION 08-00128-00-BR	COUNTY MONTGOMERY	TOTAL SHEETS 22	SHEET NO. 6
PLOT SCALE = 50	DRAWN - EJR	CHECKED - KCM	REVISED -		<p align="center">PLAN AND PROFILE</p> <p>SCALE: 1"=50' SHEET NO. ___ OF ___ SHEETS STA. 139+25 TO STA. 144+75</p>				
PLOT DATE = 3-12-09	DATE - 3-12-09	REVISED -	REVISED -		<p align="right">CONTRACT NO. 093496</p> <p align="right">ILLINOIS FED. AID PROJECT</p>				
<p align="right">CONTRACT NO. 093496</p>									