

F.A.S. RTE.	SECTION	COUNTY	TOTAL SHEETS	SHEET NO.
721	08-00128-00-BR	MONTGOMERY	22	1
ILLINOIS CONTRACT NO. 03496				

- INDEX OF SHEETS**
- COVER SHEET
  - SUMMARY OF QUANTITIES
  - TYPICAL SECTIONS AND GENERAL NOTES
  - DETOUR PLAN
  - EROSION CONTROL PLAN
  - PLAN AND PROFILE
  - GENERAL PLAN AND ELEVATION
  - 8.-9. PPC DECK BEAM SUPERSTRUCTURE
  - 10.-11. 17"x36" PPC DECK BEAM
  12. 17"x36" PPC DECK BEAM DETAILS
  - STEEL RAILING, TYPE S-1
  - ABUTMENTS
  - PIERS
  - HP PILE DETAILS
  - 17.-18. SOIL BORINGS
  - 19.-22. CROSS SECTIONS

**HIGHWAY STANDARDS:** 000001-05  
 280001-04  
 515001-03  
 701901-01  
 BLR 21-8  
 BLR 22-6  
 BLR 23-3  
 BLR 26-1  
 BLR 27-1

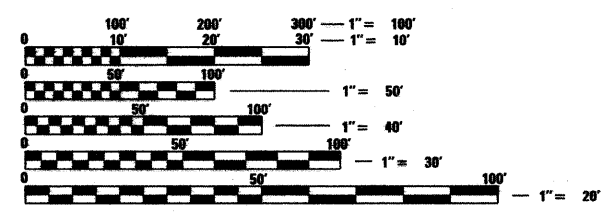
**DESIGN CLASSIFICATION**  
 Class: Major Collector  
 A.D.T.: 663 (2009), 843 (2029)  
 A.D.T.T.: ±5%  
 Design Speed: 40 mph

**UTILITY COMPANIES**

Telephone: Frontier Communications (402)250-1095  
 Consolidated Communications (800)500-9000

Gas & Electric: Ameren IP (618)236-6207

Water: Montgomery County Water Co. (618)252-8111



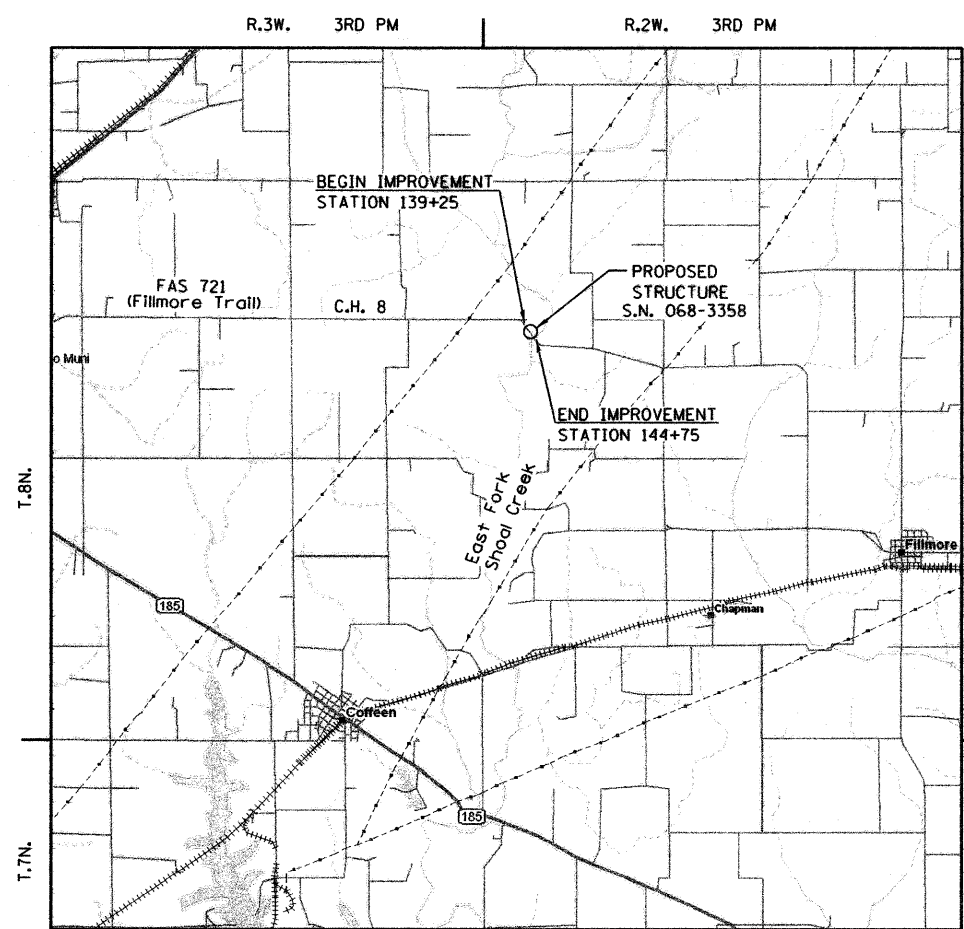
FULL SIZE PLANS HAVE BEEN PREPARED USING STANDARD ENGINEERING SCALES. REDUCED SIZED PLANS WILL NOT CONFORM TO STANDARD SCALES. IN MAKING MEASUREMENTS ON REDUCED PLANS, THE ABOVE SCALES MAY BE USED.

**J.U.L.I.E.**  
 JOINT UTILITY LOCATION INFORMATION FOR EXCAVATION  
 1-800-892-0123  
 OR 811

**PROJECT ENGINEER  
 PROJECT MANAGER**

**CONTRACT NO. 93496**

**STATE OF ILLINOIS**  
**AMERICAN RECOVERY AND REINVESTMENT PROGRAM**  
**PROPOSED BRIDGE PLANS**  
**C.H. 8 /F.A.S. 721 (FILLMORE TRAIL)**  
**SECTION 08-00128-00-BR**  
**PROJECT ARA-0721(219)**  
**MONTGOMERY COUNTY HIGHWAY DEPARTMENT**  
**MONTGOMERY COUNTY**  
**JOB NO. C-96-252-09**

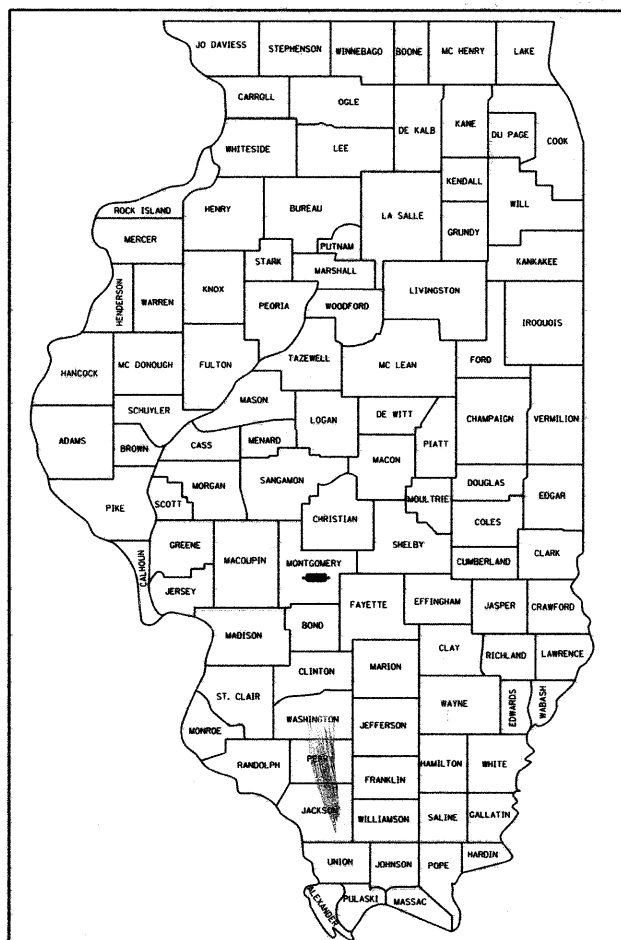


**LOCATION MAP**  
 GROSS LENGTH = 550.00 FT. = 0.104 MILE



**EXISTING STRUCTURE:**  
 THREE SPAN STEEL GIRDER BRIDGE WITH 7" CAST-IN-PLACE CONCRETE DECK SUPPORTED BY UNENCASED STEEL AND TIMBER PILES  
 22'-0" ROADWAY WIDTH  
 91'-0" LENGTH  
 0° SKEW  
 STRUCTURE NUMBER 068-3009

**PROPOSED STRUCTURE:**  
 THREE SPAN PPC DECK BEAM BRIDGE SUPPORTED BY INDIVIDUALLY ENCASED PILE BENT PIERS AND PILE BENT STUB ABUTMENTS  
 30'-0" OUT TO OUT DECK  
 113'-0" BK TO BK ABUTMENT  
 0° SKEW  
 STRUCTURE NUMBER 068-3358



**LOCATION OF SECTION INDICATED THUS: -**

**STATE OF ILLINOIS  
 DEPARTMENT OF TRANSPORTATION  
 DIVISION OF HIGHWAYS**

APPROVED 7-29 2009  
 COUNTY ENGINEER

PASSED 8-14 2009  
 DISTRICT 6 ENGINEER OF LOCAL ROADS AND STREETS  
 DISTRICT 6 ENGINEER OF CONSTRUCTION

RELEASING FOR BID 8-14 2009  
 BASED ON LIMITED REVIEW  
 DEPUTY DIRECTOR OF HIGHWAYS, REGION 4 ENGINEER



*Tom M. McDonough*  
 Signature Date 7-29-09

11/30/09  
 Expires

**PRINTED BY THE AUTHORITY  
 OF THE STATE OF ILLINOIS**

STATE OF ILLINOIS  
DEPARTMENT OF TRANSPORTATION

SUMMARY OF QUANTITIES

CODE NO.	ITEM	Unit	Quantity
20100500	TREE REMOVAL, ACRES	ACRE	0.3
20200100	EARTH EXCAVATION	CU YD	795
20300100	CHANNEL EXCAVATION	CU YD	263
*20400800	FURNISHED EXCAVATION	CU YD	766
25000200	SEEDING, CLASS 2	ACRE	0.8
25000400	NITROGEN FERTILIZER NUTRIENT	POUND	72
25000500	PHOSPHORUS FERTILIZER NUTRIENT	POUND	72
25000600	POTASSIUM FERTILIZER NUTRIENT	POUND	72
25000700	AGRICULTURAL GROUND LIMESTONE	TON	1.6
25100115	MULCH, METHOD 2	ACRE	0.8
25100630	EROSION CONTROL BLANKET	SQ YD	709
28000250	TEMPORARY EROSION CONTROL SEEDING	POUND	68
28000300	TEMPORARY DITCH CHECKS	EACH	8.0
28000400	PERIMETER EROSION BARRIER	FOOT	862
28100107	STONE RIPRAP, CLASS A4	SQ YD	850
28200200	FILTER FABRIC	SQ YD	850
28300400	AGGREGATE DITCH	TON	139
35101400	AGGREGATE BASE COURSE, TYPE B	TON	789
40300100	BITUMINOUS MATERIALS (PRIME COAT)	GALLON	321
40300300	BITUMINOUS MATERIALS (COVER AND SEAL COATS)	GALLON	963
40300500	COVER COAT AGGREGATE	TON	28

CODE NO.	ITEM	Unit	Quantity
40300600	SEAL COAT AGGREGATE	TON	14
50100100	REMOVAL OF EXISTING STRUCTURES	EACH	1
50105220	PIPE CULVERT REMOVAL	FOOT	37
50200100	STRUCTURE EXCAVATION	CU YD	77
50300225	CONCRETE STRUCTURES	CU YD	40.9
50300280	CONCRETE ENCASEMENT	CU YD	35.3
*50400305	PRECAST PRESTRESSED CONCRETE DECK BEAMS (17" DEPTH)	SQ FT	3338
50800205	REINFORCEMENT BARS, EPOXY COATED	POUND	5030
Δ 50900205	STEEL RAILING, TYPE S1	FOOT	223
51201600	FURNISHING STEEL PILES HP12X53	FOOT	624
51202305	DRIVING PILES	FOOT	216
51203600	TEST PILE STEEL HP12X53	EACH	2
51204650	PILE SHOES	EACH	10
51500100	NAME PLATES	EACH	1
54201069	PIPE CULVERTS, CLASS D, TYPE 2 24"	FOOT	37
Δ 63000002	STEEL PLATE BEAM GUARDRAIL, TYPE A, 6.75 FOOT POSTS	FOOT	75.0
Δ 63100075	TRAFFIC BARRIER TERMINAL, TYPE 5A	EACH	2
63100100	MOBILIZATION	L SUM	1
*70103700	TRAFFIC CONTROL COMPLETE	L SUM	1
Δ *LR631020	TRAFFIC BARRIER TERMINAL, TYPE 1	EACH	2
*X5010205	REMOVAL OF EXISTING STRUCTURE, SPECIAL	EACH	1
*Z0065000	SETTING PILES IN ROCK	EACH	12

\* DENOTES PAY ITEM WITH SPECIAL PROVISION


Δ SPECIALTY ITEMS

CONSTRUCTION TYPE CODE: X080-2A

EARTHWORK SCHEDULE

EARTH EXCAVATION                    795 CU. YD.  
REQ. EMBANKMENT FILL            1362 CU. YD.  
LESS 75% EXCAVATION            -596 CU. YD.

FURNISHED EXCAVATION            766 CU. YD.  
(WASTE CHANNEL EXCAVATION)

USER NAME = RNH	DESIGNED - CMF	REVISED -	 McDonough-Whitlow, P.C. Consulting Engineers & Land Surveyors 138 East Wood Street Hillboro, IL 62049 Phone: 217.532.9233 Fax: 217.532.6300 PROFESSIONAL DESIGN NO. 081-00254	<b>SUMMARY OF QUANTITIES</b>		F.A.S. RTE.	SECTION	COUNTY	TOTAL SHEETS	SHEET NO.	
PLOT SCALE = NONE	DRAWN - RNH	REVISED -		SCALE: NONE	SHEET NO. 2 OF 22 SHEETS	STA. TO STA.	721	08-00128-00-BR	MONTGOMERY	22	2
PLOT DATE = --	CHECKED - TMM	REVISED -								CONTRACT NO. 09406	
	DATE - --	REVISED -								ILLINOIS FED. AID PROJECT	

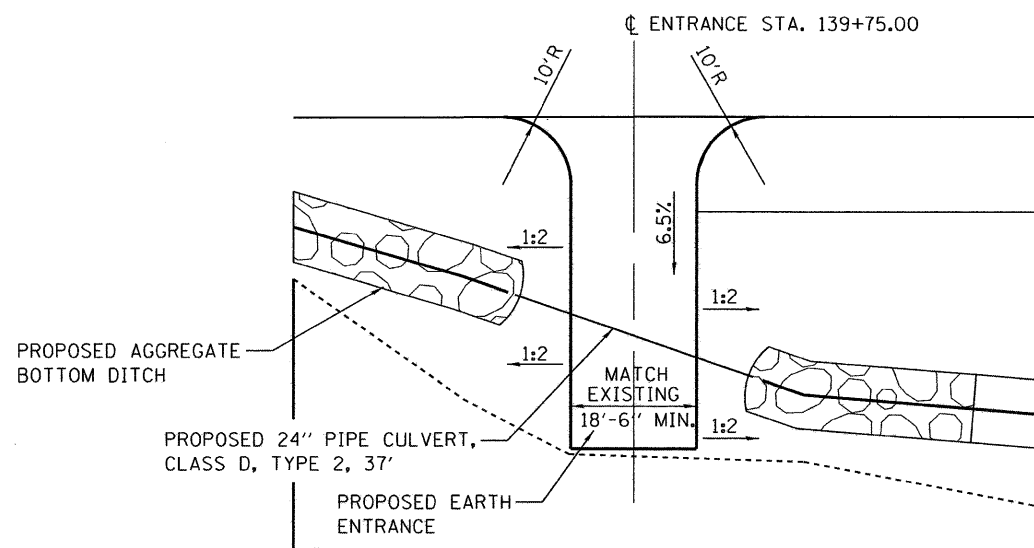
STATE OF ILLINOIS  
DEPARTMENT OF TRANSPORTATION

GENERAL NOTES:

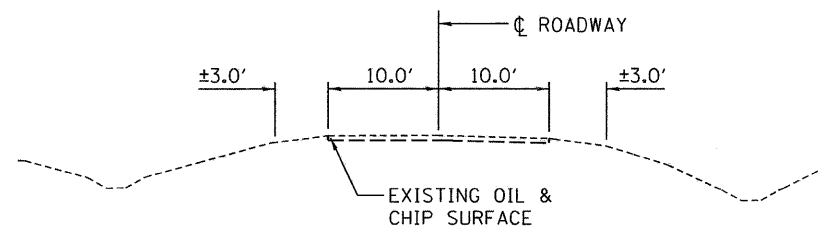
1. ALL ELEVATIONS REFER TO U.S.G.S. MEAN SEA LEVEL.
2. IF SECTION OR SUB-SECTION MONUMENTS ARE ENCOUNTERED, THE ENGINEER SHALL BE NOTIFIED BEFORE SUCH MONUMENTS ARE REMOVED. THE CONTRACTOR SHALL PROTECT AND CAREFULLY PRESERVE ALL PROPERTY MARKERS AND MONUMENTS UNTIL THE OWNER, AND AUTHORIZED SURVEYOR OR AGENT HAS WITNESSED OR OTHERWISE REFERENCED THEIR LOCATION.
3. UTILITIES ARE SHOWN IN ACCORDANCE WITH THE BEST AVAILABLE INFORMATION AND THEIR TRUE LOCATION IS NOT GUARANTEED TO BE AS SHOWN ON THE PLANS. IT WILL BE THE CONTRACTORS RESPONSIBILITY TO DETERMINE THE EXACT LOCATION OF ALL UTILITIES AND CARRY ON HIS OPERATIONS ACCORDINGLY.
4. THE STANDARDS WITH THE REVISION NUMBER LISTED IN THE INDEX OF SHEETS, INCLUDED IN THE PLANS SHALL HOLD PRECEDENCE OVER THE STANDARD NUMBERS LISTED IN THE SPECIAL PROVISIONS OR PLANS OF THE CONTRACTOR.
5. EXCEPT AS NOTED ON THE PLANS, PAVEMENT GRADES SHOWN ARE AT THE TOP OF PAVEMENT SURFACES.
6. BEFORE ORDERING PIPE CULVERTS OR PIPE DRAINS, THE CONTRACTOR SHALL CONSULT THE ENGINEER FOR EXACT LENGTHS.
7. FOR STABILIZATION, ALL TYPE III BARRICADES SHALL REQUIRE A MINIMUM OF FOR SAND BAGS PER BARRICADE.
8. SEEDING SHALL NOT BE PERMITTED AT ANY TIME WHEN THE GROUND IS FROZEN, WET, OR IN AN UN TILLABLE CONDITION. LOCATIONS TO BE SEEDED WILL BE DETERMINED BY THE ENGINEER.
9. THE FINISHED EARTHWORK SHALL HAVE A VEGETATION SUSTAINING SOIL COVERING THE TOP FOUR INCHES IN AREAS TO BE SEEDED OR SODDED. THE VEGETATION SUSTAINING SOIL REQUIRED WILL NOT BE PAID FOR SEPARATELY BUT SHALL BE INCLUDED IN THE COST OF EARTH EXCAVATION.

COMMITMENTS

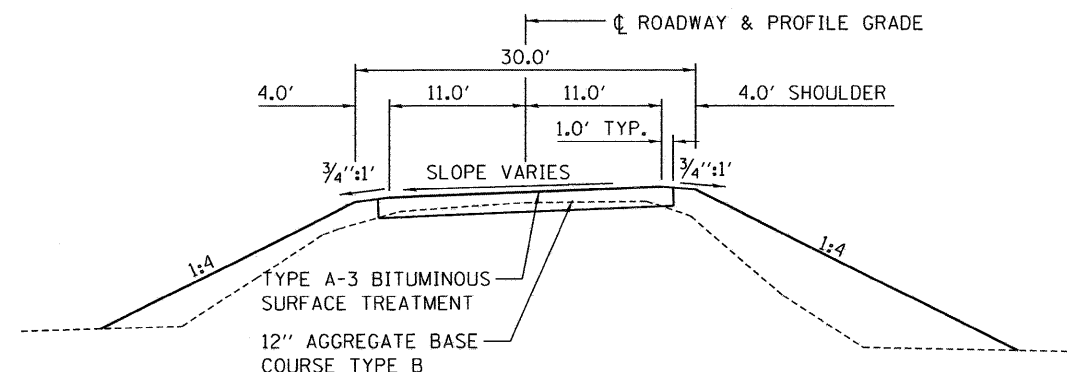
A STREAMFLOW GAGE STATION OPERATED BY THE UNITED STATES GEOLOGICAL SURVEY IS LOCATED AT THE NORTHWEST QUADRANT OF THE EXISTING STRUCTURE. THE U.S.G.S. WILL BE ALLOWED TO CONTINUOUSLY MONITOR STREAMFLOW AT A LOCATION WITHIN THE LOCAL AGENCY RIGHT OF WAY BOTH DURING AND AFTER CONSTRUCTION. A CONCRETE PAD WILL BE CONSTRUCTED FOR THE PLACEMENT OF A FUTURE GAGE.



ENTRANCE DETAIL

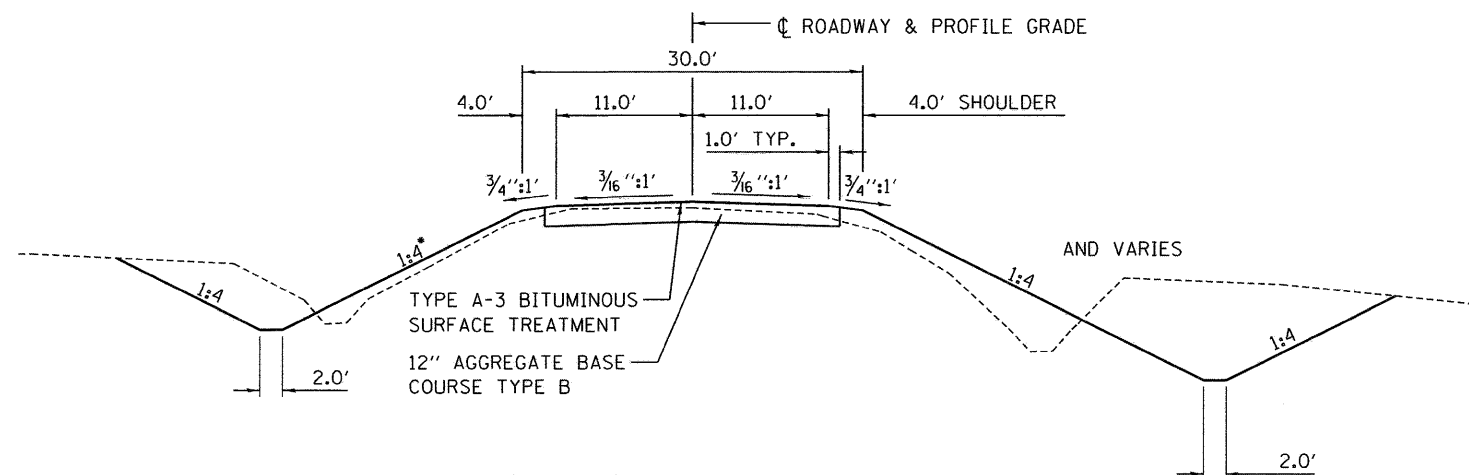


EXISTING ROADWAY CROSS SECTION



PROPOSED SUPERELEVATED ROADWAY CROSS SECTION

STA. 142+50 TO STA. 144+75



PROPOSED ROADWAY CROSS SECTION

STA. 139+25 TO STA. 141+00  
•SLOPE VARIES STA 142+25 TO 143+00 LEFT

PROPOSED FRONT SLOPES AND BACK SLOPES  
MAY VARY AT TRANSITION ZONES.

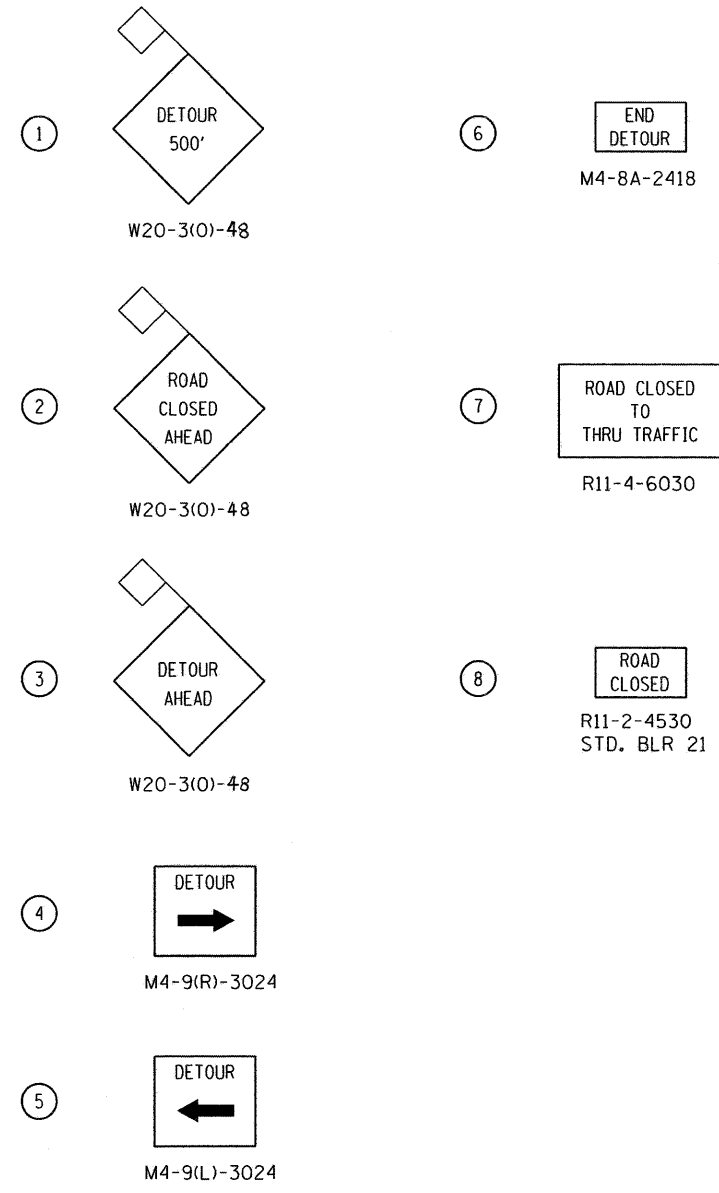
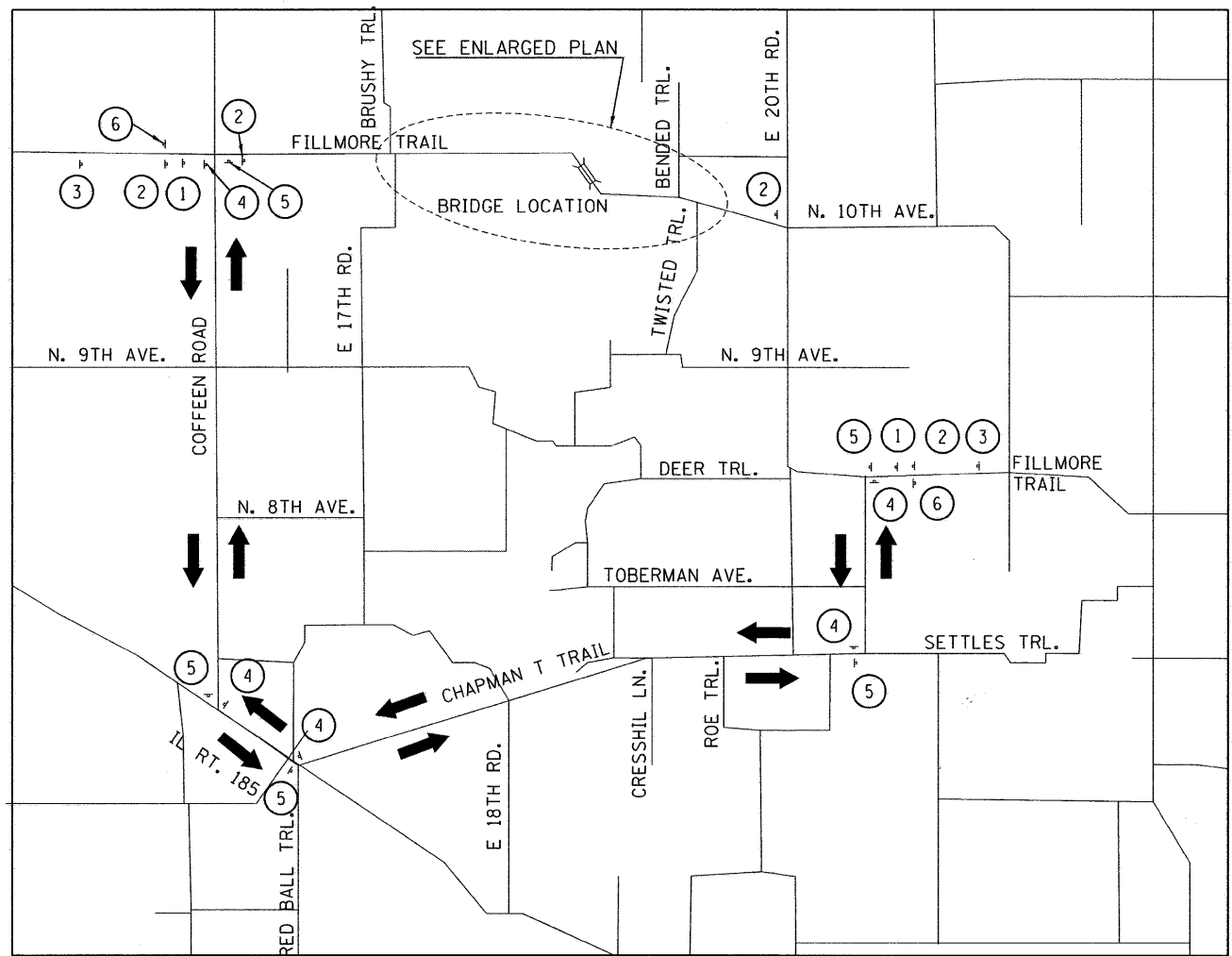
THE FOLLOWING RATES OF APPLICATION HAVE  
BEEN USED IN CALCULATING PLAN QUANTITIES.

BITUMINOUS MATERIALS (PRIME COAT)	0.3 GAL./S.Y.
BITUMINOUS MATERIALS (COVER & SEAL COATS)	0.3 GAL./S.Y.
COVER COAT AGGREGATE	25 LBS/S.Y.
SEAL COAT AGGREGATE	25 LBS/S.Y.
TEMPORARY DITCH CHECKS	5 TONS AGGREGATE

USER NAME = EJR	DESIGNED - CMF	REVISED -	McDonough-Whitlow, P.C. Consulting Engineers & Land Surveyors 138 East Wood Street Hillboro, IL 62049 Phone: 217.532.9233 Fax: 217.532.6393 PROFESSIONAL DESIGN NO. 161-00754	TYPICAL SECTIONS AND GENERAL NOTES		F.A.S. RTE.	SECTION	COUNTY	TOTAL SHEETS	SHEET NO.	
PLOT SCALE = NONE	DRAWN - EJR	REVISED -				721	08-00128-00-BR	MONTGOMERY	22	3	
PLOT DATE = --	CHECKED - TMM	REVISED -		SCALE: NONE		SHEET NO. 3 OF 21 SHEETS	STA.	TO STA.	CONTRACT NO. 03496		
	DATE - --	REVISED -							ILLINOIS FED. AID PROJECT		

STATE OF ILLINOIS  
DEPARTMENT OF TRANSPORTATION

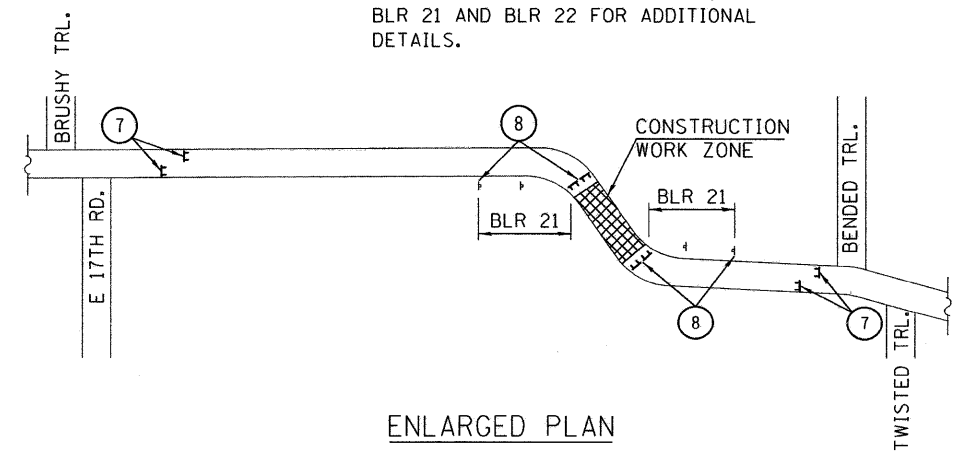
SIGN LEGEND



DETOUR PLAN

SCALE: NTS

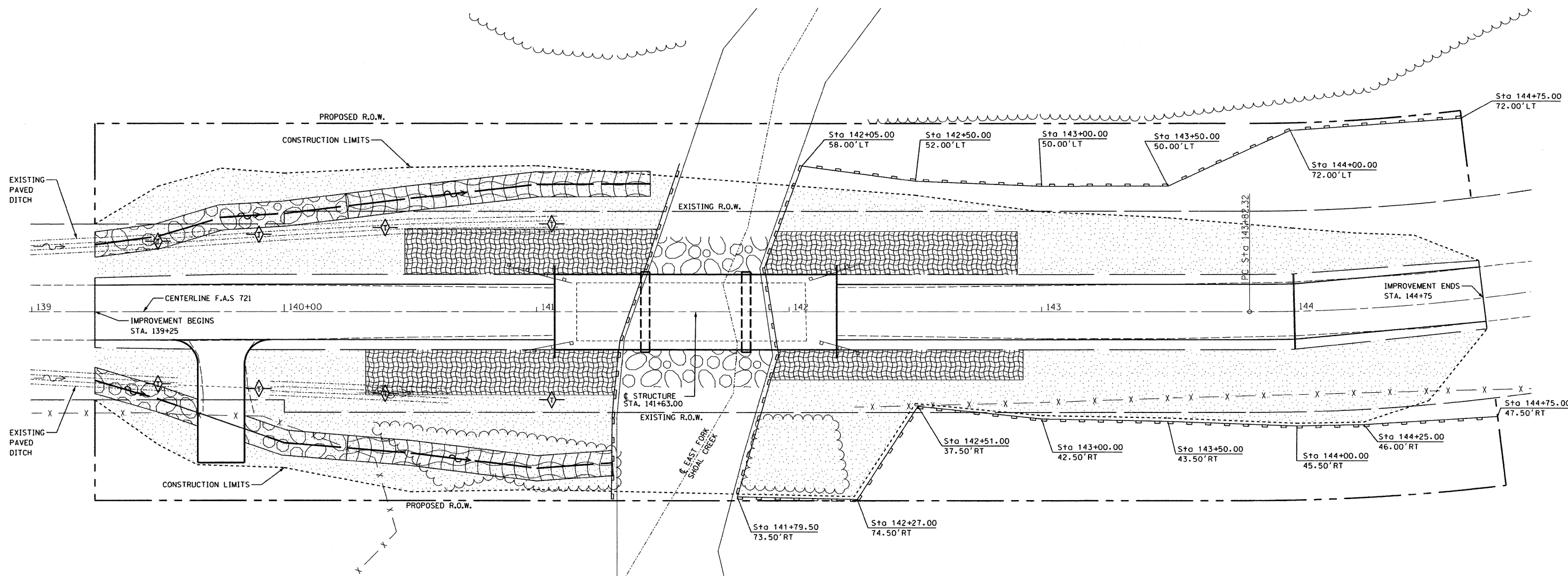
SEE HIGHWAY STANDARDS 701901, AND  
BLR 21 AND BLR 22 FOR ADDITIONAL  
DETAILS.



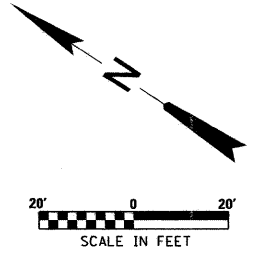
LEGEND

- 1 TYPE III BARRICADE
- 2 TEMPORARY TRAFFIC ADVISORY SIGN

USER NAME = RNH	DESIGNED - CMF	REVISED -	McDonough-Whitlow, P.C. Consulting Engineers & Land Surveyors 138 East Wood Street Hillboro, IL 62049 Phone: 217.532.9233 Fax: 217.532.6300 PROFESSIONAL DESIGN NO. 184-002754	<b>DETOUR PLAN</b>		F.A.S. RTE.	SECTION	COUNTY	TOTAL SHEETS	SHEET NO.
PLOT SCALE = NONE	DRAWN - RNH	REVISED -		721	08-00128-00-BR	MONTGOMERY	22	4		
PLOT DATE =	CHECKED - TMM	REVISED -		SCALE: NONE		SHEET NO. 4 OF 22 SHEETS	STA.	TO STA.	CONTRACT NO. 93496	
	DATE -	REVISED -							ILLINOIS FED. AID PROJECT	



NOTE: TEMPORARY DITCH CHECK REQUIRED IF PAVED DITCH IS REMOVED



LEGEND	
	TEMPORARY DITCH CHECK
	PERIMETER EROSION BARRIER
	TEMPORARY EROSION CONTROL SEEDING
	EROSION CONTROL BLANKET
	STONE RIP RAP, CLASS A4 AND FILTER FABRIC

FILE NAME =	USER NAME = #USER#	DESIGNED - ELL	REVISED -
#FILE#		DRAWN - EJR	REVISED -
	PLOT SCALE = #SCALE#	CHECKED - TMM	REVISED -
	PLOT DATE = #DATE#	DATE -	REVISED -

**STATE OF ILLINOIS  
DEPARTMENT OF TRANSPORTATION**

**EROSION CONTROL PLAN**

SCALE: SHEET NO. 5 OF 22 SHEETS STA. TO STA.

F.A.S. RTE.	SECTION	COUNTY	TOTAL SHEETS	SHEET NO.
721	08-00128-00-BR	MONTGOMERY	22	5
CONTRACT NO. 03496				
ILLINOIS FED. AID PROJECT				

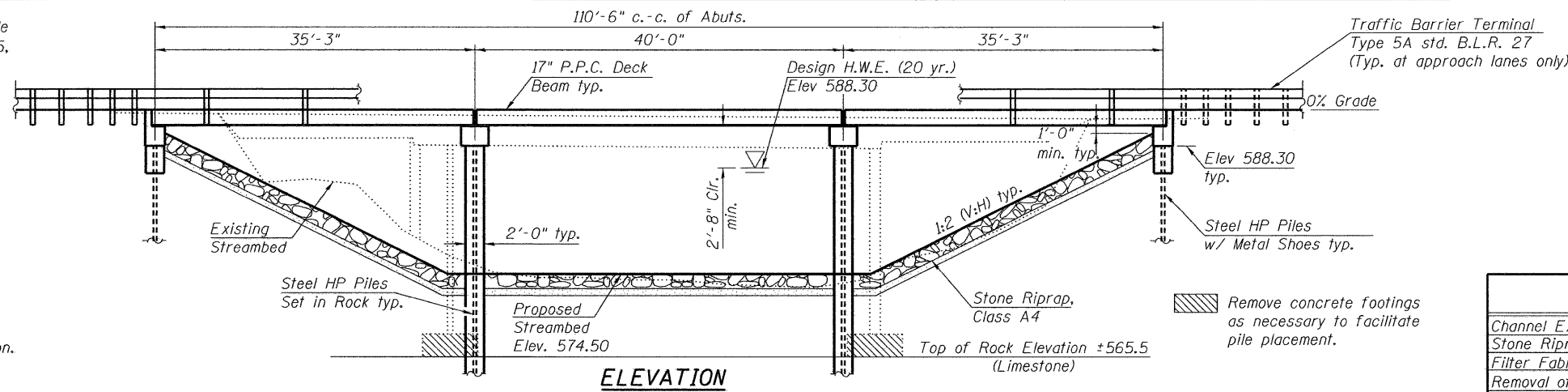


Bench Mark- Railroad spike in power pole north of Fillmore Trail, Station 138+61.25, 45' Left. Elevation 599.56.

Existing Structure S.N. 068-3009 was built in 1938 under Section 14-B MFT. The 3-span structure consists of a 7" cast-in-place concrete deck with bituminous overlay over steel stringers. The superstructure is supported by a combination of steel and wood piles, and steel bents on spread footings. The structure includes timber pile wingwalls and guardrail end sections. Overall dimensions are 22 feet wide by 91 feet long.

Traffic to be detoured during construction.

Salvage-No Salvage.

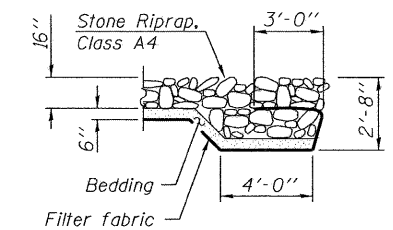
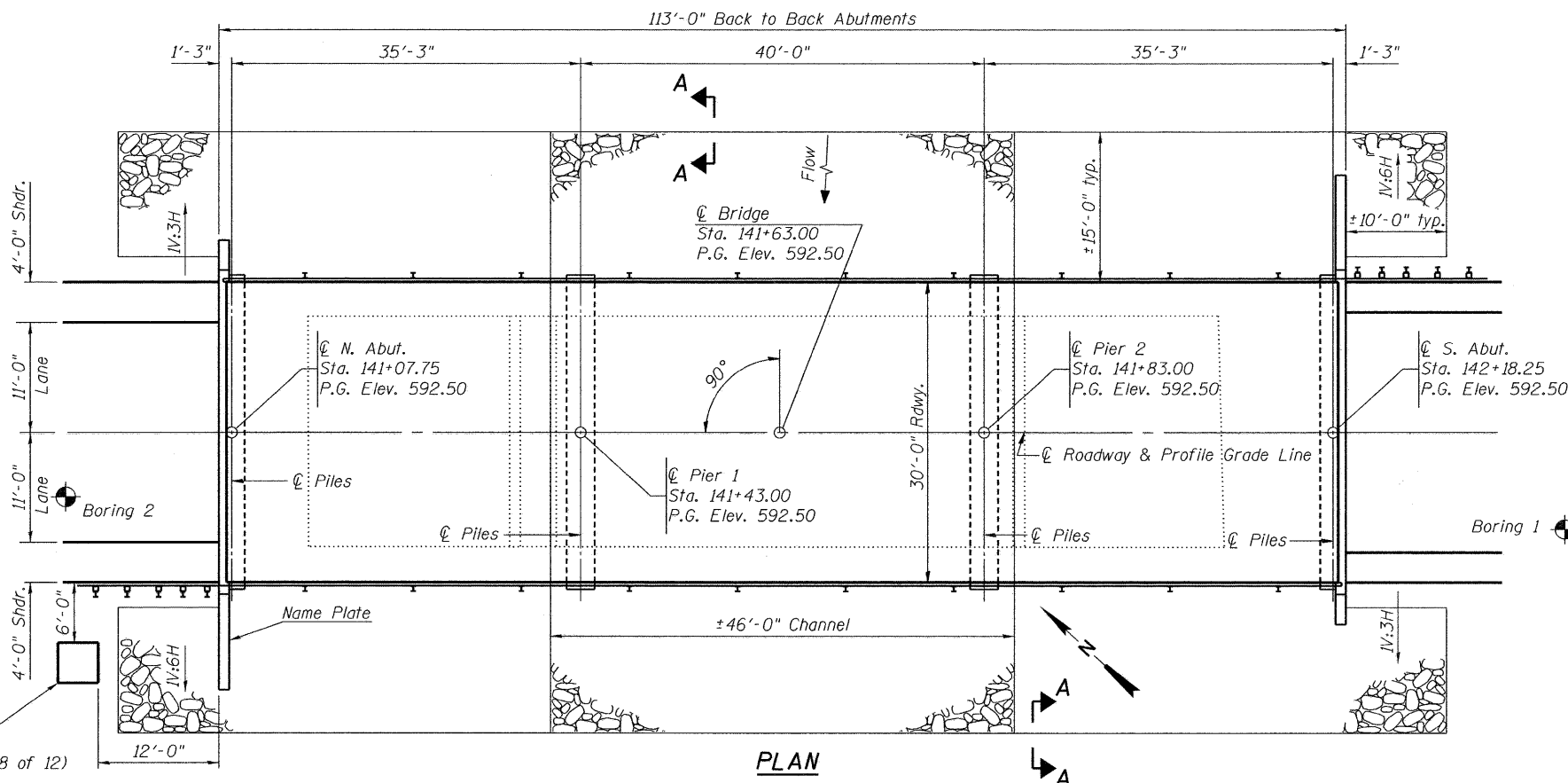


**GENERAL NOTES**

1. Reinforcement bars shall conform to the requirements of ASTM A 706 Gr 60. See Special Provisions.
2. Reinforcement bars designated (E) shall be epoxy coated.
3. Layout of the slope protection system may be varied to suit ground conditions in the field as directed by the Engineer.
4. The Contractor shall drive test piles to 110% of the nominal required bearing specified in production locations at substructures specified or approved by the Engineer before ordering the remainder of piles.

**TOTAL BILL OF MATERIAL**

Item	Unit	Super	Sub.		Total
			Piers	Abuts.	
Channel Excavation	Cu. Yd.	-	-	-	263
Stone Riprap, Class A4	Sq. Yd.	-	-	-	850
Filter Fabric	Sq. Yd.	-	-	-	850
Removal of Existing Structures	Each	-	-	-	1
Structure Excavation	Cu. Yd.	-	-	77	77
Concrete Structures	Cu. Yd.	-	18.4	22.5	40.9
Concrete Encasement	Cu. Yd.	-	31.8	3.5	35.3
Precast Prestressed Concrete Deck Beams (17" Depth)	Sq. Ft.	3338	-	-	3338
Reinforcement Bars, Epoxy Coated	Pound	-	1960	3070	5030
Steel Railing, Type S1	Foot	223	-	-	223
Furnishing Steel Piles HP 12x53	Foot	-	408	216	624
Driving Piles	Foot	-	-	216	216
Test Pile Steel HP 12x53	Each	-	-	2	2
Pile Shoes	Each	-	-	10	10
Name Plates	Each	-	-	-	1
Setting Piles in Rock	Each	-	12	-	12



**SECTION A-A**

**INDEX OF SHEETS**

1. General Plan & Elevation
- 2.-3. PPC Deck Beam Superstructure
- 4.-5. 17"x36" PPC Deck Beam
6. 17"x36" PPC Deck Beam Details
7. Steel Railing, Type S-1
8. Abutments
9. Piers
10. HP Pile Details
- 11.-12. Soil Borings

**GENERAL PLAN AND ELEVATION**

**FILLMORE TR. (C.H.#8)  
OVER E. FORK OF SHOAL CREEK  
F.A.S. ROUTE 721 SECTION 08-00128-00 BR  
MONTGOMERY COUNTY  
STATION 141+63.00  
STRUCTURE NO. 068-3358**

**WATERWAY INFORMATION**

Drainage Area=55.5 SQ. MI. Low Grade Elev.=592.50 @ Sta. 141+63 Max. Rec. H.W.E.=Unknown							
Flood	Freq. Yr.	Q C.F.S.	Opening Sq. Ft.	Nat. H.W.E.	Head - Ft.	Headwater El.	
Design	20	5100	959	588.3	0.7	0.6	589.0 588.9
Base	100	7050	999	589.2	1.5	1.0	590.7 590.2
Overtopping (Prop.)	500(+)	SEE 0500					
Max. Calc.	500	9040	1004	589.9	2.4	1.5	592.3 591.4

Construction Permits: The requirements of the IDNR - Office of Water Resources have been fulfilled in accordance with Statewide Permit No. 2.

**DESIGN SCOUR ELEVATION TABLE**

N. ABUTMENT	S. ABUTMENT	PIER 1	PIER 2
585.30	585.30	570.54	570.54

**DESIGN SPECIFICATIONS**

2007 AASHTO LRFD Bridge Design Specifications

**LOADING HL-93**

Allow 50#/sq. ft. for future wearing surface.

**SEISMIC DATA**

Seismic Performance Zone (S.P.Z.) = 2  
Design Spectral Acceleration at 1 second ( $S_{D1}$ ) = 0.205  
Design Spectral Acceleration at 0.2 second ( $S_{D5}$ ) = 0.449  
Soil Site Class (S) = D

**DESIGN STRESSES**

**FIELD UNITS**

$f'_c$  = 3,500 psi  
 $f_y$  = 60,000 psi (Reinforcement)

**PRECAST UNITS**

$f'_c$  = 6,000 psi  
 $f'_{ci}$  = 5,000 psi  
 $f'_s$  = 270,000 psi (1/2"  $\phi$  low lax. strands)  
 $f'_{si}$  = 201,960 psi (1/2"  $\phi$  low lax. strands)

EAST FORK OF SHOAL CREEK  
BUILT 20 BY  
MONTGOMERY COUNTY HIGHWAY DEPT.  
MONTGOMERY COUNTY  
SEC. 08-00128-00-BR  
F.A.S. ROUTE 721 STA. 141+63.00  
STR. NO. 068-3358 LOADING HL-93

**NAME PLATE**

Locate Name Plate at Northwest Corner of Bridge (See Std 515001)

DESIGNED CMF
CHECKED TMM
DRAWN RNH
CHECKED TMM



Signature: *Brandon M. Charyl* Date: 7-29-09

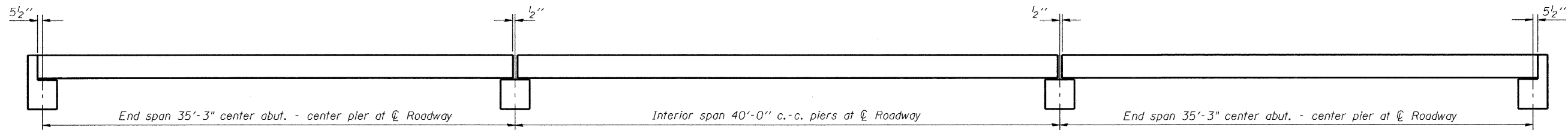


McDonough-Whitlow, P.C.  
Consulting Engineers & Land Surveyors  
138 East Wood Street  
Hillsboro, IL 62049  
Phone: 217.532.9233  
Fax: 217.532.6300  
PROFESSIONAL DESIGN NO. 184-002754

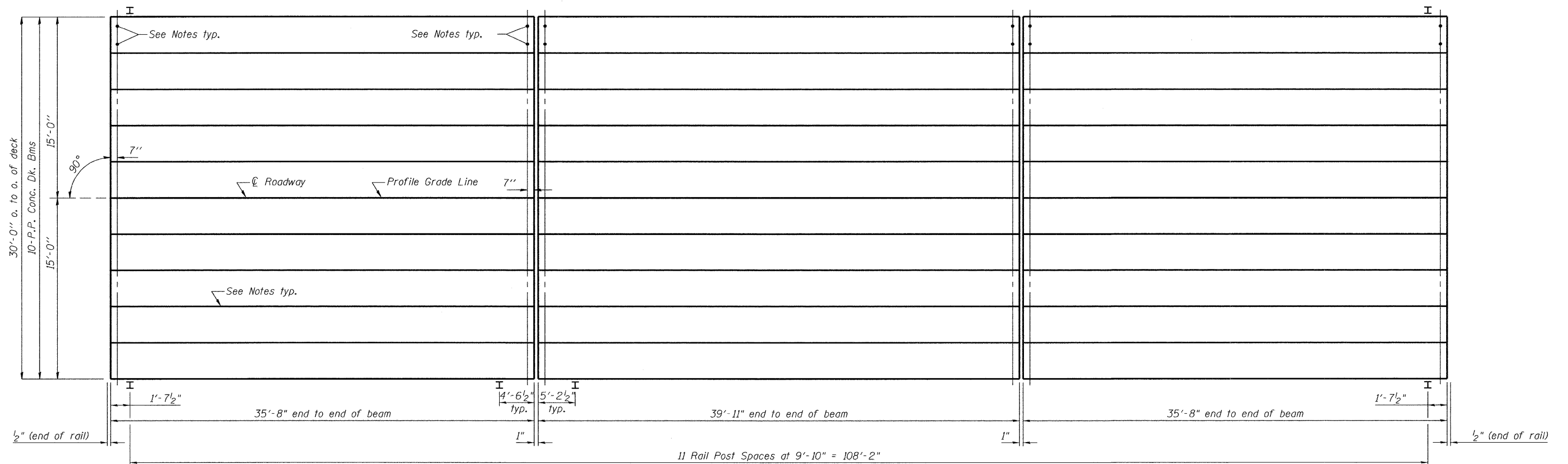
SHEET NO. 1  
12 SHEETS

F.A.S. RTE.	SECTION	COUNTY	TOTAL SHEETS	SHEET NO.
721	08-00128-00 BR	MONTGOMERY	22	7
CONTRACT NO. 93496				
FED. ROAD DIST. NO. ILLINOIS FED. AID PROJECT				

STATE OF ILLINOIS  
DEPARTMENT OF TRANSPORTATION



**ELEVATION**



**PLAN**

Notes:  
After beams have been erected, holes shall be drilled into substructure and anchor dowels placed. Dowel holes shall be filled with non-shrink grout to top of beam and allowed to cure min. 24 hrs. prior to grouting the shear keys.  
Nominal 1" joint at  $\mathcal{C}$  Pier shall be filled with non-shrink grout.  
Longitudinal keys shall be grouted.  
See sheet 6 of 12 for P.P.C. Deck Beam Bill of Material and sheet 7 of 12 for Steel Railing, Type S1 Bill of Material.

DESIGNED	CMF
CHECKED	TMM
DRAWN	RNH
CHECKED	TMM

**PPC DECK BEAM SUPERSTRUCTURE  
STRUCTURE NO. 068-3358**



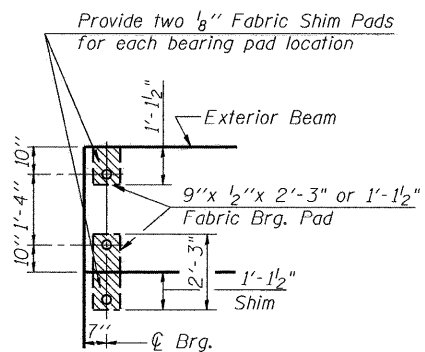
McDonough-Whitlow, P.C.  
Consulting Engineers & Land Surveyors  
138 East Wood Street  
Hillsboro, IL 62049  
Phone: 217.532.9233  
Fax: 217.532.6300  
PROFESSIONAL DESIGN No. 184-002754

SHEET NO. 2  
12 SHEETS

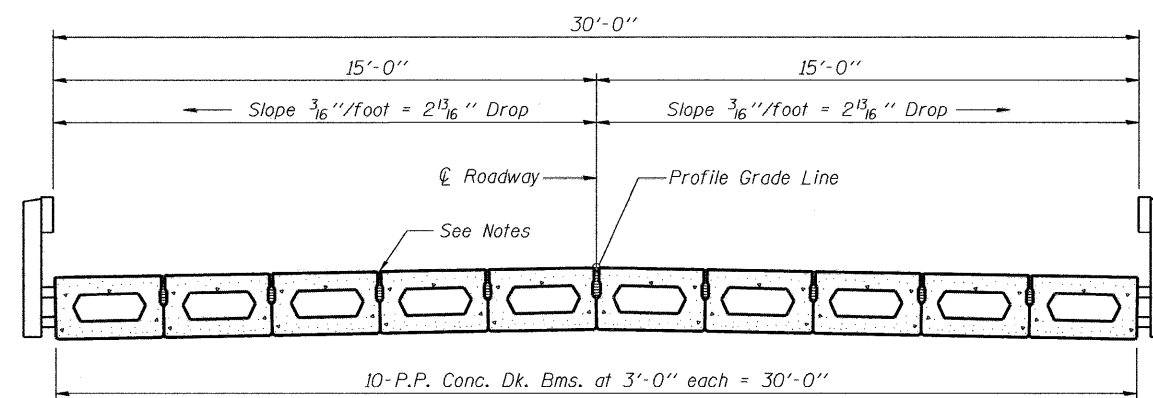
F.A.S. RTE.	SECTION	COUNTY	TOTAL SHEETS	SHEET NO.
721	08-00128-00 BR	MONTGOMERY	22	8
CONTRACT NO. 93496				
FED. ROAD DIST. NO. _ ILLINOIS FED. AID PROJECT				



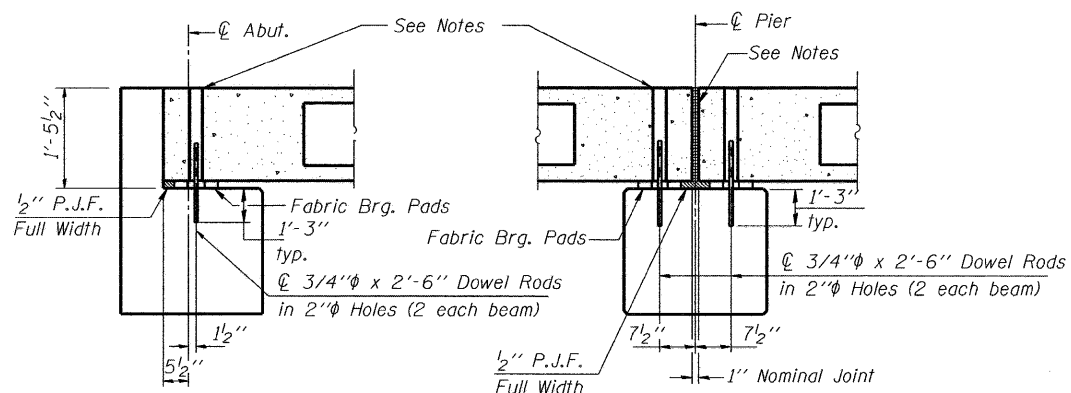
STATE OF ILLINOIS  
DEPARTMENT OF TRANSPORTATION



**1/2" FABRIC BRG. PAD DETAILS**



**CROSS SECTION**



**SECTION AT ABUTS.**  
(Along  $\phi$  Beams)

**SECTION AT PIERS**  
(Along  $\phi$  Beams)

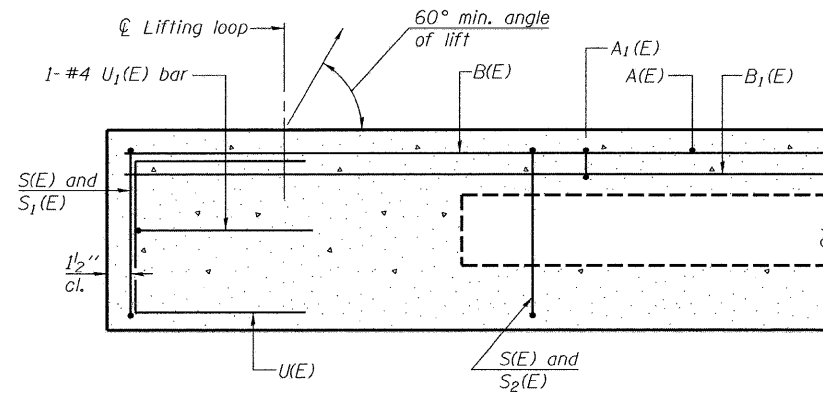
Notes:  
After beams have been erected, holes shall be drilled into substructure and anchor dowels placed. Dowel holes shall be filled with non-shrink grout to top of beam and allowed to cure min. 24 hrs. prior to grouting the shear keys.  
Nominal 1" joint at  $\phi$  Pier shall be filled with non-shrink grout.  
Longitudinal keys shall be grouted.  
See sheet 6 of 12 for P.P.C. Deck Beam Bill of Material and sheet 7 of 12 for Steel Railing, Type S1 Bill of Material.

**PPC DECK BEAM SUPERSTRUCTURE**  
**STRUCTURE NO. 068-3358**

DESIGNED CMF
CHECKED TMM
DRAWN RNH
CHECKED TMM

<p>McDonough-Whitlow, P.C. Consulting Engineers &amp; Land Surveyors 138 East Wood Street Hillsboro, IL 62049 Phone: 217.532.9233 Fax: 217.532.6300 PROFESSIONAL DESIGN No. 184-002754</p>	SHEET NO. 3  12 SHEETS	F.A.S. RTE.	SECTION	COUNTY	TOTAL SHEETS	SHEET NO.
		721	08-00128-00 BR	MONTGOMERY	22	9
		CONTRACT NO. 93496				
FED. ROAD DIST. NO. _ ILLINOIS FED. AID PROJECT						

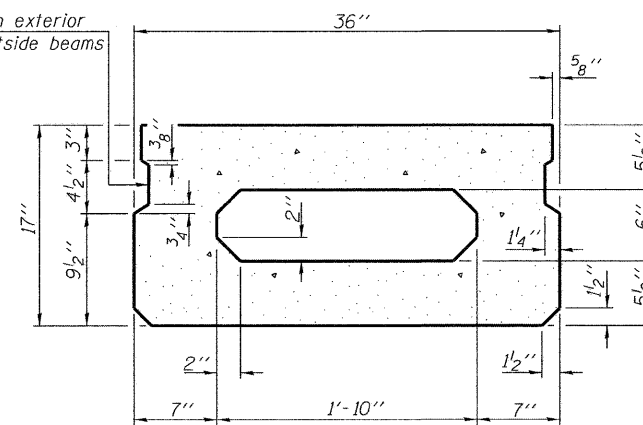
STATE OF ILLINOIS  
DEPARTMENT OF TRANSPORTATION



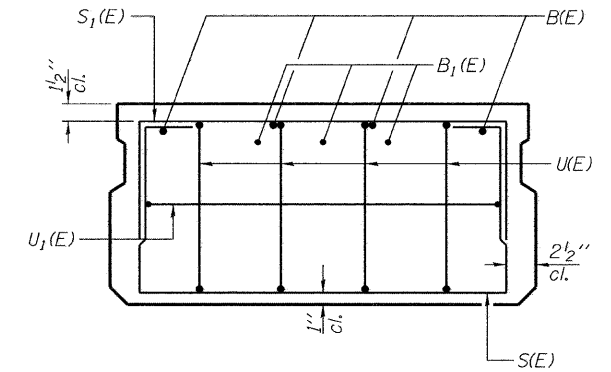
SECTION C-C

\*Omit key on exterior face of outside beams

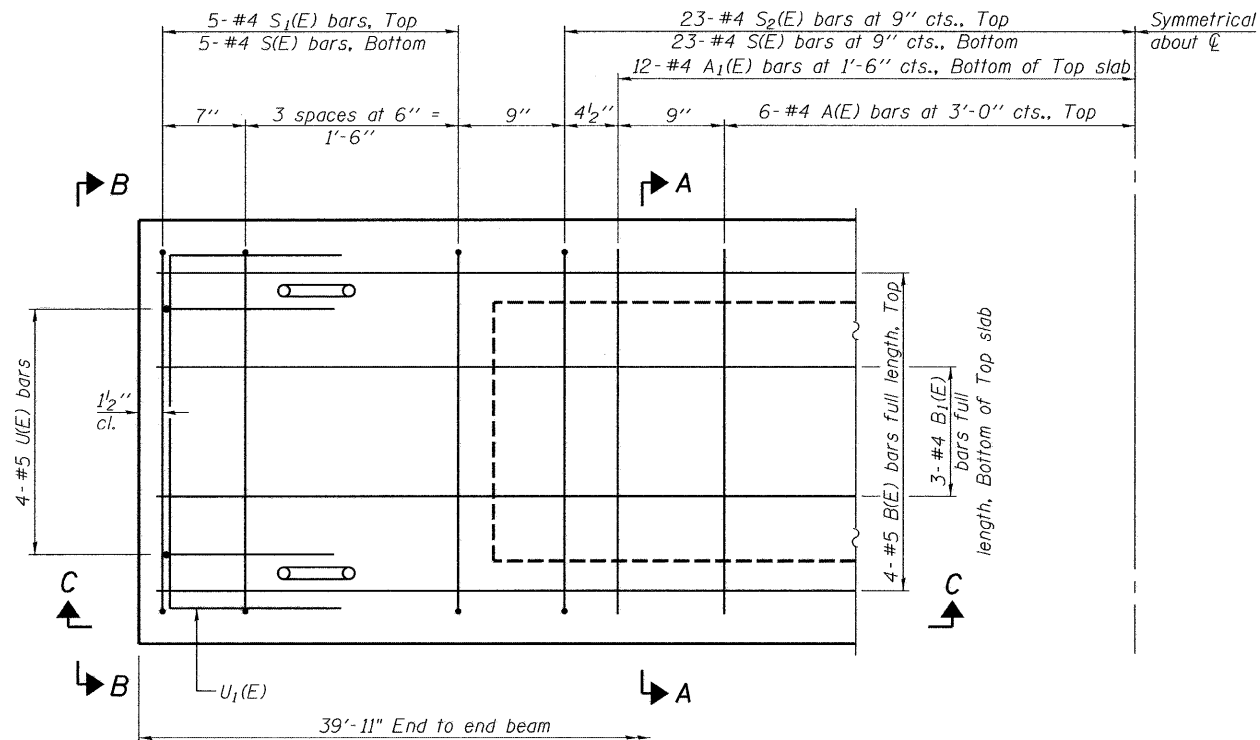
\*Rail post anchor devices (specified elsewhere) to be cast into exterior face of outside beams.



SECTION A-A  
(Showing dimensions)

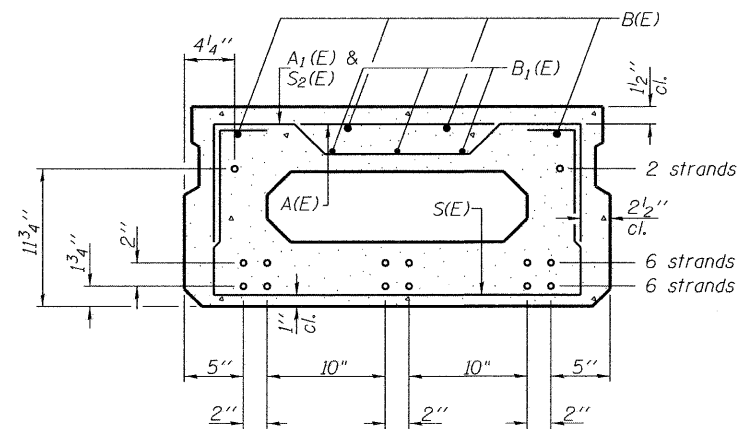


VIEW B-B



PLAN VIEW

Note: Spacing of S(E) and S2(E) bars may be adjusted up to 4" in the immediate area of the transverse tie diaphragms to miss the block outs for the transverse ties.



SECTION A-A  
(Showing reinforcement and permissible strand locations)

Note: Place the number of strands specified in each row symmetrically about the centerline of beam in the permissible strand locations shown.

BAR LIST  
ONE BEAM ONLY

(For information only)

Bar	No.	Size	Length	Shape
A(E)	12	#4	2'-7"	—
A1(E)	24	#4	2'-10"	~
B(E)	4	#5	39'-8"	—
B1(E)	3	#4	39'-8"	—
S(E)	56	#4	5'-9"	□
S1(E)	10	#4	4'-3"	□
S2(E)	46	#4	4'-6"	□
U(E)	8	#5	3'-8"	□
U1(E)	2	#4	5'-0"	□

Note: See sheet 6 of 12 for additional details and Bill of Material.

17"x36" PPC DECK BEAM  
STRUCTURE NO. 068-3358  
SPAN 2

DESIGNED CMF
CHECKED TMM
DRAWN RNH
CHECKED TMM

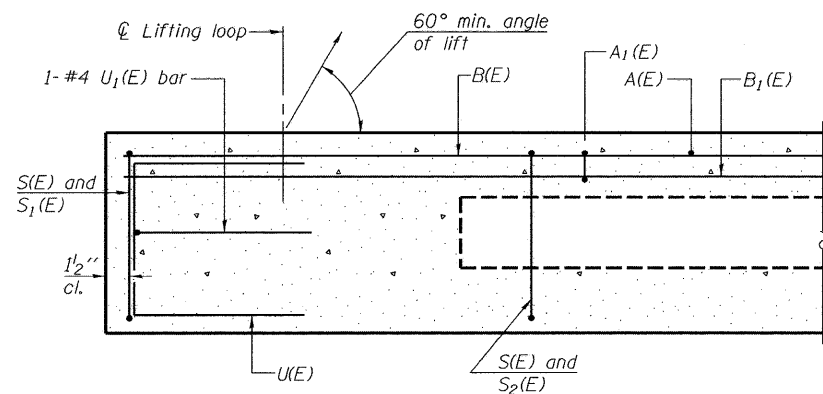
PD-1736-0 10-1-08

McDonough-Whitlow, P.C.  
Consulting Engineers & Land Surveyors  
138 East Wood Street  
Hillsboro, IL 62049  
Phone: 217.532.9233  
Fax: 217.532.6300  
PROFESSIONAL DESIGN No. 184-002754

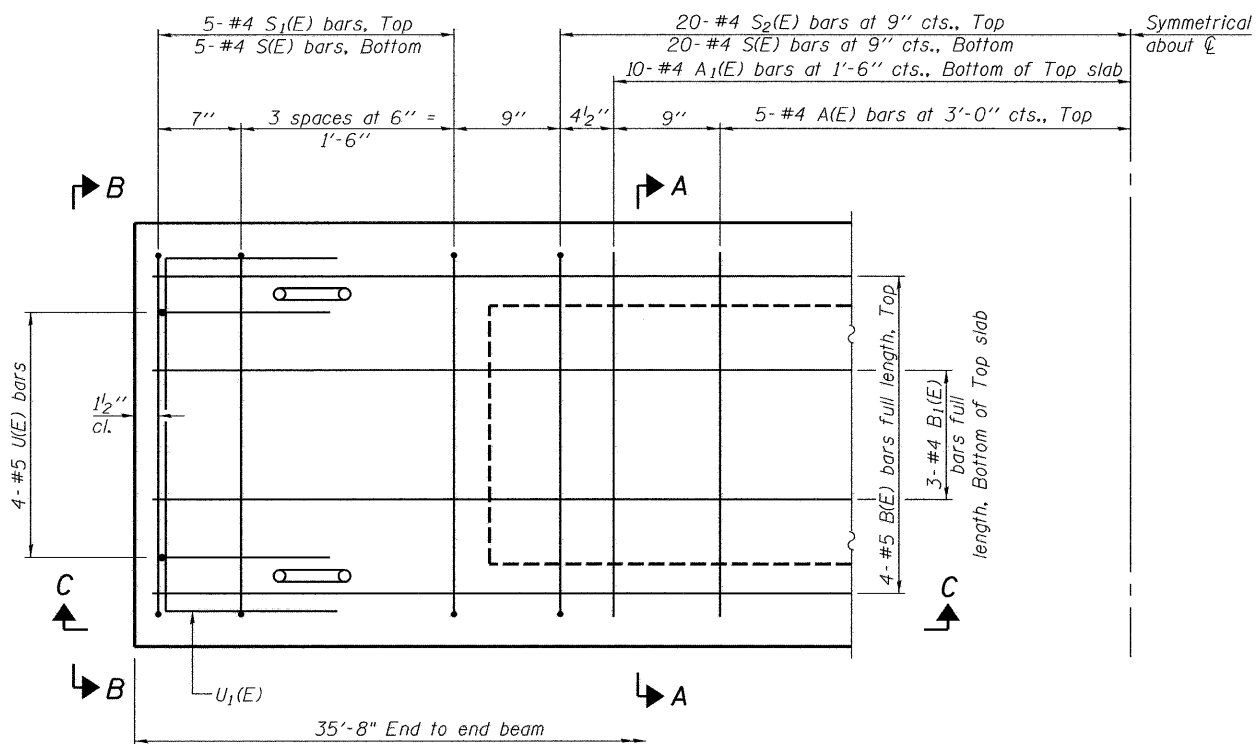
SHEET NO. 4  
12 SHEETS

F.A.S. RTE.	SECTION	COUNTY	TOTAL SHEETS	SHEET NO.
721	08-00128-00 BR	MONTGOMERY	22	10
CONTRACT NO. 93496				
FED. ROAD DIST. NO. ILLINOIS FED. AID PROJECT				

STATE OF ILLINOIS  
DEPARTMENT OF TRANSPORTATION



SECTION C-C



PLAN VIEW

Note: Spacing of S(E) and S2(E) bars may be adjusted up to 4" in the immediate area of the transverse tie diaphragms to miss the block outs for the transverse ties.

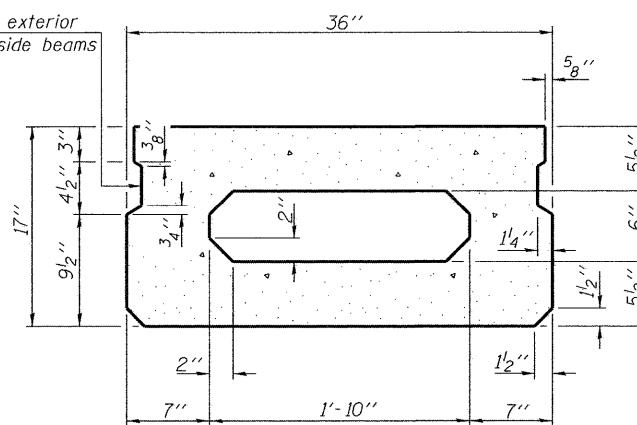
DESIGNED	CMF
CHECKED	TMM
DRAWN	RNH
CHECKED	TMM

PD-1736-0

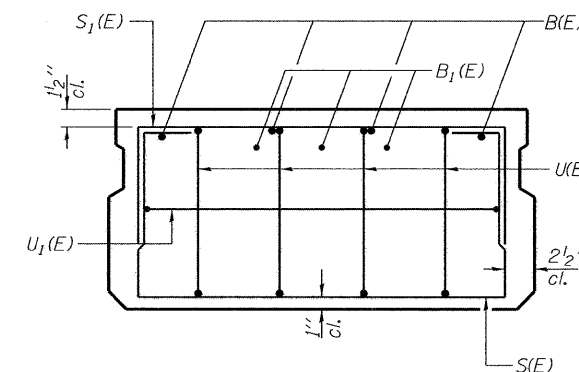
10-1-08

\* Rail post anchor devices (specified elsewhere) to be cast into exterior face of outside beams.

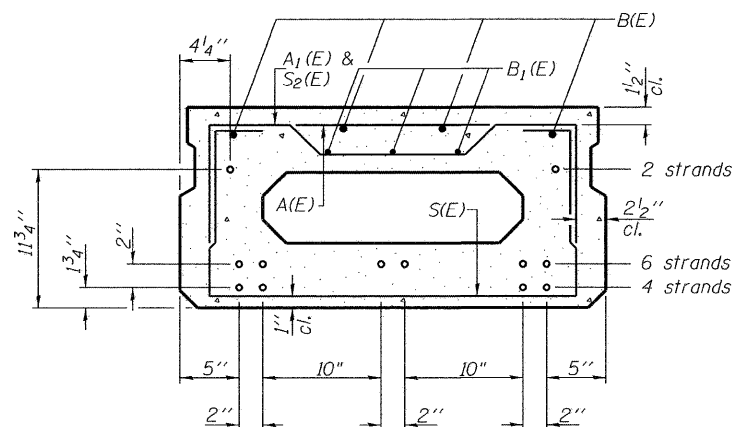
\* Omit key on exterior face of outside beams



SECTION A-A  
(Showing dimensions)



VIEW B-B



SECTION A-A

(Showing reinforcement and permissible strand locations)

Note: Place the number of strands specified in each row symmetrically about the centerline of beam in the permissible strand locations shown.

BAR LIST  
ONE BEAM ONLY

(For information only)

Bar	No.	Size	Length	Shape
A(E)	10	#4	2'-7"	—
A1(E)	20	#4	2'-10"	~
B(E)	4	#5	35'-5"	—
B1(E)	3	#4	35'-5"	—
S(E)	50	#4	5'-9"	U
S1(E)	10	#4	4'-3"	U
S2(E)	40	#4	4'-6"	U
U(E)	8	#5	3'-8"	C
U1(E)	2	#4	5'-0"	U

Note: See sheet 6 of 12 for additional details and Bill of Material.

17"x36" PPC DECK BEAM  
STRUCTURE NO. 068-3358  
SPANS 1 & 3

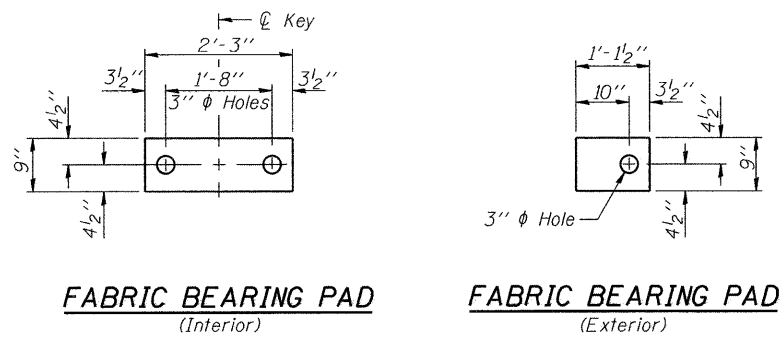


McDonough-Whitlow, P.C.  
Consulting Engineers & Land Surveyors  
138 East Wood Street  
Hillsboro, IL 62049  
Phone: 217.532.9233  
Fax: 217.532.6300  
PROFESSIONAL DESIGN No. 184-002754

SHEET NO. 5  
12 SHEETS

F.A.S. RTE.	SECTION	COUNTY	TOTAL SHEETS	SHEET NO.
721	08-00128-00 BR	MONTGOMERY	22	11
CONTRACT NO. 93496				
FED. ROAD DIST. NO. ILLINOIS FED. AID PROJECT				

STATE OF ILLINOIS  
DEPARTMENT OF TRANSPORTATION

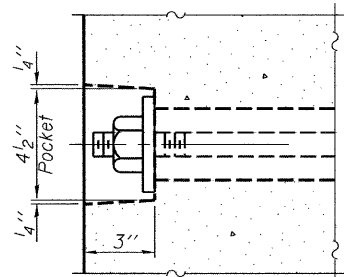


**FABRIC BEARING PAD**  
(Interior)

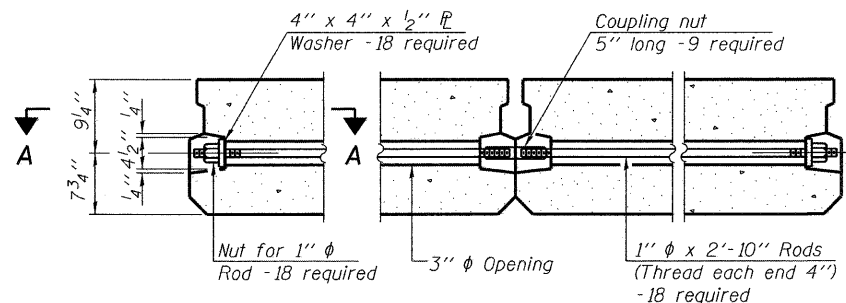
**FABRIC BEARING PAD**  
(Exterior)

**FIXED**

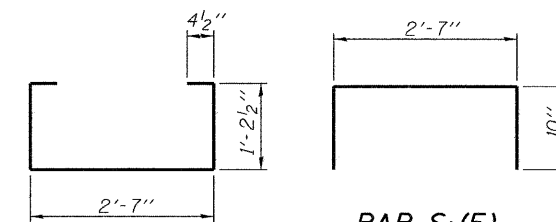
Note: Omit holes when using expansion bearings.



**SECTION A-A**

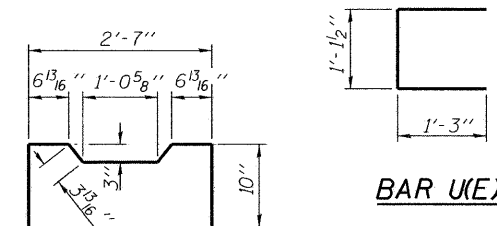


**TYPICAL TRANSVERSE TIE ASSEMBLY**



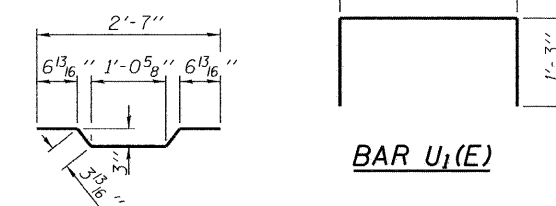
**BAR S(E)**

**BAR S<sub>1</sub>(E)**



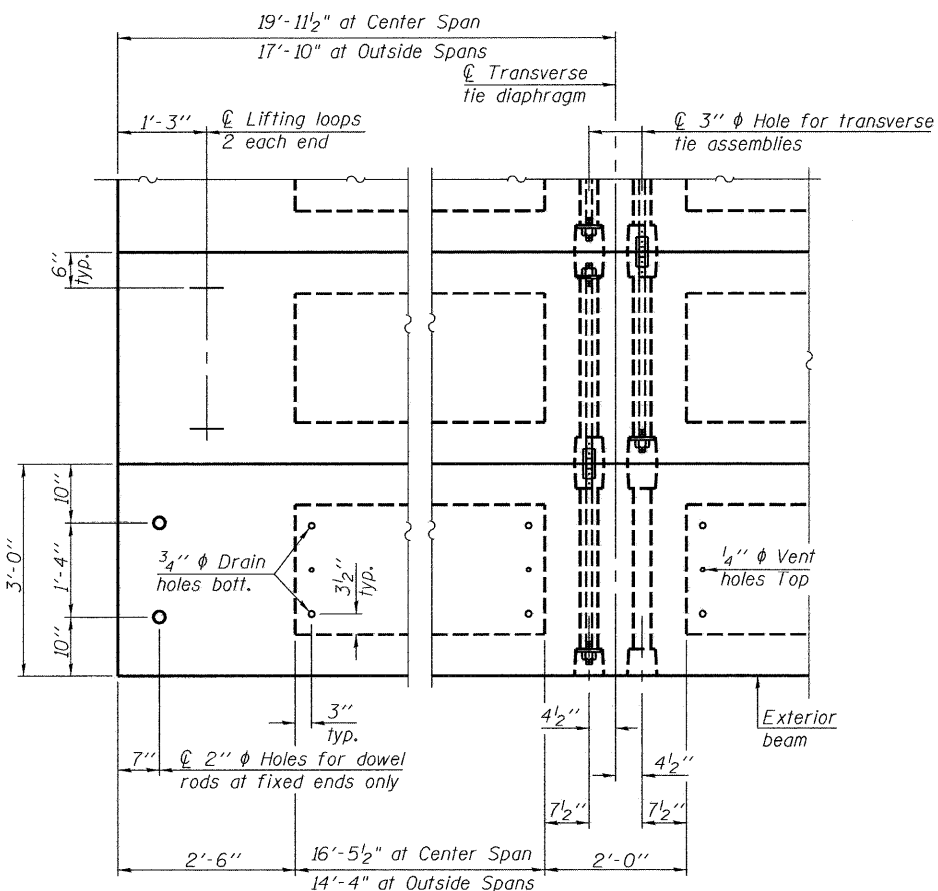
**BAR U(E)**

**BAR S<sub>2</sub>(E)**



**BAR U<sub>1</sub>(E)**

**BAR A<sub>1</sub>(E)**

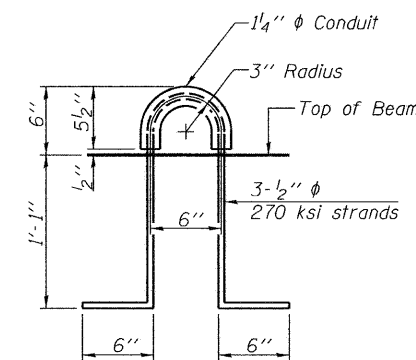


**PLAN VIEW**

Note: Connect beams in pairs with the transverse tie configuration shown.

**Notes:**

- Prestressing steel shall be uncoated high strength, low relaxation 7-wire strand, Grade 270. The nominal diameter shall be 1/2" and the nominal cross-sectional area shall be 0.153 sq. in.
- The 1" rods in the transverse tie assembly shall be tightened to a snug fit and the threads set. Pockets on exterior faces of bridge shall be filled with grout after transverse tie assembly is in place.
- Reinforcement bars shall conform to ASTM A 706, Grade 60. (See Special Provisions).
- Two 1/8" fabric adjusting shims of the dimensions of the exterior bearing pad shall be provided for each bearing pad location.
- A minimum 2 1/2" diameter lifting pin shall be used to engage the lifting loops during handling.
- Corrosion Inhibitor, per Article 1020.05(b)(12) and 1021.06 of the Standard Specifications, shall be used in the concrete for precast prestressed concrete deck beams.
- Compressive strength of prestressed concrete, f'c, shall be 6000 psi.
- Compressive strength of prestressed concrete at release, f'ci, shall be 5000 psi.



**LIFTING LOOP DETAIL**

**BILL OF MATERIAL**

Precast Prestressed Conc. Deck Bms. (17" depth)	Sq. Ft.	3338
---	---------	------

**17"x36" PPC DECK BEAM DETAILS  
STRUCTURE NO. 068-3358**

DESIGNED	CMF
CHECKED	TMM
DRAWN	RNH
CHECKED	TMM

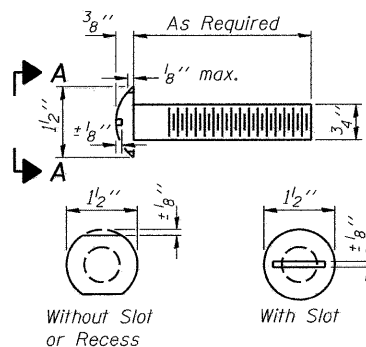
PD-1736-0D 10-1-08

**McDonough-Whitlow, P.C.**  
Consulting Engineers & Land Surveyors  
138 East Wood Street  
Hillsboro, IL 62049  
Phone: 217.532.9233  
Fax: 217.532.6300  
PROFESSIONAL DESIGN No. 184-002754

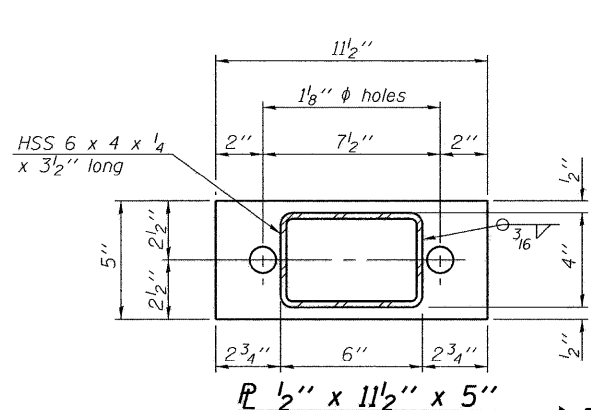
SHEET NO. 6  
12 SHEETS

F.A.S. RTE.	SECTION	COUNTY	TOTAL SHEETS	SHEET NO.
721	08-00128-00 BR	MONTGOMERY	22	12
CONTRACT NO. 93496-				
FED. ROAD DIST. NO. ILLINOIS FED. AID PROJECT				

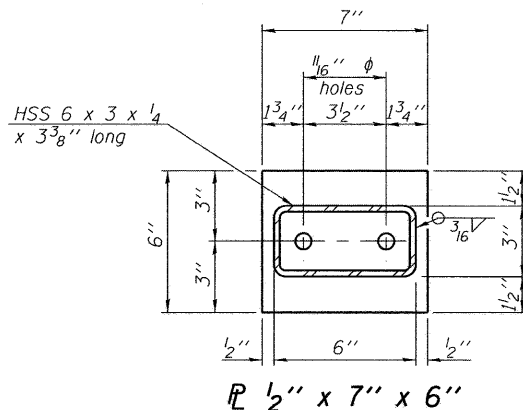
STATE OF ILLINOIS  
DEPARTMENT OF TRANSPORTATION



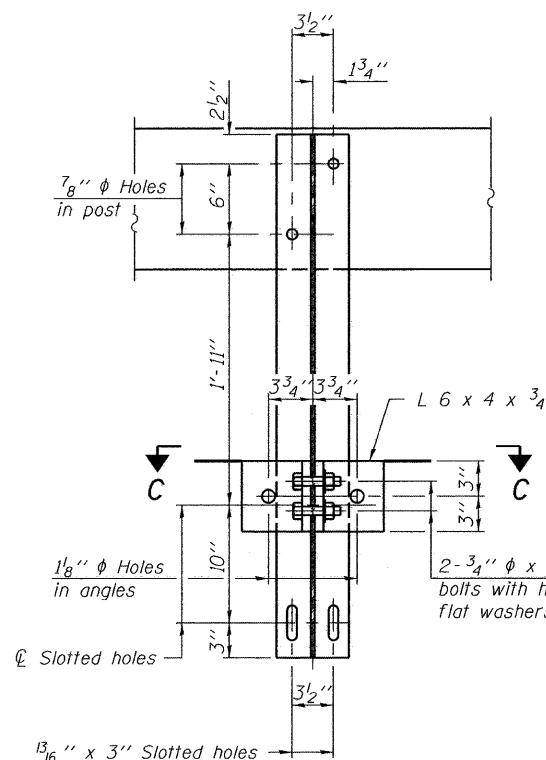
VIEW A-A  
ROUND HEAD BOLT



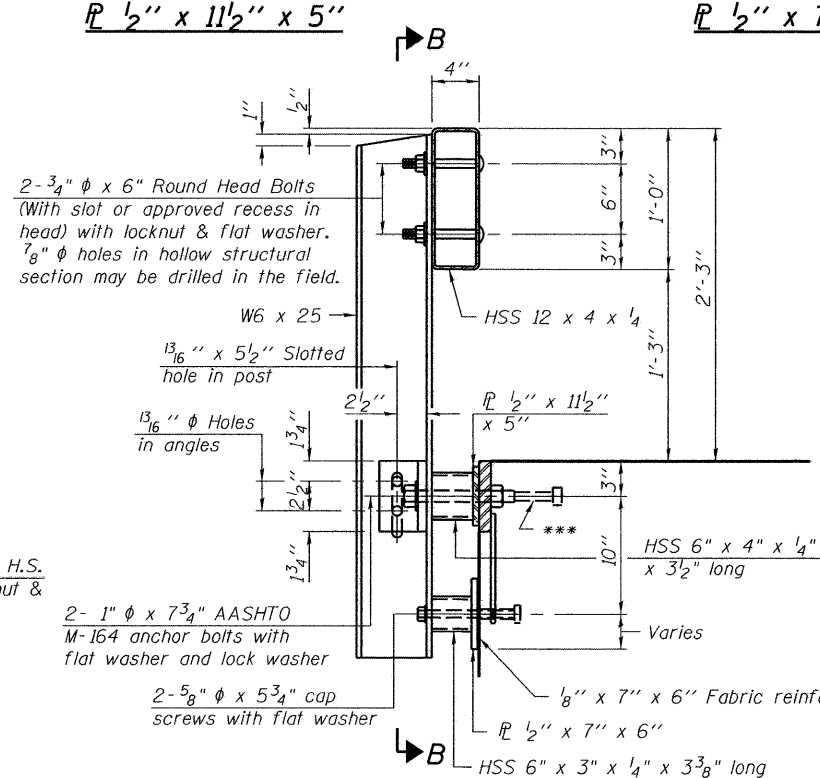
PL 1/2" x 11 1/2" x 5"



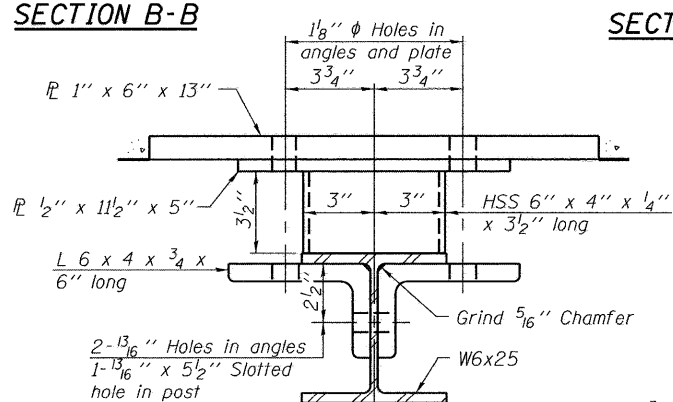
PL 1/2" x 7" x 6"



SECTION B-B

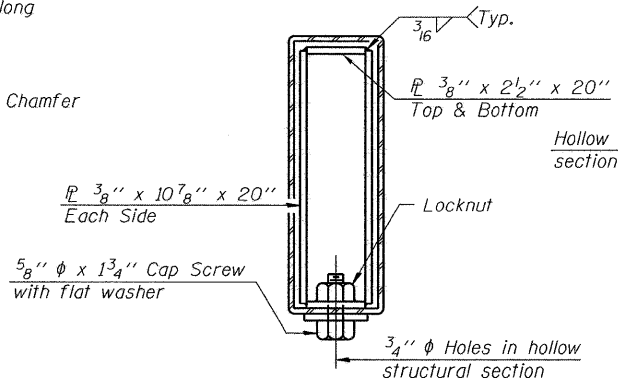


SECTION AT RAILING POST

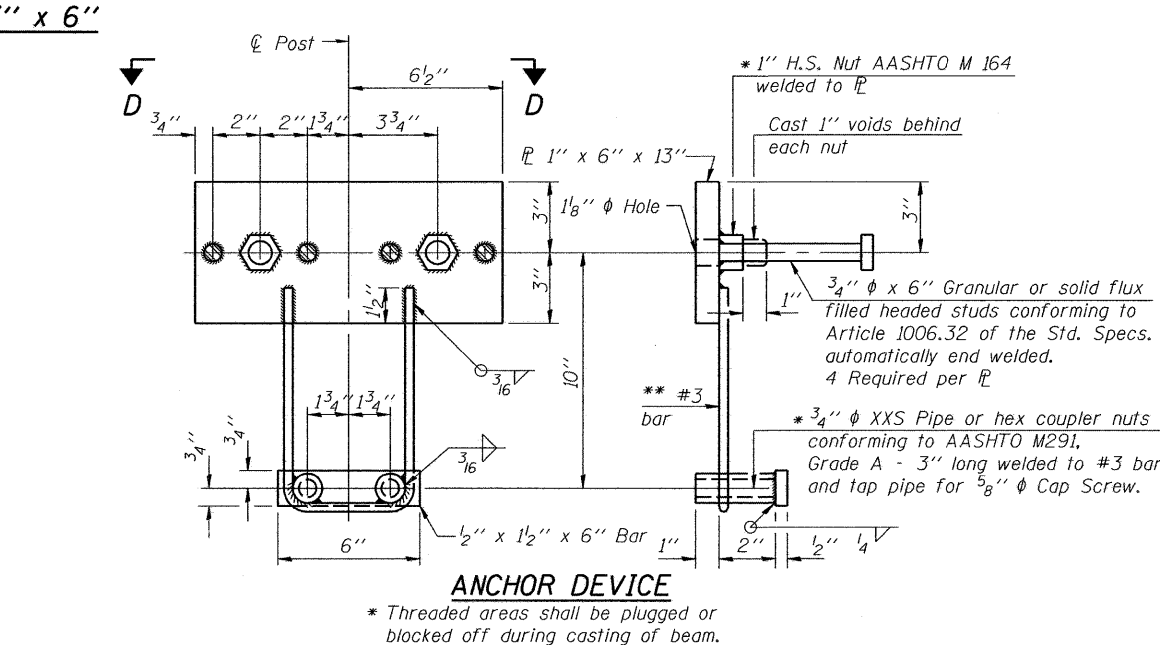


SECTION C-C

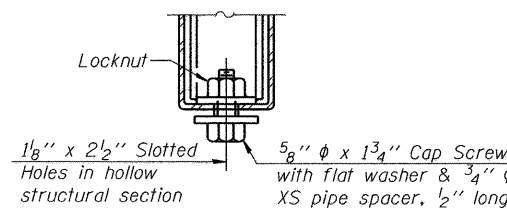
\*\* Whenever the lower insert assemblies interfere with strand locations, the #3 bars shall be cut and adjusted in order to allow raising or lowering of the lower inserts. Maximum adjustment not to exceed 1/2".



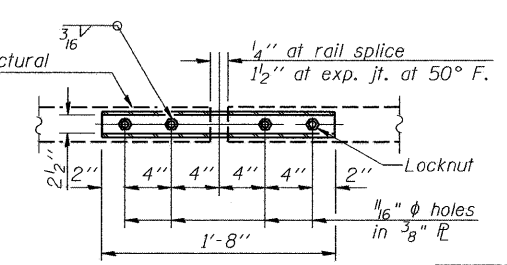
SECTIONS AT RAIL SPLICE



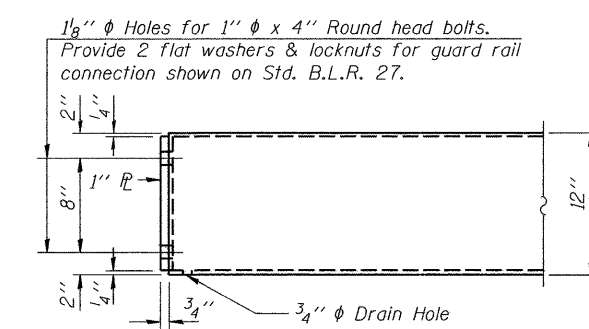
ANCHOR DEVICE



RAIL SPLICE CONNECTION  
AT EXPANSION JT.

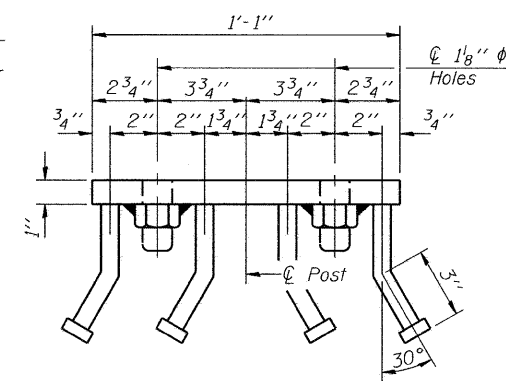


PLAN-BOTT. SPLICE  
TYPICAL



END OF RAIL DETAILS

Notes:  
All field drilled holes shall be coated with an approved zinc rich paint before erection.  
For multi-span bridges, sufficient 1/4 inch x 6 inch x 1'-2 inch galvanized steel shims shall be provided to align rail between adjacent spans. Cost included with Steel Railing, Type S-1.  
All steel rail elements shall be galvanized according to Article 509.05 of the Standard Specifications.  
\*\*\* The studs of the anchor devices shall be placed below the top reinforcement bars and the outermost longitudinal reinforcement bar shall be placed directly above the studs of the rail post anchor device.



VIEW D-D

BILL OF MATERIAL

Item	Unit	Quantity
Steel Railing, Type S1	Foot	223

STEEL RAILING, TYPE S-1  
STRUCTURE NO. 068-3358

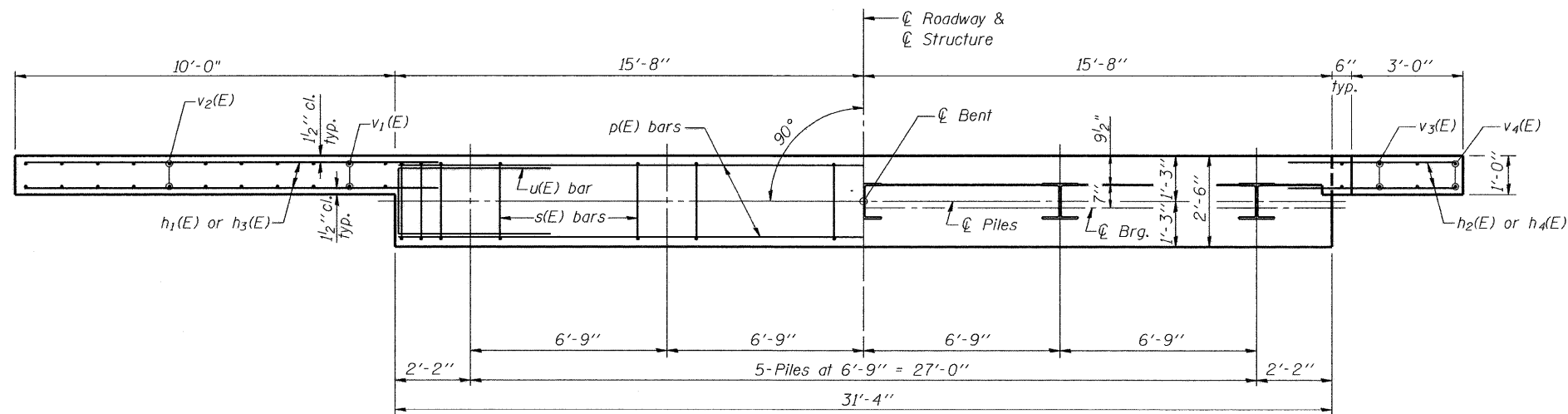
DESIGNED	CMF
CHECKED	TMM
DRAWN	RNH
CHECKED	TMM

(10'-9" Maximum Post Spacing)

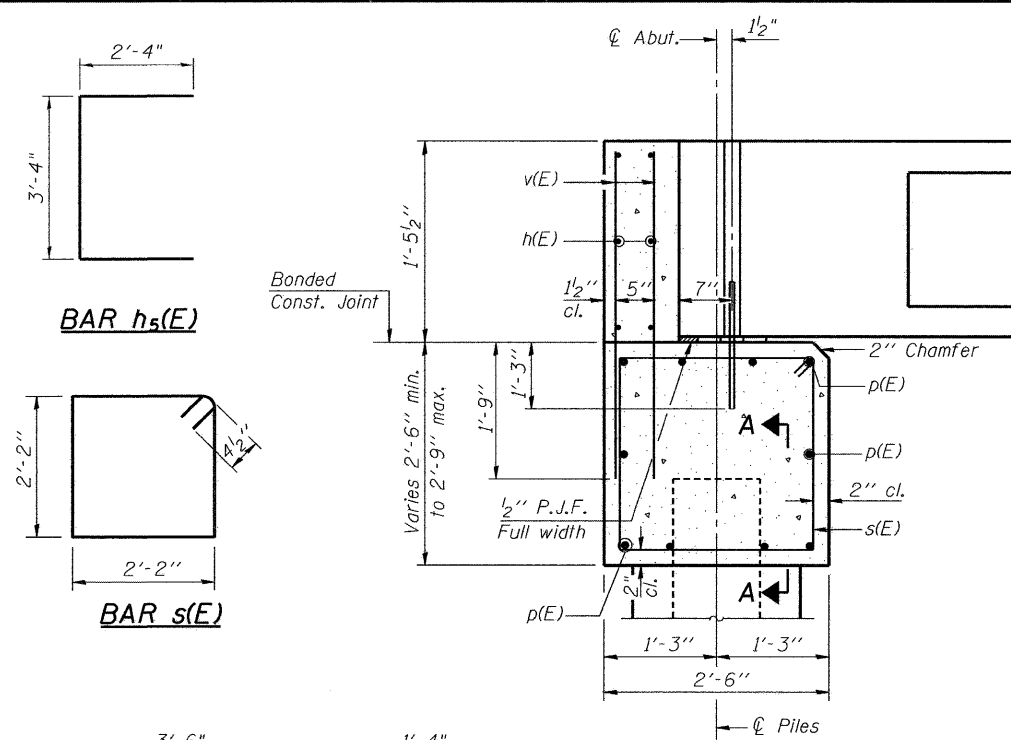
McDonough-Whitlow, P.C.  
Consulting Engineers & Land Surveyors  
138 East Wood Street  
Hillsboro, IL 62049  
Phone: 217.532.9233  
Fax: 217.532.6300  
PROFESSIONAL DESIGN NO. 184-002754

SHEET NO. 7 12 SHEETS	F.A.S. RTE.	SECTION	COUNTY	TOTAL SHEETS	SHEET NO.
	721	08-00128-00 BR	MONTGOMERY	22	13
CONTRACT NO. 93496					
FED. ROAD DIST. NO. ILLINOIS FED. AID PROJECT					

STATE OF ILLINOIS  
DEPARTMENT OF TRANSPORTATION



PLAN

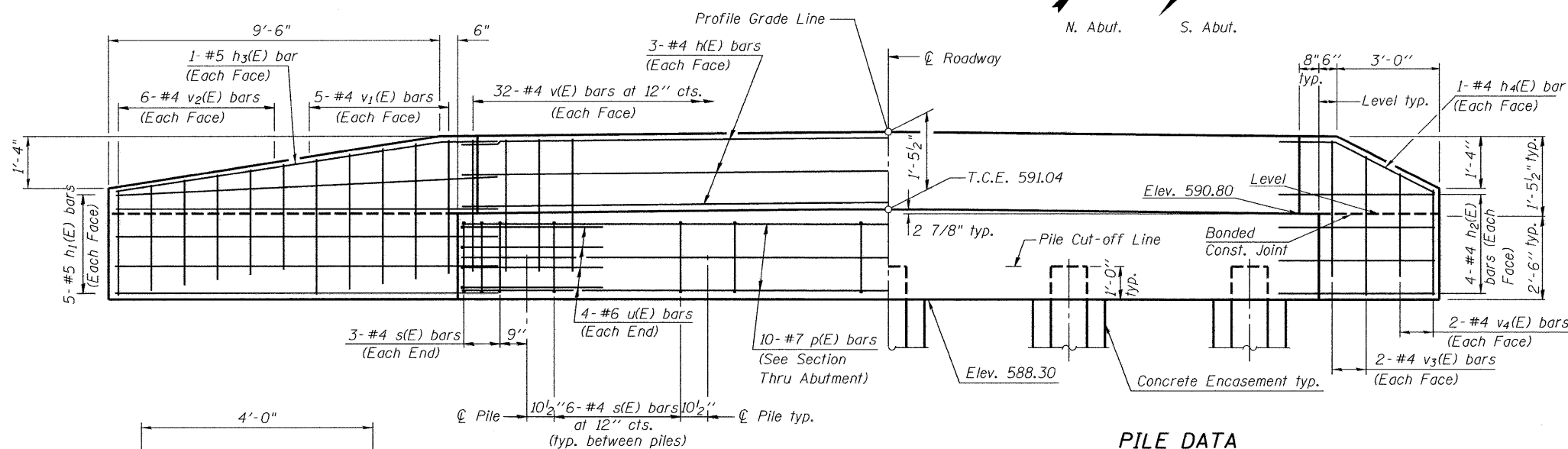


SECTION THRU ABUTMENT

BILL OF MATERIAL  
FOR TWO ABUTMENTS

Bar	No.	Size	Length	Shape
h(E)	12	#4	31'-0"	—
h1(E)	20	#5	11'-3"	—
h2(E)	16	#4	5'-0"	—
h3(E)	4	#5	11'-6"	—
h4(E)	4	#4	5'-3"	—
h5(E)	8	#4	8'-0"	—
p(E)	20	#7	31'-0"	—
s(E)	60	#4	9'-5"	—
s2(E)	40	#5	2'-0"	—
u(E)	16	#6	11'-1"	—
v(E)	128	#4	3'-1"	—
v1(E)	20	#4	3'-1"	—
v2(E)	24	#4	2'-4"	—
v3(E)	8	#4	3'-3"	—
v4(E)	8	#4	2'-4"	—
v5(E)	8	#4	6'-8"	—
v6(E)	8	#4	4'-6"	—
Concrete Structures		Cu. Yd.	22.5	
Reinforcement Bars, Epoxy Coated		Lb.	3070	
Furnishing Steel Piles HP 12x53		Foot	216	
Driving Piles HP 12x53		Foot	216	
Test Pile Steel HP 12x53		Each	2	
Pile Shoes		Each	10	
Concrete Encasement		Cu. Yd.	3.5	
Structure Excavation		Cu. Yd.	77	

ABUTMENTS  
STRUCTURE NO. 068-3358



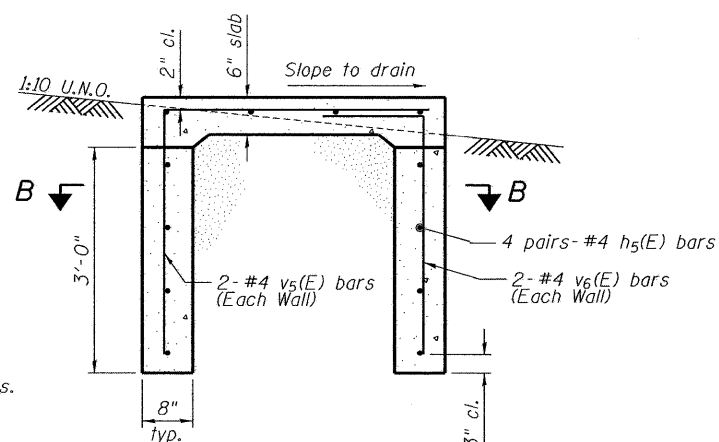
ELEVATION

PILE DATA

Steel HP 12x53 with pile shoes  
Nominal Required Bearing = 300 kips  
Factored Resistance Available = 150 kips  
Est. Length = 27 ft  
No. Required = 8  
No. of Test Piles = 2

Notes:

The Backwall and the portion of the Wingwalls above the bonded construction joint shall be cast against the in-place beam.  
Space reinforcement in cap to miss anchor rods. See sheet 9 of 12 for details of s2(E) bar.  
The Steel H-Piles shall be according to AASHTO M270 Grade 50.  
The test pile(s) shall be driven to 110 percent of the Nominal Required Bearing indicated on the pile data information.  
Drive one (1) test pile in a production location at each of the abutments.  
See sheet 3 of 12 for details at superstructure attachment.  
See sheet 9 of 12 for Section A-A.  
The cost of the concrete required for the gage station concrete pad is included in the Cost of Concrete Structures.



GAGE STATION  
CONCRETE PAD SECTION

Alternate v5(E) and v6(E) bars in each wall.

SECTION B-B

Alternate splices of h5(E) bars in adjacent walls.

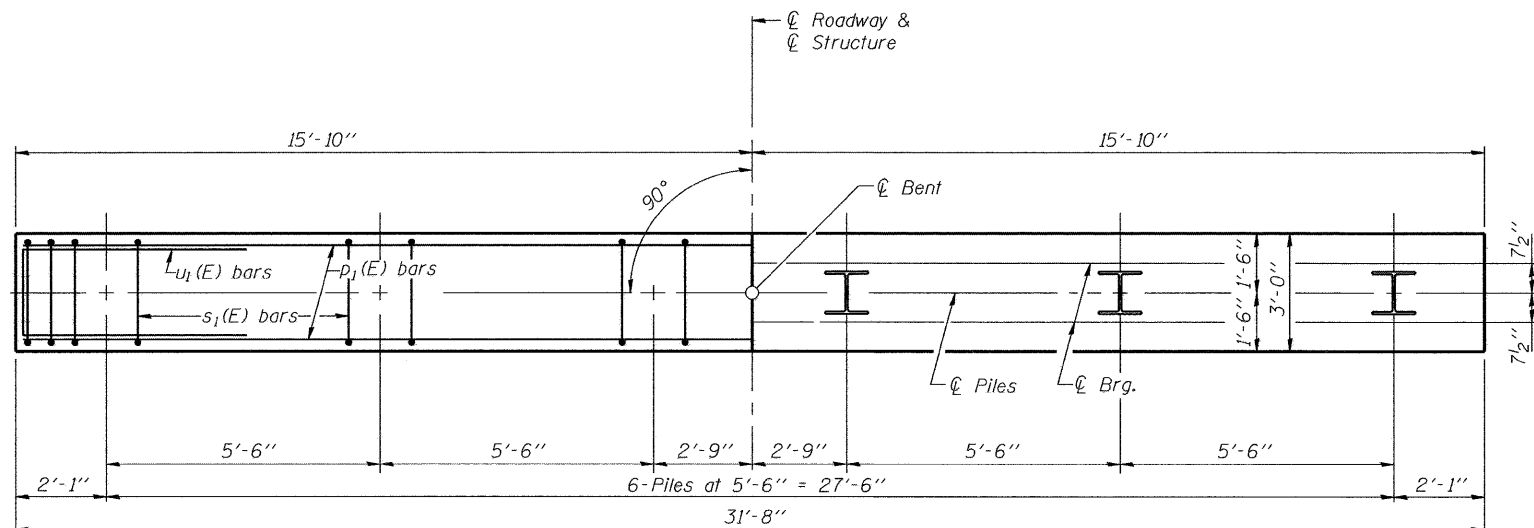
DESIGNED	CMF
CHECKED	TMM
DRAWN	RNH
CHECKED	TMM

**McDonough-Whitlow, P.C.**  
Consulting Engineers & Land Surveyors  
138 East Wood Street  
Hillsboro, IL 62049  
Phone: 217.532.9233  
Fax: 217.532.6300  
PROFESSIONAL DESIGN No. 184-002754

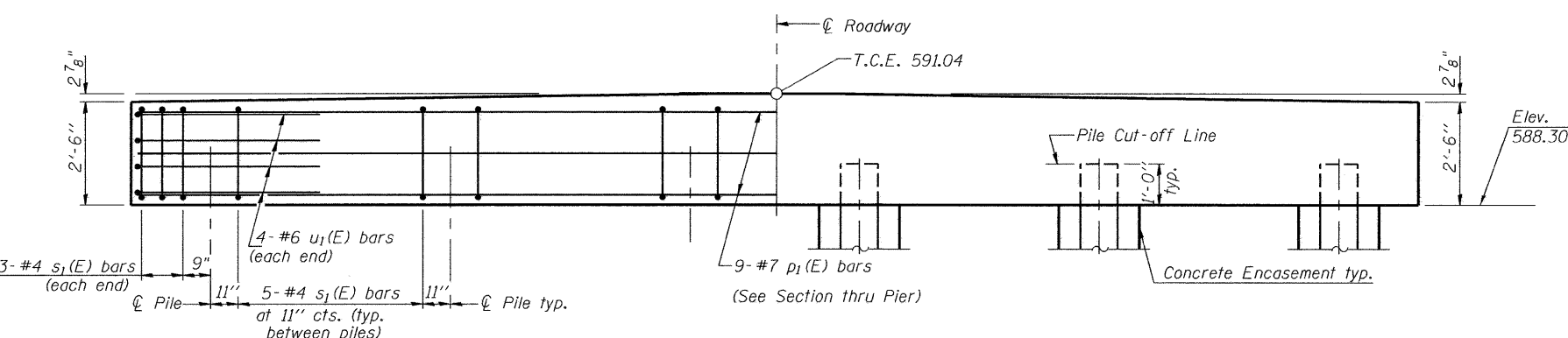
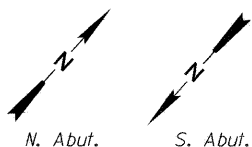
SHEET NO. 8  
12 SHEETS

F.A.S. RTE.	SECTION	COUNTY	TOTAL SHEETS	SHEET NO.
721	08-00128-00 BR	MONTGOMERY	22	14
CONTRACT NO. 93496				
FED. ROAD DIST. NO. ILLINOIS FED. AID PROJECT				

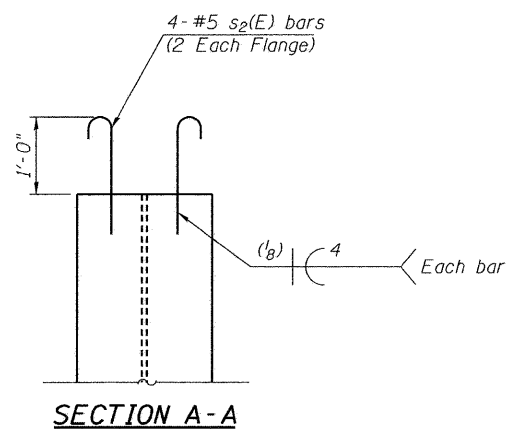
STATE OF ILLINOIS  
DEPARTMENT OF TRANSPORTATION



PLAN



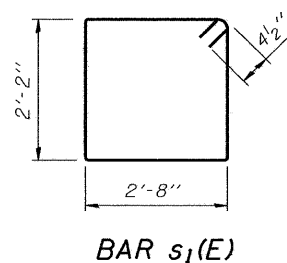
ELEVATION



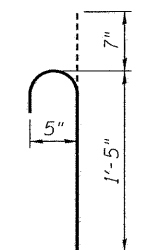
SECTION A-A

PILE DATA

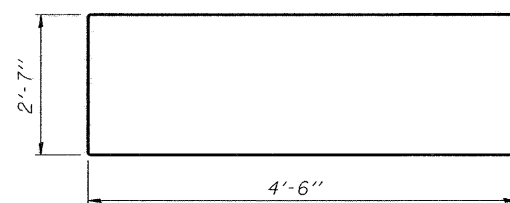
Steel HP 12x53  
Nominal Required Bearing = 361 kips  
Factored Resistance Available = 180 kips  
Est. Length = 34 ft  
No. Required = 12



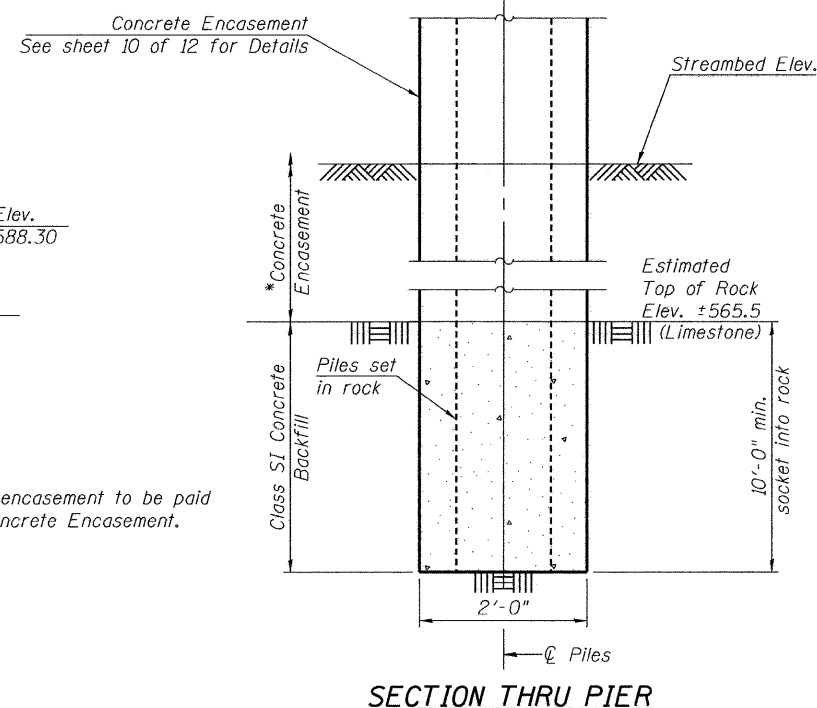
BAR s<sub>1</sub>(E)



BAR s<sub>2</sub>(E)



BAR u<sub>1</sub>(E)



SECTION THRU PIER

BILL OF MATERIAL  
FOR TWO PIERS

Bar	No.	Size	Length	Shape
p <sub>1</sub> (E)	18	#7	31'-4"	—
s <sub>1</sub> (E)	62	#4	10'-5"	□
s <sub>2</sub> (E)	48	#5	2'-0"	U
u <sub>1</sub> (E)	16	#6	11'-7"	—
Concrete Structures		Cu. Yd.	18.4	
Reinforcement Bars, Epoxy Coated		Lb.	1960	
Furnishing Steel Piles HP 12x53		Foot	408	
Concrete Encasement		Cu. Yd.	31.8	
Setting Piles in Rock		Each	12	

Notes:  
The Steel H-Piles shall be according to AASHTO M270 Grade 50.  
See sheet 3 of 12 for details at superstructure attachment.

PIERS  
STRUCTURE NO. 068-3358

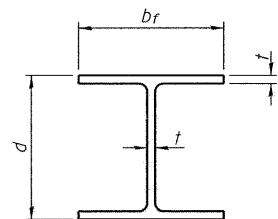
DESIGNED CMF
CHECKED TMM
DRAWN RNH
CHECKED TMM

McDonough-Whitlow, P.C.  
Consulting Engineers & Land Surveyors  
138 East Wood Street  
Hillsboro, IL 62049  
Phone: 217.532.9233  
Fax: 217.532.6300  
PROFESSIONAL DESIGN No. 184-002754

SHEET NO. 9  
12 SHEETS

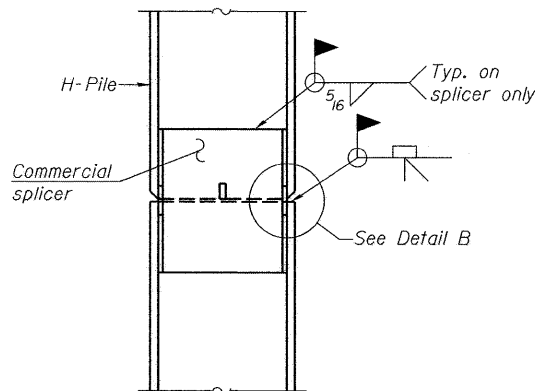
F.A.S. RTE.	SECTION	COUNTY	TOTAL SHEETS	SHEET NO.
721	08-00128-00 BR	MONTGOMERY	22	15
CONTRACT NO. 93496				
FED. ROAD DIST. NO. ILLINOIS FED. AID PROJECT				

STATE OF ILLINOIS  
DEPARTMENT OF TRANSPORTATION

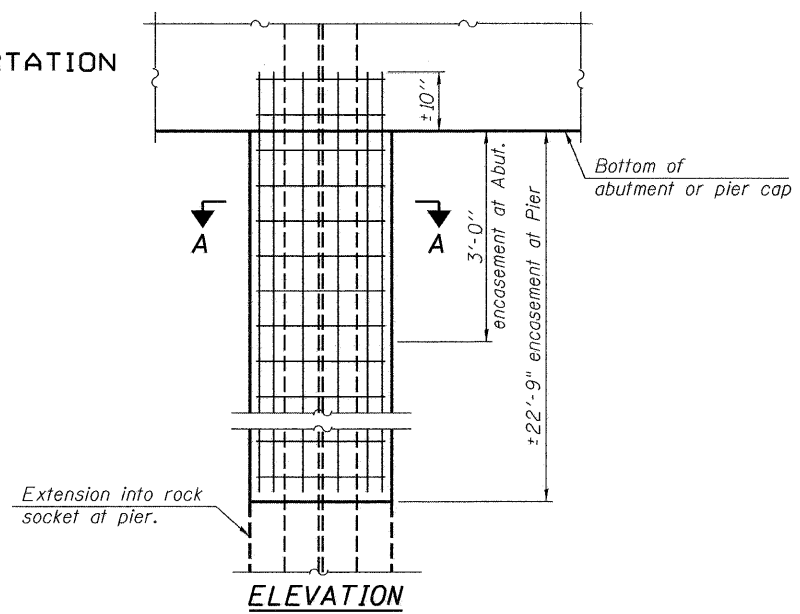


STEEL PILE TABLE

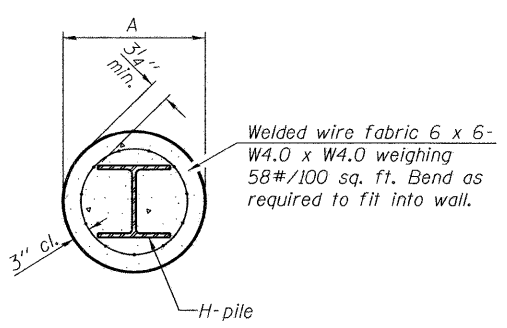
Designation	Depth d	Flange width br	Web and Flange thickness t	Encasement diameter A
HP 14x117	14 1/4"	14 7/8"	13/16"	30"
x102	14"	14 3/4"	1/16"	30"
x89	13 7/8"	14 3/4"	5/8"	30"
x73	13 5/8"	14 5/8"	1/2"	30"
HP 12x84	12 1/4"	12 1/4"	1/16"	24"
x74	12 1/8"	12 1/4"	5/8"	24"
x63	12"	12 1/8"	1/2"	24"
x53	11 3/4"	12"	7/16"	24"
HP 10x57	10"	10 1/4"	9/16"	24"
x42	9 3/4"	10 1/8"	7/16"	24"
HP 8x36	8"	8 1/8"	7/16"	18"



ELEVATION



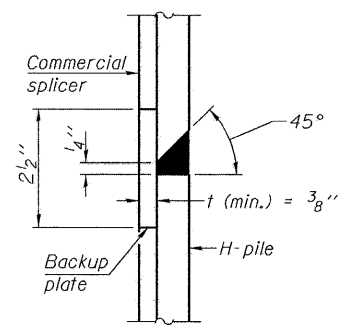
ELEVATION



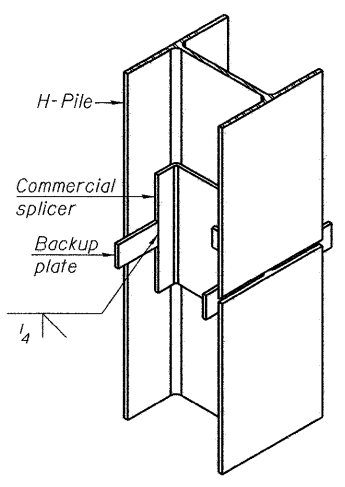
SECTION A-A

Note:  
Forms for encasement may be omitted when soil conditions permit.

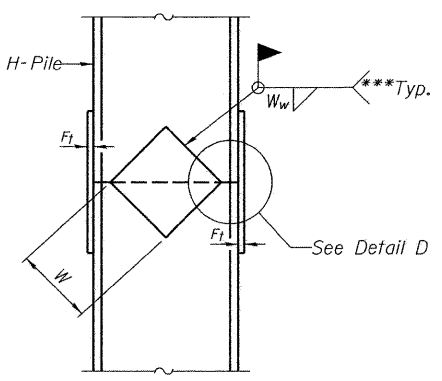
PILE ENCASEMENT



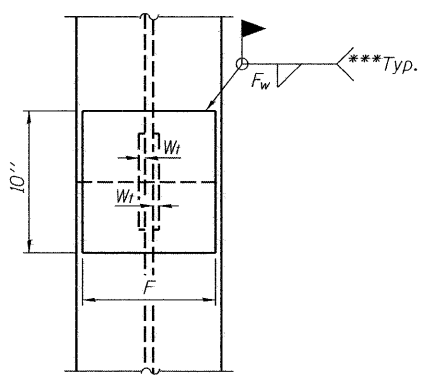
DETAIL "B"



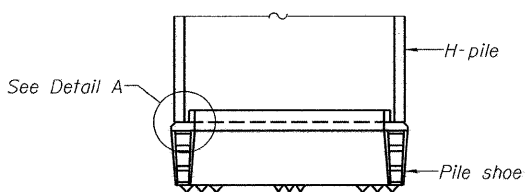
ISOMETRIC VIEW



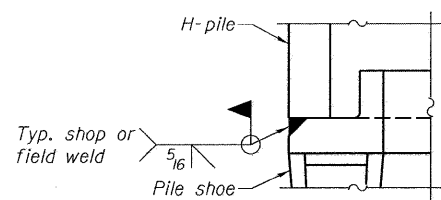
ELEVATION



END VIEW

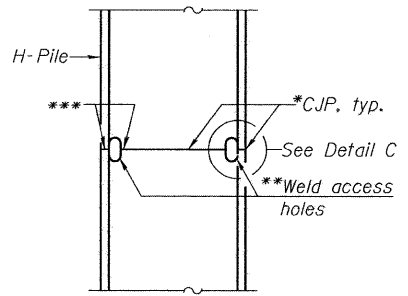


ELEVATION

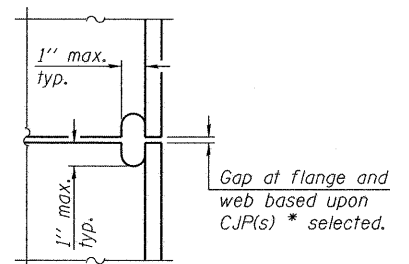


DETAIL A

H-PILE SHOE ATTACHMENT

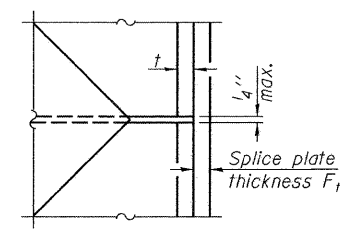


ELEVATION



DETAIL C

COMPLETE PENETRATION WELD SPLICE



DETAIL D

WELDED PLATE FIELD SPLICE

Designation	F	Ft	Fw	W	Wt	Ww
HP 14x117	12 1/2"	1"	7/8"	7 3/4"	5/8"	1/2"
x102	12 1/2"	7/8"	3/4"	7 3/4"	5/8"	1/2"
x89	12 1/2"	3/4"	1/16"	7 3/4"	5/8"	1/2"
x73	12 1/2"	5/8"	9/16"	7 3/4"	5/8"	1/2"
HP 12x84	10"	7/8"	1/16"	6 1/2"	5/8"	1/2"
x74	10"	7/8"	1/16"	6 1/2"	5/8"	1/2"
x63	10"	5/8"	1/2"	6 1/2"	1/2"	3/8"
x53	10"	5/8"	1/2"	6 1/2"	1/2"	3/8"
HP 10x57	8"	3/4"	9/16"	5 1/4"	1/2"	3/8"
x42	8"	5/8"	9/16"	5 1/4"	1/2"	3/8"
HP 8x36	7"	5/8"	7/16"	4 1/4"	1/2"	3/8"

Note:  
The steel H-piles shall be according to AASHTO M270 Grade 50.

\* Use joint conforming to Figure 3.4 in AWS D1.1, Structure Welding Code - Steel.  
\*\* Preparation per Fig. 5.2 in AWS D1.1, Structure Welding Code - Steel.  
\*\*\* Interrupt welds 1/4" from end of each pile.

DESIGNED CMF
CHECKED TMM
DRAWN RNH
CHECKED TMM

**McDonough-Whitlow, P.C.**  
Consulting Engineers & Land Surveyors  
138 East Wood Street  
Hillsboro, IL 62049  
Phone: 217.532.9233  
Fax: 217.532.6300  
PROFESSIONAL DESIGN NO. 184-002754

SHEET NO. 10 12 SHEETS	F.A.S. RTE.	SECTION	COUNTY	TOTAL SHEETS	SHEET NO.
	721	08-00128-00 BR	MONTGOMERY	22	16
CONTRACT NO. 93496					
FED. ROAD DIST. NO. ILLINOIS FED. AID PROJECT					

HP PILE DETAILS  
STRUCTURE NO. 068-3358



STATE OF ILLINOIS  
DEPARTMENT OF TRANSPORTATION

HOLCOMB FOUNDATION ENGINEERING INC. P.O. Box 88 618-529-5262 Carbondale, Il. 62903 618-457-8991 fax Page 1 of 1											
Bridge Foundation Boring Log											
Project: <u>H-08246</u> Bridge <u>Over East Fork - Shoal Creek</u> Date: <u>10/21/08</u> Section: <u>08-00128-00-BR</u> Station <u>342+69</u> Route: <u>CH #8 F.A.S. 721</u> Bored by: <u>D. Russell</u> County: <u>Montgomery County</u> Checked By: <u>T. Holcomb</u>											
Boring No: <u>1</u> Station: _____ Offset: _____		Elevation N Qu tsf w %		Surface Water Elev. _____ Ground Water Elev. _____ During Drilling <u>571.2</u> Upon Completion <u>576.2</u>		Elevation N Qu tsf w %					
Ground Surface <u>590.2</u> 0 3" A-3 over 6" Cr. Stone <u>589.5</u>				(shale continued)							
Gray Mottled Brown Sandy CLAY (A-6) with rubble		6 --- -		100 /3 4.7 14							
Limestone-Auger Refusal <u>565.2 - 25</u> End of Boring @ -25.5'		565.2 - 25 /1 - 6									
581.2 Gray Clayey SAND (A-2-4)		4 0.6S 18									
576.2 Gray Medium to Coarse SAND (A-2-4)		3 --- 21									
573.7 Gray Clayey SAND (A-2-4)		7 --- 26									
571.2 Gray Medium to Coarse SAND (A-2-4) with clay		4 --- 21									
568.7 Gray SHALE		39 5.7S 16									
N = Standard Penetration Test Blows per foot to drive 2" O.D. Split Spoon Sampler 12" with a 140 lbs. hammer falling 30" Qu-Unconfined Compressive Strength in tons/sq.ft. w-Water Content-percentage of oven dry weight-% B = Bulge Failure S = Shear Failure E = Estimated Value P = Penetrometer											

HOLCOMB FOUNDATION ENGINEERING INC. P.O. Box 88 618-529-5262 Carbondale, Il. 62903 618-457-8991 fax Page 1 of 1											
Bridge Foundation Boring Log											
Project: <u>H-08246</u> Bridge <u>Over East Fork - Shoal Creek</u> Date: <u>10/21/08</u> Section: <u>08-00128-00-BR</u> Station <u>342+69</u> Route: <u>CH #8 F.A.S. 721</u> Bored by: <u>D. Russell</u> County: <u>Montgomery County</u> Checked By: <u>T. Holcomb</u>											
Boring No: <u>2</u> Station: _____ Offset: _____		Elevation N Qu tsf w %		Surface Water Elev. _____ Ground Water Elev. _____ During Drilling <u>573.0</u> Upon Completion _____		Elevation N Qu tsf w %					
Ground Surface <u>592.0</u> 0 3" A-3 over 6" Cr. Stone <u>591.2</u>				SAND (A-2-4) with gravel				11 --- 17			
Brown Sandy CLAY (A-6)		6 1.2S 13		567.5 /5 5.3S 13							
Gray SHALE		4 0.9S 20		566.0 /3 - 5							
583.0 Gray Sandy CLAY (A-6)		3 1.0S 19		End of Boring @ -26.5'							
575.5 Brown Mottled Gray Clayey SAND (A-2-4)		6 --- 18									
573.0 Brown Medium to Coarse SAND (A-2-4) with clay		11 --- 22									
570.5 Brown Medium to Coarse											
N = Standard Penetration Test Blows per foot to drive 2" O.D. Split Spoon Sampler 12" with a 140 lbs. hammer falling 30" Qu-Unconfined Compressive Strength in tons/sq.ft. w-Water Content-percentage of oven dry weight-% B = Bulge Failure S = Shear Failure E = Estimated Value P = Penetrometer											

DESIGNED <u>CMF</u>
CHECKED <u>TMM</u>
DRAWN <u>RNH</u>
CHECKED <u>TMM</u>

SOIL BORINGS  
STRUCTURE NO. 068-3358

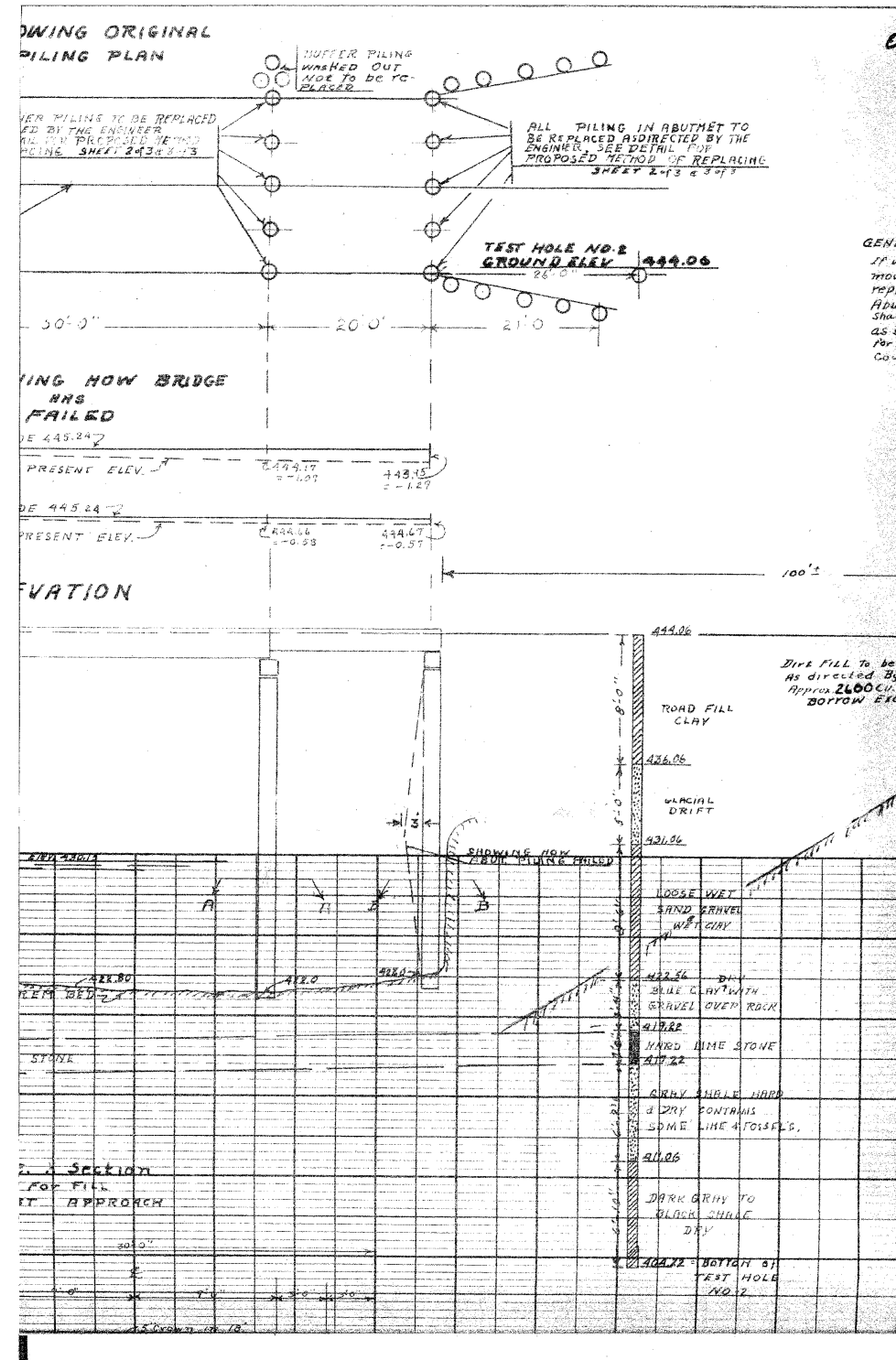
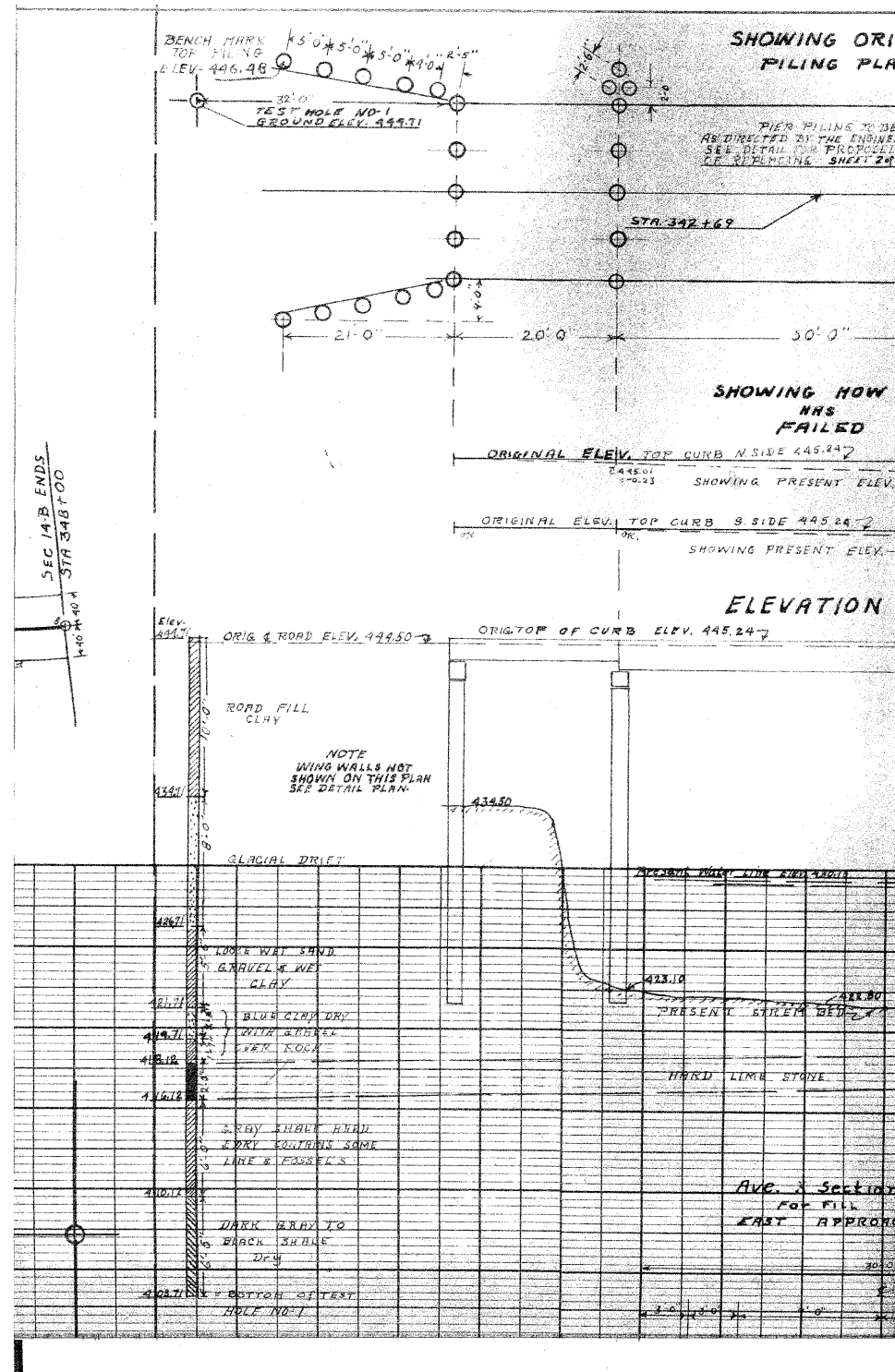


McDonough-Whitlow, P.C.  
Consulting Engineers & Land Surveyors  
138 East Wood Street  
Hillsboro, IL 62049  
Phone: 217.532.9233  
Fax: 217.532.6300  
PROFESSIONAL DESIGN No. 184-022754

SHEET NO. 11  
12 SHEETS

F.A.S. RTE.	SECTION	COUNTY	TOTAL SHEETS	SHEET NO.
721	08-00128-00 BR	MONTGOMERY	22	17
CONTRACT NO. 93496				
FED. ROAD DIST. NO. ILLINOIS FED. AID PROJECT				

STATE OF ILLINOIS  
DEPARTMENT OF TRANSPORTATION



Notes:  
Borings completed for rehabilitation of existing structure (068-3009) under M.F.T. Section 14-1B, S.A. Route 8. From the best information available, the borings appear to have been sampled approximately in 1957.  
The elevation datum used for the rehabilitation plans differs from that currently used on these plans. As a reference, Elev. 444.5' this sheet = Elev. 592.0' on these plans.

SOIL BORINGS  
STRUCTURE NO. 068-3358

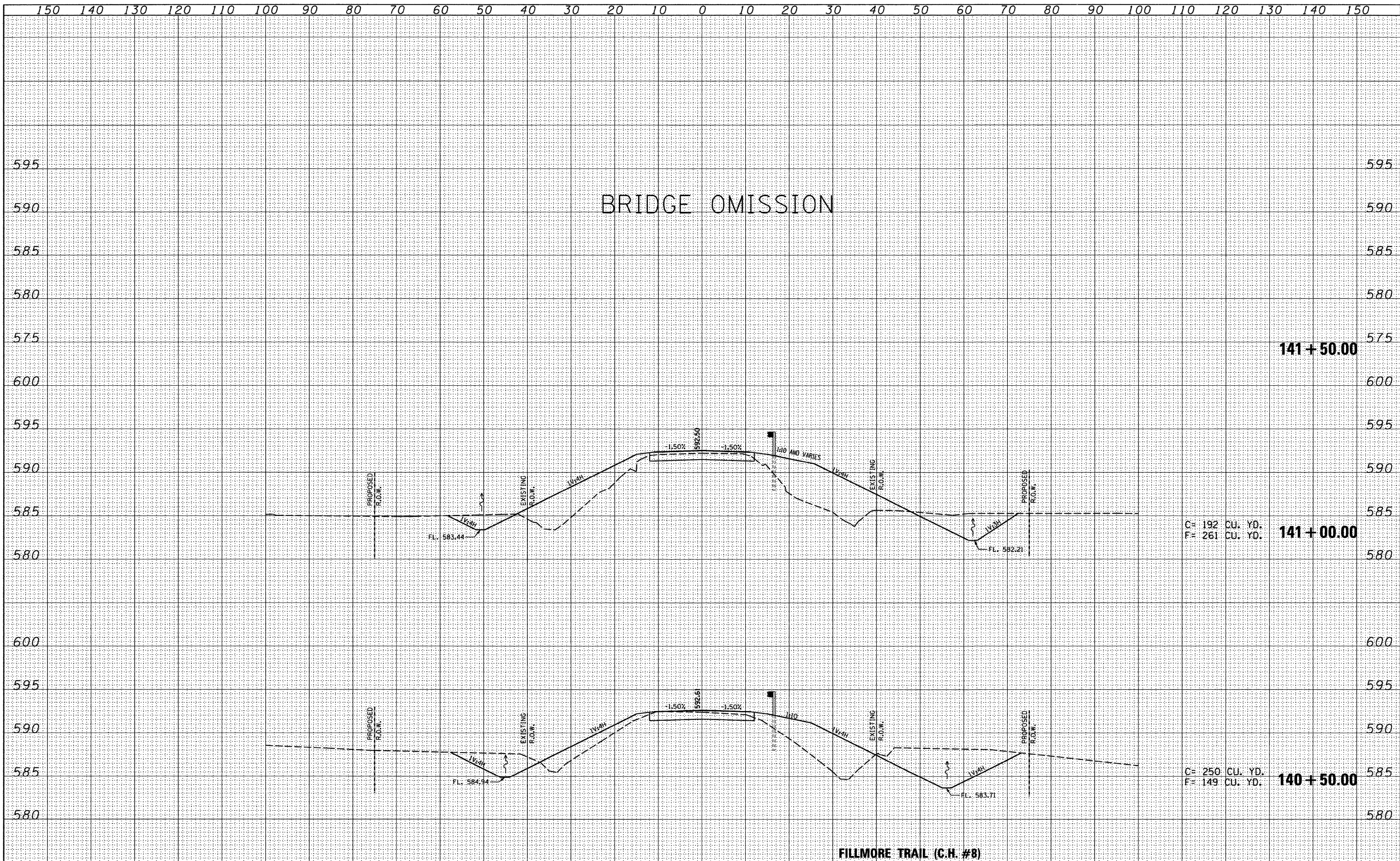
DESIGNED	CMF
CHECKED	TMM
DRAWN	RNH
CHECKED	TMM

McDonough-Whitlow, P.C. Consulting Engineers & Land Surveyors 138 East Wood Street Hillsboro, IL 62049 Phone: 217.532.9233 Fax: 217.532.6300 PROFESSIONAL DESIGN No. 184-002754	SHEET NO. 12	F.A.S. RTE.	SECTION	COUNTY	TOTAL SHEETS	SHEET NO.
	12 SHEETS	721	08-00128-00 BR	MONTGOMERY	22	18
					CONTRACT NO. 93496	
FED. ROAD DIST. NO. - ILLINOIS FED. AID PROJECT						



FINAL SURVEY	DATE
SUBMITTED	BY
PLOTTED	
TEMPLATE	
AREAS CHECKED	
NO.	

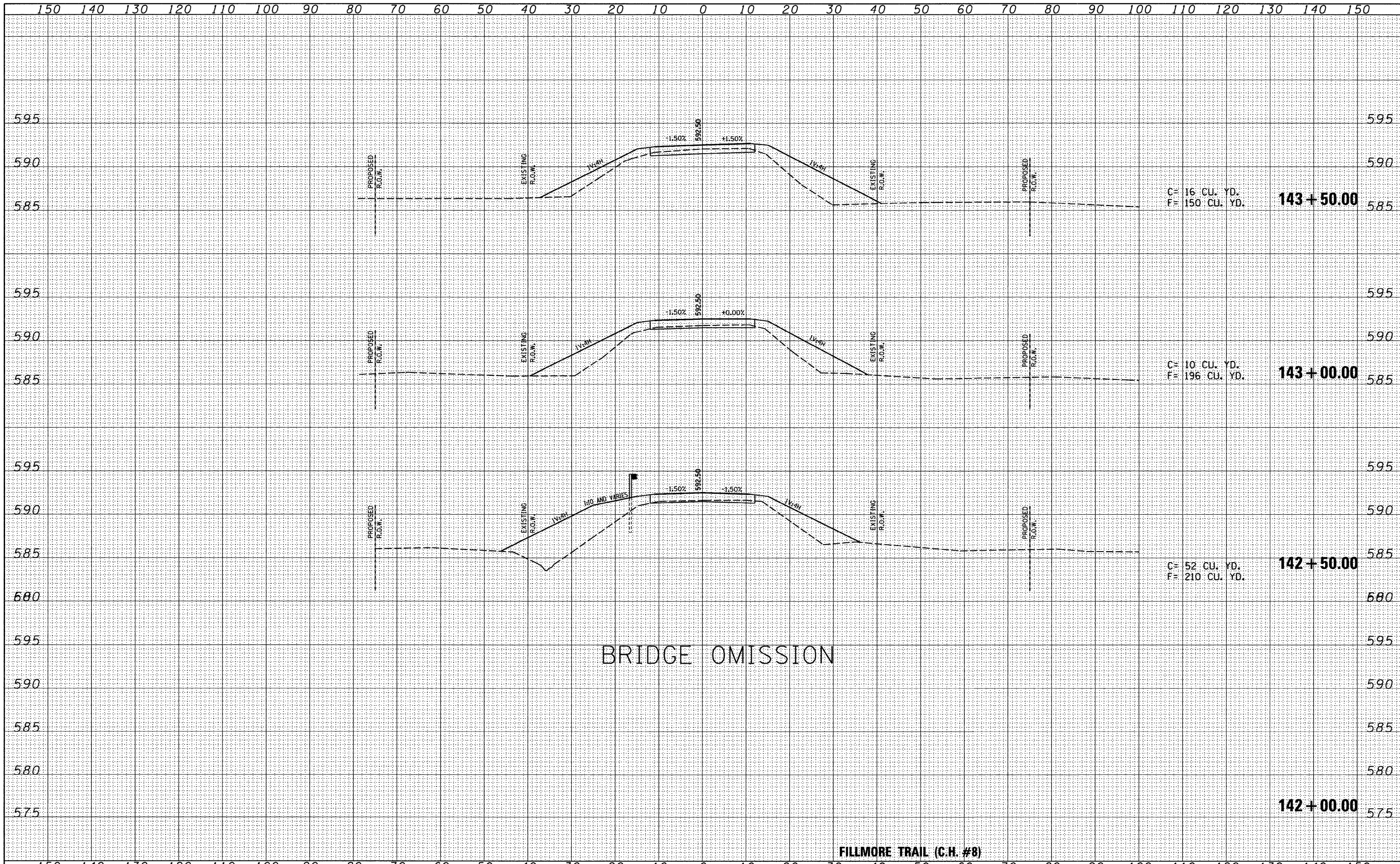
ORIGINAL SURVEY	DATE
SUBMITTED	BY
PLOTTED	
TEMPLATE	
AREAS CHECKED	
NO.	



FILE NAME = plan&profile.dgn	USER NAME = EJr	DESIGNED - CMF	REVISOR -	McDonough-Whitlow, P.C. Consulting Engineers & Land Surveyors 138 East Wood Street Hillsboro, IL 62049 Phone: 217-332-9233 Fax: 217-332-4300 PROFESSIONAL DESIGN NO. 184-02754	<b>CROSS SECTIONS</b> SCALE: H:1"=10' V:1"=5' SHEET NO. ___ OF ___ SHEETS STA. 140+50 TO STA. 141+50		F.A.S. RTE.	SECTION	COUNTY	TOTAL SHEETS	SHEET NO.
	PLOT SCALE = 50'	DRAWN - EJr	REVISOR -				721	08-00128-00-BR	MONTGOMERY	22	20
	PLOT DATE = 3-12-09	CHECKED - KCM	REVISOR -		CONTRACT NO. 9496		ILLINOIS FED. AID PROJECT				
		DATE - 3-12-09	REVISOR -								

FINAL SURVEY	DATE
SURVEYED	BY
TEMPLATE	
AREAS CHECKED	
NO.	

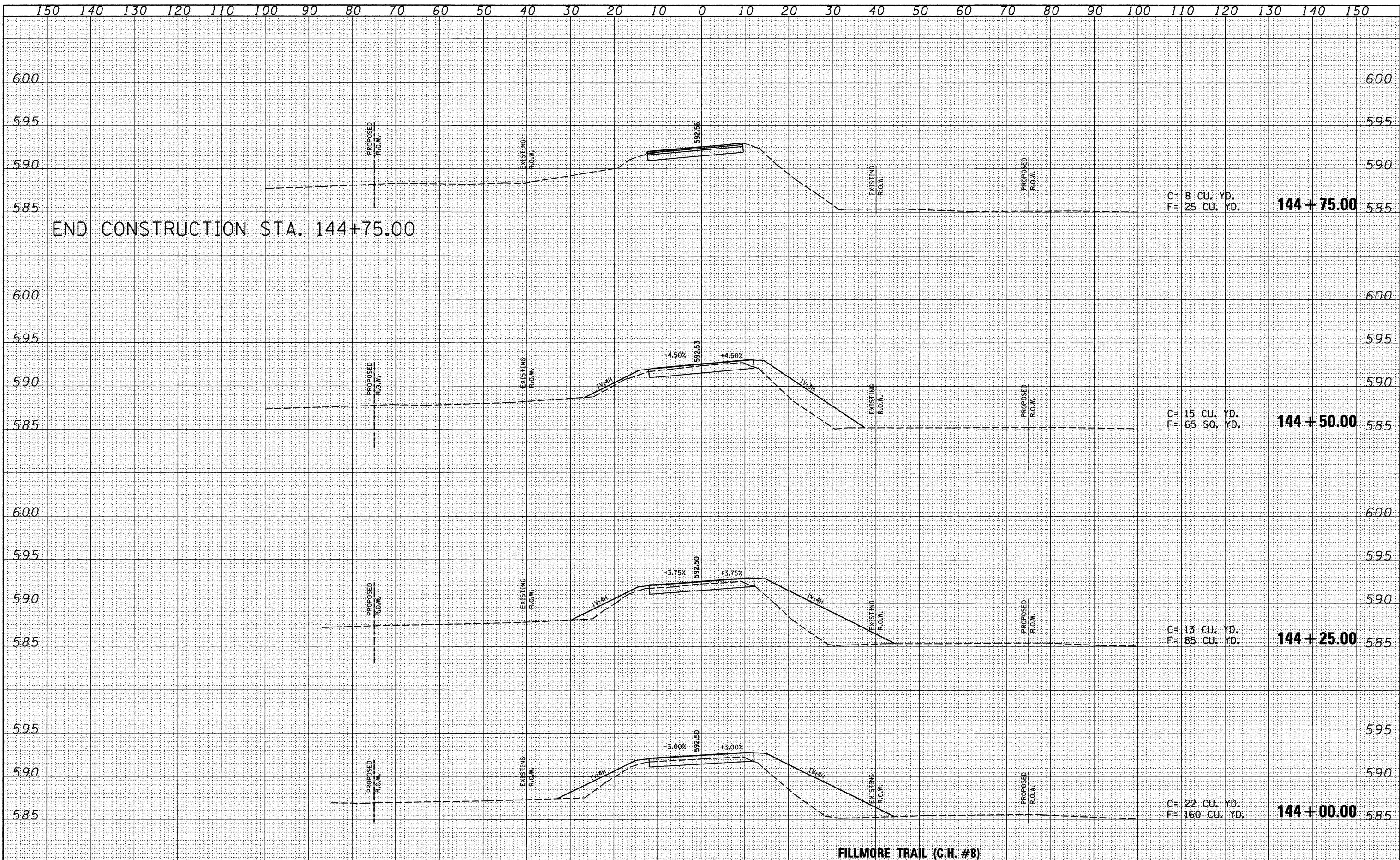
ORIGINAL SURVEY	DATE
SURVEYED	BY
TEMPLATE	
AREAS CHECKED	
NO.	



FILE NAME = plan&profile.dgn	USER NAME = EJR	DESIGNED - CMF	REVISED -	McDonough-Whitlow, P.C. Consulting Engineers & Land Surveyors 138 East Wood Street Hillboro, IL 62049 Phone: 217-532-9233 Fax: 217-532-6300 PROFESSIONAL DESIGN NO. 184-002754	<b>CROSS SECTIONS</b>		F.A.S. RTE. 721	SECTION 08-00128-00-BR	COUNTY MONTGOMERY	TOTAL SHEETS 22	SHEET NO. 21
	PLOT SCALE = 50'	DRAWN - EJR	REVISED -		SCALE: H=1"=10' V=1"=5'		SHEET NO. ___ OF ___ SHEETS		STA. 142+00 TO STA. 143+50		CONTRACT NO. 3496
	PLOT DATE = 3-12-09	CHECKED - KCM	REVISED -		ILLINOIS FED. AID PROJECT						
		DATE - 3-12-09	REVISED -								

FINAL SURVEY	DATE
SURVEYED	BY
PLOTTED	
TEMPLATE	
AREAS	
CHECKED	
NO.	

ORIGINAL SURVEY	DATE
SURVEYED	BY
PLOTTED	
TEMPLATE	
AREAS	
CHECKED	
NO.	



FILE NAME = plan&profile.dgn	USER NAME = EJR	DESIGNED - CMF	REVISED -	McDonough-Whitlow, P.C. Consulting Engineers & Land Surveyors 138 East Wood Street Hillboro, IL 62449 Phone: 217-532-9233 Fax: 217-532-6500 PROFESSIONAL DESIGN NO. 184-002754	<b>CROSS SECTIONS</b>		F.A.S. RTE.	SECTION	COUNTY	TOTAL SHEETS	SHEET NO.
PLOT SCALE = 50	CHECKED - KCM	REVISED -	721				08-00128-00-BR	MONTGOMERY	22	22	
PLOT DATE = 3-12-09	DATE - 3-12-09	REVISED -	REVISED -		SCALE: H=1"=10' V=1"=5'		SHEET NO. ___ OF ___ SHEETS		STA. 144+00 TO STA. 144+75		CONTRACT NO. 93496
ILLINOIS FED. AID PROJECT											