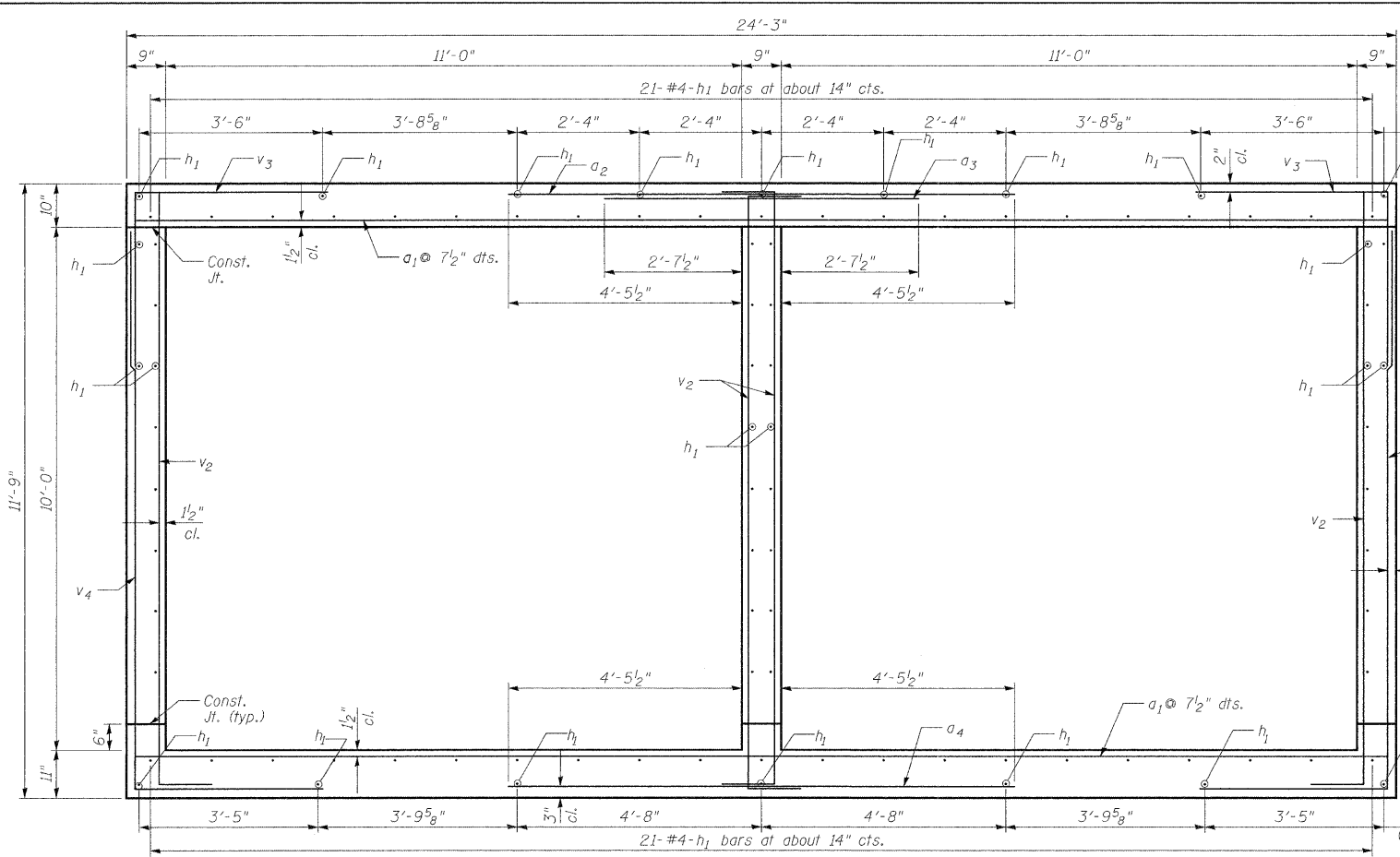
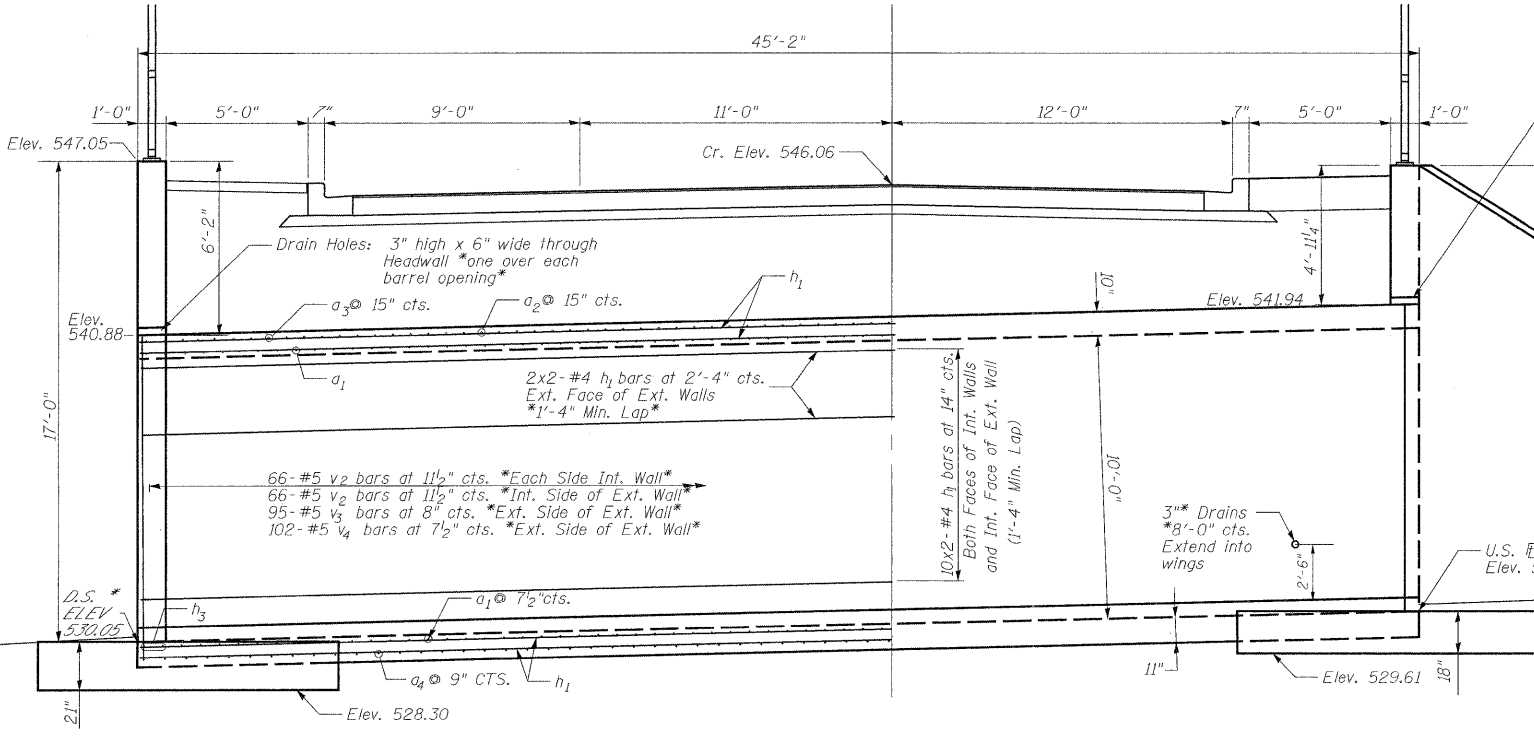
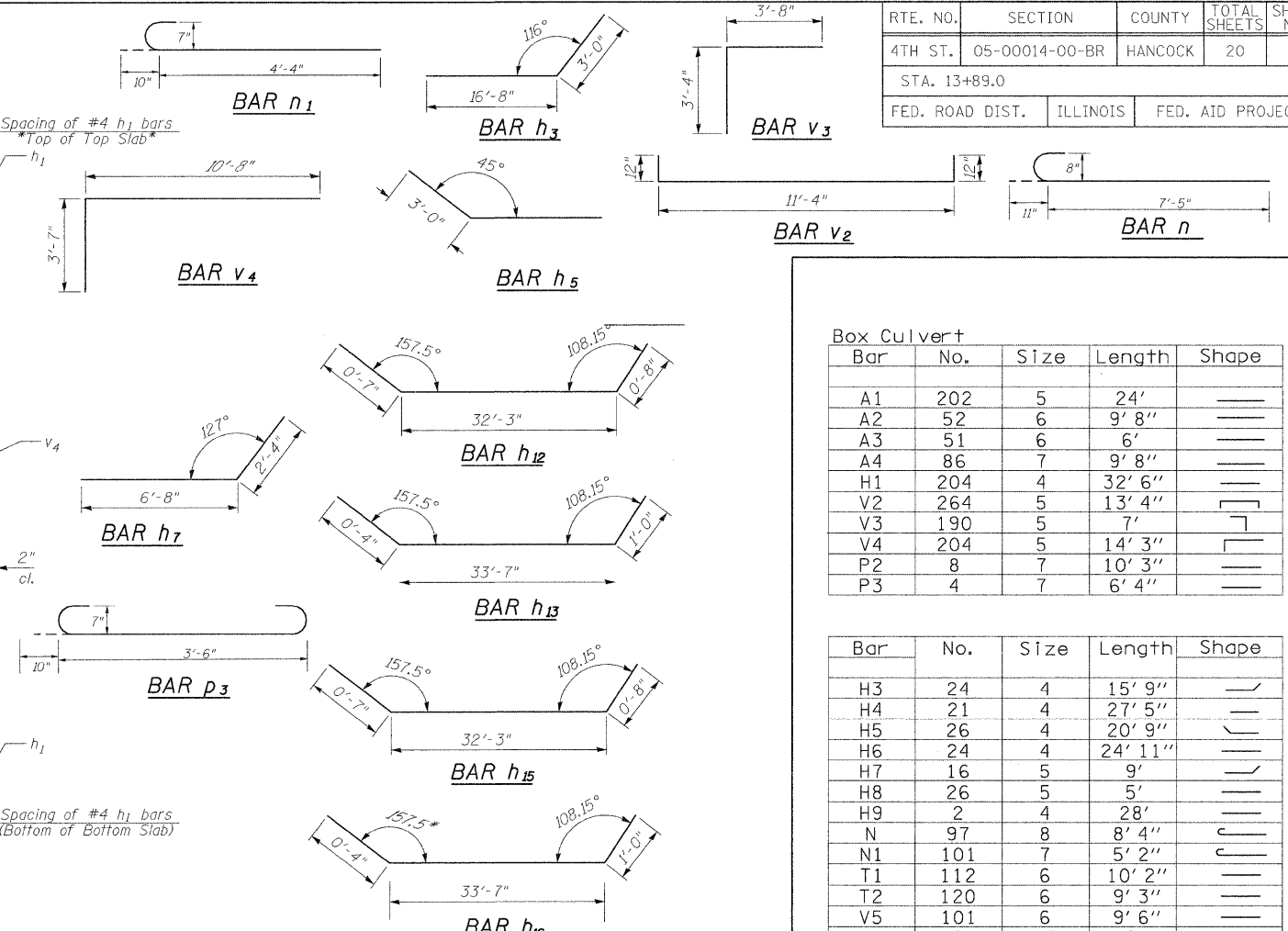


RTE. NO.	SECTION	COUNTY	TOTAL SHEETS	SHEET NO.
4TH ST.	05-00014-00-BR	HANCOCK	20	14
STA. 13+89.0				
FED. ROAD DIST.	ILLINOIS	FED. AID PROJECT		



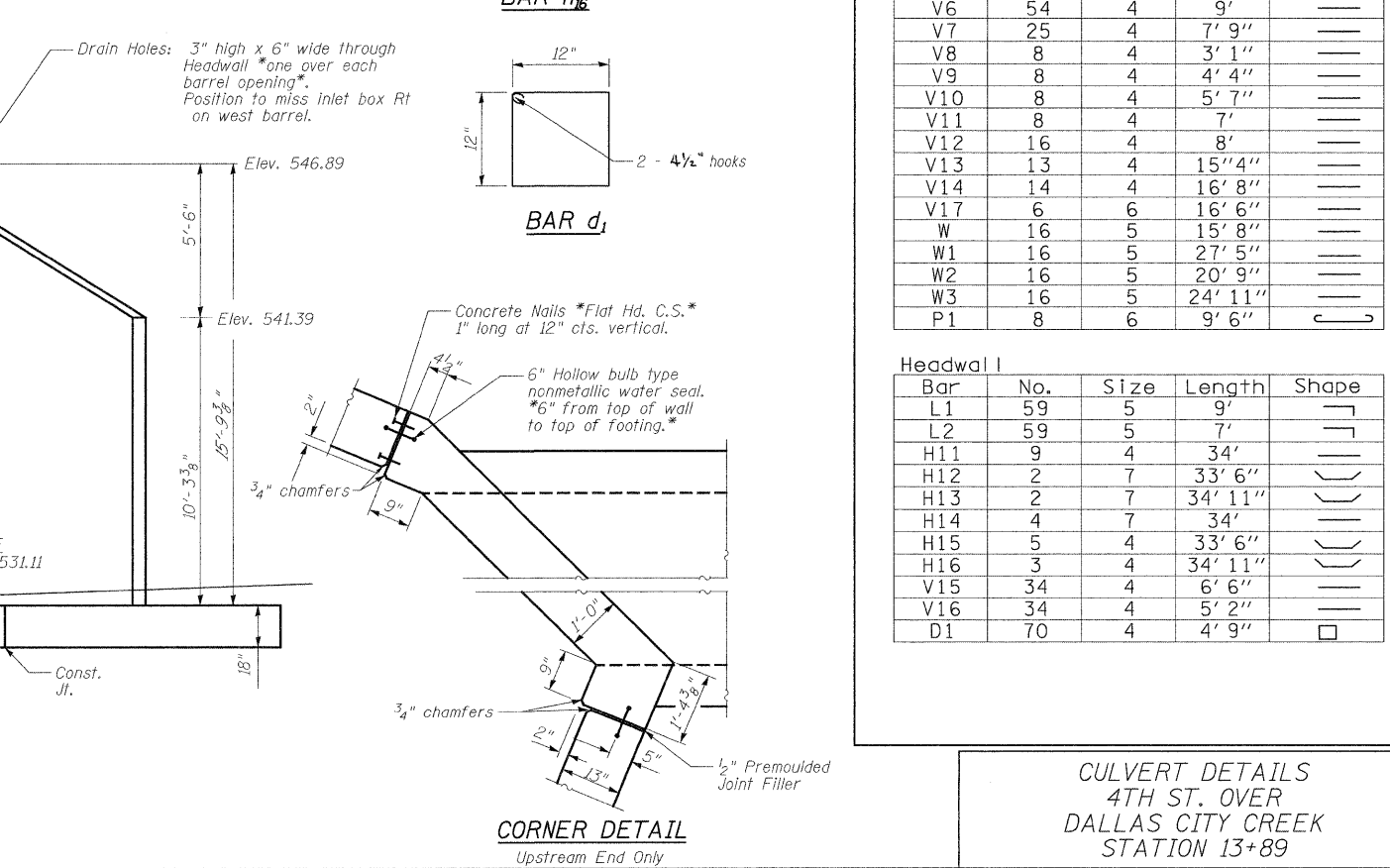
SECTION THRU BARREL



**HALF LONG. SECTION
SHOWING REINFORCEMENT**

**HALF ELEVATION
SHOWING OUTLINES**

Dimensions at Rt. angles to * Roadway



**CORNER DETAIL
Upstream End Only**

Box Culvert

Bar	No.	Size	Length	Shape
A1	202	5	24'	—
A2	52	6	9' 8"	—
A3	51	6	6'	—
A4	86	7	9' 8"	—
H1	204	4	32' 6"	—
V2	264	5	13' 4"	—
V3	190	5	7'	—
V4	204	5	14' 3"	—
P2	8	7	10' 3"	—
P3	4	7	6' 4"	—

Bar	No.	Size	Length	Shape
H3	24	4	15' 9"	—
H4	21	4	27' 5"	—
H5	26	4	20' 9"	—
H6	24	4	24' 11"	—
H7	16	5	9'	—
H8	26	5	5'	—
H9	2	4	28'	—
N	97	8	8' 4"	—
N1	101	7	5' 2"	—
T1	112	6	10' 2"	—
T2	120	6	9' 3"	—
V5	101	6	9' 6"	—
V6	54	4	9'	—
V7	25	4	7' 9"	—
V8	8	4	3' 1"	—
V9	8	4	4' 4"	—
V10	8	4	5' 7"	—
V11	8	4	7'	—
V12	16	4	8'	—
V13	13	4	15' 4"	—
V14	14	4	16' 8"	—
V17	6	6	16' 6"	—
W	16	5	15' 8"	—
W1	16	5	27' 5"	—
W2	16	5	20' 9"	—
W3	16	5	24' 11"	—
P1	8	6	9' 6"	—

Headwall

Bar	No.	Size	Length	Shape
L1	59	5	9'	—
L2	59	5	7'	—
H11	9	4	34'	—
H12	2	7	33' 6"	—
H13	2	7	34' 11"	—
H14	4	7	34'	—
H15	5	4	33' 6"	—
H16	3	4	34' 11"	—
V15	34	4	6' 6"	—
V16	34	4	5' 2"	—
D1	70	4	4' 9"	—

CULVERT DETAILS
4TH ST. OVER
DALLAS CITY CREEK
STATION 13+89

DESIGNED	- JLS	REVISED	-
DRAWN	- JLS	REVISED	-
CHECKED	- CSB	REVISED	-
DATE	- JUN 2008	REVISED	-

STATE OF ILLINOIS
DEPARTMENT OF TRANSPORTATION

CULVERT DETAILS
DALLAS CITY CULVERT

SHEET 3 OF 5

RTE.	SECTION	COUNTY	TOTAL SHEETS	SHEET NO.
4TH	05-00014-00-BR	HANCOCK	20	14
SN 034-6028 CONTRACT NO. 93497				
FED. ROAD DIST. NO.	ILLINOIS	FED. AID PROJECT		