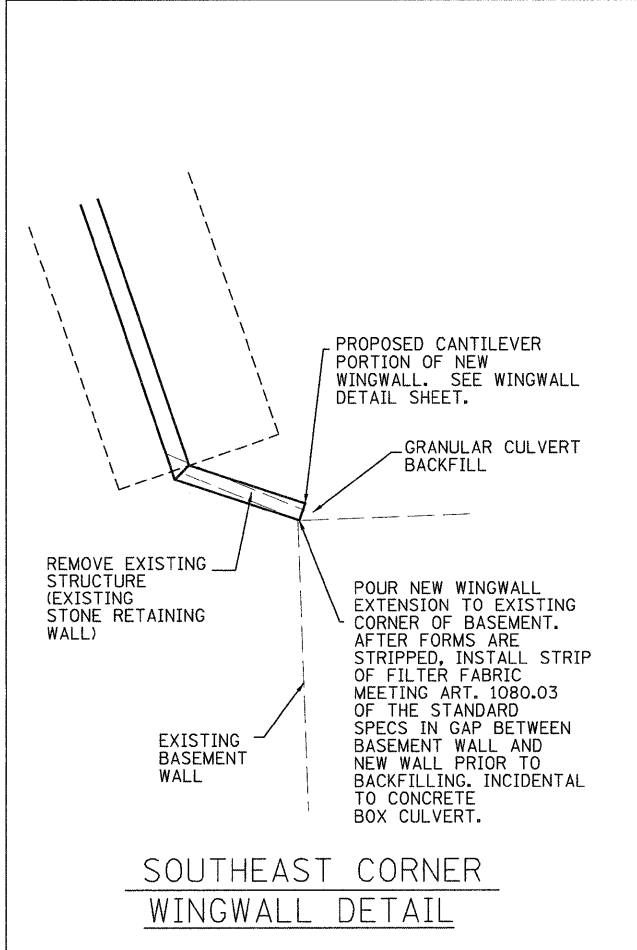
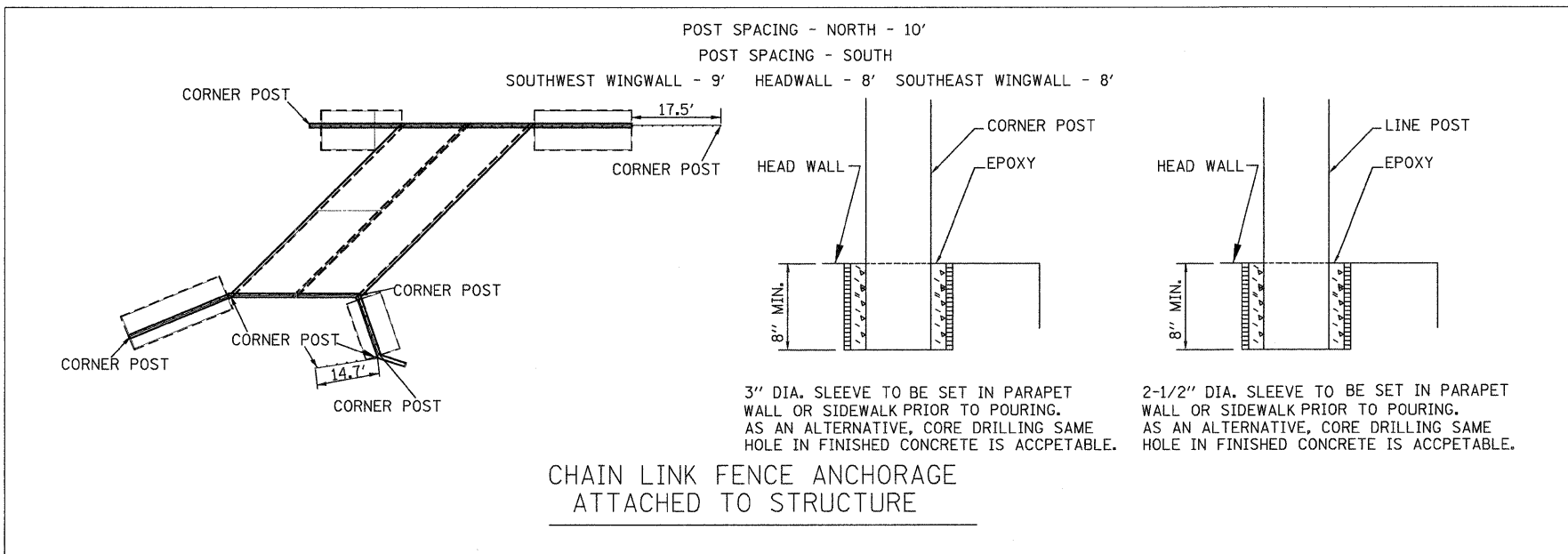
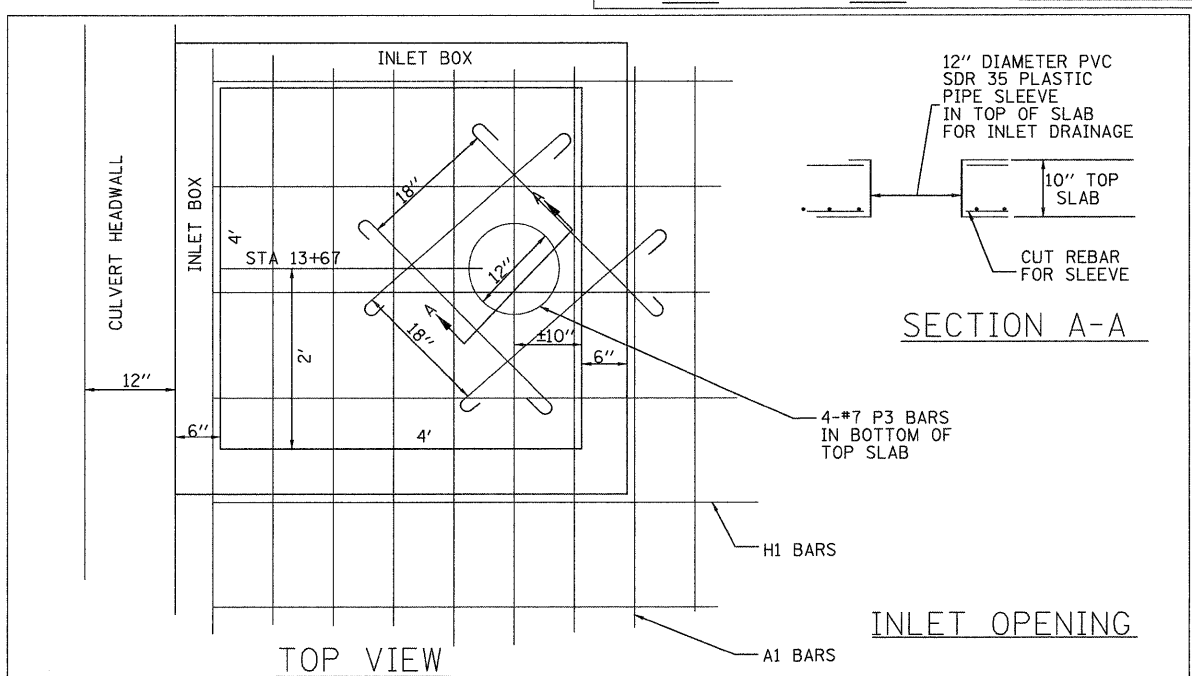
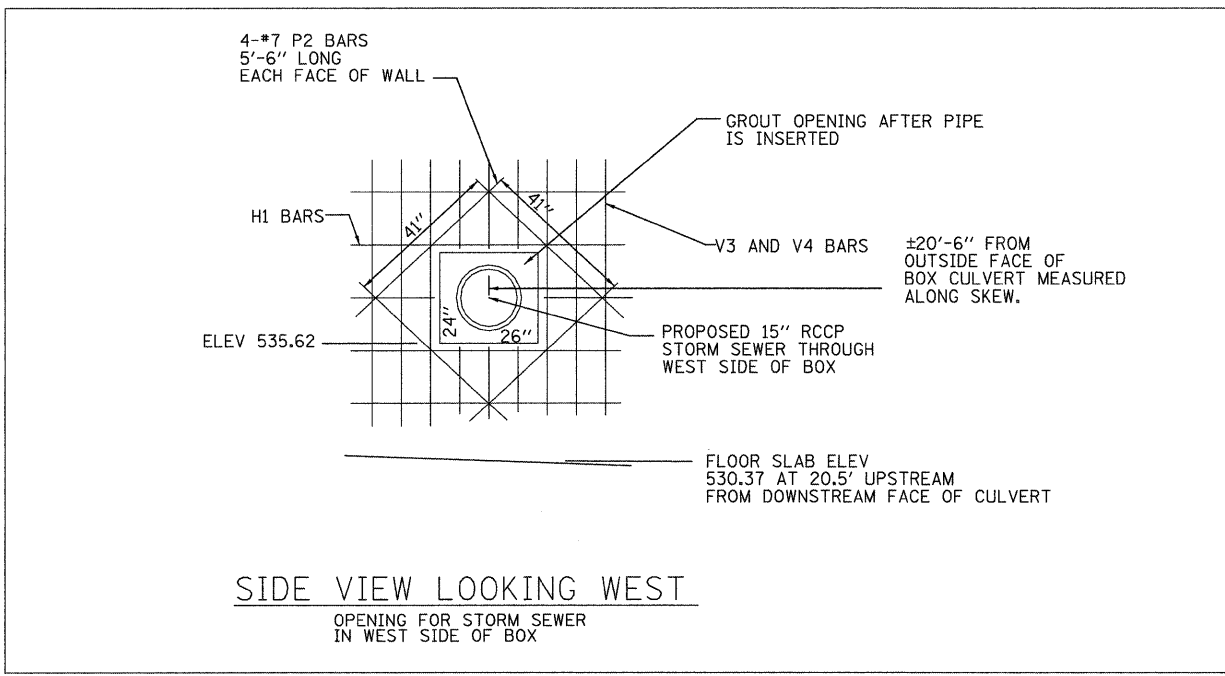
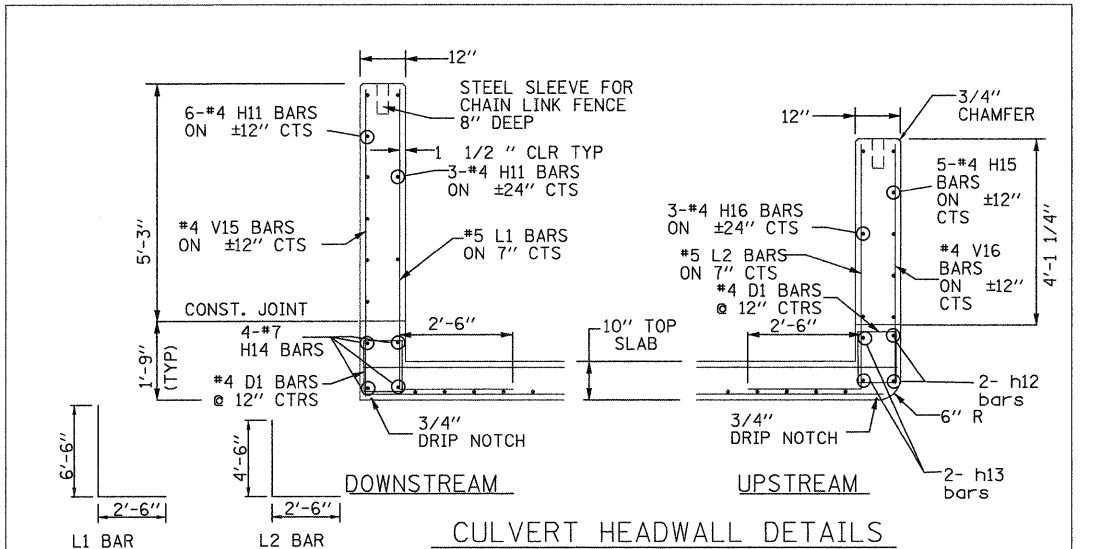


RTE. NO.	SECTION	COUNTY	TOTAL SHEETS	SHEET NO.
4TH ST.	05-00014-00-BR	HANCOCK	20	16
STA. 13+89.0				
FED. ROAD DIST.	ILLINOIS	FED. AID PROJECT		



DALLAS CITY CREEK
STA 13+89.00
BUILT 20__
CITY OF DALLAS CITY AND
THE HANCOCK COUNTY
HIGHWAY DEPARTMENT
SECTION 05-00014-00-BR
STR. NO. 034-6028
LOADING HS20-44

NAME PLATE



MISC CULVERT DETAILS
4TH ST. OVER
DALLAS CITY CREEK
STATION 13+89.0

RTE.	SECTION	COUNTY	TOTAL SHEETS	SHEET NO.
4TH	05-00014-00-BR	HANCOCK	20	16
SN 034-6028 CONTRACT NO. 3497				
FED. ROAD DIST. NO.	ILLINOIS	FED. AID PROJECT		

DESIGNED - JLS	REVISED -
DRAWN - JLS	REVISED -
CHECKED - CSB	REVISED -
DATE - JUN 2008	REVISED -

STATE OF ILLINOIS
DEPARTMENT OF TRANSPORTATION

MISC CULVERT DETAILS
DALLAS CITY CULVERT