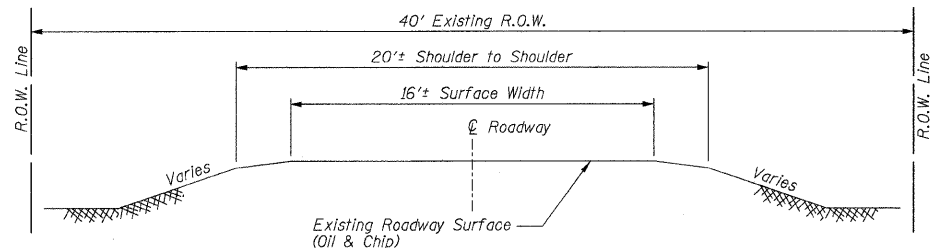
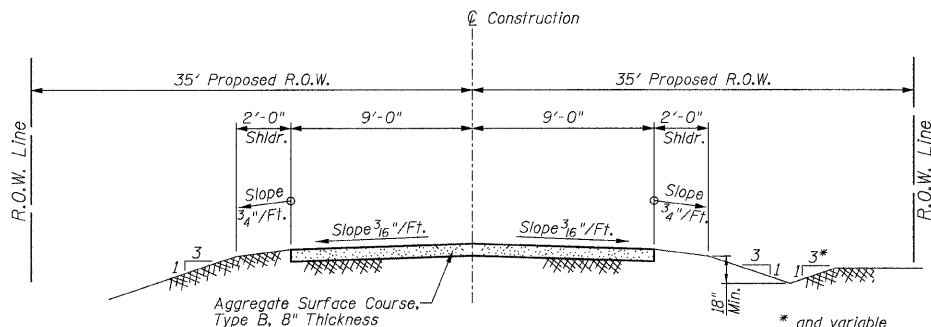


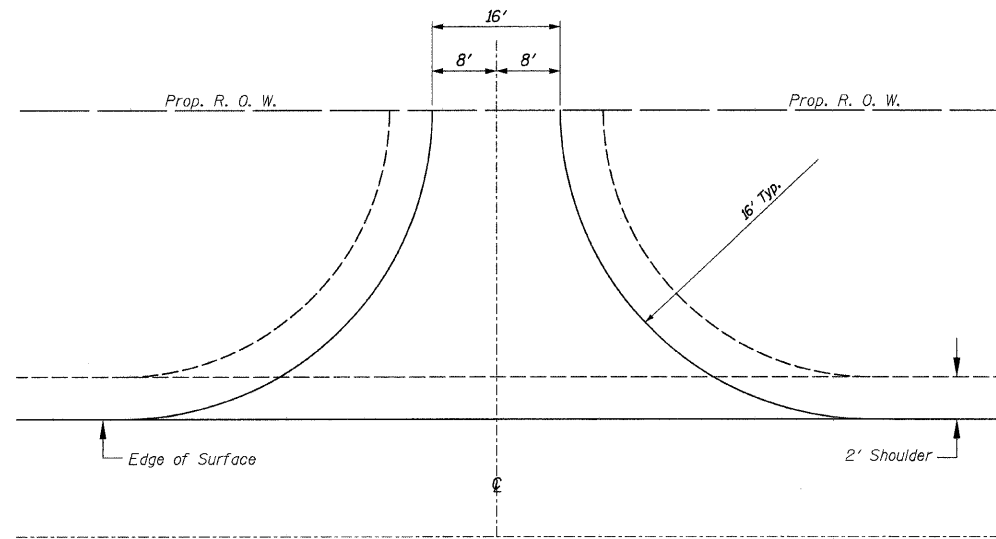
ROUTE	SECTION	COUNTY	TOTAL SHEETS	SHEET NO.
TR 140	07-11120-00-BR	FAYETTE	10	2
ILLINOIS				



**TYPICAL SECTION
EXISTING APPROACH ROADWAY**



**TYPICAL SECTION
PROPOSED APPROACH ROADWAY**



Aggregate Surface Course, Type B 6" Depth
Rt., Sta. 8+75.00 - 18 Ton
(Included in Summary of Quantities)

TYPICAL FIELD ENTRANCE

SUMMARY OF QUANTITIES

Code No.	Item	Unit	Quantity	Location	
				X081-2A	E000
20100500	TREE REMOVAL, ACRES	ACRE	0.3	-	0.3
20200100	EARTH EXCAVATION	CU YD	109	-	109
20300100	CHANNEL EXCAVATION	CU YD	168	168	-
20400800	FURNISHED EXCAVATION	CU YD	558	-	558
20700110	POROUS GRANULAR EMBANKMENT	TON	68	68	-
25001000	SEEDING, CLASS 2 (SPECIAL)	ACRE	0.6	-	0.6
28000300	TEMPORARY DITCH CHECKS	EACH	4	-	4
28100807	STONE DUMPED RIPRAP, CLASS A4	TON	92	92	-
40200800	AGGREGATE SURFACE COURSE, TYPE B	TON	493	-	493
50100100	REMOVAL OF EXISTING STRUCTURES	EACH	1	1	-
50300225	CONCRETE STRUCTURES	CU YD	17.6	17.6	-
50300280	CONCRETE ENCASEMENT	CU YD	2.8	2.8	-
50400505	PRECAST PRESTRESSED CONCRETE DECK BEAMS (27" DEPTH)	SQ FT	1512	1512	-
50800105	REINFORCEMENT BARS	POUND	3040	3040	-
* 50900205	STEEL RAILING, TYPE S1	FOOT	128	128	-
51201600	FURNISHING STEEL PILES HP12X53	FOOT	434	434	-
51202305	DRIVING PILES	FOOT	434	434	-
51203600	TEST PILE STEEL HP12X53	EACH	1	1	-
51500100	NAME PLATES	EACH	1	1	-
542C1060	PIPE CULVERTS, CLASS C, TYPE 2 15"	FOOT	36	-	36
67100100	MOBILIZATION	L SUM	1	-	-

* SPECIALTY ITEM

GENERAL NOTES

- This section shall be constructed according to the plans, the Special Provisions, and the "Standard Specifications for Road and Bridge Construction", adopted January 1, 2007.
- Any reference to a Standard in these plans shall be interpreted to mean the edition as indicated by the sub-number listed in the Index of Sheets or the copy of the Standard included in these plans.
- Roadway Centerline profiles refer to the finished surface.
- Existing utilities shown are located from surface observations or information provided by the respective utilities and must be considered approximate. There may be others, the exact location of which are unknown and not shown. The Contractor will be responsible for notifying the respective utilities before work is begun. Field marking of underground utilities may be obtained by providing a minimum of 48 hours advance notice through the J.U.L.I.E. system by calling 1-800-892-0123, or by direct contact with non-members of J.U.L.I.E.
- The Aggregate Surface Course, Type B gradation shall be CA 6 or CA 10. Only Class C quality crushed stone will be approved for use on this project.
- The nominal thickness for surface course is shown on the Typical Sections, Standards, Schedules, or Special Details. The constructed thickness of the above item shall not be less than 90 percent of the nominal thickness at any location.
- Factors used for quantity calculations are as follows:
 Porous Granular Embankment 2.1 tons/cu. yd.
 Stone Dumped Riprap 130 pounds/cu. ft.
 Aggregate Surface Course 2.1 tons/cu. yd.

UTILITIES

Electric: Clinton County Electric Co-op
475 N. Main Street
PO Box 40
Breese, IL 62230
618-526-7282

Telephone: Frontier Communications
801 Jackson Avenue
Altamont, IL 62411
618-483-6391

Water: FMC Water Company
1305 Ferrydale Road
Odin, IL 62870
618-775-6339

**SUMMARY OF QUANTITIES AND
TYPICAL SECTIONS
PROPOSED BRIDGE OVER
BEAR CREEK
TR 140
SECTION 07-11120-00-BR
FAYETTE COUNTY, ILLINOIS**