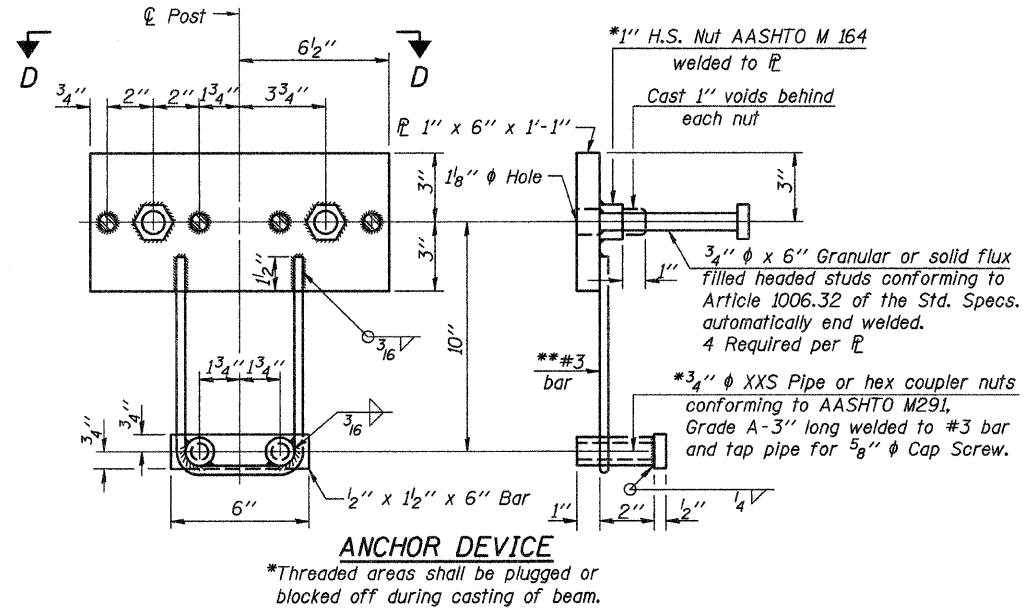
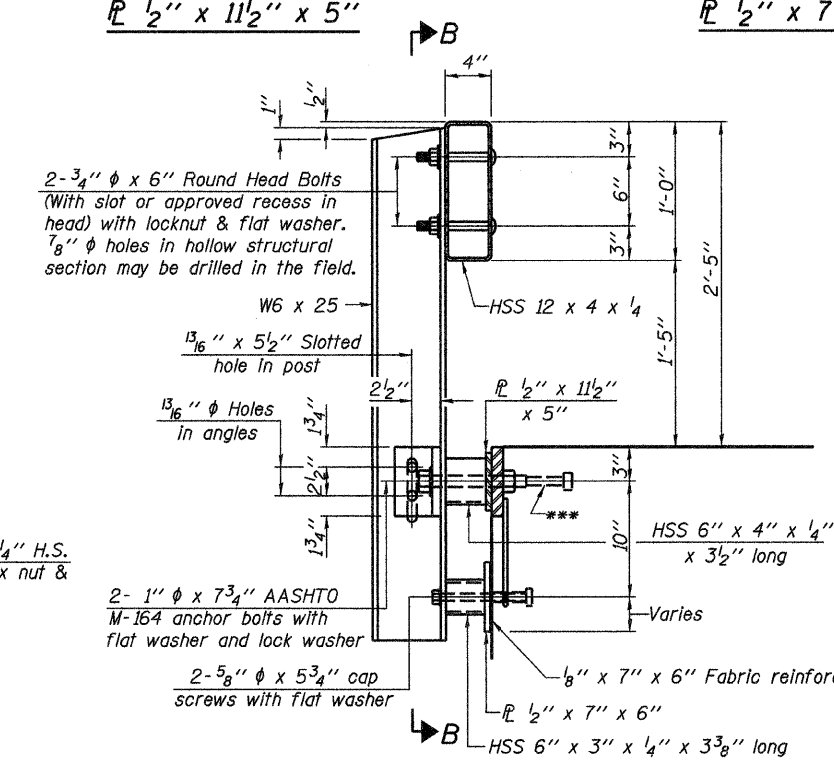
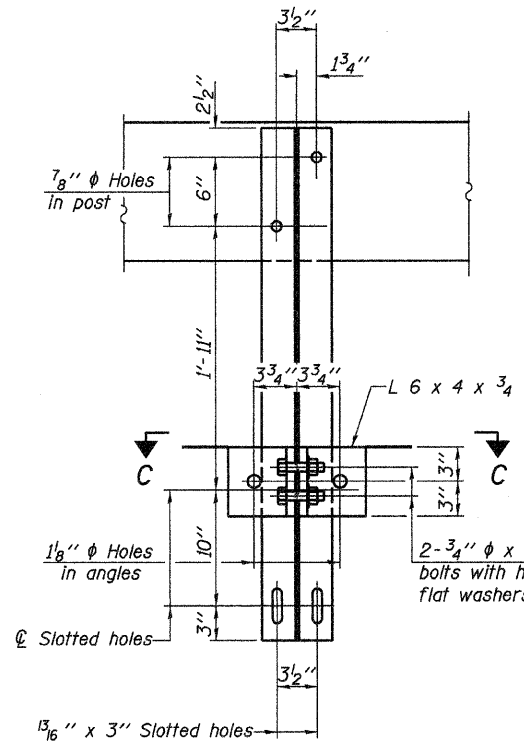
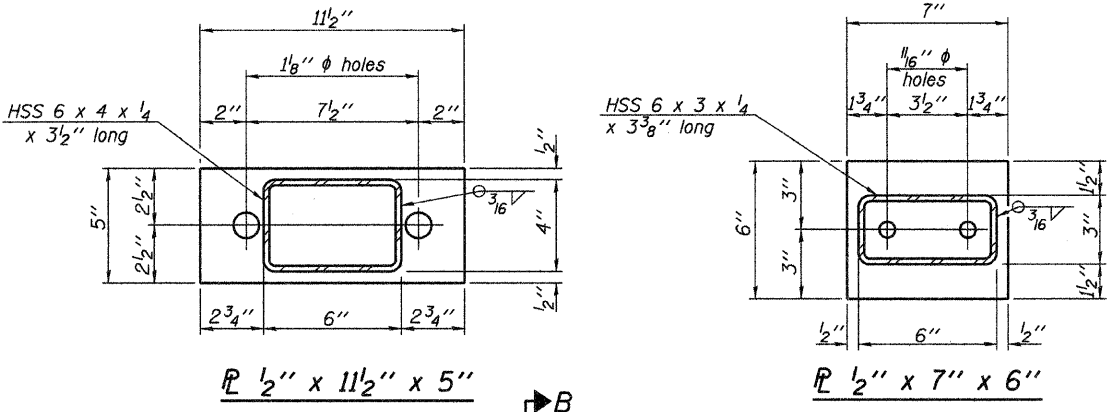
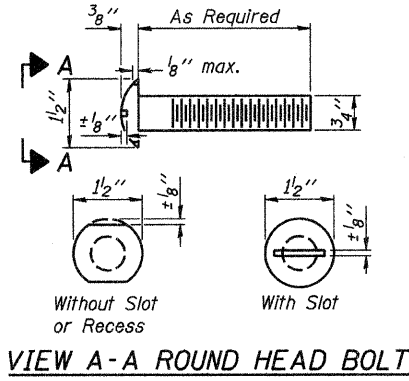
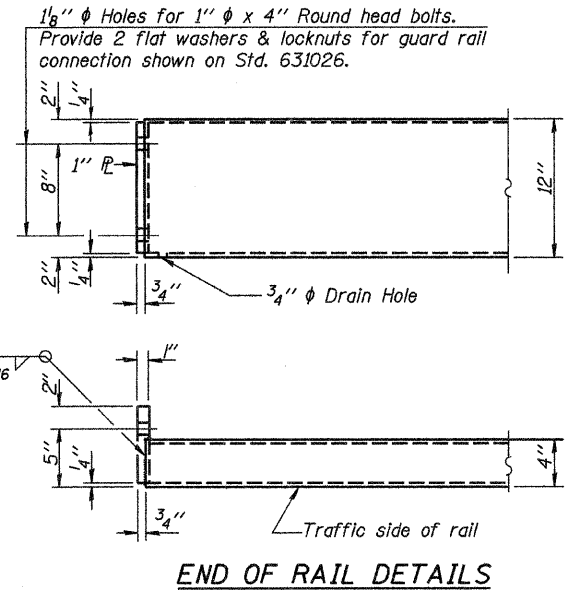
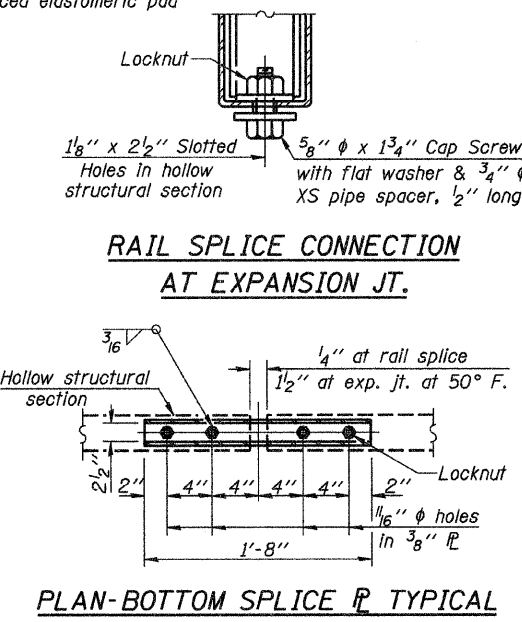
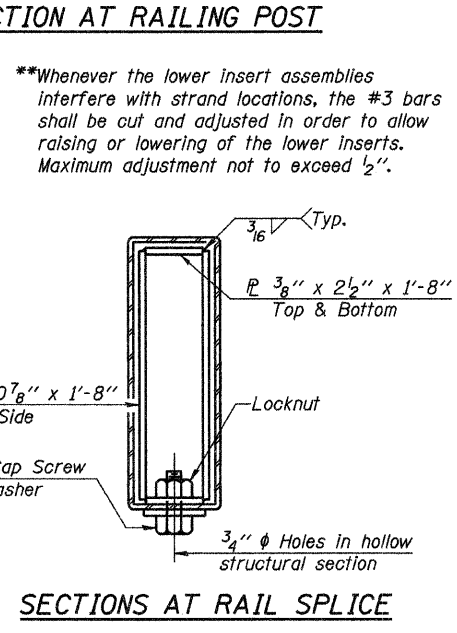
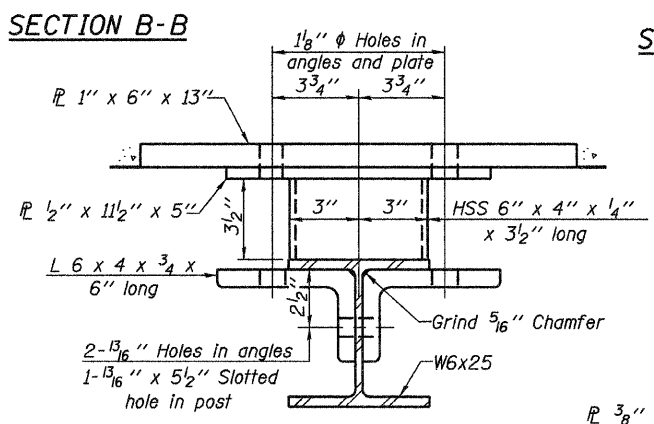
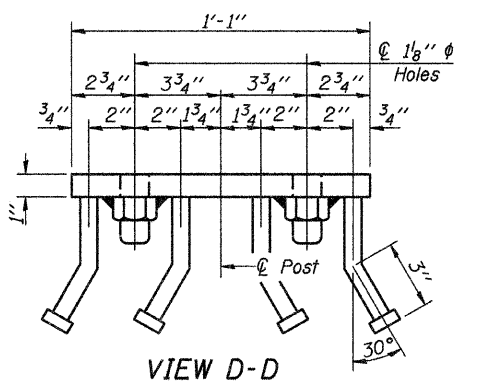


ROUTE NO.	SECTION	COUNTY	TOTAL SHEETS	SHEET NO.
TR 512	08-08123-00-BR	FAYETTE	14	11
FED. ROAD DIST. NO.		ILLINOIS	PROJECT	

CONTRACT NO. 95595



Notes:
 All field drilled holes shall be coated with an approved zinc rich paint before erection.
 For multi-span bridges, sufficient 1/4" x 6" x 1'-2" galvanized steel shims shall be provided to align rail between adjacent spans. Cost Included with Steel Railing, Type S-1.
 All steel rail elements shall be galvanized according to Article 509.05 of the Standard Specifications.
 ***The studs of the anchor devices shall be placed below the top reinforcement bars and the outermost longitudinal reinforcement bar shall be placed directly above the studs of the rail post anchor device.
 The maximum allowable rail post spacing shall be 10'-9". The rail post spacing shown elsewhere in the plans is based on the allowable spacing for another type of rail. When this type of rail is used, the number of posts may be decreased and the post spacing increased to provide equal post spaces of 10'-9" or less.



(10'-9" Maximum Post Spacing)

AECOM 2524 S. Broadway Salem, Illinois 62681 618.548.3500 IL Design Firm Reg. No. 184-003708 www.aecom.com	SLM-CR-TS1 STEEL RAILING TYPE S-1
	Date: 07/27/09 Design: MRQ Drawn: BLT Job No.: 200804643