

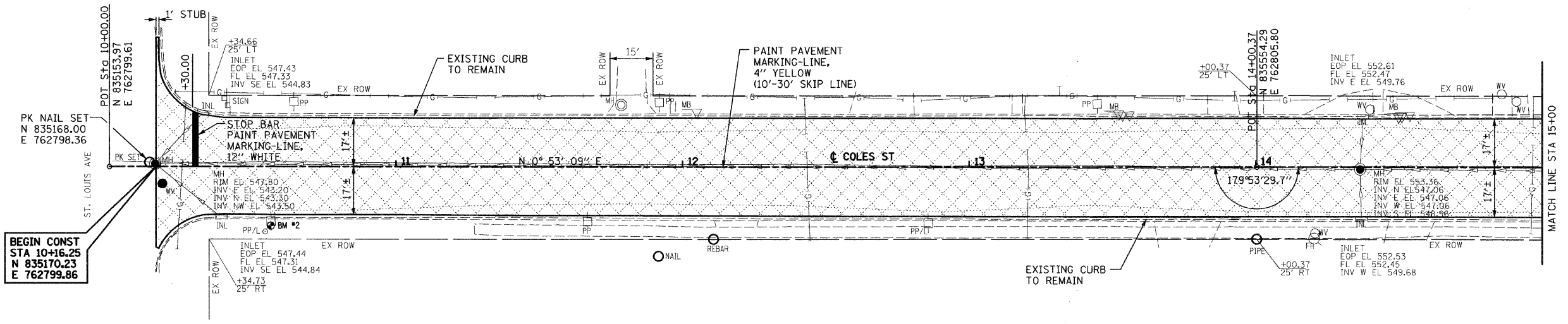
LEGEND

- MANHOLE TO BE ADJUSTED
- WV WATER VALVE TO BE ADJUSTED
- ▨ PCC PAVEMENT, 7" (JOINTED)

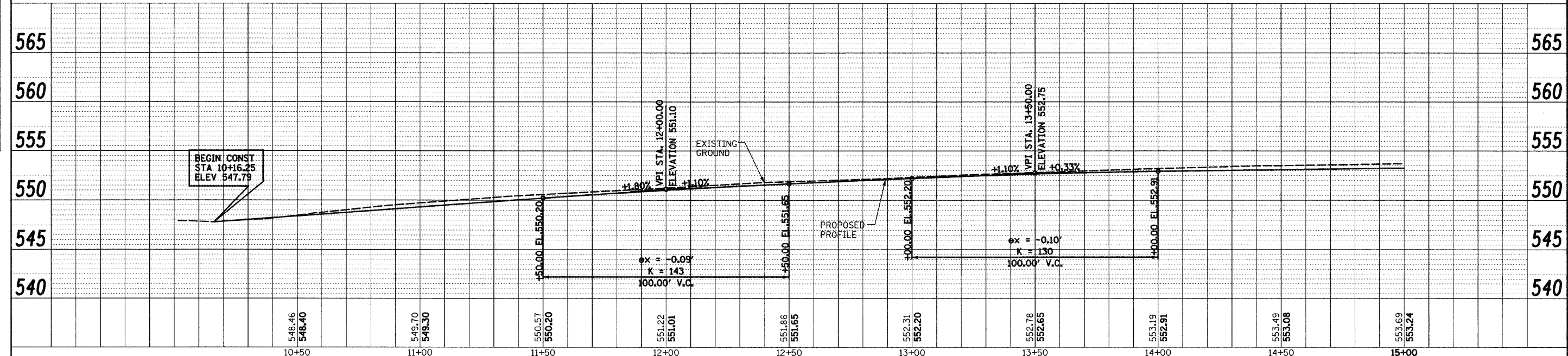
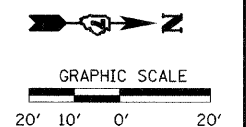
PLAN	REVIEWED	DATE
	PLOTTED	
	ALIGNED	
	CHECKED	
	NO.	
	NOTE BOOK	
	FILE NAME	

PROFILE	REVIEWED	DATE
	PLOTTED	
	GRADES	
	CHECKED	
	NO.	
	NOTE BOOK	
	STRUCTURE	
	NOTATIONS	

HURST-ROSCHKE ENGINEERS, INC.
 HILLSBORO, ILLINOIS 62049
 (217)532-3959 FAX (217)532-3212



BM #2 STA 10+56.29, 20.39' RT
 RR SPIKE IN EAST FACE OF POWER POLE
 LOCATED N.E. CORNER OF INTERSECTION
 OF COLES ST AND ST. LOUIS AVE.
 ELEVATION 550.04



FILE NAME =	USER NAME = #USER#	DESIGNED - JJC	REVISED -	STATE OF ILLINOIS DEPARTMENT OF TRANSPORTATION	ROADWAY PLAN & PROFILE		F.A.U. RTE. 8422	SECTION 09-00062-00-PV	COUNTY FAYETTE	TOTAL SHEETS 13	SHEET NO. 5	
#FILE#	PLOT SCALE = #SCALE#	DRAWN - UJJ	REVISED -		SCALE: 1:20	SHEET NO. 1 OF 3 SHEETS	STA. 10+00.00 TO STA. 15+00.00	CONTRACT NO. 95601				
	PLOT DATE = #DATE#	CHECKED - MAR	REVISED -		FED. ROAD DIST. NO. 7 (ILLINOIS) FED. AID PROJECT							
		DATE - 08-21-09	REVISED -									