

STATE OF ILLINOIS
DEPARTMENT OF TRANSPORTATION
DIVISION OF HIGHWAYS

PLANS FOR PROPOSED
FEDERAL AID HIGHWAY

CITY OF VANDALIA
COLES STREET (F.A.U. RTE. 8422)
JOB NO. C-97-104-09
FEDERAL PROJECT NO. ARA-M-5068(024)
CITY SECTION 09-00062-00-PV
FAYETTE COUNTY
RECONSTRUCTION OF COLES STREET FROM
ST. LOUIS AVE. TO CSX RR OVERPASS

F.A.U. RTE.	SECTION	COUNTY	TOTAL SHEETS	SHEET NO.
8422	09-00062-00-PV	FAYETTE	13	1
FED. ROAD DIST. NO. 7 ILLINOIS		FED. AID PROJECT		
CONTRACT NO.95601				

INDEX OF SHEETS

- 1 COVER SHEET
- 2 GENERAL NOTES AND SUMMARY OF QUANTITIES
- 3 TYPICAL SECTIONS
- 4 SCHEDULE OF QUANTITIES
- 5-7 PLAN AND PROFILE SHEETS
- 8-13 CROSS SECTION SHEETS

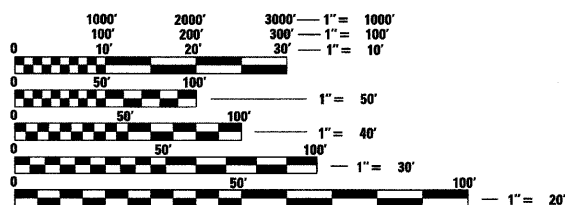
STANDARDS

000001-05	701311-03
001001-02	701501-05
001006	701901-01
420001-07	780001-02
606001-04	BLR 10-6

UTILITY OWNERS

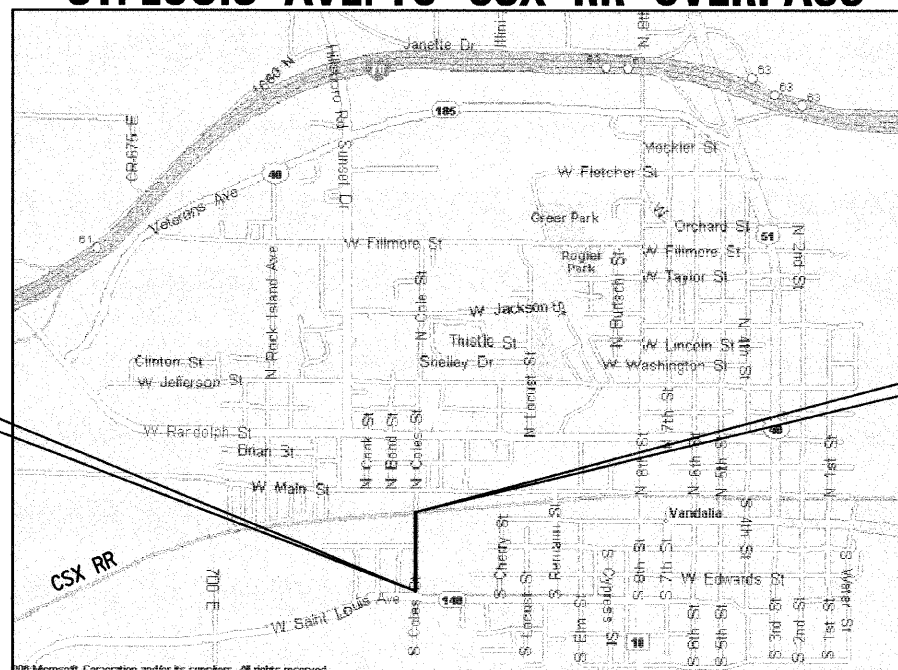
SEE SHEET 2 GENERAL NOTES

SCALES USED FOR
VARIOUS PLAN SHEETS



FULL SIZE PLANS HAVE BEEN PREPARED USING STANDARD ENGINEERING SCALES. REDUCED SIZED PLANS WILL NOT CONFORM TO STANDARD SCALES. IN MAKING MEASUREMENTS ON REDUCED PLANS, THE ABOVE SCALES MAY BE USED.

J.U.L.I.E.
JOINT UTILITY LOCATION INFORMATION FOR EXCAVATION
1-800-892-0123



BEGIN CONSTRUCTION
STA. 10+16.25

END CONSTRUCTION
STA. 22+07.00



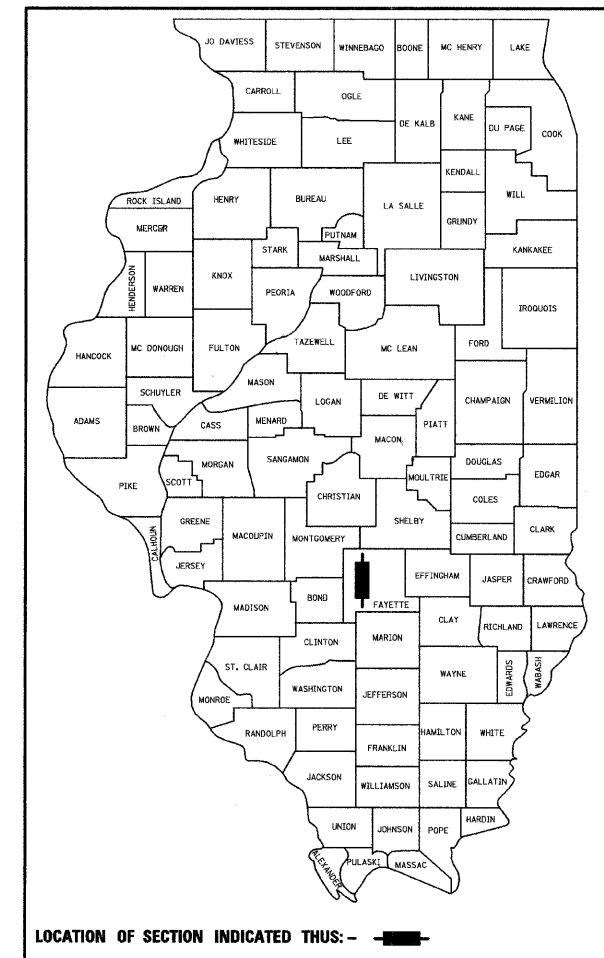
LOCATION MAP

TOTAL LENGTH OF SECTION 1190.75 FEET = 0.226 MILES



HURST-ROSCHÉ ENGINEERS, INC.
CONSULTING ENGINEERS
HILLSBORO, ILLINOIS

08-21-09
ILL PE 062-057938 JEREMY J. CONNOR DATE
LICENSE EXPIRES 11/30/2009



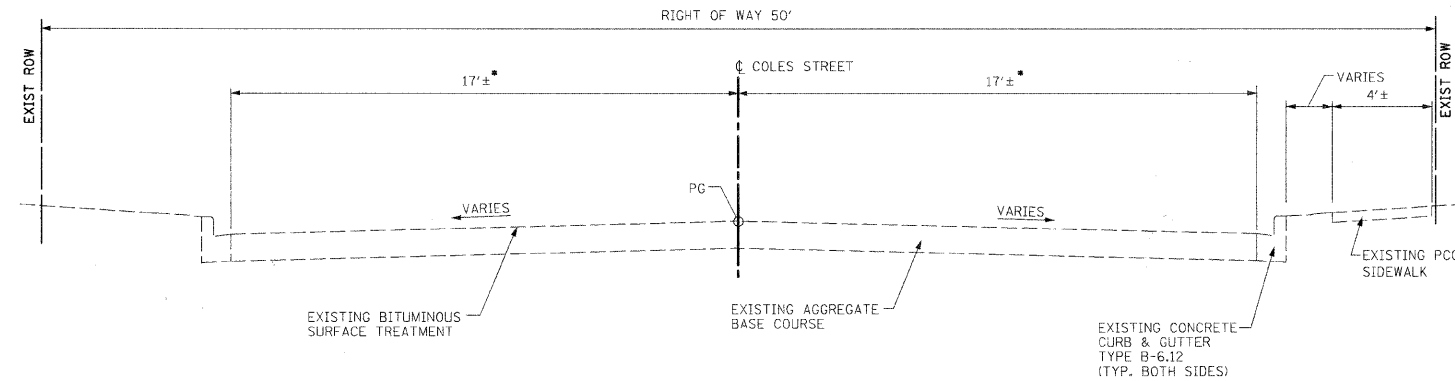
LOCATION OF SECTION INDICATED THUS: - [black rectangle] -

AGENCY RESPONSIBLE FOR LETTING

Approved 8-28-09 DATE
[Signature] MAYOR
Local Agency, Position

Passed 9-3-09 DATE
[Signature]
District 7 Engineer of Local Roads and Streets

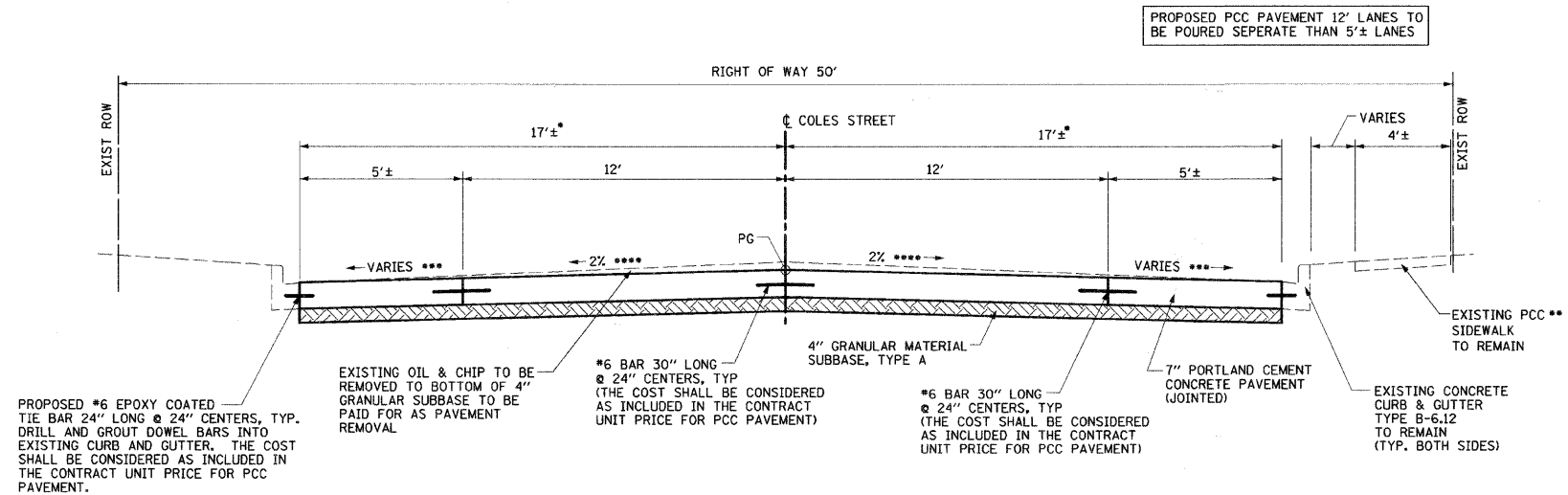
Releasing for Bid
Based on Limited
Review 9-3-09 DATE
[Signature]
Deputy Director of Highways, Region 4 Engineer



EXISTING TYPICAL ROADWAY SECTION
STA 10+16.25 TO STA 22+07.00

* PAVEMENT WIDTH VARIES FROM 17± TO 13± FROM STA 21+06.18 TO STA 21+59.44 AND 13± FROM STA 21+59.44 TO STA 22+07.00

SEE HIGHWAY STANDARD
B.L.R. 10-6 FOR FURTHER
JOINTING DETAILS



PROPOSED TYPICAL ROADWAY SECTION
STA 10+16.25 TO STA 22+07.00

* PAVEMENT WIDTH VARIES FROM 17± TO 13± FROM STA 21+06.18 TO STA 21+59.44 AND 13± FROM STA 21+59.44 TO STA 22+07.00
 ** PROPOSED 4" PCC SIDEWALK FROM STA 21+50.00 TO STA 22+07.00.
 *** SEE CROSS SECTIONS FOR VARIABLE CROSS SLOPES.
 **** CROSS SLOPE VARIES FROM 2.0% TO 3.1% FROM STA 21+00.00 TO STA 22+07.00.

HR
HURST-ROSCHKE ENGINEERS, INC.
HILLSBORO, ILLINOIS 62040
(217)552-3959 FAX (217)552-3212

HR
HURST-ROSCHKE ENGINEERS, INC.

FILE NAME = #FILEL#	USER NAME = #USER#	DESIGNED - JJC	REVISED -
		DRAWN - UJ	REVISED -
	PLOT SCALE = #SCALE#	CHECKED - MAR	REVISED -
	PLOT DATE = #DATE#	DATE - 08-21-09	REVISED -

STATE OF ILLINOIS
DEPARTMENT OF TRANSPORTATION

TYPICAL SECTIONS

SCALE: NTS SHEET NO. 1 OF 1 SHEETS STA. TO STA.

F.A.U. RTE.	SECTION	COUNTY	TOTAL SHEETS	SHEET NO.
8422	09-00062-00-PV	FAYETTE	13	3
CONTRACT NO. 95601				
FED. ROAD DIST. NO. 7 ILLINOIS FED. AID PROJECT				

SCHEDULE OF QUANTITIES

INLET AND PIPE PROTECTION			
Coles Street Station		Offset	EACH
10+32.61	Lt	19.0'	1
10+39.06	Rt	17.6'	1
11+78.78	Lt	18.0'	1
14+36.87	Rt	17.7'	1
14+37.34	Lt	17.8'	1
15+54.66	Lt	18.0'	1
17+02.82	Lt	18.0'	1
18+23.35	Rt	18.0'	1
18+36.61	Lt	18.0'	1
Total			9

SUB-BASE GRANULAR MATERIAL, TYPE A 4"			
Coles Street Sta		Sta	SQ YD
10+16.25	to	22+07.00	4490
Total			4490

PORTLAND CEMENT CONCRETE PAVEMENT 7" (JOINTED)			
Coles Street Sta		Sta	SQ YD
10+16.25	to	22+07.00	4490
Total			4490

PAINT PAVEMENT MARKING - LINE 4"			
Coles Street Sta		Sta	FOOT
10+16.25	to	22+07.00	298
Total			298

PAVEMENT REMOVAL			
Coles Street Sta		Sta	SQ YD
10+16.25	to	22+07.00	4490
Total			4490

WATER VALVES TO BE ADJUSTED			
Coles Street Station		Offset	EACH
10+18.45	Rt	5.8'	1
17+67.18	Lt	2.5'	1
18+85.72	Rt	13.4'	1
Total			3

PAINT PAVEMENT MARKING - LINE 12"			
Coles Street Sta		Sta	FOOT
10+30.00			20
Total			20

PORTLAND CEMENT CONCRETE SIDEWALK 4 INCH			
Coles Street Sta		Sta	SQ FT
21+50.00	to	22+07.00	257
Total			257

MANHOLES TO BE ADJUSTED			
Coles Street Station		Offset	EACH
10+15.92	Lt	1.0'	1
14+36.39	Rt	0.7'	1
18+36.05	Rt	3.3'	1
Total			3

COMBINATION CONCRETE CURB AND GUTTER REMOVAL AND REPLACEMENT			
Coles Street Sta		Sta	FOOT
21+50.00	to	22+07.00	57
Estimate of Curb Replacement			100
Total			157

PROTECTIVE COAT		SQ YD
PORTLAND CEMENT CONCRETE PAVEMENT 7" (JOINTED)		4490
COMBINATION CONCRETE CURB AND GUTTER REMOVAL AND REPLACEMENT		35
PORTLAND CEMENT CONCRETE SIDEWALK 4 INCH		29
Total		4554

HR
 HURST-ROSCHE ENGINEERS, INC.
 HILLSBORO, ILLINOIS 62049
 (217)532-3939 FAX (217)532-3212



FILE NAME =	USER NAME = #USER#	DESIGNED - JJC	REVISED -	STATE OF ILLINOIS DEPARTMENT OF TRANSPORTATION	SCHEDULE OF QUANTITIES	F.A.U. RTE. 8422	SECTION 09-00062-00-PV	COUNTY FAYETTE	TOTAL SHEETS 13	SHEET NO. 4
#FILE#		DRAWN - UJJ	REVISED -			SCALE: NTS SHEET NO. OF SHEETS STA. TO STA.		CONTRACT NO. 95601		
PLOT SCALE = #SCALE#		CHECKED - MAR	REVISED -			FED. ROAD DIST. NO. 7 ILLINOIS FED. AID PROJECT				
PLOT DATE = #DATE#		DATE - 08-21-09	REVISED -							

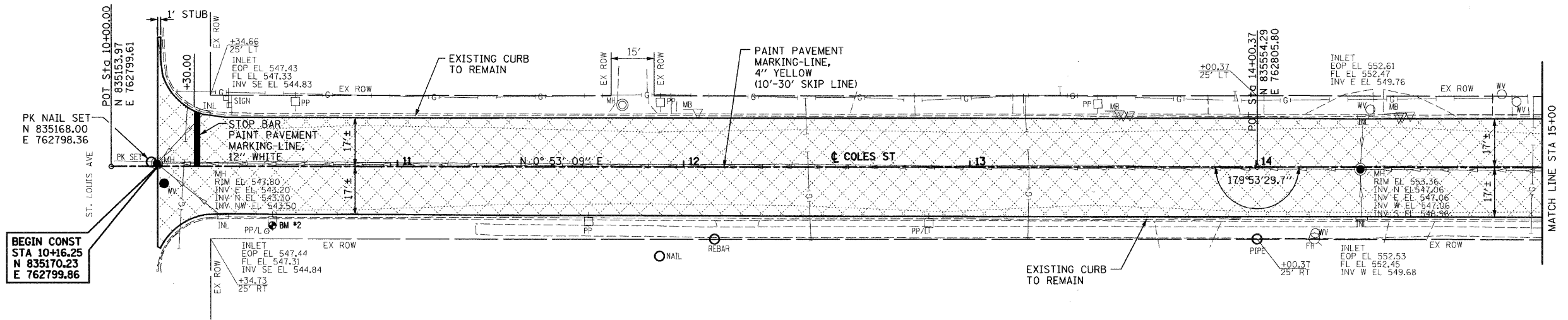
LEGEND

- MANHOLE TO BE ADJUSTED
- WV WATER VALVE TO BE ADJUSTED
- ▨ PCC PAVEMENT, 7" (JOINTED)

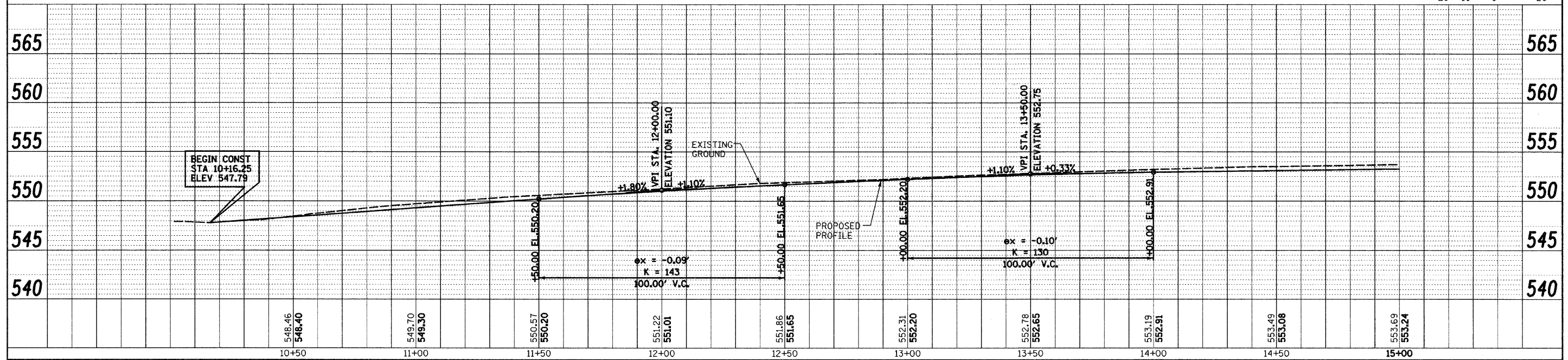
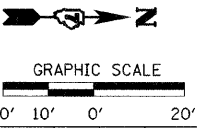
PLAN	REVISIONS	DATE
NO.	NO.	
NO.	NO.	
NO.	NO.	
NO.	NO.	
NO.	NO.	
NO.	NO.	
NO.	NO.	
NO.	NO.	
NO.	NO.	

PROFILE	REVISIONS	DATE
NO.	NO.	
NO.	NO.	
NO.	NO.	
NO.	NO.	
NO.	NO.	
NO.	NO.	
NO.	NO.	
NO.	NO.	
NO.	NO.	

HURST-ROSCHKE ENGINEERS, INC.
 HILLSBORO, ILLINOIS 62049
 (217)532-3959 FAX (217)532-3212



BM #2 STA 10+56.29, 20.39' RT
 RR SPIKE IN EAST FACE OF POWER POLE
 LOCATED N.E. CORNER OF INTERSECTION
 OF COLES ST AND ST. LOUIS AVE.
 ELEVATION 550.04



FILE NAME =	USER NAME = #USER#	DESIGNED - JJC	REVISED -	STATE OF ILLINOIS DEPARTMENT OF TRANSPORTATION	ROADWAY PLAN & PROFILE	F.A.U. RTE. 8422	SECTION 09-00062-00-PV	COUNTY FAYETTE	TOTAL SHEETS 13	SHEET NO. 5	
#FILE#	PLOT SCALE = #SCALE#	DRAWN - UJJ	REVISED -			SCALE: 1:20		SHEET NO. 1 OF 3 SHEETS		STA. 10+00.00 TO STA. 15+00.00	
	PLOT DATE = #DATE#	CHECKED - MAR	REVISED -			CONTRACT NO. 95601					
		DATE - 08-21-09	REVISED -			FED. ROAD DIST. NO. 7 (ILLINOIS) FED. AID PROJECT					

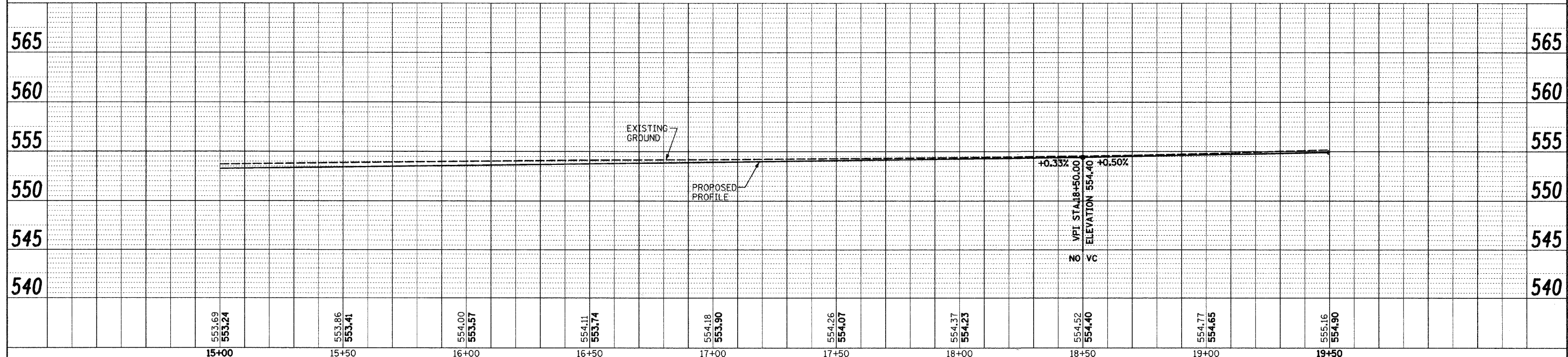
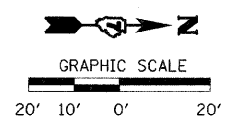
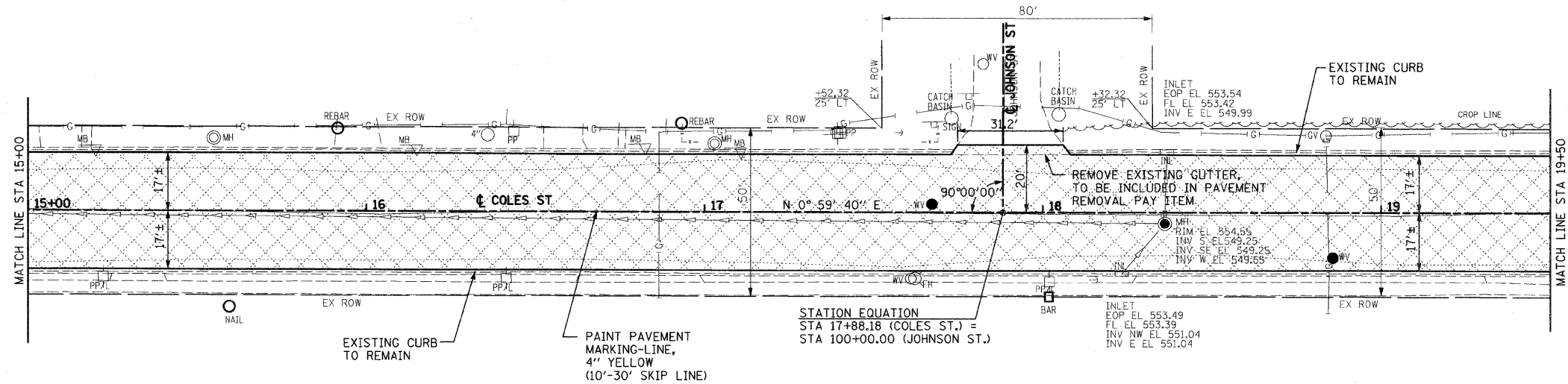
LEGEND

- MANHOLE TO BE ADJUSTED
- ^{WV} WATER VALVE TO BE ADJUSTED
- ▨ PCC PAVEMENT, 7" (JOINTED)

PLAN	DESIGNED	DATE
NOTE BOOK	BY	
NO.	CHECKED	
	DATE	
	FILE NAME	

PROFILE	DESIGNED	DATE
NOTE BOOK	BY	
NO.	CHECKED	
	DATE	
	FILE NAME	

HURST-ROSCHE ENGINEERS, INC.
 HILLSBORO, ILLINOIS 62449
 (217)532-3959 FAX (217)532-3212



FILE NAME =	USER NAME = #USER#	DESIGNED - JJC	REVISED -	STATE OF ILLINOIS DEPARTMENT OF TRANSPORTATION	ROADWAY PLAN & PROFILE	F.A.U. RTE.	SECTION	COUNTY	TOTAL SHEETS	SHEET NO.	
#FILE#		DRAWN - UJJ	REVISED -			8422	09-00062-00-PV	FAYETTE	13	6	
PLOT SCALE = #SCALE#		CHECKED - MAR	REVISED -			CONTRACT NO. 95601					
PLOT DATE = #DATE#		DATE - 08-21-09	REVISED -			FED. ROAD DIST. NO. 7 (ILLINOIS) FED. AID PROJECT					

C:\Users\lucy11\OneDrive\... 8/20/2009 1:42:56 PM

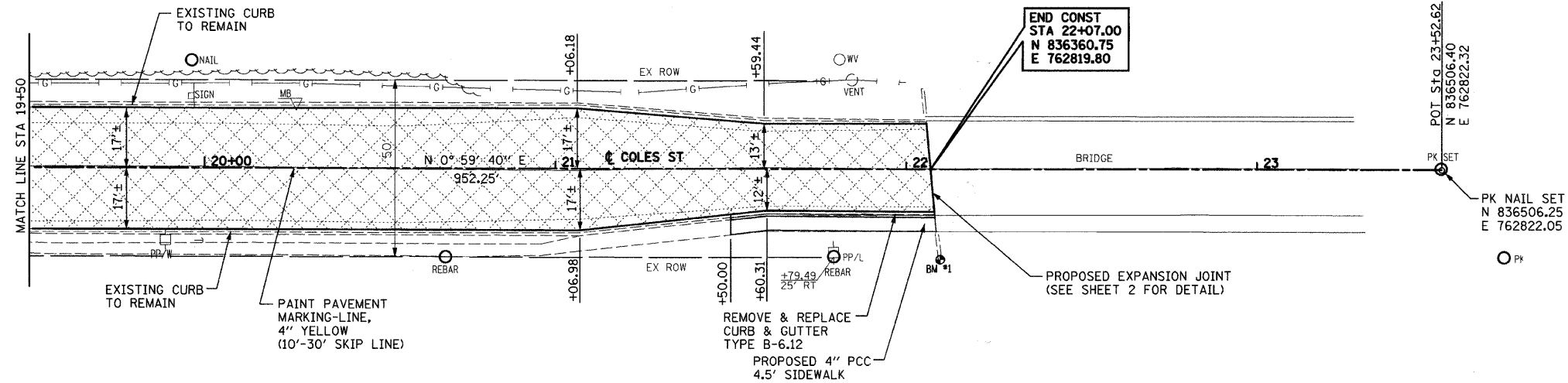
LEGEND

 PCC PAVEMENT, 7" (JOINTED)

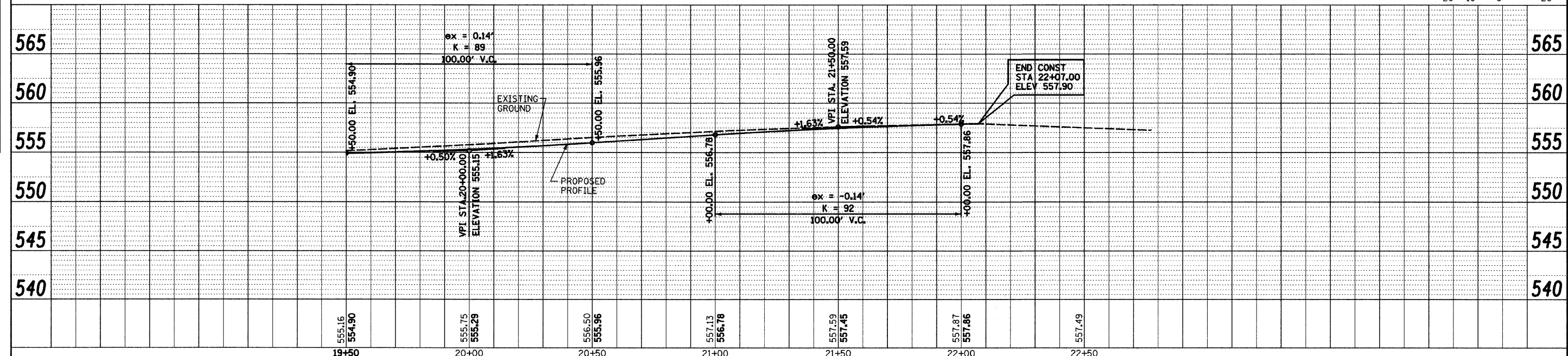
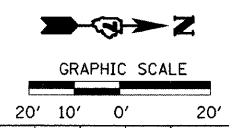
PLAN	REVISIONS	DATE
NO.	PLOTTED	
	ALIGNED	
	CHECKED	
	DATE FILE NAME	

PROFILE	REVISIONS	DATE
NO.	PLOTTED	
	GRADES	
	CHECKED	
	STRUCTURE	
	NOTATIONS	
	CPAD	

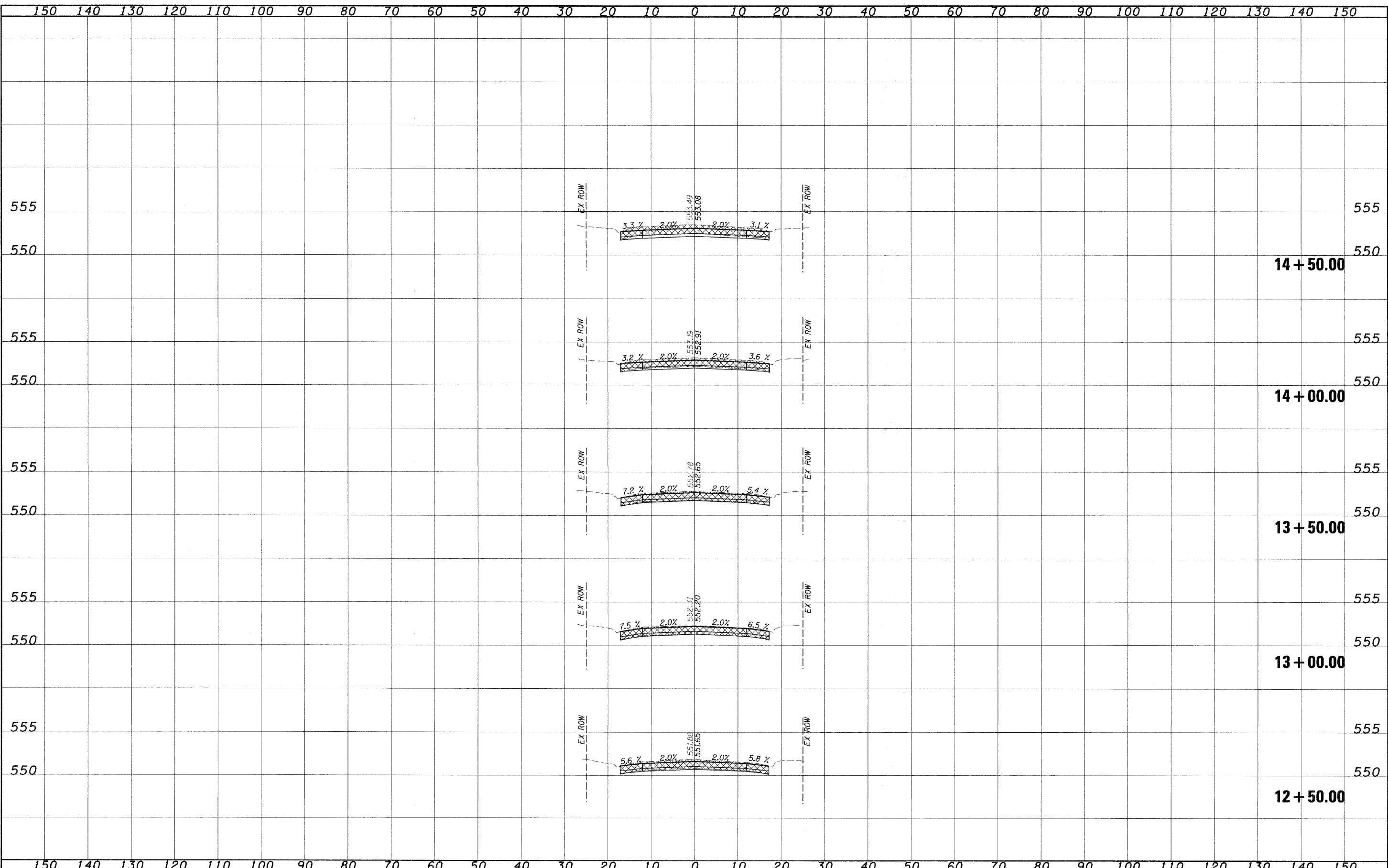
HURST-ROSCHE ENGINEERS, INC.
HILLSBORO, ILLINOIS 62049
(217)532-3989 FAX (217)532-3212



BM #1 STA 22+09.69, 25.52' RT
SQUARE CUT ON TOP OF S.E. WINGWALL
OF BRIDGE ON COLES ST.
ELEVATION 558.15



FILE NAME =	USER NAME = #USER#	DESIGNED - JJC	REVISED -	STATE OF ILLINOIS DEPARTMENT OF TRANSPORTATION	ROADWAY PLAN & PROFILE		F.A.J. RTE.	SECTION	COUNTY	TOTAL SHEETS	SHEET NO.
#FILEL#		DRAWN - UJJ	REVISED -		8422	09-00062-00-PV	FAYETTE	13	7		
	PLOT SCALE = #SCALE#	CHECKED - MAR	REVISED -		SCALE: 1:20		SHEET NO. 3 OF 3 SHEETS		STA. 19+50.00 TO STA. 23+52.62	CONTRACT NO. 95601	
	PLOT DATE = #DATE#	DATE - 08-21-09	REVISED -				FED. ROAD DIST. NO. 7 ILLINOIS FED. AID PROJECT				



DATE _____
 BY _____
 ORIGINAL SURVEY _____
 SURVEY _____
 NOTE BOOK _____
 NO. _____
 AREAS CHECKED _____

DATE _____
 BY _____
 ORIGINAL SURVEY _____
 SURVEY _____
 NOTE BOOK _____
 NO. _____
 AREAS CHECKED _____

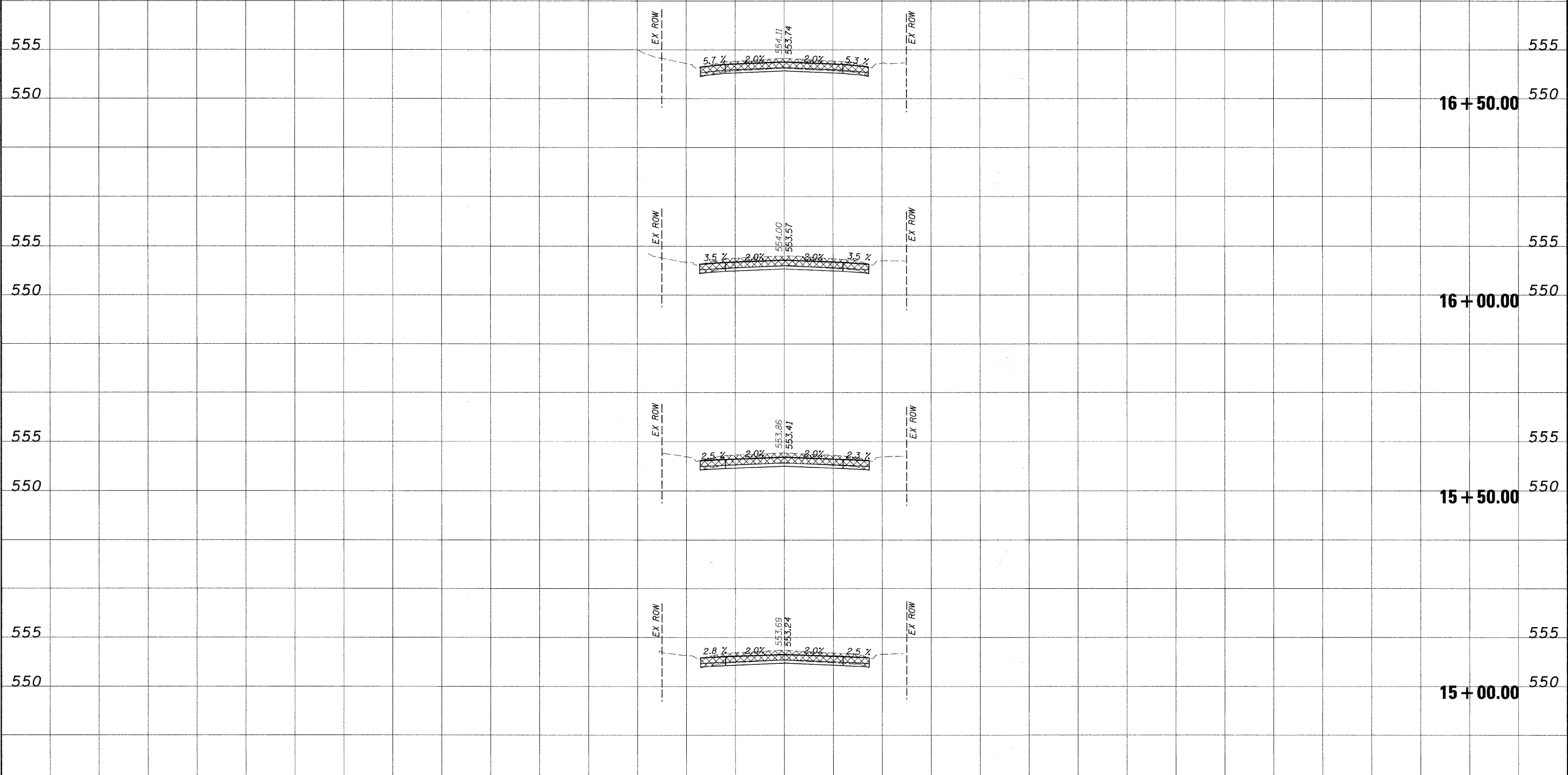
FILE NAME =	USER NAME = #USER#	DESIGNED - JJC	REVISED -	STATE OF ILLINOIS DEPARTMENT OF TRANSPORTATION	CROSS SECTIONS COLES STREET, VANDALIA			F.A.U. RTE.	SECTION	COUNTY	TOTAL SHEETS	SHEET NO.
#FILE#		DRAWN - UJ	REVISED -		8422	09-00062-00-PV	FAYETTE	13	9			
		CHECKED - MAR	REVISED -		SCALE: 1/10"=1/5'			SHEET NO. 2 OF 6 SHEETS		STA. 12+50.00 TO STA. 14+50.00	CONTRACT NO. 95601	
		DATE - 08-21-09	REVISED -		ILLINOIS FED. AID PROJECT							

Vandalia_Visual_Cross_Sect.dwg 07/20/2009 1:36:18 PM

150 140 130 120 110 100 90 80 70 60 50 40 30 20 10 0 10 20 30 40 50 60 70 80 90 100 110 120 130 140 150

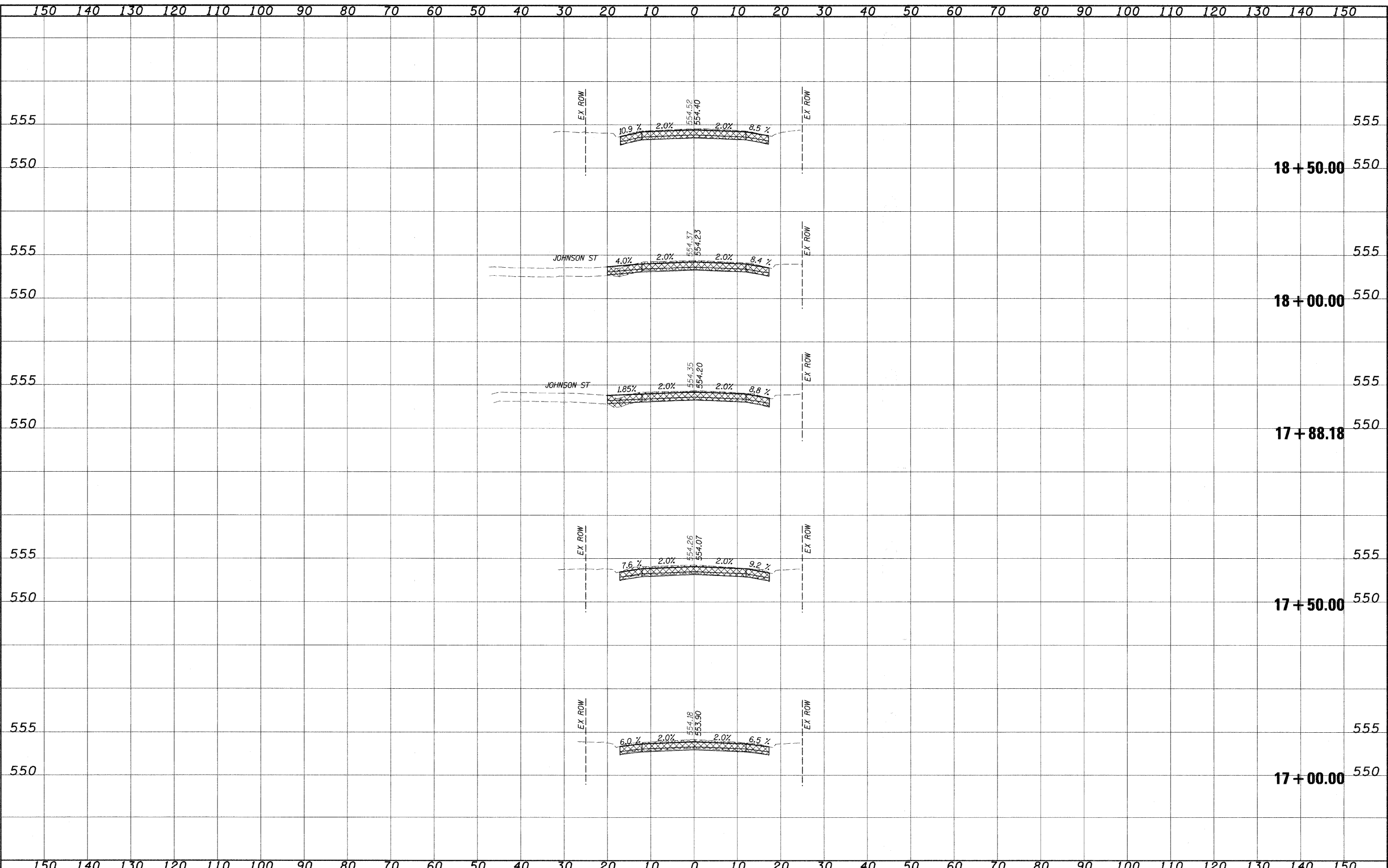
DATE	
BY	
DESIGNED	
DRAWN	
CHECKED	
DATE	

DATE	
BY	
DESIGNED	
DRAWN	
CHECKED	
DATE	



150 140 130 120 110 100 90 80 70 60 50 40 30 20 10 0 10 20 30 40 50 60 70 80 90 100 110 120 130 140 150

FILE NAME =	USER NAME = #USER#	DESIGNED - JJC	REVISED -	STATE OF ILLINOIS DEPARTMENT OF TRANSPORTATION	CROSS SECTIONS COLES STREET, VANDALIA		F.A.U. RTE.	SECTION	COUNTY	TOTAL SHEETS	SHEET NO.	
#FILE#		DRAWN - UJ	REVISED -		8422	09-00062-00-PV	FAYETTE	13	10			
PLOT SCALE = #SCALE#		CHECKED - MAR	REVISED -		SCALE: 1:10/1:5		SHEET NO. 3 OF 6 SHEETS		STA. 15+00.00 TO STA. 16+50.00	CONTRACT NO. 95601		
PLOT DATE = #DATE#		DATE - 08-21-09	REVISED -		ILLINOIS FED. AID PROJECT							



DATE	
BY	
ORIGINAL SURVEY	
DESIGNED	
PLOTTED	
TEMPLATE	
AREAS CHECKED	
NO.	

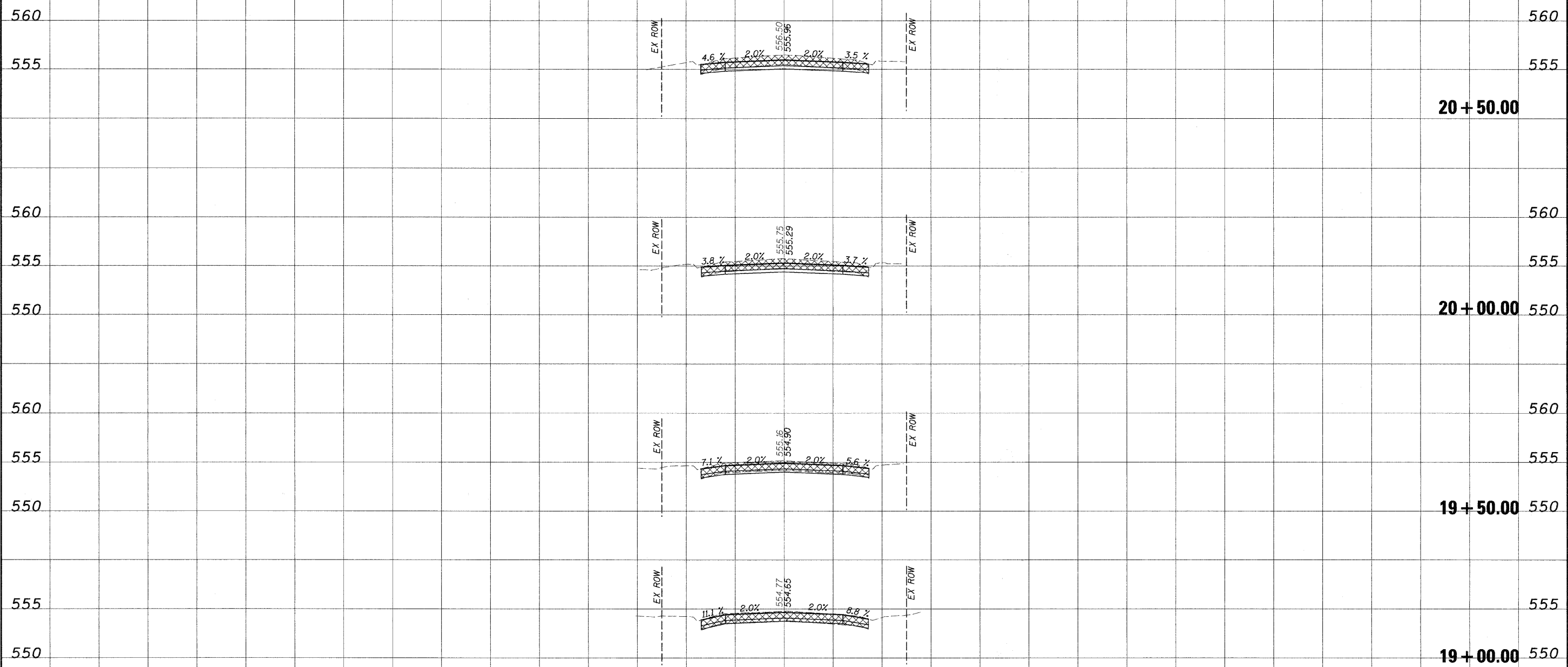
DATE	
BY	
ORIGINAL SURVEY	
DESIGNED	
PLOTTED	
TEMPLATE	
AREAS CHECKED	
NO.	

FILE NAME =	USER NAME = *USER*	DESIGNED - JJC	REVISED -	STATE OF ILLINOIS DEPARTMENT OF TRANSPORTATION	CROSS SECTIONS COLES STREET, VANDALIA		F.A.U. RTE. 8422	SECTION 09-00062-00-PV	COUNTY FAYETTE	TOTAL SHEETS 13	SHEET NO. 11
#FILE#	PLOT SCALE = *SCALE*	DRAWN - UJ	REVISED -		SCALE: 1/10/1/5	SHEET NO. 4 OF 6 SHEETS	STA. 17+00.00 TO STA. 18+50.00	CONTRACT NO. 95601		ILLINOIS FED. AID PROJECT	
	PLOT DATE = *DATE*	CHECKED - MAR	REVISED -								
		DATE - 08-21-09	REVISED -								

150 140 130 120 110 100 90 80 70 60 50 40 30 20 10 0 10 20 30 40 50 60 70 80 90 100 110 120 130 140 150

DATE	
BY	
DESIGNED	
DRAWN	
CHECKED	
DATE	
REVISIONS	
NO.	

DATE	
BY	
DESIGNED	
DRAWN	
CHECKED	
DATE	
REVISIONS	
NO.	



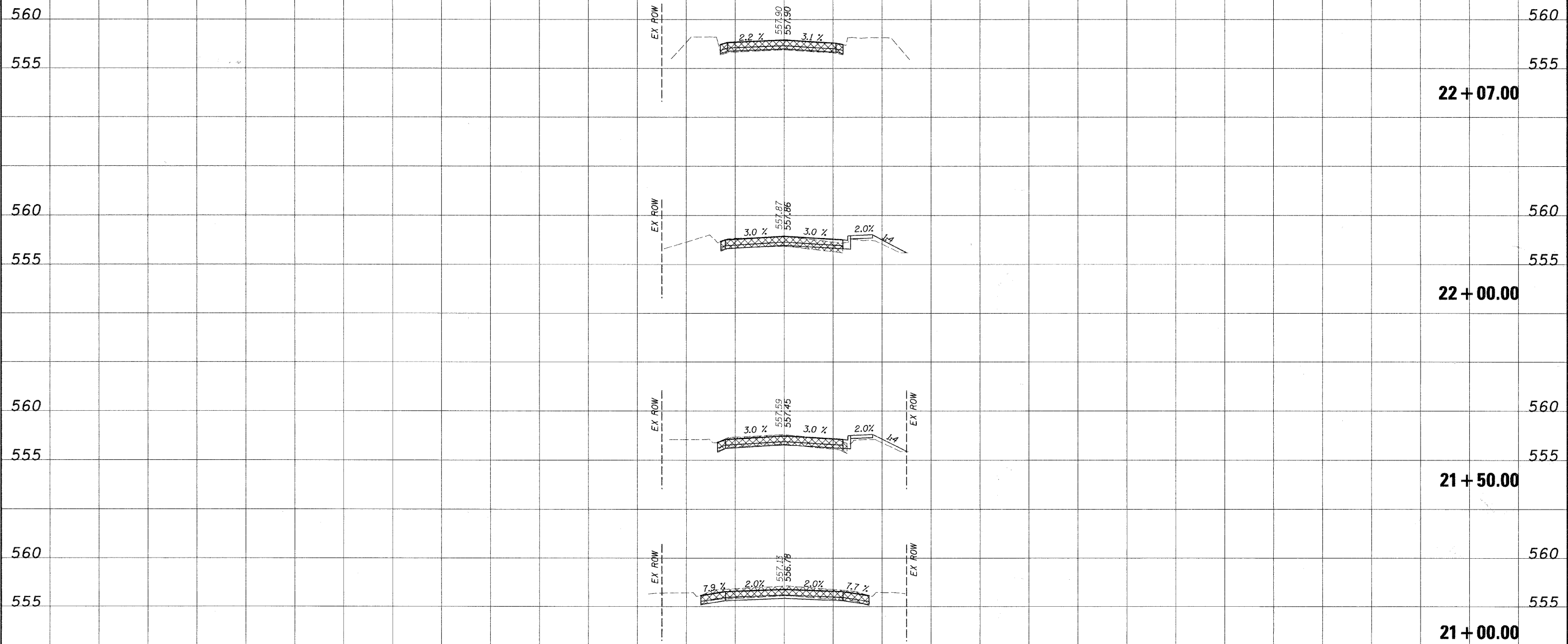
150 140 130 120 110 100 90 80 70 60 50 40 30 20 10 0 10 20 30 40 50 60 70 80 90 100 110 120 130 140 150

FILE NAME =	USER NAME = #USER#	DESIGNED - JJC	REVISED -	STATE OF ILLINOIS DEPARTMENT OF TRANSPORTATION	CROSS SECTIONS COLES STREET, VANDALIA			F.A.U. RTE. 8422	SECTION 09-00062-00-PV	COUNTY FAYETTE	TOTAL SHEETS 13	SHEET NO. 12	
#FILE#		DRAWN - UJ	REVISED -		SCALE: 1:10/1:5	SHEET NO. 5 OF 6 SHEETS	STA. 19+00.00 TO STA. 20+50.00	ILLINOIS FED. AID PROJECT					
		CHECKED - MAR	REVISED -										
		DATE - 08-21-09	REVISED -										

150 140 130 120 110 100 90 80 70 60 50 40 30 20 10 0 10 20 30 40 50 60 70 80 90 100 110 120 130 140 150

DATE	
BY	
FINAL SURVEY	
REVISIONS	
NOTED	
PLATE	
NO.	
AREAS CHECKED	

DATE	
BY	
ORIGINAL SURVEY	
REVISIONS	
NOTED	
PLATE	
NO.	
AREAS CHECKED	



150 140 130 120 110 100 90 80 70 60 50 40 30 20 10 0 10 20 30 40 50 60 70 80 90 100 110 120 130 140 150

FILE NAME =	USER NAME = *USER*	DESIGNED - JJC	REVISED -	STATE OF ILLINOIS DEPARTMENT OF TRANSPORTATION	CROSS SECTIONS COLES STREET, VANDALIA		F.A.U. RTE.	SECTION	COUNTY	TOTAL SHEETS	SHEET NO.
FILE#		DRAWN - UJ	REVISED -		8422	09-00062-00-PV	FAYETTE	13	13		
		CHECKED - MAR	REVISED -		CONTRACT NO. 95601						
		DATE - 08-21-09	REVISED -		SCALE: 1/4"=1'-0"	SHEET NO. 6 OF 6 SHEETS	STA. 21+00.00 TO STA. 22+07.00	ILLINOIS FED. AID PROJECT			

C:\pwork\csc\csc_0116.dgn 8/27/2009 1:35:02 PM