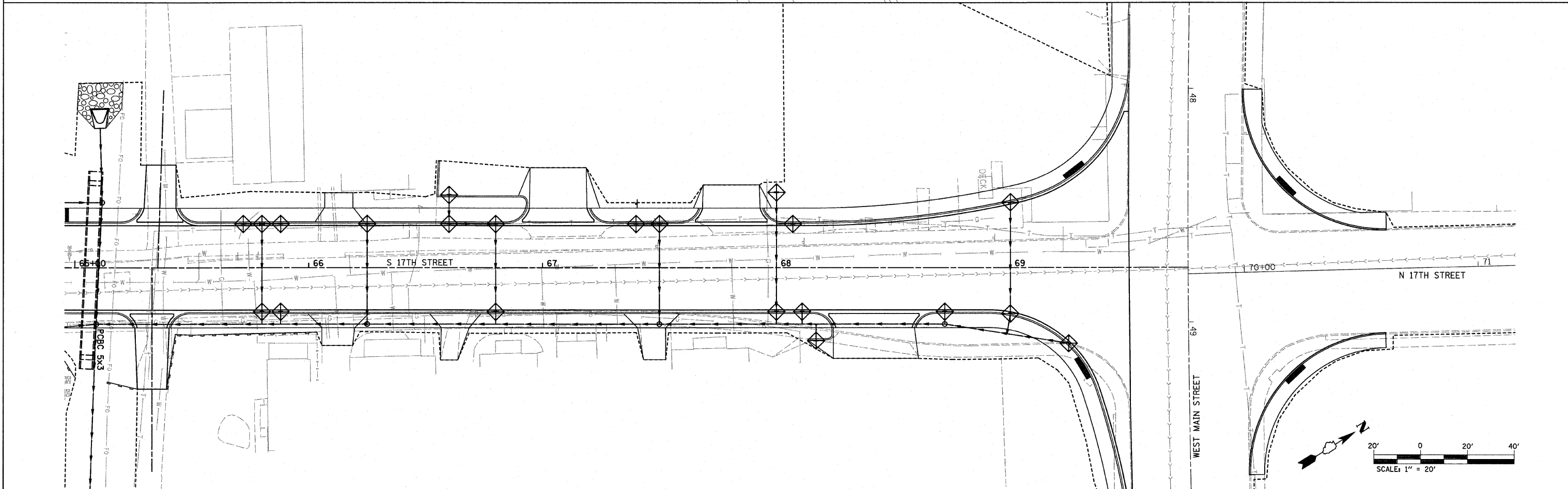
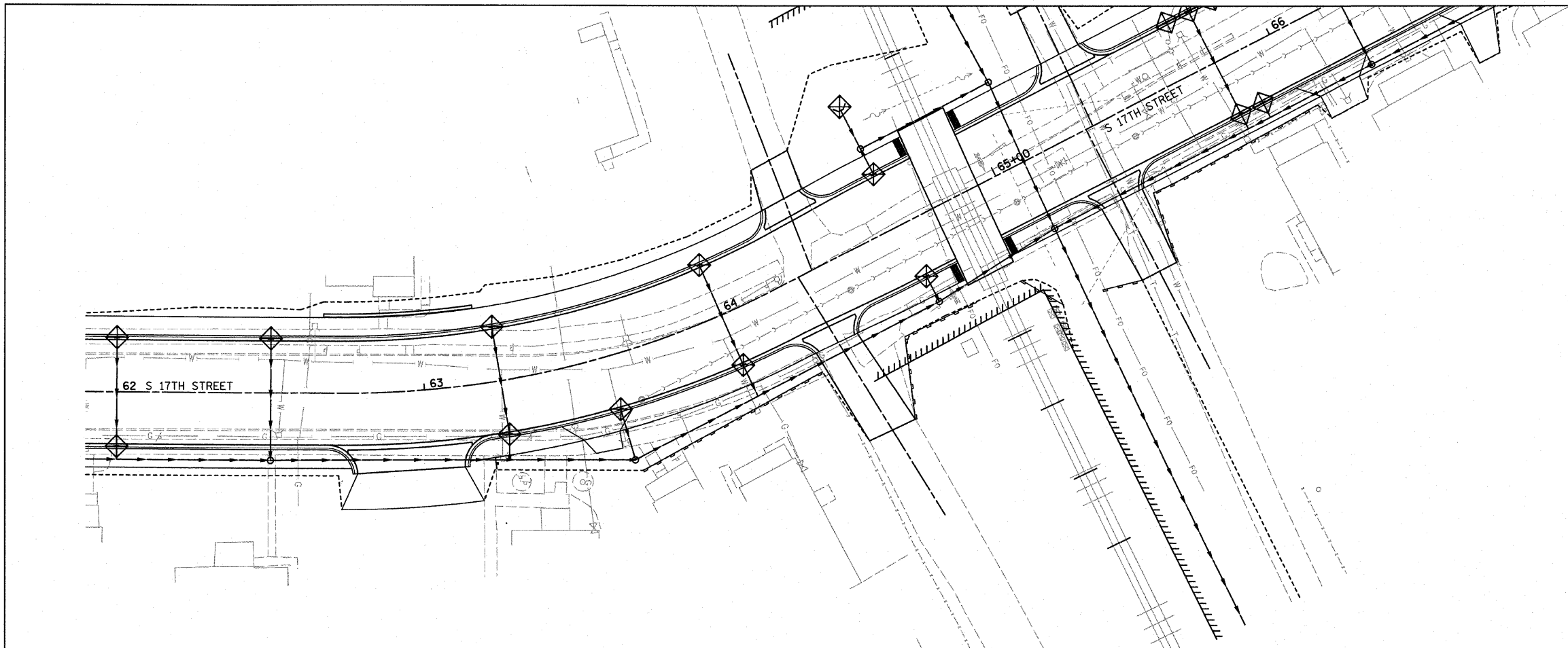


F.A. RTE.	SECTION	COUNTY	TOTAL SHEETS	SHEET NO.
9167	05-00207-00-PV	ST. CLAIR	89	20
STA.		TO STA.		
FED. ROAD DIST. NO.		ILLINOIS FED. AID PROJECT		

EROSION CONTROL SCHEDULE

STATION	STATION	TEMP EROS CONTR SEED 28000250 (POUND)	PERIMETER EROS BAR 28000400 (FOOT)	INLET & PIPE PROTECTION 28000500 (EACH)
17TH STREET				
50+86.31	52+46.77	10	218	6
52+46.77	54+49.71	5		8
54+49.71	58+94.93	8	113	14
58+94.93	64+85.01	5	67	21
64+85.01	69+75.99	31	205	24
IL ROUTE 13				
90+38.00	92+84.32	3	329	1
92+84.32	96+26.69	3	428	11
96+26.69	100+03.78	21	271	4
100+03.78	102+02.00	5	175	
TOTAL		91	1,805	89



PLOT DATE = 9/2/2009
 FILE NAME = H:\V\246942\Nurcastation\8\wppp02.dgn
 PLOT SCALE = 20.00000 / IN.