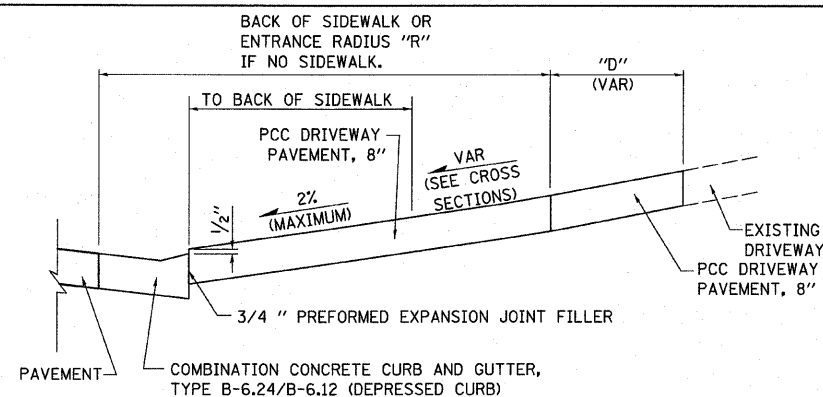
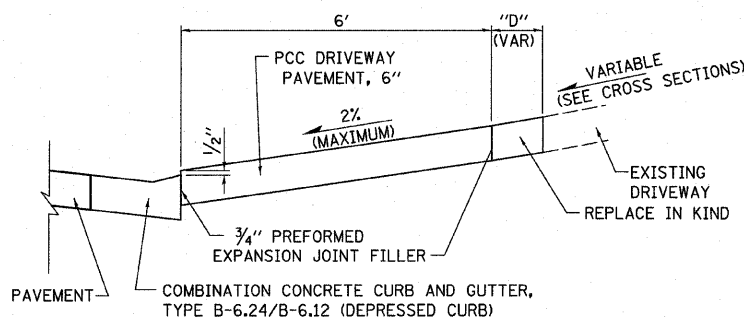


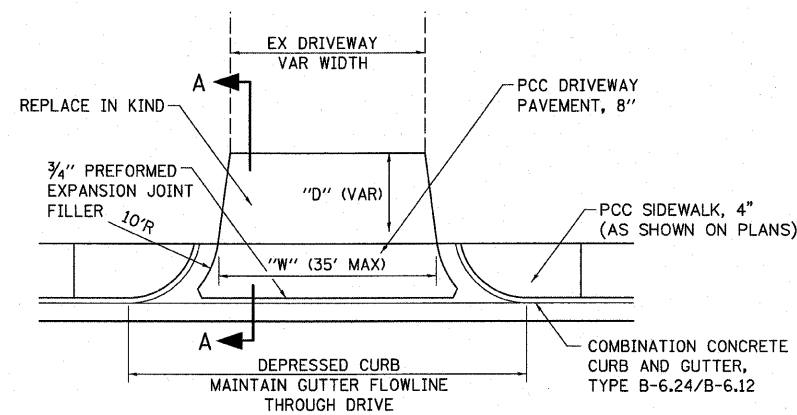
F.A.U. RTE.	SECTION	COUNTY	TOTAL SHEETS	SHEET NO.
9167	05-00207-00-PV	ST. CLAIR	89	46
STA.		TO STA.		
FED. ROAD DIST. NO.		ILLINOIS FED. AID PROJECT		



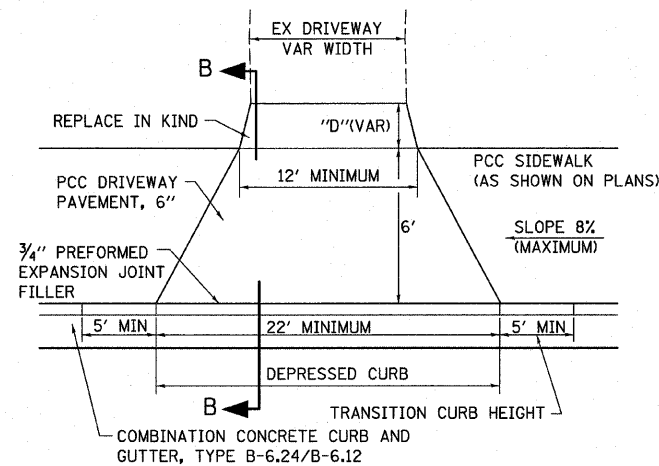
SECTION A-A
(NOT TO SCALE)



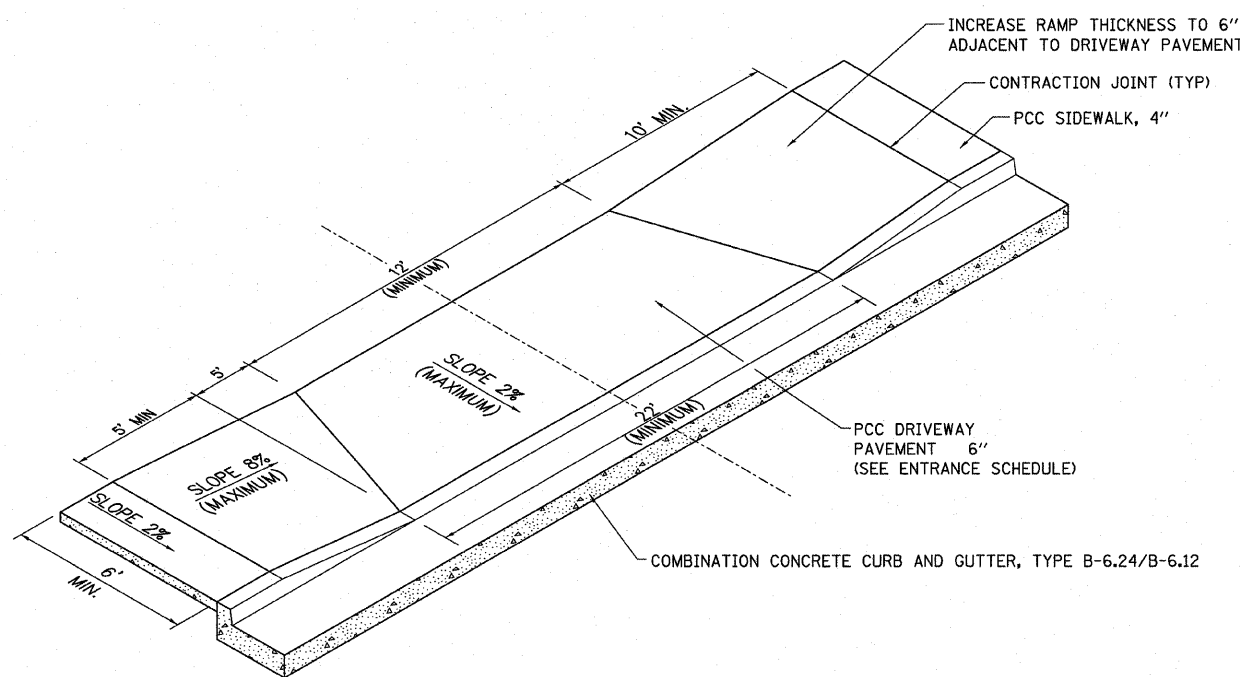
SECTION B-B
(NOT TO SCALE)



TYPICAL COMMERCIAL ENTRANCE DETAIL
(NOT TO SCALE)



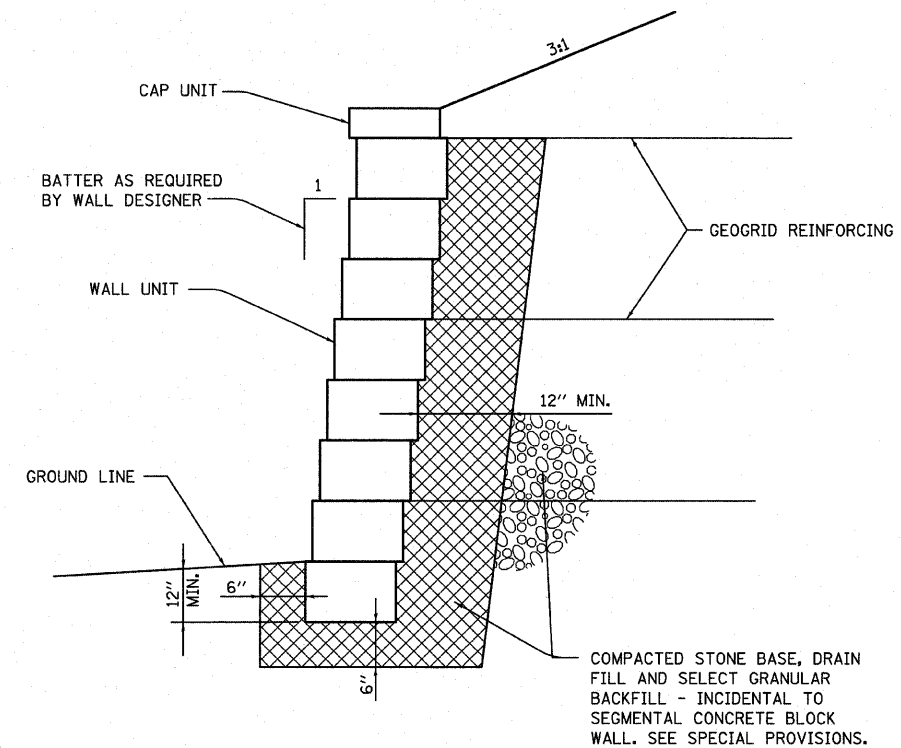
TYPICAL PRIVATE ENTRANCE DETAIL
(NOT TO SCALE)



NOTE:

WHERE ROOF DRAINS INTERSECT THE PROPOSED SEGMENTAL CONCRETE BLOCK RETAINING WALL, PROVIDE AN OPENING IN THE WALL TO PERMIT THE DRAIN TO OUTLET ON THE DOWNSIDE OF THE WALL. THE OPENING SHALL NOT BE MORE THAN 6 INCHES FROM THE GROUND LINE AT THE FOOT OF THE WALL. ANY MATERIALS NEEDED TO ADJUST THE ELEVATION OF AN EXISTING ROOF DRAIN TO OUTLET THROUGH THE PROPOSED WALL WILL NOT BE PAID FOR SEPARATELY, BUT SHALL BE CONSIDERED INCIDENTAL TO SEGMENTAL CONCRETE BLOCK WALL.

QUANTITIES SHOWN SHALL BE VERIFIED BY WALL DESIGNER. ACTUAL MEASUREMENTS AND PAYMENT SHALL BE IN ACCORDANCE WITH SPECIAL PROVISIONS.



REMOVE EXISTING BANK AS NECESSARY TO INSTALL REINFORCING GEOGRID. COMPACT SOILS OVER GEOGRID PER MANUFACTURER'S RECOMMENDATION - INCIDENTAL TO SEGMENTAL CONCRETE BLOCK WALL.

SEGMENTAL CONCRETE BLOCK WALL CONSTRUCTION DETAIL
(NOT TO SCALE)

PLOT DATE = 9/2/2009
FILE NAME = H:\P\24842\Microstation\9\detail.dgn
PLOT SCALE = 28.0000 / 1" = 10'-0"
USER NAME = kcm