

STATE OF ILLINOIS
DEPARTMENT OF TRANSPORTATION
DIVISION OF HIGHWAYS
**PROPOSED
HIGHWAY PLANS**

F.A.U. ROUTE 9100
GRANITE CITY
SECTION 09-00190-00-RS
PROJECT NO. ARA-5011(274)
MADISON COUNTY
JOB NO. C-98-352-09

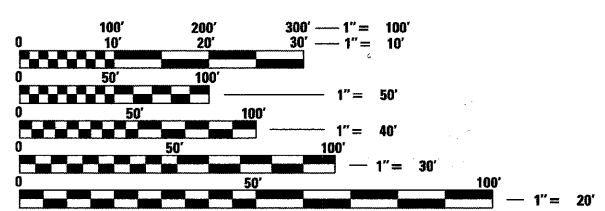
F.A.U. RTE.	SECTION	COUNTY	TOTAL SHEETS	SHEET NO.
9080	09-00190-00-RS	MADISON	20	1
FED. ROAD DIST. NO.	ILLINOIS	CONTRACT NO. 97401		

INDEX OF SHEETS

SHEET NUMBER	DESCRIPTION
1	COVER SHEET
2	INDEX OF SHEETS, HIGHWAY STANDARDS, GENERAL NOTES, AND LEGEND
3	SUMMARY OF QUANTITIES
4	TYPICAL SECTIONS - EXISTING
5	TYPICAL SECTIONS - PROPOSED
6-9	QUANTITY SCHEDULES
10-11	MAINTENANCE OF TRAFFIC - ADVANCED WARNING SIGNS & STAGES OF CONSTRUCTION
12-16	PLAN AND PROFILE SHEETS
17-19	PAVEMENT MARKING SHEETS
20	MISCELLANEOUS DETAIL SHEETS

STANDARDS

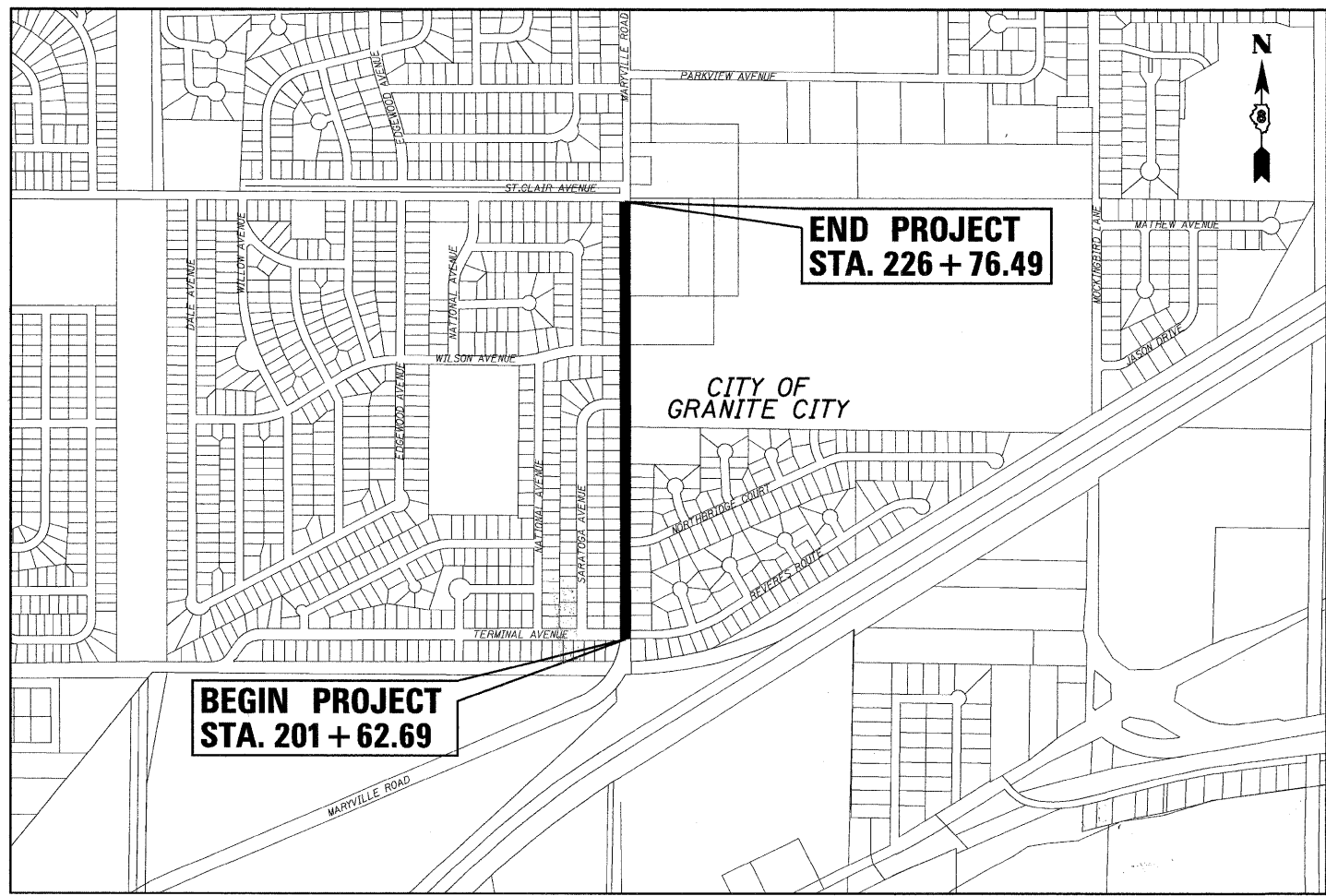
STD. NO.
000001-05
001001-02
001006
420701-02
424001-05
442101-07
606001-04
701301-03
701311-03
701606-06
701801-04
701901-01
780001-02



FULL SIZE PLANS HAVE BEEN PREPARED USING STANDARD ENGINEERING SCALES. REDUCED SIZED PLANS WILL NOT CONFORM TO STANDARD SCALES. IN MAKING MEASUREMENTS ON REDUCED PLANS, THE ABOVE SCALES MAY BE USED.

J.U.L.I.E.
JOINT UTILITY LOCATION INFORMATION FOR EXCAVATION
1-800-892-0123
OR 811

DESIGN DESIGNATION
FUNCTIONAL CLASSIFICATION: MINOR ARTERIAL
ADT: 5600 (2009) 7280 (2029)
DHV (2009): 560
DESIGN SPEED: 30 MPH



LOCATION MAP

SCALE: 1" = 500'

NET LENGTH OF PROJECT: 2513.8 LIN. FT. = 0.476 MILES
SECTION 16, T. 3 N., R. 9 W., 3RD P.M.



LOCATION OF SECTION INDICATED THIS: - [black rectangle] -

STATE OF ILLINOIS, DEPARTMENT OF TRANSPORTATION

Approved: 9-4-09
Ed Wagner
City of Granite City, Board President

Passed: 9/10/09
[Signature]
District 8 Engineer of Local Roads & Streets

Releasing for Bid Based on Limited Review: 9/10/09
[Signature]
Deputy Director of Highways, Region 5 Engineer



Brian F. Kulick 9/10/09
BRIAN F. KULICK, P.E. No. 49936 DATE
Job No. E090203

Expires 11-30-09

Juneau Associates, Inc. P.C.
CONSULTING ENGINEERS AND LAND SURVEYORS
2100 State Street, P.O. Box 1325
Granite City, Illinois 62040
Phone: (618) 877-1400 / (618) 452-5535
Fax: (618) 452-5541
100 North Research Drive
Edwardsville, Illinois 62025
Phone: (618) 659-0900 / (618) 659-0800
Fax: (618) 659-0941

LEGEND

	EVERGREEN (5" DIA)		FOUND CONCRETE MONUMENT		WATER LINE
	DECIDUOUS (8" DIA)		WATER METER		GAS LINE
	EVERGREEN SHRUB		GAS METER		OVERHEAD ELECTRIC LINE
	SHRUB		WATER VALVE		TELEPHONE LINE
	FIRE HYDRANT		GAS VALVE		CABLE TV LINE
	SIGN	(TBA) TO BE ADJUSTED			STORM SEWER
	BALLORD	(TBR) TO BE REMOVED			SANITARY SEWER
	POWER POLE	(TBR&R) TO BE REMOVED & RELOCATED			LIGHT POLE
	POWER POLE WITH DOWN GUY	(TBR&RBO) TO BE REMOVED & RELOCATED BY OTHERS			STORM SEWER MANHOLE
	FENCE	DND DO NOT DISTURB			SANITARY SEWER MANHOLE
	BENCH MARK		PROPERTY LINE		CATCH BASIN
	DITCH/SWALE		EXIST R.O.W. LINE		INLET
	EXISTING MAILBOX		WOOD POST		

GENERAL NOTES:

ILLINOIS STATE LAW REQUIRES A 48-HR NOTICE BE GIVEN TO ALL UTILITIES BEFORE DIGGING. FIELD MARKING OF FACILITIES MAY BE OBTAINED BY CONTACTING J.U.L.I.E. OR FOR NON-J.U.L.I.E. MEMBERS, THE UTILITY COMPANY DIRECTLY. AGENCIES KNOWN TO HAVE FACILITIES WITHIN THE PROJECT AREA ARE AS FOLLOWS

- CITY OF GRANITE CITY STORM & SANITARY SEWERS
2000 EDISON AVENUE
GRANITE CITY, IL 62040
(618) 452-6222
- ILLINOIS AMERICAN WATER COMPANY WATER
2000 WEST 24TH STREET
GRANITE CITY, IL 62040
(618) 910-1217
ATTN: RON BEARD
- AMERENIP GAS
2600 NORTH CENTER STREET
P.O. BOX 378, MC Q-10
MARYVILLE, IL 62062
(618) 346-1236
ATTN: MARK HOLDNER
- AMERENIP ELECTRIC
2600 NORTH CENTER STREET
P.O. BOX 378, MC Q-10
MARYVILLE, IL 62062
(618) 346-1215
ATTN: BRIAN HOFF
- AT&T TELEPHONE
203 GOETHE
COLLINSVILLE, IL 62234
(618) 346-7228
ATTN: TODD ISAAK
- CHARTER COMMUNICATIONS CABLE TELEVISION
MAPPING & DESIGN DEPT.
941 CHATER COMMONS
TOWN & COUNTY, MO 63017
(636) 220-2174
ATTN: LARRY SAAFIR
(636) 220-2165
ATTN: STEVE GERREIN
- MCLEOD USA FIBER OPTIC
ATTN: ENGINEERING DEPT.
102 EAST SHAFFER STREET
FORSYTH, IL 62535
(217) 876-7194 EXT. 240
ATTN: MARK MILLS

(MEMBERS OF J.U.L.I.E. (800) 892-0123 ARE INDICATED BY *. NON-J.U.L.I.E. MEMBERS MUST BE NOTIFIED INDIVIDUALLY)

FOR UTILITY LOCATION PURPOSES, THIS PROJECT IS LOCATED IN SECTIONS 16 OF TOWNSHIP 3 NORTH, RANGE 9 WEST OF THE THIRD PRINCIPAL MERIDIAN.

TREES SHALL BE PRESERVED THROUGH OUT THIS SECTION AS SHOWN ON THE PLANS AND AS DIRECTED BY THE ENGINEER.

THE CONTRACTOR SHALL CONSTRUCT PAVEMENT SO THAT FLOW ALONG CURBS AND/OR GUTTERS IS MAINTAINED, INCLUDING FLOW THROUGH INTERSECTIONS, AROUND CURB RETURNS AND TO EXISTING INLETS.

EARTHWORK AND MATERIAL REQUIRED IN CONNECTION WITH EXCAVATION, EMBANKMENTS, BACKFILLING BEHIND CURBS, SIDEWALKS, AND DRAINAGE STRUCTURES, AND GRADING AND SHAPING OF AREAS DISTURBED BY THE CONTRACTOR SHALL NOT BE PAID FOR SEPARATELY, BUT SHALL BE CONSIDERED INCIDENTAL TO VARIOUS ITEMS OF WORK INVOLVED AND NO ADDITIONAL COMPENSATION OR RENUMERATION WILL BE ALLOWED.

THE TOP OF PROPOSED P.C.C. CURB/CURB AND GUTTER SHALL BE CONSTRUCTED AT THE SAME ELEVATION AS THE TOP OF THE EXISTING CURB/CURB AND GUTTER. THIS SHALL BE DONE IN ORDER TO MAINTAIN THE EXISTING DRAINAGE PATTERN TO THE EXISTING INLETS AND TO MAINTAIN THE EXISTING PROFILE.

THE THICKNESS OF BITUMINOUS MIXTURES SHOWN ON THE PLANS IS THE AVERAGE THICKNESS. DEVIATIONS FROM THE AVERAGE THICKNESS WILL BE PERMITTED WHEN SUCH DEVIATIONS OCCUR DUE TO IRREGULARITIES IN THE EXISTING SURFACE OR BASE ON WHICH THE BITUMINOUS MIXTURE IS PLACED.

SHORT TERM PAVEMENT MARKINGS SHALL BE APPLIED TO THE MILLED, PRIMED, BINDER COURSE, AND FINAL SURFACE COURSE. ONLY THE REMOVAL OF THE FINAL SURFACE APPLICATION WILL BE PAID FOR (WORK ZONE PAVEMENT MARKING REMOVAL-SQ FT). AN AMOUNT OF TEMPORARY PAVEMENT MARKING WHICH EQUALS THE AMOUNT OF PERMANENT PAVEMENT MARKING HAS ALSO BEEN ADDED TO THE PLANS.

THE ROAD MUST REMAIN OPEN AT LEAST ONE LANE IN EACH DIRECTION OF TRAFFIC DURING CONSTRUCTION OPERATIONS.

THE CONTRACTOR SHALL VERIFY ALL DIMENSIONS AND CONDITIONS IN THE FIELD PRIOR TO CONSTRUCTION AND ORDERING OF MATERIALS.

THE REMOVAL OF ANY CURB/CURB AND GUTTER SHALL ALSO INCLUDE THE DISCONNECTION OF THE EXISTING CURB/CURB AND GUTTER FROM ANY REINFORCEMENT OR COLLATERAL MATERIAL THAT MAY BE PRESENTLY ATTACHED. THERE SHALL NOT BE ANY ADDITIONAL RENUMERATION BUT THIS WORK SHALL BE CONSIDERED AS INCIDENTAL TO THE REMOVAL ITEM.

AT ALL AREAS SHOWN IN THE PLANS WHERE THERE IS MILLING AND RESURFACING, THE MILLING AND RESURFACING OPERATIONS SHALL BE CONDUCTED IN SUCH A MANNER THAT IF THERE IS ANY OBSTRUCTIONS TO EXISTING DRAINAGE STRUCTURES, THESE OBSTRUCTIONS SHALL BE MILLED AWAY AND THE RESURFACING SHALL NOT OBSTRUCT THE STRUCTURE.

The following constants were used in the calculation of quantities for this project:

Hot-Mix Asphalt Concrete	112 lbs/S.Y./Inch
Bituminous Materials (prime coat)	0.07 gal/S.Y. (daved surface)
Aggregate (prime coat)	0.25 gal/S.Y. (aggregate surface)
	4 lbs/S.Y.

"ROAD CONSTRUCTION AHEAD" SIGNS SHALL BE PLACED AT THE BEGINNING AND END OF THE PROJECT PLUS THE INTERSECTING SIDE ROADS, AND WILL BE CONSIDERED INCLUDED IN THE TRAFFIC CONTROL PAY ITEMS. ALL CONSTRUCTION SIGNS SHALL BE 48"x48" FLUORESCENT ORANGE.

NO OVERNIGHT LANE CLOSURES SHALL BE PERMITTED ON THIS PROJECT.

THE ESTIMATED TONNAGE OF MILLED MATERIAL IS 1032 TONS.

ALL EXCAVATED AREAS DUE TO WIDENING AND/OR PATCHING OPERATIONS SHALL BE PROTECTED WITH EXTENDED LEG BARRICADES WITH APPROPRIATE LIGHTS. THIS WILL NOT BE PAID FOR SEPARATELY BUT WILL BE INCLUDED IN THE CONTRACT.

THE FOLLOWING MIXTURE REQUIREMENTS ARE APPLICABLE FOR THIS PROJECT:

THE FOLLOWING MIXTURE REQUIREMENTS ARE APPLICABLE FOR THIS PROJECT:			
MIXTURE USE	SURFACE		
ACPG	PG 64-22		
RAP % (MAX)	10		
DESIGN AIR VOIDS	4.0% @ N _{des} =90		
MIX COMPOSITION			
(GRADATION MIXTURE)			
FRICTION AGG	MIXTURE D		

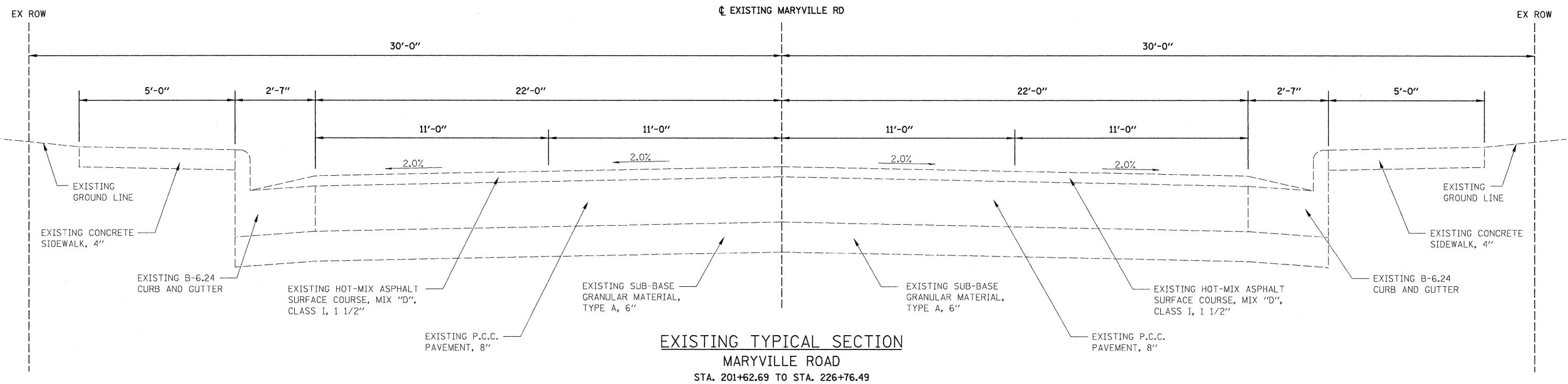
FILE NAME =	USER NAME = lke	DESIGNED - BFK	REVISED -	CITY OF GRANITE CITY MARYVILLE ROAD	GENERAL NOTES	F.A.U. RTE.	SECTION	COUNTY	TOTAL SHEETS	SHEET NO.	
#FILEL#	PLOT SCALE = #SCALE#	DRAWN - JDH	REVISED -			9080	09-00190-00-RS	MADISON	20	2	
	PLOT DATE = 9/3/2009	CHECKED - BFK	REVISED -			SCALE: N.T.S.		SHEET NO. 1 OF 1 SHEETS		STA.	TO STA.
		DATE - 4/22/09	REVISED -			FED. ROAD DIST. NO.		ILLINOIS FED. AID PROJECT		CONTRACT NO. 97401	

SUMMARY OF QUANTITIES

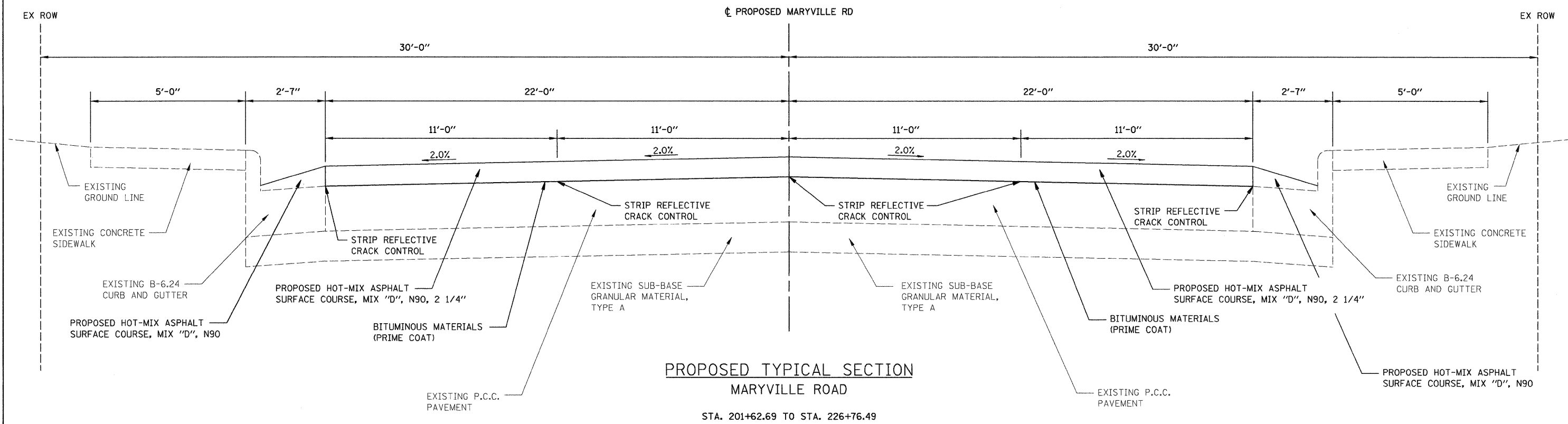
SUMMARY OF QUANTITIES			
CODE NO.	ITEM DESCRIPTION	UNIT	TOTAL QUANTITY
40600100	BITUMINOUS MATERIALS (PRIME COAT)	GALLON	947
40600300	AGGREGATE (PRIME COAT)	TON	27
40600990	TEMPORARY RAMP	SQ YD	62
40603345	HOT-MIX ASPHALT SURFACE COURSE, MIX "D", N90	TON	1644
42400100	PORTLAND CEMENT CONCRETE SIDEWALK 4 INCH	SQ FT	1146
42400800	DETECTABLE WARNINGS	SQ FT	106
44000155	HOT-MIX ASPHALT SURFACE REMOVAL, 1 1/2"	SQ YD	13406
44000500	COMBINATION CURB AND GUTTER REMOVAL	FOOT	57
44000600	SIDEWALK REMOVAL	SQ FT	884
44200970	CLASS B PATCHES, TYPE II, 10 INCH	SQ YD	503
44200974	CLASS B PATCHES, TYPE III, 10 INCH	SQ YD	15
44200976	CLASS B PATCHES, TYPE IV, 10 INCH	SQ YD	84
44213100	PAVEMENT FABRIC	SQ YD	99
44213200	SAW CUTS	FOOT	3439
44300200	STRIP REFLECTIVE CRACK CONTROL TREATMENT	FOOT	13066
60605000	COMBINATION CONCRETE CURB AND GUTTER, TYPE B-6.24	FOOT	57
67100100	MOBILIZATION	L SUM	1
70101700	TRAFFIC CONTROL AND PROTECTION	L SUM	1
70300100	SHORT-TERM PAVEMENT MARKING	FOOT	1371
70300220	TEMPORARY PAVEMENT MARKING-LINE 4"	FOOT	5979
70300240	TEMPORARY PAVEMENT MARKING-LINE 6"	FOOT	862
70300260	TEMPORARY PAVEMENT MARKING-LINE 12"	FOOT	120
70301000	WORK ZONE PAVEMENT MARKING REMOVAL	SQ FT	3001
* 78000200	THERMOPLASTIC PAVEMENT MARKING - LINE 4"	FOOT	5979
* 78000400	THERMOPLASTIC PAVEMENT MARKING - LINE 6"	FOOT	862
* 78003150	PREFORMED PLASTIC PAVEMENT MARKING, TYPE B - LINE 12"	FOOT	120
Z0017202	DOWEL BARS 1 1/2 "	EACH	596
Z0022800	FENCE REMOVAL	FOOT	38
Z0075310	TIE BARS 3/4 "	EACH	66
Z0075330	TIE BARS 1 1/4 "	EACH	596

* SPECIALTY ITEMS

FILE NAME =	USER NAME = Iko	DESIGNED - BFK	REVISED -	CITY OF GRANITE CITY MARYVILLE ROAD	SUMMARY OF QUANTITIES			F.A.J. RTE. 9080	SECTION 09-00190-00-RS	COUNTY MADISON	TOTAL SHEETS 20	SHEET NO. 3
FILE#		DRAWN - DAN	REVISED -		SCALE: N.T.S. SHEET NO. 1 OF 1 SHEETS STA. TO STA.			FED. ROAD DIST. NO. ILLINOIS FED. AID PROJECT				
		CHECKED - BFK	REVISED -									
		DATE - 4/22/09	REVISED -									



FILE NAME = *FILEL*	USER NAME = lke	DESIGNED - BFK	REVISED -	CITY OF GRANITE CITY MARYVILLE ROAD	EXISTING TYPICAL SECTIONS	F.A.U. RTE. 9080	SECTION 09-00190-00-RS	COUNTY MADISON	TOTAL SHEETS 20	SHEET NO. 4	
	PLOT SCALE = *SCALE*	CHECKED - BFK	REVISED -			CONTRACT NO. 97401		FED. ROAD DIST. NO. ILLINOIS FED. AID PROJECT			
	PLOT DATE = 9/3/2009	DATE - 4/7/09	REVISED -			SCALE: N.T.S.	SHEET NO. 1 OF 1 SHEETS				



PROPOSED TYPICAL SECTION
MARYVILLE ROAD
 STA. 201+62.69 TO STA. 226+76.49

FILE NAME =	USER NAME = jke	DESIGNED - BFK	REVISED -	CITY OF GRANITE CITY MARYVILLE ROAD	PROPOSED TYPICAL SECTIONS		F.A.U. RTE.	SECTION	COUNTY	TOTAL SHEETS	SHEET NO.
*FILE#		DRAWN - JDH	REVISED -				9080	09-00190-00-RS	MADISON	20	5
	PLOT SCALE = \$SCALE#	CHECKED - BFK	REVISED -		SCALE: N.T.S. SHEET NO. 1 OF 1 SHEETS		CONTRACT NO. 97401				
	PLOT DATE = 9/3/2009	DATE - 4/7/09	REVISED -		FED. ROAD DIST. NO. ILLINOIS FED. AID PROJECT						

PAVING SCHEDULE

LOCATION	BIT MATL PR CT (GALLON)	AGGREGATE (PRIME COAT) (TON)	HOT-MIX ASPHALT SURFACE COURSE, MIX "D" N90, 2 1/4" (TON)
MARYVILLE ROAD			
STA. 201+62.69 TO STA. 226+76.49	946.6	27.0	1644.0
TOTAL	947	27	1644

TEMPORARY RAMP SCHEDULE

LOCATION	TEMPORARY RAMP (SQ YD)
MARYVILLE ROAD	
STA. 201+62.69	27
STA. 226+76.49	35
TOTAL	62

STRIPING SCHEDULE

LOCATION	TYPE	THERMOPLASTIC			PREFORMED PLASTIC
		4" YELLOW (FOOT)	4" WHITE (FOOT)	6" WHITE (FOOT)	12" WHITE (FOOT)
MARYVILLE ROAD					
STA. 201+62.69 TO STA. 226+76.49					
	STOP BAR				120
	CROSSWALK			805	
	DOUBLE CENTERLINE	4779			
	SKIP-DASH 10'-30'		1200		
	DIAGONALS			57	
TOTAL		4779	1200	862	120

CURB AND GUTTER SCHEDULE

LOCATION	C & G TYPE B-6.24 (FOOT)
MARYVILLE ROAD	
STA. 202+42.79 - 26.64' RT TO STA. 202+57.21 - 24.74' RT	15.00
STA. 210+70.41 - 24.12' RT TO STA. 210+82.61 - 24.01' RT	12.20
STA. 216+65.56 - 24.00' RT TO STA. 216+83.28 - 24.04' RT	17.72
STA. 223+72.54 - 23.87' RT TO STA. 223+85.04 - 23.87' RT	12.50
TOTAL	57

SIDEWALK SCHEDULE

LOCATION	P.C.C. SIDEWALK 4" (SQFT)
MARYVILLE ROAD	
STA. 201+81.54 - 35.54' LT TO STA. 201+89.87 - 34.75' LT	50.37
STA. 201+85.77 - 40.99' RT TO STA. 201+06.88 - 40.30' RT	44.00
STA. 202+29.39 - 38.35' RT TO STA. 202+35.40 - 35.40' RT	32.20
STA. 202+42.78 - 26.38' RT TO STA. 202+57.21 - 29.71' RT	64.36
STA. 202+45.15 - 30.53' LT TO STA. 202+57.68 - 30.05' LT	68.23
STA. 207+08.98 - 30.26' RT TO STA. 207+25.31 - 40.07' RT	120.41
STA. 207+64.61 - 35.08' RT TO STA. 207+79.76 - 30.38' RT	80.93
STA. 210+79.76 - 29.39' LT TO STA. 210+90.76 - 29.32' LT	55.00
STA. 214+66.25 - 29.39' LT TO STA. 214+86.35 - 38.55' LT	123.38
STA. 215+29.59 - 34.69' LT TO STA. 215+36.79 - 32.94' LT	26.63
STA. 216+76.18 - 29.65' LT TO STA. 216+81.68 - 29.65' LT	28.09
STA. 217+62.39 - 29.71' LT TO STA. 217+80.72 - 35.95' LT	116.14
STA. 218+29.88 - 38.30' LT TO STA. 218+47.37 - 30.06' LT	127.04
STA. 226+54.84 - 30.78' LT TO STA. 218+69.97 - 34.35' LT	71.27
STA. 226+50.61 - 30.16' RT TO STA. 226+72.61 - 30.13' RT	137.63
TOTAL	1146

4" PAVEMENT MARKING SCHEDULE

LOCATION	THERMOPLASTIC PAVEMENT MARKINGS, 4" "SKIP-DASH" (FOOT)	THERMOPLASTIC PAVEMENT MARKINGS, 4" "DOUBLE CENTERLINE" (FOOT)
MARYVILLE ROAD		
STA. 201+62.69 LT TO STA. 201+67.68 LT	5	
STA. 201+62.69 RT TO STA. 201+66.68 RT	5	
STA. 201+62.69 TO STA. 201+67.68		10
STA. 202+51.71 RT TO STA. 207+05.65 RT		
STA. 202+51.70 RT TO STA. 216+19.97 RT	344	
STA. 202+58.14 LT TO STA. 216+32.62 LT	342	
STA. 202+58.14 LT TO STA. 214+66.43 LT		
STA. 202+58.15 TO STA. 216+32.62		2750
STA. 207+82.96 RT TO STA. 216+32.63 RT		
STA. 215+69.07 LT TO STA. 216+32.63 LT		
STA. 216+38.63 RT TO STA. 226+47.48 RT		
STA. 216+38.63 RT TO STA. 226+47.48 RT	252	
STA. 216+38.63 TO STA. 226+47.46		2019
STA. 216+38.63 LT TO STA. 217+63.04 LT		
STA. 216+53.67 LT TO STA. 226+58.59 LT	252	
STA. 218+46.34 LT TO STA. 226+58.59 LT		
STA. 226+64.59 LT TO STA. 226+76.47 LT		
TOTAL	1200	4779

6" PAVEMENT MARKING SCHEDULE

LOCATION	THERMOPLASTIC PAVEMENT MARKINGS, 6" "CROSSWALK" (FOOT)	THERMOPLASTIC PAVEMENT MARKINGS, 6" "DIAGONALS" (FOOT)
MARYVILLE ROAD		
STA. 201+83.56 - 28.73' LT TO STA. 201+87.60 - 31.10' RT	60	
STA. 201+89.44 - 33.21' LT TO STA. 202+93.69 - 32.26' RT	66	
STA. 201+92.63 - 38.27' RT TO STA. 202+29.00 - 38.25' RT	36	
STA. 201+93.69 - 32.26' RT TO STA. 202+33.40 - 31.81' RT	40	
STA. 202+45.68 LT TO STA. 202+45.71 RT	48	
STA. 202+51.68 LT TO STA. 202+51.71 RT	48	
STA. 207+25.64 - 32.56' RT TO STA. 207+65.41 - 32.54' RT	40	
STA. 207+17.27 - 26.57' RT TO STA. 207+73.82 - 26.54' RT	57	
STA. 214+90.71 - 34.67' LT TO STA. 215+28.87 - 34.69' LT	38	
STA. 214+85.05 - 28.66' LT TO STA. 215+35.19 - 28.70' LT	50	
STA. 216+32.63 LT TO STA. 216+32.63 RT	48	57
STA. 216+38.63 LT TO STA. 216+38.63 LT	48	
STA. 217+80.51 - 30.58' LT TO STA. 218+28.78 - 30.59' LT	48	
STA. 217+66.62 - 24.57' LT TO STA. 218+42.35 - 24.59' LT	76	
STA. 226+58.59 LT TO STA. 226+58.61 RT	51	
STA. 226+64.59 LT TO STA. 226+64.61 RT	52	
TOTAL	805	57

12" PAVEMENT MARKING SCHEDULE

LOCATION	PRFM PLSTC PAVEMENT MARKINGS, 12" "STOP BAR" (FOOT)
MARYVILLE ROAD	
STA. 201+67.68	24
STA. 202+57.75	24
STA. 216+20.37	24
STA. 216+53.28	24
STA. 226+47.86	24
TOTAL	120

PATCHING SCHEDULE

LOCATION	WIDTH (FT)	PATCHES CLASS B, TYPE II 10" (SQ YD)	PATCHES CLASS B, TYPE III 10" (SQ YD)	PATCHES CLASS B, TYPE IV 10" (SQ YD)	PAVEMENT FABRIC (SQ YD)	DOWEL BARS 1 1/2" (EACH)	TIE BARS 3/4" (EACH)	TIE BARS 1 1/4" (EACH)	SAW CUTS (EACH)
MARYVILLE ROAD									
STA. 201+62.69 - 00.00' LT TO STA. 201+68.69 - 00.00' LT	11	7.27				8		8	39
STA. 201+62.69 - 10.82' LT TO STA. 201+68.69 - 11.02' LT	11	7.66				9		9	53
STA. 202+73.28 - 00.00' LT TO STA. 202+79.28 - 00.00' LT	11	7.33				8		8	39
STA. 202+73.28 - 11.00' LT TO STA. 202+79.28 - 11.00' LT	11	7.27				9		9	53
STA. 203+73.36 - 00.00' LT TO STA. 203+79.36 - 00.00' LT	11	7.33				8		8	39
STA. 203+73.36 - 11.00' LT TO STA. 203+79.36 - 11.00' LT	11	7.26				9		9	53
STA. 204+72.96 - 00.00' LT TO STA. 204+78.96 - 00.00' LT	11	7.33				8		8	39
STA. 204+72.96 - 11.00' LT TO STA. 204+78.96 - 11.00' LT	11	7.26				9		9	53
STA. 205+73.19 - 00.00' LT TO STA. 205+79.19 - 00.00' LT	11	7.33				8		8	39
STA. 205+73.19 - 11.00' LT TO STA. 205+79.19 - 11.00' LT	11	7.22				9		9	53
STA. 206+75.05 - 00.00' LT TO STA. 206+75.05 - 00.00' LT	11	7.33				8		8	39
STA. 206+75.05 - 11.00' LT TO STA. 206+75.05 - 11.00' LT	11	7.32				9		9	53
STA. 210+73.94 - 00.00' LT TO STA. 210+79.94 - 00.00' LT	11	7.35				8		8	39
STA. 210+73.94 - 11.00' LT TO STA. 210+79.94 - 11.00' LT	11	7.27				9		9	53
STA. 213+72.00 - 00.00' LT TO STA. 213+78.00 - 00.00' LT	11	7.35				8		8	39
STA. 213+72.00 - 11.00' LT TO STA. 213+78.00 - 11.00' LT	11	7.19				9		9	53
STA. 216+73.24 - 00.00' LT TO STA. 216+73.24 - 00.00' LT	11	7.35				8		8	39
STA. 216+73.24 - 11.00' LT TO STA. 216+73.24 - 11.00' LT	11	7.29				9		9	53
STA. 218+74.14 - 00.00' LT TO STA. 218+80.14 - 00.00' LT	11	7.34				8		8	39
STA. 218+74.14 - 11.00' LT TO STA. 218+80.14 - 11.00' LT	11	7.21				9		9	53
STA. 220+72.38 - 00.00' LT TO STA. 220+78.38 - 00.00' LT	11	7.34				8		8	39
STA. 220+72.38 - 11.00' LT TO STA. 220+78.38 - 11.00' LT	11	7.26				9		9	53
STA. 221+74.23 - 00.00' LT TO STA. 220+79.62 - 00.00' LT	11	7.33				8		8	39
STA. 221+74.23 - 11.00' LT TO STA. 220+79.62 - 11.00' LT	11	7.4				9		9	53
STA. 222+73.62 - 00.00' LT TO STA. 220+79.62 - 00.00' LT	11	7.34				8		8	39
STA. 222+73.62 - 11.00' LT TO STA. 220+79.62 - 11.00' LT	11	7.24				9		9	53
STA. 223+75.70 - 00.00' LT TO STA. 223+81.70 - 00.00' LT	11	7.34				8		8	39
STA. 223+75.70 - 11.00' LT TO STA. 223+81.70 - 11.00' LT	11	7.36				9		9	53
STA. 224+73.43 - 00.00' LT TO STA. 224+79.43 - 00.00' LT	11	7.34				8		8	39
STA. 224+73.43 - 11.00' LT TO STA. 224+79.43 - 11.00' LT	11	7.37				9		9	53
STA. 225+75.72 - 00.00' LT TO STA. 225+81.72 - 00.00' LT	11	7.33				8		8	39
STA. 225+75.72 - 11.00' LT TO STA. 225+81.72 - 11.00' LT	11	7.32				9		9	53
STA. 226+52.67 - 00.00' LT TO STA. 226+58.67 - 00.00' LT	11	7.34				8		8	39
STA. 226+47.92 - 11.00' LT TO STA. 226+58.67 - 11.00' LT	IRREGULAR		15.28		15.28	9		9	72
STA. 201+62.69 - 00.00' RT TO STA. 201+68.69 - 00.00' RT	11	7.36				8		8	39
STA. 201+62.69 - 11.00' RT TO STA. 201+68.69 - 11.02' RT	11	7.16				9		9	53
STA. 202+73.28 - 00.00' RT TO STA. 202+79.28 - 00.00' RT	11	7.33				8		8	39
STA. 202+73.28 - 11.00' RT TO STA. 202+79.28 - 11.00' RT	11	7.33				9		9	53
STA. 203+73.36 - 00.00' RT TO STA. 203+79.36 - 00.00' RT	11	7.33				8		8	39
STA. 203+73.36 - 11.00' RT TO STA. 203+79.36 - 11.00' RT	11	7.45				9		9	53
STA. 204+72.96 - 00.00' RT TO STA. 204+78.96 - 00.00' RT	11	7.33				8		8	39
STA. 204+72.96 - 11.00' RT TO STA. 204+78.96 - 11.00' RT	11	7.36				9		9	53
STA. 205+73.19 - 00.00' RT TO STA. 205+79.19 - 00.00' RT	11	7.33				8		8	39
STA. 205+73.19 - 11.00' RT TO STA. 205+79.19 - 11.00' RT	11	7.34				9		9	53
STA. 206+75.05 - 00.00' RT TO STA. 206+75.05 - 00.00' RT	11	7.33				8		8	39
STA. 206+75.05 - 11.00' RT TO STA. 206+75.05 - 11.00' RT	11	7.37				9		9	53
STA. 208+73.91 - 11.00' RT TO STA. 208+79.91 - 11.00' RT	11	7.34				9		9	53
STA. 210+73.94 - 00.00' RT TO STA. 210+79.94 - 00.00' RT	11	7.32				8		8	39
STA. 210+73.94 - 11.00' RT TO STA. 210+79.94 - 11.00' RT	11	7.39				9		9	53
STA. 213+72.00 - 00.00' RT TO STA. 213+78.00 - 00.00' RT	11	7.32				8		8	39
STA. 213+72.00 - 11.00' RT TO STA. 213+78.00 - 11.00' RT	11	7.35				9		9	53
STA. 214+40.22 - 11.00' RT TO STA. 215+08.72 - 11.00' RT	11			83.72	83.72	9	66	9	239
SUBTOTAL		366	15	84	99	443	66	443	2611

**HOT-MIX ASPHALT
SURFACE REMOVAL SCHEDULE**

LOCATION	HOT-MIX ASPHALT SURFACE REMOVAL (SQ YD)
MARYVILLE ROAD	
STA. 201+62.69 TO STA. 226+76.49	13406.0
TOTAL	13406

SIDEWALK REMOVAL SCHEDULE

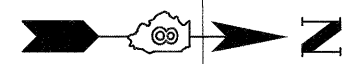
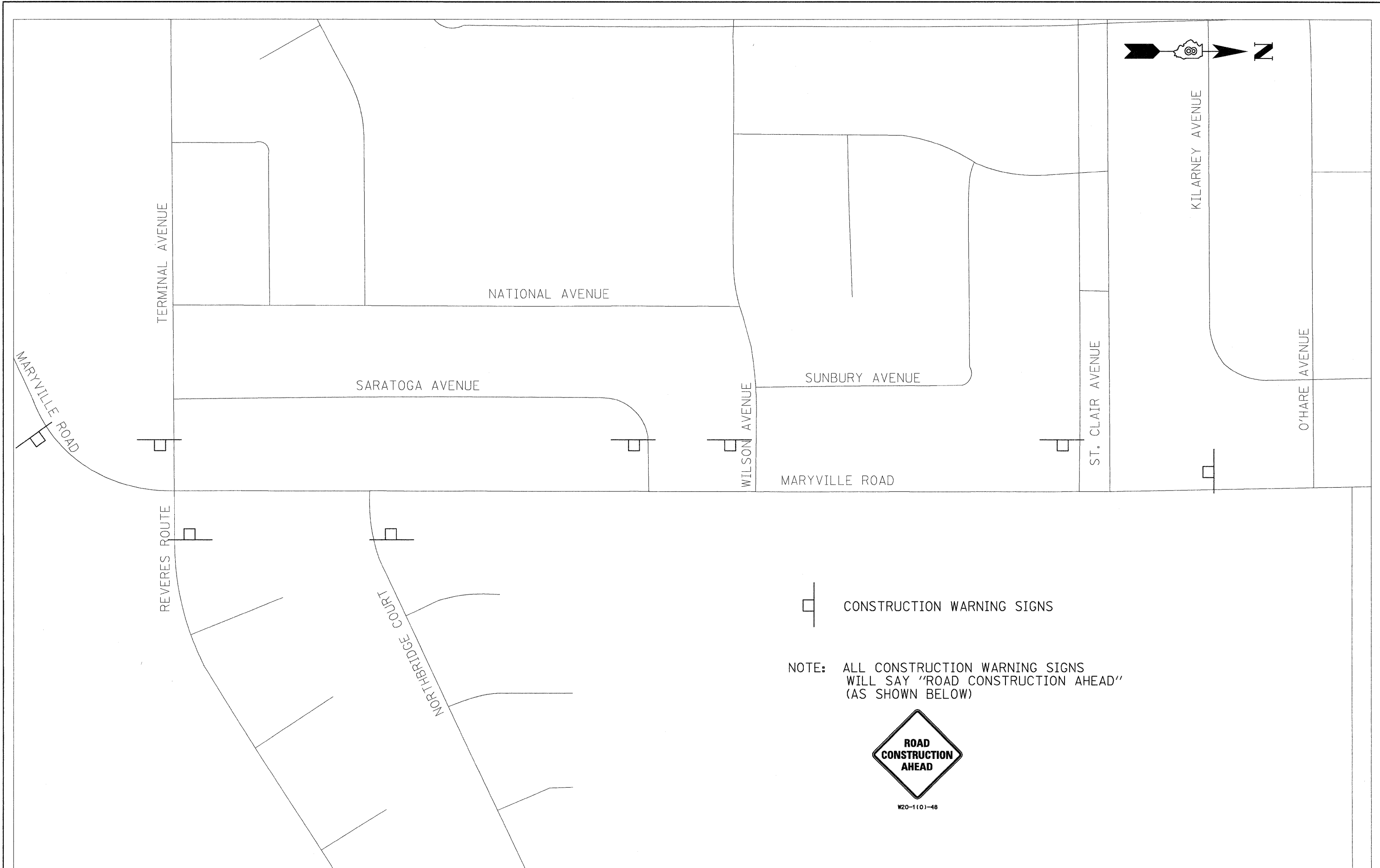
LOCATION	SIDEWALK REMOVAL (SQFT)
MARYVILLE ROAD	
STA. 201+82.09 - 35.54' LT TO STA. 201+89.49 - 34.39' LT	39.30
STA. 201+87.64 - 40.99' RT TO STA. 201+92.95 - 39.46' RT	27.81
STA. 202+29.39 - 38.35' RT TO STA. 202+37.48 - 35.40' RT	32.21
STA. 202+43.21 - 26.64' RT TO STA. 202+57.21 - 24.74' RT	64.55
STA. 202+45.65 - 29.98' LT TO STA. 202+57.68 - 29.55' LT	59.63
STA. 207+08.98 - 29.74' RT TO STA. 207+25.31 - 40.07' RT	111.44
STA. 207+64.61 - 35.08' RT TO STA. 207+79.76 - 24.97' RT	76.40
STA. 210+79.76 - 29.39' LT TO STA. 210+90.76 - 29.32' LT	55.00
STA. 214+68.54 - 29.46' LT TO STA. 214+85.05 - 29.63' LT	47.10
STA. 215+29.59 - 34.69' LT TO STA. 215+36.79 - 32.94' LT	26.63
STA. 216+76.18 - 29.65' LT TO STA. 216+81.68 - 29.65' LT	28.09
STA. 217+63.39 - 29.20' LT TO STA. 217+80.72 - 35.95' LT	71.20
STA. 218+29.88 - 38.30' LT TO STA. 218+46.37 - 29.56' LT	81.90
STA. 226+54.94 - 29.76' LT TO STA. 226+69.98 - 34.35' LT	52.42
STA. 226+50.62 - 29.66' RT TO STA. 226+72.62 - 29.63' RT	109.92
TOTAL	884

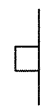
CURB AND GUTTER REMOVAL SCHEDULE

LOCATION	C & G REMOVAL TYPE B-6.24 (FT)
MARYVILLE ROAD	
STA. 202+42.79 - 26.64' RT TO STA. 202+57.21 - 24.74' RT	15.00
STA. 210+70.41 - 24.12' RT TO STA. 210+82.61 - 24.01' RT	12.20
STA. 216+65.56 - 24.00' RT TO STA. 216+83.28 - 24.04' RT	17.72
STA. 223+72.54 - 23.87' RT TO STA. 223+85.04 - 23.87' RT	12.50
TOTAL	57

FENCE REMOVAL SCHEDULE

LOCATION	FENCE REMOVAL (FT)
MARYVILLE ROAD	
STA. 217+63.16 - 31.92' LT TO STA. 217+70.14 - 31.61' LT	7
STA. 217+75.81 - 33.82' LT TO STA. 217+ 75.58 - 51.71' LT	18
STA. 218+36.48 - 30.65' LT TO STA. 218+49.37 - 30.67' LT	13
TOTAL	38



 CONSTRUCTION WARNING SIGNS

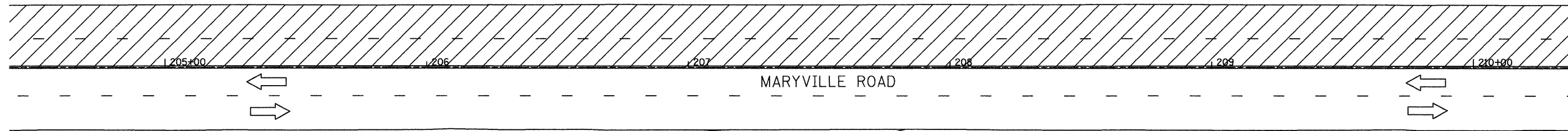
NOTE: ALL CONSTRUCTION WARNING SIGNS WILL SAY "ROAD CONSTRUCTION AHEAD" (AS SHOWN BELOW)



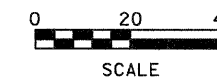
W20-1101-48

FILE NAME = \$FILEL\$	USER NAME = Ika	DESIGNED - BFK	REVISED -	CITY OF GRANITE CITY MARYVILLE ROAD	ADVANCED WARNING			F.A.U. RTE. 9080	SECTION 09-00190-00-RS	COUNTY MADISON	TOTAL SHEETS 20	SHEET NO. 10
	PLLOT SCALE = \$SCALE\$	DRAWN - JDH	REVISED -		SCALE: N.T.S.	SHEET NO. 1 OF 1 SHEETS	STA.	TO STA.	FED. ROAD DIST. NO.	ILLINOIS FED. AID PROJECT	CONTRACT NO. 97401	
	PLLOT DATE = 9/3/2009	CHECKED - BFK	REVISED -									
		DATE - 4/22/09	REVISED -									

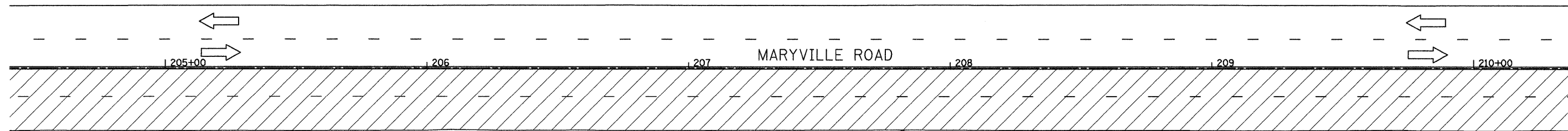
NOTE: THESE STAGING DETAILS ARE A GENERAL SUGGESTION FOR CONSTRUCTION ACTIVITIES ALONG THE ENTIRE LENGTH OF THE PROJECT. THEREFORE ONLY A PORTION OF THE PLAN IS SHOWN HEREIN.



STAGE 1 CONSTRUCTION



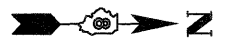
NOTE: THESE STAGING DETAILS ARE A GENERAL SUGGESTION FOR CONSTRUCTION ACTIVITIES ALONG THE ENTIRE LENGTH OF THE PROJECT. THEREFORE ONLY A PORTION OF THE PLAN IS SHOWN HEREIN.



STAGE 2 CONSTRUCTION



FILE NAME = \$FILEL\$	USER NAME = lke	DESIGNED - BFK	REVISED -	CITY OF GRANITE CITY MARYVILLE ROAD	STAGE CONSTRUCTION			F.A.U. RTE: 9080	SECTION 09-00190-00-RS	COUNTY MADISON	TOTAL SHEETS 20	SHEET NO. 11
	PLOT SCALE = \$SCALE\$	DRAWN - DAN	REVISED -		SCALE: 1"=20'	SHEET NO. 1 OF 1 SHEETS	STA.	TO STA.	CONTRACT NO. 97401			
	PLOT DATE = 9/3/2009	CHECKED - BFK	REVISED -		FED. ROAD DIST. NO. [ILLINOIS] FED. AID PROJECT							
		DATE - 4/22/09	REVISED -									



**BEGIN PROJECT
STA. 201 + 62.69**

PROP. CURVE EXMARY-1
 PI STA. = 201+10.73
 $\Delta = 21^\circ 56' 58''$ (LT)
 $D = 14^\circ 52' 55''$
 $R = 385.00'$
 $T = 74.66'$
 $L = 147.49'$
 $E = 7.17'$
 $e =$
 T.R. = -----
 S.E. RUN = -----
 P.C. STA = 200+36.07
 P.T. STA = 201+83.56

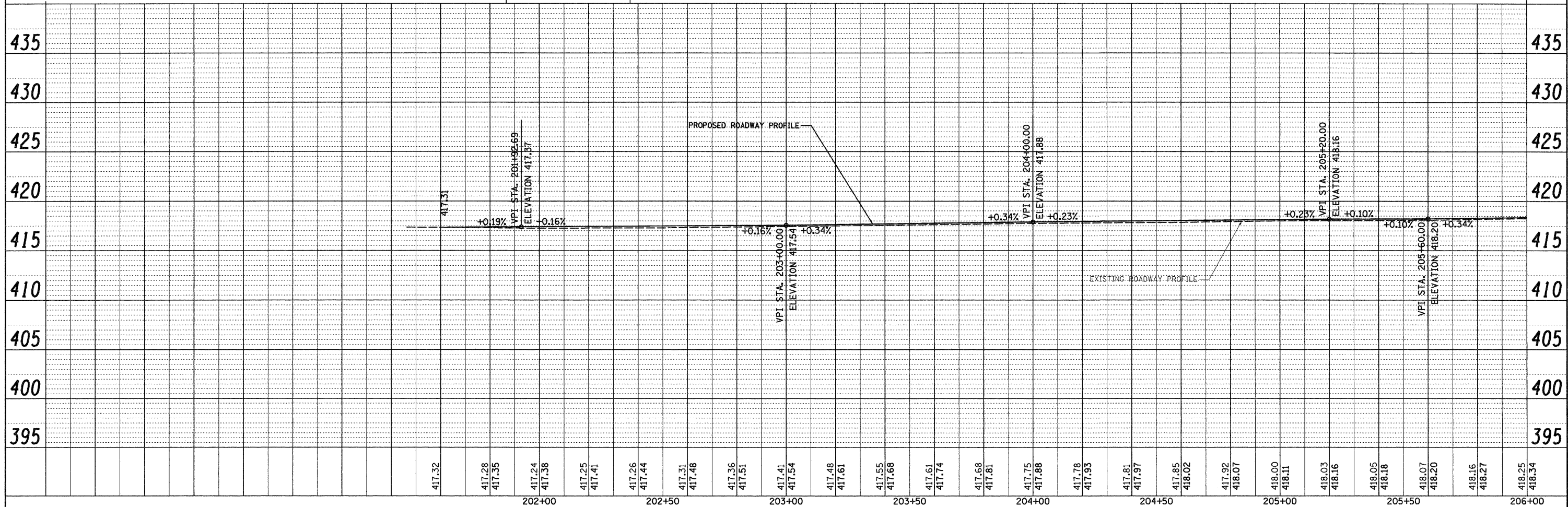
LEGEND

- PATCHES, CLASS B, TYPE II, 10"
- PATCHES, CLASS B, TYPE III, 10"
- PATCHES, CLASS B, TYPE IV, 10"

0 20 40
SCALE

DATE	
BY	
SURVEYED	
ALIGNED	
NOTED	
STRUCTURE	
NO.	

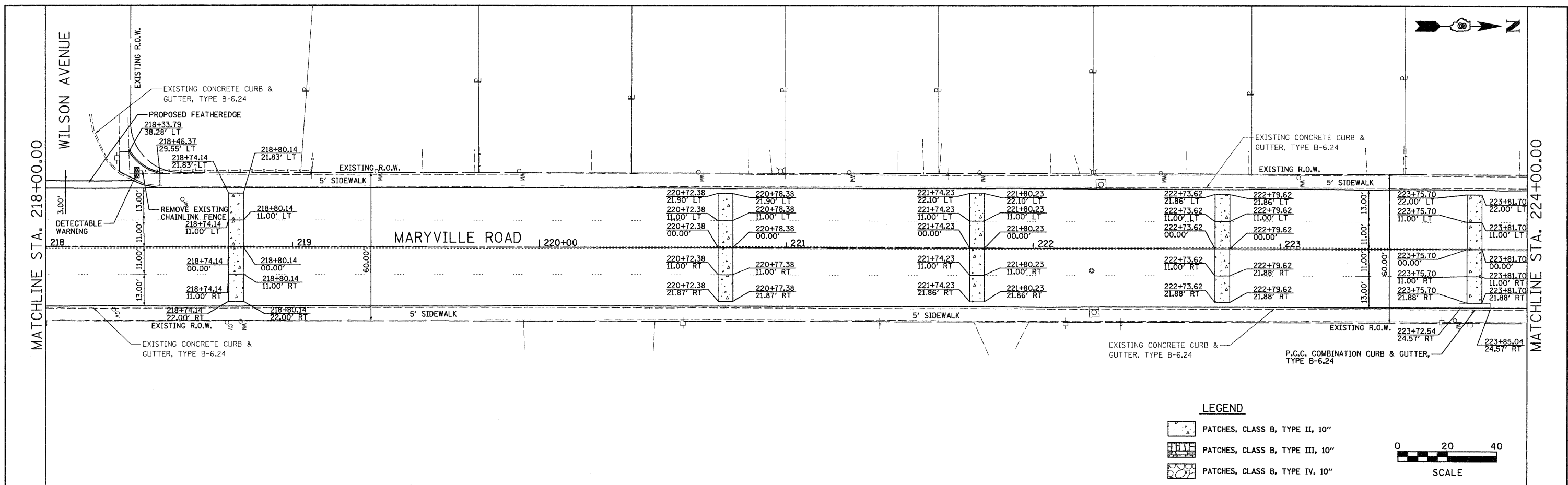
DATE	
BY	
SURVEYED	
ALIGNED	
NOTED	
STRUCTURE	
NO.	



FILE NAME =	USER NAME = lke	DESIGNED - BFK	REVISED -	CITY OF GRANITE CITY MARYVILLE ROAD	PLAN AND PROFILE	F.A.U. RTE.	SECTION	COUNTY	TOTAL SHEETS	SHEET NO.	
#FILE#		DRAWN - JDH	REVISED -			9080	09-00190-00-RS	MADISON	20	12	
		CHECKED - BFK	REVISED -			SCALE: 1" = 20'		SHEET NO. 1 OF 5 SHEETS		STA. 200+00.00 TO STA. 206+00.00	
		DATE - 4/8/09	REVISED -			FED. ROAD DIST. NO.		ILLINOIS FED. AID PROJECT		CONTRACT NO. 97401	

BY DATE
 SURVEYED
 ALIGNED
 CHECKED
 RT. OF WAY
 CHECKED
 PAID FILE NAME
 NO.

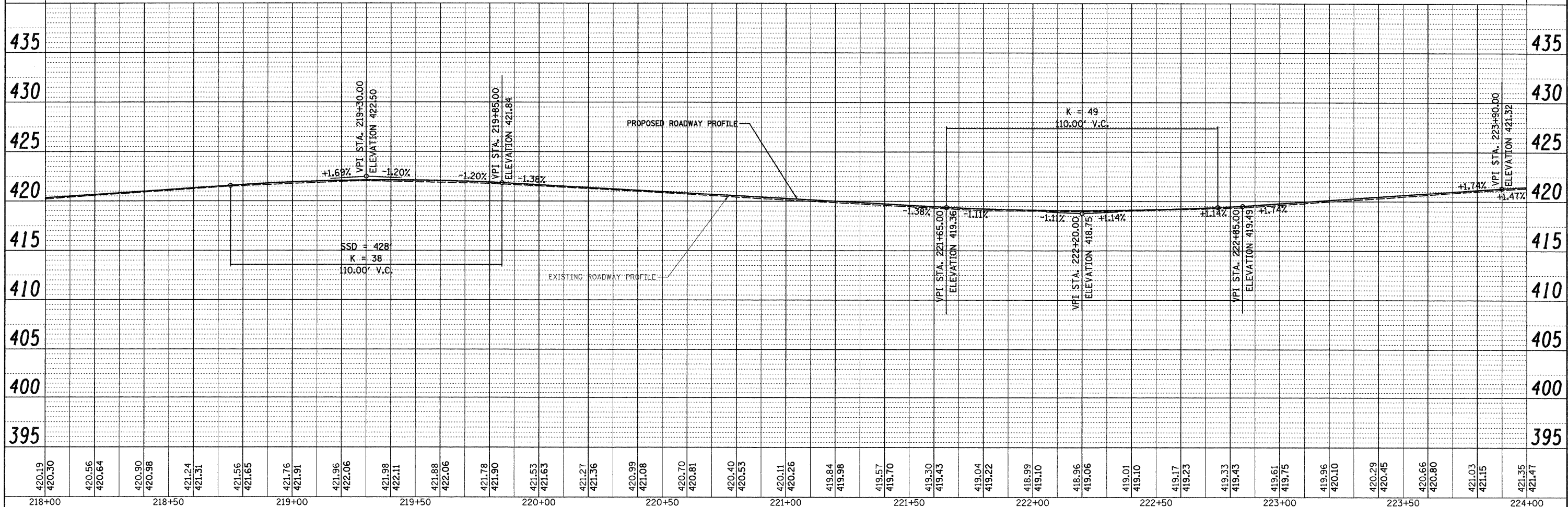
BY DATE
 SURVEYED
 GRADES
 CHECKED
 B.M. NOTED
 STRUCTURE
 NOTATIONS
 CRKD
 NO.



LEGEND

- PATCHES, CLASS B, TYPE II, 10"
- PATCHES, CLASS B, TYPE III, 10"
- PATCHES, CLASS B, TYPE IV, 10"

0 20 40
 SCALE



FILE NAME =	USER NAME = Iko	DESIGNED - BFK	REVISED -	CITY OF GRANITE CITY MARYVILLE ROAD	PLAN AND PROFILE	F.A.U. RT#	SECTION	COUNTY	TOTAL SHEETS	SHEET NO.	
#FILE#		DRAWN - JDH	REVISED -			9080	09-00190-00-RS	MADISON	20	15	
		CHECKED - BFK	REVISED -			CONTRACT NO. 97401					
		DATE - 4/8/09	REVISED -			FED. ROAD DIST. NO. ILLINOIS FED. AID PROJECT					

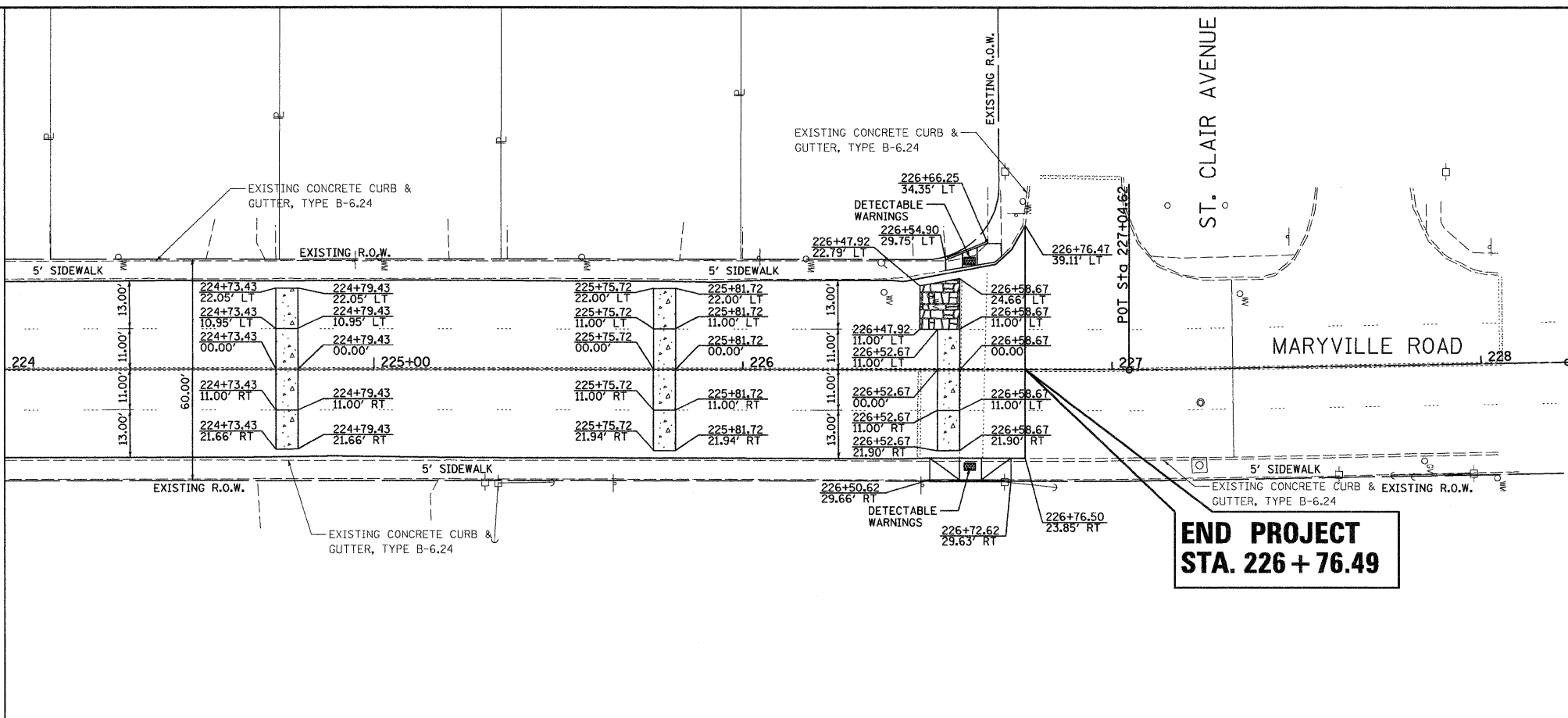
218+00	218+10	218+20	218+30	218+40	218+50	219+00	219+10	219+20	219+30	219+40	219+50	220+00	220+10	220+20	220+30	220+40	220+50	221+00	221+10	221+20	221+30	221+40	221+50	222+00	222+10	222+20	222+30	222+40	222+50	223+00	223+10	223+20	223+30	223+40	223+50	224+00																									
420.19	420.30	420.56	420.64	420.90	420.98	421.24	421.31	421.56	421.65	421.76	421.91	421.96	422.06	421.98	422.11	421.88	422.06	421.78	421.90	421.53	421.63	421.27	421.36	420.99	421.08	420.70	420.81	420.40	420.53	420.11	420.26	419.84	419.98	419.57	419.70	419.30	419.43	419.04	419.22	418.99	419.10	418.96	419.06	419.01	419.10	419.17	419.23	419.33	419.43	419.61	419.75	419.96	420.10	420.29	420.45	420.66	420.80	421.03	421.15	421.35	421.47



DATE	
BY	
SURVEYED	
PLANNED	
ALIGNED	
LOCATED	
RT. OF WAY CHECKED	
NOTE BOOK	
NO.	
CAO FILE NAME	

DATE	
BY	
SURVEYED	
PLANNED	
ALIGNED	
LOCATED	
RT. OF WAY CHECKED	
NOTE BOOK	
NO.	
STRUCTURE NOTATIONS CHKD	

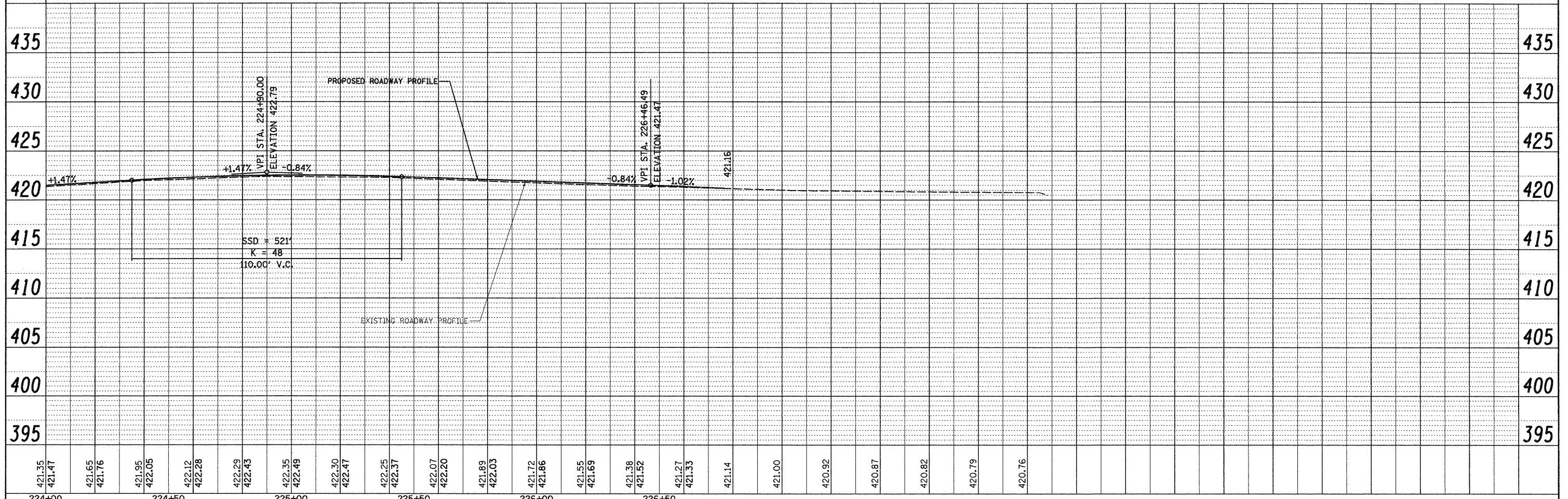
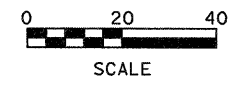
MATCHLINE STA. 224+00.00



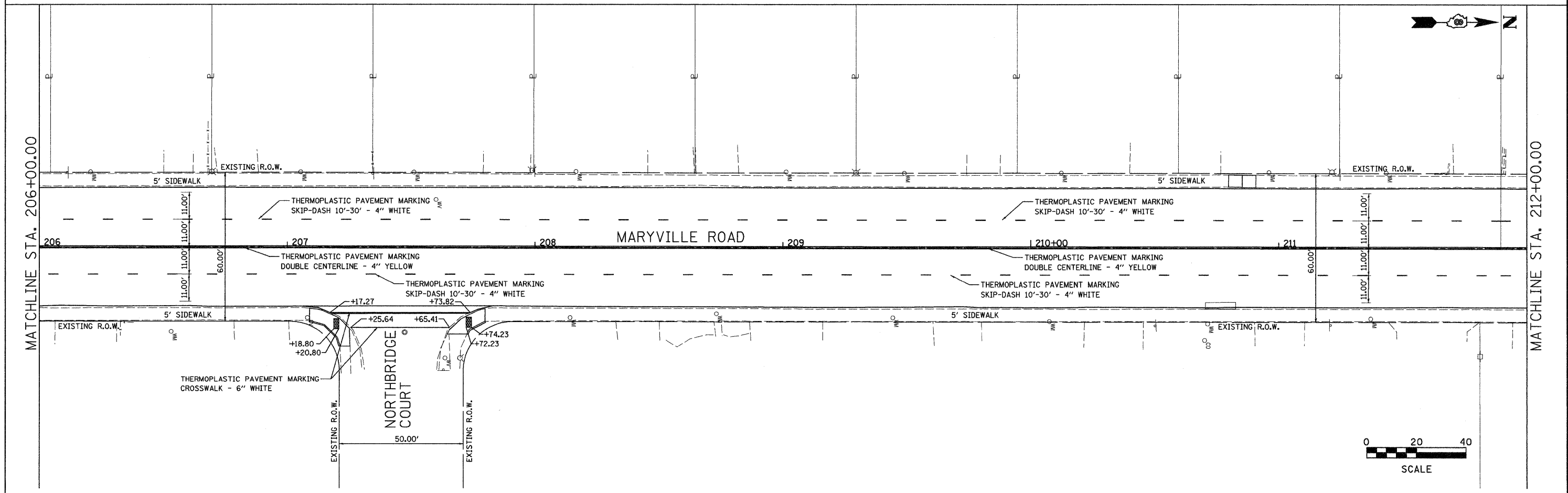
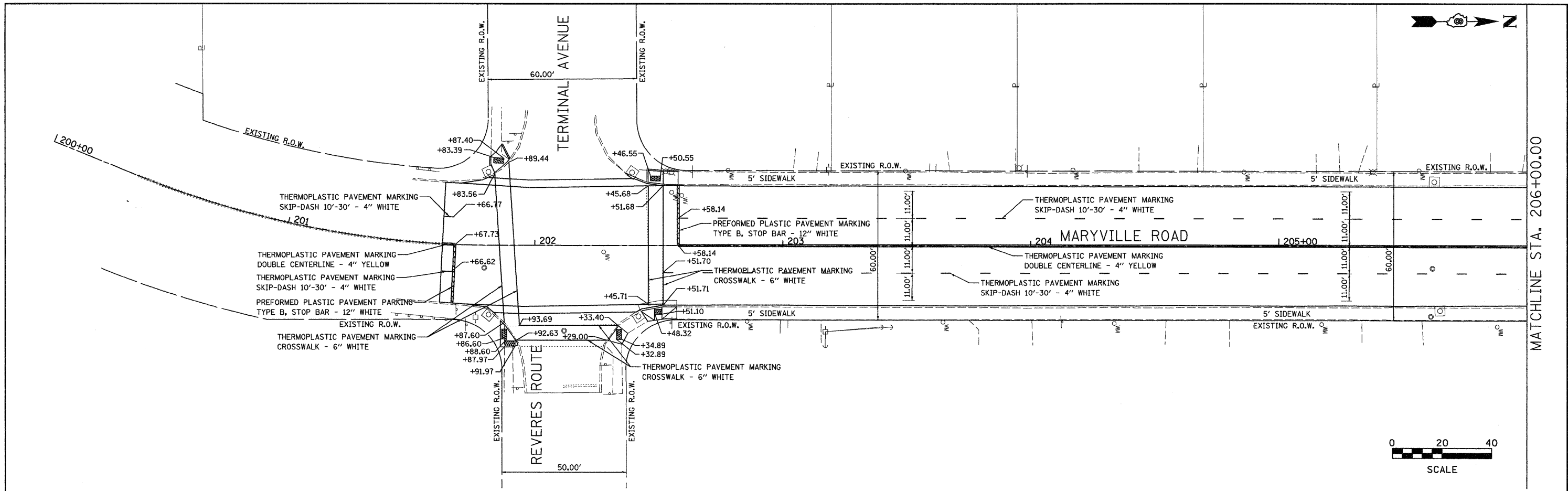
**END PROJECT
STA. 226 + 76.49**

LEGEND

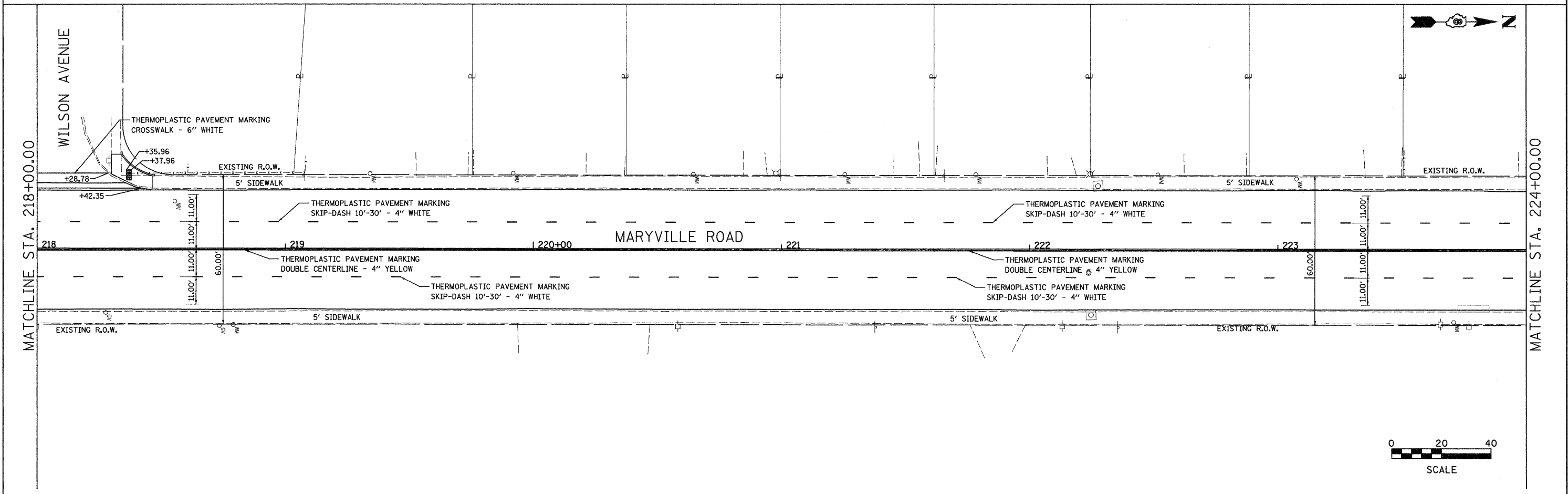
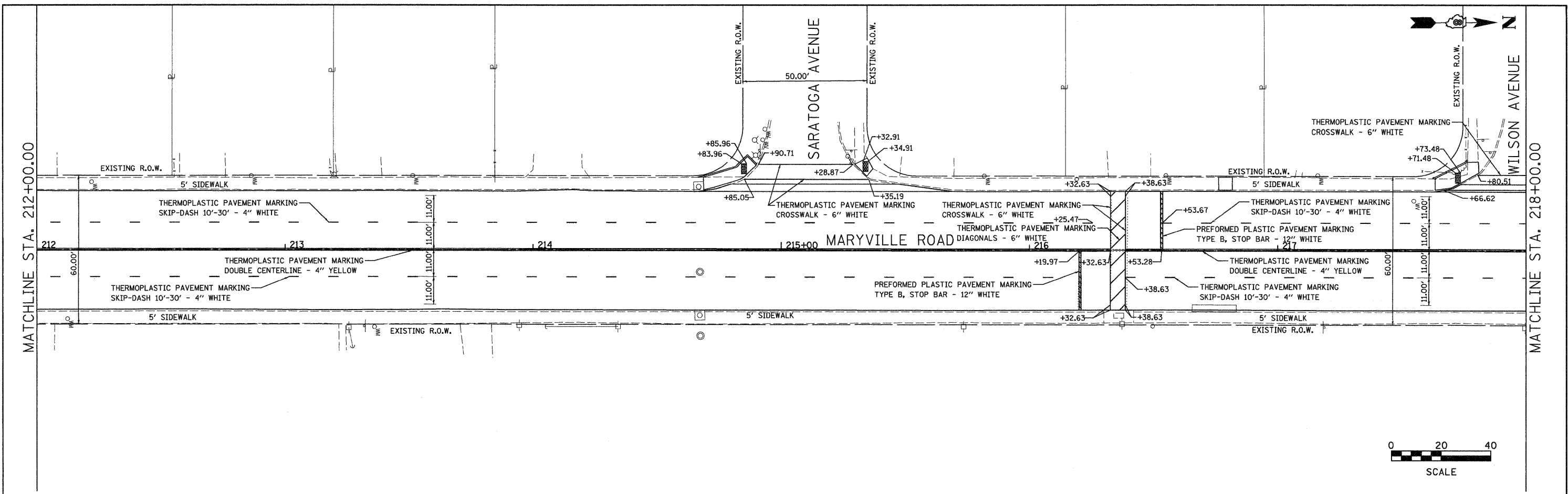
- PATCHES, CLASS B, TYPE II, 10"
- PATCHES, CLASS B, TYPE III, 10"
- PATCHES, CLASS B, TYPE IV, 10"



421.35	421.47	421.65	421.76	421.95	422.05	422.12	422.28	422.29	422.45	422.35	422.49	422.30	422.47	422.25	422.37	422.07	422.20	421.89	422.03	421.72	421.86	421.55	421.69	421.38	421.52	421.27	421.33	421.14	421.00	420.92	420.87	420.82	420.79	420.76			
224+00										225+00					226+00																						
FILE NAME =		USER NAME = Iko		DESIGNED - BFK		REVISED -																															
#FILE#				DRAWN - JDH		REVISED -																															
		PLOT SCALE = #SCALE#		CHECKED - BFK		REVISED -																															
		PLOT DATE = 9/3/2009		DATE - 4/8/09		REVISED -																															
CITY OF GRANITE CITY MARYVILLE ROAD															PLAN AND PROFILE																						
SCALE: 1" = 20'															SHEET NO. 5 OF 5 SHEETS																						
STA. 224+00.00 TO STA. 228+00.00															F.A.U. RTE. 9080 SECTION 09-00190-00-RS COUNTY MADISON TOTAL SHEETS 20 SHEET NO. 16																						
															CONTRACT NO. 97401																						
															FED. ROAD DIST. NO. ILLINOIS FED. AID PROJECT																						



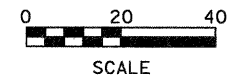
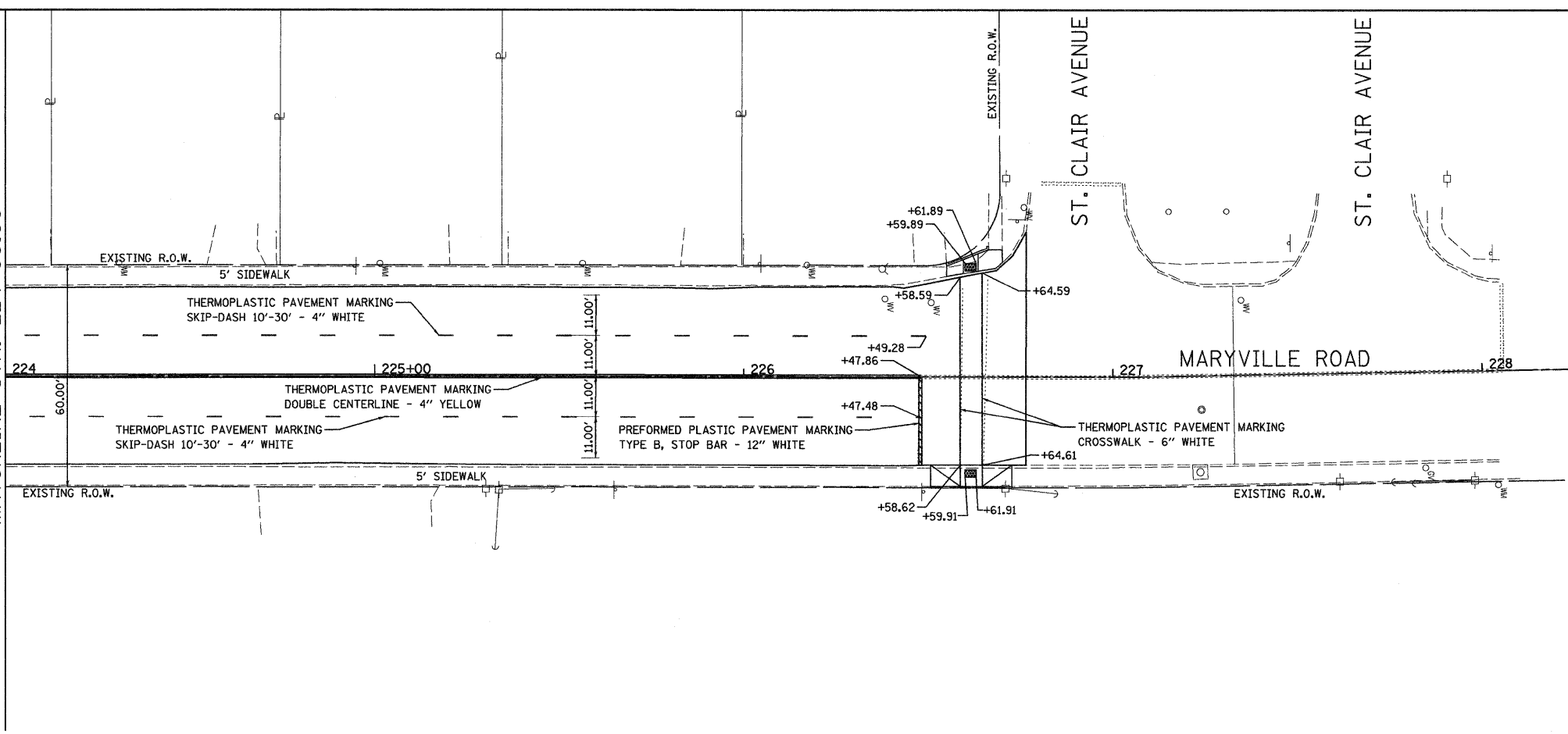
FILE NAME =	USER NAME = lka	DESIGNED - BFK	REVISED -	CITY OF GRANITE CITY MARYVILLE ROAD	PAVEMENT MARKINGS			F.A.I. RTE. 9080	SECTION 09-00190-00-RS	COUNTY MADISON	TOTAL SHEETS 20	SHEET NO. 17
\$FILEL\$		DRAWN - DDN	REVISED -		SCALE: 1"=20'	SHEET NO. 1 OF 3 SHEETS	STA. 200+00.00 TO STA. 212+00.00	FED. ROAD DIST. NO.	ILLINOIS	FED. AID PROJECT	CONTRACT NO. 97401	
		CHECKED - BFK	REVISED -									
		DATE - 4/22/09	REVISED -									



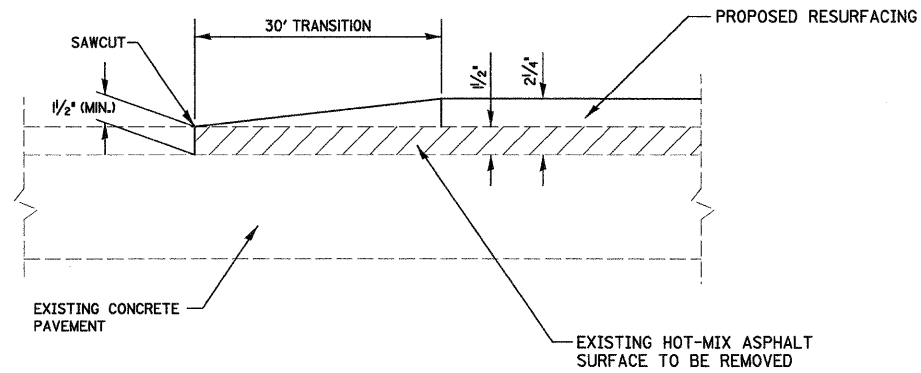
FILE NAME =	USER NAME = ik6	DESIGNED - BFK	REVISED -	CITY OF GRANITE CITY MARYVILLE ROAD	PAVEMENT MARKINGS		F.A.U. RTE. 9080	SECTION 09-00190-00-RS	COUNTY MADISON	TOTAL SHEETS 20	SHEET NO. 18
#FILE#		DRAWN - DDN	REVISED -		SCALE: 1"=20'	SHEET NO. 2 OF 3 SHEETS	STA. 212+00.00 TO STA. 224+00.00	CONTRACT NO. 97401		FED. ROAD DIST. NO. [ILLINOIS] FED. AID PROJECT	
		CHECKED - BFK	REVISED -								
		DATE - 4/22/09	REVISED -								



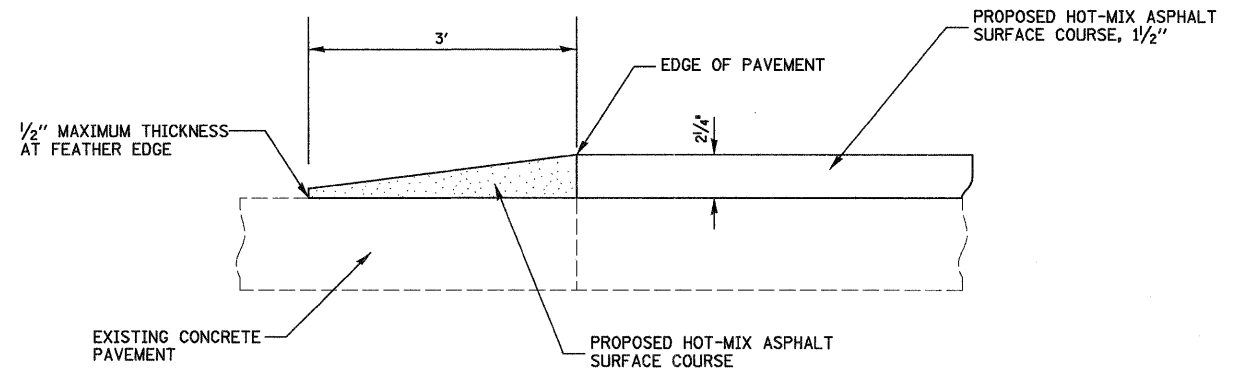
MATCHLINE STA. 224+00.00



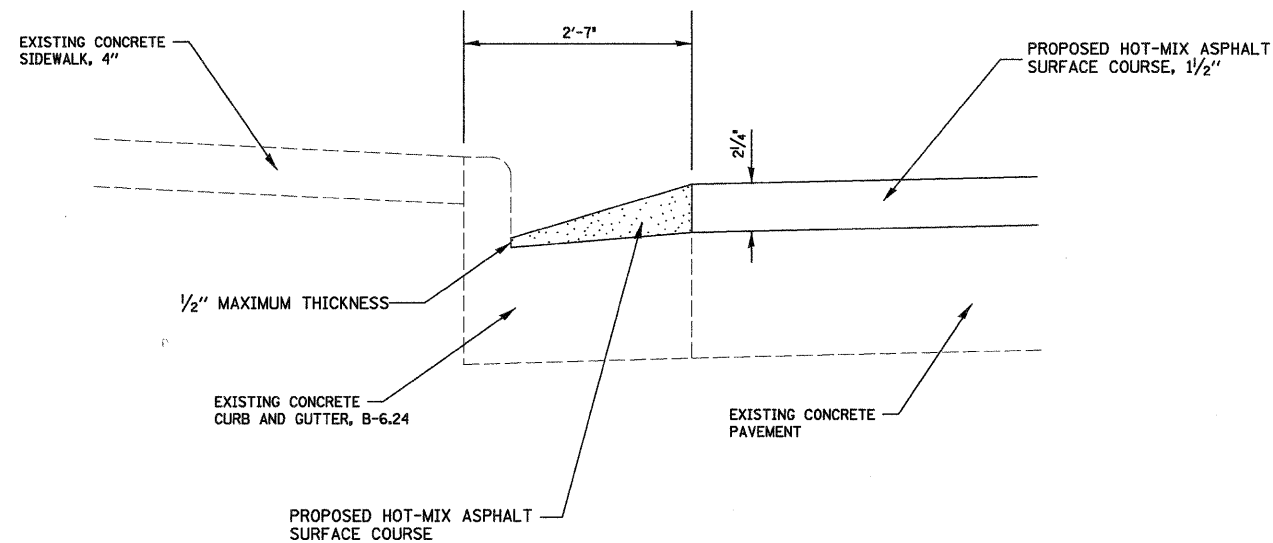
FILE NAME = #FILEL#	USER NAME = Jke	DESIGNED - BFK	REVISED -	CITY OF GRANITE CITY MARYVILLE ROAD	PAVEMENT MARKINGS		F.A.U. RTE. 9080	SECTION 09-00190-00-RS	COUNTY MADISON	TOTAL SHEETS 20	SHEET NO. 19			
	PLOT SCALE = #SCALE#	CHECKED - BFK	REVISED -				SCALE: 1"=20'		SHEET NO. 3 OF 3 SHEETS		STA. 224+00.00 TO STA. 228+00.000		CONTRACT NO. 97401	
	PLOT DATE = 9/3/2009	DATE - 4/22/09	REVISED -				FED. ROAD DIST. NO.		ILLINOIS FED. AID PROJECT					



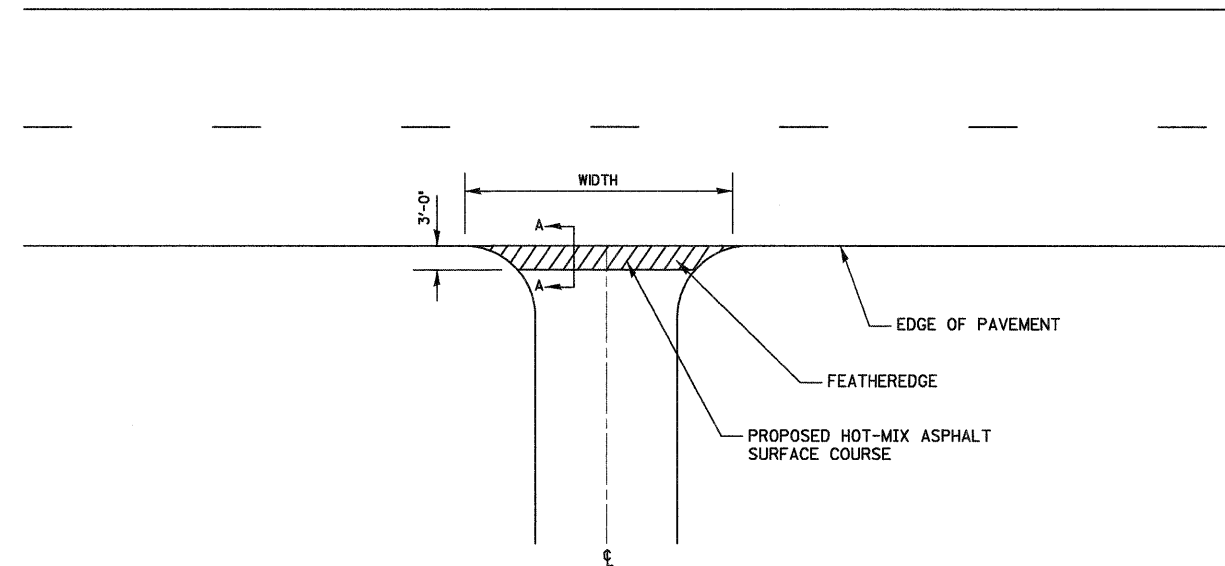
BUTT JOINT DETAIL
N.T.S.



FEATHEREDGE DETAIL
SECTION A-A



CURB AND GUTTER DETAIL
N.T.S.



FEATHEREDGE JOINT DETAIL - LOCATED AT EXISTING CONCRETE ROADWAY TERMINI
N.T.S.

FILE NAME =	USER NAME = jke	DESIGNED - BFK	REVISED -	CITY OF GRANITE CITY MARYVILLE ROAD	MISCELLANEOUS DETAILS		F.A.U. RTE. 9080	SECTION 09-00190-00-RS	COUNTY MADISON	TOTAL SHEETS 20	SHEET NO. 20	
FILEL	PLOT SCALE = *SCALE*	DRAWN - JDH	REVISED -		SCALE: N.T.S.	SHEET NO. 1 OF 1 SHEETS	STA.	TO STA.	CONTRACT NO. 97401			
	PLOT DATE = 9/3/2009	CHECKED - BFK	REVISED -						ILLINOIS FED. AID PROJECT			
		DATE - 4/21/09	REVISED -									