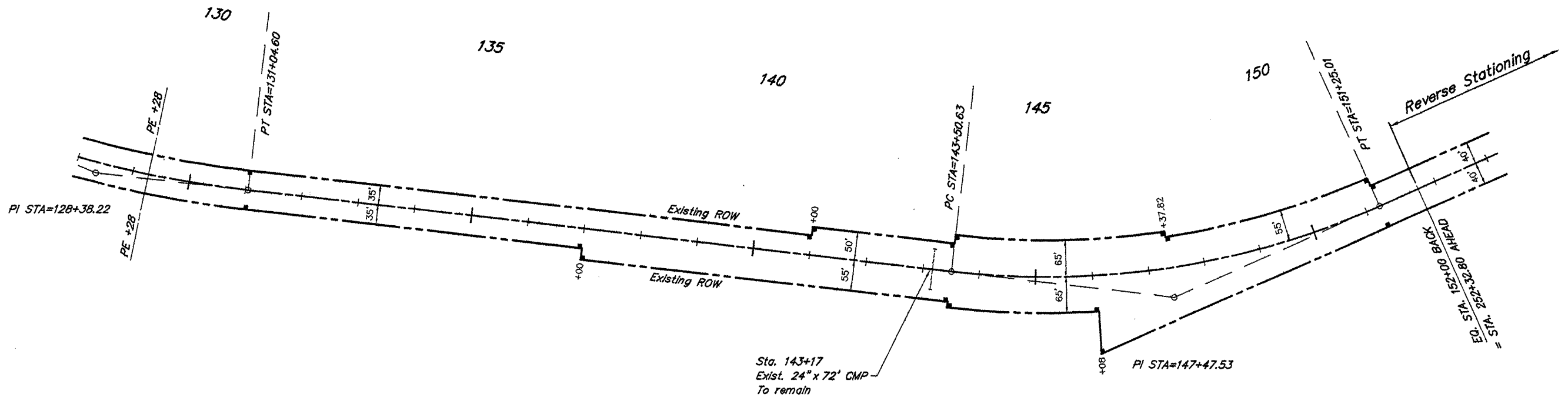
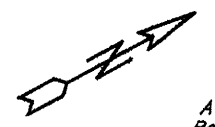


ROUTE	SECTION	COUNTY	TOTAL SHEETS	SHEET NO.
FAS 898	05-00139-00-RS	SALINE	15	9
PROJECT NO. ARA-RS-898 (107)			CONTRACT NO. 99398	

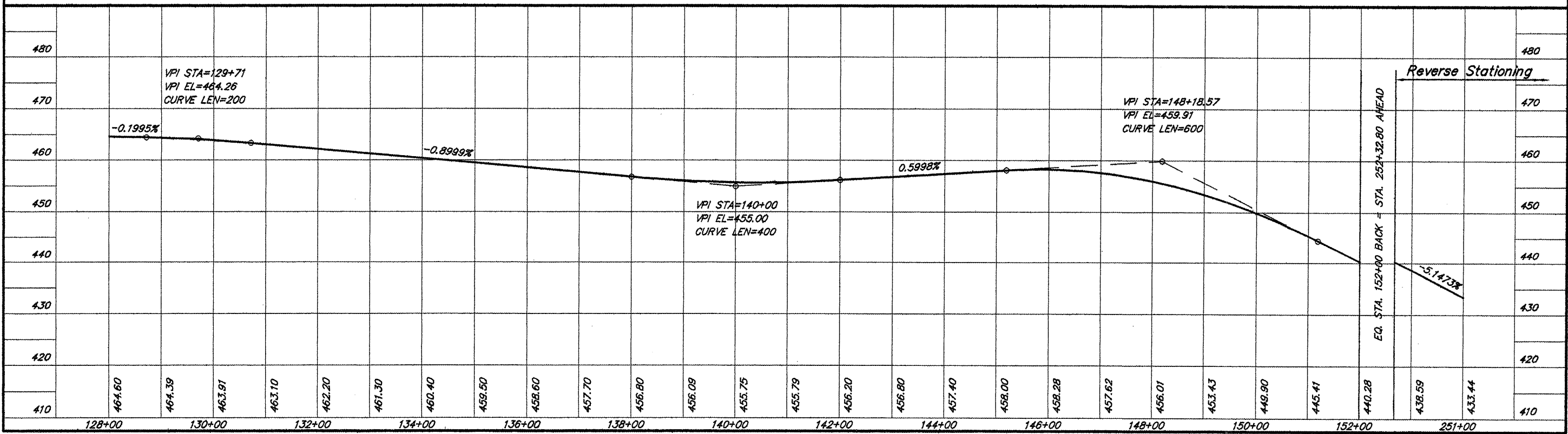
CURVE DATA
 $\Delta = 16^{\circ}05'20''$ $T = 269.92'$
 $D = 3^{\circ}00'00''$ $L = 536.30'$
 $R = 1909.86'$ $E = 18.98'$
 $S.E. = 0.053'/ft.$
 Attain Sta. 124+57 to Sta. 126+07
 Remove Sta. 130+66 to Sta. 132+16

CURVE DATA
 $\Delta = 30^{\circ}58'30''$ $T = 396.90'$
 $D = 4^{\circ}00'00''$ $L = 774.38'$
 $R = 1432.40'$ $E = 53.97'$
 $S.E. = 0.064'/ft.$
 Attain Sta. 142+23 to Sta. 143+97
 Remove Sta. 150+78 to Sta. -251+81



SCALES:
 1" = 200' HOR
 1" = 20' VER

563 PPO6 05/27/09 10:58 RLM



PLAN & PROFILE STA. 128+00 - STA. 251+00