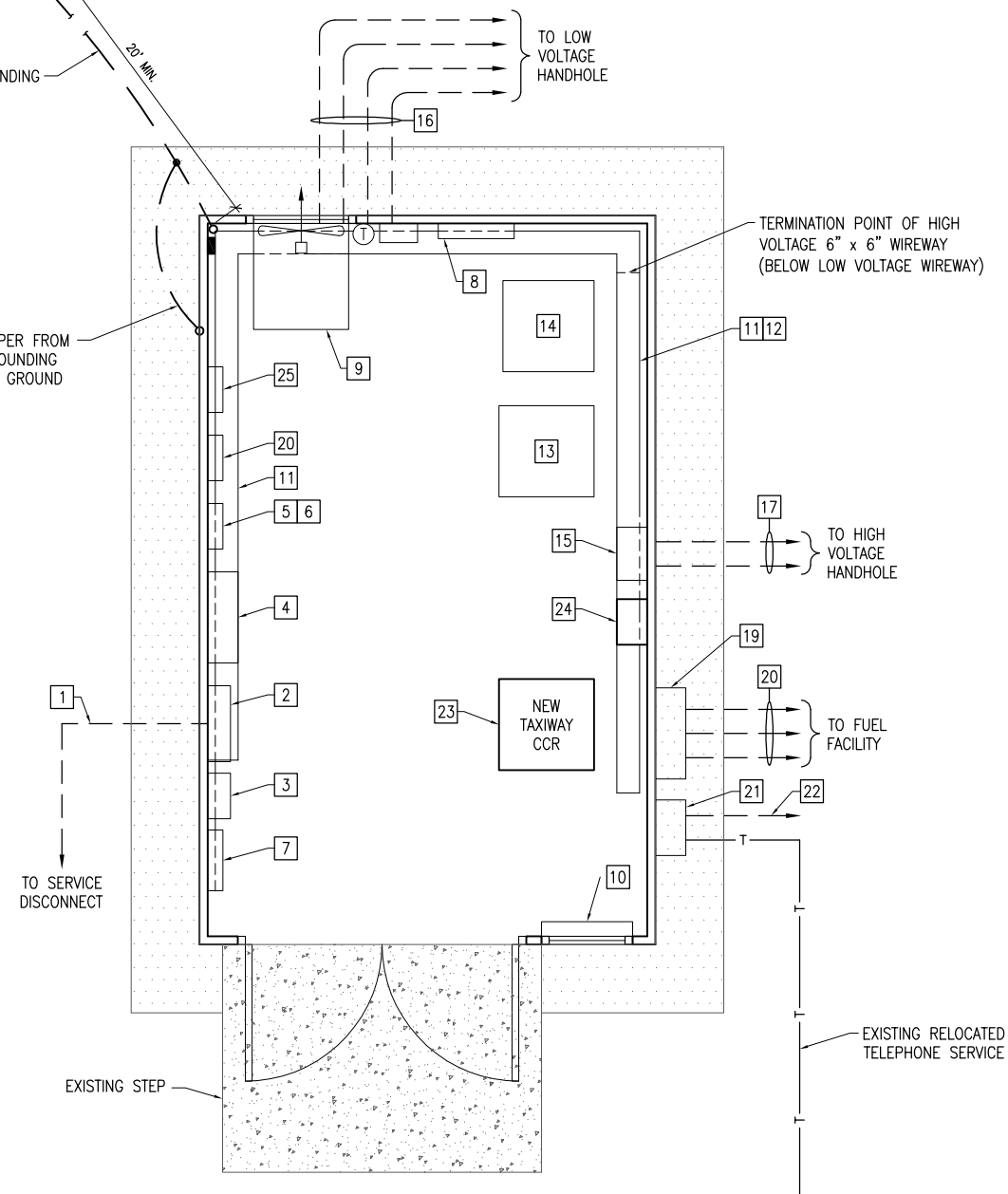


EXISTING 3/4" x 80' UL LISTED COPPERCLAD GND ROD. CONNECTIONS TO GND RODS SHALL BE EXOTHERMIC WELD.

EXISTING #2 AWG COPPER GROUNDING ELECTRODE CONDUCTOR

EXISTING #2 AWG BARE COPPER FROM BUILDING STEEL SKID TO GROUNDING ELECTRODE CONDUCTOR FOR GROUND ROD.



**VAULT ELECTRICAL EQUIPMENT PLAN**  
 SCALE 1/2"=1'-0"  
 1 0 2 4 FEET

**GENERAL NOTES**

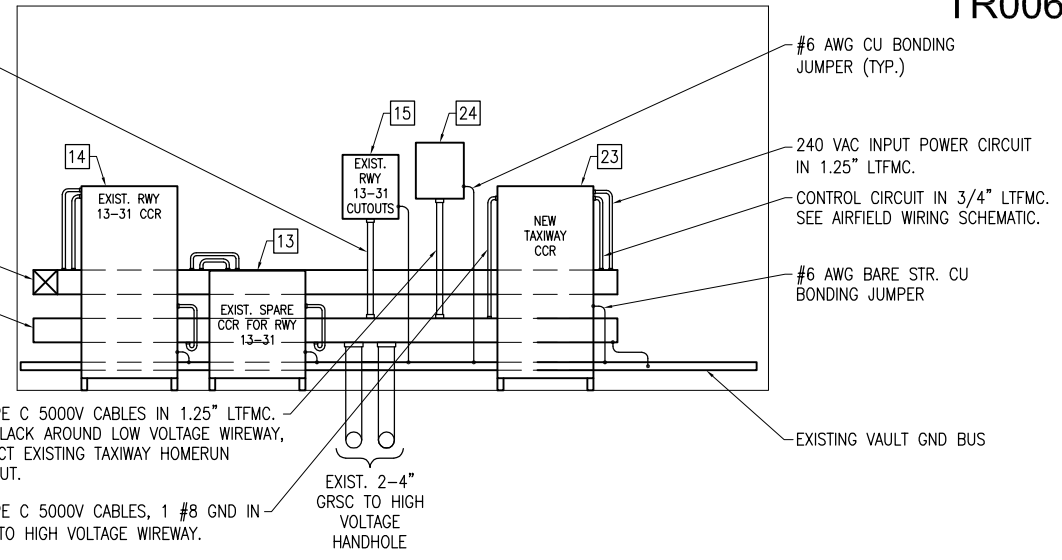
- SEE "NEW ELECTRICAL ONE LINE DIAGRAM FOR VAULT" FOR LOW VOLTAGE INPUT POWER WIRING REQUIREMENTS TO TAXIWAY CCR (CONSTANT CURRENT REGULATOR). SEE "HIGH VOLTAGE WIRING SCHEMATIC" FOR CCR OUTPUT WIRING REQUIREMENTS. SEE "AIRFIELD LIGHTING WIRING SCHEMATIC" FOR CCR CONTROL WIRING REQUIREMENTS. PROVIDE 5 FEET MINIMUM CLEAR WORKING SPACE IN FRONT OF EACH CCR AND EACH SERIES PLUG CUTOUT.
- CONSTANT CURRENT REGULATORS AND THEIR RESPECTIVE SERIES PLUG CUTOUPS SHALL BE CLEARLY LABELED TO IDENTIFY THE RESPECTIVE REGULATOR DESIGNATION, RUNWAY OR TAXIWAY SERVED, POWER SOURCE OR CIRCUIT, AND VOLTAGE SYSTEM.
- SEE ELEVATION VIEWS FOR ADDITIONAL INFORMATION ON PROPOSED EQUIPMENT LAYOUTS.
- MAINTAIN SEPARATION OF HIGH VOLTAGE AND LOW VOLTAGE CIRCUITS. LOW VOLTAGE WIRING SHALL ENTER THE RESPECTIVE CCR AT THE LOW VOLTAGE SECTION. HIGH VOLTAGE WIRING SHALL ENTER THE RESPECTIVE CCR AT THE HIGH VOLTAGE SECTION

CONNECT NEW HOMERUN CABLES TO EXISTING CUTOUPS FOR RHW 13-31 LIGHTING CIRCUIT

EXISTING LOW VOLTAGE 6" x 6" WIREWAY  
 EXISTING HIGH VOLTAGE 6" x 6" WIREWAY

4 #8 FAA L-824, TYPE C 5000V CABLES IN 1.25" LTFMC. PROVIDE SUFFICIENT SLACK AROUND LOW VOLTAGE WIREWAY, FOR ACCESS. CONNECT EXISTING TAXIWAY HOMERUN CABLES TO NEW CUTOUT.

2 #8 FAA L-824, TYPE C 5000V CABLES, 1 #8 GND IN 1" LTFMC FROM CCR TO HIGH VOLTAGE WIREWAY.



**VAULT EAST WALL ELEVATION**  
 SCALE 1/2"=1'-0"  
 1 0 2 4 FEET

**KEYED NOTES**

- EXISTING 120/240 VAC, 1PH, 3W FEEDER FROM SERVICE BREAKER TO VAULT PANEL.
- EXISTING VAULT PANELBOARD.
- EXISTING AC SURGE PROTECTOR/TVSS.
- EXISTING RELAY/LIGHTING CONTACTOR PANEL. USE SPARE CONTACTORS TO POWER APRON LIGHTING CIRCUITS NO. 1 & NO. 2.
- EXISTING L-854 RADIO CONTROL UNIT WITH RELAY INTERFACE PANEL BELOW.
- EXISTING RELAY INTERFACE PANEL FOR RUNWAY 13-31 (BELOW L-854 RADIO CONTROL UNIT).
- EXISTING ELECTRIC WALL HEATER EH-1.
- EXISTING ELECTRIC WALL HEATER EH-2.
- EXISTING EXHAUST FAN EF-1.
- EXISTING INTAKE LOUVER L-1.
- EXISTING 6" BY 6" LOW VOLTAGE WIREWAY.
- EXISTING 6" BY 6" HIGH VOLTAGE WIREWAY.
- EXISTING SPARE/BACKUP CCR FOR RUNWAY 13-31.
- EXISTING RUNWAY 13-31 CONSTANT CURRENT REGULATOR.
- EXISTING SERIES PLUG CUTOUPS IN A NEMA 12 ENCLOSURE WITH HINGED COVER, FOR RHW 13-31 LIGHTING CIRCUIT. DISCONNECT EXISTING HOMERUN CONDUCTORS FROM LOAD SIDE OF RHW 13-31 CUTOUPS AND RECONNECT THESE CONDUCTORS TO THE TAXIWAY CUTOUT. TERMINATE THE NEW RHW 13-31 HOMERUN CONDUCTORS ON THE LOAD SIDE OF THE EXISTING CUTOUPS.
- EXISTING 4-4" GRSC FROM LOW VOLTAGE WIREWAY TO DUCT BANK. INSTALL APRON LIGHTING CIRCUITS IN SPARE DUCT.
- EXISTING 2-4" GRSC FROM HIGH VOLTAGE WIREWAY TO HIGH VOLTAGE HANDHOLE. INSTALL RHW 13-31 HOMERUN CABLES IN SPARE HIGH VOLTAGE CONDUIT.
- EXISTING FUEL FACILITY LOAD CENTER.
- EXISTING NEMA 4X SS J-BOX FOR FUEL FACILITY CIRCUITS.
- EXISTING FUEL FACILITY CIRCUITS IN 3/4" GRSC.
- EXISTING RELOCATED TELEPHONE NETWORK INTERFACE BOX.
- EXISTING TELEPHONE CABLE IN 3/4" GRSC TO FUEL SYSTEM CONTROLLER.
- NEW TAXIWAY CONSTANT CURRENT REGULATOR. SEE GENERAL NOTE 1.
- NEW SERIES PLUG CUTOUT, TYPE S-1 IN A NEMA 1 OR NEMA 12 ENCLOSURE WITH HINGED COVER, FOR TAXIWAY LIGHTING CIRCUIT.
- NEW RELAY INTERFACE PANEL FOR TAXIWAY CCR. SEE AIRFIELD LIGHTING WIRING SCHEMATIC FOR WIRING REQUIREMENTS. INSTALL RELAY CONTROL PANEL FOR APRON LIGHTING & TAXIWAY PHOTOCCELL INTERFACE ABOVE OR BELOW RELAY INTERFACE PANEL FOR TAXIWAY CCR

BY	
REVISION	
DATE	

TRI-TOWNSHIP AIRPORT  
 SAVANNA, CARROLL COUNTY  
 ILLINOIS

IL. PROJ.: SFY-3932  
 A.I.P. PROJ.: 3-17-09-1-B15

Hanson Project No. 09A0033D_0800	
Filename E-101.DWG	
Scale NOT TO SCALE	
Date 08/14/09	
LAYOUT	KNL 08/11/09
DRAWN	MV 08/11/09
REVIEWED	CAH 08/11/09

**HANSON**

Hanson Professional Services Inc.  
 1525 South Sixth Street  
 Springfield, Illinois 62703-2886  
 Chicago Nationwide

REPLACE MITL SYS.,  
 INSTALL APRON LTS

VAULT FLOOR PLAN  
 & ELEVATIONS