

SUMMARY OF QUANTITIES			TOTAL QUANTITIES	90% FED 10% STATE CONSTRUCTION TYPE CODE		
CODE NO	ITEM	UNIT		0004	0004 FARINA RAMPS	0014 SN 026-0083 SN 026-0084
* 78004230	PREFORMED PLASTIC PAVEMENT MARKING, TYPE B - INLAID - LINE 6"	FOOT	22253	22253		
* 78100100	RAISED REFLECTIVE PAVEMENT MARKER	EACH	2439	2277	162	
* 78200410	GUARDRAIL MARKERS, TYPE A	EACH	104	104		
* 78201000	TERMINAL MARKER - DIRECT APPLIED	EACH	26	26		
X4401198	HOT-MIX ASPHALT SURFACE REMOVAL, VARIABLE DEPTH	SQ YD	22400	22400		
X4406235	PARTIAL DEPTH REMOVAL, TYPE II, 3.5"	SQ YD	283	283		
X4406435	PARTIAL DEPTH REMOVAL, TYPE III, 3.5"	SQ YD	390	390		
X4406635	PARTIAL DEPTH REMOVAL, TYPE IV, 3.5"	SQ YD	14163	14163		
X4421000	PARTIAL DEPTH PATCHING	TON	2908	2908		
X5860110	GRANULAR BACKFILL FOR STRUCTURES	CU YD	48		48	
* X6310214	TRAFFIC BARRIER TERMINAL, TYPE 6 (SPECIAL)	EACH	14	14		
X6350120	DELINEATOR REMOVAL	EACH	371	217	154	
X7010410	SPEED DISPLAY TRAILER	CAL MO	14	14		

SUMMARY OF QUANTITIES				90% FED 10% STATE CONSTRUCTION TYPE CODE		
CODE NO	ITEM	UNIT	TOTAL QUANTITIES	0004	0004 FARINA RAMPS	0014 SN 026-0083 SN 026-0084
X7015005	CHANGEABLE MESSAGE SIGN	CAL DA	56	56		
* X7830070	GROOVING FOR RECESSED PAVEMENT MARKING 5"	FOOT	203896	197425.6	6470.4	
* X7830074	GROOVING FOR RECESSED PAVEMENT MARKING 7"	FOOT	443	443		
* X7830076	GROOVING FOR RECESSED PAVEMENT MARKING 9"	FOOT	3568		3568	
* X7830078	GROOVING FOR RECESSED PAVEMENT MARKING 13"	FOOT	383	177	206	
* X7830084	GROOVING FOR RECESSED PAVEMENT MARKING 19"	FOOT	72	72		
* X7830090	GROOVING FOR RECESSED PAVEMENT MARKING 25"	FOOT	76		76	
Z0004552	APPROACH SLAB REMOVAL	SQ YD	216			216
Z0012113	BRIDGE DECK FLY ASH OR GGBF SLAG CONCRETE OVERLAY, 3	SQ YD	1220			1220
Z0012148	BRIDGE DECK SCARIFICATION 3"	SQ YD	1220			1220
Z0012500	CONCRETE CURB REPAIR	FOOT	100	100		
Z0012754	STRUCTURAL REPAIR OF CONCRETE (DEPTH EQUAL TO OR LESS THAN 5 INCHES)	SQ FT	5			5
Z0016001	DECK SLAB REPAIR (FULL DEPTH, TYPE I)	SQ YD	22			22

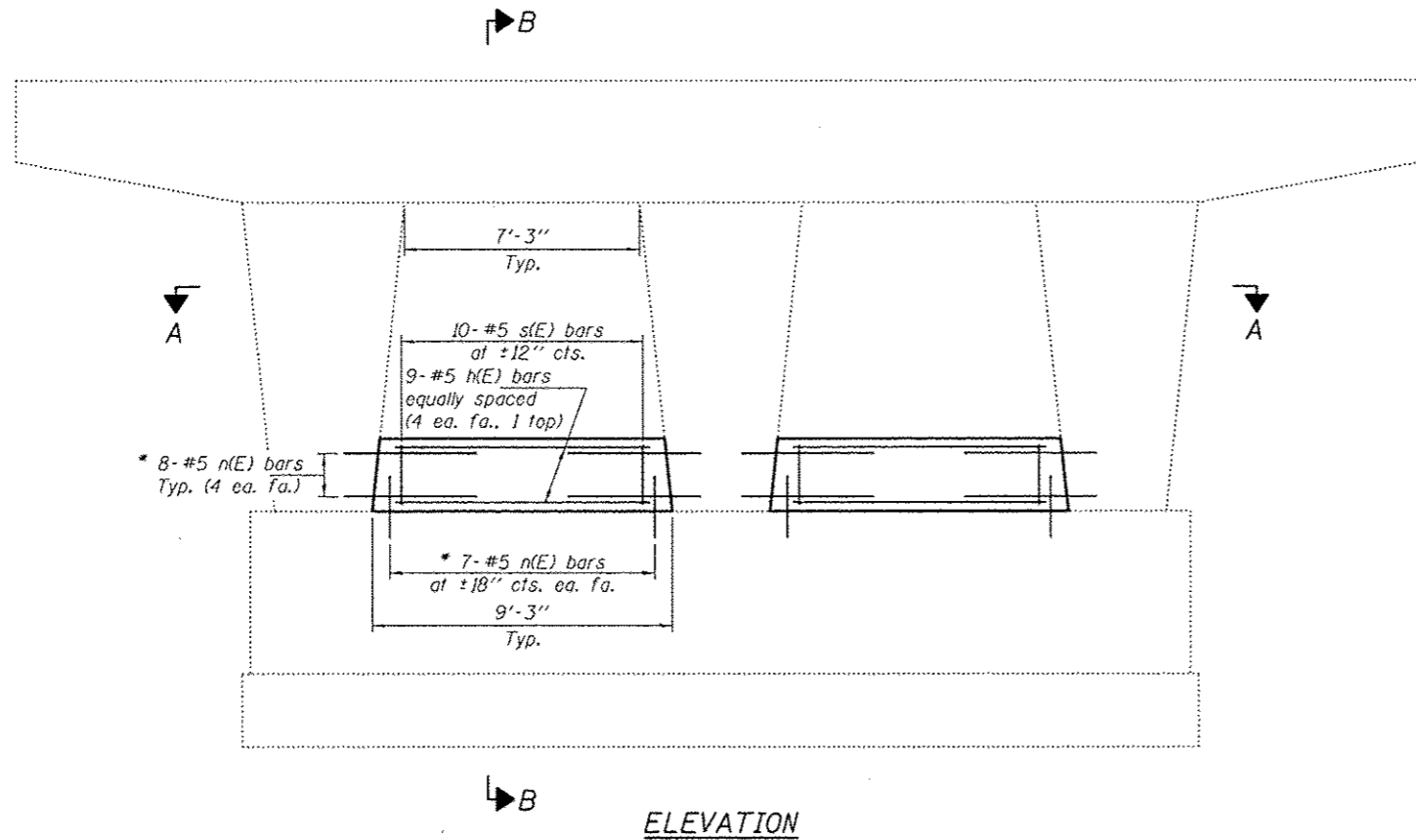
* SPECIALTY ITEM

△ REVISED 10-20-15

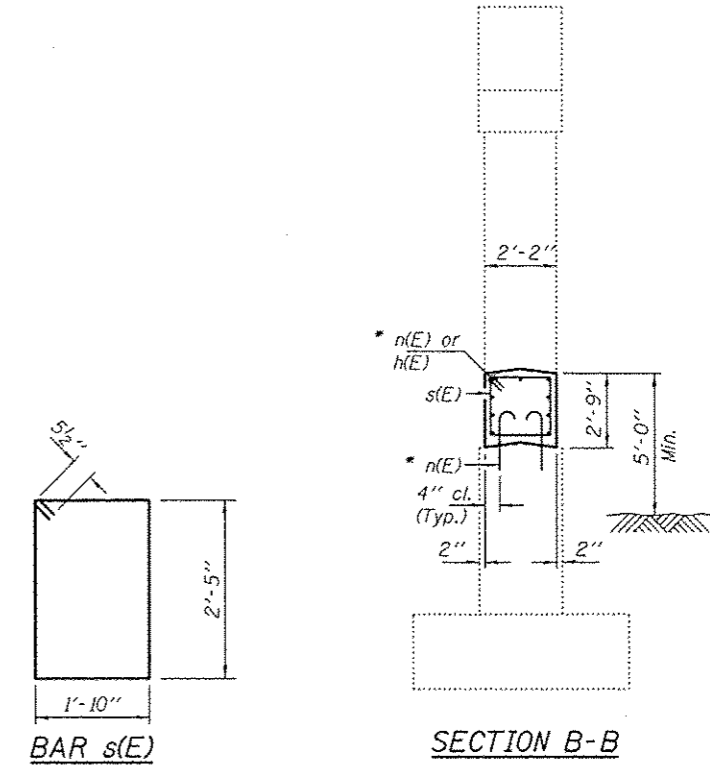
FILE NAME =	USER NAME = staffernk	DESIGNED -	REVISED -	STATE OF ILLINOIS DEPARTMENT OF TRANSPORTATION	SUMMARY OF QUANTITIES	F.A.I. RTE.	SECTION	COUNTY	TOTAL SHEETS	SHEET NO.
path\11846RIDINTEC\Illinois.gov\PIDOT\Documents\DOT Offices\District 7\Projects\7457\Drawings\CAD\Sheets\0774573-sht-001.dgn	DRAMA	CHECKED -	REVISED -			57	126-21RS-2	FAYETTE	56	7
PLOT SCALE = 1/8" = 1' / 1" / 1"		DATE -	REVISED -			CONTRACT NO. 74573				
Default						ILLINOIS FED. AID PROJECT				

NOTES

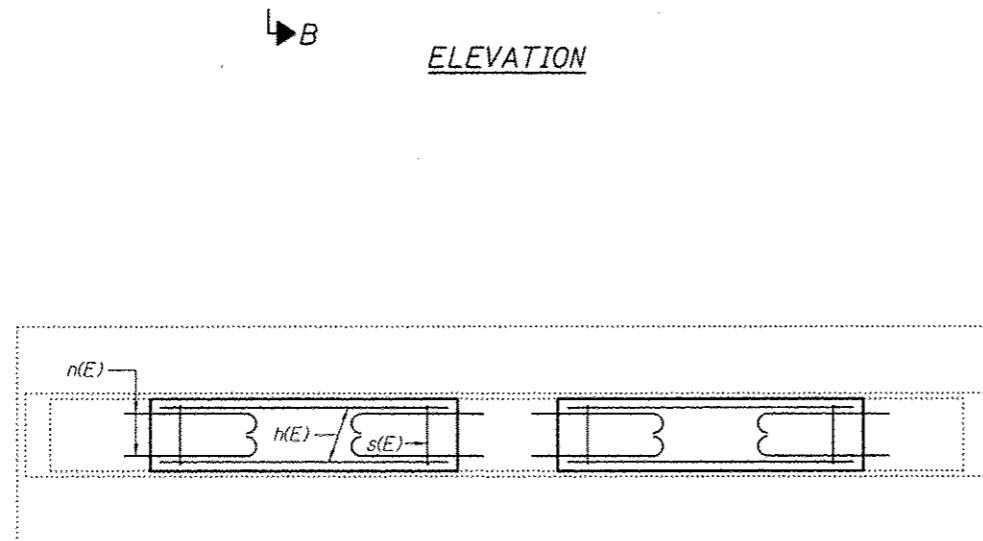
The cost of epoxy grouting threaded rods shall be included with Reinforcement Bars. Epoxy Coated.
 Plan dimensions and details relative to existing plans are subject to nominal construction variations. The Contractor shall field verify existing dimensions and details affecting new construction and make necessary approved adjustments prior to construction or ordering of materials. Such variations shall not be cause for additional compensation for a change in scope of the work, however, the Contractor will be paid for the quantity actually furnished at the unit price bid for the work.
 Reinforcement bars designated (E) shall be epoxy coated.



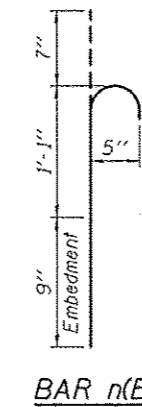
ELEVATION



SECTION B-B



SECTION A-A



BAR n(E)

* Epoxy grout n(E) bars in 9" min. holes according to Article 584 of the Standard Specifications.

BILL OF MATERIAL

Bar	No.	Size	Length	Shape
h(E)	36	#5	8'-5"	—
n(E)	120	#5	2'-5"	⌋
s(E)	40	#5	9'-5"	□
Concrete Structures			Cu. Yd.	7.9
Reinforcement Bars, Epoxy Coated			Pound	1010

△ REVISED SHEET 10-20-15



DESIGNED: *David Carl Puzey*
 CHECKED: *Vicki K. DeLoe*
 DRAWN: *dalina*
 CHECKED: *DP*

PASSED: *David Carl Puzey*
 ACTING ENGINEER OF BRIDGES AND STRUCTURES

DATE: OCTOBER 20, 2015
 REVISED: *10/20/15 VHW*
 REVISED:

STATE OF ILLINOIS
 DEPARTMENT OF TRANSPORTATION

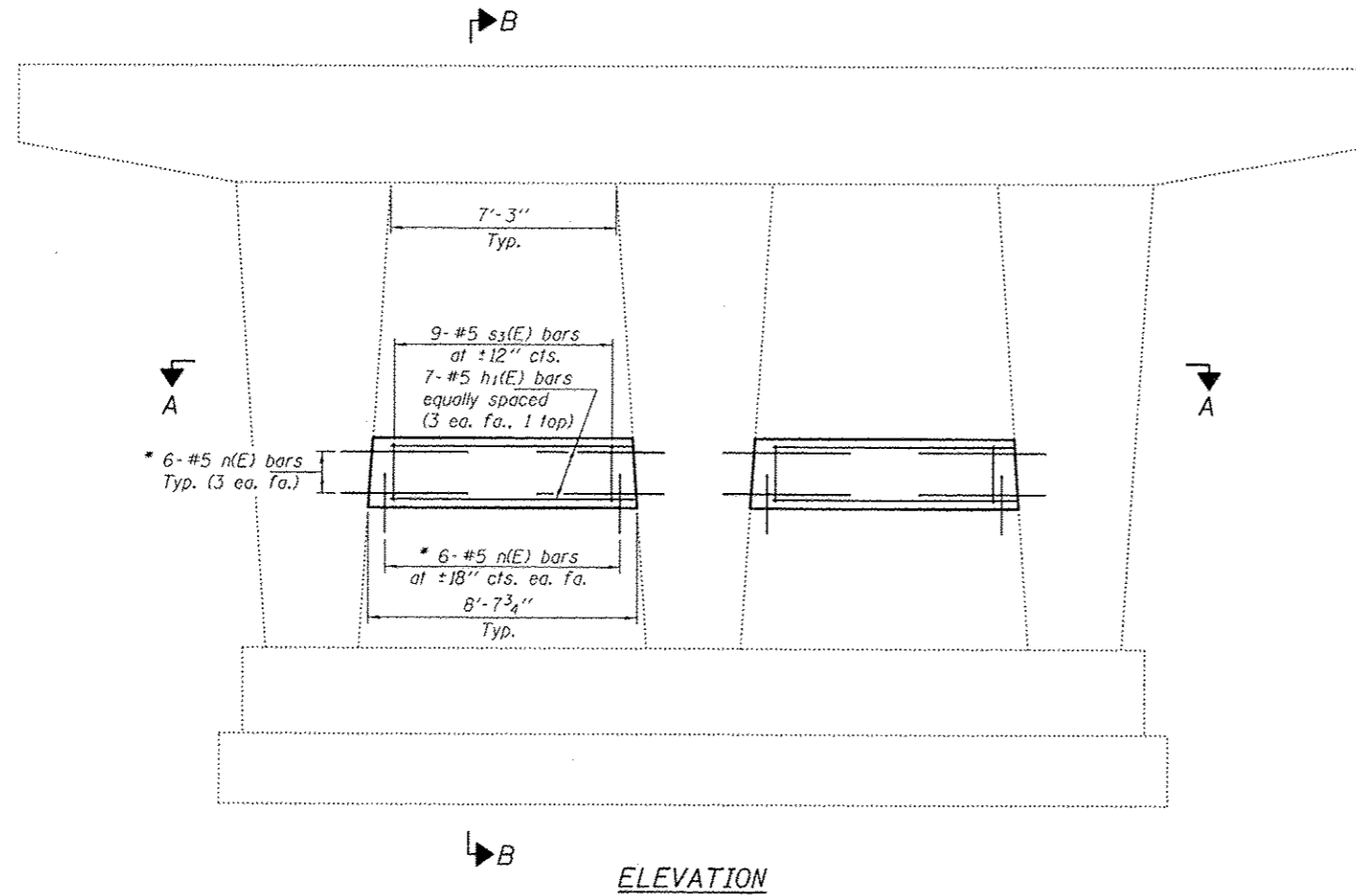
PIERS 1 & 3 CRASHWALL EXTENSION
 SN 026-0053

SHEET NO. 1 OF 2 SHEETS

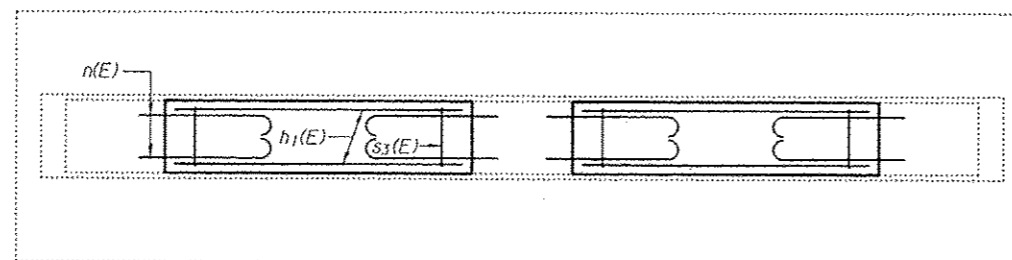
F.A.T. RTE.	SECTION	COUNTY	TOTAL SHEETS	SHEET NO.
57	126-21RS-2	FAYETTE	56	43
CONTRACT NO. 74573			ILLINOIS FED. AID PROJECT	

NOTES

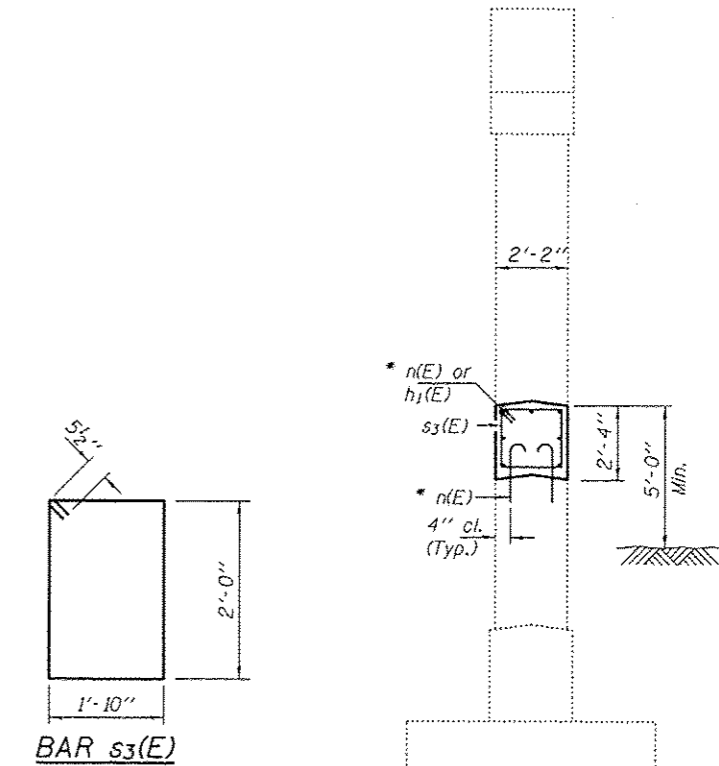
The cost of epoxy grouting threaded rods shall be included with Reinforcement Bars, Epoxy Coated.
 Plan dimensions and details relative to existing plans are subject to nominal construction variations. The Contractor shall field verify existing dimensions and details affecting new construction and make necessary approved adjustments prior to construction or ordering of materials. Such variations shall not be cause for additional compensation for a change in scope of the work, however, the Contractor will be paid for the quantity actually furnished at the unit price bid for the work. Reinforcement bars designated (E) shall be epoxy coated.



ELEVATION

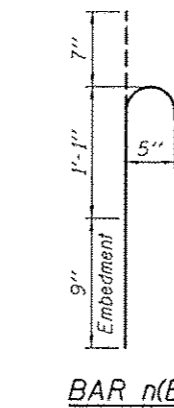


SECTION A-A



SECTION B-B

* Epoxy grout n(E) bars in 9" min. holes according to Article 584 of the Standard Specifications.




BAR n(E)

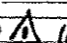
BILL OF MATERIAL

Bar	No.	Size	Length	Shape
h ₁ (E)	14	#5	7'-11"	—
n(E)	48	#5	2'-5"	⌋
s ₃ (E)	18	#5	8'-7"	□
Concrete Structures			Cu. Yd.	3.2
Reinforcement Bars, Epoxy Coated			Pound	400

△ REVISED SHEET 10-20-15

DESIGNED *DAB*
 CHECKED *VHV*
 DRAWN *baliva*
 CHECKED *DAB VHV*

PASSED

 ACTING ENGINEER OF BRIDGES AND STRUCTURES

DATE OCTOBER 20, 2015
 REVISED  10/20/15 *VHV*
 REVISED

STATE OF ILLINOIS
 DEPARTMENT OF TRANSPORTATION

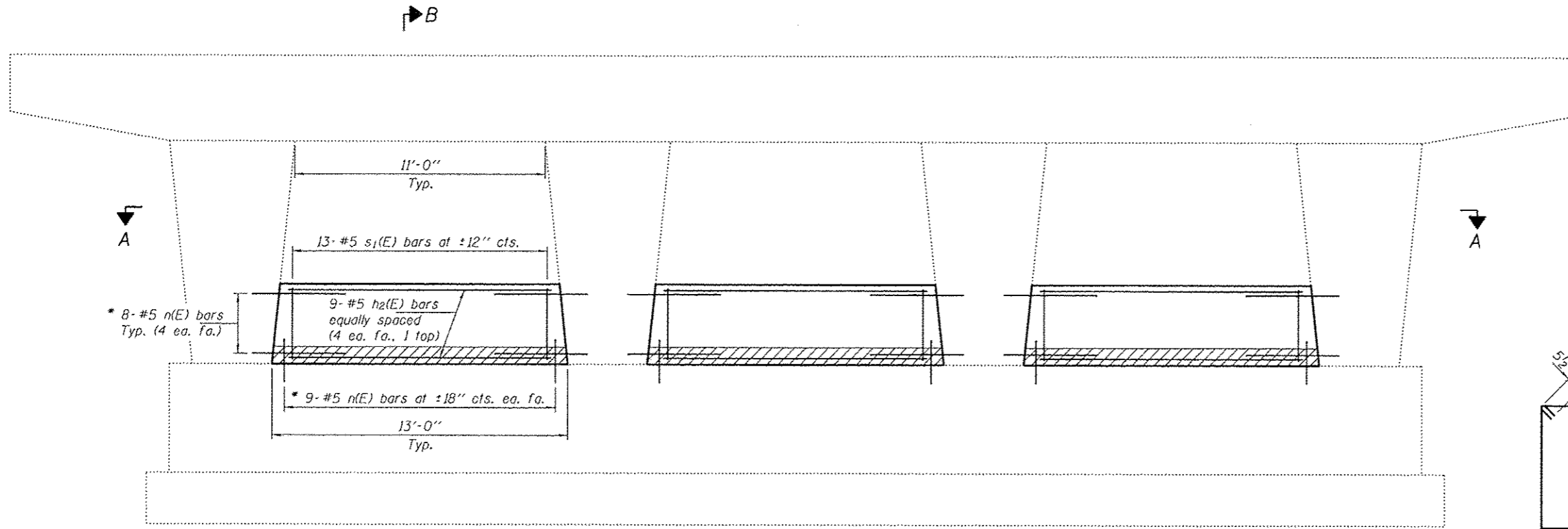
PIER 2 CRASHWALL EXTENSION
 SN 026-0053

SHEET NO. 2 OF 2 SHEETS

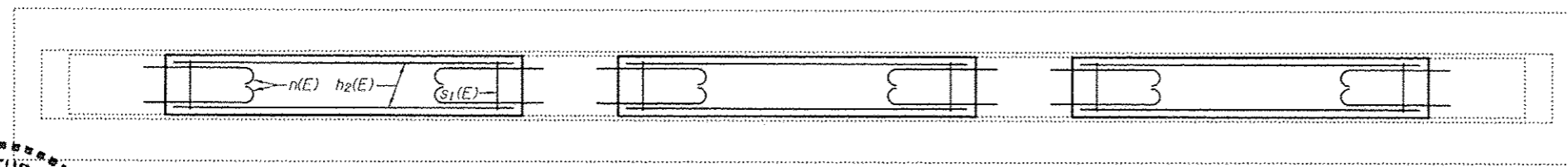
F.A.I. RTE.	SECTION	COUNTY	TOTAL SHEETS	SHEET NO.
57	(26-2)RS-2	FAYETTE	56	44
			CONTRACT NO. 74573	
ILLINOIS FED. AID PROJECT				

NOTES

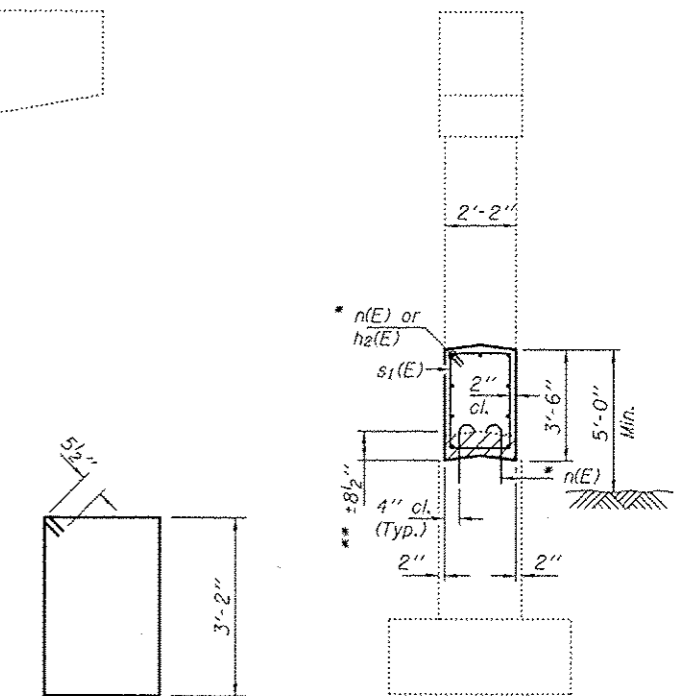
The cost of epoxy grouting threaded rods shall be included with Reinforcement Bars, Epoxy Coated.
 Plan dimensions and details relative to existing plans are subject to nominal construction variations. The Contractor shall field verify existing dimensions and details affecting new construction and make necessary approved adjustments prior to construction or ordering of materials. Such variations shall not be cause for additional compensation for a change in scope of the work, however, the Contractor will be paid for the quantity actually furnished at the unit price bid for the work. Reinforcement bars designated (E) shall be epoxy coated.



ELEVATION



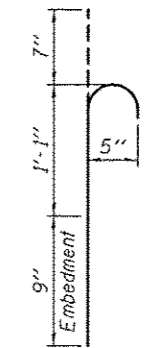
SECTION A-A



SECTION B-B

** Hatched areas indicate removal. Removal to include the entire previous crashwall extension.
 * Epoxy grout n(E) bars in 9" min. holes according to Article 584 of the Standard Specifications.

BAR s1(E)



BAR n(E)

BILL OF MATERIAL

Bar	No.	Size	Length	Shape
h2(E)	54	#5	12'-0"	—
n(E)	204	#5	2'-5"	U
s1(E)	78	#5	10'-11"	□
Concrete Removal			Cu. Yd.	4.2
Concrete Structures			Cu. Yd.	21.3
Reinforcement Bars, Epoxy Coated			Pound	2080



EXPIRES 11-30-2016

DESIGNED: *[Signature]*
 CHECKED: *[Signature]*
 DRAWN: *[Signature]*
 CHECKED: *[Signature]*

PASSED: *[Signature]*
 ACTING ENGINEER OF BRIDGES AND STRUCTURES

DATE: OCTOBER 20, 2015
 REVISED: *[Signature]* 10/20/15 VHV
 REVISED:

STATE OF ILLINOIS
 DEPARTMENT OF TRANSPORTATION

REVISD SHEET 10-20-15

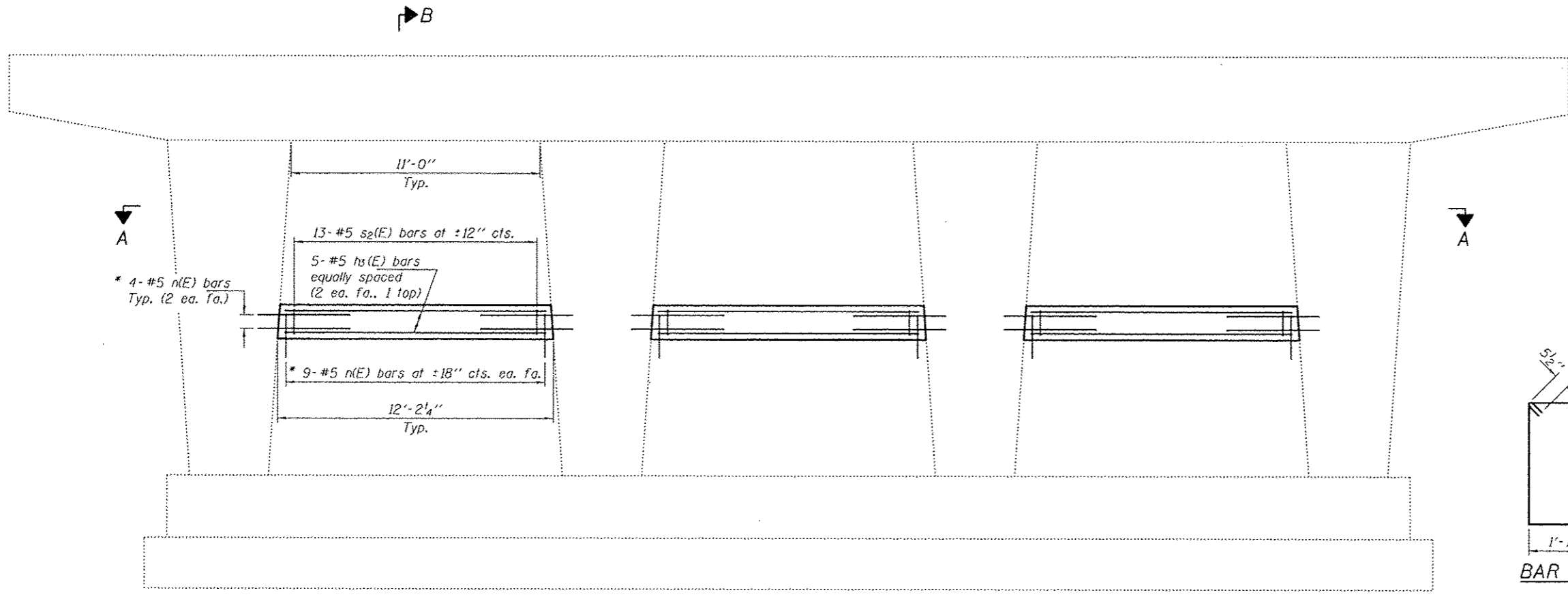
PIERS 1 & 3 CRASHWALL EXTENSION
 SN 026-0071

SHEET NO. 1 OF 2 SHEETS

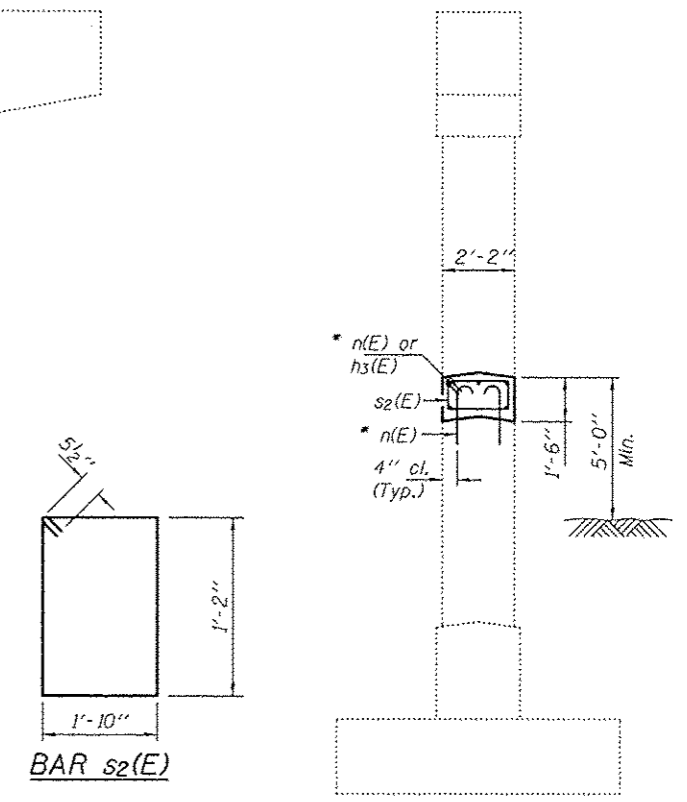
F.A.I. RTE.	SECTION	COUNTY	TOTAL SHEETS	SHEET NO.
57	(26-2)RS-2	FAYETTE	56	45
			CONTRACT NO. 74573	
ILLINOIS FED. AID PROJECT				

NOTES

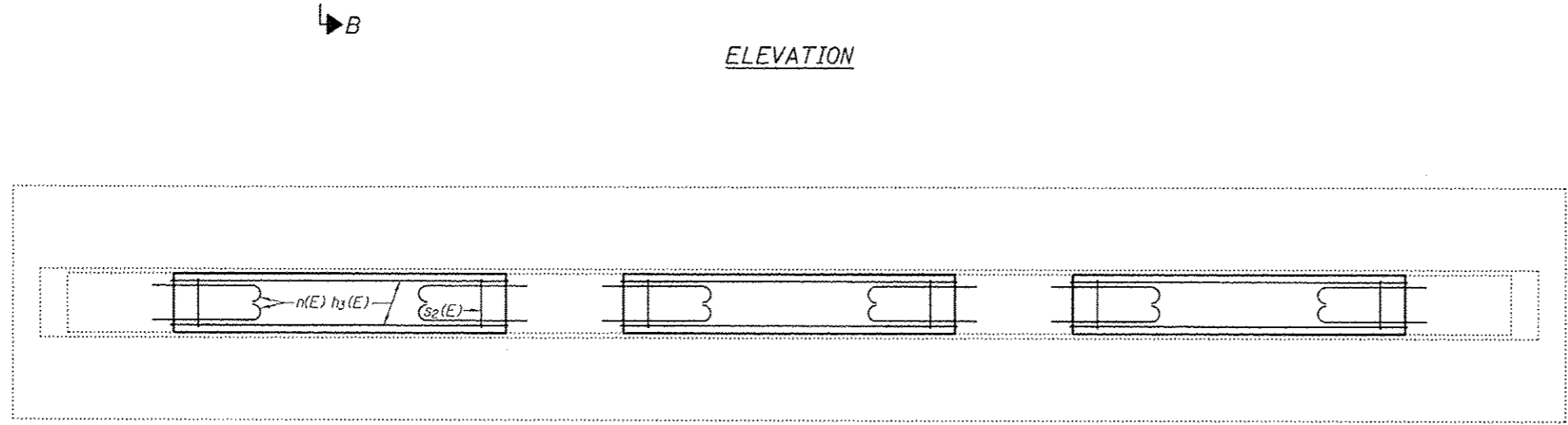
The cost of epoxy grouting threaded rods shall be included with Reinforcement Bars, Epoxy Coated.
 Plan dimensions and details relative to existing plans are subject to nominal construction variations. The Contractor shall field verify existing dimensions and details affecting new construction and make necessary approved adjustments prior to construction or ordering of materials. Such variations shall not be cause for additional compensation for a change in scope of the work, however, the Contractor will be paid for the quantity actually furnished at the unit price bid for the work. Reinforcement bars designated (E) shall be epoxy coated.



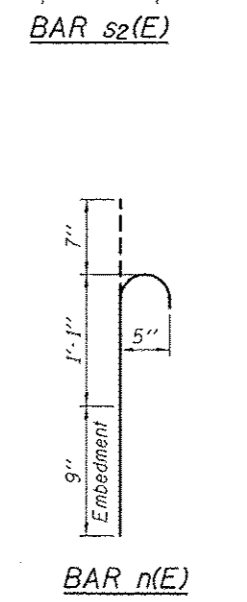
ELEVATION



SECTION B-B



SECTION A-A



* Epoxy grout n(E) bars in 9" min. holes according to Article 584 of the Standard Specifications.

BILL OF MATERIAL

Bar	No.	Size	Length	Shape
h3(E)	15	#5	11'-8"	—
n(E)	78	#5	2'-5"	—
s2(E)	39	#5	6'-11"	□
Concrete Structures			Cu. Yd.	4.4
Reinforcement Bars, Epoxy Coated			Pound	660

REVISD SHEET 10-20-15