

STATE OF ILLINOIS  
DEPARTMENT OF TRANSPORTATION  
DIVISION OF HIGHWAYS

**PROPOSED  
HIGHWAY PLANS**

FAP ROUTE 91 (IL 16)  
SECTION 50-1 TS,L  
PROJECT ACHSIP-0091 (074)  
TRAFFIC SIGNALS  
COLES COUNTY

C-97-030-15

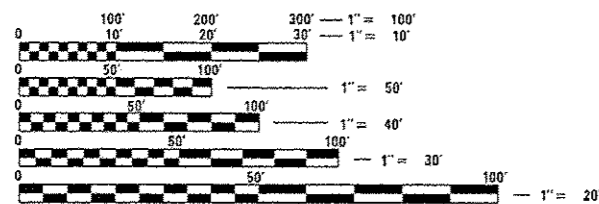
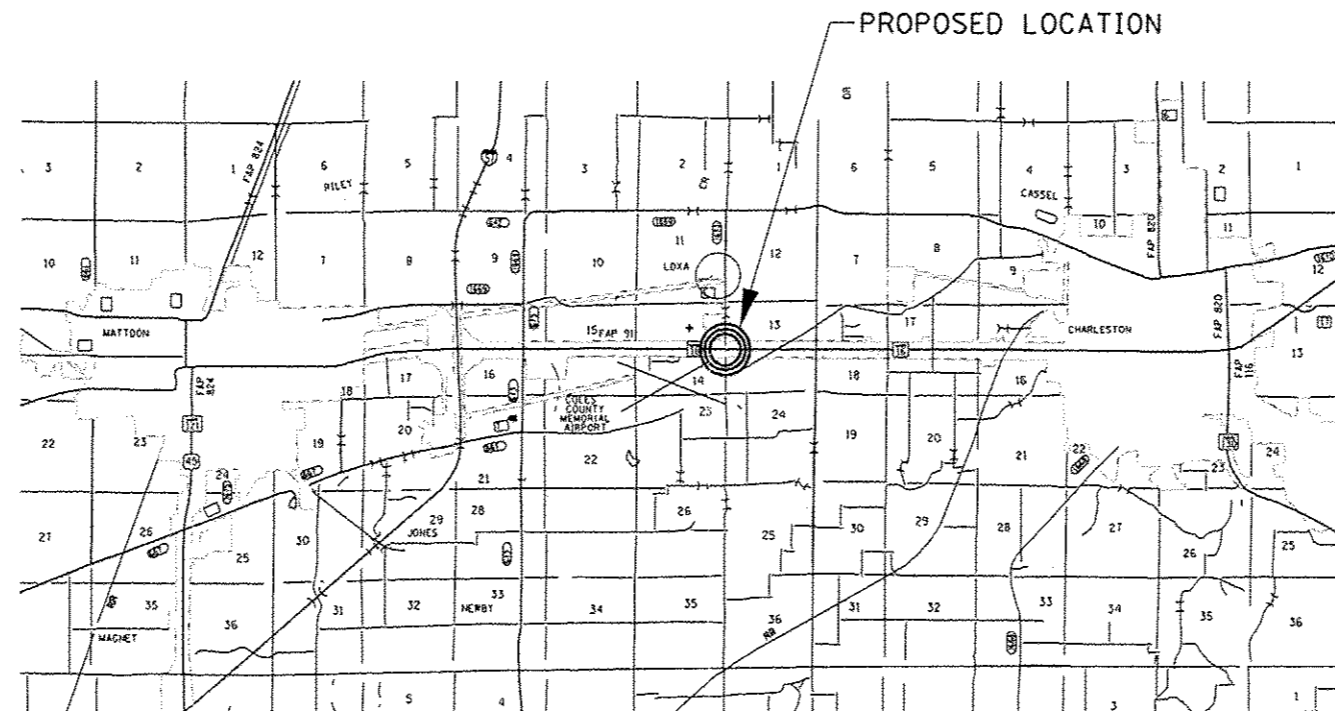
FOR INDEX OF SHEETS, SEE SHEET NO. 2

F.A.P. RTE.	SECTION	COUNTY	TOTAL SHEETS	SHEET NO.
91	50-ITS,L	COLES	13	1
		ILLINOIS	CONTRACT NO. 74713	

D-97-018-15



LOCATION OF SECTION INDICATED THUS: - [black rectangle] -



FULL SIZE PLANS HAVE BEEN PREPARED USING STANDARD ENGINEERING SCALES. REDUCED SIZED PLANS WILL NOT CONFORM TO STANDARD SCALES. IN MAKING MEASUREMENTS ON REDUCED PLANS, THE ABOVE SCALES MAY BE USED.

J.U.L.I.E.  
JOINT UTILITY LOCATION INFORMATION FOR EXCAVATION  
1-800-892-0123  
OR 811

PROJECT ENGINEER ROB MACKLIN  
PROJECT MANAGER LYNN McCLELLAN

CONTRACT NO. 74713

GROSS LENGTH = x.xx FT. = x.xxx MILE  
NET LENGTH = x.xx FT. = x.xxx MILE

STATE OF ILLINOIS  
DEPARTMENT OF TRANSPORTATION  
DIVISION OF HIGHWAYS

SUBMITTED August 14 2015  
Roger L. Danelli  
DEPUTY DIRECTOR OF HIGHWAYS, REGION ENGINEER

Oct 2 2015  
John D. Baranzelli P.E.  
ENGINEER OF DESIGN AND ENVIRONMENT

Oct 2 2015  
Omer Osman P.E.  
DIRECTOR OF HIGHWAYS, CHIEF ENGINEER

**PRINTED BY THE AUTHORITY  
OF THE STATE OF ILLINOIS**

TRAFFIC SIGNAL GENERAL NOTES

THIS PROJECT CONSISTS OF TRAFFIC SIGNAL MODERNIZATION AT THE INTERSECTION OF FAP 91 (IL 16) AND LOXA ROAD IN COLES COUNTY. THE WORK INCLUDED CONSISTS OF INSTALLING TRAFFIC SIGNALS AND ALL OTHER WORK NECESSARY TO COMPLETE THIS PROJECT.

THE EXISTING UTILITY LINES ARE SHOWN ON THE PLANS TO INDICATE THEIR PRESENCE AND APPROXIMATE LOCATION. THE CONTRACTOR SHALL VERIFY THE EXACT LOCATION OF ALL UNDERGROUND UTILITIES PRIOR TO BEGINNING CONSTRUCTION. CALL J.U.L.I.E. AT 811. THE TRAFFIC SIGNAL UTILITY LINES WILL BE LOCATED BY THE CONTRACTOR.

THE TRAFFIC SIGNAL ENGINEER AT THE ILLINOIS DEPARTMENT OF TRANSPORTATION SHALL BE NOTIFIED AT 217-342-8291 AT LEAST 72 HOURS PRIOR TO TURNING ON ANY FLASHER OR CONTROLLER UNIT.

THE SIZE OF THE CABLE SUPPLIED SHALL BE EQUAL TO OR GREATER THAN THE SIZE OF THE CABLE REQUIRED TO CARRY THE LOAD BETWEEN THE CONTROLLER AND THE SERVICE INSTALLATION.

THE CONTRACTOR SHALL ARRANGE FOR A FACTORY OR SUPPLIER REPRESENTATIVE TO BE PRESENT AT THE INTERSECTION WHEN THE SIGNALS ARE TURNED ON. THE REPRESENTATIVE SHALL MAKE CERTAIN THAT ALL EQUIPMENT OPERATES TO THE SATISFACTION OF THE ENGINEER.

A 2 FOOT MINIMUM, 6 FOOT DESIRABLE. HORIZONTAL CLEARANCE SHALL BE MAINTAINED FROM THE BACK OF CURB TO THE EDGE OF HANDHOLES, JUNCTION BOXES AND SIGNAL POST FOUNDATIONS. A 5 FOOT MINIMUM HORIZONTAL CLEARANCE SHALL BE MAINTAINED FROM THE BACK OF THE CURB TO ALL MAST ARM FOUNDATIONS. CONTROLLER FOUNDATIONS SHALL BE LOCATED AS FAR FROM THE BACK OF THE CURB AS POSSIBLE TO PROTECT THE CONTROLLER CABINET.

ALL HARDWARE SHALL BE TIGHTENED AND WELL SECURED. CABLES SHALL BE NEATLY WOUND IN HANDHOLES. CABLES SHALL BE NEATLY TRAINED IN THE CONTROLLER CABINET.

ALL THREADS OF BOLTS USED IN ASSEMBLY OF TRAFFIC SIGNAL COMPONENTS SHALL BE COATED WITH A NON-LEAD BASED ANTI-SEIZE COMPOUND, SIMILAR TO LEAD PLATE, PRIOR TO ASSEMBLY.

NO ADDITIONAL COMPENSATION WILL BE ALLOWED FOR PLACING CONDUIT AT GREATER THAN 2 FOOT MINIMUM DEPTH TO AVOID OBSTACLES SUCH AS UNDERGROUND UTILITIES.

THE CONTRACTOR IS RESPONSIBLE FOR UNCOVERING OR HAND DIGGING AROUND UTILITIES AS NECESSARY. THE COST OF THIS WORK IS TO BE INCLUDED WITH THE TRENCH AND BACKFILL FOR ELECTRICAL WORK PAY ITEM.

THE NUMBER OF CONDUCTORS FOR ELECTRIC CABLES AS SHOWN ON THE PLANS SHALL BE THE MINIMUM NUMBER OF CONDUCTORS FURNISHED FOR EACH LOCATION. THE CONTRACTOR MAY SUBSTITUTE AN ELECTRIC CABLE WITH MORE CONDUCTORS THAN SPECIFIED BUT NO ADDITIONAL COMPENSATION WILL BE MADE FOR THE EXTRA CONDUCTORS.

ALL NEW TRAFFIC SIGNAL WIRING SHALL EXTEND FROM CONTROLLER TO SIGNAL. SPLICES IN HANDHOLES WILL NOT BE ALLOWED.

ALL MAST ARM MOUNTED SIGNAL HEADS ON AN INDIVIDUAL MAST ARM SHALL BE MOUNTED SO THAT THE RED INDICATIONS ARE LEVEL WITH EACH OTHER.

ALL MAST ARM MOUNTED SIGNAL HEADS SHALL BE MOUNTED AS TO ALIGN WITH THE CENTER OF THE LANE.

TRAFFIC SIGNAL HEADS SHALL BE PROPERLY COVERED PRIOR TO INTERSECTION TURN-ON OR AS DIRECTED BY THE ENGINEER. THIS COST SHALL BE INCLUDED WITH THE COST OF THE ASSOCIATED SIGNAL HEAD PAY ITEMS.

ALL TRAFFIC SIGNAL MAST ARM ASSEMBLIES (STANDARD, COMBINATION, OR DUAL) MUST BE DESIGNED FOR THE LOADINGS SHOWN ON THE HIGHWAY STANDARDS OR THESE SIGNAL PLANS, WHICHEVER IS GREATER.

INDEX OF SHEETS

SHEET NO	TITLE
1	COVER SHEET
2	GENERAL NOTES, INDEX OF SHEETS, LIST OF STANDARDS
3-4	SUMMARY OF QUANTITIES
5	DETAILS
6	UTILITY LAYOUT
7	TRAFFIC SIGNAL PLANS-SIGNALS
8	TRAFFIC SIGNAL PLANS CABLES
9	PAVEMENT MARKING-LAYOUT & QUANTITIES
10-13	PAVEMENT MARKING & RAISED REFLECTIVE PAVEMENT MARKERS

THE FOLLOWING STANDARDS ARE A PART OF THESE PLANS AND ARE INCLUDED FOLLOWING THE LAST NUMBERED SHEET OF THE PLANS.

000001-06	STANDARD SYMBOLS, ABBREVIATIONS, AND PATTERNS
001006	DECIMAL OF AN INCH AND OF A FOOT
701006-05	OFF-RD OPERATIONS, 2L, 2W, 15' TO 24" FROM EDGE OF PAVEMENT
701101-04	OFF-RD OPERATIONS, MULTILANE, 15' TO 24" FROM PAVEMENT EDGE
701421-07	LANE CLOSURE, MULTILANE, DAY OPERATIONS ONLY, FOR SPEEDS >= 45 MPH TO 55 MPH
701426-07	LANE CLOSURE, MULTILANE, INTERMITTENT OR MOVING OPER., FOR SPEEDS >= 45 MPH
701901-04	TRAFFIC CONTROL DEVICES
720001-01	SIGN PANEL MOUNTING DETAILS
720006-04	SIGN PANEL ERECTION DETAILS
720016-03	MAST ARM MOUNTED STREET NAME SIGNS
780001-05	TYPICAL PAVEMENT MARKINGS
805001-01	ELECTRICAL SERVICE INSTALLATION DETAILS
814001-03	HANDHOLES
814006-02	DOUBLE HANDHOLES
857001-01	STANDARD PHASE DESIGNATION DIAGRAMS AND PHASE SEQUENCES
873001-02	TRAFFIC SIGNAL GROUNDING & BONDING
877011-05	STEEL COMBINATION MAST ARM ASSEMBLY AND POLE 16' THROUGH 55'
878001-10	CONCRETE FOUNDATION DETAILS
880006-01	TRAFFIC SIGNAL MOUNTING DETAILS
886001-01	DETECTOR LOOP INSTALLATIONS
886006-01	TYPICAL LAYOUTS FOR DETECTION LOOPS

FILE NAME *	USER NAME *	DESIGNED -	REVISED -	<b>STATE OF ILLINOIS DEPARTMENT OF TRANSPORTATION</b>	<b>INDEX OF SHEETS &amp; GENERAL NOTES</b>	F.A.P. RTE.	SECTION	COUNTY	TOTAL SHEETS	SHEET NO.	
pl\1\1084EBIDINTEG-illinois.gov\PI\DOT	stcstaffernk	08/14/2015	08/14/2015			91	50-1TS.L	COLES	13	2	
		CHECKED -	REVISED -			CONTRACT NO. 74713		ILLINOIS FED. AID PROJECT			
Default		DATE -	REVISED -			SCALE:	SHEET OF	SHEETS	STA.	TO STA.	

URBAN

URBAN

SUMMARY OF QUANTITIES			CONSTRUCTION TYPE CODE		
CODE NO	ITEM	UNIT	TOTAL QUANTITIES	0021 90% FED 10% STATE	0021 100% CITY
67100100	MOBILIZATION	LSUM	1	1	
70100310	TRAFFIC CONTROL AND PROTECTION, STANDARD 701421	LSUM	1	1	
* 72000100	SIGN PANEL - TYPE 1	SO FT	55.5	55.5	
* 72000200	SIGN PANEL - TYPE 2	SO FT	24	24	
* 78000100	THERMOPLASTIC PAVEMENT MARKING - LETTERS AND SYMBOLS	SO FT	281	281	
* 78000200	THERMOPLASTIC PAVEMENT MARKING - LINE 4"	FOOT	3739	3739	
* 78000400	THERMOPLASTIC PAVEMENT MARKING - LINE 6"	FOOT	1477	1477	
* 78000600	THERMOPLASTIC PAVEMENT MARKING - LINE 12"	FOOT	29	29	
* 78000650	THERMOPLASTIC PAVEMENT MARKING - LINE 24"	FOOT	183	183	
80500100	SERVICE INSTALLATION, TYPE A	EACH	1	1	
81028340	UNDERGROUND CONDUIT, PVC, 1 1/2" DIA.	FOOT	92	92	
81028350	UNDERGROUND CONDUIT, PVC, 2" DIA.	FOOT	56	56	
81028390	UNDERGROUND CONDUIT, PVC, 4" DIA.	FOOT	420	420	

SUMMARY OF QUANTITIES			CONSTRUCTION TYPE CODE		
CODE NO	ITEM	UNIT	TOTAL QUANTITIES	0021 90% FED 10% STATE	0021 100% CITY
81028400	UNDERGROUND CONDUIT, PVC, 5" DIA.	FOOT	55	55	
81400100	HANDHOLE	EACH	6	6	
81400300	DOUBLE HANDHOLE	EACH	1	1	
81702130	ELECTRIC CABLE IN CONDUIT, 600V (XLP-TYPE USE) 1/C NO. 6	FOOT	3594	3594	
82103250	LUMINAIRE, SODIUM VAPOR, HORIZONTAL MOUNT, PHOTO-CELL CONTROL, 250 WATT	EACH	4	4	
85700200	FULL-ACTUATED CONTROLLER AND TYPE IV CABINET	EACH	1	1	
<del>80200300</del>	UNINTERRUPTABLE POWER SUPPLY, EXTENDED	EACH	1	1	
87301245	ELECTRIC CABLE IN CONDUIT, SIGNAL NO. 14 5C	FOOT	3033	3033	
87301255	ELECTRIC CABLE IN CONDUIT, SIGNAL NO. 14 7C	FOOT	1119	1119	
87301805	ELECTRIC CABLE IN CONDUIT, SERVICE, NO. 6 2 C	FOOT	40	40	
87301900	ELECTRIC CABLE IN CONDUIT, EQUIPMENT GROUNDING CONDUCTOR, NO. 6 1C	FOOT	712	712	
87502680	TRAFFIC SIGNAL POST, ALUMINUM 14 FT.	EACH	4	4	
87502700	TRAFFIC SIGNAL POST, ALUMINUM 16 FT.	EACH	2	2	

\* SPECIALTY ITEM

FILE NAME =	USER NAME = steffanink	DESIGNED -	REVISED -	<b>STATE OF ILLINOIS DEPARTMENT OF TRANSPORTATION</b>	<b>SUMMARY OF QUANTITIES</b>	F.A.P. RTE.	SECTION	COUNTY	TOTAL SHEETS	SHEET NO.
pu:\vlr84EBIDINTEG.illinois.gov\PI\DDT\Do	Documents\DOT_Offices\Distnos 7\Proje\sta\747	CHECKED -	REVISED -			91	50-175L	COLES	13	3
Default	PLOT SCALE = 1/8" = 1'-0"	DATE -	REVISED -			CONTRACT NO. 74713			ILLINOIS FED. AID PROJECT	
	PLOT DATE = 8/14/2015					SCALE:	SHEET 1 OF 2 SHEETS	STA.	TO STA.	

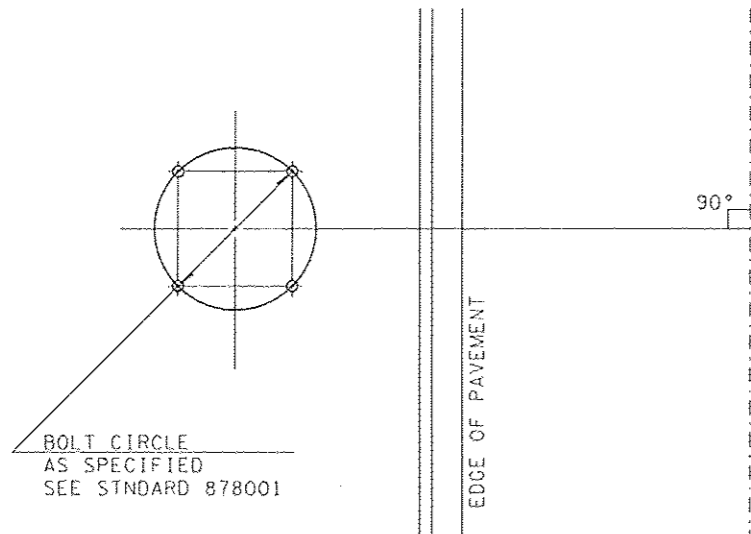
SUMMARY OF QUANTITIES			TOTAL QUANTITIES	CONSTRUCTION TYPE CODE	
CODE NO	ITEM	UNIT		0021	0021 100% CITY
87702920	STEEL COMBINATION MAST ARM ASSEMBLY AND POLE 38 FT.	EACH	1	1	
87702930	STEEL COMBINATION MAST ARM ASSEMBLY AND POLE 40 FT.	EACH	2	2	
87702985	STEEL COMBINATION MAST ARM ASSEMBLY AND POLE 52 FT.	EACH	1	1	
87800100	CONCRETE FOUNDATION, TYPE A	FOOT	18	18	
87800150	CONCRETE FOUNDATION, TYPE C	FOOT	3.5	3.5	
<del>87800200</del>	<del>CONCRETE FOUNDATION, TYPE D</del>	<del>FOOT</del>	<del>3.5</del>	<del>3.5</del>	
87800415	CONCRETE FOUNDATION, TYPE E 36-INCH DIAMETER	FOOT	52	52	
88040070	SIGNAL HEAD, POLYCARBONATE, LED, 1-FACE, 3-SECTION, BRACKET MOUNTED	EACH	3	3	
88040090	SIGNAL HEAD, POLYCARBONATE, LED, 1-FACE, 3-SECTION, MAST ARM MOUNTED	EACH	8	8	
88040160	SIGNAL HEAD, POLYCARBONATE, LED, 1-FACE, 5-SECTION, MAST ARM MOUNTED	EACH	2	2	
88040230	SIGNAL HEAD, POLYCARBONATE, LED, 2-FACE, 3-SECTION, BRACKET MOUNTED	EACH	1	1	

SUMMARY OF QUANTITIES			TOTAL QUANTITIES	CONSTRUCTION TYPE CODE	
CODE NO	ITEM	UNIT		0021	0021 100% CITY
88040260	SIGNAL HEAD, POLYCARBONATE, LED, 2-FACE, 1-3-SECTION, 1-5-SECTION, BRACKET MOUNTED	EACH	2	2	
88200410	TRAFFIC SIGNAL BACKPLATE, LOUVERED, FORMED PLASTIC	EACH	19	19	
88700200	LIGHT DETECTOR	EACH	2		2
88700300	LIGHT DETECTOR AMPLIFIER	EACH	2		2
X7015005	CHANGEABLE MESSAGE SIGN	CAL DA	38	38	
* X7830060	GROOVING FOR RECESSED PAVEMENT MARKING, LETTERS AND SYMBOLS	SQ FT	281	281	
* X7830070	GROOVING FOR RECESSED PAVEMENT MARKING 5"	FOOT	3739	3739	
* X7830074	GROOVING FOR RECESSED PAVEMENT MARKING 7"	FOOT	1477	1477	
* X7830078	GROOVING FOR RECESSED PAVEMENT MARKING 13"	FOOT	29	29	
* X7830090	GROOVING FOR RECESSED PAVEMENT MARKING 25"	FOOT	183	183	
X8730250	ELECTRIC CABLE IN CONDUIT NO. 20 3/C, TWISTED, SHIELDED	FOOT	587		587
X1400106	WIRELESS VEHICLE DETECTION SYSTEM	EACH	1	1	

\* SPECIALTY ITEM

FILE NAME =	USER NAME = staffernk	DESIGNED -	REVISED -	<b>STATE OF ILLINOIS DEPARTMENT OF TRANSPORTATION</b>	<b>SUMMARY OF QUANTITIES</b>	F.A.P. R.I.E.	SECTION	COUNTY	TOTAL SHEETS	SHEET NO.
p:\1128848\BID\INTEG.ILLINOIS.GOV\PI\DOT\DO	uments\DOT Offices\Districts 7\Projects\747	DRAWN	REVISED			91	50-ITS.L	COLES	13	4
	PLOT SCALE = 100.0000' / 1"	CHECKED -	REVISED -			CONTRACT NO. 74713				
Default	PLOT DATE = 8/14/2015	DATE -	REVISED -			ILLINOIS FED. AID PROJECT				

SCALE: SHEET 2 OF 2 SHEETS STA. TO STA.

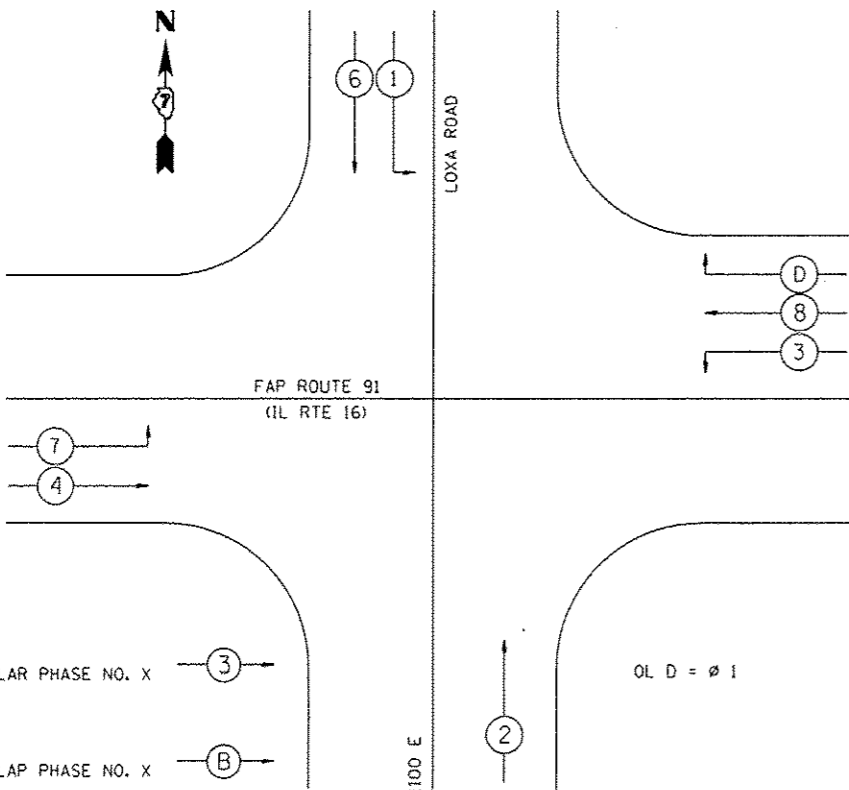


DETAIL OF MAST ARM FOUNDATION  
BOLT PATTERN

**LEGEND**

Proposed

- SIGNAL POST
- MAST ARM
- SIGNAL HEAD W/ BACKPLATE
- CONTROLLER
- HANDHOLE
- GULFBOX JUNCTION
- DOUBLE HANDHOLE
- DETECTOR LOOP
- EMERGENCY VEHICLE PRE-EMPTION
- WIRELESS VEHICLE DETECTION SYSTEM
- 250w HPS LUMINAIRE, 12 FT TRUSS MAST ARM, 40 FT MOUNTING HEIGHT
- TRAFFIC SIGNAL HEAD



PHASE DESIGNATION DIAGRAM

R10-12

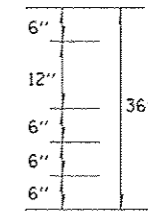
LEFT TURN  
YIELD  
ON GREEN

30"x36"  
(1 TOTAL)

TO BE INSTALLED ON SOUTHBOUND MAST ARM (STA 270+78 74' RT)  
(LOCATED NEAR THE 5 SECTION HEAD)

Loxa  
Road

6.95" 34.1" 6.95"  
15.35" 17.3" 15.35"  
48"



1. SIGN SHALL HAVE A WHITE REFLECTORIZED LEGEND AND BORDER ON A GREEN REFLECTORIZED BACKGROUND.
2. AP SHEETING.
3. UPPER/LOWER CASE LETTERS, HIGHWAY D.
- (2 TOTAL)

TO BE INSTALLED ON WESTBOUND MAST ARM (STA 270+68 65' LT)  
TO BE INSTALLED ON EASTBOUND MAST ARM (STA 271+89 63' RT)

R10-5

LEFT ON  
GREEN  
ARROW  
ONLY

30"x36"  
(4 TOTAL)

TO BE INSTALLED ON WESTBOUND SIGNAL POST IN MEDIAN (STA 270+56 8' LT)  
TO BE INSTALLED ON SIGNAL POST IN SW QUADRANT (FAR LEFT SIGNAL HEAD) (STA 270+68 67' RT)  
TO BE INSTALLED ON EASTBOUND SIGNAL POST IN MEDIAN (STA 271+91 7' RT)  
TO BE INSTALLED ON SIGNAL POST IN NE QUADRANT (FAR LEFT SIGNAL HEAD) (STA 271+91 74' LT)

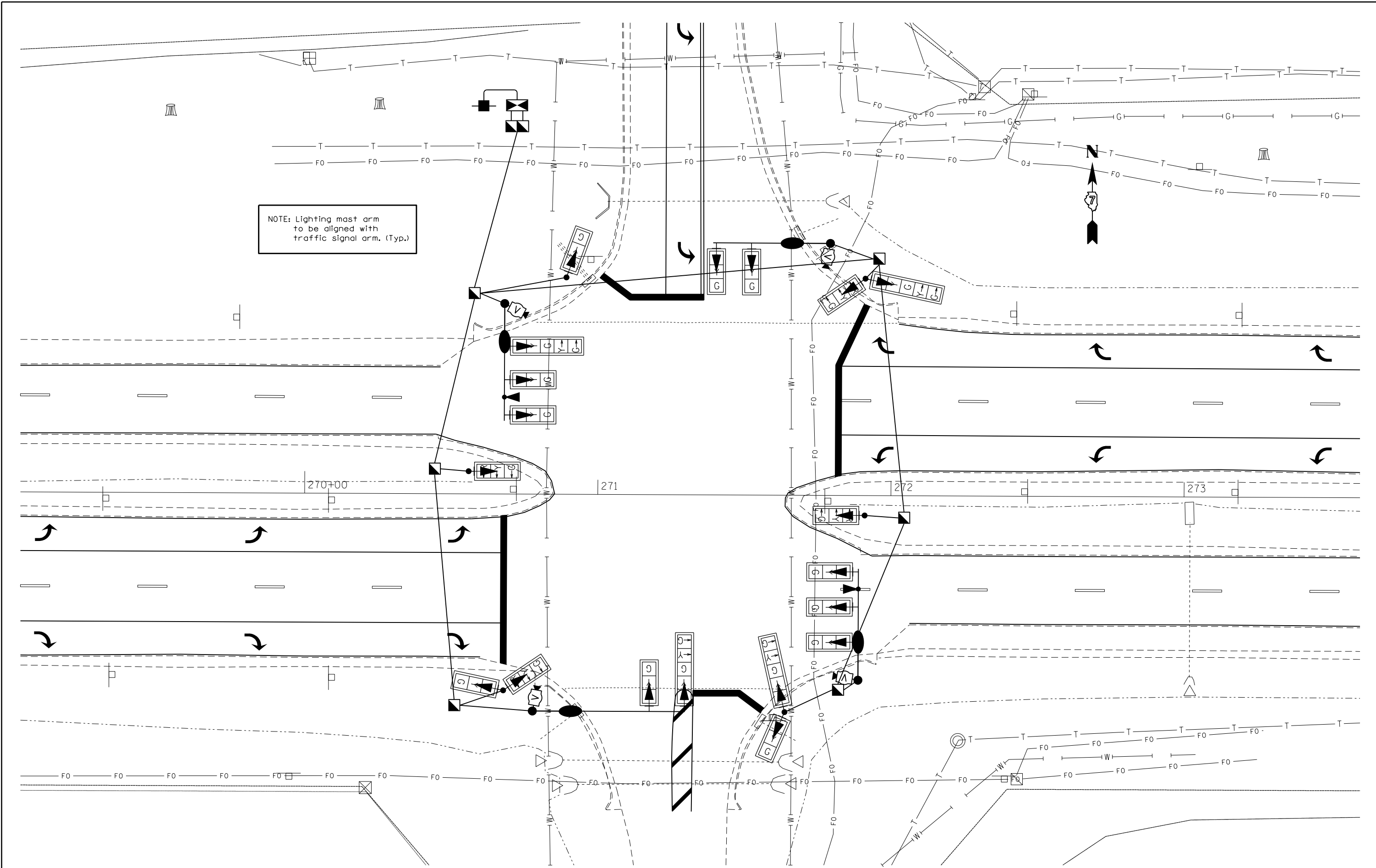
ILLINOIS  
16

36"x36" (2 TOTAL)

TO BE INSTALLED ON NORTHBOUND MAST ARM (STA 271+79 86' LT)  
TO BE INSTALLED ON SOUTHBOUND MAST ARM (STA 270+78 74' RT)

1. SIGN SHALL HAVE A BLACK LEGEND AND BORDER ON A WHITE REFLECTORIZED BACKGROUND.
2. AP SHEETING
2. MI-1100 (36"x36")

SIGN PANEL DETAILS



FILE NAME =	USER NAME = maclellanla	DESIGNED -	REVISED -
p:\11\084EBIDINTEG\illinois.gov\PI\DOT\Documents\IDOT Offices\District 7\Projects\7473\DRAWING\CAB\Sheets\0774713-sht-plan.dgn		DRAWN -	REVISED -
Default	PLOT SCALE = 30.0000' / in.	CHECKED -	REVISED -
	PLOT DATE = 9/28/2015	DATE -	REVISED -

**STATE OF ILLINOIS  
DEPARTMENT OF TRANSPORTATION**

**TRAFFIC SIGNAL PLANS  
INTERSECTION OF LOXA ROAD-UTILITIES LAYOUT**

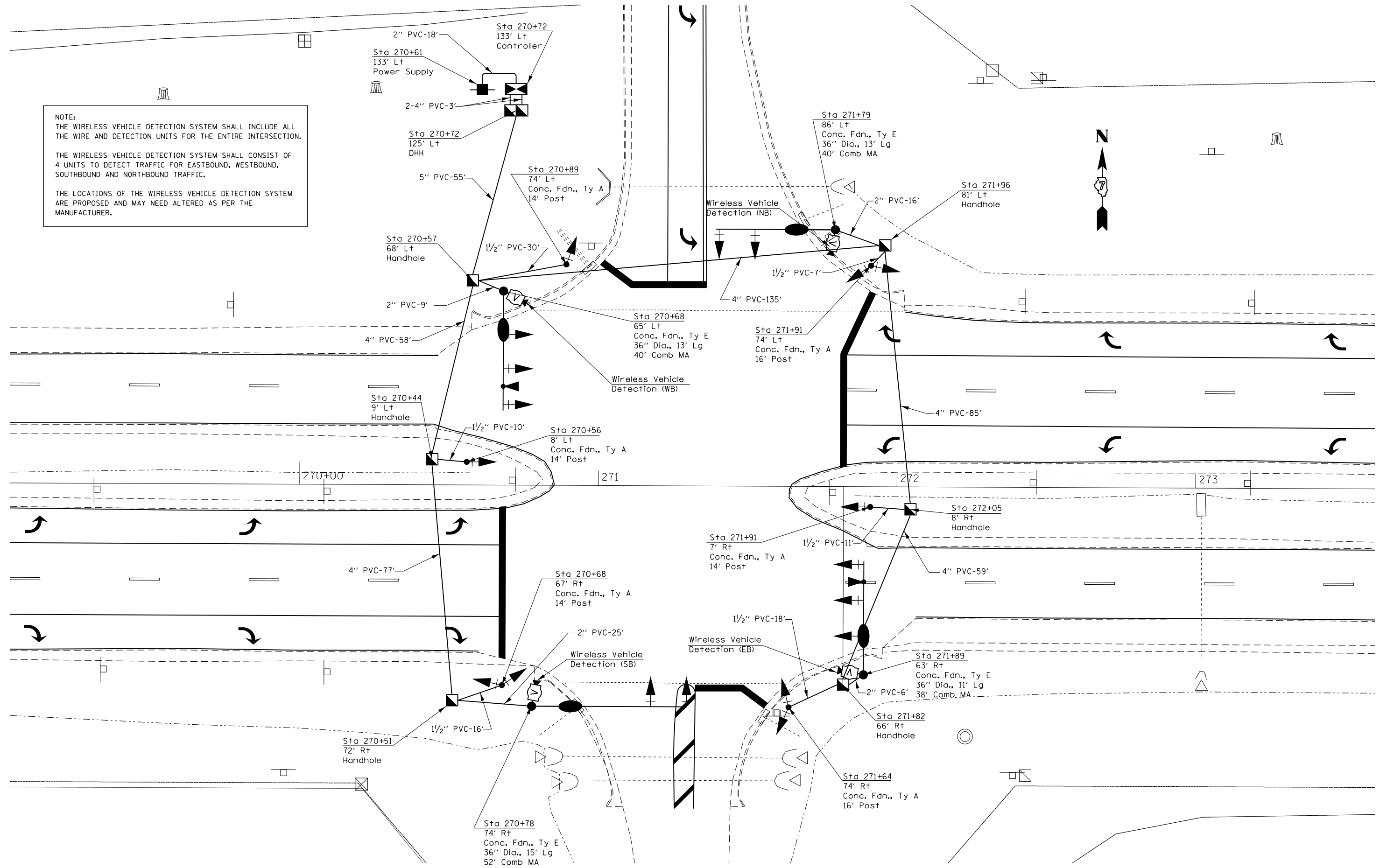
F.A.P. RTE.	SECTION	COUNTY	TOTAL SHEETS	SHEET NO.
91	50-ITS,L	COLES	13	6
CONTRACT NO. 74713				
ILLINOIS FED. AID PROJECT				

SCALE: SHEET OF SHEETS STA. TO STA.

NOTE:  
 THE WIRELESS VEHICLE DETECTION SYSTEM SHALL INCLUDE ALL THE WIRE AND DETECTION UNITS FOR THE ENTIRE INTERSECTION.

THE WIRELESS VEHICLE DETECTION SYSTEM SHALL CONSIST OF 4 UNITS TO DETECT TRAFFIC FOR EASTBOUND, WESTBOUND, SOUTHBOUND AND NORTHBOUND TRAFFIC.

THE LOCATIONS OF THE WIRELESS VEHICLE DETECTION SYSTEM ARE PROPOSED AND MAY NEED ALTERED AS PER THE MANUFACTURER.



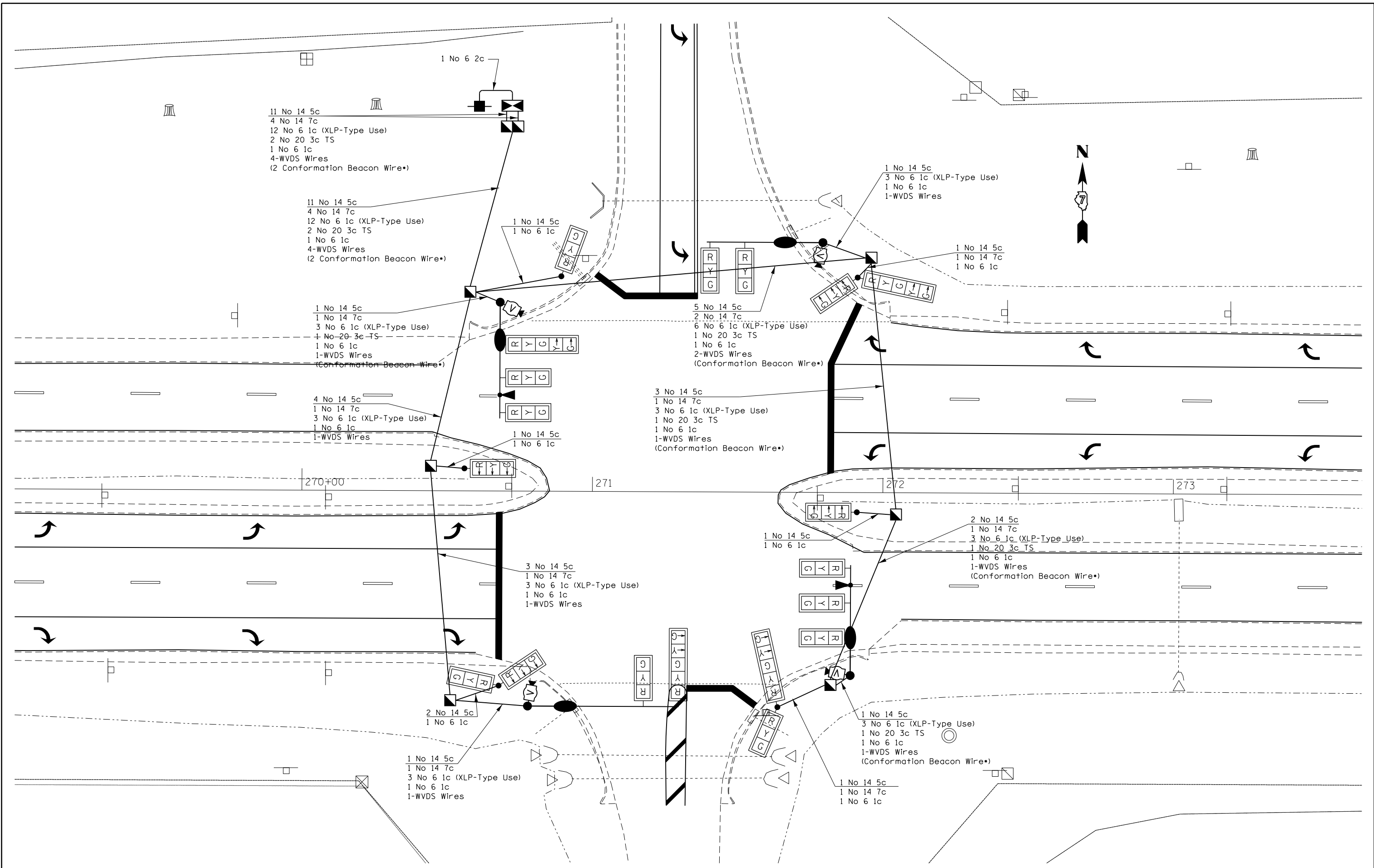
FILE NAME =	USER NAME = maclellonia	DESIGNED -	REVISED -
p:\11\084EBIDINTEG.illinois.gov\PIWIDOT\Documents\IDOT Offices\District 7\Projects\7473\DRAWING\CAB\Sheets\0774713-sht-plan.dgn		30/09/15	REVISED -
Default	PLOT SCALE = 30.0000' / in.	CHECKED -	REVISED -
	PLOT DATE = 9/28/2015	DATE -	REVISED -

**STATE OF ILLINOIS  
 DEPARTMENT OF TRANSPORTATION**

**TRAFFIC SIGNAL PLANS  
 INTERSECTION OF LOXA ROAD-SIGNALS**

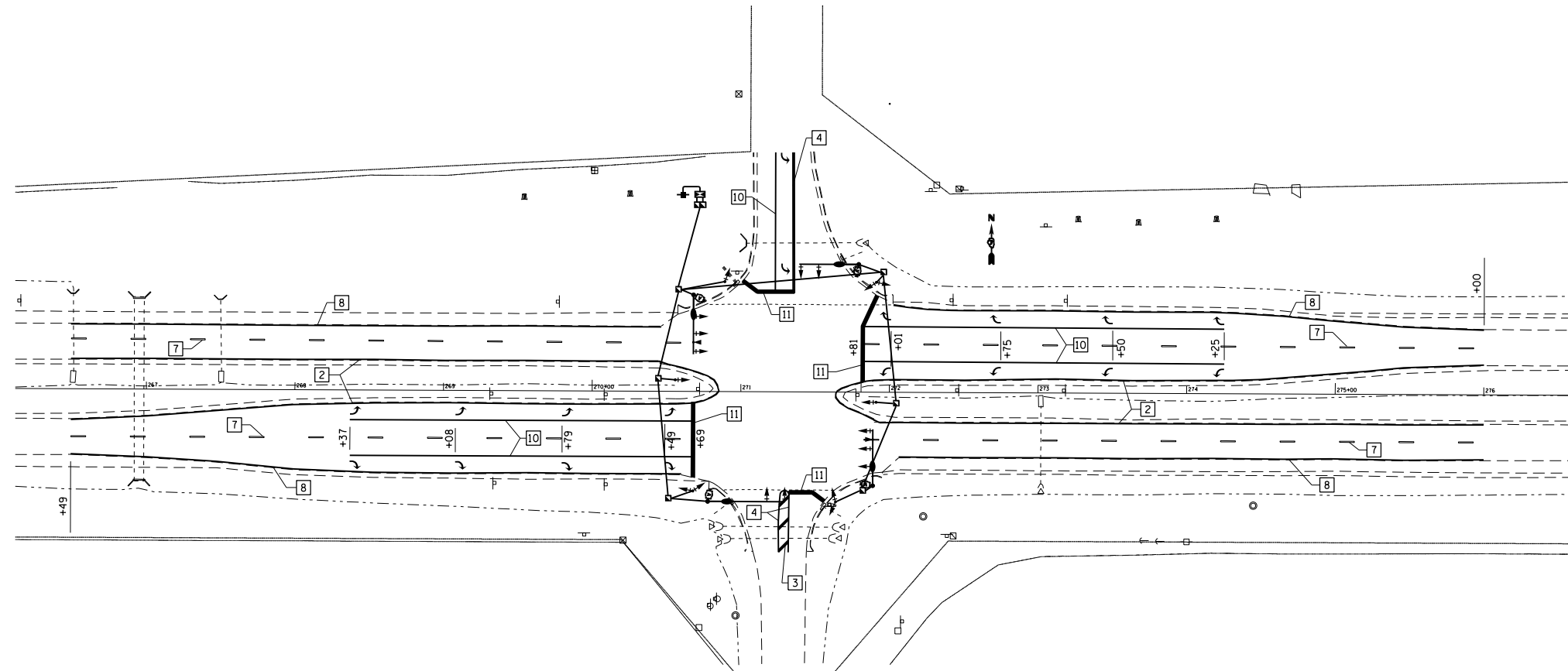
F.A.P. RE.	SECTION	COUNTY	TOTAL SHEETS	SHEET NO.
91	50-ITS,L	COLES	13	7
CONTRACT NO. 74713			ILLINOIS FED. AID PROJECT	

SCALE: SHEET OF SHEETS STA. TO STA.



FILE NAME =	USER NAME = mcllellonla	DESIGNED -	REVISED -	<b>STATE OF ILLINOIS DEPARTMENT OF TRANSPORTATION</b>	<b>TRAFFIC SIGNAL PLANS INTERSECTION OF LOXA ROAD-CABLES</b>				F.A.P. RFE.	SECTION	COUNTY	TOTAL SHEETS	SHEET NO.
p:\11\084EBIDINTEG.illinois.gov\PIWIDOT\Documents\IDOT Offices\District 7\Projects\74730\DRAWING\CABsheets\0774713-shr-plan.dgn		CHECKED -	REVISED -		91	50-ITS,L	COLES	13	8				
Default	PLOT SCALE = 30.0000' / in.	DATE -	REVISED -		CONTRACT NO. 74713								
	PLOT DATE = 9/28/2015				ILLINOIS FED. AID PROJECT								
				SCALE:	SHEET	OF	SHEETS	STA.	TO	STA.			





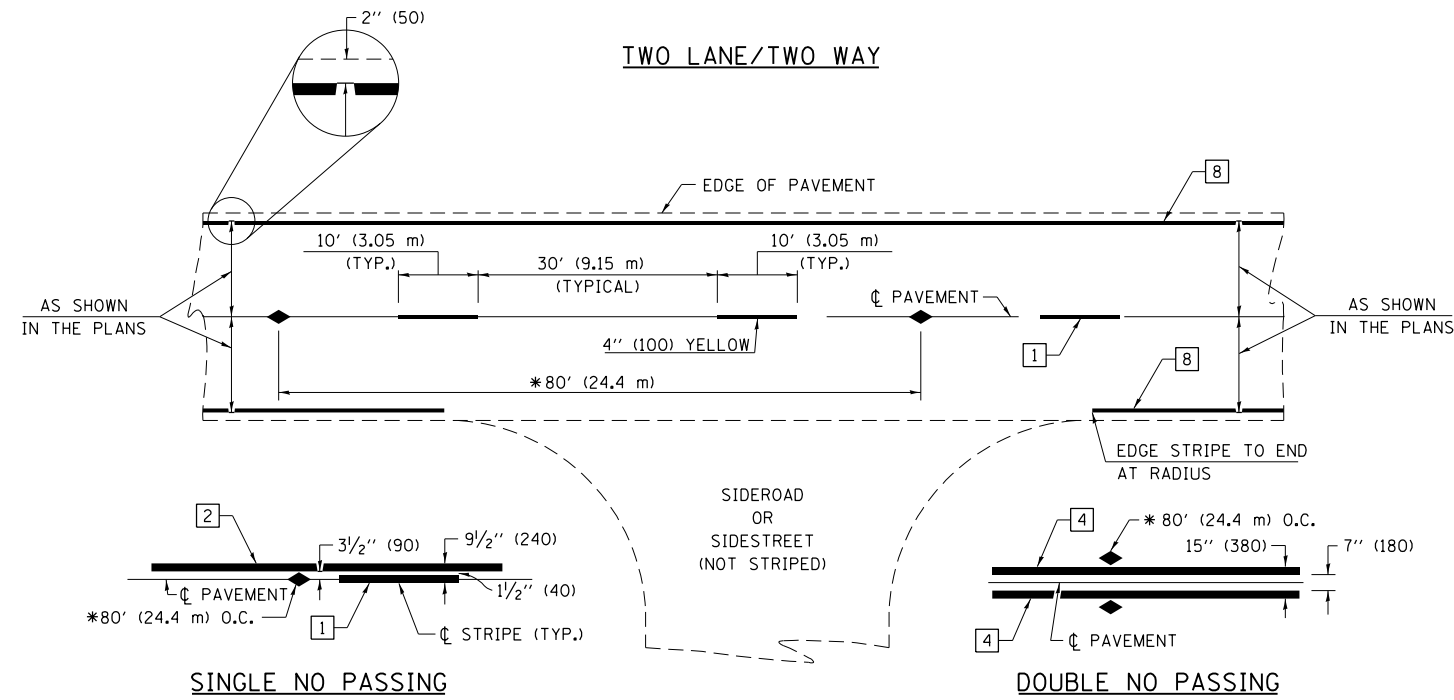
- 2 4" (100) SOLID (YELLOW)
- 3 12" (300) DIAGONAL (YELLOW)
- 4 4" (100) DOUBLE YELLOW (NARROW)
- 7 6" (150) SKIP-DASH (WHITE)
- 8 4" (100) SOLID (WHITE)
- 10 6" (150) SOLID (WHITE)
- 11 24" (600) STOP BAR (WHITE)

2 4" (100) SOLID (YELLOW)	3 12" (300) DIAGONAL (YELLOW)	4 4" (100) DOUBLE YELLOW (NARROW)	7 6" (150) SKIP-DASH (WHITE)	8 4" (100) SOLID (WHITE)	10 6" (150) SOLID (WHITE)	11 24" (600) STOP BAR (WHITE)	SYMBOLS
882'	29'	91'	110'	418'	230'	51'	18 X 15.6 SQ FT
882'		93'	110'	397'	230'	26'	281 SQ FT
1764'		184' X 2	110'	398'	242'	68'	
		368'	110'	394'	242'	38'	
			440'	1607'	93'	183'	
					1037		

SEE PAVEMENT MARKING AND RAISED REFLECTIVE MARKERS SHEETS FOR ALL ADDITIONAL DETAILS

Thermoplastic Pavement Markings shall be applied as follows:		
	White	Yellow
Thermoplastic Pavement Marking - Line 4"	1607 FT	2132 FT
Thermoplastic Pavement Marking - Line 6"	1477 FT	0 FT
Thermoplastic Pavement Marking - Line 12"	0 FT	29 FT
Thermoplastic Pavement Marking - Line 24"	183 FT	0 FT
Thermoplastic Pavement Marking - Letters & Symbols	281 SQ FT	0 SQ FT
	<b>Total</b>	<b>Total</b>
	3739 FT	29 FT
	1477 FT	183 FT
	281 SQ FT	281 SQ FT

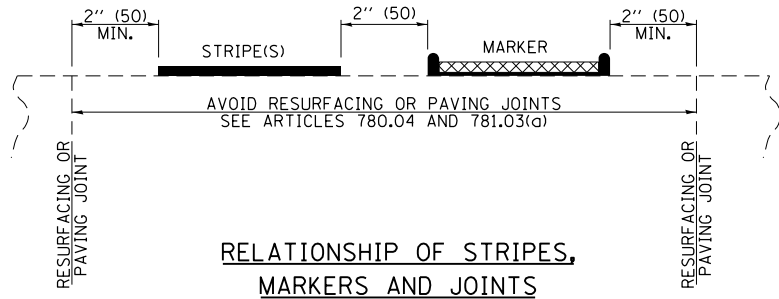
FILE NAME =	USER NAME = mceillon	DESIGNED -	REVISED -	<b>STATE OF ILLINOIS DEPARTMENT OF TRANSPORTATION</b>	<b>PAVEMENT MARKINGS</b>	F.A.P. RTE. 91	SECTION 50-ITS.L	COUNTY COLES	TOTAL SHEETS 13	SHEET NO. 9
pw:\11084EBID\INTEG.illinois.gov\PI\01\Documents\1001\Offices\District 7\Projects\74730\RAW\CA\Sheets\0774713-sht-plan.dgn	Documents\1001\Offices\District 7\Projects\74730\RAW\CA\Sheets\0774713-sht-plan.dgn	CHECKED -	REVISED -							
Default	PLOT SCALE = 100.0000" / 1"	DATE -	REVISED -		SCALE:	SHEET	OF	SHEETS	STA.	TO STA.
	PLOT DATE = 9/28/2015									
										ILLINOIS FED. AID PROJECT <b>CONTRACT NO. 74713</b>



\* REDUCE TO 40' (12.2 m) O.C. ON CURVES WITH POSTED OR ADVISORY SPEEDS OF 45 mph (70 km/h) OR LESS.

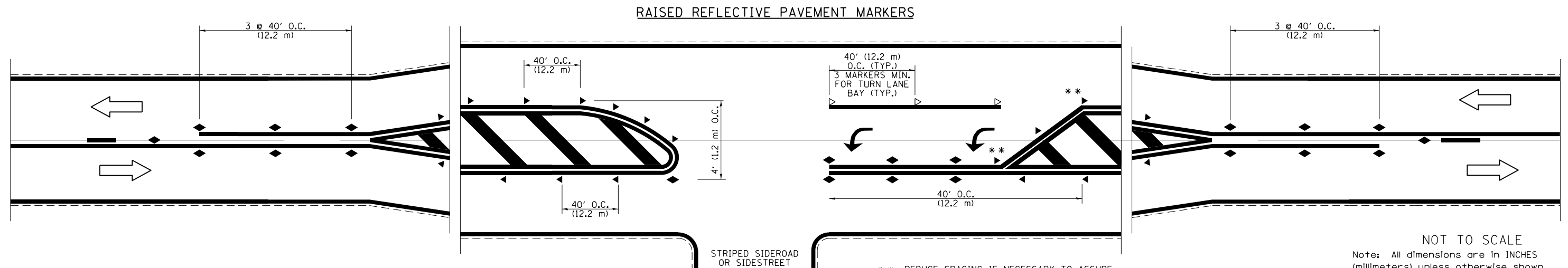
**PAVEMENT MARKING LEGEND**

- 1 4" (100) SKIP-DASH (YELLOW)
  - 2 4" (100) SOLID (YELLOW)
  - 3 12" (300) DIAGONAL (YELLOW)
  - 4 4" (100) DOUBLE YELLOW (NARROW)
  - 5 12" (300) SOLID WHITE
  - 6 RESERVED
  - 7 6" (150) SKIP-DASH (WHITE)
  - 8 4" (100) SOLID (WHITE)
  - 9 12" (300) DIAGONAL (WHITE)
  - 10 6" (150) SOLID (WHITE)
  - 11 24" (600) STOP BAR (WHITE)
  - 12 8" (200) SOLID (WHITE)
  - 13 4" (100) PARKING WHITE
- 



**TYPICAL PAVEMENT MARKERS LEGEND**

- ◆ TWO-WAY AMBER MARKER
- ▶ ONE-WAY AMBER MARKER
- ▷ ONE-WAY CRYSTAL MARKER



\*\* REDUCE SPACING IF NECESSARY TO ASSURE MARKERS AT CORNER POINTS.

NOT TO SCALE  
Note: All dimensions are in INCHES (millimeters) unless otherwise shown.

**DISTRICT 7 DETAIL NO. 78000001**

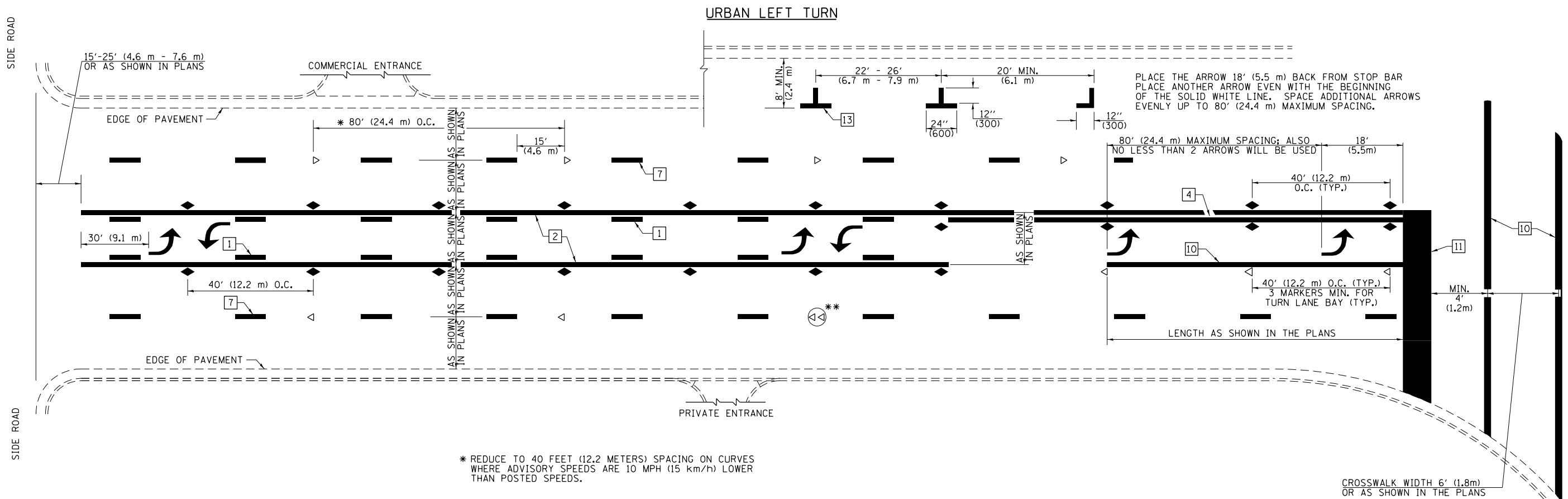
FILE NAME =	USER NAME = steffenmk	DESIGNED -	REVISED -
pw:\IL\084EBIDINTEG\illinois.gov\PWIDOT\Documents\IDOT Offices\District 7\Projects\7473\Drawings\CAD\Sheets\0774713-shr-plan.dgn		CHECKED -	REVISED -
		DATE -	REVISED -

**STATE OF ILLINOIS  
DEPARTMENT OF TRANSPORTATION**

**PAVEMENT MARKING AND RAISED REFLECTIVE PAVEMENT MARKERS  
(RURAL & URBAN APPLICATIONS)**

SCALE: SHEET NO. 1 OF 4 SHEETS STA. TO STA.

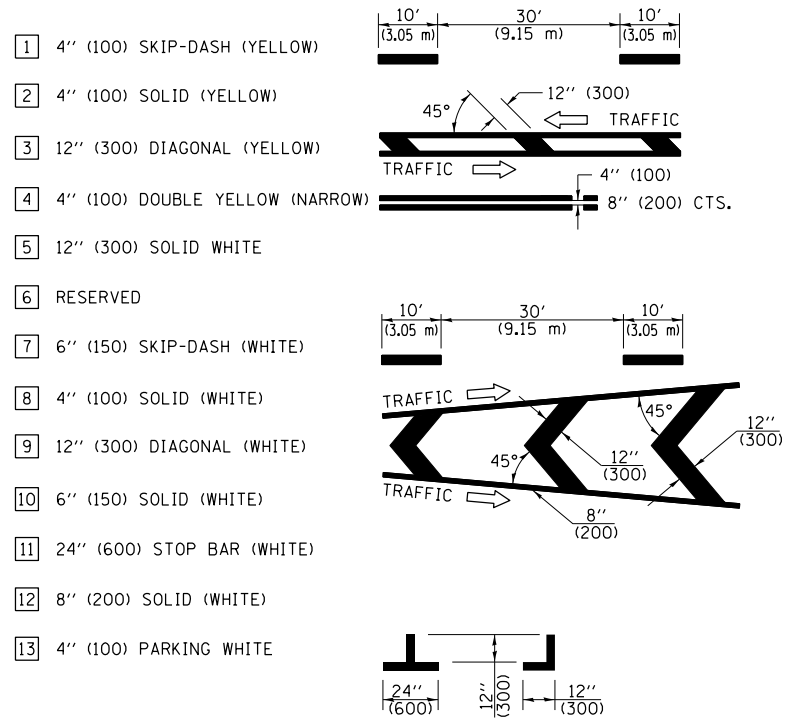
F.A.P. RTE.	SECTION	COUNTY	TOTAL SHEETS	SHEET NO.
91	50-ITS,L	COLES	13	10
				CONTRACT NO. 74713
ILLINOIS FED. AID PROJECT				



\* REDUCE TO 40 FEET (12.2 METERS) SPACING ON CURVES WHERE ADVISORY SPEEDS ARE 10 MPH (15 km/h) LOWER THAN POSTED SPEEDS.

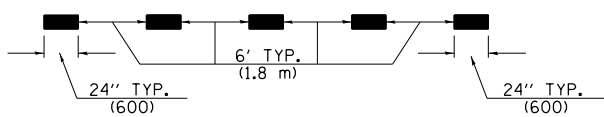
\*\* DOUBLE LANE LINE MARKERS SHALL BE SPECIFIED AND SPACED AS SHOWN IN HIGHWAY STANDARD 781001 FOR MULTI-LANE DIVIDED AND UNDIVIDED HIGHWAYS.

**PAVEMENT MARKING LEGEND**

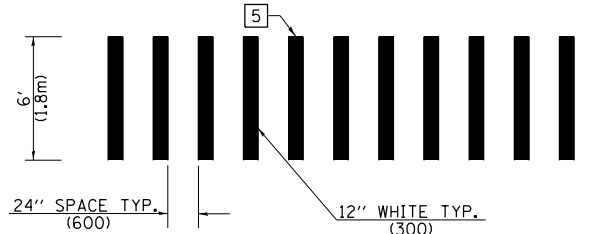


**GENERAL NOTES**

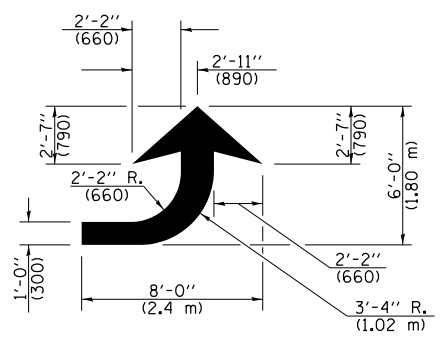
- TURN ARROW PAIRS SHALL BE PLACED AT 250' (75 m) INTERVALS AND SHALL BE EVENLY SPACED BETWEEN BOTH ENDS OF THE BIDIRECTIONAL LEFT TURN LANE. USE A MINIMUM OF TWO PAIRS PER BLOCK.
- THE SOLID YELLOW PAVEMENT MARKINGS [2] SHOULD GENERALLY START OR END NEAR THE RADIUS POINT OF EACH STREET RETURN EXCEPT WHERE ONE OR BOTH ENDS WOULD INCLUDE STOP BARS.
- THE SKIP-DASH PAVEMENT MARKINGS [1] OR [7] SHOULD BE CENTERED BETWEEN BOTH ENDS OF EACH CITY BLOCK AND SHALL BE PLACED SO THEY LINE UP ACROSS FROM EACH OTHER.
- USE LARGE ARROW SIZE FOR BOTH RURAL AND URBAN LOCATIONS. (SEE LAST PAGE OF SECTION 780x FOR SYMBOLS TABLE)
- LANE LINE EXTENSIONS SHALL BE THE SAME COLOR AND WIDTH AS THE LANE LINE BEING EXTENDED.



**LANE LINE EXTENSIONS**

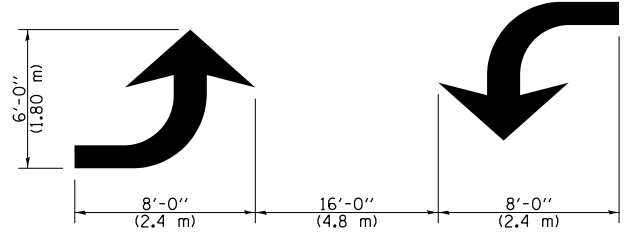


**CROSSWALK DETAIL (DECATUR CITY LIMITS ONLY)**



**LEFT ARROW**

REVERSE FOR RIGHT ARROW  
AREA = 15.6 SQ. FT. (1.47 m<sup>2</sup>)  
(WHITE)



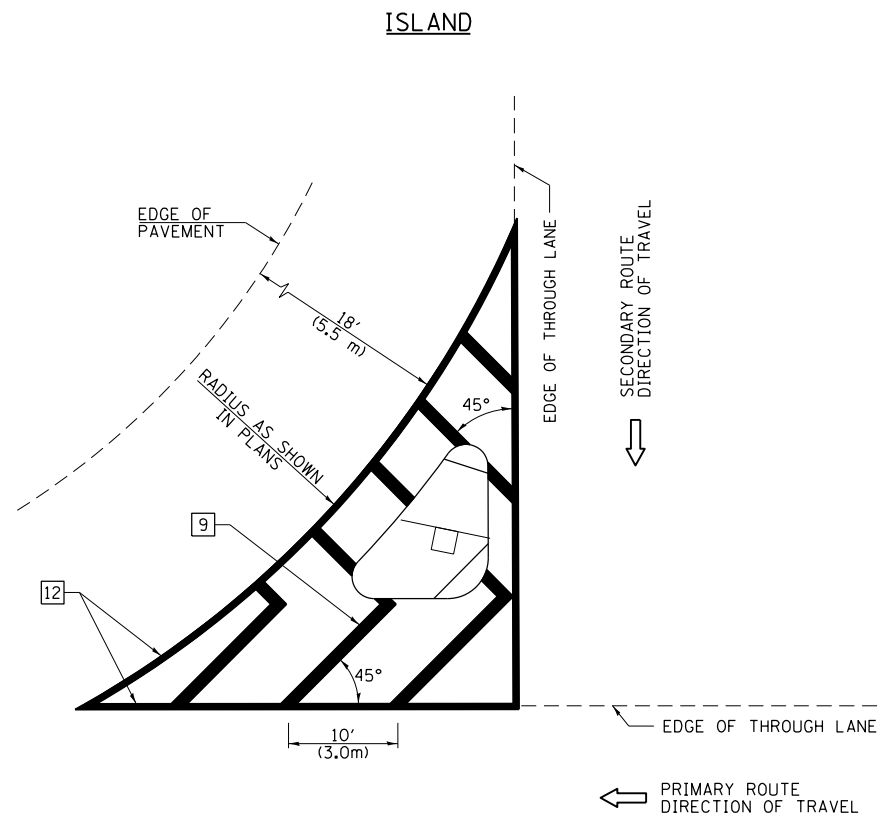
**TYPICAL DOUBLE TURN ARROWS (WHITE)**

NOT TO SCALE

Note: All dimensions are in INCHES (millimeters) unless otherwise shown.

**DISTRICT 7 DETAIL NO. 78000001**

FILE NAME =	USER NAME = steffenmk	DESIGNED -	REVISED -	<b>STATE OF ILLINOIS DEPARTMENT OF TRANSPORTATION</b>	<b>PAVEMENT MARKING AND RAISED REFLECTIVE PAVEMENT MARKERS (RURAL &amp; URBAN APPLICATIONS)</b>			F.A.P. RTE.	SECTION	COUNTY	TOTAL SHEETS	SHEET NO.
pw\11084EBIDINTEG.illinois.gov\PIWIDOT\Documents\DOT Offices\District 7\Projects\7473\Drawings\CADsheets\0774713-sht-plans.dgn		CHECKED -	REVISED -					91	50-ITS,L	COLES	13	11
PLOT SCALE = 20.0000' / in.		DATE -	REVISED -					CONTRACT NO. 74713			ILLINOIS FED. AID PROJECT	
PLOT DATE = 8/14/2015								SCALE:	SHEET NO. 2 OF 4 SHEETS	STA.	TO STA.	

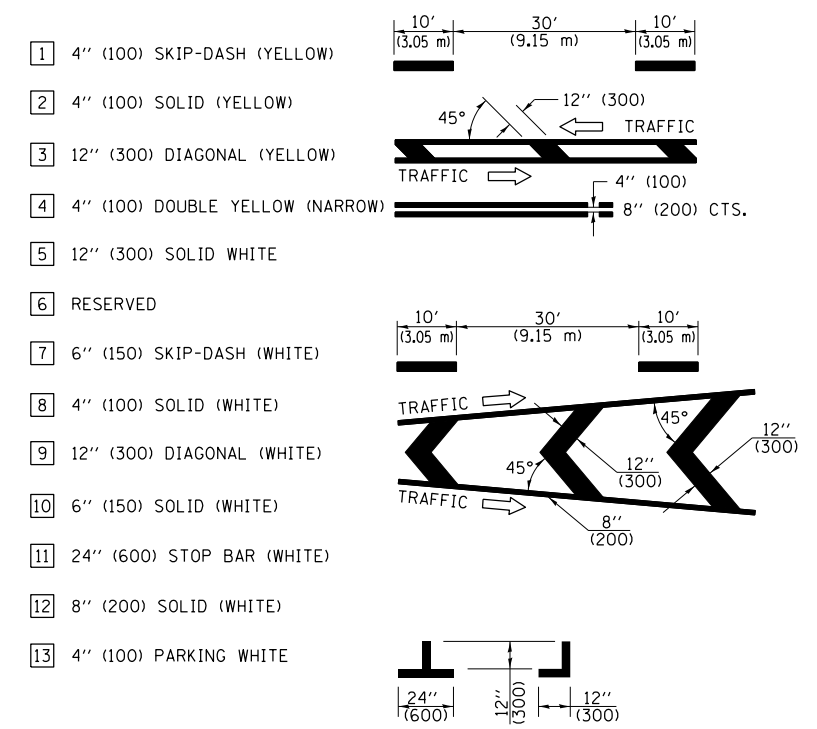


**GENERAL NOTES**

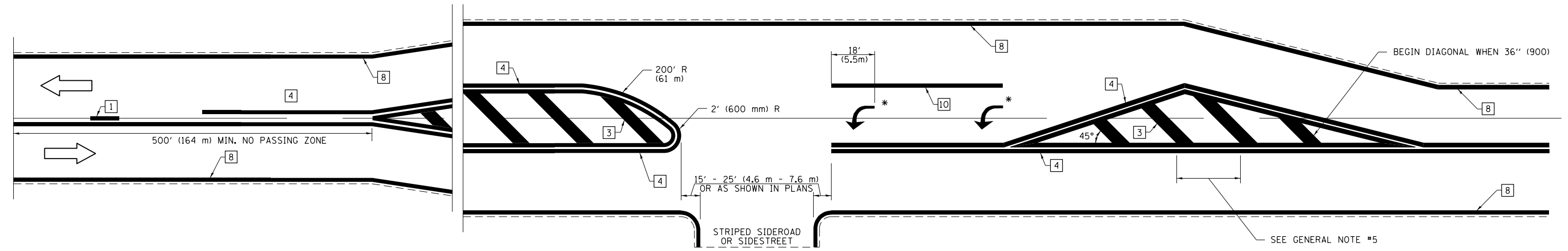
1. RAISED AND CORRUGATED MEDIANS SHALL BE OUTLINED WITH [2] IF PRESENT.
2. SOME OF THE INFORMATION INCLUDED WITH THIS DETAIL MAY NOT BE APPLICABLE TO THIS IMPROVEMENT.
3. PAVEMENT MARKINGS ARE TO BE EXTENDED THROUGH OMISSIONS WHEN APPLICABLE.
4. FINAL PAVEMENT MARKINGS SHALL BE IN PLACE PRIOR TO PLACING ANY RAISED REFLECTIVE PAVEMENT MARKERS.
5. THE FOLLOWING CRITERIA SHALL BE USED FOR SELECTING THE DIAGONAL PAVEMENT MARKING SPACING:
 

< 30 MPH (< 50 km/h)	15' (4.5 m)
30-45 MPH (50-75 km/h)	20' (6.0 m)
> 45 MPH (> 75 km/h)	30' (9.0 m)

**PAVEMENT MARKING LEGEND**



**RURAL LEFT TURN STRIPING**



\* PLACE AN ARROW 18' (5.5 m) BACK FROM STOP BAR. PLACE ANOTHER ARROW EVEN WITH THE BEGINNING OF THE SOLID WHITE LINE. SPACE ADDITIONAL ARROWS EVENLY UP TO 80' (24.4 m) MAXIMUM SPACING. USE MINIMUM OF 2 ARROWS.

NOT TO SCALE  
 Note: All dimensions are in INCHES (millimeters) unless otherwise shown.

**DISTRICT 7 DETAIL NO. 7800001**

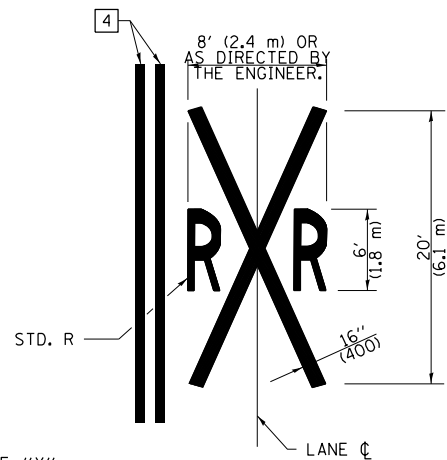
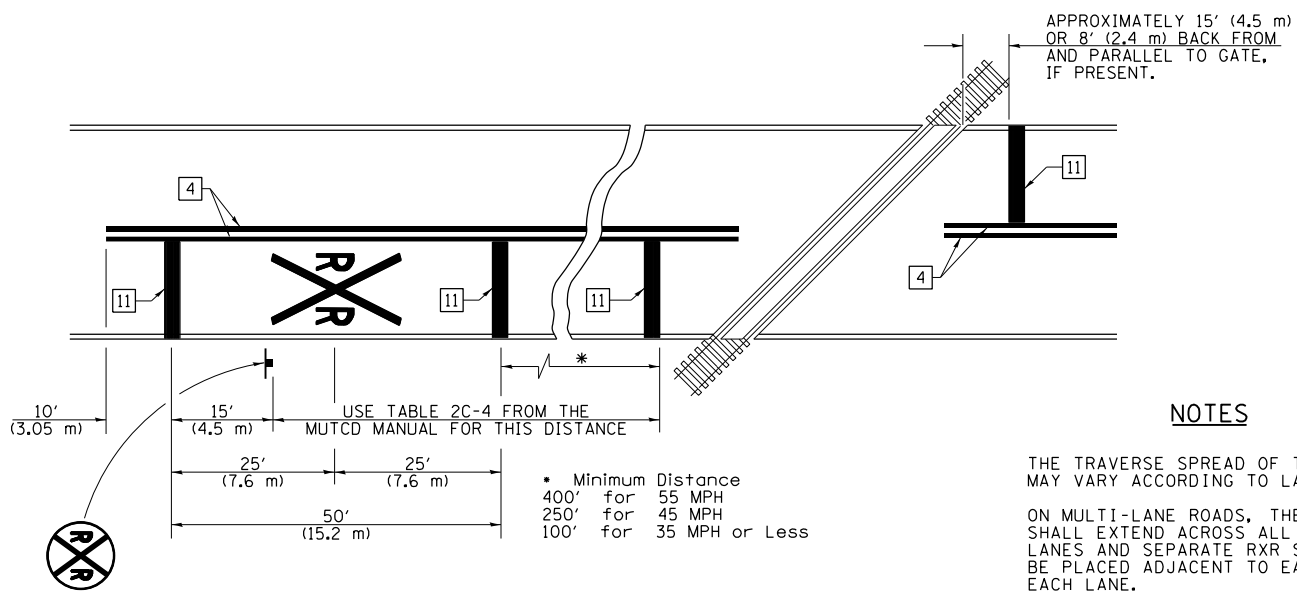
FILE NAME =	USER NAME = steffenmk	DESIGNED -	REVISED -
pw:\IL\084EBIDINTEG\illinois.gov\PWIDOT\Documents\IDOT Offices\District 7\Projects\74730\Drawings\CADsheets\0774713-sht-plan.dgn		REVISION	REVISED -
	PLOT SCALE = 20.0000' / in.	CHECKED -	REVISED -
	PLOT DATE = 8/14/2015	DATE -	REVISED -

**STATE OF ILLINOIS  
 DEPARTMENT OF TRANSPORTATION**

<b>PAVEMENT MARKING AND RAISED REFLECTIVE PAVEMENT MARKERS (RURAL &amp; URBAN APPLICATIONS)</b>			
SCALE:	SHEET NO. 3 OF 4 SHEETS	STA.	TO STA.

F.A.P. RTE.	SECTION	COUNTY	TOTAL SHEETS	SHEET NO.
91	50-ITS,L	COLES	13	12
				CONTRACT NO. 74713
ILLINOIS FED. AID PROJECT				

PAVEMENT MARKINGS AT RAILROAD-HIGHWAY GRADE CROSSING



NOTES

THE TRAVERSE SPREAD OF THE "X" MAY VARY ACCORDING TO LANE WIDTH.

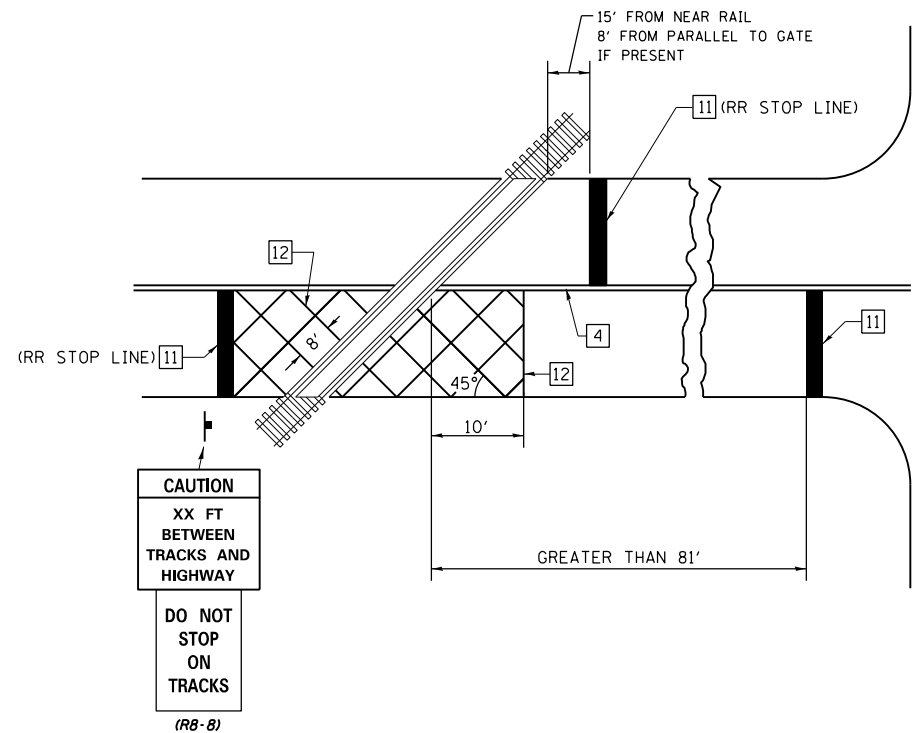
ON MULTI-LANE ROADS, THE STOP LINES SHALL EXTEND ACROSS ALL APPROACH LANES AND SEPARATE RXR SYMBOLS SHALL BE PLACED ADJACENT TO EACH OTHER IN EACH LANE.

WHEN THE PAVEMENT MARKING SYMBOL IS USED, A PORTION OF THE SYMBOL SHOULD BE LOCATED DIRECTLY ADJACENT TO THE ADVANCE WARNING SIGN (W10-1) AS PLACED BY TABLE II-1, CONDITION B OF THE MUTCD.

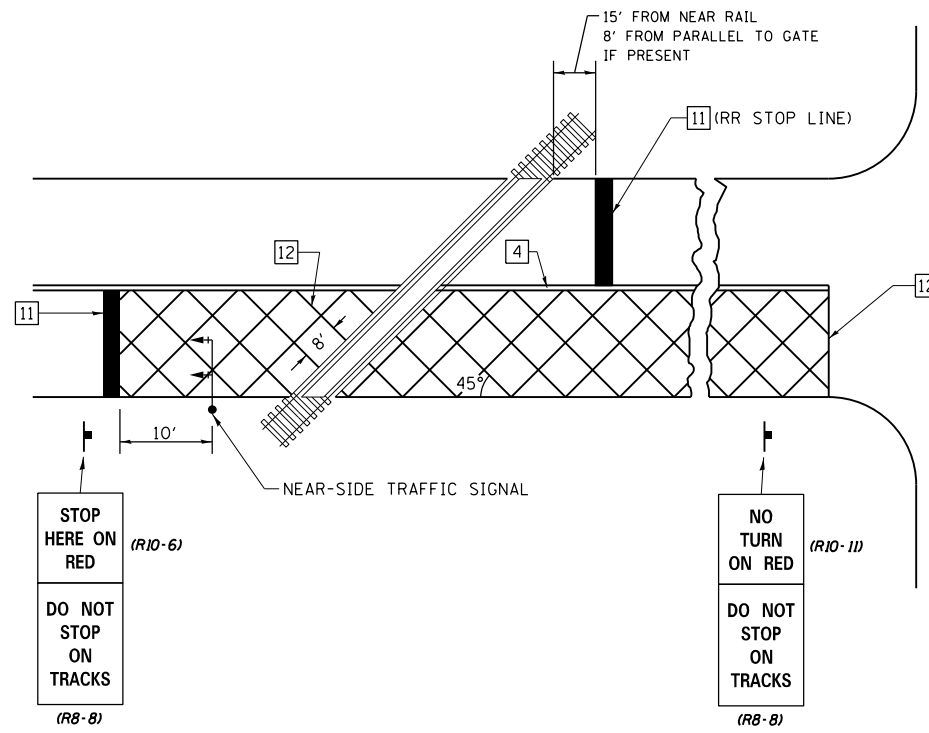
PAVEMENT MARKING LEGEND

- 1 4" (100) SKIP-DASH (YELLOW)
  - 2 4" (100) SOLID (YELLOW)
  - 3 12" (300) DIAGONAL (YELLOW)
  - 4 4" (100) DOUBLE YELLOW (NARROW)
  - 5 12" (300) SOLID WHITE
  - 6 RESERVED
  - 7 6" (150) SKIP-DASH (WHITE)
  - 8 4" (100) SOLID (WHITE)
  - 9 12" (300) DIAGONAL (WHITE)
  - 10 6" (150) SOLID (WHITE)
  - 11 24" (600) STOP BAR (WHITE)
  - 12 8" (200) SOLID (WHITE)
  - 13 4" (100) PARKING WHITE
- 

RAILROAD CROSSING WITH INTERCONNECT ONLY



RAILROAD CROSSING WITH INTERCONNECT AND PRE-SIGNALS



GENERAL NOTES

- SUPPLEMENTAL PAVEMENT MARKINGS TO BE INSTALLED ONLY ON APPROACHES TO INTERSECTIONS CONTROLLED BY TRAFFIC SIGNALS WHICH ARE INTERCONNECTED WITH THE RAILROAD WARNING SIGNALS.
- EXTEND PAVEMENT MARKINGS TO THE INTERSECTION ONLY WHERE NEAR-SIDE TRAFFIC SIGNALS ARE USED.

SUPPLEMENTAL PAVEMENT MARKING TREATMENT FOR RAILROAD-HIGHWAY GRADE CROSSING

NOT TO SCALE

Note: All dimensions are in INCHES (millimeters) unless otherwise shown.

DISTRICT 7 DETAIL NO. 7800001

FILE NAME =	USER NAME = steffenmk	DESIGNED -	REVISED -	<b>STATE OF ILLINOIS DEPARTMENT OF TRANSPORTATION</b>	<b>PAVEMENT MARKING AND RAISED REFLECTIVE PAVEMENT MARKERS (RURAL &amp; URBAN APPLICATIONS)</b>	F.A.P. RTE.	SECTION	COUNTY	TOTAL SHEETS	SHEET NO.
pw:\IL\084EBIDINTEG.illinois.gov\PIWIDOT\Documents\IDOT Offices\District 7\Projects\7473\Drawings\CADsheets\0774713-shr-plan.dgn		CHECKED -	REVISED -			91	50-ITS,L	COLES	13	13
PLOT SCALE = 20.0000' / in.		DATE -	REVISED -			CONTRACT NO. 74713			ILLINOIS FED. AID PROJECT	
PLOT DATE = 8/14/2015						SCALE:	SHEET NO. 4 OF 4 SHEETS	STA.	TO STA.	