

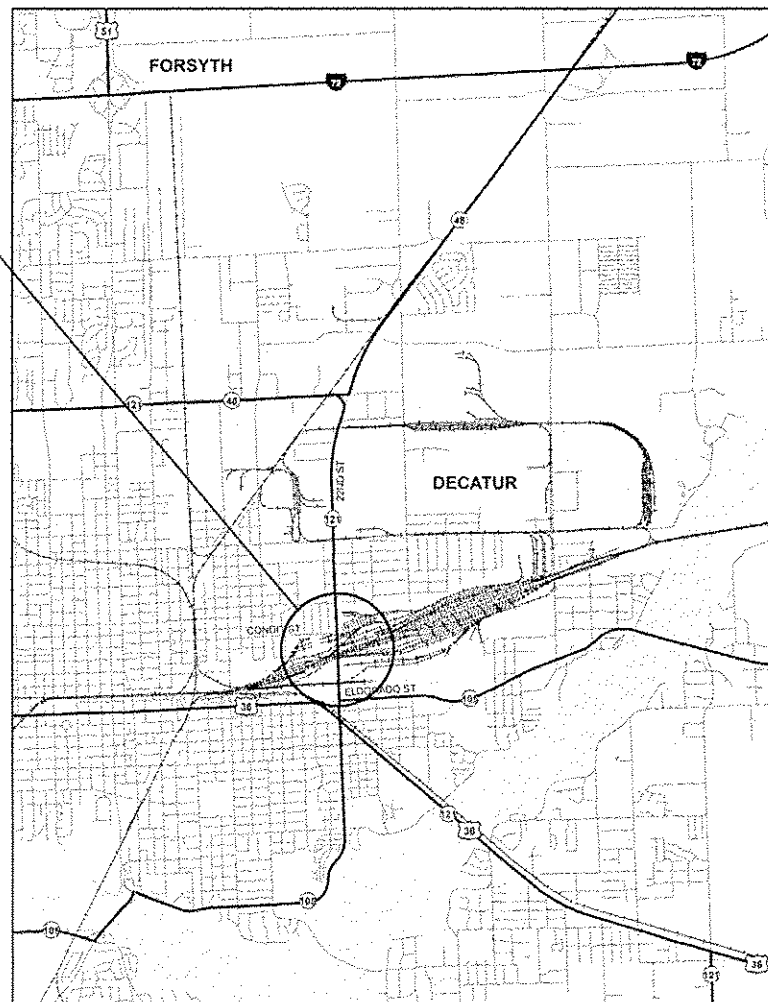
STATE OF ILLINOIS
DEPARTMENT OF TRANSPORTATION
DIVISION OF HIGHWAYS

**PROPOSED
HIGHWAY PLANS**

FAP ROUTE 320 (IL RTE. 121)
SECTION D7 BRIDGE REPAIRS 2016-4

BRIDGE JOINT REPAIR
MACON COUNTY

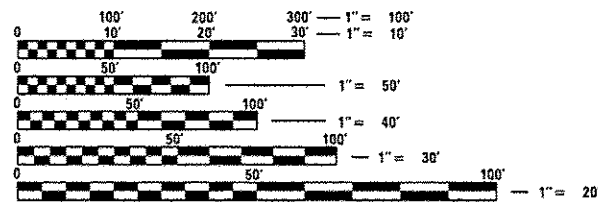
C-97-059-15



GROSS LENGTH = x.xx FT. = x.xxx MILE
NET LENGTH = x.xx FT. = x.xxx MILE

FOR INDEX OF SHEETS, SEE SHEET NO. 2

ADT = 21,200 (2015)



FULL SIZE PLANS HAVE BEEN PREPARED USING STANDARD ENGINEERING SCALES. REDUCED SIZED PLANS WILL NOT CONFORM TO STANDARD SCALES. IN MAKING MEASUREMENTS ON REDUCED PLANS, THE ABOVE SCALES MAY BE USED.

J.U.L.I.E.
JOINT UTILITY LOCATION INFORMATION FOR EXCAVATION
1-800-892-0123
OR 811

PROJECT ENGINEER : TOM RONAN
PROJECT MANAGER : JEFF DAVISON

CONTRACT NO. 74717

F.A.P. RTE.	SECTION	COUNTY	TOTAL SHEETS	SHEET NO.
320		MACON	15	1
		ILLINOIS	CONTRACT NO. 74717	

*D7 BRIDGE REPAIRS 2016-4

D-97-022-15



LOCATION OF SECTION INDICATED THUS: - [black rectangle] -

STATE OF ILLINOIS
DEPARTMENT OF TRANSPORTATION
DIVISION OF HIGHWAYS
SUBMITTED August 26 20 15
Roger L. Driskell / 1000
DEPUTY DIRECTOR OF HIGHWAYS, REGION ENGINEER
Oct 9 20 15
John D. Baranzelli P.E. / 1000
ENGINEER OF DESIGN AND ENVIRONMENT
Oct 2 20 15
Omer Osman P.E. / 1000
DIRECTOR OF HIGHWAYS, CHIEF ENGINEER

PRINTED BY THE AUTHORITY
OF THE STATE OF ILLINOIS

INDEX OF SHEETS

SHEET NO.	ITEM
1	COVER SHEET
2	INDEX OF SHEETS AND GENERAL NOTES
3	SUMMARY OF QUANTITIES
4	PLAN SHEET
5	STAGE I TRAFFIC CONTROL
6	STAGE II TRAFFIC CONTROL
7-14	STRUCTURE REPAIR PLANS
15	DISTRICT DETAILS

THE FOLLOWING STANDARDS ARE A PART OF THESE PLANS AND ARE INCLUDED AFTER SHEET NO. 19:

STD. NO.	DESCRIPTION
000001-06	STANDARD SYMBOLS, ABBREVIATIONS AND PATTERNS
001001-02	AREAS OF REINFORCEMENT BARS
001006	DECIMAL OF AN INCH AND OF A FOOT
420701-02	PAVEMENT FABRIC
701101-04	OFF-ROAD OPERATIONS, MULTI-LANE, 15' TO 24" FROM PAVEMENT EDGE
701601-09	URBAN LANE CLOSURE, 2L, 2W WITH NONTRANSVERSABLE MEDIAN
701901-04	TRAFFIC CONTROL DEVICES

GENERAL NOTES

THIS SECTION SHALL BE CONSTRUCTED IN ACCORDANCE WITH THE PLANS; THE "STANDARD SPECIFICATIONS FOR ROAD AND BRIDGE CONSTRUCTION" ADOPTED JANUARY 1, 2012; AND THE SPECIAL PROVISIONS INCLUDED IN THE PROPOSAL.

THIS PROJECT IS LOCATED ON ILLINOIS ROUTE 121 IN DECATUR IN MACON COUNTY. STRUCTURE NUMBER 058-0120 CROSSES THE N & W RR AND TATE & LYLE'S PROPERTY. THE WORK INCLUDED IN SECTION 07 BRIDGE REPAIRS 2016-4 CONSISTS OF TRAFFIC CONTROL, BRIDGE EXPANSION JOINT REPLACEMENT, PAVEMENT MARKING, AND ANY OTHER WORK NECESSARY TO COMPLETE THE SECTION.

PLAN DIMENSIONS AND DETAILS RELATIVE TO THE EXISTING STRUCTURES HAVE BEEN TAKEN FROM EXISTING PLANS AND ARE SUBJECT TO NOMINAL CONSTRUCTION VARIATIONS. IT SHALL BE THE CONTRACTORS RESPONSIBILITY TO VERIFY DIMENSIONS AND DETAILS IN THE FIELD AND MAKE NECESSARY APPROVED ADJUSTMENTS PRIOR TO CONSTRUCTION OR ORDERING OF MATERIAL. SUCH VARIATIONS SHALL NOT BE CAUSE FOR ADDITIONAL COMPENSATION FOR A CHANGE IN THE SCOPE OF THE WORK. THE CONTRACTOR WILL BE PAID FOR THE QUANTITY FURNISHED AT THE UNIT PRICE BID FOR THE WORK.

THE CONTRACTOR MAY NEED TO DETACH OR REMOVE CHAIN LINK FENCE TO COMPLETE CONCRETE REMOVAL AND TO CONSTRUCT THE NEW EXPANSION JOINTS. NO ADDITIONAL COMPENSATION WILL BE ALLOWED FOR DETACHING, REMOVING, AND REATTACHING ANY CHAIN LINK FENCE TO THE STRUCTURE. THIS WORK WILL BE CONSIDERED INCLUDED IN THE PAY ITEMS INVOLVED. THE CONTRACTOR MAY NEED TO REMOVE AND REINSTALL EXISTING NAME PLATES TO COMPLETE CONCRETE REMOVAL AND TO CONSTRUCT THE NEW EXPANSION JOINTS. NO ADDITIONAL COMPENSATION WILL BE ALLOWED FOR REMOVING AND REINSTALLING ANY NAME PLATES. THIS WORK WILL BE CONSIDERED INCLUDED IN THE PAY ITEMS INVOLVED.

PAVEMENT MARKING SHALL BE APPLIED IN ACCORDANCE WITH SECTION 780 OF THE STANDARD SPECIFICATIONS.

THE TOTAL QUANTITY OF TEMPORARY PAVEMENT MARKING-LINE 4" CONSISTS OF 7,745 FEET OF YELLOW.

THE TOTAL QUANTITY OF TEMPORARY PAVEMENT MARKING-LINE 4" CONSISTS OF 1,296 FEET OF WHITE.

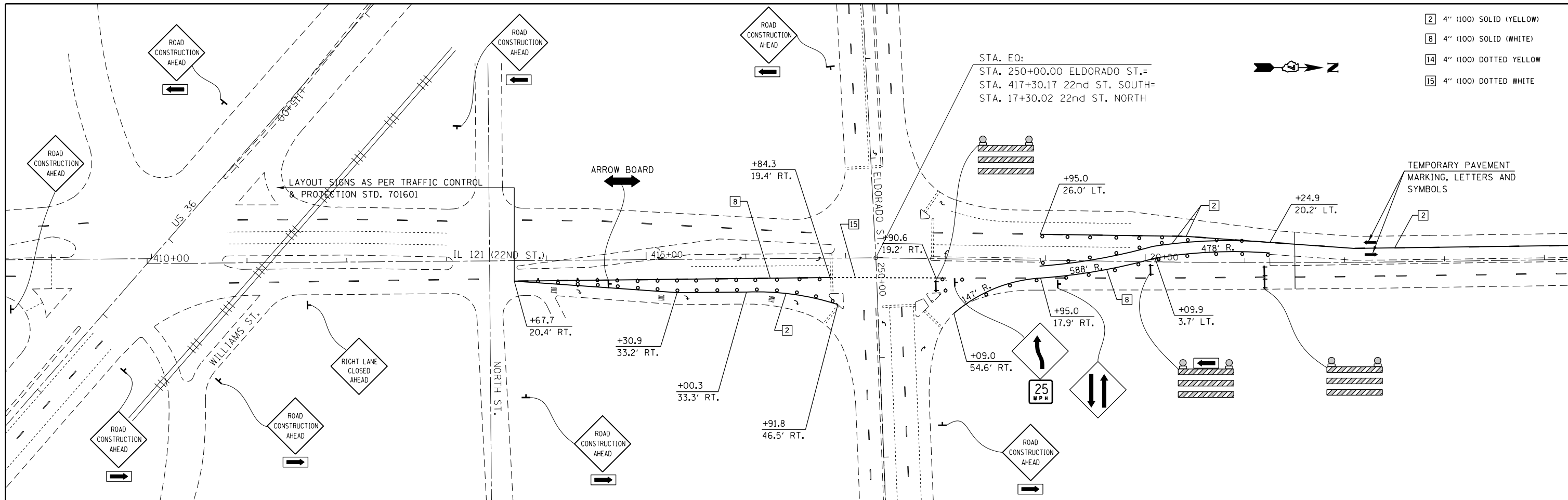
THE FOLLOWING RATES OF APPLICATION HAVE BEEN USED IN CALCULATING PLAN QUANTITIES:

AGGREGATE SUBBASE 2.05 TONS/CU YD

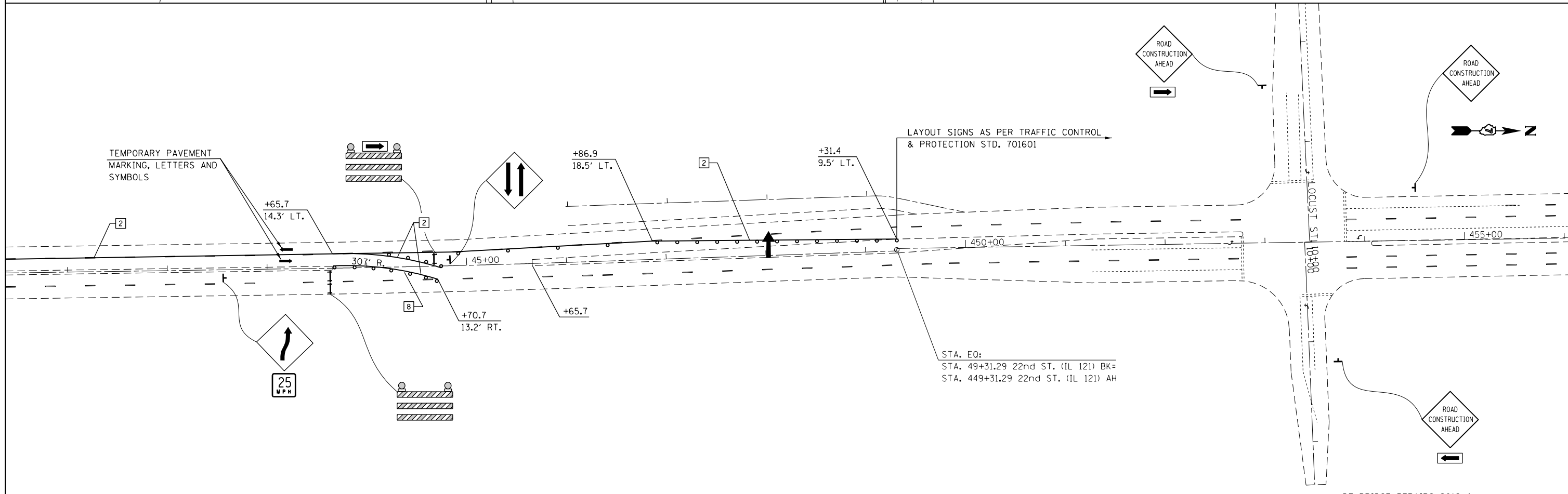
FILE NAME # USER NAME # staffornk DESIGNED - REVISED - p:\11\84EBIDINTEG\illinois.gov\PIDOT\Documents\IDOT Offices\District 7\Pro_mosa\747\00\DWG\CAD\sheet\0774717-shr-index.dwg PLOT SCALE = 100.0000 ' / in. CHECKED - REVISED - PLOT DATE = 8/26/2015 DATE - REVISED -				STATE OF ILLINOIS DEPARTMENT OF TRANSPORTATION		INDEX, STANDARDS & GENERAL NOTES				F.A.P. RTE. SECTION COUNTY TOTAL SHEET NO. 320 - MACON 15 2	
SCALE: NA SHEET 1 OF 1 SHEETS STA. TO STA.						*07 BRIDGE REPAIRS 2016-4 ILLINOIS FED. AID PROJECT CONTRACT NO. 74717					

SUMMARY OF QUANTITIES			URBAN			
CODE NO	ITEM	UNIT	TOTAL QUANTITIES	CONSTRUCTION TYPE CODE		
				100% STATE 0014		
X60065772	CONCRETE MEDIAN, TYPE SB-9.12 (DOWELLED)	SO FT	2266	2266		
31102100	SUBBASE GRANULAR MATERIAL, TYPE C 4"	SO YD	45	45		
35300500	PORTLAND CEMENT CONCRETE BASE COURSE 10"	SO YD	45	45		
44000500	COMBINATION CURB AND GUTTER REMOVAL	FOOT	124	124		
44003510	MEDIAN REMOVAL PARTIAL DEPTH	SO FT	1716	1716		
44213204	TIE BARS 3/4"	EACH	63	63		
50102400	CONCRETE REMOVAL	CU YD	44.4	44.4		
50157300	PROTECTIVE SHIELD	SO YD	170	170		
50300255	CONCRETE SUPERSTRUCTURE	CU YD	39.4	39.4		
50800205	REINFORCEMENT BARS, EPOXY COATED	POUND	6340	6340		
50800515	BAR SPLICERS	EACH	128	128		
50800530	MECHANICAL SPLICERS	EACH	376	376		
52000110	PREFORMED JOINT STRIP SEAL	FOOT	70	70		
67000400	ENGINEER'S FIELD OFFICE, TYPE A	CAL MO	4	4		

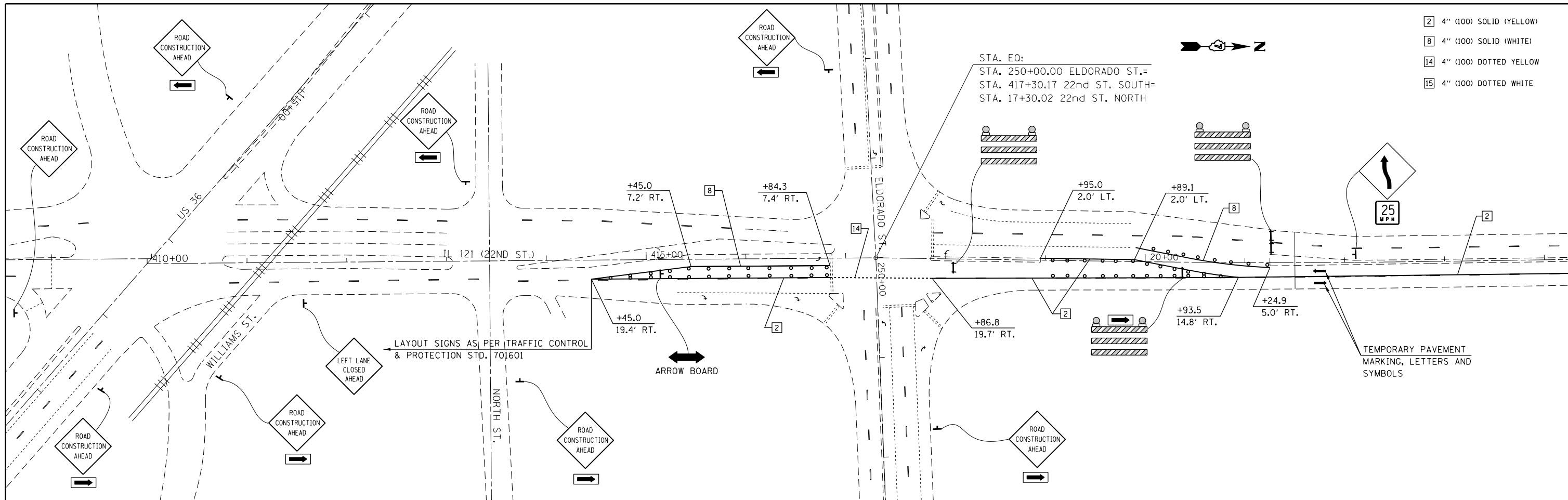
SUMMARY OF QUANTITIES			URBAN			
CODE NO	ITEM	UNIT	TOTAL QUANTITIES	CONSTRUCTION TYPE CODE		
				100% STATE 0014		
67100100	MOBILIZATION	L SUM	1	1		
70102630	TRAFFIC CONTROL AND PROTECTION, STANDARD	LSUM	1	1		
	701601					
70300210	TEMPORARY PAVEMENT MARKING LETTERS AND SYMBOLS	SO FT	100	100		
70300220	TEMPORARY PAVEMENT MARKING - LINE 4"	FOOT	9041	9041		
70301000	WORK ZONE PAVEMENT MARKING REMOVAL	SO FT	3043	3043		
X4403700	MEDIAN REMOVAL (SPECIAL)	SO FT	141	141		
X4403800	MEDIAN SURFACE REMOVAL	SO FT	409	409		
X7010216	TRAFFIC CONTROL AND PROTECTION, (SPECIAL)	LSUM	1	1		
X7015005	CHANGEABLE MESSAGE SIGN	CAL DA	28	28		
Z0034398	MODULAR EXPANSION JOINT 15"	FOOT	128	128		
10						



- 2 4" (100) SOLID (YELLOW)
- 8 4" (100) SOLID (WHITE)
- 14 4" (100) DOTTED YELLOW
- 15 4" (100) DOTTED WHITE

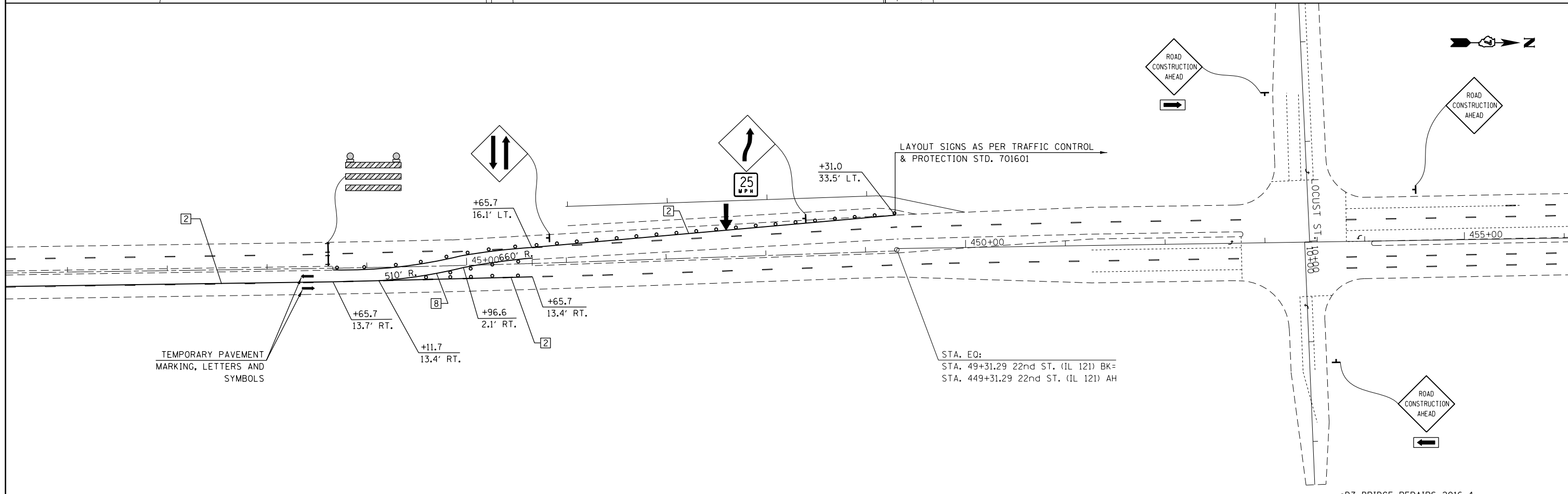


FILE NAME =		USER NAME = steffenmk		DESIGNED -		REVISED -		STATE OF ILLINOIS DEPARTMENT OF TRANSPORTATION		STAGE 1 TRAFFIC CONTROL		*D7 BRIDGE REPAIRS 2016-4 F.A.P. RTE. 320 SECTION . COUNTY MACON TOTAL SHEETS 15 SHEET NO. 5 CONTRACT NO. 74717	
pw:\IL\084EBIDINTEG\illinois.gov\PWIDOT\Documents\IDOT Offices\District 7\Projects\74717\Drawings\CAD\Drawings\74717-sht-1c.dgn		DRAWN -		REVISED -		REVISED -							
PLOT SCALE = 100.0000' / in.		CHECKED -		REVISED -		REVISED -							
PLOT DATE = 8/26/2015		DATE -		REVISED -		REVISED -							
Default								SCALE: 50		SHEET 1 OF 2 SHEETS		STA. TO STA.	



- 2 4" (100) SOLID (YELLOW)
- 8 4" (100) SOLID (WHITE)
- 14 4" (100) DOTTED YELLOW
- 15 4" (100) DOTTED WHITE

STA. EQ:
 STA. 250+00.00 ELDORADO ST.=
 STA. 417+30.17 22nd ST. SOUTH=
 STA. 17+30.02 22nd ST. NORTH



LAYOUT SIGNS AS PER TRAFFIC CONTROL
 & PROTECTION STD. 701601

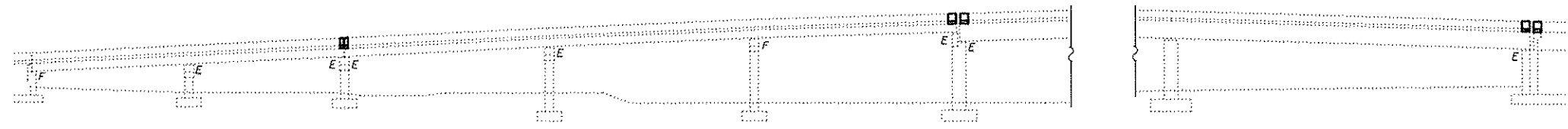
STA. EQ:
 STA. 49+31.29 22nd ST. (IL 121) BK=
 STA. 449+31.29 22nd ST. (IL 121) AH

FILE NAME =		USER NAME = steffenmk		DESIGNED -		REVISED -		STATE OF ILLINOIS DEPARTMENT OF TRANSPORTATION		STAGE 2 TRAFFIC CONTROL		F.A.P. RTE.		SECTION		COUNTY		TOTAL SHEETS		SHEET NO.	
pw:\IL\084EBIDINTEG\illinois.gov\PWIDOT\Documents\IDOT Offices\District 7\Projects\7477\Drawings\CAD\Sheets\0774717-sh1-1c.dgn		DRAWN		CHECKED -		REVISED -						320		8		MACON		15		6	
PLOT SCALE = 100.0000' / in.		DATE		CHECKED -		REVISED -						CONTRACT NO. 74717									
Default		PLOT DATE = 8/26/2015		DATE		REVISED -						SCALE: 50		SHEET 2 OF 2 SHEETS		STA.		TO STA.		ILLINOIS FED. AID PROJECT	

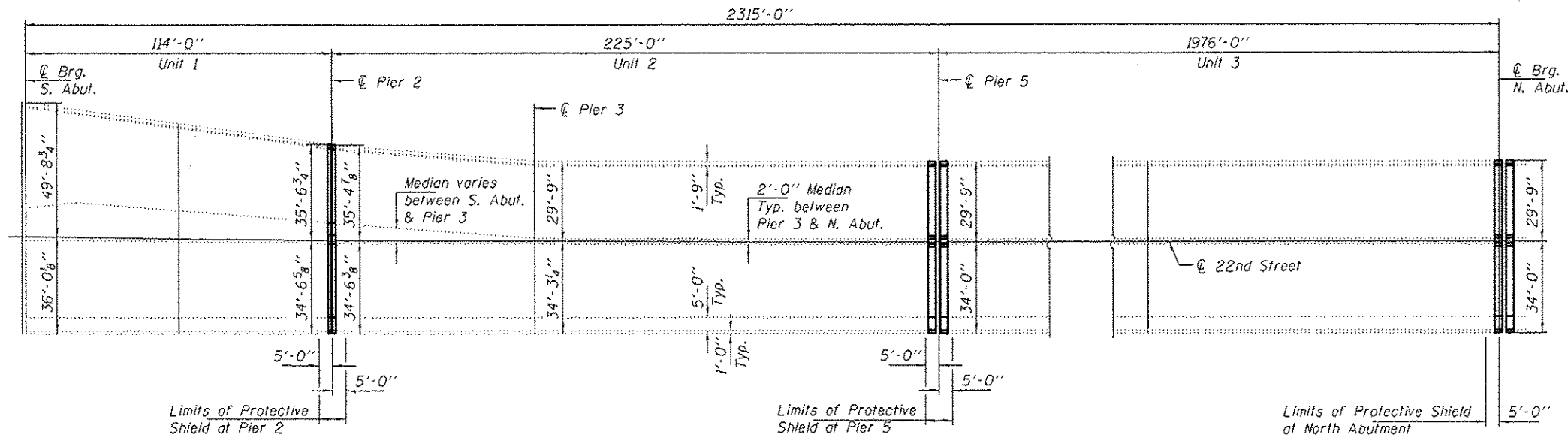
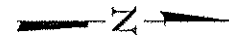
*D7 BRIDGE REPAIRS 2016-4

GENERAL NOTES

All structural steel shall conform to AASHTO Classification M-270 Gr. 36, unless otherwise noted.
 Plan dimensions and details relative to existing plans are subject to nominal construction variations. The Contractor shall field verify existing dimensions and details affecting new construction and make necessary approved adjustments prior to construction or ordering of materials. Such variations shall not be cause for additional compensation for a change in scope of the work, however, the Contractor will be paid for the quantity actually furnished at the unit price bid for the work.
 Expansion joints shall be fabricated and installed according to the manufacturer's recommendations and as approved by the Engineer.
 Expansion joints shall be fabricated to conform to the existing cross slopes of the bridge.
 Existing reinforcement bars extending into the removal area shall be cleaned, straightened and incorporated into the new construction. Any reinforcement bars that are damaged during concrete removal shall be replaced with an approved bar splicer or anchorage system. Cost included with Concrete Removal.
 The deck surface shall have its final finish tined according to Article 420.09(e)(1) of the Standard Specifications. Cost included with Concrete Superstructure.
 Joint openings shall be adjusted according to Article 520.04 of the Standard Specifications when the deck is poured at an ambient temperature other than 50° F.
 Reinforcement bars designated (E) shall be epoxy coated.
 Modular expansion joints shall be assembled in their final relative position with the ends in place for shop inspection and acceptance.



PARTIAL ELEVATION



PARTIAL PLAN

Replace Existing Expansion Joint at Pier 2 with Preformed Joint Strip Seal.
 Replace Existing Expansion Joints at N. Abut. & Pier 5 with Modular Expansion Joints.

Expansion lengths:
 Pier 2 = 264'-0"
 Pier 5 = 1019'-6"
 N. Abut = 1030'-0"

TOTAL BILL OF MATERIAL

ITEM	UNIT	QUANTITY
Concrete Removal	Cu. Yd.	44.4
Concrete Superstructure	Cu. Yd.	39.4
Reinforcement Bars, Epoxy Coated	Pound	6,340
Bar Splicers	Each	128
Preformed Joint Strip Seal	Foot	70
Modular Expansion Joint, 15"	Foot	128
Mechanical Splicers	Each	376
Protective Shield	Sq. Yd.	170

* **DF BRIDGE REPAIRS 2016-4**



EXPIRES 11-30-2016

DESIGNED	<i>Michael H. Veloz</i>	EXAMINED	<i>David Carl Puzey</i>
CHECKED	<i>Adrian T. Holloway</i>	PASSED	<i>David Carl Puzey</i>
DRAWN	<i>bativa</i>	REVISED	
CHECKED	<i>UVV</i> <i>ATM</i>	REVISED	

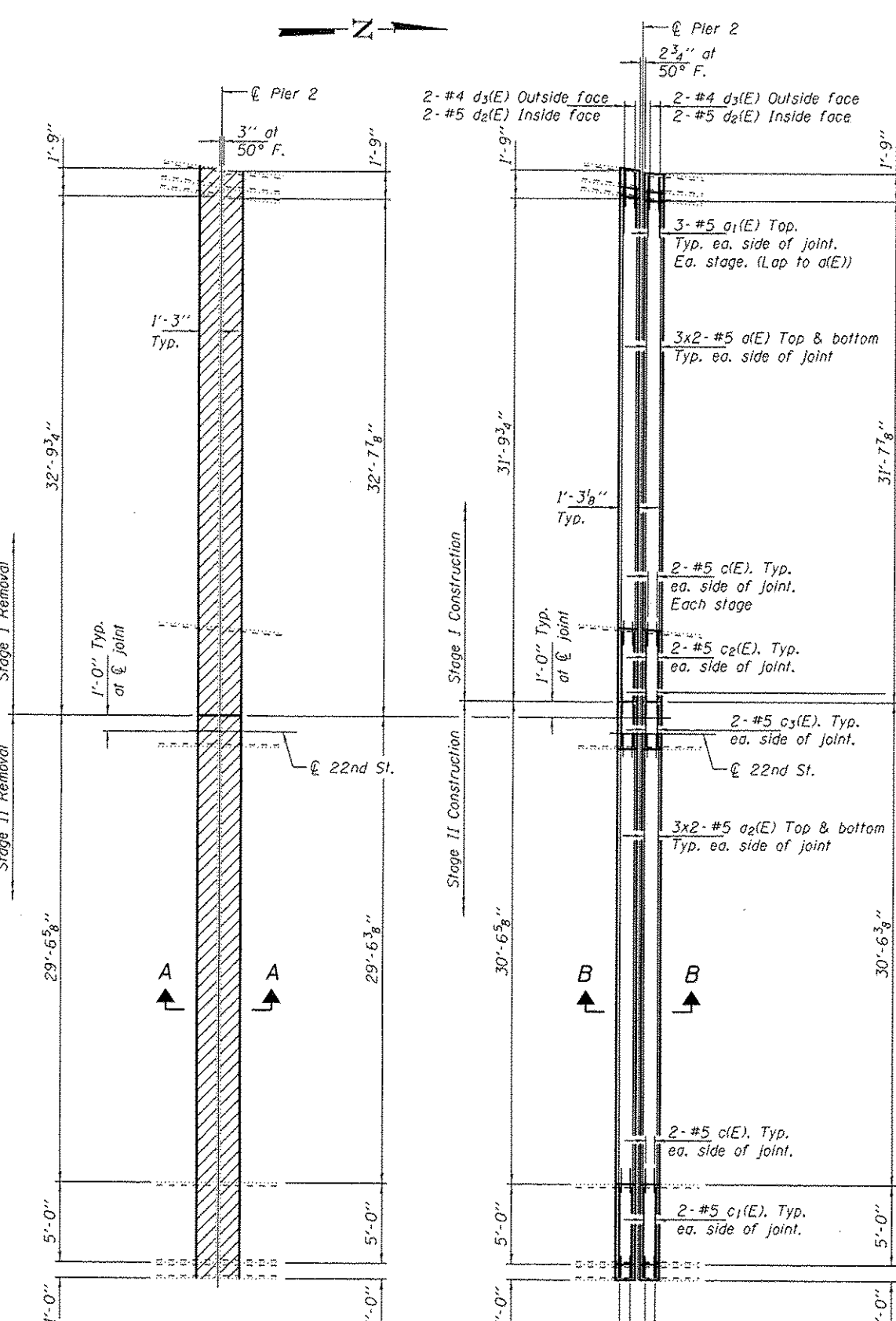
DATE OCTOBER 1, 2015

STATE OF ILLINOIS
 DEPARTMENT OF TRANSPORTATION

PARTIAL PLAN AND ELEVATION
 FAP 320 (IL 121) OVER N & W RR
 SN 058-0120

SHEET NO. 1 OF 8 SHEETS

F.A.P. RTE.	SECTION	COUNTY	TOTAL SHEET NO.
320	*	MACON	15
			CONTRACT NO. 14717
ILLINOIS FED. AID PROJECT			

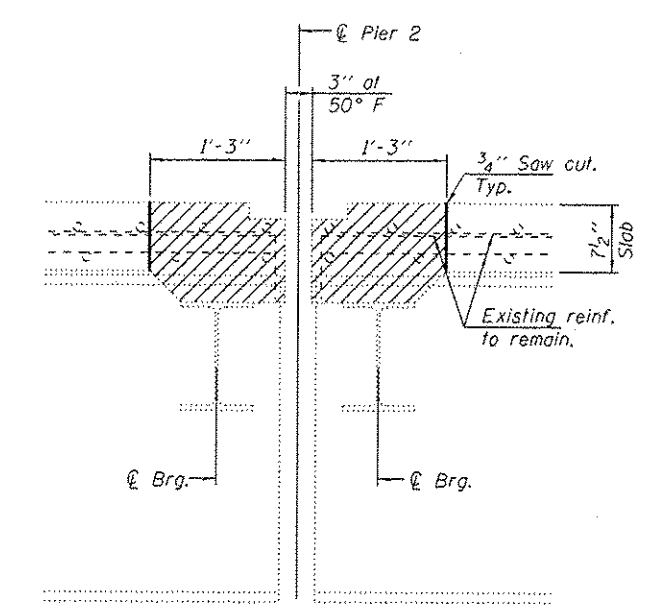


REMOVAL DETAILS

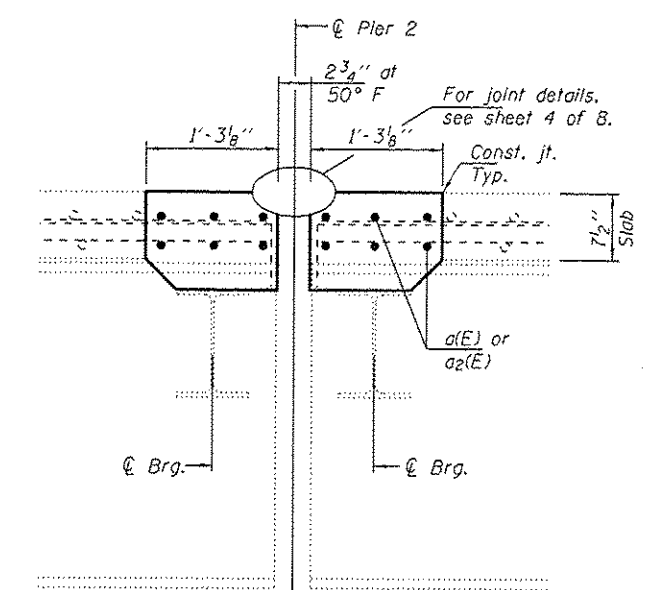
REPLACEMENT DETAILS

See sheet 2 of 8 for Deck Cross Section.

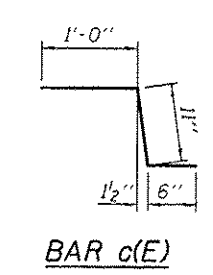
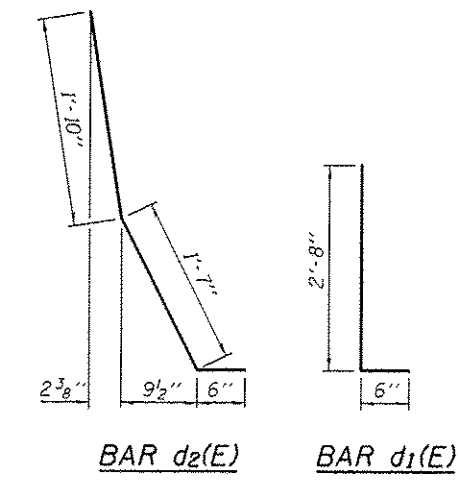
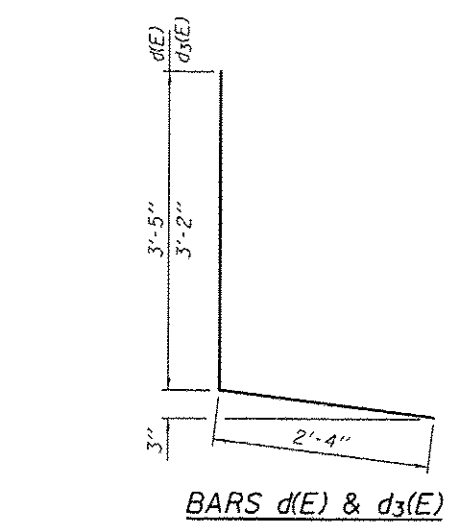
B-Bar splicers (E) for #5 bars. Typ. ea. side of joint. See sheet 2 of 8.



SECTION A-A
Hatched areas indicate removal.



SECTION B-B



MINIMUM BAR LAP
#5 bar = 3'-6"

BILL OF MATERIAL

Bar	No.	Size	Length	Shape
d(E)	24	#5	17'-10"	—
d1(E)	12	#6	4'-0"	—
d2(E)	24	#5	19'-9"	—
c(E)	12	#5	2'-5"	┌
c1(E)	4	#5	5'-6"	—
c2(E)	4	#5	4'-3"	—
c3(E)	4	#5	2'-9"	—
d(E)	4	#4	5'-9"	┌
d1(E)	4	#4	3'-2"	┌
d2(E)	4	#5	3'-11"	┌
d3(E)	4	#4	5'-6"	┌
Concrete Removal			Cu. Yd.	7.4
Concrete Superstructure			Cu. Yd.	7.4
Reinforcement Bars, Epoxy Coated			Lbs.	1130
Preformed Joint Strip Seal			Foot	70
Bar Splicers			Each	16

Bars indicated thus 3x2-#5 etc. indicates 3 lines of bars with 2 lengths per line.

DESIGNED VHV
CHECKED ATH
DRAWN baliva
CHECKED VHV ATH

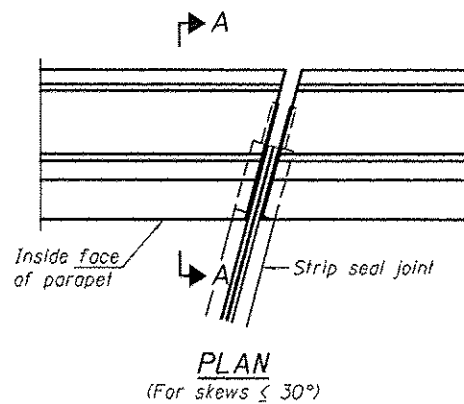
DATE OCTOBER 1, 2015
PASSED *Carl Perry*
ACTING ENGINEER OF BRIDGES AND STRUCTURES

STATE OF ILLINOIS
DEPARTMENT OF TRANSPORTATION

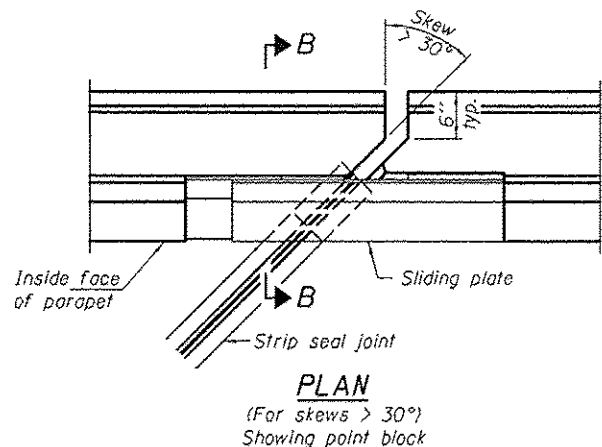
PIER 2 JOINT REPLACEMENT DETAILS
SN 058-0120
SHEET NO. 3 OF 8 SHEETS

F.A.P. RTE.	SECTION	COUNTY	TOTAL SHEETS	SHEET NO.
320	-	MACON	15	9

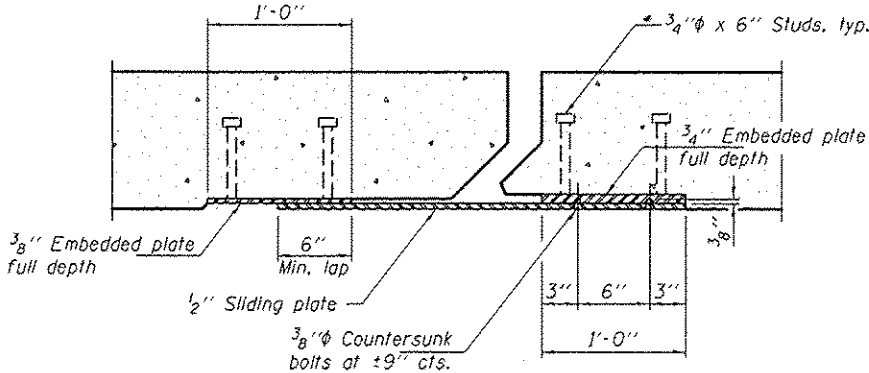
CONTRACT NO. 14717
ILLINOIS FED. AID PROJECT



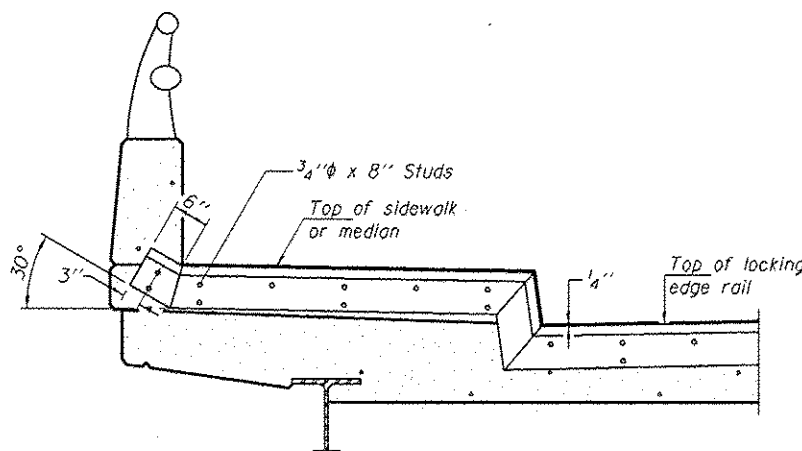
PLAN
(For skews $\leq 30^\circ$)



PLAN
(For skews $> 30^\circ$)
Showing point block

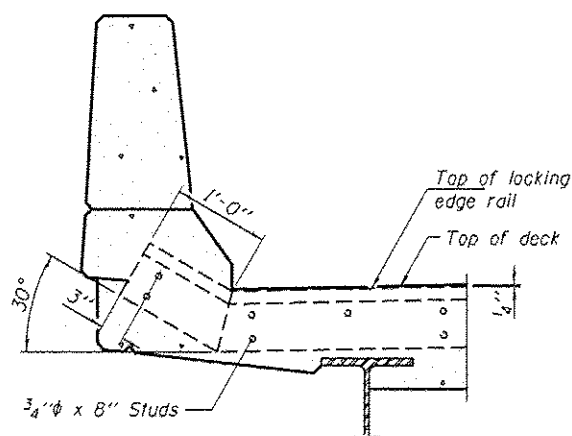


SECTION C-C

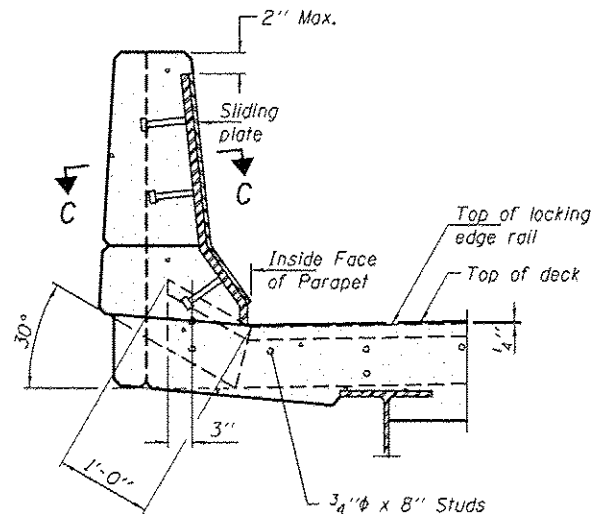


TYPICAL END TREATMENT AT SIDEWALK OR MEDIAN

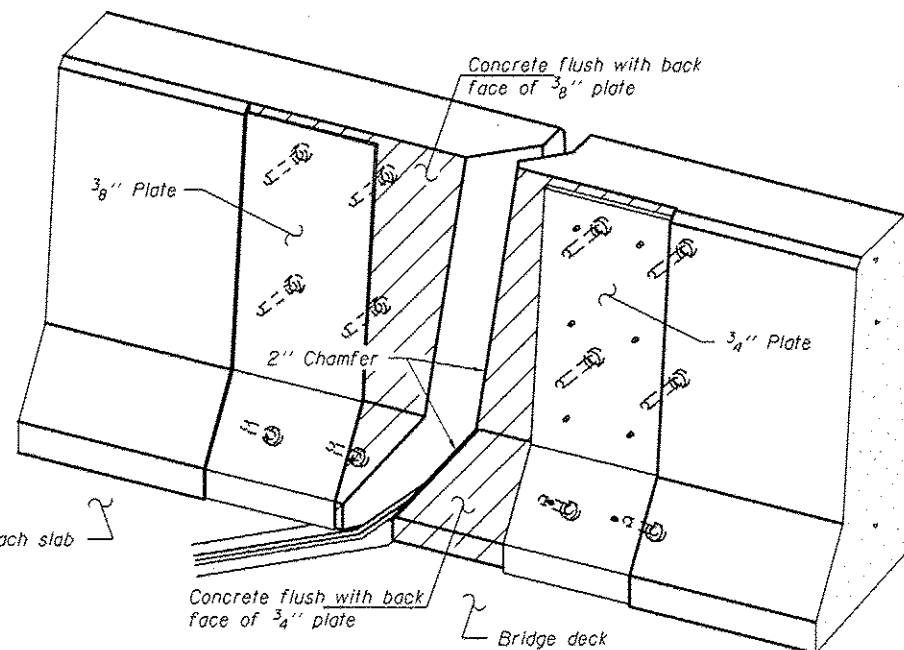
Shorter plates with a single row of studs at 12" cts. may be necessary on medians which are shallower than 9". See manufacturer's recommendation.



SECTION A-A



SECTION B-B



TRIMETRIC VIEW
(Showing back plates only)

Notes:
The strip seal shall be made continuous and shall have a minimum thickness of 1/4". The configuration of the strip seal shall match the configuration of the Locking Edge Rails. Open or "webbed" strip seal gland configurations are not permitted. The gland shall be sized for a maximum rated movement of 4 inches.

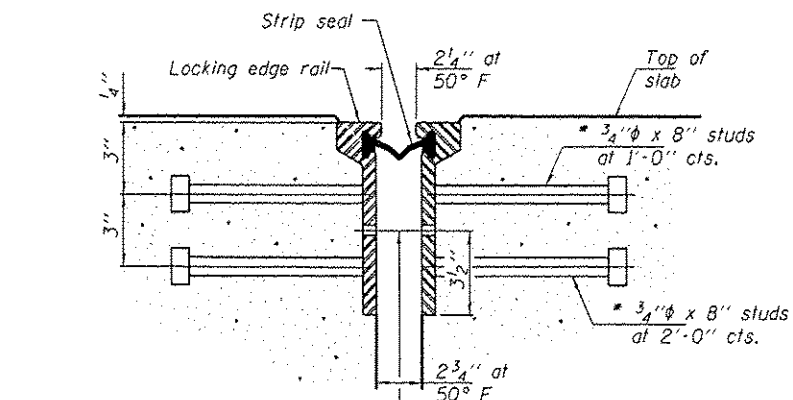
The Locking Edge Rails depicted are conceptual only, except for the minimum dimensions shown. The actual configuration of the Locking Edge Rails and matching strip seal may vary from manufacturer to manufacturer. Flanged edge rails will not be allowed. Locking Edge Rails may be spliced at slope discontinuities.

The manufacturer's recommended installation methods shall be followed.

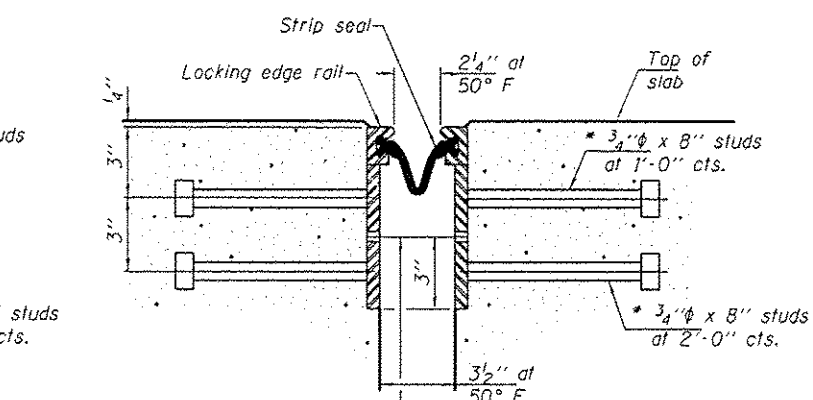
The joint opening and deck dimensions detailed on the superstructure are based on a rolled rail expansion joint. If the Contractor elects to use the welded rail expansion joint, the opening and deck dimensions shall be modified according to the dimensions detailed on this sheet. Required modifications shall be made at no additional cost to the State.

All steel components shall be galvanized after fabrication according to Article 520.03 of the Standard Specifications. Maximum space between rail segments shall be 3/16", sealed with a suitable sealant. Joints in rails within 10 ft. of curbs shall be welded.

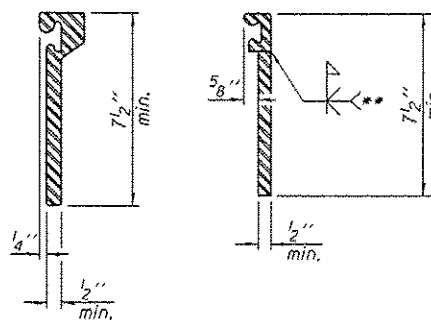
Parapet plates and anchorage studs for skews $> 30^\circ$ included in the cost of Preformed Joint Strip Seal.



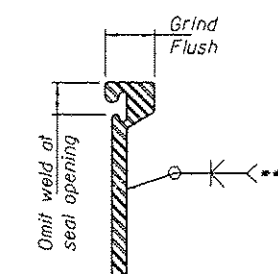
SECTION THRU ROLLED RAIL JOINT



SECTION THRU WELDED RAIL JOINT



ROLLED EXTRUDED RAIL WELDED RAIL



LOCKING EDGE RAIL SPLICE

The inside of the locking edge rail groove shall be free of weld residue. Rolled rail shown, welded rail similar.

LOCKING EDGE RAILS

BILL OF MATERIAL

Item	Unit	Total
Preformed Joint Strip Seal	Foot	70

* Granular or solid flux filled headed studs conforming to Article 1006.32 of the Std. Specs., automatically end welded.

EJ-SSJ

1-27-12

DESIGNED VHV
CHECKED ATH
DRAWN boliva
CHECKED VHV ATH

PASSED

ACTING ENGINEER OF BRIDGES AND STRUCTURES

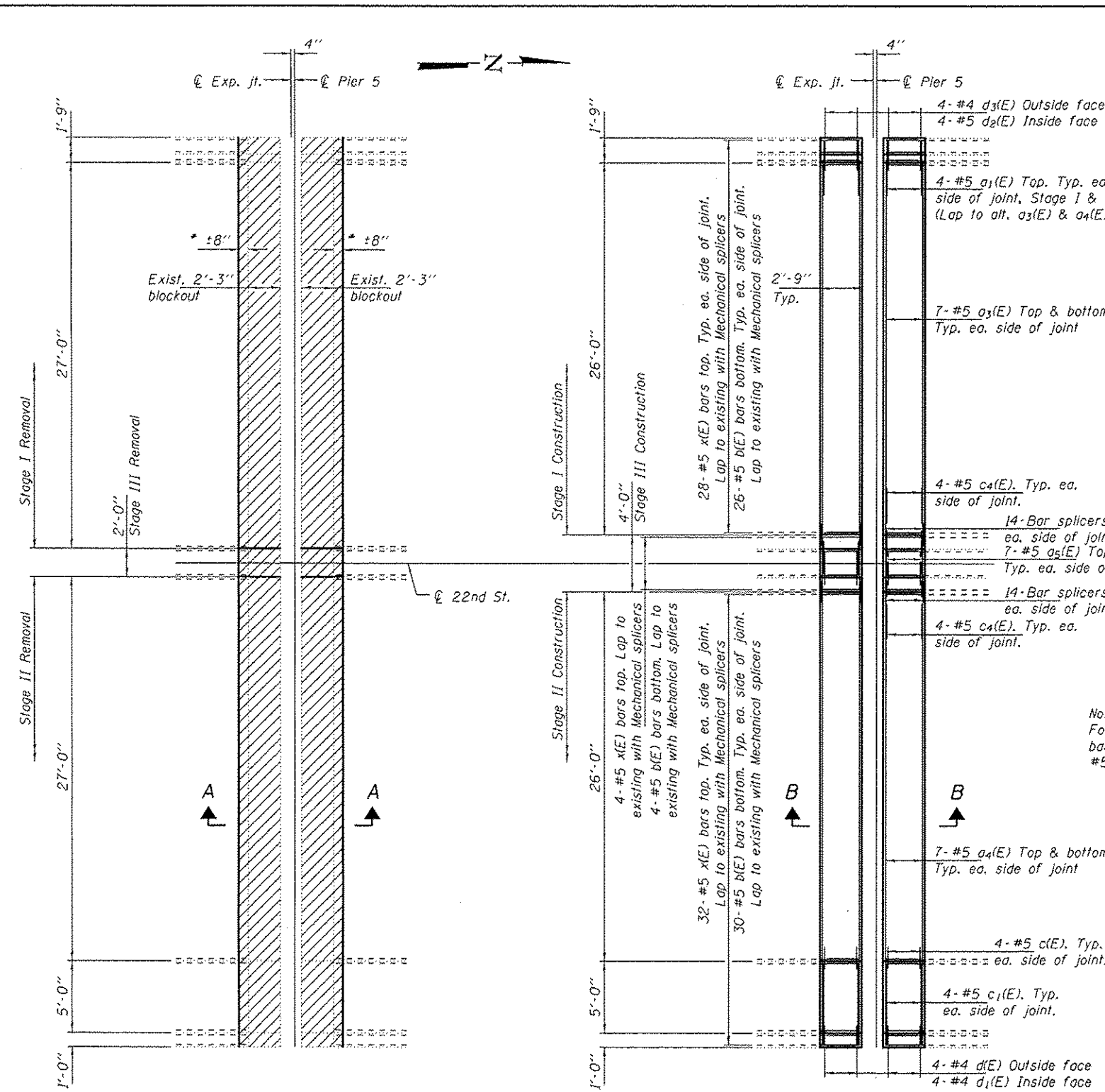
DATE OCTOBER 1, 2015
REVISED
REVISED

STATE OF ILLINOIS
DEPARTMENT OF TRANSPORTATION

PREFORMED JOINT STRIP SEAL
SN 058-0120

SHEET NO. 4 OF 8 SHEETS

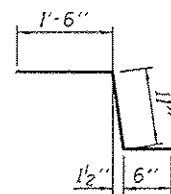
F.A.P. RTE.	SECTION	COUNTY	TOTAL SHEETS	SHEET NO.
320		MAON	15	10
				CONTRACT NO. 7411E
ILLINOIS FED. AID PROJECT				



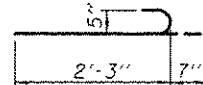
REMOVAL DETAILS

REPLACEMENT DETAILS

See sheet 2 of 8 for Deck Cross Section.



BAR c4(E)

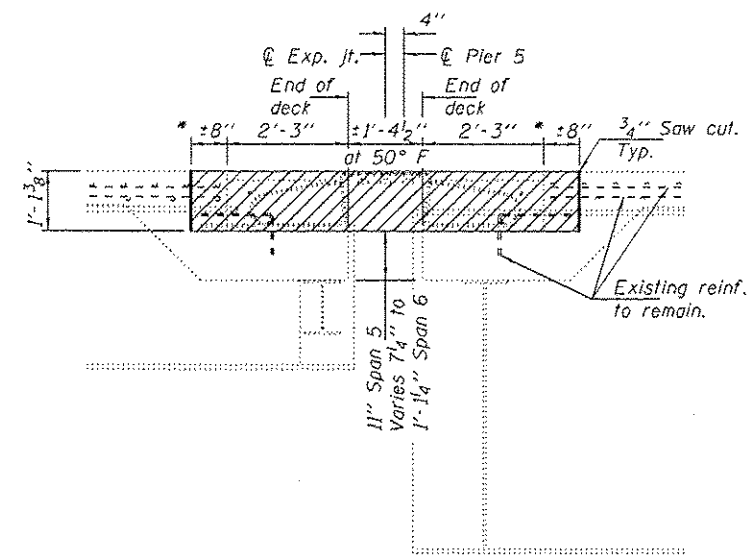


BAR x(E)

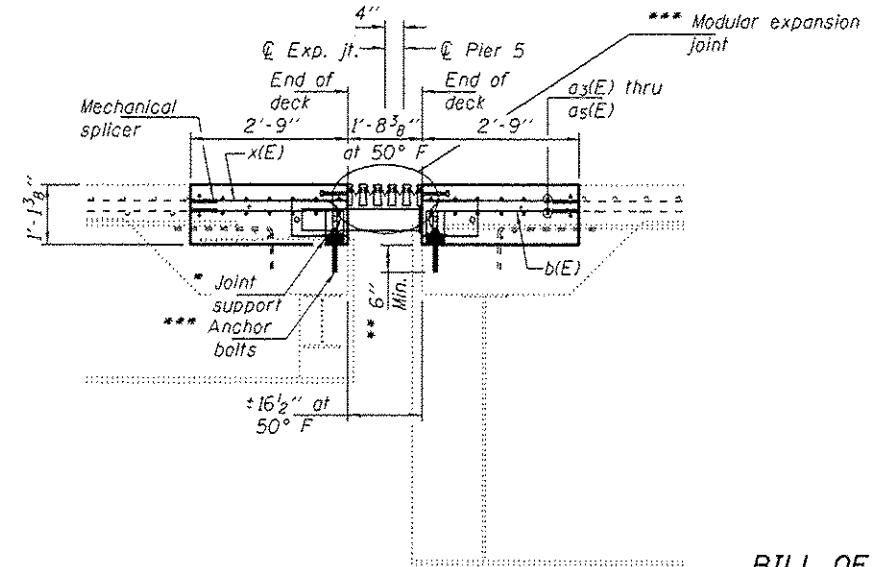
* Remove enough concrete to expose a minimum of 6" of existing rebar.

** Epoxy grout rods in 9" min. holes according to Article 584 of the Standard Specifications.

*** Spacing by joint manufacturer.



SECTION A-A



SECTION B-B

BILL OF MATERIAL

Bar	No.	Size	Length	Shape
a1(E)	16	#6	4'-0"	—
a3(E)	28	#5	27'-5"	—
a4(E)	28	#5	31'-8"	—
a5(E)	28	#5	3'-9"	—
b(E)	120	#5	2'-9"	—
c(E)	8	#5	2'-5"	L
c1(E)	8	#5	5'-6"	—
c4(E)	16	#5	2'-11"	L
d(E)	8	#4	5'-9"	L
d1(E)	8	#4	3'-2"	L
d2(E)	8	#5	3'-11"	L
d3(E)	8	#4	5'-6"	L
x(E)	128	#5	2'-10"	—
Concrete Removal			Cu. Yd.	18.0
Concrete Superstructure			Cu. Yd.	17.0
Reinforcement Bars, Epoxy Coated			Lbs.	2880
Modular Expansion Joint, 15"			Foot	64
Bar Splicers			Each	56
Mechanical Splicers			Each	248

For additional bar details, see sheet 3 of 8.

DESIGNED VHV
CHECKED ATH
DRAWN baliva
CHECKED VHV ATH

PASSED

Carl Perry
ACTING ENGINEER OF BRIDGES AND STRUCTURES

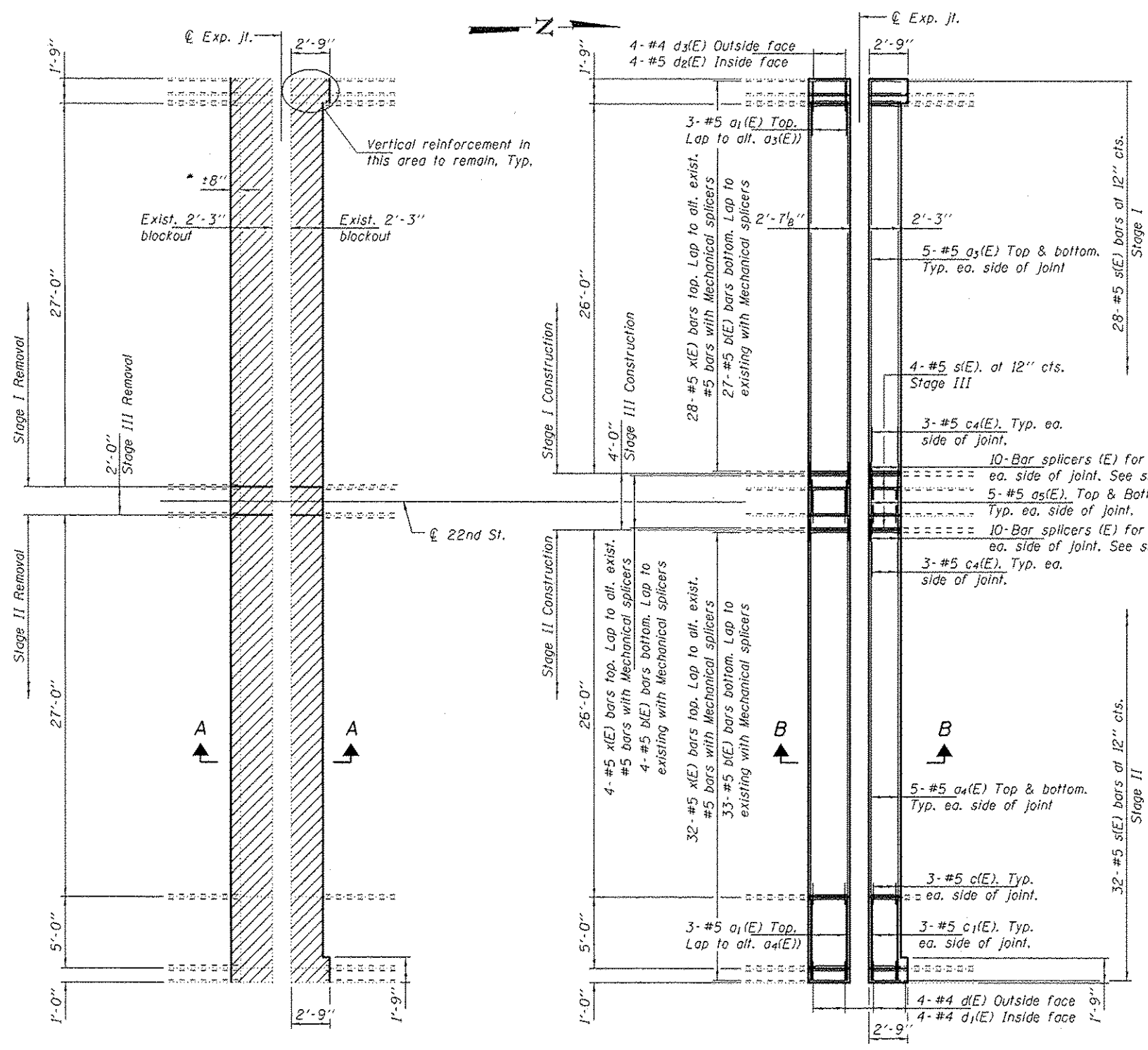
DATE OCTOBER 1, 2015
REVISED
REVISED

STATE OF ILLINOIS
DEPARTMENT OF TRANSPORTATION

PIER 5 JOINT REPLACEMENT DETAILS
SN 058-0120

SHEET NO. 5 OF 8 SHEETS

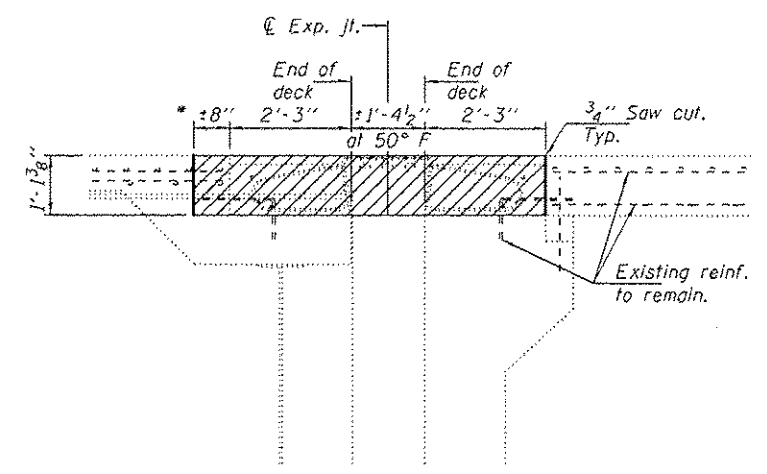
F.A.P. RTE. 320	SECTION	COUNTY	TOTAL SHEETS	SHEET NO.
		MACON	15	11
CONTRACT NO. 74712			ILLINOIS FED. AID PROJECT	



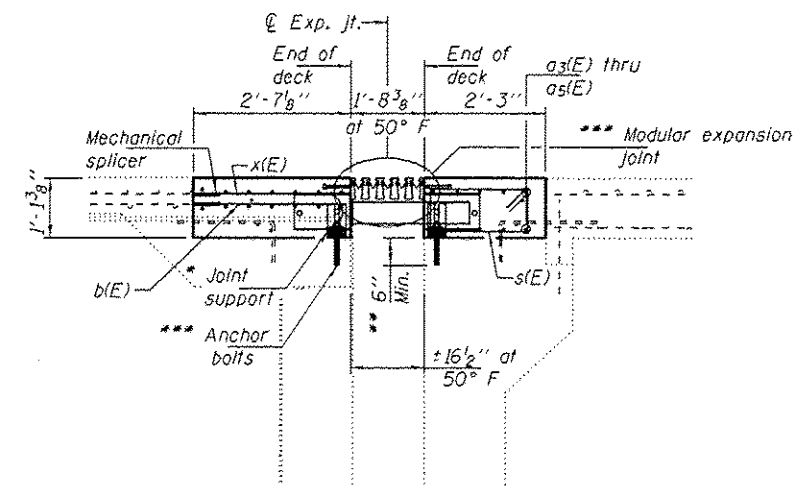
REMOVAL DETAILS

REPLACEMENT DETAILS

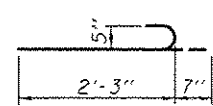
See sheet 2 of 8 for Deck Cross Section.



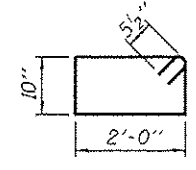
SECTION A-A



SECTION B-B



BAR x(E)



BAR s(E)

BILL OF MATERIAL

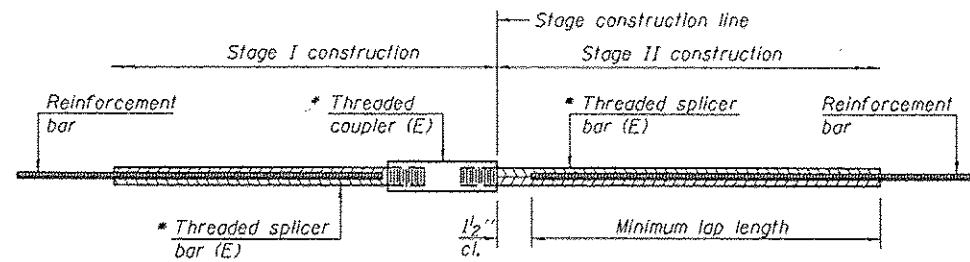
Bar	No.	Size	Length	Shape
a1(E)	6	#6	4'-0"	—
a3(E)	20	#5	27'-5"	—
a4(E)	20	#5	31'-8"	—
a5(E)	20	#5	3'-9"	—
b(E)	64	#5	2'-9"	—
c(E)	6	#5	2'-5"	┘
c1(E)	6	#5	5'-6"	—
c4(E)	12	#5	2'-11"	┘
d(E)	8	#4	5'-9"	L
d1(E)	8	#4	3'-2"	L
d2(E)	4	#5	3'-11"	L
d3(E)	4	#4	5'-6"	L
s(E)	64	#5	6'-7"	□
x(E)	64	#5	2'-10"	┘
Concrete Removal			Cu. Yd.	16.0
Concrete Superstructure			Cu. Yd.	15.0
Reinforcement Bars, Epoxy Coated			Lbs.	2330
Modular Expansion Joint, 15"			Foot	64
Bar Splicers			Each	56
Mechanical Splicers			Each	128

* Remove enough concrete to expose a minimum of 6" of existing rebar.

** Epoxy grout rods in 9" min. holes according to Article 584 of the Standard Specifications.

*** Spacing by joint manufacturer.

For additional bar details, see sheets 3 & 5 of 8.

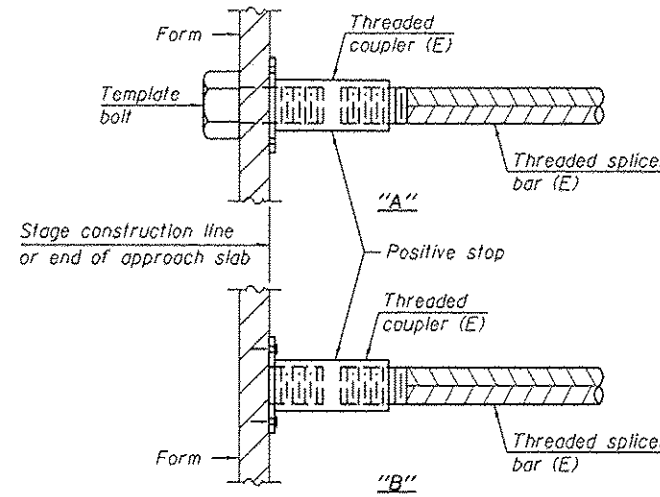


STANDARD BAR SPLICER ASSEMBLY

Threaded splicer bar length = min. lap length + 1/2" + thread length

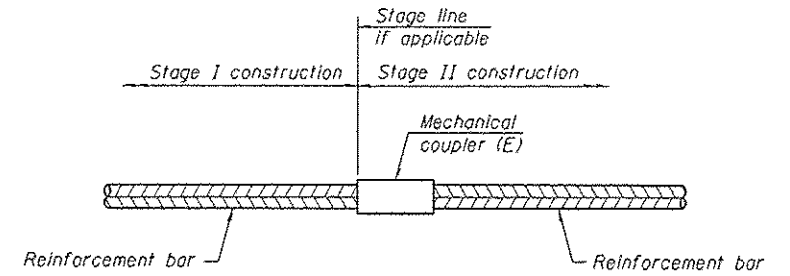
* Epoxy not required on Bar Splicer Assembly components used in conjunction with black bars.

Location	Bar size	No. assemblies required	Minimum lap length
Span 2 N. End of deck	#5	8	3'-6"
Span 3 S. End of deck	#5	8	3'-6"
Span 5 N. End of deck	#5	28	3'-6"
Span 6 S. End of deck	#5	28	3'-6"
Span 16 N. End of deck	#5	28	3'-6"
N. Appr S. End of deck	#5	28	3'-6"



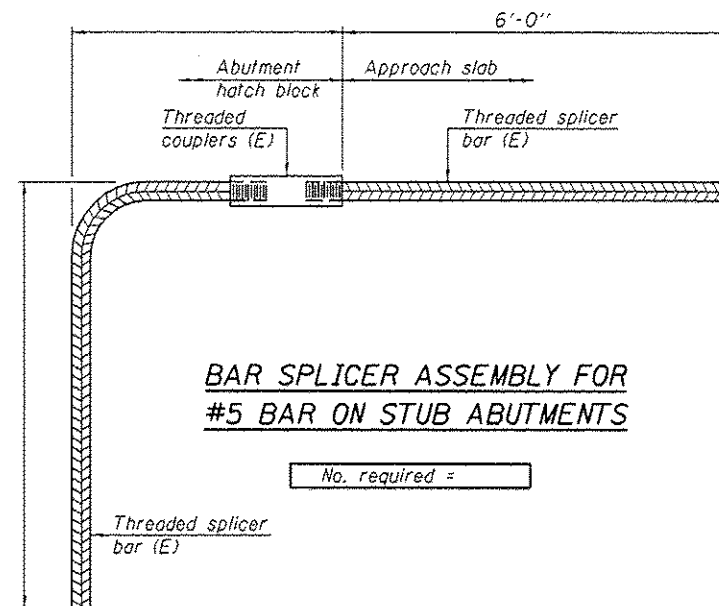
INSTALLATION AND SETTING METHODS

"A": Set bar splicer assembly by means of a template bolt.
 "B": Set bar splicer assembly by nailing to wood forms or cementing to steel forms.
 (E) : Indicates epoxy coating.



STANDARD MECHANICAL SPLICER

Location	Bar size	No. assemblies required
Span 5 N. End of deck	#5	124
Span 6 S. End of deck	#5	124
Span 16 N. End of deck	#5	128



NOTES

Splicer bars shall be deformed with threaded ends and have a minimum 60 ksi yield strength.
 All reinforcement shall be lapped and tied to the splicer bars.
 Bar splicer assemblies shall be epoxy coated according to the requirements for reinforcement bars. See Section 508 of the Standard Specifications.
 See approved list of bar splicer assemblies and mechanical splicers for alternatives.

BSD-1

6-8-15

DESIGNED VHV
 CHECKED ATH
 DRAWN baliva
 CHECKED VHV ATH

PASSED

ACTING ENGINEER OF BRIDGES AND STRUCTURES

DATE OCTOBER 1, 2015

REVISED
 REVISED

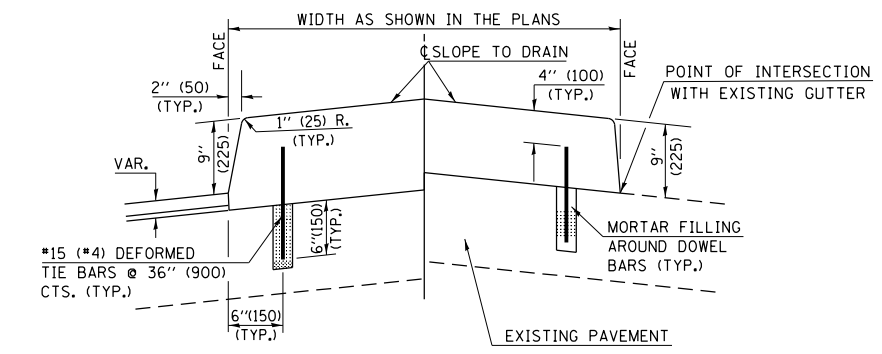
STATE OF ILLINOIS
 DEPARTMENT OF TRANSPORTATION

BAR SPLICER ASSEMBLY AND MECHANICAL SPLICER DETAILS
 SN 058-0120

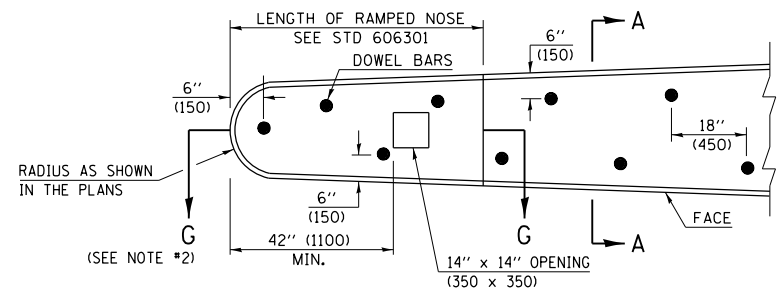
SHEET NO. 8 OF 8 SHEETS

F.A.P. RTE.	SECTION	COUNTY	TOTAL SHEETS	SHEET NO.
320		MACON	15	14
CONTRACT NO. 74717			ILLINOIS FED. AID PROJECT	

DETAIL OF CONCRETE MEDIAN, TYPE SB-9 (SB-22.3) (DOWELED)



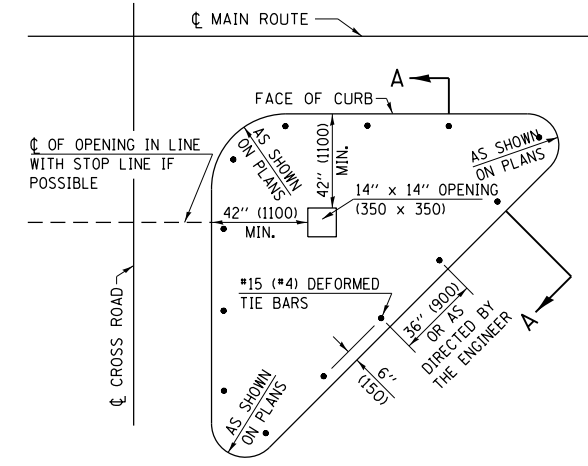
SECTION A-A



PLAN OF MEDIAN

GENERAL NOTES

1. THE GENERAL NOTES FOR STANDARD 606301 SHALL APPLY.
2. SECTION G-G SHALL BE THE SAME AS SHOWN ON STANDARD 606301.
3. DOWEL BARS @ 36" (900) CTS. OR AS DIRECTED BY THE ENGINEER.
4. THIS WORK WILL BE PAID FOR AT THE CONTRACT UNIT PRICE PER 50 FOOT (m2) FOR CONCRETE MEDIAN, TYPE SB-9 (SM-15) (DOWELED), INCLUDING THE COST OF FURNISHING AND INSTALLING THE DOWEL BARS, MORTAR FILLING, AND THE REMOVAL AND DISPOSAL OF THE EXISTING PAVEMENT FOR THE 14" x 14" (350 x 350) OPENING, IF REQUIRED, AND NO ADDITIONAL COMPENSATION WILL BE ALLOWED.



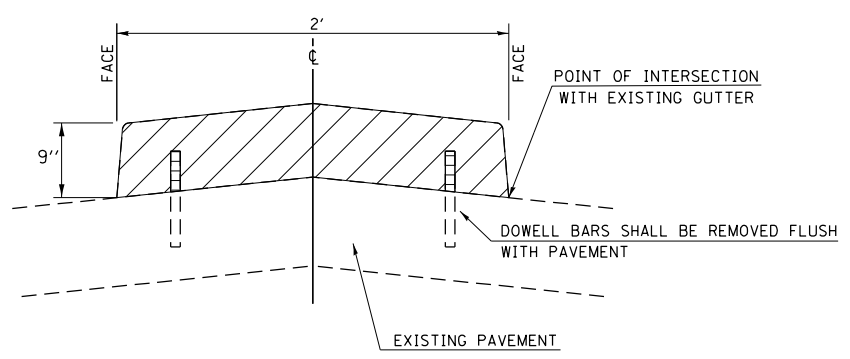
PLAN OF CORNER ISLAND

		REVISIONS	
NAME	DATE	NAME	DATE
DESIGNED	J.M.H. 1-89		
CHECKED	F.M.S. 1-89	J.Y.B.	06/02
CADD NO.	A-5.07	K.A.G.	06/03

ALL DIMENSIONS ARE IN INCHES (MILLIMETERS) UNLESS OTHERWISE SHOWN.

MEDIAN REMOVAL (SPECIAL)

STA. 18+94.90 TO STA. 19+56.70



FILE NAME =	USER NAME = steffenk	DESIGNED -	REVISED -
pw:\IL\084EBIDINTEG\illinois.gov\PIWIDOT\Documents\DOT Offices\District 7\Projects\7477\Drawings\CAD\Drawings\7477-shd-details.dwg		CHECKED -	REVISED -
Default	PLOT DATE = 8/26/2015	DATE -	REVISED -

**STATE OF ILLINOIS
DEPARTMENT OF TRANSPORTATION**

DISTRICT DETAILS	
SCALE: NA	SHEET 1 OF 1 SHEETS STA. TO STA.

•D7 BRIDGE REPAIRS 2016-4				
F.A.P. RTE.	SECTION	COUNTY	TOTAL SHEETS	SHEET NO.
320	•	MACON	15	15
CONTRACT NO. 74717				
ILLINOIS FED. AID PROJECT				