

STATE OF ILLINOIS
DEPARTMENT OF TRANSPORTATION
DIVISION OF HIGHWAYS

**PROPOSED
HIGHWAY PLANS**

F.A.P. ROUTE 781 (IL. RTE. 33)
SECTION 4M

**BIKEWAY
JASPER COUNTY**
C-97-081-15

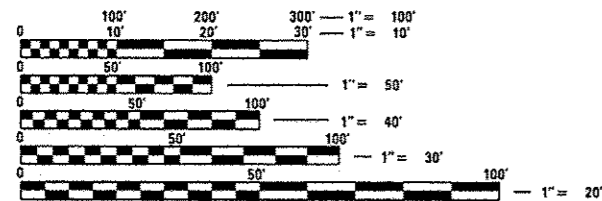
FOR INDEX OF SHEETS, SEE SHEET NO. 2

ADT = 3,200 (2013)

F.A.P. RTE.	SECTION	COUNTY	TOTAL SHEETS	SHEET NO.
781	4M	JASPER	15	1
		ILLINOIS	CONTRACT NO. 74727	

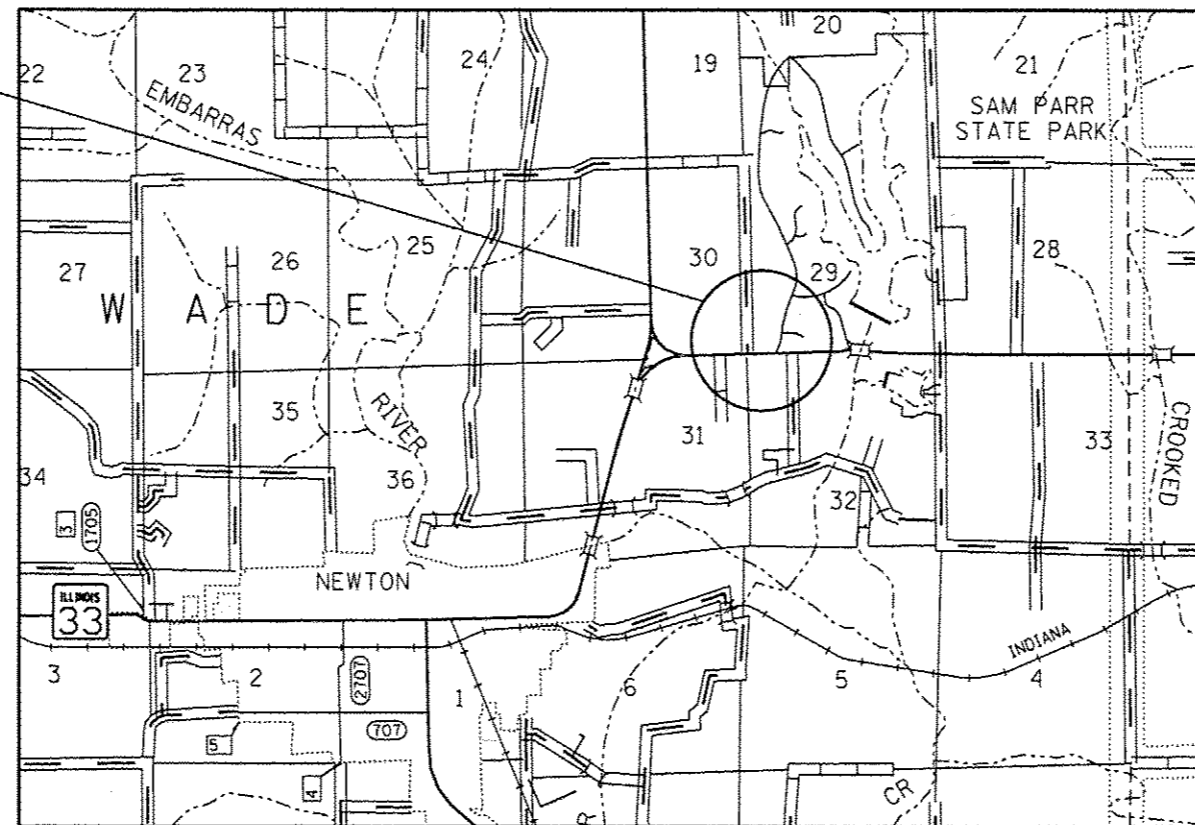


F.A.P. RTE. 781 (IL. RTE. 33)
SECTION 4M
JASPER COUNTY
BEGINS STATION 0+00
ENDS STATION 4+77.70



FULL SIZE PLANS HAVE BEEN PREPARED USING STANDARD ENGINEERING SCALES. REDUCED SIZED PLANS WILL NOT CONFORM TO STANDARD SCALES. IN MAKING MEASUREMENTS ON REDUCED PLANS, THE ABOVE SCALES MAY BE USED.

J.U.L.I.E.
JOINT UTILITY LOCATION INFORMATION FOR EXCAVATION
1-800-892-0123
OR 811



PROJECT ENGINEER: TOM RONAN
PROJECT MANAGER: KALEB HIRTZEL
PHONE: (217)-342-8314
CONTRACT NO. 74727

LENGTH = 477.70 FT. = 0.09 MILE

STATE OF ILLINOIS
DEPARTMENT OF TRANSPORTATION
DIVISION OF HIGHWAYS

SUBMITTED July 29 20 15
Roger L. Dinkel
DEPUTY DIRECTOR OF HIGHWAYS, REGION ENGINEER

John D. Baranzoni
ENGINEER OF DESIGN AND ENVIRONMENT

Amr Osman
DIRECTOR OF HIGHWAYS, CHIEF ENGINEER

**PRINTED BY THE AUTHORITY
OF THE STATE OF ILLINOIS**

INDEX OF SHEETS

SHEET NO.	ITEM
1	COVER SHEET
2	INDEX OF SHEETS & GENERAL NOTES
3	SUMMARY OF QUANTITIES
4	TYPICAL SECTION
5	SCHEDULES OF QUANTITIES & DETAILS
6	HORIZONTAL CURVE DATA
7	PLAN AND PROFILE
8-15	CROSS SECTIONS

THE FOLLOWING STANDARDS ARE A PART OF THESE PLANS AND ARE INCLUDED AFTER SHEET NO. 15:

STD. NO.	DESCRIPTION
000001-06	STANDARD SYMBOLS, ABBREVIATIONS AND PATTERNS
001006	DECIMAL OF AN INCH & OF A FOOT
280001-07	TEMPORARY EROSION CONTROL SYSTEMS
542401-01	METAL END SECTION FOR PIPE CULVERTS
701001-02	OFF-RD OPERATIONS, 2L, 2W, MORE THAN 15' AWAY
701006-05	OFF-RD OPERATIONS, 2L, 2W, 15' TO 24" FROM PAVEMENT EDGE
701201-04	LANE CLOSURE, 2L, 2W, DAY ONLY, FOR SPEEDS >= 45 MPH
701801-05	SIDEWALK, CORNER OR CROSSWALK CLOSURE
701901-04	TRAFFIC CONTROL DEVICES
720011-01	METAL POSTS FOR SIGNS, MARKERS AND DELINEATORS
729001-01	APPLICATIONS OF TYPES A AND B METAL POSTS (FOR SIGNS & MARKERS)

GENERAL NOTES

THIS SECTION SHALL BE CONSTRUCTED IN ACCORDANCE WITH THE PLANS; THE "STANDARD SPECIFICATIONS FOR ROAD AND BRIDGE CONSTRUCTION", ADOPTED JANUARY 1, 2012; THE "SUPPLEMENTAL SPECIFICATIONS AND RECURRING SPECIAL PROVISIONS", ADOPTED JANUARY 1, 2015, AND THE SPECIAL PROVISIONS INCLUDED IN THIS PROPOSAL.

THE WORK INCLUDED IN THIS SECTION IS LOCATED NEAR THE ENTRANCE TO SAM PARR STATE PARK ON FAP ROUTE 781 (IL 33) IN JASPER COUNTY. THE WORK INCLUDED IN THIS SECTION CONSISTS OF CONSTRUCTION OF A SHARED USE PATH, EARTH EXCAVATION, PIPE CULVERTS, SEEDING, SIGNS AND ANY OTHER WORK NECESSARY TO COMPLETE THIS SECTION.

ALL ELEVATIONS SHOWN IN PLANS ARE BASED ON U.S.C.S. DATUM.

ALL DISTURBED AREAS WITHIN THE CONSTRUCTION LIMITS SHALL BE FERTILIZED AND SEED. SEEDING SHALL BE CLASS 2 IN ACCORDANCE WITH THE SPECIAL PROVISIONS AND THE APPLICABLE ARTICLES OF SECTION 250 OF THE STANDARD SPECIFICATIONS.

THE LOCATIONS AND/OR DEPTHS OF UNDERGROUND UTILITIES SHOWN HAVE BEEN TAKEN FROM INFORMATION FURNISHED BY THE UTILITY OWNERS AND MUST BE CONSIDERED APPROXIMATE. FIELD MARKINGS OF FACILITIES IN CRITICAL AREAS MAY BE OBTAINED BY PROVIDING A MINIMUM OF 96 HOURS ADVANCED NOTICE THROUGH THE J.U.L.I.E. SYSTEM BY CALLING 800-892-0123.

THE DISTRICT TRAFFIC OPERATIONS ENGINEER SHALL BE CONTACTED A MINIMUM OF 2 WEEKS PRIOR TO THE OPENING OF THE SHARED USE PATH BY CALLING 217-342-8286.

ALL EARTH EXCAVATION REQUIRED ADJACENT TO AN EXISTING POWER POLE SHALL BE DUG BY HAND TO PROTECT THE POLE FROM DAMAGE.

FILE NAME =	USER NAME = staff@ndk	DESIGNED -	REVISED -	STATE OF ILLINOIS DEPARTMENT OF TRANSPORTATION	INDEX OF SHEETS, STANDARDS AND GENERAL NOTES	F.A.P. RTE.	SECTION	COUNTY	TOTAL SHEETS	SHEET NO.
p:\118048\BID\INTEG\Illinois.gov\PI007\Documents\DOT Offices\District 7\Projects\7472\DRAWING\CAD\Drawings\0774727-sht-index.dwg	Documents\DOT Offices\District 7\Projects\7472\DRAWING\CAD\Drawings\0774727-sht-index.dwg	DRAWN -	REVISED -			781	4M	JASPER	15	2
Default	PLOT SCALE = 100.0000' / 1" =	CHECKED -	REVISED -							
	PLOT DATE = 8/13/2015	DATE -	REVISED -		SCALE: N/A	SHEET 1	OF 1	SHEETS	STA.	TO STA.
										CONTRACT NO. 74727
										ILLINOIS FED. AID PROJECT

SUMMARY OF QUANTITIES			TOTAL QUANTITIES	CONSTRUCTION TYPE CODE		
CODE NO	ITEM	UNIT		021		
20200100	EARTH EXCAVATION	CU YD	193	193		
20400800	FURNISHED EXCAVATION	CU YD	11	11		
28000250	TEMPORARY EROSION CONTROL SEEDING	POUND	37	37		
28000305	TEMPORARY DITCH CHECKS	FOOT	30	30		
28000400	PERIMETER EROSION BARRIER	FOOT	250	250		
28000500	INLET AND PIPE PROTECTION	EACH	2	2		
42400300	PORTLAND CEMENT CONCRETE SIDEWALK 6 INCH	SO FT	4727	4727		
42400410	PORTLAND CEMENT CONCRETE SIDEWALK 8 INCH	SO FT	50	50		
42400800	DETECTABLE WARNINGS	SO FT	40	40		
48102100	AGGREGATE WEDGE SHOULDER, TYPE B	TON	4	4		
54215550	METAL END SECTIONS 15"	EACH	2	2		
54215553	METAL END SECTIONS 18"	EACH	2	2		
542C0220	PIPE CULVERTS, CLASS C, TYPE 1 15"	FOOT	24	24		
542C0223	PIPE CULVERTS, CLASS C, TYPE 1 18"	FOOT	18	18		

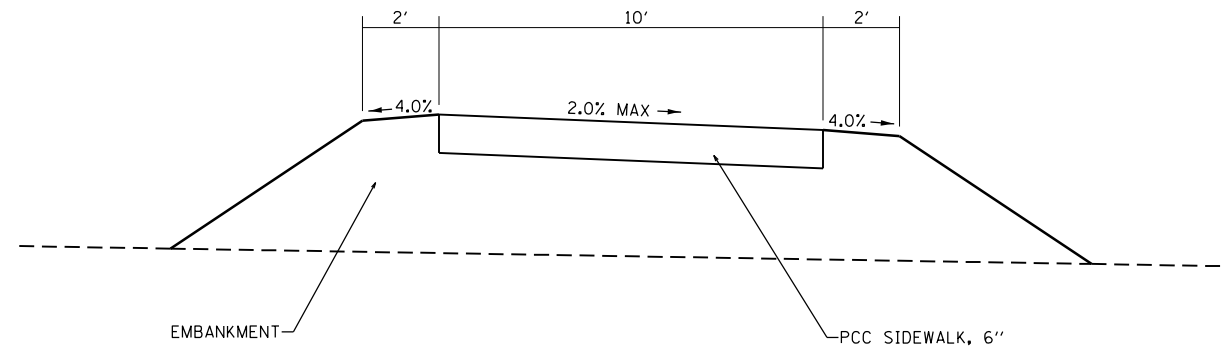
SUMMARY OF QUANTITIES			TOTAL QUANTITIES	CONSTRUCTION TYPE CODE		
CODE NO	ITEM	UNIT		021		
67000500	ENGINEER'S FIELD OFFICE, TYPE B	CAL MO	2	2		
67100100	MOBILIZATION	LSUM	1	1		
70100450	TRAFFIC CONTROL AND PROTECTION, STANDARD 701201	LSUM	1	1		
70102640	TRAFFIC CONTROL AND PROTECTION, STANDARD 701801	LSUM	1	1		
70103815	TRAFFIC CONTROL SURVEILLANCE	CAL DA	5	5		
* 72000100	SIGN PANEL - TYPE 1	SQ FT	16	16		
* 72900100	METAL POST - TYPE A	FOOT	45	45		
X2501000	SEEDING, CLASS 2 (SPECIAL)	ACRE	0.3	0.3		
X7015005	CHANGEABLE MESSAGE SIGN	CAL DA	28	28		
Z0004002	BOLLARDS	EACH	1	1		

* SPECIALTY ITEM

FILE NAME #	USER NAME #	DESIGNED -	REVISED -	STATE OF ILLINOIS DEPARTMENT OF TRANSPORTATION	SUMMARY OF QUANTITIES				F.A.P. RTE.	SECTION	COUNTY	TOTAL SHEETS	SHEET NO.
pm\1\884EBID\INTEG.Illinois.gov\1007\Documents\1007 Offices\District 7\Projects\7472\DRAWING\CAD\Sheets\0774727-htc-500.dgn		CHECKED -	REVISED -		SCALE: N/A	SHEET 1	OF 1	SHEETS	STA.	TO STA.	JASPER	15	3
Default		DATE -	REVISED -						CONTRACT NO. 74727				
									ILLINOIS FED. AID PROJECT				

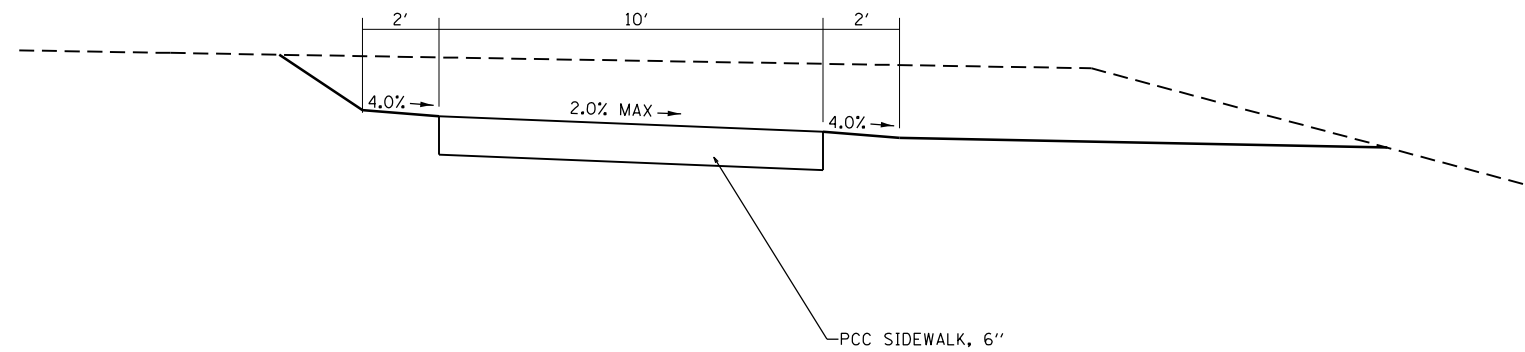
TYPICAL CROSS SECTION

STA. 0+00 TO STA. 1+98
 STA. 2+89 TO STA. 3+96
 STA. 4+53 TO STA. 4+72.70



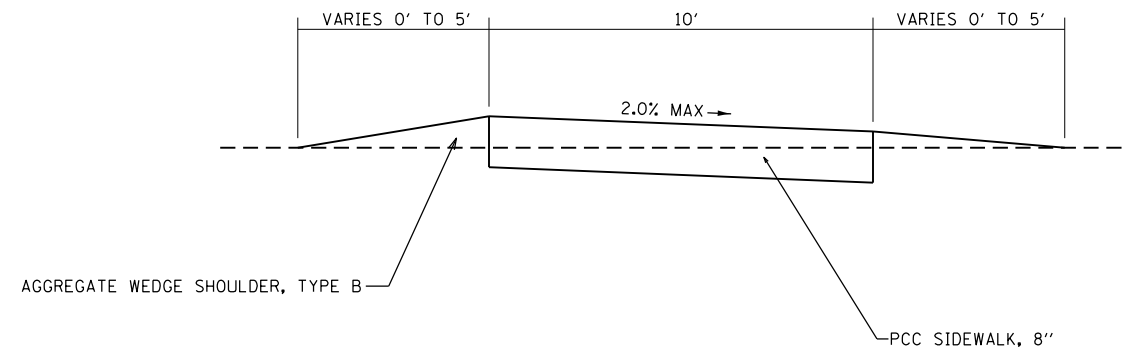
TYPICAL CROSS SECTION

STA. 1+98 TO STA. 2+89
 STA. 3+96 TO STA. 4+53



TYPICAL CROSS SECTION

STA. 4+72.70 TO STA. 4+77.70

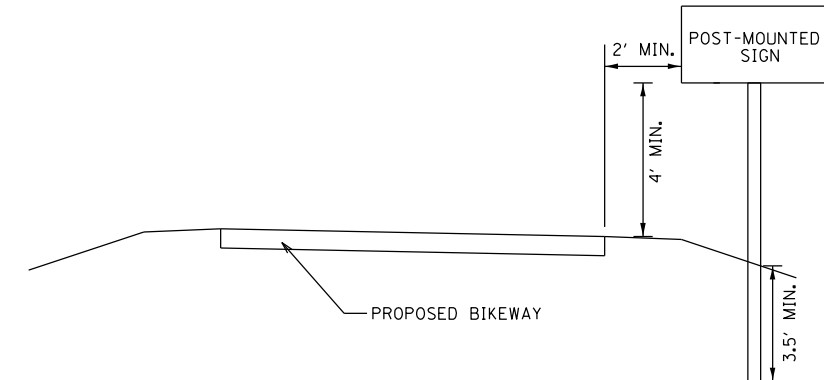


FILE NAME =	USER NAME = steffenmk	DESIGNED -	REVISED -	STATE OF ILLINOIS DEPARTMENT OF TRANSPORTATION	TYPICAL CROSS SECTIONS			F.A.P. RTE.	SECTION	COUNTY	TOTAL SHEETS	SHEET NO.
p:\11084EBIDINTEG.illinois.gov\PI\DOT\Documents\DOT Offices\District 7\Projects\74727\CAD\Drawings\0774727-sht-typical.dwg		DRAWN -	REVISED -		781	4M	JASPER	15	4			
Default	PLOT SCALE = 100.0000' / in.	CHECKED -	REVISED -		CONTRACT NO. 74727							
	PLOT DATE = 8/13/2015	DATE -	REVISED -		SCALE: N/A	SHEET 1 OF 1 SHEETS	STA. TO STA.	ILLINOIS FED. AID PROJECT				

EARTHWORK SCHEDULE			EARTH EXCAVATION	EARTH EXCAVATION ADJUSTED FOR SHRINKAGE (25%)	EARTH FILL	EARTHWORK BALANCE, WASTE (+) OR SHORTAGE (-)
STATION	TO	STATION	CU YD	CU YD	CU YD	CU YD
0+00	TO	0+16	1.5	1.1	12.5	-11.4
0+16	TO	0+25	0.0	0.0	8.3	-8.3
0+25	TO	0+50	0.0	0.0	5.0	-5.0
0+50	TO	0+75	0.1	0.0	2.6	-2.6
0+75	TO	1+00	0.1	0.0	3.0	-3.0
1+00	TO	1+25	0.1	0.0	3.2	-3.1
1+25	TO	1+50	0.1	0.0	2.8	-2.8
1+50	TO	1+75	0.1	0.1	2.4	-2.4
1+75	TO	2+00	3.6	2.7	1.0	1.7
2+00	TO	2+25	22.9	17.2	0.0	17.2
2+25	TO	2+50	36.1	27.1	0.0	27.1
2+50	TO	2+75	26.5	19.9	0.0	19.9
2+75	TO	3+00	9.8	7.4	5.5	1.8
3+00	TO	3+20.97	0.0	0.0	16.6	-16.6
3+20.97	TO	3+25	0.0	0.0	4.7	-4.7
3+25	TO	3+38.07	0.0	0.0	15.9	-15.9
3+38.07	TO	3+50	0.0	0.0	15.3	-15.3
3+50	TO	3+75	0.0	0.0	23.1	-23.1
3+75	TO	4+00	11.6	8.7	6.8	2.0
4+00	TO	4+25	33.4	25.0	0.0	25.0
4+25	TO	4+50	38.7	29.0	0.0	29.0
4+50	TO	4+59.29	6.3	4.7	10.2	-5.4
4+59.29	TO	4+75	1.8	1.4	17.2	-15.8
4+75	TO	4+77.70	0.6	0.5	0.0	0.5
TOTALS:			193	145	156	-11

SIDEWALK SCHEDULE				LENGTH	PORTLAND CEMENT CONCRETE SIDEWALK, 6"	PORTLAND CEMENT CONCRETE SIDEWALK, 8"	AGGREGATE WEDGE SHOULDER, TYPE B
STATION	TO	STATION	FOOT	SO FT	SO FT	TON	
0+00	TO	4+72.70	472.7	4727	0.0	2.0	
4+72.70	TO	4+77.70	5.0	0	50.0	2.0	
TOTALS:			477.7	4727	50	2	

SIGN SCHEDULE				SIGN PANEL - TYPE I	METAL POST - TYPE A
STATION	SIDE	SO FT	FOOT		
R5-3 SIGN					
0+02	RT	4	9		
4+65.70	RT	4	9		
R1-1 SIGN					
0+02	LT	2.25	9		
4+65.70	LT	2.25	9		
M4-6 SIGN					
3+77.70	RT	0.5			
D11-1 SIGN					
3+77.70	RT	3	9		
TOTALS:		16.0	45		



SIGN PLACEMENT DETAIL

CONTROL POINTS

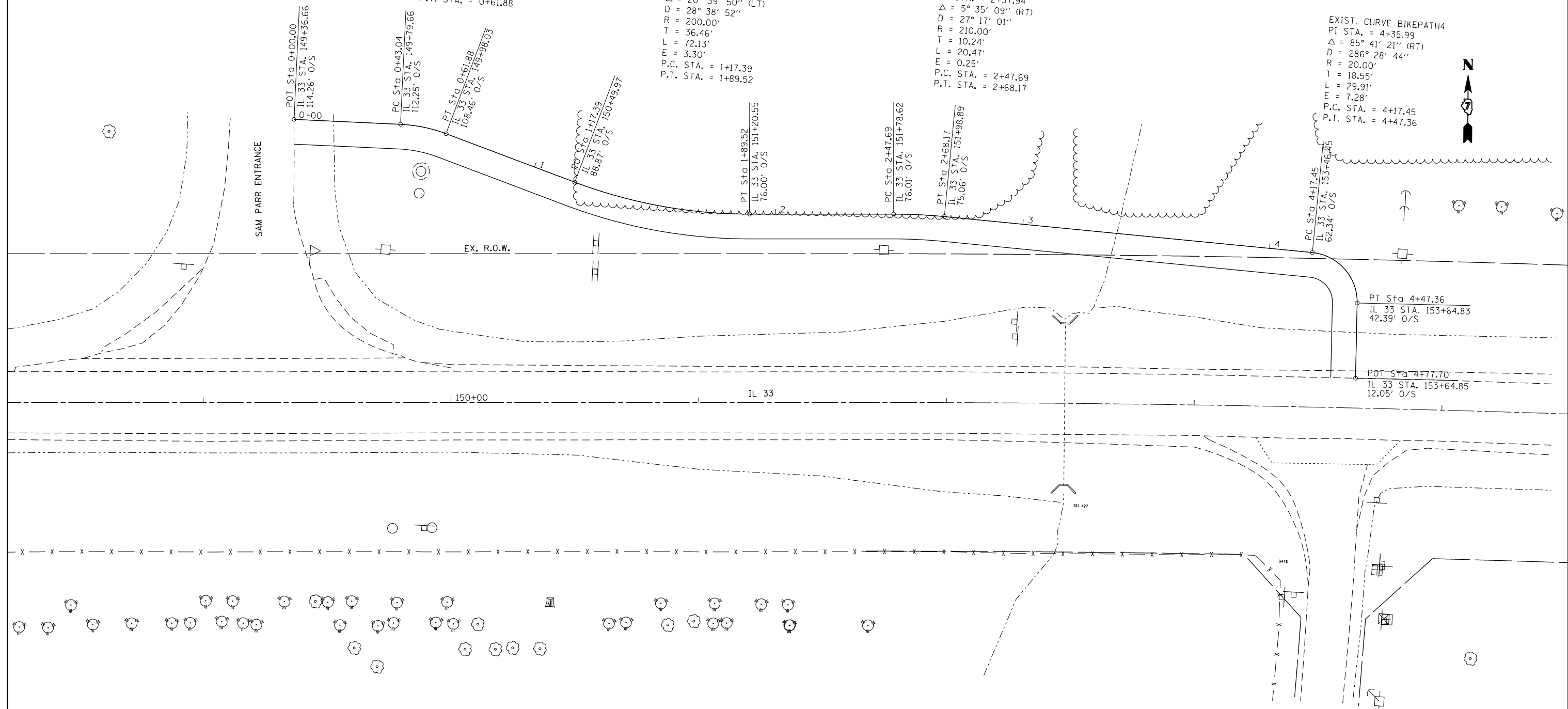
TRAV #	STATION	OFFSET	ELEV.	NORTHING	EASTING
500	146+00.77	33.99' RT	516.846	853612.437	1042578.365
501	148+47.76	57.64' LT	520.527	853719.239	1042819.182
503	148+47.94	277.07' LT	523.259	853938.258	1042805.729
502	153+21.73	45.52' RT	519.361	853644.332	1043297.847

EXIST. CURVE BIKEPATH1
 PI STA. = 0+52.54
 $\Delta = 17^\circ 59' 31''$ (RT)
 $D = 95^\circ 29' 35''$
 $R = 60.00'$
 $T = 9.50'$
 $L = 18.84'$
 $E = 0.75'$
 P.C. STA. = 0+43.04
 P.T. STA. = 0+61.88

EXIST. CURVE BIKEPATH2
 PI STA. = 1+53.85
 $\Delta = 20^\circ 39' 50''$ (LT)
 $D = 28^\circ 38' 52''$
 $R = 200.00'$
 $T = 36.46'$
 $L = 72.13'$
 $E = 3.30'$
 P.C. STA. = 1+17.39
 P.T. STA. = 1+89.52

EXIST. CURVE BIKEPATH3
 PI STA. = 2+57.94
 $\Delta = 5^\circ 35' 09''$ (RT)
 $D = 27^\circ 17' 01''$
 $R = 210.00'$
 $T = 10.24'$
 $L = 20.47'$
 $E = 0.25'$
 P.C. STA. = 2+47.69
 P.T. STA. = 2+68.17

EXIST. CURVE BIKEPATH4
 PI STA. = 4+35.99
 $\Delta = 85^\circ 41' 21''$ (RT)
 $D = 286^\circ 28' 44''$
 $R = 20.00'$
 $T = 18.55'$
 $L = 29.91'$
 $E = 7.28'$
 P.C. STA. = 4+17.45
 P.T. STA. = 4+47.36



FILE NAME =	USER NAME = steffenk	DESIGNED -	REVISED -
pw:\IL\084EBIDINTEG\illinois.gov\PI\DOT\Documents\DOT Offices\District 7\Projects\74727\Drawings\CAD\Sheets\0774727-sht-planproj		DRAWN -	REVISED -
Default	PLOT SCALE = 40.0000' / in.	CHECKED -	REVISED -
	PLOT DATE = 8/13/2015	DATE -	REVISED -

STATE OF ILLINOIS
 DEPARTMENT OF TRANSPORTATION

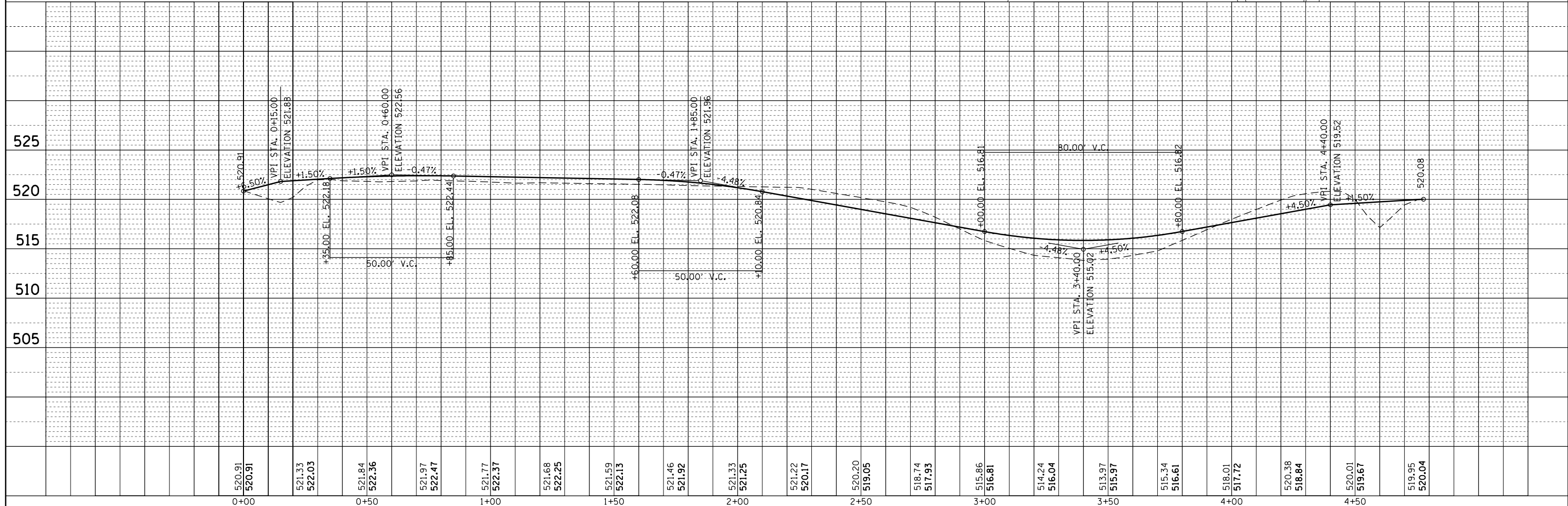
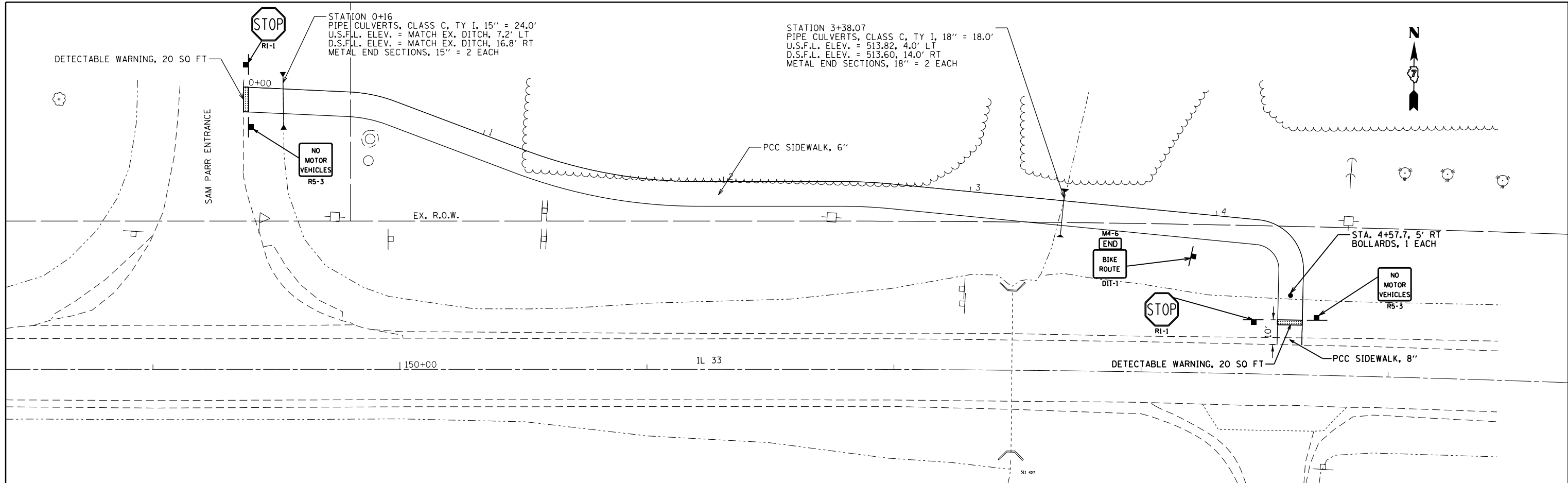
HORIZONTAL CURVE DATA

SCALE: 1" = 20' SHEET 1 OF 1 SHEETS STA. 0+00 TO STA. 4+77.70

F.A.P. R.E.	SECTION	COUNTY	TOTAL SHEETS	SHEET NO.
781	4M	JASPER	15	6
CONTRACT NO. 74727				
ILLINOIS FED. AID PROJECT				

PLAN	SURVEYED	BY	DATE
	PLOTTED		
	NOTE BOOK		
	NO.		
	CHECKED		
	CARD FILE NAME		

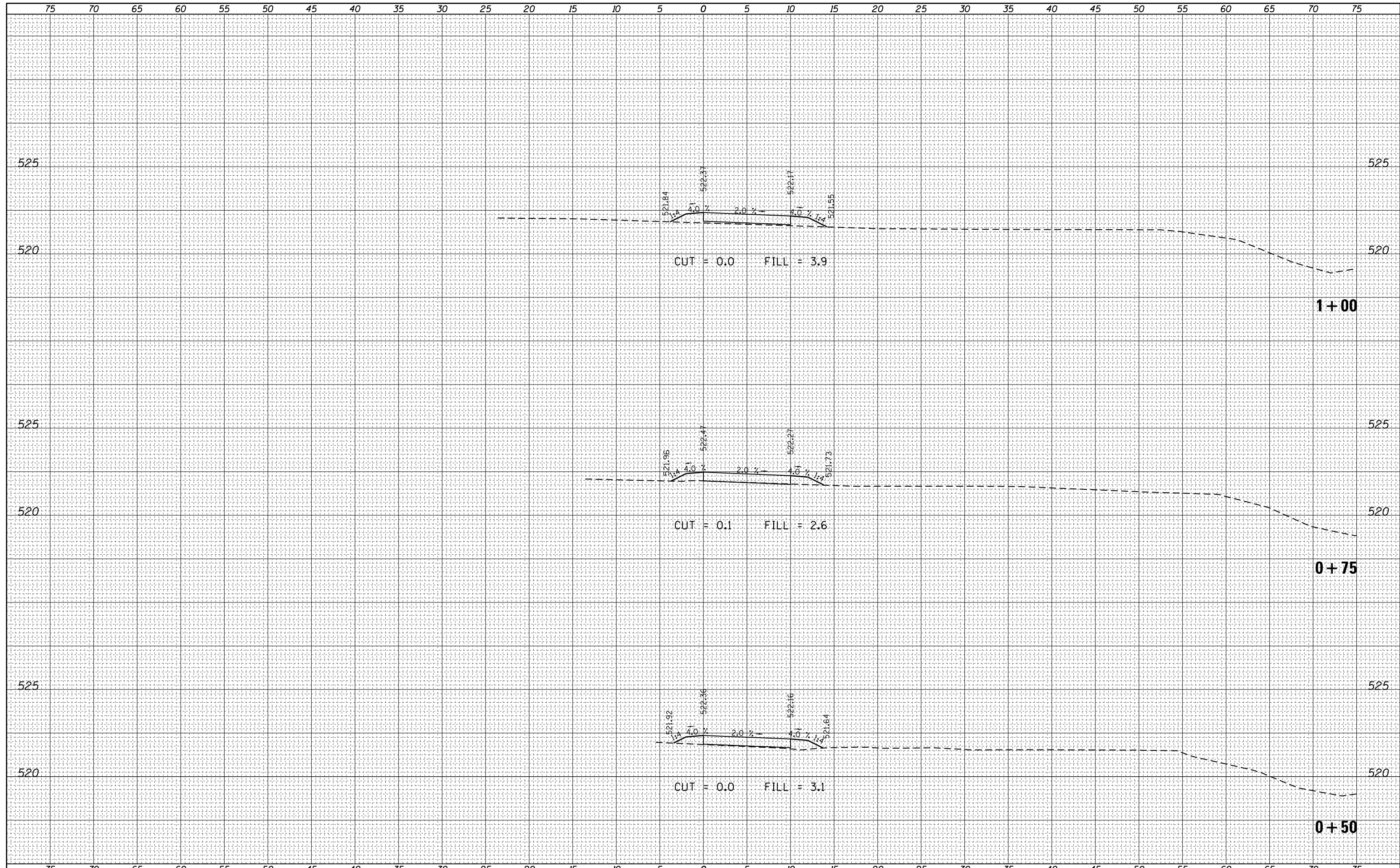
PROFILE	SURVEYED	BY	DATE
	PLOTTED		
	GRADES CHECKED		
	NO.		
	STRUCTURE		
	NOTATIONS CHECKED		



FILE NAME =	USER NAME = steffennk	DESIGNED -	REVISED -	STATE OF ILLINOIS DEPARTMENT OF TRANSPORTATION	PLAN AND PROFILE SCALE: 1" = 20' SHEET 1 OF 1 SHEETS STA. 0+00 TO STA. 4+77.00	F.A. RTE.	SECTION	COUNTY	TOTAL SHEETS	SHEET NO.	
Default	PLOT SCALE = 40.0000' / in.	CHECKED -	REVISED -			781	4M	JASPER	15	7	
	PLOT DATE = 8/13/2015	DATE -	REVISED -			CONTRACT NO. 74727					
						ILLINOIS FED. AID PROJECT					

DATE	
BY	
FINAL SURVEY NO.	
SURVEYED PLOTTED	
NOTE BOOK AREAS CHECKED	
TEMPLATE AREAS CHECKED	

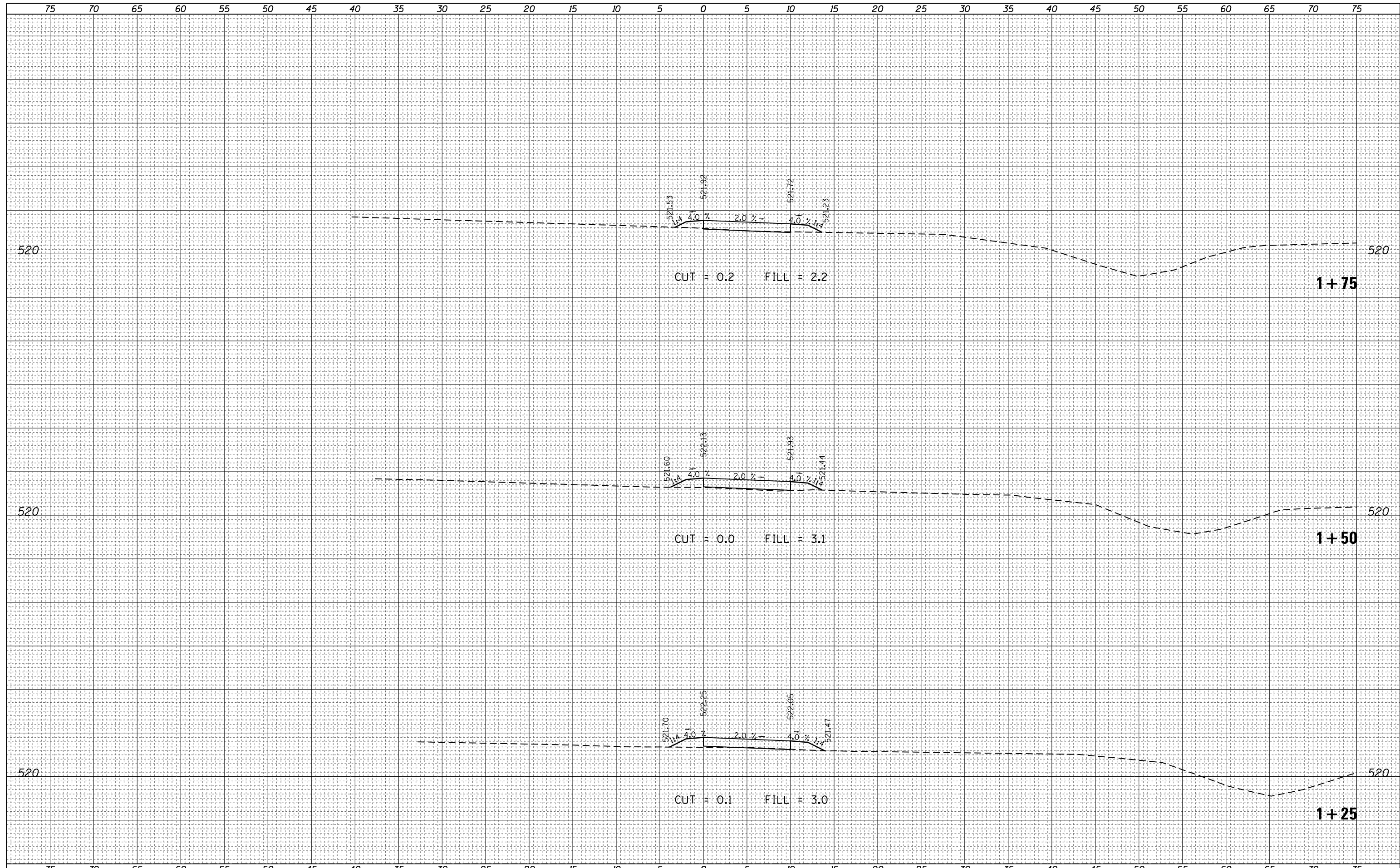
DATE	
BY	
ORIGINAL SURVEY NO.	
SURVEYED PLOTTED	
NOTE BOOK AREAS CHECKED	
TEMPLATE AREAS CHECKED	



FILE NAME =	USER NAME = steffenk	DESIGNED -	REVISIED -	STATE OF ILLINOIS DEPARTMENT OF TRANSPORTATION	CROSS SECTIONS			F.A.P. RTE.	SECTION	COUNTY	TOTAL SHEETS	SHEET NO.
p:\11084EBIDINTEG.illinois.gov\PIDOT\Documents\IDOT Offices\District 7\Projects\74727\CADD\Drawings\Drawings\74727-sht-xsec-bikepath.dwg		CHECKED -	REVISIED -		781	4M	JASPER	15	9			
PLOT SCALE = 10.0000' / in.		DATE -	REVISIED -		SCALE: 1" = 10'			SHEET 2 OF 8 SHEETS		STA. 0+50 TO STA. 1+00	CONTRACT NO. 74727	
Default					ILLINOIS FED. AID PROJECT							

DATE	
BY	
FINAL SURVEY NO.	
SURVEYED PLOTTED	
NOTE BOOK AREAS CHECKED	
TEMPLATE AREAS CHECKED	

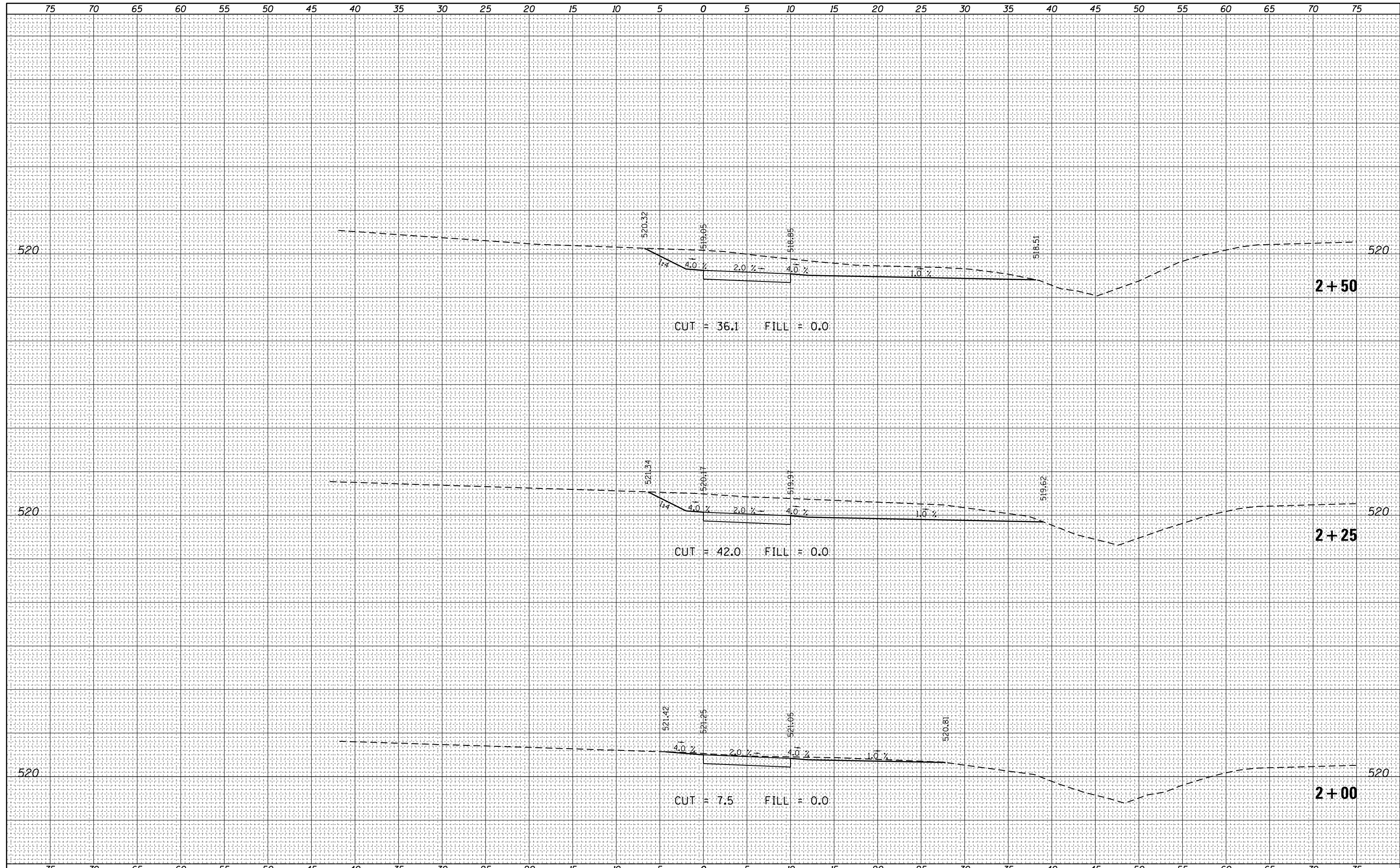
DATE	
BY	
ORIGINAL SURVEY NO.	
SURVEYED PLOTTED	
NOTE BOOK AREAS CHECKED	
TEMPLATE AREAS CHECKED	



FILE NAME =	USER NAME = steffenk	DESIGNED -	REVISIED -	STATE OF ILLINOIS DEPARTMENT OF TRANSPORTATION	CROSS SECTIONS			F.A.P. RTE.	SECTION	COUNTY	TOTAL SHEETS	SHEET NO.
p:\11084EBIDINTEG.illinois.gov\PIDOT\Documents\IDOT Offices\District 7\Projects\74727\CADD\Drawings\Drawings\74727-sht-xsec-bikepath.dwg		CHECKED -	REVISIED -		781	4M	JASPER	15	10			
PLOT SCALE = 10.0000' / in.		DATE -	REVISIED -		SCALE: 1" = 10'	SHEET 3	OF 8 SHEETS	STA. 1+25	TO STA. 1+75	CONTRACT NO. 74727		
Default										ILLINOIS FED. AID PROJECT		

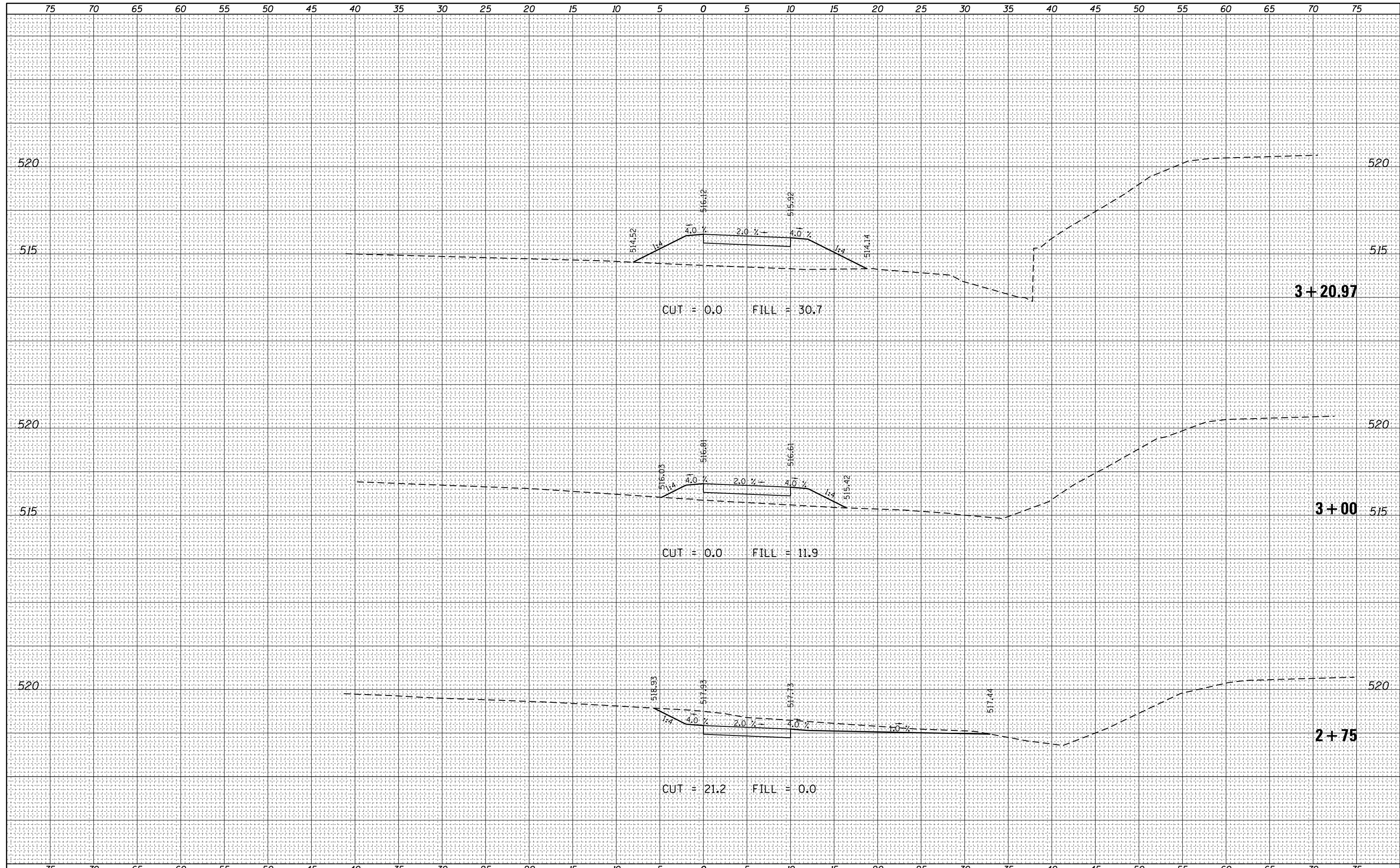
DATE	
BY	
FINAL SURVEY	SURVEYED
NOTE BOOK	PLOTTED
NO.	TEMPLATE
	AREAS
	CHECKED

DATE	
BY	
ORIGINAL SURVEY	SURVEYED
NOTE BOOK	PLOTTED
NO.	TEMPLATE
	AREAS
	CHECKED



DATE	
BY	
FINAL SURVEY	SURVEYED
NOTE BOOK	PLOTTED
NO.	TEMPLATE
	AREAS
	CHECKED

DATE	
BY	
ORIGINAL SURVEY	SURVEYED
NOTE BOOK	PLOTTED
NO.	TEMPLATE
	AREAS
	CHECKED

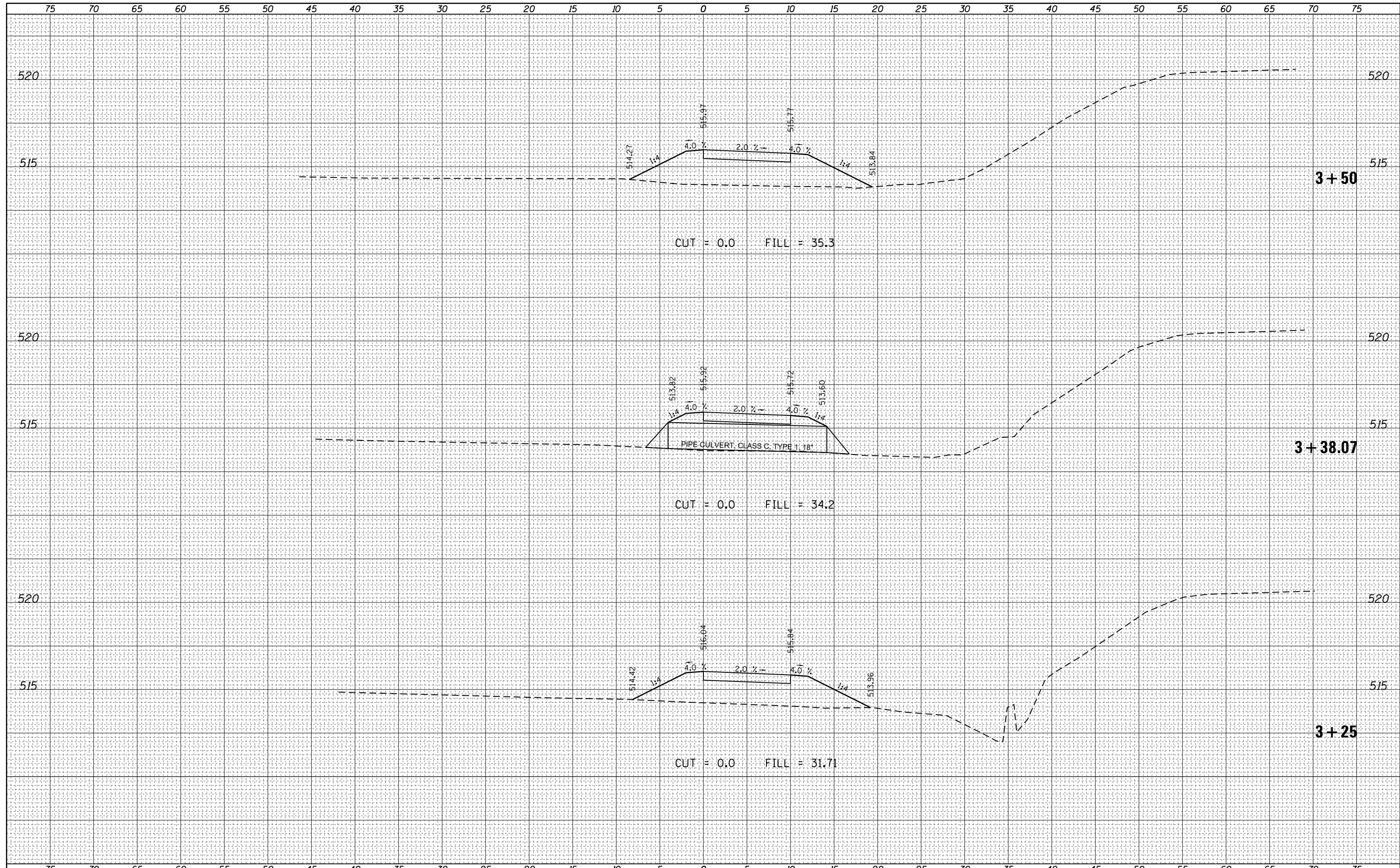


**STATE OF ILLINOIS
DEPARTMENT OF TRANSPORTATION**

CROSS SECTIONS

DATE	
BY	
FINAL SURVEY	SURVEYED
NOTE BOOK	PLOTTED
NO.	TEMPLATE
	AREAS CHECKED
	AREAS CHECKED

DATE	
BY	
ORIGINAL SURVEY	SURVEYED
NOTE BOOK	PLOTTED
NO.	TEMPLATE
	AREAS CHECKED
	AREAS CHECKED



DATE	
BY	
SURVEYED	
PLOTTED	
TEMPLATE	
AREAS	
CHECKED	
FINAL SURVEY	
NOTE BOOK	
NO.	

DATE	
BY	
SURVEYED	
PLOTTED	
TEMPLATE	
AREAS	
CHECKED	
ORIGINAL SURVEY	
NOTE BOOK	
NO.	

