

M:\SOUTH BLVD OakPark TCSP 13-227\DESIGN\CIVIL\GOOD Sheets\IMPORTED FILES FROM PROJECTWISE\015227-wht-500.dgn
 SCD 6

SI	CODE NO.	ITEM	UNIT	TOTAL QUANTITY	CONSTRUCTION CODES					
					FEDERAL TCSP 80/20			NON-PARTICIPATORY		
					(0004) ROADWAY	(0021) SAFETY	(0031) LANDSCAPING	(0004) ROADWAY	(0043) SEWER WATER MAIN	
	72400710	RELOCATE SIGN PANEL - TYPE 1	SQ FT	9		7		2		
	73100100	BASE FOR TELESCOPING STEEL SIGN SUPPORT	EACH	5		5				
	• 78001100	PAINT PAVEMENT MARKING - LETTERS AND SYMBOLS	SQ FT	50		50				
	• 78001110	PAINT PAVEMENT MARKING - LINE 4"	FOOT	585		585				
	• 78001130	PAINT PAVEMENT MARKING - LINE 6"	FOOT	134		134				
	• 78000650	THERMOPLASTIC PAVEMENT MARKING - LINE 24"	FOOT	102		102				
	• 78008200	POLYUREA PAVEMENT MARKING TYPE I - LETTERS AND SYMBOLS	SQ FT	5		5				
	• 78008210	POLYUREA PAVEMENT MARKING TYPE I - LINE 4"	FOOT	258		258				
	• 78008250	POLYUREA PAVEMENT MARKING TYPE I - LINE 12"	FOOT	55		55				
	• 78008270	POLYUREA PAVEMENT MARKING TYPE I - LINE 24"	FOOT	102		102				
	• 80400100	ELECTRIC SERVICE INSTALLATION	EACH	1		1				
	• 80400200	ELECTRIC UTILITY SERVICE CONNECTION	LSUM	1		1				
	• 81028200	UNDERGROUND CONDUIT, GALVANIZED STEEL, 2" DIA.	FOOT	27		27				
	• 81028210	UNDERGROUND CONDUIT, GALVANIZED STEEL, 2 1/2" DIA.	FOOT	39		39				
	• 81028240	UNDERGROUND CONDUIT, GALVANIZED STEEL, 4" DIA.	FOOT	36		36				

• SPECIALTY ITEM



USER NAME = BernardB	DESIGNED - BCB	REVISED - 1 10/8/2015
PLOT SCALE = 50.0000' / in.	DRAWN - BCB	REVISED -
PLOT DATE = 10/8/2015	CHECKED - DPA	REVISED -
	DATE - 10/8/2015	REVISED -

STATE OF ILLINOIS
DEPARTMENT OF TRANSPORTATION

VILLAGE OF OAK PARK - SOUTH BOULEVARD IMPROVEMENTS
SUMMARY OF QUANTITIES

SCALE: 1"=50' SHEET 6 OF 16 SHEETS STA. TO STA.

F.A. RTE.	SECTION	COUNTY	TOTAL SHEETS	SHEET NO.
	13-00256-00-PV	COOK	107	9
CONTRACT NO. 61B99				
ILLINOIS FED. AID PROJECT				

K:\SOUTH BLVD OakPark TCSP (13-227)\DESIGN\CIVIL\LOAD Sheets\IMPORTED FILES FROM PROJECT\ISE 0116227-ht-500.dgn
500 7

SI	CODE NO.	ITEM	UNIT	TOTAL QUANTITY	CONSTRUCTION CODES				
					FEDERAL TCSP 80/20			NON-PARTICIPATORY	
					(0004) ROADWAY	(0021) SAFETY	(0031) LANDSCAPING	(0004) ROADWAY	(0043) SEWER WATER MAIN
•	81028260	UNDERGROUND CONDUIT, GALVANIZED STEEL, 6" DIA.	FOOT	8		8			
•	81100905	CONDUIT ATTACHED TO STRUCTURE, 3 1/2" DIA., PVC COATED GALVANIZED STEEL	FOOT	30		30			
•	81400100	HANDHOLE	EACH	4		4			
•	81400300	DOUBLE HANDHOLE	EACH	1		1			
•	81603035	UNIT DUCT, 600V, 2-1C NO.6, 1/C NO.6 GROUND, (XLP-TYPE USE), 1" DIA. POLYETHYLENE	FOOT	329		329			
•	81603051	UNIT DUCT, 600V, 3-1C NO.6, 1/C NO.8 GROUND, (XLP-TYPE USE), 1 1/4" DIA. POLYETHYLENE	FOOT	777		777			
•	81603100	UNIT DUCT, 600V, 4-1C NO.6, 1/C NO.6 GROUND, (XLP-TYPE USE), 1 1/4" DIA. POLYETHYLENE	FOOT	915		915			
•	82500350	LIGHTING CONTROLLER, BASE MOUNTED, 240VOLT, 100AMP	EACH	1		1			
•	83600200	LIGHT POLE FOUNDATION, 24" DIAMETER	FOOT	102		102			
•	84200600	REMOVAL OF LIGHTING UNIT, NO SALVAGE	EACH	10		10			
•	84200804	REMOVAL OF POLE FOUNDATION	EACH	10		10			
•	85000300	MAINTENANCE OF EXISTING TRAFFIC SIGNAL INSTALLATION	L SUM	1		1			
•	86300200	CONTROLLER CABINET TYPE II	EACH	1		1			
•	87301215	ELECTRIC CABLE IN CONDUIT, SIGNAL NO. 14 2C	FOOT	524		524			

• SPECIALTY ITEM



USER NAME = BernardB	DESIGNED - BCB	REVISED - 10/8/2015
PLOT SCALE = 50.0000' / in.	DRAWN - BCB	REVISED -
PLOT DATE = 10/8/2015	CHECKED - DPA	REVISED -
	DATE - 10/8/2015	REVISED -

STATE OF ILLINOIS
DEPARTMENT OF TRANSPORTATION

VILLAGE OF OAK PARK - SOUTH BOULEVARD IMPROVEMENTS
SUMMARY OF QUANTITIES

SCALE: 1"=50' SHEET 7 OF 16 SHEETS STA. TO STA.

F.A. RTE.	SECTION	COUNTY	TOTAL SHEETS	SHEET NO.
	13-00256-00-PV	COOK	107	10
CONTRACT NO. 61B99			ILLINOIS FED. AID PROJECT	

SI	CODE NO.	ITEM	UNIT	TOTAL QUANTITY	CONSTRUCTION CODES				
					FEDERAL TCSP 80/20			NON-PARTICIPATORY	
					(0004) ROADWAY	(0021) SAFETY	(0031) LANDSCAPING	(0004) ROADWAY	(0043) SEWER WATER MAIN
•	89000100	TEMPORARY TRAFFIC SIGNAL INSTALLATION	EACH	1		1			
•	89500200	RELOCATE EXISTING PEDESTRIAN SIGNAL HEAD	EACH	1		1			
•	89501400	RELOCATE EXISTING EMERGENCY VEHICLE PRIORITY SYSTEM, DETECTOR UNIT	EACH	1		1			
⚠	89502210	MODIFY EXISTING CONTROLLER CABINET	EACH	1		1			
•	89502300	REMOVE ELECTRIC CABLE FROM CONDUIT	FOOT	912		912			
•	89502350	REMOVE AND REINSTALL ELECTRIC CABLE FROM CONDUIT	FOOT	6,137		6,137			
•	89502375	REMOVE EXISTING TRAFFIC SIGNAL EQUIPMENT	EACH	1		1			
•	89502382	REMOVE EXISTING DOUBLE HANDHOLE	EACH	1		1			
•	89502385	REMOVE EXISTING CONCRETE FOUNDATION	EACH	2		2			
+	A2004824	TREE, GLEDITSIA TRIACANTHOS INERMIS SKYLINE (SKYLINE THORNLESS COMMON HONEYLOCUST), 3" CALIPER, BALLED AND BURLAPPED	EACH	6			6		
+	A2005024	TREE, GYMNOCLADUS DIOICUS (KENTUCKY COFFEETREE), 3" CALIPER, BALLED AND BURLAPPED	EACH	2			2		
+	A2007632	TREE, TAXODIUM DISTICHUM (COMMON BALD CYPRESS), 4" CALIPER, BALLED AND BURLAPPED	EACH	4			4		
+	A2008453	TREE, ULMUS ACCOLADE (HYBRID ELM), 3" CALIPER, BALLED AND BURLAPPED	EACH	1			1		
+	A2008748	TREE, ULMUS X FRONTIER (FRONTIER ELM), 3" CALIPER, BALLED AND BURLAPPED, MATCHING HEADS	EACH	6			6		
+	C2C01024	SHRUB, BUXUS MICROPHYLLA WINTERGREEN (WINTERGREEN LITTLELEAF BOXWOOD), 2' HEIGHT, CONTAINER	EACH	9			9		

• SPECIALTY ITEM

N:\SOUTH BLVD OakPark TCSP 13-227\DESIGN\CIVIL\CADD Sheets\IMPORTED FILES FROM PROJECT\ISE 018527-ht-500.dgn



USER NAME = BernardB	DESIGNED - BCB	REVISED - ⚠ 10/8/2015
PLOT SCALE = 50.0000' / in.	DRAWN - BCB	REVISED -
PLOT DATE = 10/8/2015	CHECKED - DPA	REVISED -
	DATE - 10/8/2015	REVISED -

STATE OF ILLINOIS
DEPARTMENT OF TRANSPORTATION

VILLAGE OF OAK PARK - SOUTH BOULEVARD IMPROVEMENTS
SUMMARY OF QUANTITIES

SCALE: 1"=50' SHEET 9 OF 16 SHEETS STA. TO STA.

F.A. RTE.	SECTION	COUNTY	TOTAL SHEETS	SHEET NO.
	13-00256-00-PV	COOK	107	12
CONTRACT NO. 61B99			ILLINOIS FED. AID PROJECT	

M:\SOUTH BLVD OakPark TCSP (13-227)\DESIGN\CIVIL\LOAD Sheets\IMPORTED FILES FROM PROJECTWISE\015227-ah1-S00.dgn

SI	CODE NO.	ITEM	UNIT	TOTAL QUANTITY	CONSTRUCTION CODES					
					FEDERAL TCSP 80/20			NON-PARTICIPATORY		
					(0004) ROADWAY	(0021) SAFETY	(0031) LANDSCAPING	(0004) ROADWAY	(0043) SEWER WATER MAIN	
*	K0012970	PERENNIAL PLANTS, BULB TYPE	UNIT	1			1			
*	K0012980	PERENNIAL PLANTS, ORNAMENTAL TYPE, QUART POT	UNIT	1			1			
*	K0012990	PERENNIAL PLANTS, ORNAMENTAL TYPE, GALLON POT	UNIT	1			1			
*	K1001988	IRRIGATION SYSTEM SPECIAL	L SUM	1			1			
*	X0300635	PLANTER	EACH	8			8			
*	X0320374	PLUG EXISTING SANITARY SEWERS	EACH	4					4	
	X0323389	STORM SEWER CONNECTION	EACH	2					2	
*	X0323524	REMOVE EXISTING SURVEILLANCE CAMERA EQUIPMENT	EACH	1				1		
	X0324058	OUTLET SPECIAL	EACH	19		19				
*	X0324085	EMERGENCY VEHICLE PRIORITY SYSTEM LINE SENSOR CABLE, NO. 20 3/C	FOOT	145		145				
*	X0324599	ROD AND CLEAN EXISTING CONDUIT	FOOT	125		125				
*	X0324788	GRANITE PAVERS	SQ FT	349			349			
*	X0325014	WATER SERVICE INSTALLATION 2"	EACH	2			1			1
*	X0325072	MODIFY EXISTING CONTROLLER CABINET TYPE A	EACH	1						

* SPECIALTY ITEM



USER NAME = BernardB	DESIGNED - BCB	REVISED - 10/8/2015
PLOT SCALE = 50.0000' / in.	DRAWN - BCB	REVISED -
PLOT DATE = 10/8/2015	CHECKED - DPA	REVISED -
	DATE - 10/8/2015	REVISED -

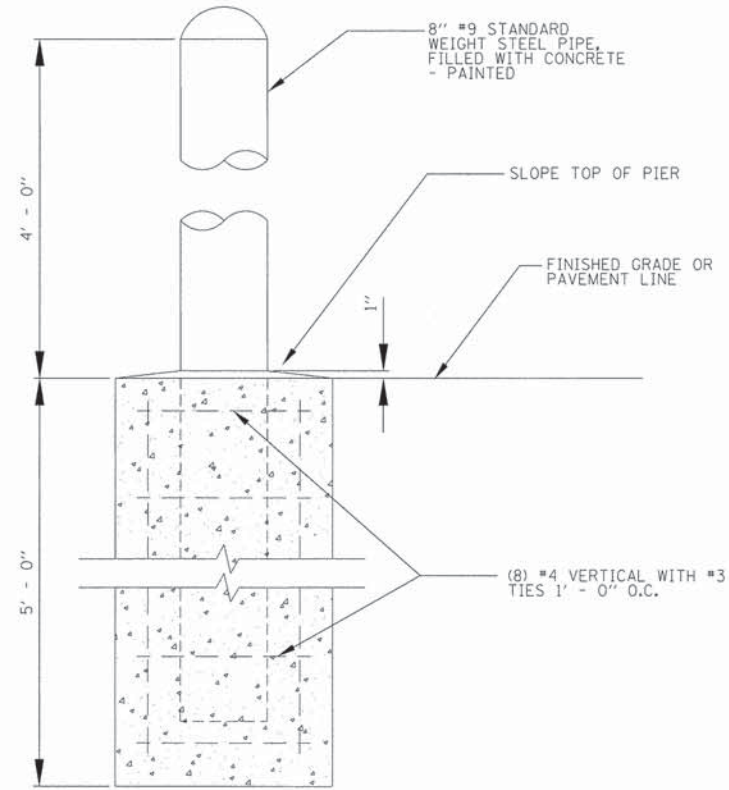
STATE OF ILLINOIS
DEPARTMENT OF TRANSPORTATION

VILLAGE OF OAK PARK - SOUTH BOULEVARD IMPROVEMENTS
SUMMARY OF QUANTITIES

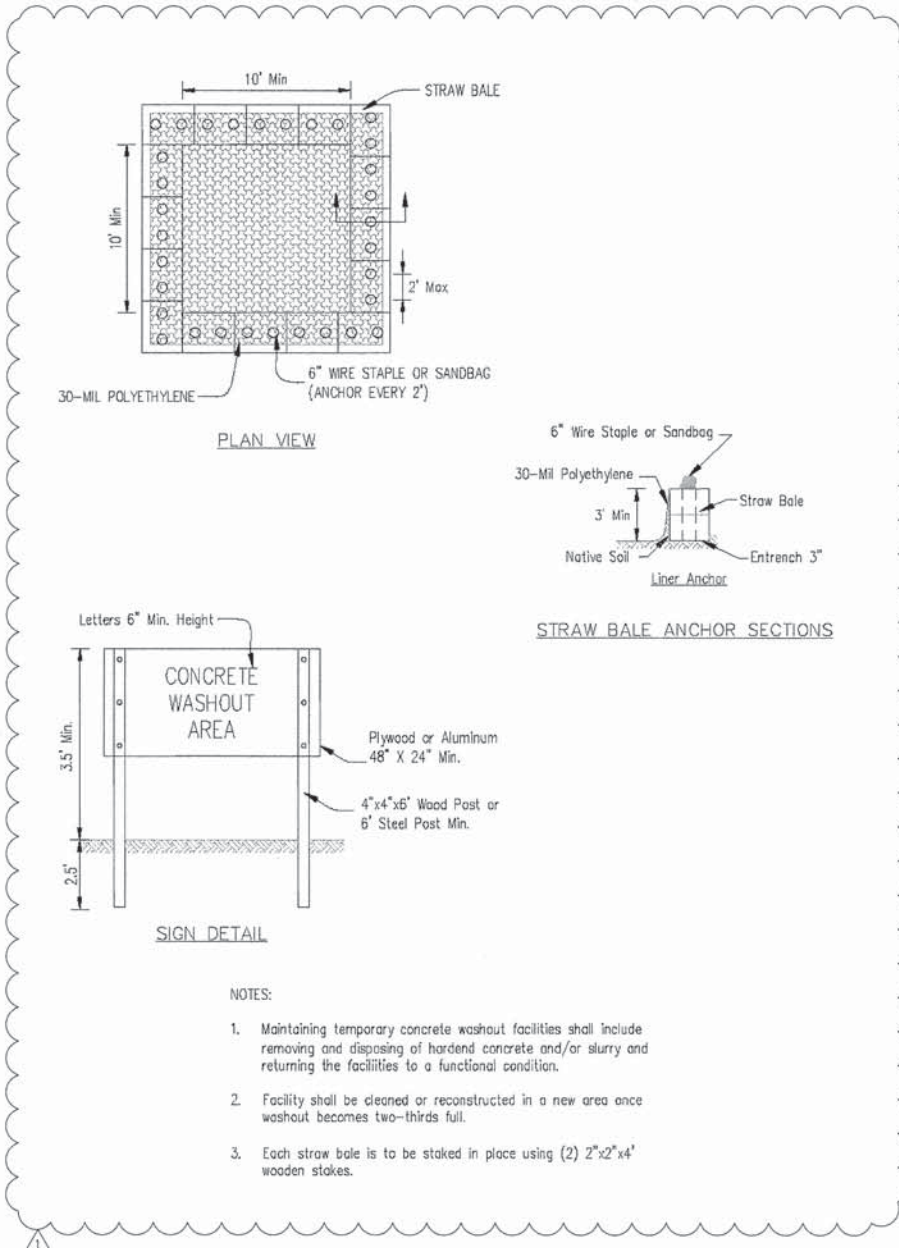
SCALE: 1"=50' SHEET 10 OF 16 SHEETS STA. TO STA.

F.A. RTE.	SECTION	COUNTY	TOTAL SHEETS	SHEET NO.
	13-00256-00-PV	COOK	107	13
CONTRACT NO. 61B99				
[ILLINOIS] FED. AID PROJECT				

H:\SOUTH BLVD OakPark.TCP 03-2271\DESIGN\CIVIL\CADD Sheets\IMPORTED FILES FROM PROJECTWISE\0115227-akt-de-va1315.dgn
 Default



BOLLARD DETAIL
NTS

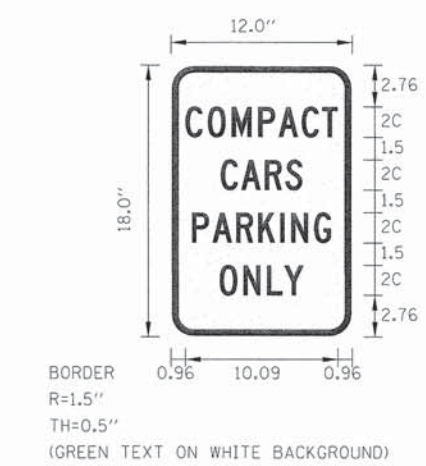


- NOTES:**
- Maintaining temporary concrete washout facilities shall include removing and disposing of hardened concrete and/or slurry and returning the facilities to a functional condition.
 - Facility shall be cleaned or reconstructed in a new area once washout becomes two-thirds full.
 - Each straw bale is to be staked in place using (2) 2"x2"x4' wooden stakes.



NOTE:
MOUNT ALUMINUM SIGN ON STANDARD CONSTRUCTION SIGN FRAME (PER IDOT STANDARD) ACCORDING TO THE LOCATION SPECIFIED ON THE PAVEMENT MARKING AND SIGNING PLAN.

PROJECT SIGN
NTS



USER NAME = BernardB	DESIGNED - BCB	REVISED - 10/8/2015
DRAWN - BCB	CHECKED - DPA	DATE - 10/14/2015
PLOT SCALE = 5.0000' / 1"		
PLOT DATE = 10/8/2015		

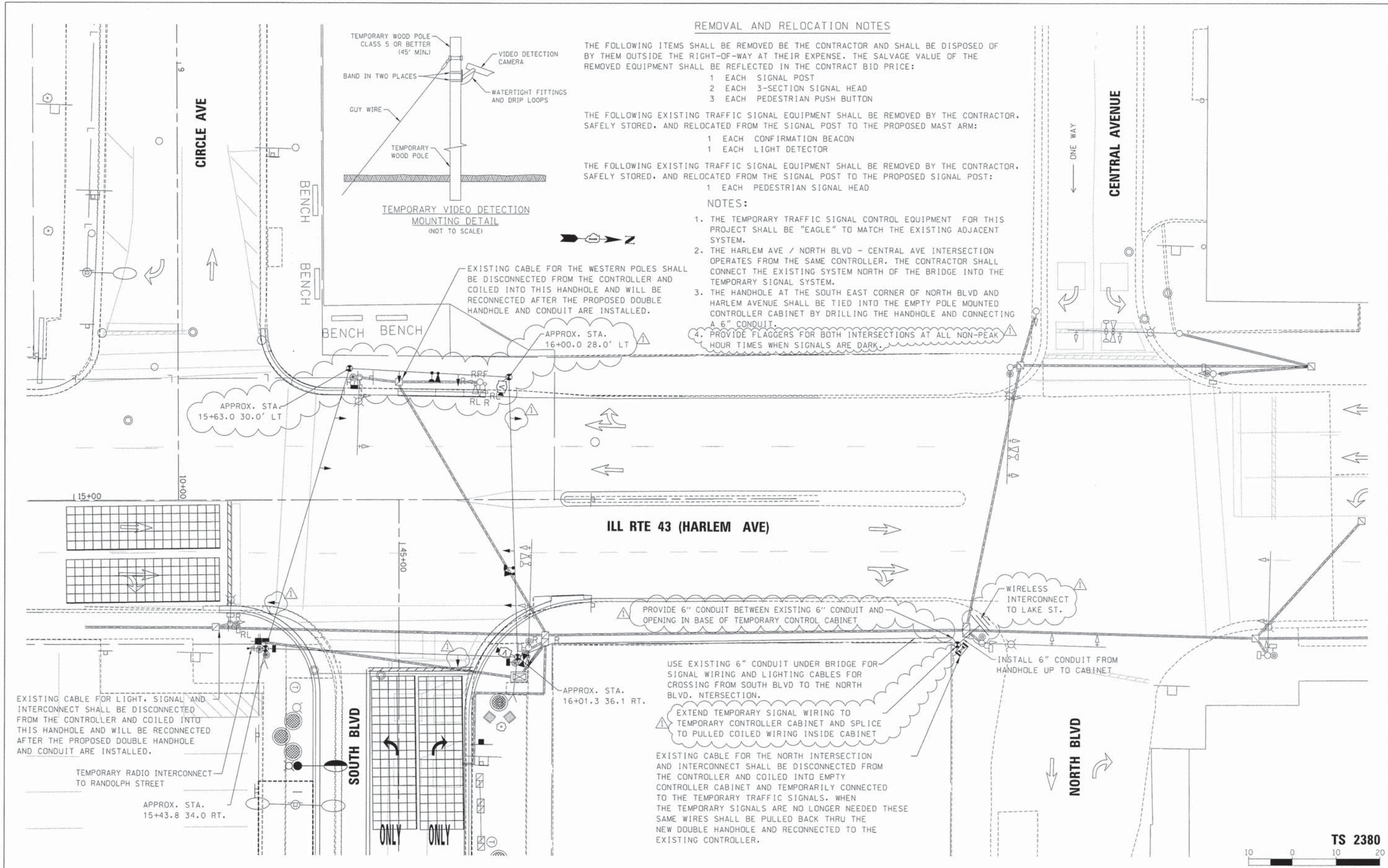
**STATE OF ILLINOIS
DEPARTMENT OF TRANSPORTATION**

**SOUTH BOULEVARD
DESIGN DETAILS**

SCALE: 1"=5' SHEET 14 OF 14 SHEETS STA. TO STA.

F.A. RTE.	SECTION	COUNTY	TOTAL SHEETS	SHEET NO.
	13-00256-00-PV	COOK	107	60
CONTRACT NO. 61B99				
ILLINOIS FED. AID PROJECT				

HA SOUTH BLVD D&P PERM TCSP (13-227) DESIGN CIVIL CAD SHEETS IMPORTED FILES FROM PROJECTWISE 015227-sht-ts1-Signal temp & removal - South of Harlem Ave
 Default



REMOVAL AND RELOCATION NOTES

THE FOLLOWING ITEMS SHALL BE REMOVED BY THE CONTRACTOR AND SHALL BE DISPOSED OF BY THEM OUTSIDE THE RIGHT-OF-WAY AT THEIR EXPENSE. THE SALVAGE VALUE OF THE REMOVED EQUIPMENT SHALL BE REFLECTED IN THE CONTRACT BID PRICE:

- 1 EACH SIGNAL POST
- 2 EACH 3-SECTION SIGNAL HEAD
- 3 EACH PEDESTRIAN PUSH BUTTON

THE FOLLOWING EXISTING TRAFFIC SIGNAL EQUIPMENT SHALL BE REMOVED BY THE CONTRACTOR, SAFELY STORED, AND RELOCATED FROM THE SIGNAL POST TO THE PROPOSED MAST ARM:

- 1 EACH CONFIRMATION BEACON
- 1 EACH LIGHT DETECTOR

THE FOLLOWING EXISTING TRAFFIC SIGNAL EQUIPMENT SHALL BE REMOVED BY THE CONTRACTOR, SAFELY STORED, AND RELOCATED FROM THE SIGNAL POST TO THE PROPOSED SIGNAL POST:

- 1 EACH PEDESTRIAN SIGNAL HEAD

NOTES:

1. THE TEMPORARY TRAFFIC SIGNAL CONTROL EQUIPMENT FOR THIS PROJECT SHALL BE "EAGLE" TO MATCH THE EXISTING ADJACENT SYSTEM.
2. THE HARLEM AVE / NORTH BLVD - CENTRAL AVE INTERSECTION OPERATES FROM THE SAME CONTROLLER. THE CONTRACTOR SHALL CONNECT THE EXISTING SYSTEM NORTH OF THE BRIDGE INTO THE TEMPORARY SIGNAL SYSTEM.
3. THE HANDHOLE AT THE SOUTH EAST CORNER OF NORTH BLVD AND HARLEM AVENUE SHALL BE TIED INTO THE EMPTY POLE MOUNTED CONTROLLER CABINET BY DRILLING THE HANDHOLE AND CONNECTING A 6" CONDUIT.
4. PROVIDE FLAGGERS FOR BOTH INTERSECTIONS AT ALL NON-PEAK HOUR TIMES WHEN SIGNALS ARE DARK.

ILL RTE 43 (HARLEM AVE)

TS 2380



	USER NAME = BernardB	DESIGNED = MCH	REVISED = 10/8/2015
	PLOT SCALE = 1/8" = 1' / in.	DRAWN = GR	REVISED =
	PLOT DATE = 10/8/2015	CHECKED = MCH	REVISED =
		DATE = 10/8/2015	REVISED =

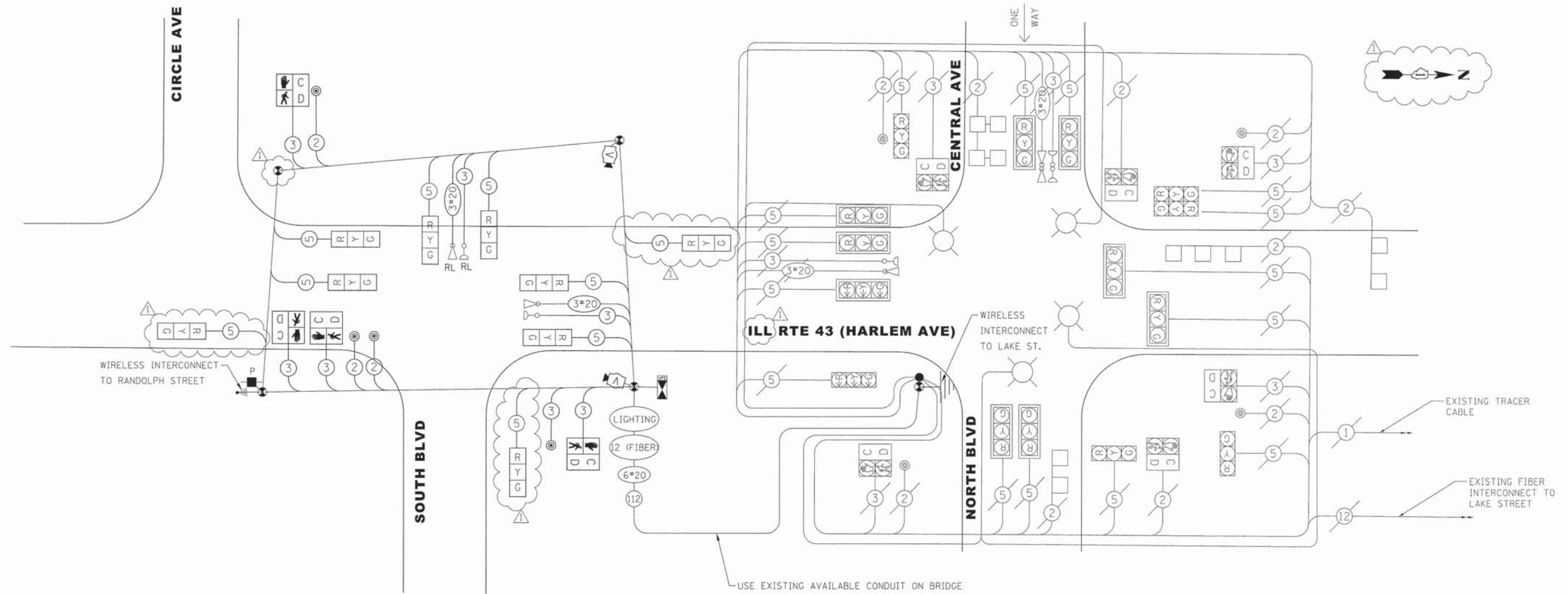
**STATE OF ILLINOIS
DEPARTMENT OF TRANSPORTATION**

**HARLEM AVENUE / SOUTH BOULEVARD
TEMPORARY TRAFFIC SIGNAL INSTALLATION AND REMOVAL PLAN**

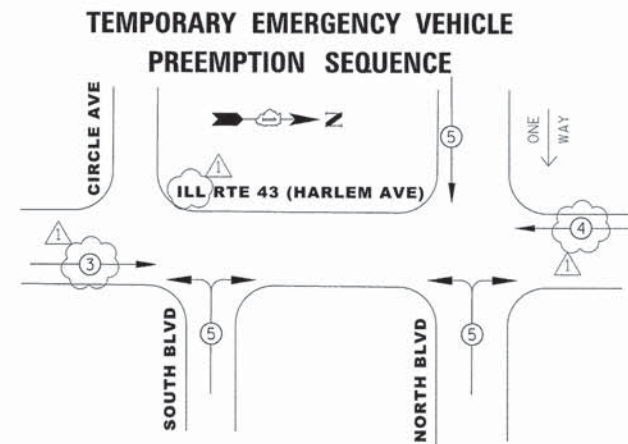
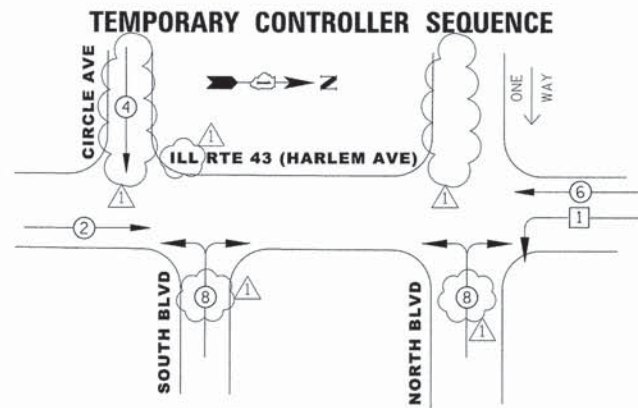
F.A. RTE.	SECTION	COUNTY	TOTAL SHEETS	SHEET NO.
	13-00256-00-PV	COOK	107	79
CONTRACT NO. 61B99			ILLINOIS FED. AID PROJECT	

SCALE: 1"=20' SHEET 1 OF 6 SHEETS STA. TO STA.

HA/SOUTH BLVD Data/A-TSIP-13-227/DESIGN/CIVIL/CADD Sheets/IMPORTED FILES FROM PROJECT/ISEND/15227-ahv-s2-Signal-temp cable plan South at Harlem.dgn
 Default



TEMPORARY CABLE PLAN



LEGEND

- ◻ DUAL ENTRY PHASE
- ◻ SINGLE ENTRY PHASE
- ◻ OVERLAP
- NUMBER REFERS TO ASSOCIATED PHASE
- ◻ PEDESTRIAN PHASE

I.D.O.T TRAFFIC SIGNAL INSTALLATION ELECTRICAL SERVICE REQUIREMENTS				
TYPE	NO. LAMPS	WATTAGE [INCAND.]	%OPERATION	TOTAL WATTAGE
SIGNAL (RED)	21	17	0.50	178.50
(YELLOW)	21	25	0.25	131.25
(GREEN)	21	15	0.25	78.75
ARROW	0	12	0.10	0.00
PED. SIGNAL	10	25	1.00	250.00
CONTROLLER	1	100	1.00	100.00
UPS	1	25	1.00	25.00
ILLUM. SIGN		25	0.05	
FLASHER		0.50		
VIDEO SYSTEM	1	150	1.00	150.00
ENERGY COSTS TO:				TOTAL =
ILLINOIS DEPARTMENT OF TRANSPORTATION 201 WEST CENTER COURT SCHAUMBURG, IL 60196-1096				896.50

ENERGY SUPPLY CONTACT: DAN SCHACHT
 PHONE: (630) 437-2137
 COMPANY: COMMONWEALTH EDISON

TERRA ENGINEERING LTD.
 USER NAME = BernardB
 DESIGNED - MCH
 DRAWN - GR
 CHECKED - MCH
 DATE - 10/8/2015
 REVISIONS:
 10/8/2015
 10/8/2015
 10/8/2015

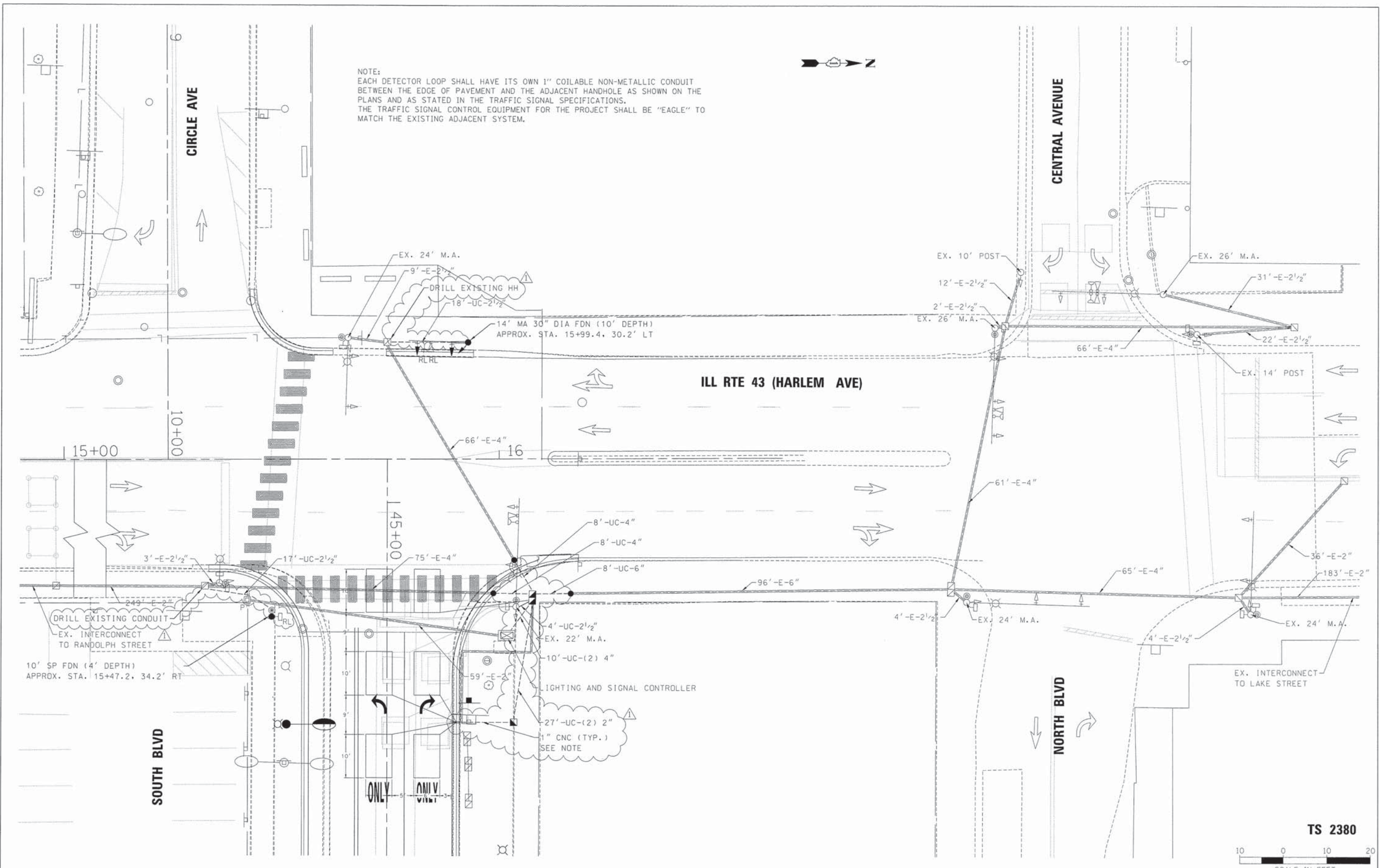
**STATE OF ILLINOIS
 DEPARTMENT OF TRANSPORTATION**

**HARLEM AVENUE /SOUTH BOULEVARD
 TEMPORARY TRAFFIC SIGNAL CABLE PLAN**
 SCALE: 1"=20'
 SHEET 2 OF 6 SHEETS STA. TO STA.

F.A. RTE.	SECTION	COUNTY	TOTAL SHEETS	SHEET NO.
	13-00256-00-PV	COOK	107	80
				CONTRACT NO. 61B99
ILLINOIS FED. AID PROJECT				

TS 2380

M:\SOUTH BLVD.dwg TCS 13-227\DESIGN\CIVIL\CADD Sheets\IMPORTED FILES FROM PROJECT\ISE\15227\ht-ua3-Signal-South at Harlem.dgn



NOTE:
 EACH DETECTOR LOOP SHALL HAVE ITS OWN 1" COILABLE NON-METALLIC CONDUIT BETWEEN THE EDGE OF PAVEMENT AND THE ADJACENT HANDHOLE AS SHOWN ON THE PLANS AND AS STATED IN THE TRAFFIC SIGNAL SPECIFICATIONS.
 THE TRAFFIC SIGNAL CONTROL EQUIPMENT FOR THE PROJECT SHALL BE "EAGLE" TO MATCH THE EXISTING ADJACENT SYSTEM.



TS 2380



USER NAME = BernardB
 PLOT SCALE = 10.0000' / in.
 PLOT DATE = 10/8/2015

DESIGNED - MCH
 DRAWN - GR
 CHECKED - MCH
 DATE - 10/8/2015

REVISED - 10/8/2015
 REVISED -
 REVISED -
 REVISED -

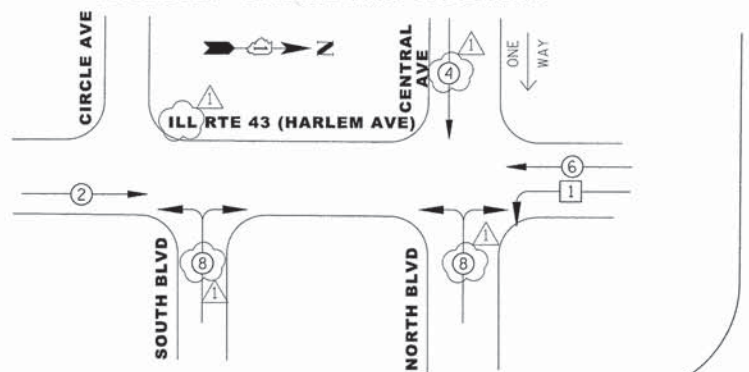
STATE OF ILLINOIS
 DEPARTMENT OF TRANSPORTATION

HARLEM AVENUE / SOUTH BOULEVARD
 PROPOSED TRAFFIC SIGNAL MODIFICATIONS

SCALE: 1"=20' SHEET 3 OF 6 SHEETS STA. TO STA.

F.A. RTE.	SECTION	COUNTY	TOTAL SHEETS	SHEET NO.
	13-00256-00-PV	COOK	107	81
CONTRACT NO. 61B99				
ILLINOIS FED. AID PROJECT				

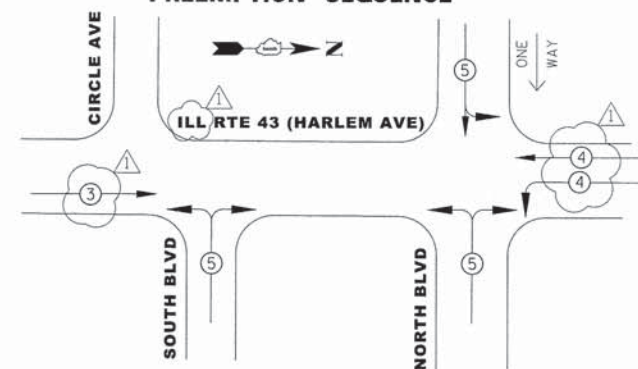
PROPOSED CONTROLLER SEQUENCE



LEGEND

- ⊕ DUAL ENTRY PHASE
- ⊖ SINGLE ENTRY PHASE
- ⊙ OVERLAP
- NUMBER REFERS TO ASSOCIATED PHASE
- ⊖ PEDESTRIAN PHASE

PROPOSED EMERGENCY VEHICLE PREEMPTION SEQUENCE



CIRCLE AVE

SOUTH BLVD

NORTH BLVD

ILL RTE 43 (HARLEM AVE)

CABLE PLAN

SCHEDULE OF QUANTITIES

ITEM DESCRIPTION	UNIT	QUANTITY	ITEM DESCRIPTION	UNIT	QUANTITY
UNDERGROUND CONDUIT, GALVANIZED STEEL, 2" DIA.	FOOT	27	HANDHOLE	EACH	1
UNDERGROUND CONDUIT, GALVANIZED STEEL, 2 1/2" DIA.	FOOT	39	TRAFFIC SIGNAL BACKPLATE, LOUVERED, FORMED PLASTIC	EACH	2
UNDERGROUND CONDUIT, GALVANIZED STEEL, 4" DIA.	FOOT	36	PREFORMED DETECTOR LOOP	FOOT	303
UNDERGROUND CONDUIT, GALVANIZED STEEL, 6" DIA.	FOOT	8	PEDESTRIAN PUSH-BUTTON	EACH	4
DOUBLE HANDHOLE	EACH	1	TEMPORARY TRAFFIC SIGNAL INSTALLATION	EACH	1
ELECTRIC CABLE IN CONDUIT, LEAD-IN, NO. 14 1 PAIR	FOOT	45	RELOCATE EXISTING EMERGENCY VEHICLE PRIORITY SYSTEM, DETECTOR UNIT	EACH	1
ELECTRIC CABLE IN CONDUIT, SIGNAL NO. 14 2C	FOOT	524	REMOVE ELECTRIC CABLE FROM CONDUIT	FOOT	912
ELECTRIC CABLE IN CONDUIT, SIGNAL NO. 14 3C	FOOT	138	REMOVE AND REINSTALL ELECTRIC CABLE FROM CONDUIT	FOOT	6137
ELECTRIC CABLE IN CONDUIT, SIGNAL NO. 14 5C	FOOT	420	REMOVE EXISTING TRAFFIC SIGNAL EQUIPMENT	EACH	1
ELECTRIC CABLE IN CONDUIT, EQUIPMENT GROUNDING CONDUCTOR, NO. 6 1C	FOOT	241	REMOVE EXISTING DOUBLE HANDHOLE	EACH	1
TRAFFIC SIGNAL POST, GALVANIZED STEEL 10 FT.	EACH	1	REMOVE EXISTING CONCRETE FOUNDATION	EACH	1
STEEL MAST ARM ASSEMBLY AND POLE, 14 FT.	EACH	1	EMERGENCY VEHICLE PRIORITY SYSTEM LINE SENSOR CABLE, NO. 20 3/C	FOOT	145
CONCRETE FOUNDATION, TYPE A	FOOT	4	TEMPORARY TRAFFIC SIGNAL TIMING	EACH	1
CONCRETE FOUNDATION, TYPE E 30-INCH DIAMETER	FOOT	10	ROD AND CLEAN EXISTING CONDUIT	FOOT	125
DRILL EXISTING HANDHOLE	EACH	2	MODIFY EXISTING CONTROLLER CABINET TYPE A	EACH	1
SIGNAL HEAD, LED, 1-FACE, 3-SECTION, MAST ARM MOUNTED	EACH	2	RE-OPTIMIZE TRAFFIC SIGNAL SYSTEM LEVEL 1	EACH	1
SIGNAL HEAD, LED, 1-FACE, 3-SECTION, BRACKET MOUNTED	EACH	1	REMOVE AND REINSTALL FIBEROPTIC CABLE FROM CONDUIT	FOOT	250
RELOCATE EXISTING PEDESTRIAN SIGNAL HEAD	EACH	1	CONTROLLER CABINET TYPE II	EACH	1

I.D.O.T. TRAFFIC SIGNAL INSTALLATION ELECTRICAL SERVICE REQUIREMENTS				TOTAL WATTAGE
TYPE	NO. LAMPS	WATTAGE INCAND.	LED %OPERATION	
SIGNAL (RED)	25	17	0.50	212.50
(YELLOW)	25	25	0.25	156.25
(GREEN)	25	15	0.25	93.75
ARROW	0	12	0.10	0.00
PED. SIGNAL	10	25	1.00	250.00
CONTROLLER	2	100	1.00	200.00
UPS	2	25	1.00	50.00
ILLUM. SIGN		25	0.05	
FLASHER			0.50	
ENERGY COSTS TO:				TOTAL = 962.50
ILLINOIS DEPARTMENT OF TRANSPORTATION 201 WEST CENTER COURT SCHAUMBURG, IL 60196-1096				
ENERGY SUPPLY CONTACT:		DAN SCHACHT (630) 437-2137 COMMONWEALTH EDISON		



USER NAME = BernardB
 DESIGNED - MCH
 DRAWN - GR
 CHECKED - MCH
 DATE - 10/21/2015

REVISIONS:
 10/8/2015
 10/21/2015

STATE OF ILLINOIS
 DEPARTMENT OF TRANSPORTATION

HARLEM AVENUE / SOUTH BOULEVARD
 PROPOSED TRAFFIC SIGNAL CABLE PLAN

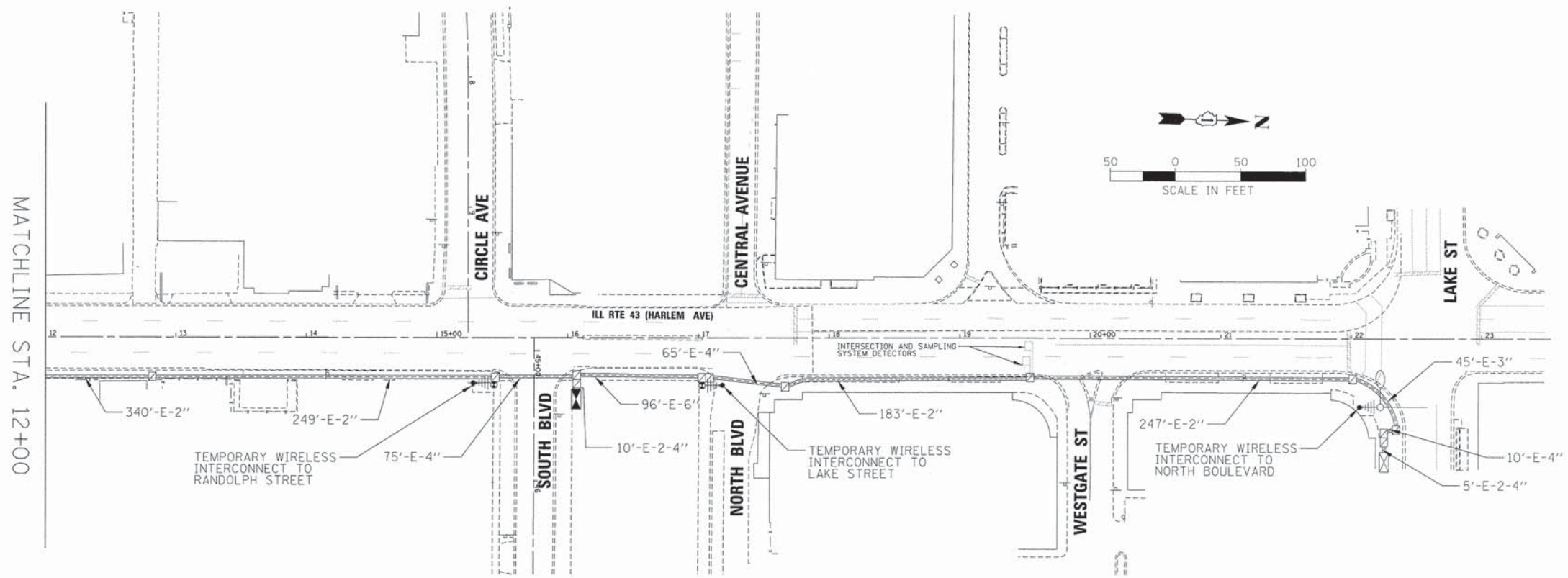
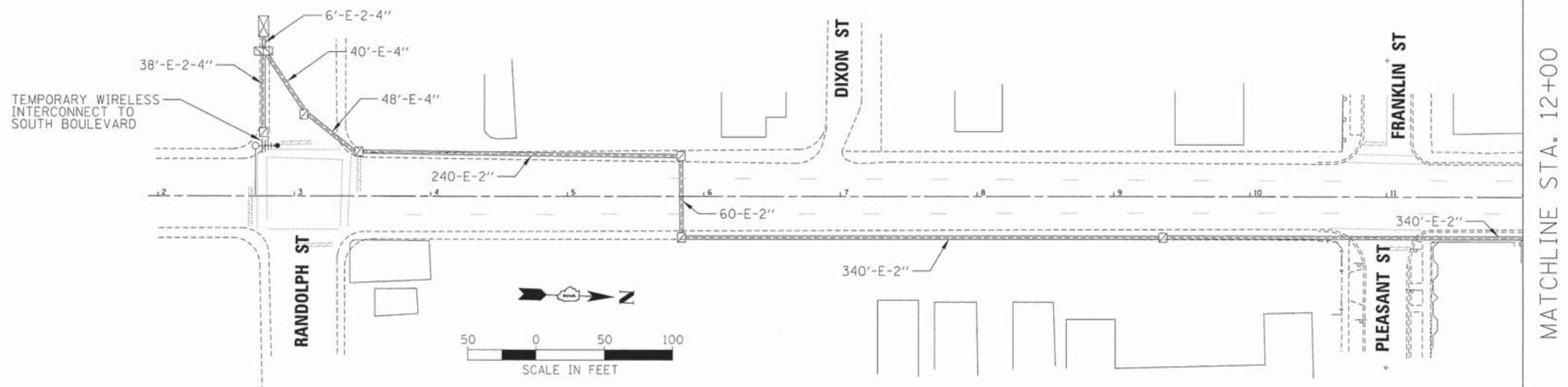
SCALE: 1"=20' SHEET 4 OF 6 SHEETS STA. TO STA.

F.A. RTE.	SECTION	COUNTY	TOTAL SHEETS	SHEET NO.
	13-00256-00-PV	COOK	107	82
CONTRACT NO. 61B99				
ILLINOIS FED. AID PROJECT				

TS 2380

M:\SOUTH BLVD Ddp\p-h TCSP (13-227)DESIGN\CIVIL\CADD Sheets\IMPORTED FILES FROM PROJECT\ISE\0115227-sh1-t44-Signal cable plan South at Harlem.dgn

MASOUTH BLVD D&P-H TCS# 03-2277\DESIGN\CIVIL\CADD Sheets\IMPORTED FILES FROM PROJECT\MISE.018227-sh1-t15-1Temp Interconnect Plan.dgn
 DePaul



ECON 114



USER NAME = BernardB	DESIGNED - MCH	REVISED - 10/8/2015
PLOT SCALE = 50.0000 "/>		

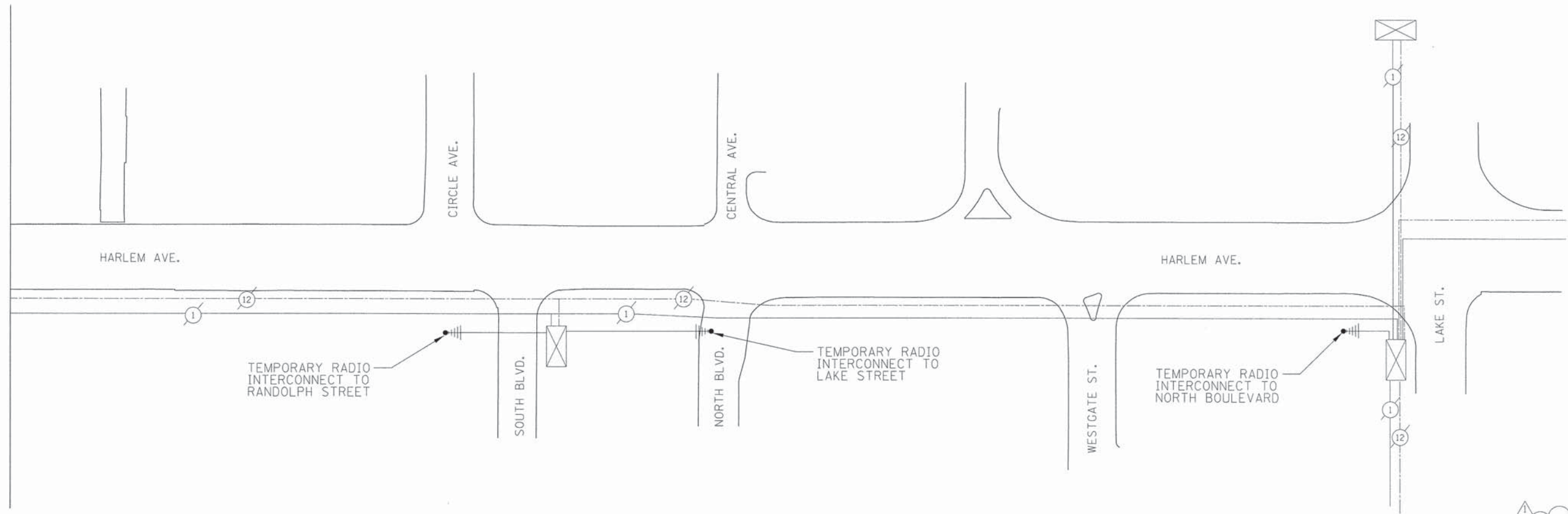
**STATE OF ILLINOIS
DEPARTMENT OF TRANSPORTATION**

TEMPORARY INTERCONNECT PLAN			
HARLEM AVENUE			
SCALE: 1"=80'	SHEET 5	OF 6 SHEETS	STA. TO STA.

F.A. RTE.	SECTION	COUNTY	TOTAL SHEETS	SHEET NO.
	13-00256-00-PV	COOK	107	83
CONTRACT NO. 61B99				
ILLINOIS FED. AID PROJECT				

H:\SOUTH BLVD 04aPer-H_TSP-13-227\DESIGN\CIVIL\0400 Sheets\IMPORTED FILES FROM PROJECT\ISE\018527-shr-usb-Temp Interconnect Schematic.dgn
 10/8/15

MATCHLINE 12+00



MATCHLINE 12+00



USER NAME = BernardB	DESIGNED - MCH	REVISED - 10/8/2015
PLOT SCALE = 48,0000' / in.	DRAWN - JS	REVISED -
PLOT DATE = 10/8/2015	CHECKED - MCH	REVISED -
	DATE - 10/8/2015	REVISED -

STATE OF ILLINOIS
DEPARTMENT OF TRANSPORTATION

TEMPORARY INTERCONNECT SCHEMATIC
HARLEM AVENUE - RANDOLPH STREET TO LAKE STREET
 SCALE: 1"=30' SHEET 6 OF 6 SHEETS STA. TO STA.

F.A. RTE.	SECTION	COUNTY	TOTAL SHEETS	SHEET NO.
	13-00256-00-PV	COOK	107	84
CONTRACT NO. 61B99				
ILLINOIS FED. AID PROJECT				

ECON 114