

STATE OF ILLINOIS
DEPARTMENT OF TRANSPORTATION

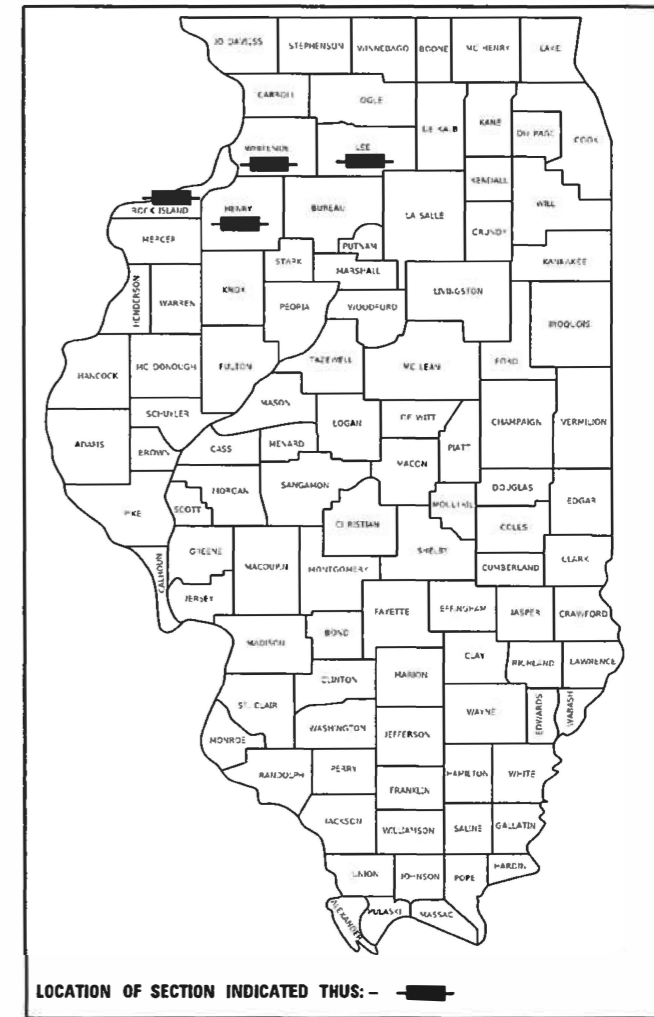
F.A. RTE.	SECTION	COUNTY	TOTAL SHEETS	SHEET NO.
VAR.	D2 BC 2021-1	VARIOUS	14	1
		ILLINOIS	CONTRACT NO. 64P17	

FOR INDEX OF SHEETS, SEE SHEET NO. 2
FOR STATE STANDARDS, SEE SHEET NO. 2

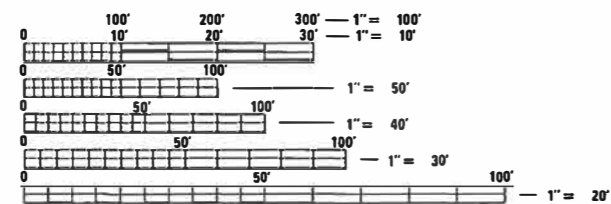
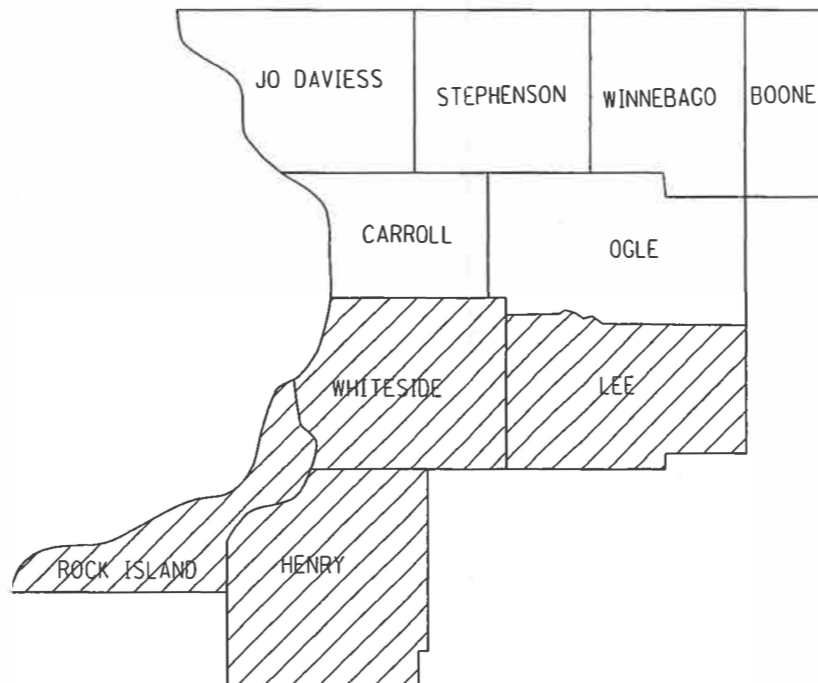
PROPOSED
HIGHWAY PLANS

VARIOUS ROUTES
SECTION D2 BC 2021-1
PROJECT: NHPP-WGLG(201)
TYPE of IMPROVEMENT: BRIDGE WASHING
VARIOUS COUNTIES

D-92-020-20



C-92-050-20



FULL SIZE PLANS HAVE BEEN PREPARED USING STANDARD ENGINEERING SCALES. REDUCED SIZED PLANS WILL NOT CONFORM TO STANDARD SCALES. IN MAKING MEASUREMENTS ON REDUCED PLANS, THE ABOVE SCALES MAY BE USED.

J.U.L.I.E.
JOINT UTILITY LOCATION INFORMATION FOR EXCAVATION
1-800-892-0123
OR 811

PROJECT ENGINEER: DAVID DOSS (815) 284-5416
PROJECT MANAGER: MAHMOUD ETEMADI (815) 284-5393

CONTRACT NO. 64P17

STATE OF ILLINOIS
DEPARTMENT OF TRANSPORTATION


SUBMITTED July 29 20 20
[Signature]
REGIONAL ENGINEER

October 2, 2020
[Signature]
ENGINEER OF DESIGN AND ENVIRONMENT

October 2, 2020
[Signature]
DIRECTOR OF HIGHWAYS PROJECT IMPLEMENTATION

PRINTED BY THE AUTHORITY
OF THE STATE OF ILLINOIS

INDEX OF SHEETS

1	COVER SHEET
2	INDEX OF SHEETS & STATE STANDARDS
3-4	SUMMARY OF QUANTITIES
5	SCHEDULE OF QUANTITIES
6	LOCATION MAP HENRY COUNTY
7	LOCATION MAP LEE COUNTY
8	LOCATION MAP ROCK ISLAND COUNTY
9	LOCATION MAP WHITESIDE COUNTY
10-13	WORK ZONE SIGN DETAILS (DIST STD 34.1)
14	URBAN LANE INSIDE CLOSURE, MULTILANE, 2-WAY, WITH MOUNTABLE MEDIAN (DIST STD 35.1) 

STATE STANDARDS

701006-05	OFF-ROAD OPERATIONS, 2L, 2W, 15'(4.5m) TO 24" (600mm) FROM PAVEMENT EDGE
701101-05	OFF-ROAD OPERATIONS, MULTILANE, 15'(4.5m) TO 24"(600mm) FROM PAVEMENT EDGE
701201-05	LANE CLOSURE, 2L, 2W, DAY ONLY, FOR SPEEDS, ≥ 45 MPH
701301-04	LANE CLOSURE, 2L, 2W, SHORT TIME OPERATIONS
701400-09	APPROACH TO LANE CLOSURE, FREEWAY/EXPRESSWAY
701406-12	LANE CLOSURE, FREEWAY/EXPRESSWAY, DAY OPERATIONS ONLY
701411-09	LANE CLOSURE, MULTILANE, AT ENTRANCE OR EXIT RAMP, FOR SPEEDS ≥ 45 MPH
701606-10	URBAN SINGLE LANE CLOSURE, MULTILANE, 2W WITH MOUNTABLE MEDIAN
701901-08	TRAFFIC CONTROL DEVICES
720011-01	METAL POSTS FOR SIGNS, MARKERS AND DELINEATORS
728001-01	TELESCOPING STEEL SIGN SUPPORT
729001-01	APPLICATIONS OF TYPES A & B METAL POSTS (FOR SIGNS & MARKERS)

MODEL: Default
 FILE: Main15.plt
 P:\uplanroom.dat
 Illinois.gov\PIWIDOT\Documents\DOT_Offices\District 2\Projects\Operations\Bridges_Section\Bridges_Washing_Contracts\2021\November_Letting\64P17_Bridge_Washing_at_various_locations (12)\CAD\64P17-shh-cover.dgn

USER NAME = dossdd	DESIGNED - _____	REVISED - _____
DRAWN - _____	REVISOR - _____	DATE - _____
CHECKED - _____	REVISOR - _____	DATE - _____
PLOT SCALE = 100.0000' / in.	DATE - _____	REVISED - _____
PLOT DATE = Mar-16-2020 04:07:19 PM	DATE - _____	REVISED - _____

**STATE OF ILLINOIS
DEPARTMENT OF TRANSPORTATION**

**INDEX OF SHEETS &
STATE STANDARDS**

SCALE: _____ SHEET ____ OF ____ SHEETS STA. _____ TO STA. _____

F.A. RTE.	SECTION	COUNTY	TOTAL SHEET NO.
VAR.	D2 BC 2021-1	VARIOUS	14 2
			CONTRACT NO. 64P17
ILLINOIS FED. AID PROJECT			

SUMMARY OF QUANTITIES

PAYCODE	DESCRIPTION	UNITS	0047 STP - FLEX 90% FEDERAL 10% STATE	TOTAL
59200101	BRIDGE WASHING NO. 1	EACH	1	1
59200102	BRIDGE WASHING NO. 2	EACH	1	1
59200103	BRIDGE WASHING NO. 3	EACH	1	1
59200104	BRIDGE WASHING NO. 4	EACH	1	1
59200105	BRIDGE WASHING NO. 5	EACH	1	1
59200106	BRIDGE WASHING NO. 6	EACH	1	1
59200107	BRIDGE WASHING NO. 7	EACH	1	1
59200108	BRIDGE WASHING NO. 8	EACH	1	1
59200109	BRIDGE WASHING NO. 9	EACH	1	1
59200110	BRIDGE WASHING NO. 10	EACH	1	1
59200113	BRIDGE WASHING NO. 13	EACH	1	1
59200111	BRIDGE WASHING NO. 11	EACH	1	1
59200114	BRIDGE WASHING NO. 14	EACH	1	1
59200112	BRIDGE WASHING NO. 12	EACH	1	1



MODEL: Default
 FILE: Model: 644p17.dwg
 PROJECT: 644p17.dwg
 USER: drossdd
 DATE: 2020/03/16 04:07:29 PM
 PLOT DATE: 2020/03/16 04:07:29 PM

USER NAME = drossdd	DESIGNED - 11	REVISED - _____
	DRAWN - _____	REVISED - _____
PLOT SCALE = 100.0000' / in.	CHECKED - _____	REVISED - _____
PLOT DATE = Mar-16-2020 04:07:29 PM	DATE - _____	REVISED - _____

**STATE OF ILLINOIS
DEPARTMENT OF TRANSPORTATION**

SUMMARY OF QUANTITIES

SCALE: _____ SHEET _____ OF _____ SHEETS STA. _____ TO STA. _____

F.A. RTE.	SECTION	COUNTY	TOTAL SHEETS	SHEET NO.
VAR.	D2 BC 2021-1	VARIOUS	13	3
			CONTRACT NO. 64P17	
ILLINOIS FED. AID PROJECT				

SCHEDULE OF QUANTITIES

PAY ITEM	PROJECT LOCATION	SN	FACILITY CARRIED	FEATURE CROSSED	BRIDGE LOCATION	TRAFFIC CONTROL
BRIDGE WASHING NO. 1	1	037-0003	FAI 74 & 280 EB	US6, BN RR, & TR38	1 MI SW GREEN ROCK	701400, 701406 & 701201
BRIDGE WASHING NO. 2		037-0004	FAI 74 & 280 WB	US6, BN RR, & TR38	1 MI SW GREEN ROCK	701400, 701406 & 701201
BRIDGE WASHING NO. 3	2	052-0055	CHICAGO RD	I-39 & US 51	4.8 MI S OF US 30	701400, 701406 & 701201
BRIDGE WASHING NO. 4	3	081-0124	265 ST N CH 4	I-88	0.9 MI SW JCT ILL 92	701400, 701406 & 701201
BRIDGE WASHING NO. 5	4	081-0125	FAS 1204 ILL 92	I-88	8.0 MI. E. SILVIS	701400, 701406 & 701201
BRIDGE WASHING NO. 6	5	081-0130	MOLINE RD (OLD IL2)	I-88	1.5 MI. W.HILLSDALE	701400, 701406 & 701201
BRIDGE WASHING NO. 7	6	081-0133	122ND AVE N	I-88	.2 MI W WHITESIDE CO	701400, 701406 & 701201
BRIDGE WASHING NO. 8	7	081-0166	27TH ST. - MOLINE	FAI 280	S EDGE MOLINE	701400, 701406, 701606 & 701411
BRIDGE WASHING NO. 9	8	098-0055	FAS 2184 CORDOVA RD	I-88	2.5 MI. W.ERIE	701400, 701406 & 701201
BRIDGE WASHING NO. 10	9	098-0056	CH 21 SAND RD	I-88 & STREAM	2.5 MI. NW. ERIE	701400, 701406 & 701201
BRIDGE WASHING NO. 11	10	098-0067	YORKTOWN ROAD	I-88	3 MI NE LYNDON	701400, 701406 & 701201
BRIDGE WASHING NO. 12	11	098-0091	US 30	I-88	3 MI EAST ROCK FALLS	701400, 701406 & 701201
BRIDGE WASHING NO. 13	12	081-0038	US RT 67	N CHANNEL ROCK RIVER	S EDGE ROCK ISLAND	701606, DIST STD 35.1
BRIDGE WASHING NO. 14		081-0040	US RT 67	S CHANNEL ROCK RIVER	N EDGE MILAN	701606, DIST STD 35.1

MODEL: Default
 FILE: \\harris-pub\lanroom\data\illinois.gov\PWIDOT\Documents\DOT_Offices\District 2\Projects\Operations\Bridges_Section\Bridges_Washing_Contracts\2021\November_Lettering\Bridges_Washing_at_various_locations_112\CAD\64P17_sch-quant.dgn

USER NAME = DOSSDD	DESIGNED - _____	REVISED - _____
	DRAWN - _____	REVISED - _____
PLOT SCALE = 100,0000' / in.	CHECKED - _____	REVISED - _____
PLOT DATE = Oct-26-2020 09:19:49 AM	DATE - _____	REVISED - _____

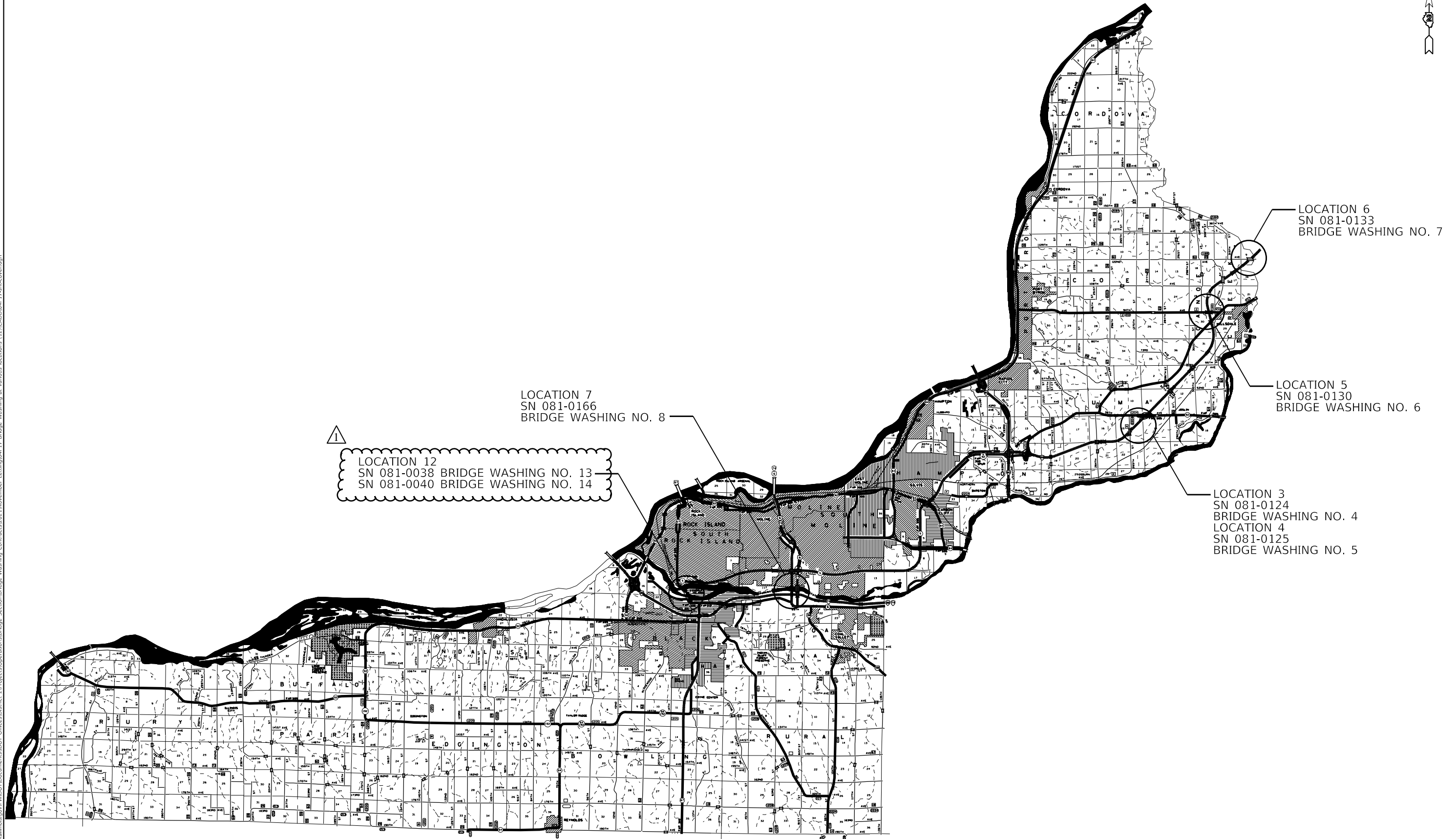
**STATE OF ILLINOIS
DEPARTMENT OF TRANSPORTATION**

SCHEDULE OF QUANTITIES

SCALE: _____ SHEET ____ OF ____ SHEETS STA. _____ TO STA. _____

F.A. RTE.	SECTION	COUNTY	TOTAL SHEETS	SHEET NO.
VAR.	D2 BC 2021-1	VARIOUS	13	5
CONTRACT NO. 64P17				
ILLINOIS FED. AID PROJECT				

ROCK ISLAND COUNTY



LOCATION 12
 SN 081-0038 BRIDGE WASHING NO. 13
 SN 081-0040 BRIDGE WASHING NO. 14

LOCATION 7
 SN 081-0166
 BRIDGE WASHING NO. 8

LOCATION 6
 SN 081-0133
 BRIDGE WASHING NO. 7

LOCATION 5
 SN 081-0130
 BRIDGE WASHING NO. 6

LOCATION 3
 SN 081-0124
 BRIDGE WASHING NO. 4
 LOCATION 4
 SN 081-0125
 BRIDGE WASHING NO. 5

MODEL: Default
 FILE: \\baronm.dia.illinois.gov\RD\DOT\Documents\DOT_Offices\District_2\Projects\Operations\Bridges_Section\Bridges_Washing_Contract2021\November_Leitch\64P17_sht-cover.dgn

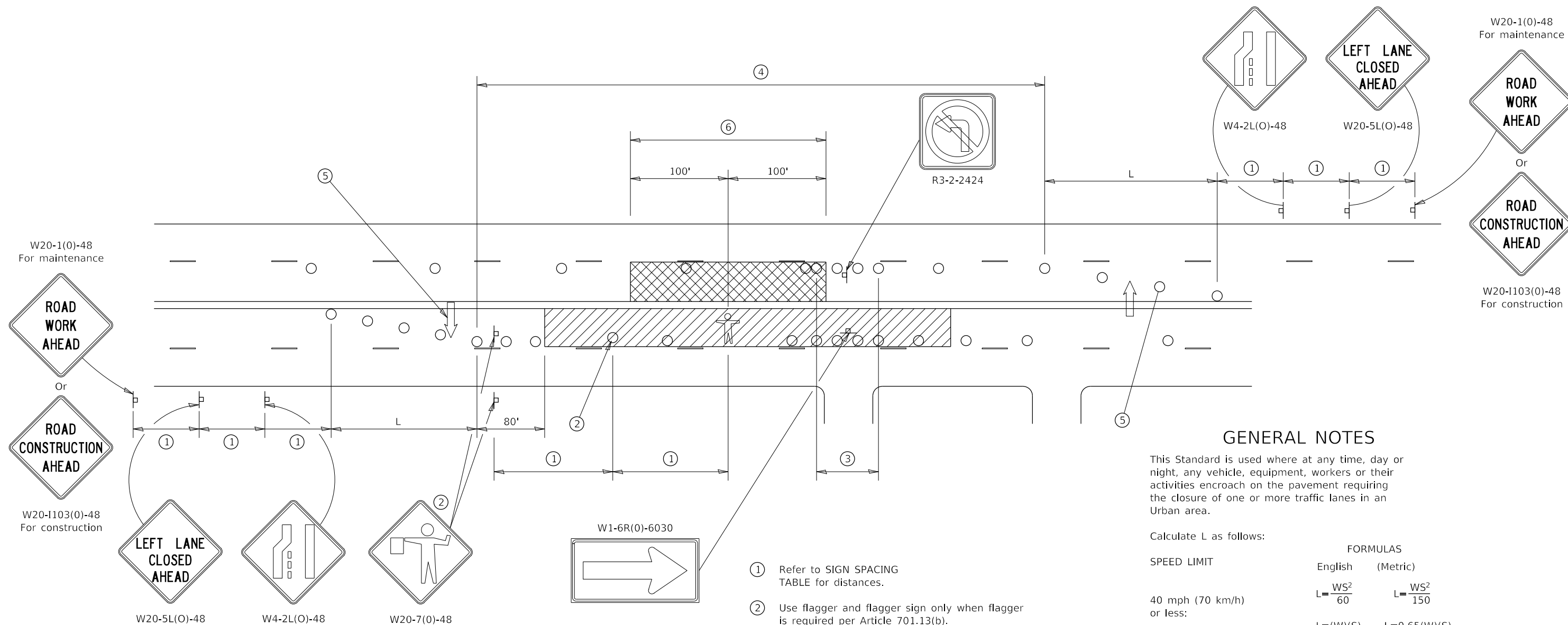
USER NAME = DOSSDD	DESIGNED - _____	REVISED - _____
	DRAWN - _____	REVISED - _____
PLOT SCALE = 100,0000' / in.	CHECKED - _____	REVISED - _____
PLOT DATE = Oct-26-2020 09:23:46 AM	DATE - _____	REVISED - _____

STATE OF ILLINOIS
 DEPARTMENT OF TRANSPORTATION

ROCK ISLAND COUNTY LOCATION MAP	
SCALE: _____	SHEET _____ OF _____ SHEETS STA. _____ TO STA. _____

F.A. RTE.	SECTION	COUNTY	TOTAL SHEETS	SHEET NO.
VAR.	D2 BC 2021-1	VARIOUS	13	8
CONTRACT NO. 64P17				
ILLINOIS FED. AID PROJECT				

URBAN LANE INSIDE CLOSURE, MULTILANE, 2-WAY, WITH MOUNTABLE MEDIAN



GENERAL NOTES

This Standard is used where at any time, day or night, any vehicle, equipment, workers or their activities encroach on the pavement requiring the closure of one or more traffic lanes in an Urban area.

Calculate L as follows:

SPEED LIMIT	FORMULAS	
	English	(Metric)
40 mph (70 km/h) or less:	$L = \frac{WS^2}{60}$	$L = \frac{WS^2}{150}$
45 mph (80 km/h) or greater:	$L = (W)(S)$	$L = 0.65(W)(S)$

W = Width of offset in feet (meters).

S = Normal posted speed mph (km/h).

All dimensions are in inches (millimeters) unless otherwise shown.

Lane closures in the opposite direction shall be removed when no workers are present.

Cones or reflectorized cones shall not be used during hours of darkness.

This Traffic Control detail shall be included in the cost of Traffic Control and Protection Standard 701606.

SYMBOLS

- WORK AREA
- CLOSED LANE
- ARROW BOARD
- SIGN ON PORTABLE OR PERMANENT SUPPORT
- CONE, DRUM OR BARRICADE
- FLAGGER WITH TRAFFIC CONTROL SIGN.
- WORKER ON FOOT

SIGN SPACING	
Posted Speed	Sign Spacing
55	500' (150 m)
50-45	350' (100 m)
<45	200' (60 m)

- ① Refer to SIGN SPACING TABLE for distances.
- ② Use flagger and flagger sign only when flagger is required per Article 701.13(b).
- ③ Devices at 10' centers from edge of radius return to edge of radius return when left turns are prohibited due to actively working in the intersection.
- ④ Cones at 20' (6 m) centers for 250' (75 m). Additional cones may be placed at 40' (12 m) centers. When drums or Type I or Type II barricades are used, the interval between devices may be doubled (excluding devices in intersections).
- ⑤ Cones, drums or barricades at 20' (6 m) centers in taper.
- ⑥ No equipment, materials, vehicles, or other hazards are allowed in the closed lane in the opposite direction within 100' of a worker on foot.