

PPS: 6-01120-0000

CODE NO.	ITEM	UNIT	TOTAL QUANTITY	URBAN	
				CONSTR. CODE	CONSTR. CODE
				NHPP 80/20 ILLINOIS/ADAMS	100% MISSOURI/ADAMS
				BRIDGE 0013 S.N. 001-0019	BRIDGE 0013 S.N. 001-0019
35400400	PORTLAND CEMENT CONCRETE BASE COURSE WIDENING 9"	SQ YD	10	5	5
40600290	BITUMINOUS MATERIALS (TACK COAT)	POUND	5800	2900	2900
40604010	HOT-MIX ASPHALT SURFACE COURSE, IL-9.5FG, MIX "D", N50	TON	1125	562.5	562.5
44000157	HOT-MIX ASPHALT SURFACE REMOVAL, 2"	SQ YD	1408	704	704
48203100	HOT-MIX ASPHALT SHOULDERS	TON	159	79.5	79.5
50102400	CONCRETE REMOVAL	CU YD	113.5	56.75	56.75
50300100	FLOOR DRAINS	EACH	4	2	2
50300255	CONCRETE SUPERSTRUCTURE	CU YD	134.7	65.35	65.35
50800205	REINFORCEMENT BARS, EPOXY COATED	POUND	49340	24670	24670
52000110	PREFORMED JOINT STRIP SEAL	FOOT	1120	560	560
52100520	ANCHOR BOLTS, 1"	EACH	8	4	4
60603500	COMBINATION CONCRETE CURB AND GUTTER, TYPE B-6.06	FOOT	12	6	6
60618300	CONCRETE MEDIAN SURFACE, 4 INCH	SQ FT	18	9	9
60619200	CONCRETE MEDIAN, TYPE SB-6.06	SQ FT	8	4	4
* 63100167	TRAFFIC BARRIER TERMINAL, TYPE 1 (SPECIAL) TANGENT	EACH	2	1	1



* SPECIALTY ITEM

△ REV. 10-28-2020

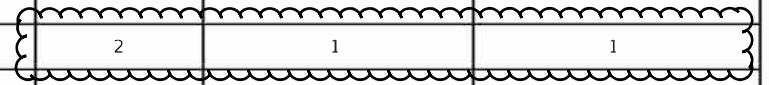
REV. - MS

MODEL: Default
FILE: M:\GIS\p101120000.dwg
PROJECT: I:\Projects\6-01120-0000\DOT\Office\DOT\Documents\DOT\Office\DOT\6-01120-0000\CAD\Sheet\0627158.dwg

USER NAME = Default	DESIGNED - _____	REVISED - _____	STATE OF ILLINOIS DEPARTMENT OF TRANSPORTATION	SUMMARY OF QUANTITIES				F.A.P. RTE.	SECTION	COUNTY	TOTAL SHEETS	SHEET NO.
DRAWN - _____	REVISOR - _____	REVISOR - _____		63	(12B)BP,BRR,BJR-1,BDR,L	ADAMS	78	3				
PLOT SCALE = 100.0000' / in.	CHECKED - _____	REVISOR - _____		SCALE: NONE				SHEET 1 OF 5 SHEETS		STA. N/A	TO STA. N/A	CONTRACT NO. 72L58
PLOT DATE = 8/25/2020	DATE - _____	REVISOR - _____		ILLINOIS FED. AID PROJECT								

PPS: 6-01120-0000

CODE NO.	ITEM	UNIT	TOTAL QUANTITY	URBAN	
				CONSTR. CODE	CONSTR. CODE
				NHPP 80/20 ILLINOIS/ADAMS	100% MISSOURI/ADAMS
				BRIDGE 0013 S.N. 001-0019	BRIDGE 0013 S.N. 001-0019
63200310	GUARDRAIL REMOVAL	FOOT	100	50	50
64300240	IMPACT ATTENUATORS (FULLY REDIRECTIVE, NARROW), TEST LEVEL 2	EACH	1	0.5	0.5
67000400	ENGINEER'S FIELD OFFICE, TYPE A	CAL MO	24	12	12
67100100	MOBILIZATION	L SUM	1	0.5	0.5
70100315	TRAFFIC CONTROL AND PROTECTION, STANDARD 701422	EACH	2	1	1
70107025	CHANGEABLE MESSAGE SIGN	CAL DA	974	487	487
* 72501000	TERMINAL MARKER - DIRECT APPLIED	EACH	2	1	1
* 78009000	MODIFIED URETHANE PAVEMENT MARKING - LETTERS AND SYMBOLS	SQ FT	15.6	7.8	7.8
* 78009005	MODIFIED URETHANE PAVEMENT MARKING - LINE 5"	FOOT	18985	9492.5	9492.5
* 78009006	MODIFIED URETHANE PAVEMENT MARKING - LINE 6"	FOOT	261	130.5	130.5
* 78009012	MODIFIED URETHANE PAVEMENT MARKING - LINE 12"	FOOT	18	9	9
* 78009024	MODIFIED URETHANE PAVEMENT MARKING - LINE 24"	FOOT	12	6	6
* 80400100	ELECTRIC SERVICE INSTALLATION	EACH	1	0.5	0.5
* 81028200	UNDERGROUND CONDUIT, GALVANIZED STEEL, 2" DIA.	FOOT	55	27.5	27.5



* SPECIALTY ITEM

△ REV. 10-28-2020

REV. - MS

MODEL: Default
FILE: M:\GIS\p11\p11room.dwg
PROJECT: I:\DOT\Documents\DOT Office\District 6\Projects\DEZ158\CAD\Drawings\CAD\Sheet\DEZ158-att-500.dgn

USER NAME = Default	DESIGNED - _____	REVISED - _____
DRAWN - _____	REVISIONS - _____	REVISIONS - _____
PLOT SCALE = 100.0000' / in.	CHECKED - _____	REVISIONS - _____
PLOT DATE = 8/25/2020	DATE - _____	REVISIONS - _____

**STATE OF ILLINOIS
DEPARTMENT OF TRANSPORTATION**

SUMMARY OF QUANTITIES			
SCALE: NONE	SHEET 2	OF 5 SHEETS	STA. N/A TO STA. N/A

F.A.P. RTE.	SECTION	COUNTY	TOTAL SHEETS	SHEET NO.
63	(12B)BP,BRR,BJR-1,BDR,L	ADAMS	78	4
CONTRACT NO. 72L58				
ILLINOIS FED. AID PROJECT				

PPS: 6-01120-0000

CODE NO.	ITEM	UNIT	TOTAL QUANTITY	URBAN	
				CONSTR. CODE	CONSTR. CODE
				NHPP 80/20 ILLINOIS/ADAMS BRIDGE 0013	100% MISSOURI/ADAMS BRIDGE 0013
				S.N. 001-0019	S.N. 001-0019
* 89500100	RELOCATE EXISTING SIGNAL HEAD	EACH	1	0.5	0.5
* 89501150	RELOCATE EXISTING TRAFFIC SIGNAL POST	EACH	1	0.5	0.5
89502300	REMOVE ELECTRIC CABLE FROM CONDUIT	FOOT	78	39	39
89502385	REMOVE EXISTING CONCRETE FOUNDATION	EACH	1	0.5	0.5
X0325541	REMOVE EXISTING LIGHTING SYSTEM	L SUM	1	0.5	0.5
X0327980	PAVEMENT MARKING REMOVAL - WATER BLASTING	SQ FT	4657.6	2328.8	2328.8
X0328000	REMOVE IMPACT ATTENUATORS, STATE OWNED	EACH	1	0.5	0.5
X0600004	CAULKING STRUCTURAL STEEL CONNECTIONS	GALLON	1	0.5	0.5
X0900070	FULL LANE SEALANT WATERPROOFING SYSTEM	SQ YD	9209	4604.5	4604.5
* X1400371	MAST ARM, STREET LIGHTING, 4'	EACH	6	3	3
X4403300	CONCRETE MEDIAN REMOVAL	SQ FT	108	54	54
X7010216	TRAFFIC CONTROL AND PROTECTION, (SPECIAL)	L SUM	1	0.5	0.5
* X8110453	CONDUIT ATTACHED TO STRUCTURE, 3/4" DIA. STAINLESS STEEL	FOOT	180	90	90

* SPECIALTY ITEM



△ REV. 10-28-2020

REV. - MS

MODEL: Default
 FILE: M:\GIS\p101120000.dwg
 PROJECT: 6-01120-0000
 SHEET: 6 OF 6
 DATE: 8/23/2020

USER NAME = Default	DESIGNED - _____	REVISED - _____
DRAWN - _____	REVISIONS - _____	REVISIONS - _____
PLOT SCALE = 100.0000' / in.	CHECKED - _____	REVISIONS - _____
PLOT DATE = 8/23/2020	DATE - _____	REVISIONS - _____

**STATE OF ILLINOIS
DEPARTMENT OF TRANSPORTATION**

SUMMARY OF QUANTITIES

SCALE: NONE SHEET 4 OF 5 SHEETS STA. N/A TO STA. N/A

F.A.P. RTE.	SECTION	COUNTY	TOTAL SHEETS	SHEET NO.
63	(12B)BP,BRR,BJR-1,BDR,L	ADAMS	78	6
CONTRACT NO. 72L58			ILLINOIS FED. AID PROJECT	

PPS: 6-01120-0000

CODE NO.	ITEM	UNIT	TOTAL QUANTITY	URBAN	
				CONSTR. CODE	CONSTR. CODE
				NHPP 80/20 ILLINOIS/ADAMS	100% MISSOURI/ADAMS
				BRIDGE 0013	BRIDGE 0013
				S.N. 001-0019	S.N. 001-0019
X8140215	HEAVY-DUTY HANDHOLE TO BE ADJUSTED	EACH	1	0.5	0.5
* X8210402	LUMINAIRE MOUNTING BRACKET - SPECIAL	EACH	6	3	3
* X8260112	MAINTENANCE OF NAVIGATION LIGHTING SYSTEM	CAL MO	6	3	3
* 82200605	WATERWAY OBSTRUCTION WARNING LUMINAIRE, LED	EACH	10	5	5
X0322390	STRAIGHTEN BENT MEMBER	EACH	1	0.5	0.5
* Z0007101	CONTAINMENT AND DISPOSAL OF LEAD PAINT CLEANING RESIDUES NO. 1	L SUM	1	0.5	0.5
Z0033700	LONGITUDINAL JOINT SEALANT	FOOT	3,512	1,756	1,756
Z0001905	STRUCTURAL STEEL REPAIR	POUND	55,910	27,955	27,955
Ø Z0076600	TRAINEES	HOUR	3000	3000	
Ø Z0003500	BEAM STRAIGHTENING	EACH	1	0.5	0.5
Ø Z0076604	TRAINEES TRAINING PROGRAM GRADUATE	HOUR	3000	3000	
* Z0010501	CLEANING AND PAINTING STEEL BRIDGE NO. 1	L SUM	1	0.5	0.5
Z0048665	RAILROAD PROTECTION LIABILITY INSURANCE	L SUM	1	0.5	0.5
Z0004556	HOT-MIX ASPHALT SURFACE REMOVAL (DECK)	SQ YD	9089	4544.5	4544.5

* SPECIALTY ITEM

Ø 0042



△ REV. 10-28-2020

REV. - MS

MODEL: Default
FILE: M:\GIS\p101120000.dwg
PROJECT: 6-01120-0000
OFFICE: DISTRICT 6
DRAWN: JLD/MLD
CHECKED: JLD/MLD
DATE: 8/23/2020

USER NAME = Default	DESIGNED - _____	REVISED - _____
	DRAWN - _____	REVISED - _____
PLOT SCALE = 100.0000' / in.	CHECKED - _____	REVISED - _____
PLOT DATE = 8/23/2020	DATE - _____	REVISED - _____

**STATE OF ILLINOIS
DEPARTMENT OF TRANSPORTATION**

SUMMARY OF QUANTITIES

SCALE: NONE SHEET 5 OF 5 SHEETS STA. N/A TO STA. N/A

F.A.P. RTE.	SECTION	COUNTY	TOTAL SHEETS	SHEET NO.
63	(12B)BP,BRR,BJR-1,BDR,L	ADAMS	78	7
			CONTRACT NO. 72L58	
ILLINOIS FED. AID PROJECT				

GENERAL NOTES

All structural steel shall conform to AASHTO Classification M-270 Gr. 36, unless otherwise noted. Fasteners shall be high strength bolts. Bolts 7/8"Ø, open holes 1 5/16"Ø, unless otherwise noted. Reinforcement bars designated (E) shall be epoxy coated. Plan dimensions and details relative to existing plans are subject to nominal construction variations. The Contractor shall field verify existing dimensions and details affecting new construction and make necessary approved adjustments prior to construction or ordering of materials. Such variations shall not be cause for additional compensation for a change in scope of the work, however, the Contractor will be paid for the quantity actually furnished at the unit price bid for the work. Cost of removal and re-installation of all members necessary to complete the work as detailed on the plans and as specified in the Special Provisions shall be included with Structural Steel Repair. The deck surface shall have its final finish tined according to Article 420.09(e)(1) of the Standard Specifications. Cost included with Concrete Superstructure. Joint openings shall be adjusted according to Article 520.04 of the Std. Specs. when the deck is poured at an ambient temperature other than 50° F. Existing reinforcement bars extending into the removal area shall be cleaned, straightened and incorporated into the new construction. Any reinforcement bars that are damaged during concrete removal shall be replaced with an approved bar splicer or anchorage system. Cost included with Concrete Removal. The Contractor shall ensure that no damage is done to any material that is to remain. Any damage is to be repaired, at the cost of the Contractor, to the satisfaction of the Engineer. The Contractor is required to provide Structural Assessment Report(s) for the proposed work. See Special Provision. The Contractor shall retain the services of an engineering firm, prequalified in the IDOT consultant selection category of Highway Bridges (Complex), for preparation of the Structural Assessment Report(s). Contractor's pre-approval shall not be applicable for this project. See Special Provision.

CURRENT RATINGS ON FILE FOR EXISTING STRUCTURE:

Inventory: HS 0.62
 Operating: HS 1.19
 Live Load Restrictions: Legal Loads only

Inventory and Operating Ratings and Live Load Restrictions are provided for information only. Inventory and Operating Ratings are based on HS loading and configuration. Live Load Restrictions are based on Illinois legal loads and configurations. The Ratings and Live Load Restrictions are not necessarily representative of capacities to support the Contractors equipment. The Contractor is advised that the existing structure contains members that are in a deteriorated condition with reduced load carrying capacity. It is the Contractor's responsibility to account for the condition of the existing structure when developing construction procedures for the complete or partial removal, or replacement of the structure. An Existing Structure Information Package is available on request as noted in the Special Provisions. Full closure is required for bituminous surface milling and overlay, joint replacements and structural steel repairs in the truss spans (9 & 10). The remainder of the work may utilize staged construction with single lane closures. During full closure, traffic shall be diverted to two-way traffic on Bayview Bridge utilizing crossover transitions at each end of the bridge.

GENERAL NOTES CON'T.

Cleaning & painting of all contact surfaces shall meet the requirements for Primary Connections as specified in the special provision for "Cleaning and Painting Contact Surface Areas of Existing Steel Structures" except as noted. Cleaning and painting of the existing structural steel shall be as specified in the special provision for "Cleaning and Painting Existing Steel Structures". All areas to be painted shall be cleaned per Near White Blast Cleaning (SSPC-SP10). The designated areas cleaned per Near White Blast Cleaning (SSPC-SP10) shall be painted according to the requirements of System 1 Organic Zinc Rich Primer / Epoxy / Urethane Paint System. The color of the final finish coat for all steel surfaces specified shall be Blue, Munsell No 10B 3/6. Caution shall be used to not damage the galvanizing of the new electrical conduit during the cleaning. The Contractor shall submit calculations and details demonstrating the structural integrity of the bridge is maintained under the additional imposed loads of the containment system. See special provisions. Containment of cleaning residue is required to control nuisance dust. See special provisions. SSPC QP1 (and SSPC QP2) Certification is required for this Contract. The Inorganic Zinc Rich Primer / Acrylic / Acrylic Paint System shall be used for shop and field painting of new structural steel except where otherwise noted. The color of the final finish coat shall be Blue, Munsell No. 10B 3/6. The existing structural steel coating contains lead. The Contractor shall take appropriate precautions to deal with the presence of lead on this project. Existing structural steel that will be in contact with new structural steel shall be cleaned and painted prior to erection as required by the GBSP "Cleaning and Painting Contact Surface Areas of Existing Steel Structures". Cleaning and painting of existing structural steel shall be paid for as "Cleaning and Painting Steel Bridge", at the locations specified. The areas of structural steel to be cleaned and painted are as follows:

Beam Spans (1-3, 22-37): Clean and paint fascia beams 100% full length; plus 100% of all beams, bearings and other structural steel within five (5) feet (measured along the beam) on either side of deck joints.

Girder Spans (4-8, 11-21): Clean and paint girders Splash Zone only (exterior surfaces and bottom of the bottom flange); 100% of floor beam that overhangs outside the girders; 100% of floor beams at deck joints; and 100% of girder, five (5) feet away from joints.

Truss Spans (9 & 10): Clean and paint 100% of truss to fourteen (14) feet above deck; 100% of floor beam from truss to first stringer; floor beam and all stringers five (5) feet (measured along the beam) on either side of deck joints (including existing finger plate joints); 100% of fascia stringer; and 100% of bottom chord lateral bracing located outside the fascia stringer.

Additional locations of previous repairs shall be marked by the Engineer in the field for cleaning and painting. The approximate quantity of these additional locations is 1290 Sq. Ft.


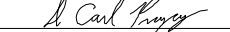


TOTAL BILL OF MATERIAL

ITEM	UNIT	QUANTITY
Concrete Removal	Cu. Yd.	113.5
Concrete Superstructure	Cu. Yd.	134.7
Reinforcement Bars, Epoxy Coated	Pound	49340
Structural Steel Repair	Pound	55960
Preformed Joint Strip Seal	Foot	1120
Hot-Mix Asphalt Surface Removal (Deck)	Sq. Yd.	9089
Hot-Mix Asphalt Surface Course, IL-9.5FG, Mix "D", N50	Ton	1125
Full Lane Sealant Waterproofing System	Sq. Yd.	9209
Anchor Bolts, 1"	Each	8
Straighten Bent Member	Each	1
Cleaning and Painting Steel Bridge, No. 1	L. Sum	1
Containment and Disposal of Lead Paint Cleaning Residues	L. Sum	1
Caulking Structural Steel Connections	Gallon	4
Floor Drains	Each	4

1 REV. 10-28-2020



DESIGNED - JSB	EXAMINED - 	DATE - OCTOBER 5, 2020
CHECKED - VHV	PASSED - 	REVISED 10/27/2020 JSB
DRAWN - daburdell Steffen	ENGINEER OF BRIDGES AND STRUCTURES	REVISED -

**STATE OF ILLINOIS
 DEPARTMENT OF TRANSPORTATION**

**GENERAL NOTES & BILL OF MATERIAL
 SN 001-0019**

SHEET NO. 3 OF 34 SHEETS

F.A.P. RTE.	SECTION	COUNTY	TOTAL SHEETS	SHEET NO.
63	(12B),BP,BRR,BJR-1,BDR,L	ADAMS	78	11
CONTRACT NO. 72L58			ILLINOIS FED. AID PROJECT	

JOINT REPLACEMENT
(All Spans)

Repair	Location	Sheet No.
B & C	Install new Preformed Strip Seals at Both Abutments, Piers 1 thru 7, Truss Span Relief Joints, and Piers 11 thru 36	6 - 11

FLOORBEAM REPAIRS
(Spans 6, 7 & 11)

Item No.	Location	Sheet No.
316	Sp. 7, FB 5, at N. end under light pole & edge of deck	13

FLOORBEAM REPAIRS
(Spans 9 & 10)

Item No.	Location	Sheet No.
103	Sp. 9, FB 0, Below Stringers 1, 2, 3 & 5	15
767	Sp. 9, FB 6, at S. end	15
569	Sp. 9, FB 7, N. end at Stringer 5, S. End	15
28	Sp. 9, FB 8, at L8N & at Stringer 5	14
35	Sp. 9, FB 14, 5' from L14N, Pan 15 & 5' from L14S	14
217	Sp. 9, FB 16, N. & S. ends	16
37	Sp. 9, FB 18, Top Flange	16
47	Sp. 10, FB 14', 5' from L14'N & 1' from L14'S	15
50	Sp. 10, FB 10', Full length	16
51	Sp. 10, FB 9', 1' from L9'S & L9'N	16
52	Sp. 10, FB 6', 5' from L6'S	17
54	Sp. 10, FB 3', 5' from L3'S, Pan 4', at Stringer 5	17
55	Sp. 10, FB 2', 2' from L2'S btwn. Stringers 3 & 4	17
647	Sp. 10, FB 1', 3' from L1'N	17

DIAPHRAGM REPLACEMENT
(Span 37)

Item No.	Location	Sheet No.
747	Sp. 37, Pier 31 btwn. Beams 1 & 2	32

LACING REPAIR
(Spans 9 & 10)

Item No.	Location	Sheet No.
555	Sp. 9, L4S-M5S, 4th & 16th Lacing from L4S	30
214	Sp. 10, L15N-L16N, 16th & 22nd Lacing from L16N	30
607	Sp. 9, at L20N (Diaphragm Plate)	31
615	Sp. 10, at L20S, 1st, 2nd & 3rd Lacing from L20S	31

MISSING GUARDRAIL BOLTS

Actual location & bolt size to be determined in the field. See Detail A.

Item No.	Span	Member	Location	Total Missing
152	6	S. Rail	40' E. of P6	1
	28	S. Rail	10' W. of P27	1
	37	S. Rail	17' E. of W. Abut.	* 4

* Misdriilled holes

GUSSET PLATE REPAIRS
(Span 9)

Item No.	Location	Sheet No.
215	Sp. 9, L16S outside plate	29
216	Sp. 9, L16S inside plate	29

SWAY BRACING REPAIRS
(Span 9)

Item No.	Location	Sheet No.
26	Sp. 9, Panel Point 7	33

BEARING KNEE BRACE REPAIRS
(Span 9)

Item No.	Location	Sheet No.
226	Sp. 9, N. Truss, Inside Knee	33

LATERAL BRACING REPAIRS
(Span 17)

Item No.	Location	Sheet No.
473	Sp. 17, Girder 2 at F.B. 5	33

BEARING REPAIRS
(Spans 5 thru 8 & 11 thru 20)

Item	Span	Girder	Location	Sheet
527	5	2	at F.B. 2	12
532	6	2	at F.B. 17	
765	6	2	at F.B. 2	
726	7	2	at F.B. 1	
165	8	1 & 2	at Pier 8	
458	11	2	at F.B. 13	
286	14	1	at F.B. 7	
478	18	1	at Pier 17	
479	18	2	at Pier 17	
485	19	1	at Pier 18	
492	20	1	at Pier 19	
293	20	1 & 2	at F.B. 17	

LADDER REPAIRS
(Spans 32 & 33)

Item No.	Location	Sheet No.
512	South End of Pier 32	34

DRAIN REPAIRS
(Spans 6-8, 26, 30 & 34)

Item No.	Location	Sheet No.
533	Sp. 6-7, N. End of Pier 6	34
434	Sp. 7-8, N. End of Pier 7	
298	Sp. 26, N. Fascia, 12' East of Pier 26	
763	Sp. 30, N. Side, Mid-span	
672	Sp. 34, N. Side, 1st & 2nd Drain W. of Pier 33	1

Note:
All Item Nos. are based on the 2019 NBIS Inspection Report.

BEAM REPAIRS
(Spans 1, 2, 22 thru 35 & 37)

Item No.	Location	Sheet No.
724	Span 1, Beam B1, at E. Abut.	20
426	Span 2, Beam B1, 5' W. of C, midspan	20
759	Span 22, Beam B1, at P21	21
495	Span 22, Beam B1, midspan	21
693	Span 22, Beam B5, throughout	21
697	Span 23, Beam B2, at P23	22
696	Span 23, Beam B5, 10' from P23, at P23	22
701	Span 24, Beam B1 & B5, 12' E. of P24	22
409	Span 24, Beam B1, throughout	23
411	Span 25, Beam B1, throughout	23
499	Span 26, Beam B1, 5' E. of midspan	24
297	Span 26, Beam B5, full length	24
504	Span 27, Beam B1, midspan	25
413	Span 27, Beam B5, at P27, E. side, midspan	22 & 25
414	Span 28, Beam B1, midspan, S. side	25
720	Span 29, Beam B5, at midspan	26
419	Span 30, Beam B1, midspan, S. side	26
99	Span 31, Beam B1, midspan	27
420	Span 31, Beam B5, throughout	26
301	Span 32, Beam B1, midspan	27
302	Span 32, Beam B5, midspan	27
515	Span 33, Beam B5, 2' E. of midspan	27
421	Span 34, Beam B1, 5' E. of midspan, S. side, 5' long	27
422	Span 34, Beam B5, 2' E. of midspan	28
304	Span 35, Beam B5, 5' E. of midspan	28
709	Span 37, Beam B1, 5' E. of C	28

STRINGER REPAIRS
(Spans 9 & 10)

Item No.	Location	Sheet No.
537	Sp. 9, Stringer 1, throughout Pan 1	18
	Sp. 9, Stringer 1, 5' from FB 1, Pan 2	19
	Sp. 9, Stringer 1, 8' from FB 2, Pan 2	19
	Sp. 9, Stringer 5, throughout Pan 2	18
	Sp. 9, Stringer 5, throughout Pan 3	18
	Sp. 9, Stringer 1, 8' from FB 3, Pan 3	19
	Sp. 9, Stringer 1, throughout Pan 4	18
	Sp. 9, Stringer 1, throughout Pan 6	18
	Sp. 9, Stringer 1, throughout Pan 11	18
	Sp. 9, Stringer 1, throughout Pan 12	18
	Sp. 9, Stringer 5, throughout Pan 12	18
	Sp. 9, Stringer 5, throughout Pan 13	18
	Sp. 9, Stringer 1, 8' from FB 14, Pan 14	18
	Sp. 9, Stringer 5, throughout Pan 14	19
	Sp. 9, Stringer 1, throughout Pan 15	18
	Sp. 9, Stringer 5, throughout Pan 15	18
	Sp. 9, Stringer 5, throughout Pan 16	18
	Sp. 9, Stringer 5, 0' from FB 18, Pan 19	18
	Sp. 10, Stringer 1, throughout Pan 16', Pan 17'	19
	Sp. 10, Stringer 5, 10' from FB 16', Pan 17'	19
	Sp. 10, Stringer 1, at FB 10', Pan 11'	19
	Sp. 10, Stringer 1, at FB 10', Pan 10'	19
	Sp. 10, Stringer 1, at FB 7', Pan 8'	19
	Sp. 10, Stringer 5, 6' from FB 7', Pan 7'	19
	Sp. 10, Stringer 1, 6' from FB 5', Pan 6'	19
	Sp. 10, Stringer 5, at FB 2', Pan 2'	19
730	Sp. 9, Stringer 4, at FB 10, Pan 11	18

REV. 10-28-2020

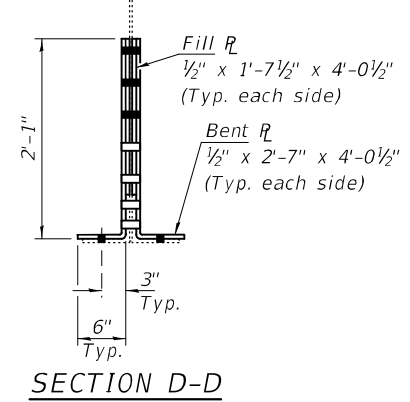
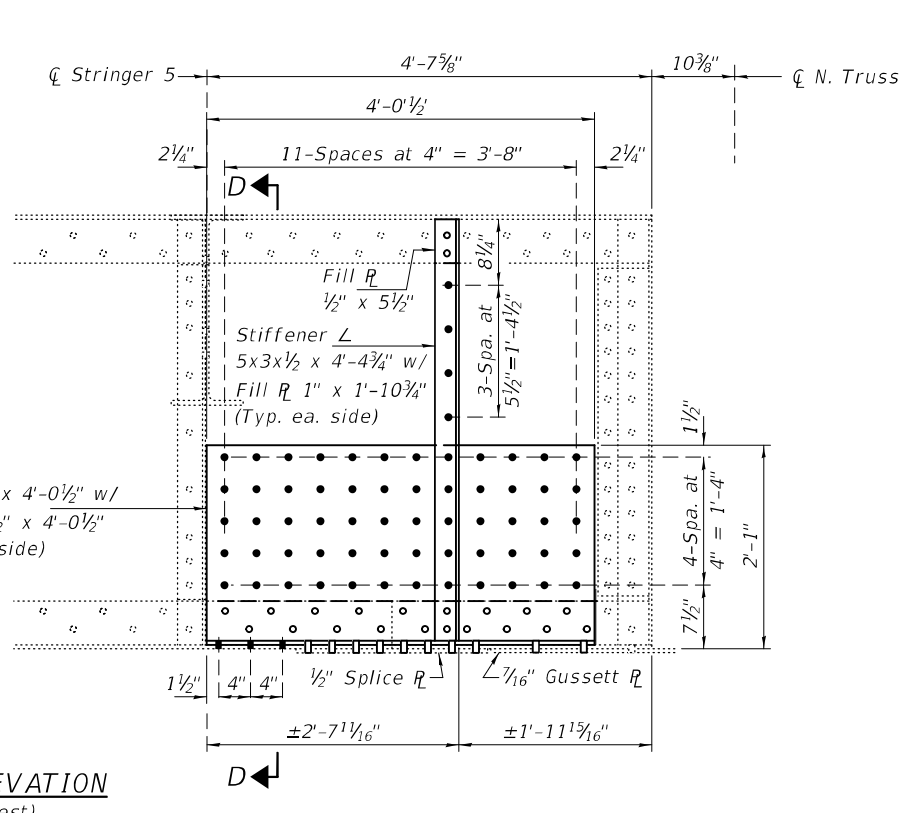
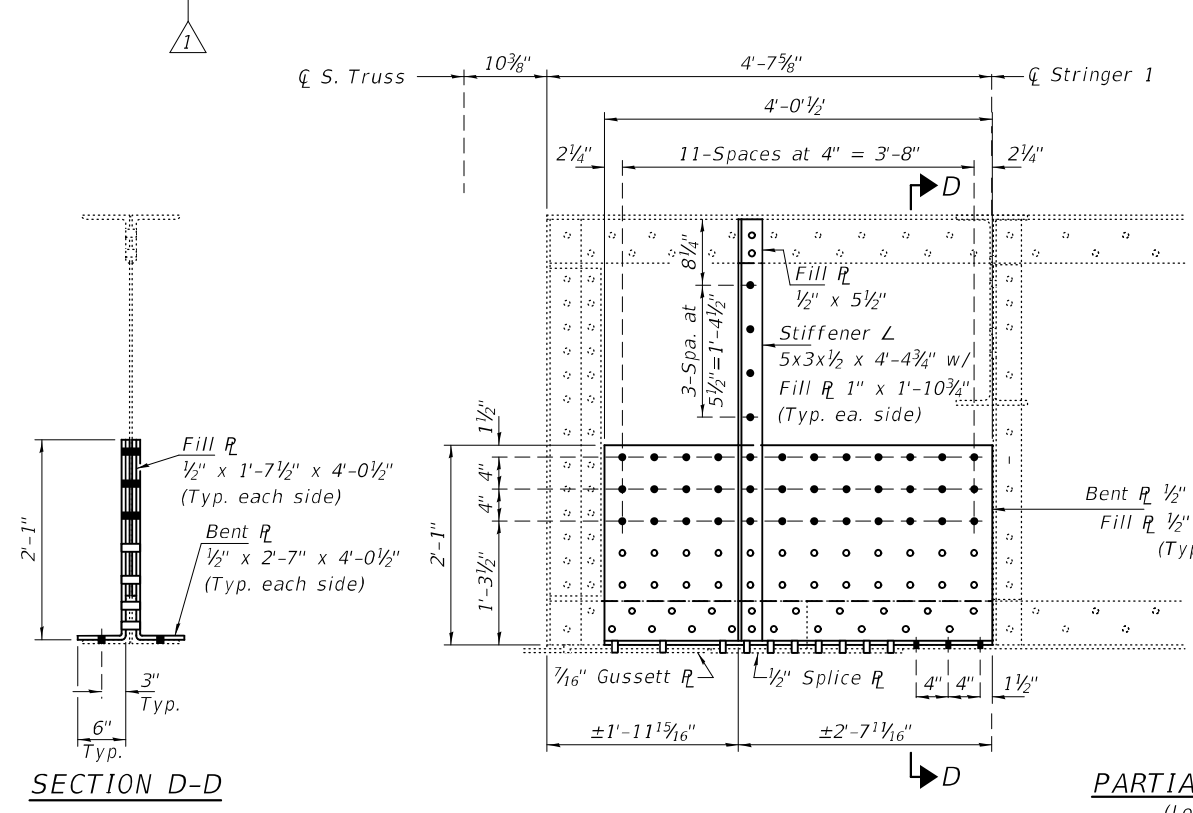
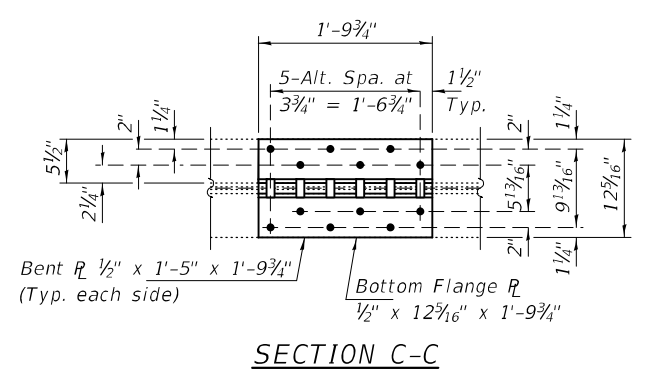
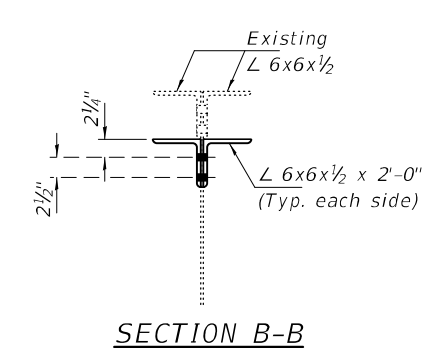
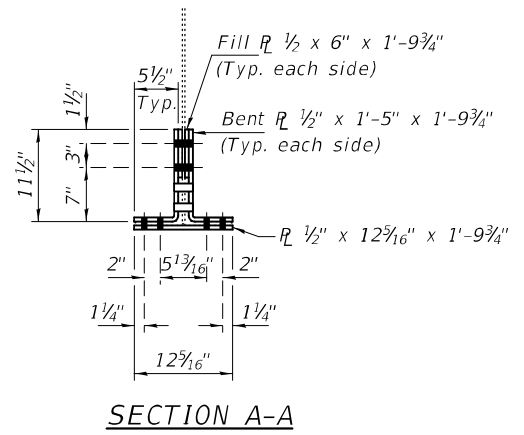
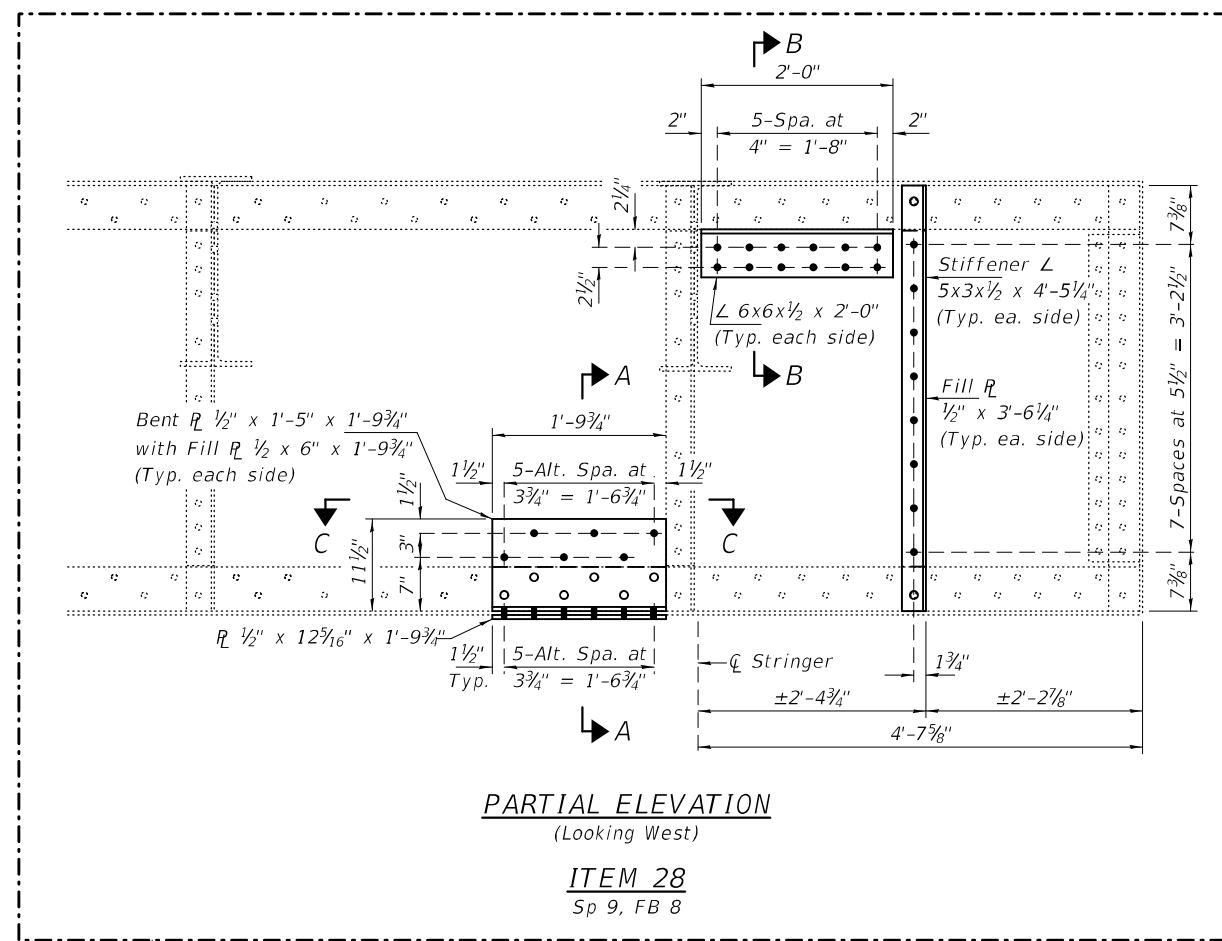
DESIGNED - JSB	EXAMINED - <i>Timothy A. Dill</i>	DATE - OCTOBER 5, 2020
CHECKED - VHV	ENGINEER OF STRUCTURAL SERVICES	
DRAWN - daburdell Steffen	PASSED - <i>Carl Ringer</i>	REVISED 10/27/2020 JSB
CHECKED - JSB VHV	ENGINEER OF BRIDGES AND STRUCTURES	REVISED -

STATE OF ILLINOIS
DEPARTMENT OF TRANSPORTATION

SCOPE OF WORK
SN 001-0019

SHEET NO. 4 OF 34 SHEETS

F.A.P. RTE.	SECTION	COUNTY	TOTAL SHEETS	SHEET NO.
63	(12B),BP,BRR,BJR-1,BDR,L	ADAMS	78	12
CONTRACT NO. 72L58				
ILLINOIS FED. AID PROJECT				

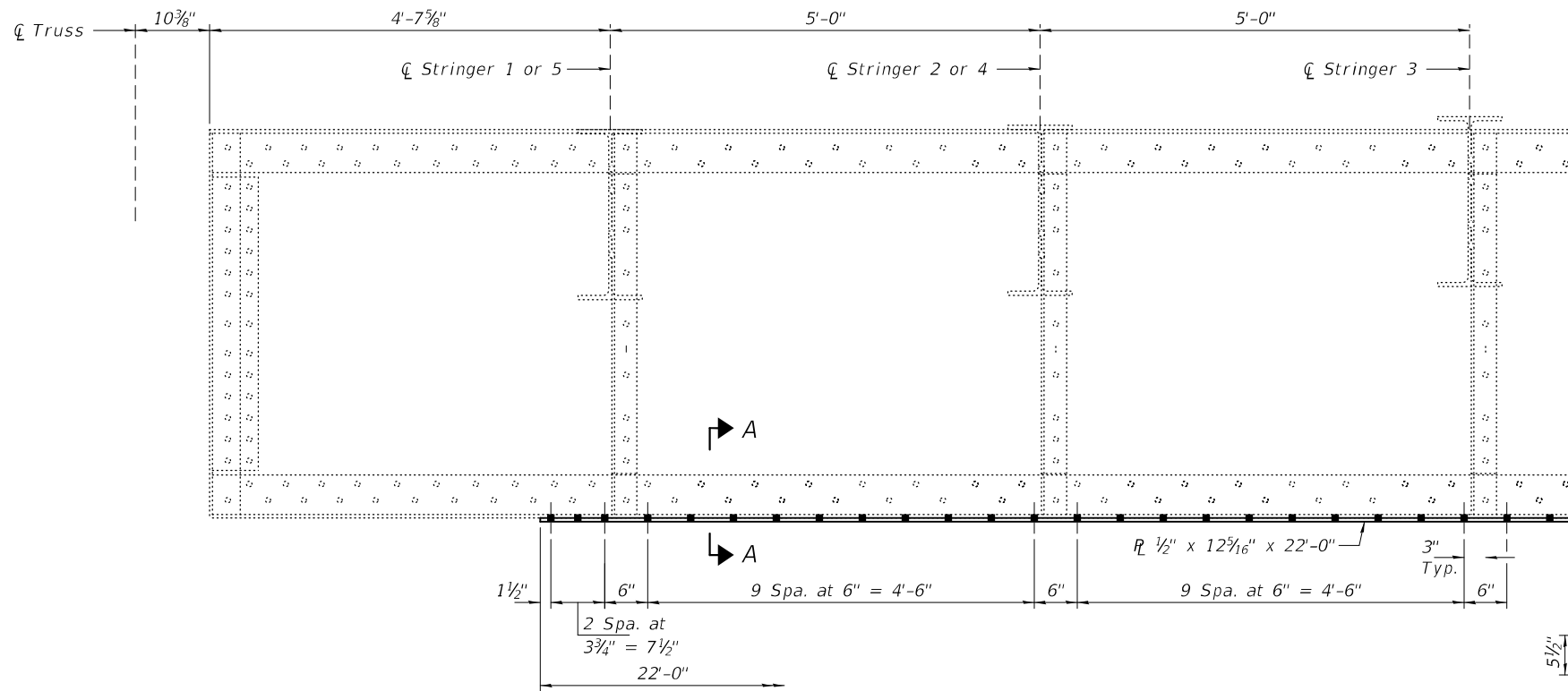


BOLT HOLE LEGEND

- - Holes to be shop drilled.
- - Holes to be field drilled using existing holes as template.

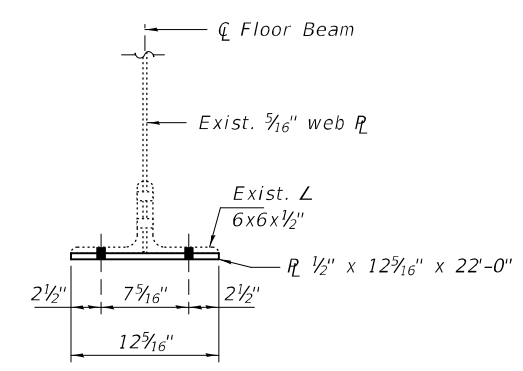
REV. 10-28-2020

DESIGNED - JSB	EXAMINED - <i>Timothy A. Drell</i> ENGINEER OF STRUCTURAL SERVICES	DATE - OCTOBER 5, 2020	STATE OF ILLINOIS DEPARTMENT OF TRANSPORTATION	FLOORBEAM REPAIR DETAILS - SPAN 9 SN 001-0019	F.A.P. RTE. 63	SECTION (12B),BP,BRR,BJR-1,BDR,L	COUNTY ADAMS	TOTAL SHEETS 78	SHEET NO. 22
CHECKED - VHV	PASSED - <i>Carl R. Roper</i> ENGINEER OF BRIDGES AND STRUCTURES	REVISED 10/27/2020 JSB			CONTRACT NO. 72L58				
DRAWN - daburdell Steffen		REVISED -	SHEET NO. 14 OF 34 SHEETS		ILLINOIS FED. AID PROJECT				

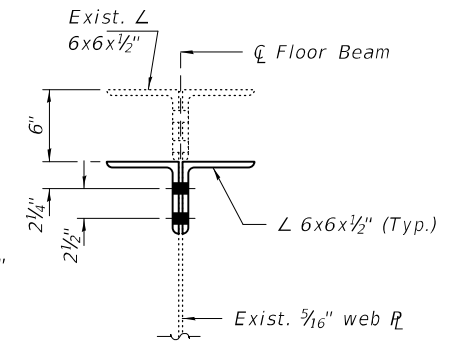


HALF ELEVATION
(Looking East)

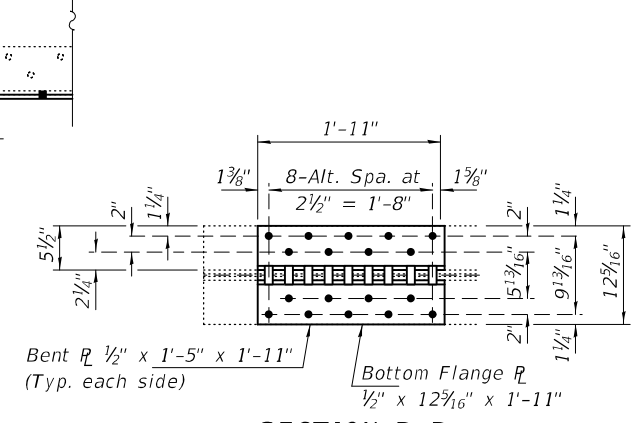
ITEM 103
Sp 9, FB 0



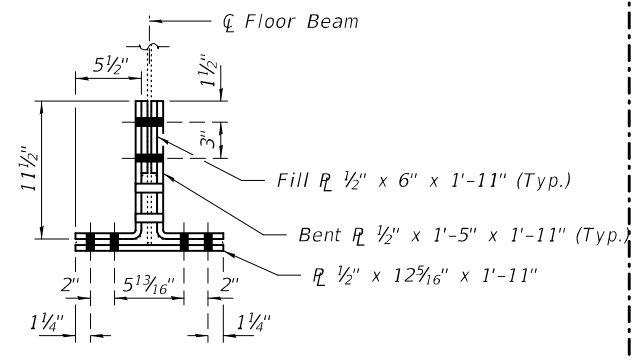
SECTION A-A



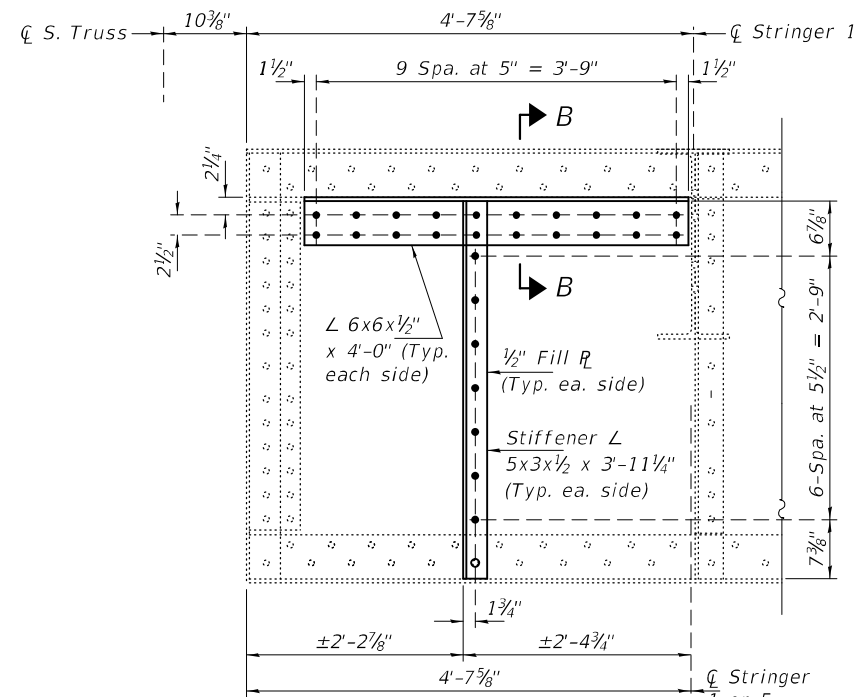
SECTION B-B



SECTION D-D



SECTION C-C

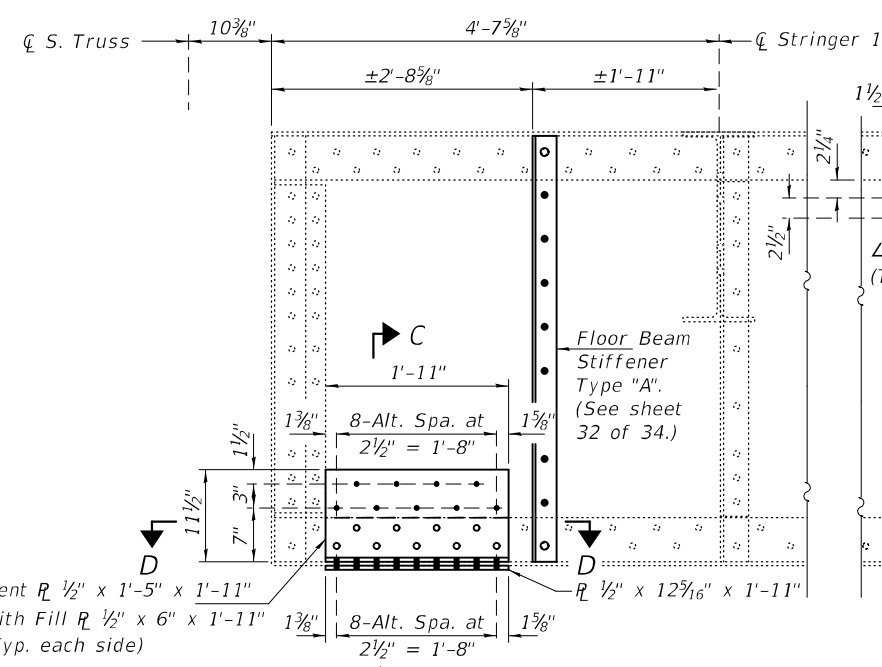


PARTIAL ELEVATION
(Looking West)

ITEM 767
Sp 9, FB 6

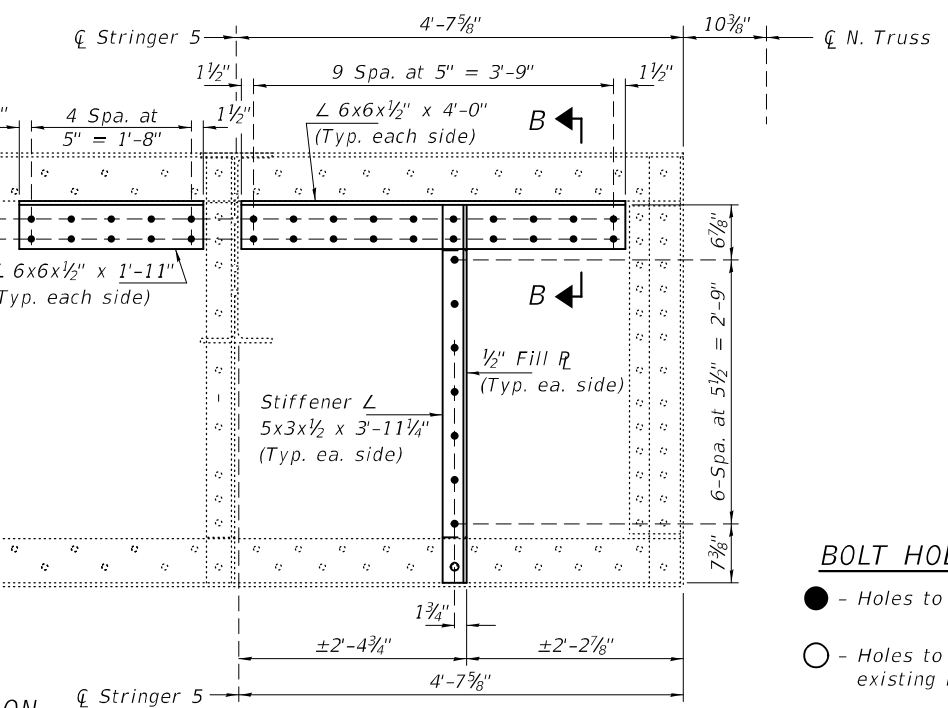
ITEM 47
Sp 10, FB 14

(South end shown, North end typical)



PARTIAL ELEVATION
(Looking West)

ITEM 569
Sp 9, FB 7

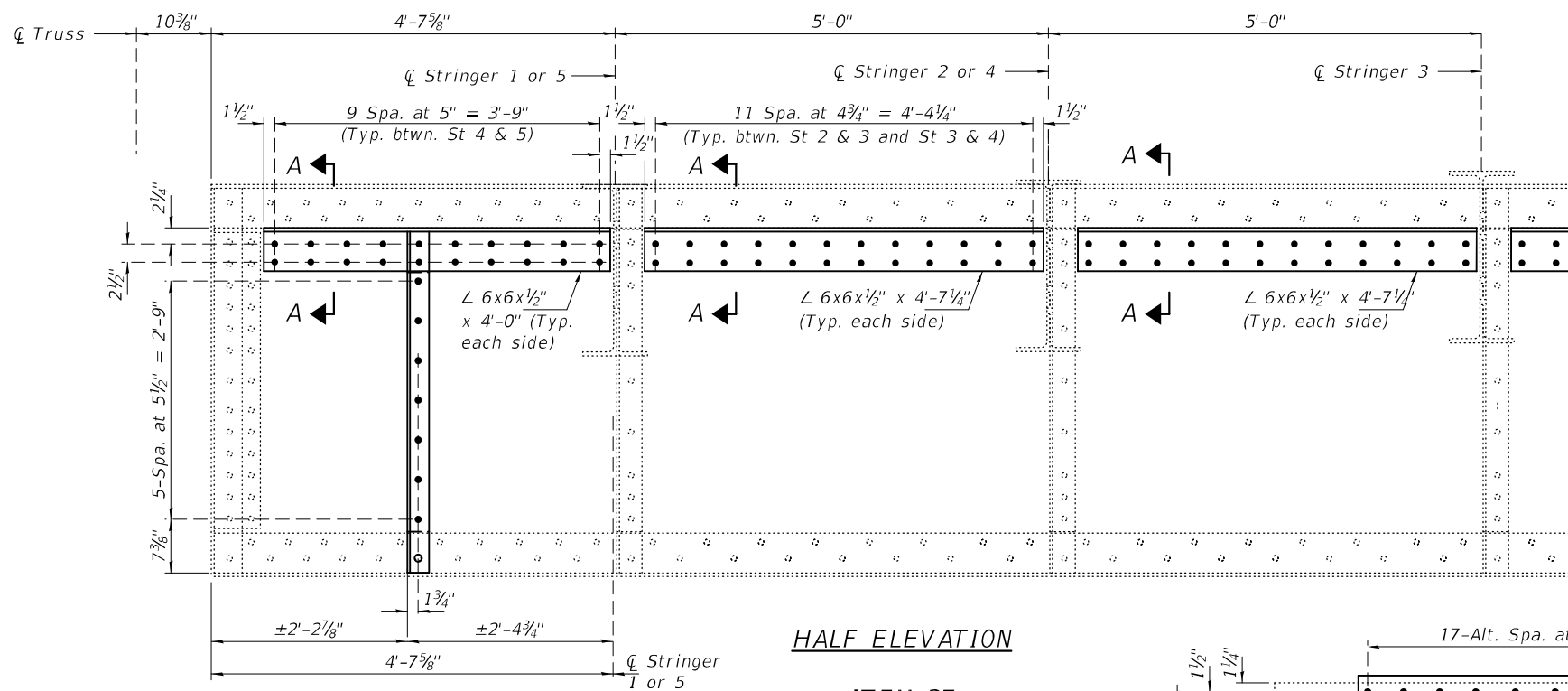


BOLT HOLE LEGEND

- - Holes to be shop drilled.
- - Holes to be field drilled using existing holes as template.

REV. 10-28-2020

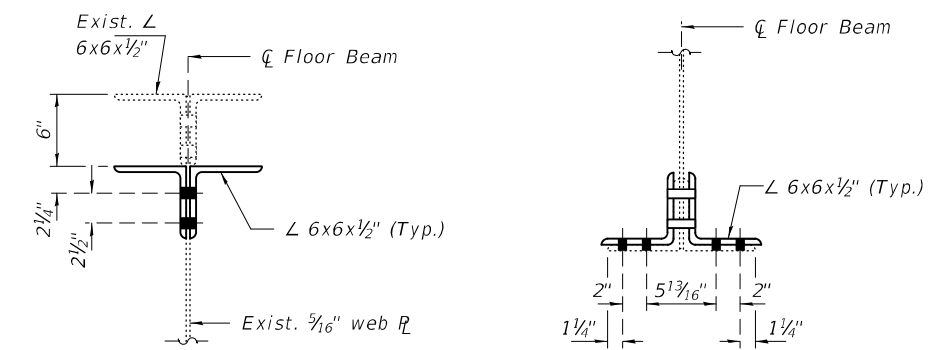
DESIGNED - JSB	EXAMINED - <i>Timothy A. Daulton</i>	DATE - OCTOBER 5, 2020	STATE OF ILLINOIS DEPARTMENT OF TRANSPORTATION	FLOORBEAM REPAIR DETAILS - SPANS 9 & 10 SN 001-0019	F.A.P. RTE. 63	SECTION (12B),BP,BRR,BJR-1,BDR,L	COUNTY ADAMS	TOTAL SHEETS 78	SHEET NO. 23
CHECKED - VHV	PASSED - <i>Carl R. Ringer</i>	REVISED 10/27/2020 JSB			CONTRACT NO. 72L58	ILLINOIS FED. AID PROJECT			
DRAWN - daburdell Steffen	ENGINEER OF BRIDGES AND STRUCTURES	REVISOR -	SHEET NO. 15 OF 34 SHEETS						



HALF ELEVATION

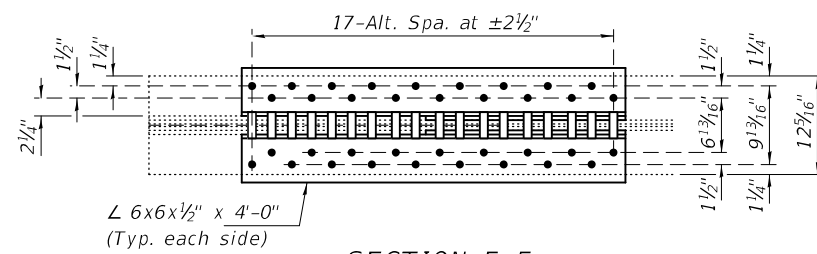
ITEM 37
Sp 9, FB 18

ITEM 50
Sp 10, FB 10'

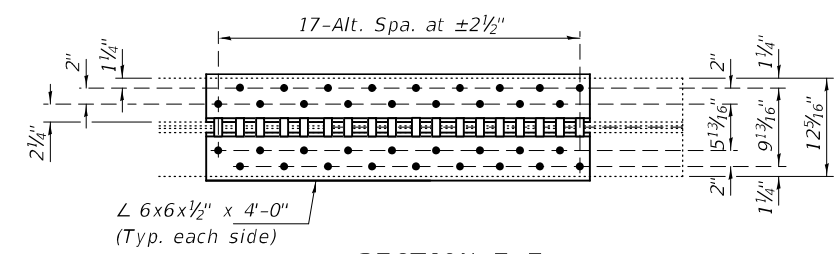


SECTION A-A

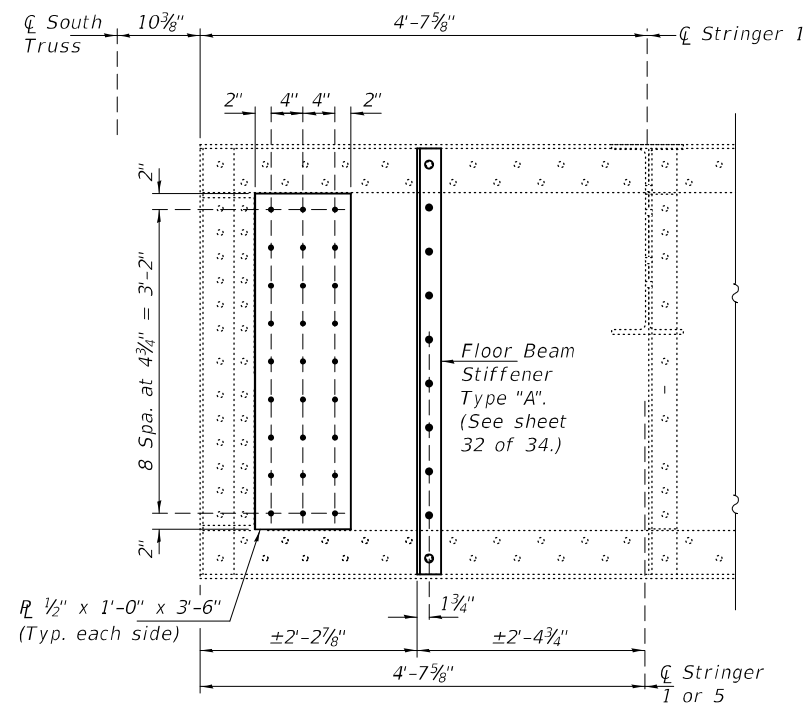
SECTION B-B



SECTION F-F

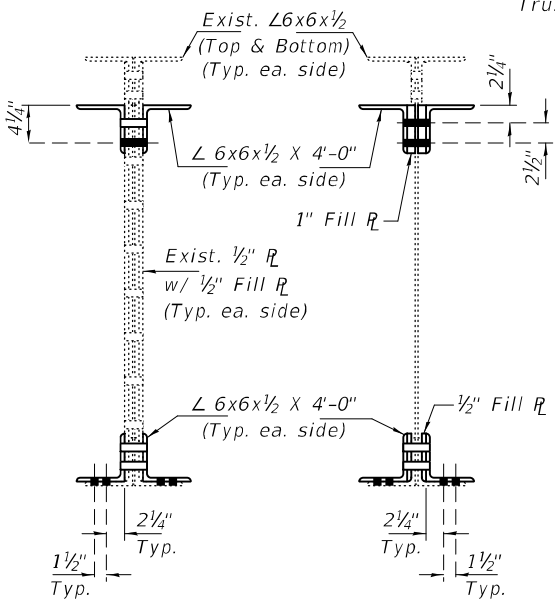


SECTION E-E



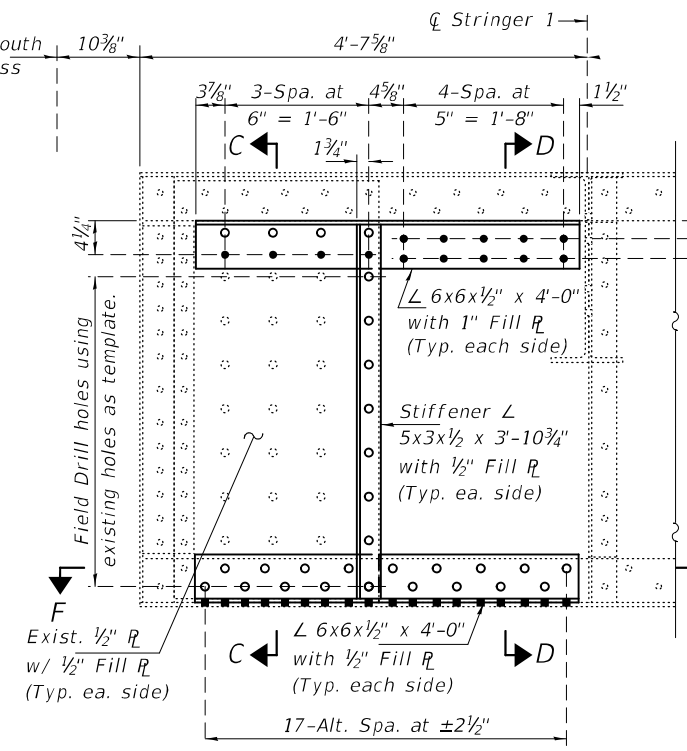
PARTIAL ELEVATION
(Looking West)

ITEM 51
Sp 10, FB 9'
(South end shown, North end typical)



SECTION C-C

SECTION D-D



PARTIAL ELEVATION
(Looking West)

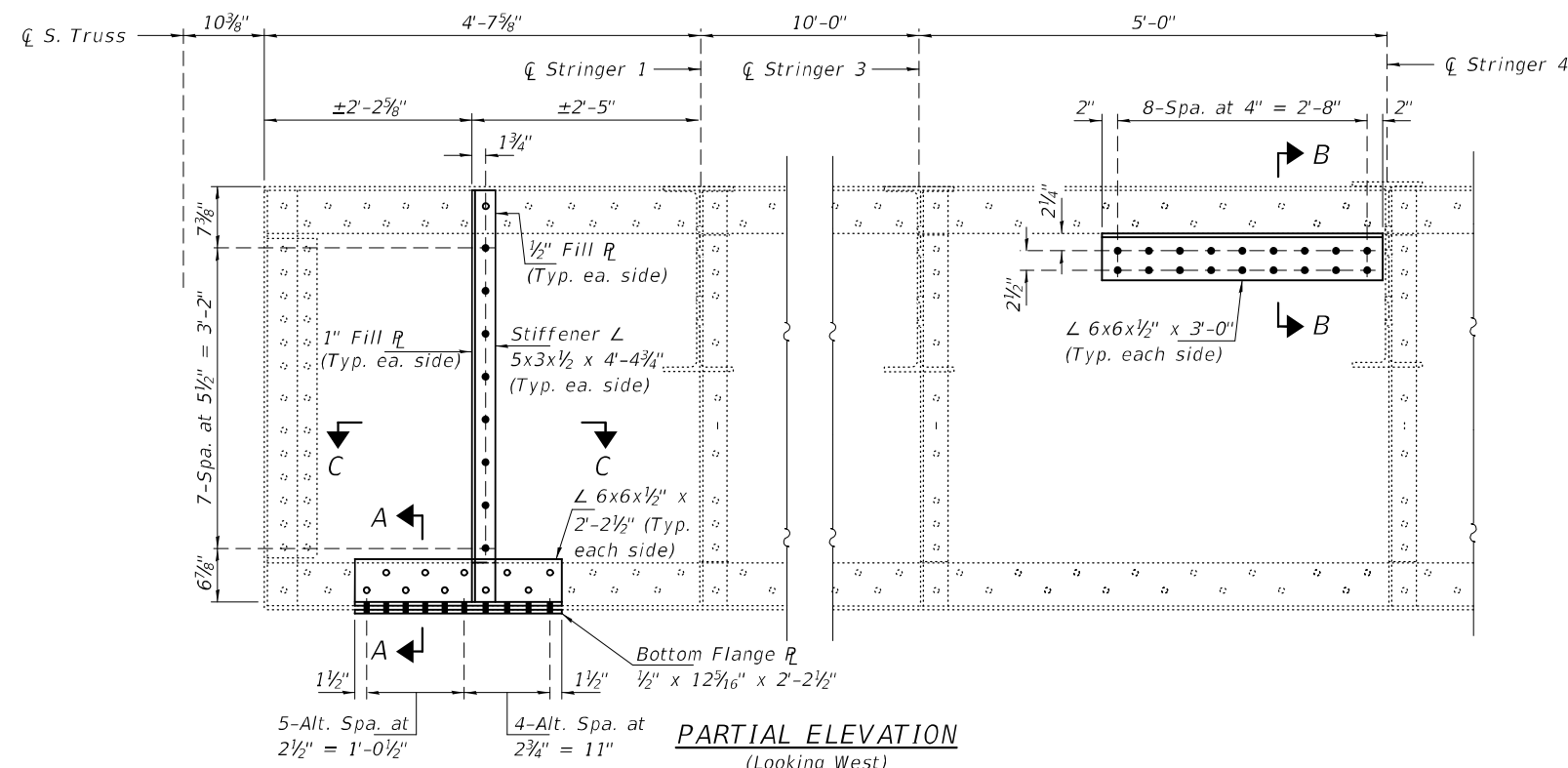
ITEM 217
Sp 9, FB 16

BOLT HOLE LEGEND

- - Holes to be shop drilled.
- - Holes to be field drilled using existing holes as template.

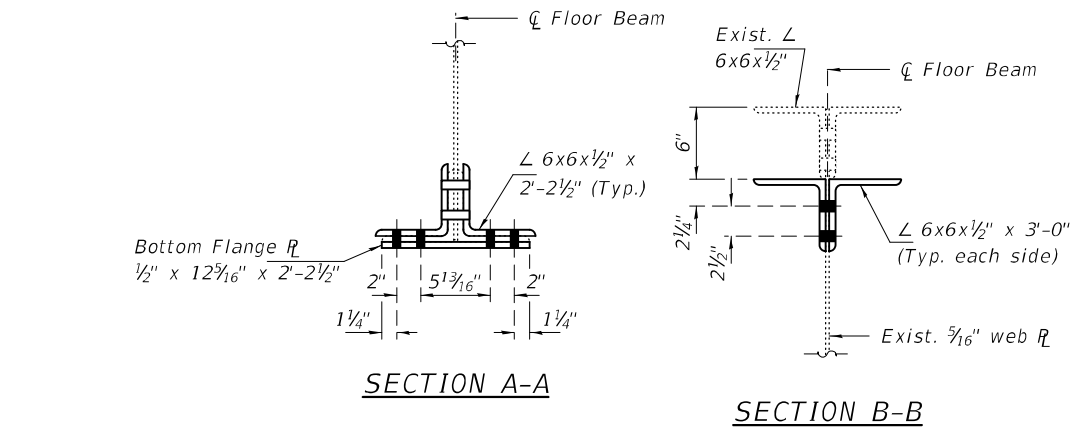
REV. 10-28-2020

DESIGNED - JSB	EXAMINED - <i>Timothy A. Daulton</i>	DATE - OCTOBER 5, 2020	STATE OF ILLINOIS DEPARTMENT OF TRANSPORTATION	FLOORBEAM REPAIR DETAILS - SPANS 9 & 10 SN 001-0019	F.A.P. RTE. 63	SECTION (12B),BP,BRR,BJR-1,BDR,L	COUNTY ADAMS	TOTAL SHEETS 78	SHEET NO. 24
CHECKED - VHV	PASSED - <i>Carl R. Roper</i>	REVISED 10/27/2020 JSB			ILLINOIS	FED. AID PROJECT			
DRAWN - daburdell Steffen	ENGINEER OF BRIDGES AND STRUCTURES	REVISOR -	SHEET NO. 16 OF 34 SHEETS		CONTRACT NO. 72L58				



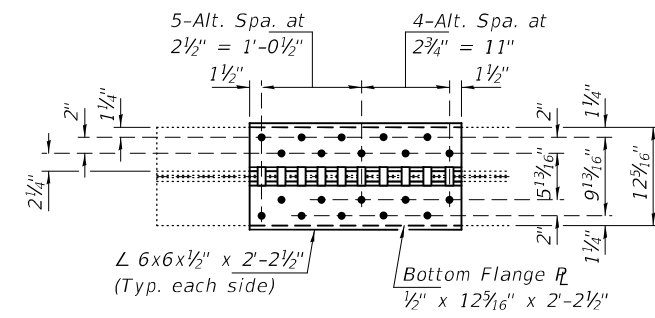
PARTIAL ELEVATION
(Looking West)

ITEM 55
Sp 10, FB 2'

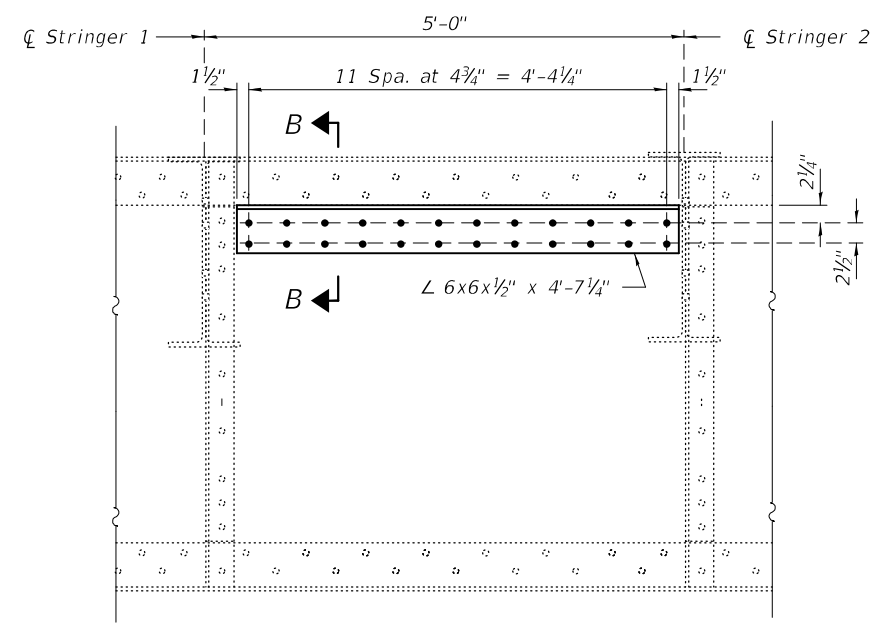


SECTION A-A

SECTION B-B

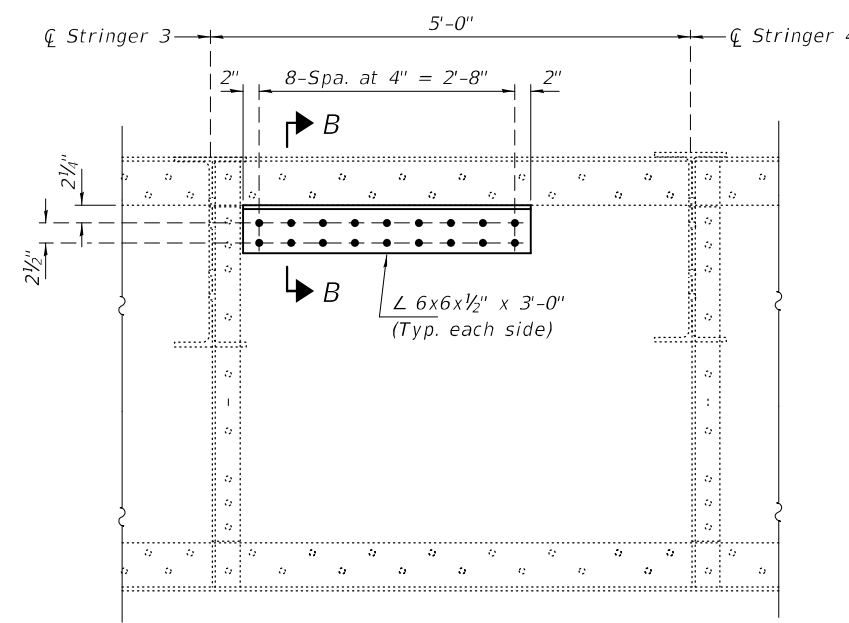


SECTION C-C



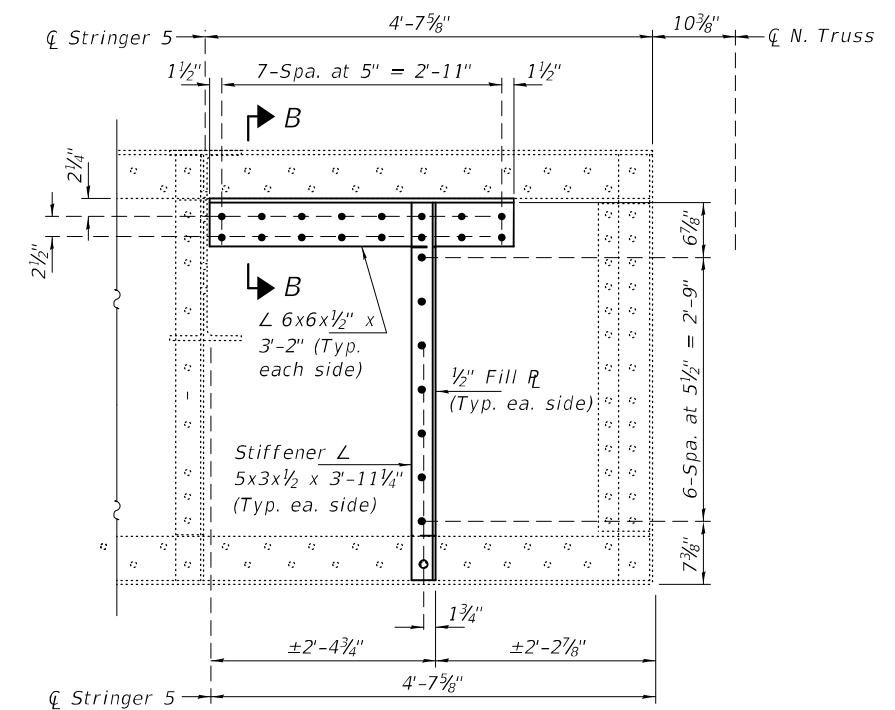
PARTIAL ELEVATION
(Looking West)

ITEM 52
Sp 10, FB 6'



PARTIAL ELEVATION
(Looking West)

ITEM 54
Sp 10, FB 3'



PARTIAL ELEVATION
(Looking West)

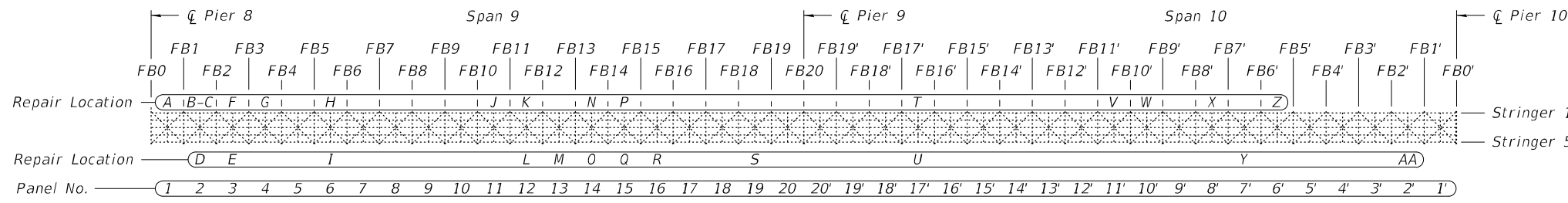
ITEM 647
Sp 10, FB 1'

BOLT HOLE LEGEND

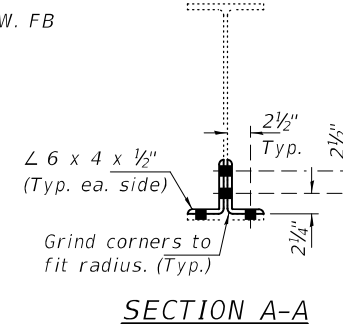
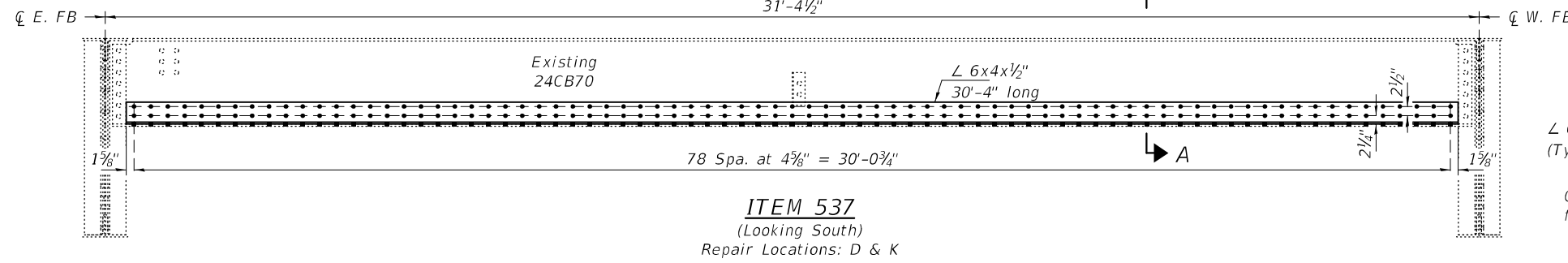
- - Holes to be shop drilled.
- - Holes to be field drilled using existing holes as template.

△ REV. 10-28-2020

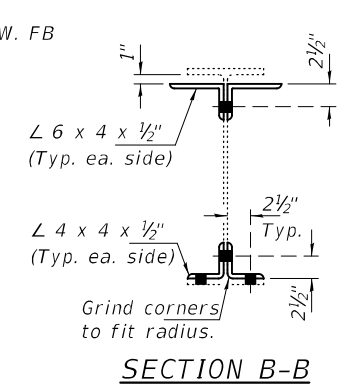
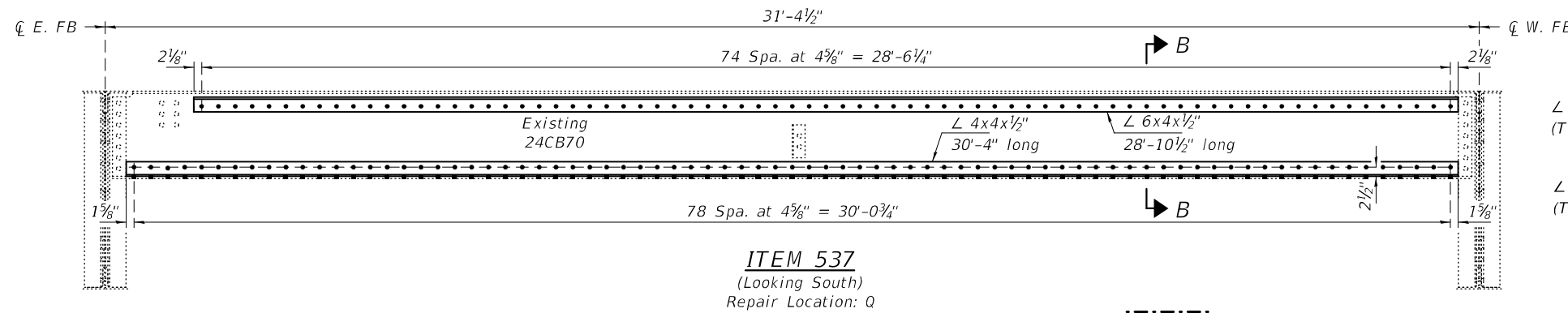
DESIGNED - JSB	EXAMINED - <i>Timothy A. Daburdell</i>	DATE - OCTOBER 5, 2020	STATE OF ILLINOIS DEPARTMENT OF TRANSPORTATION	FLOORBEAM REPAIR DETAILS - SPANS 9 & 10 SN 001-0019	F.A.P. RTE. 63	SECTION (1ZB),BP,BRR,BJR-1,BDR,L	COUNTY ADAMS	TOTAL SHEETS 78	SHEET NO. 25	
CHECKED - VHV	PASSED - <i>Carl R. Steffen</i>	REVISED 10/27/2020 JSB			CONTRACT NO. 72L58					
DRAWN - <i>daburdell Steffen</i>		REVISED -			SHEET NO. 17 OF 34 SHEETS					
CHECKED - JSB VHV	ENGINEER OF BRIDGES AND STRUCTURES				ILLINOIS FED. AID PROJECT					



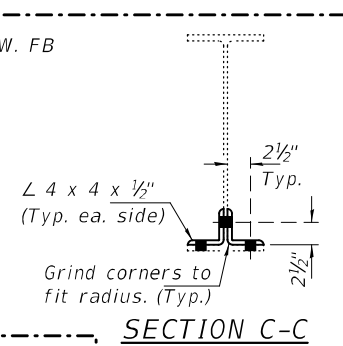
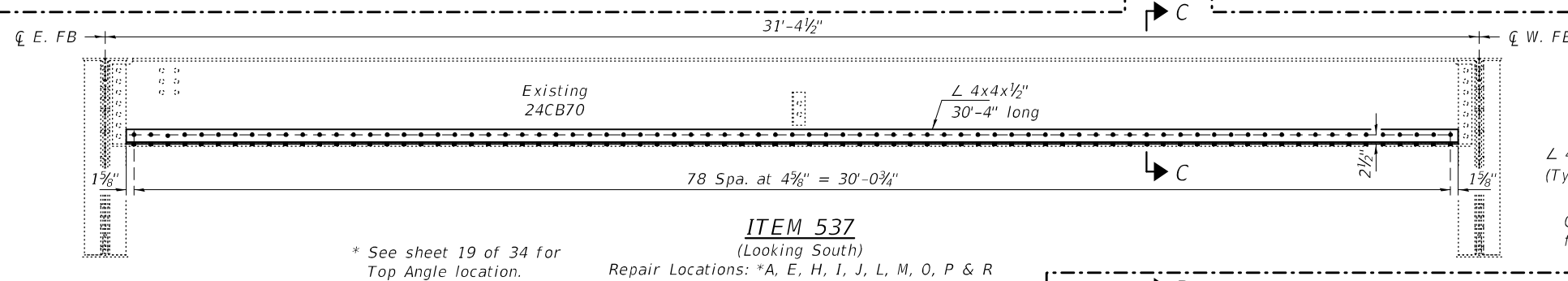
PLAN
(Showing Item 537 repair locations)



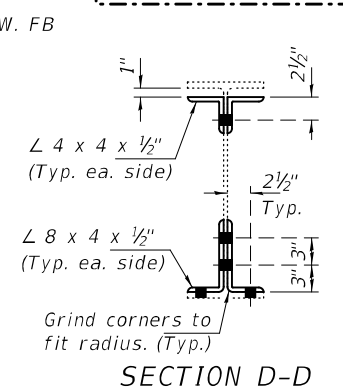
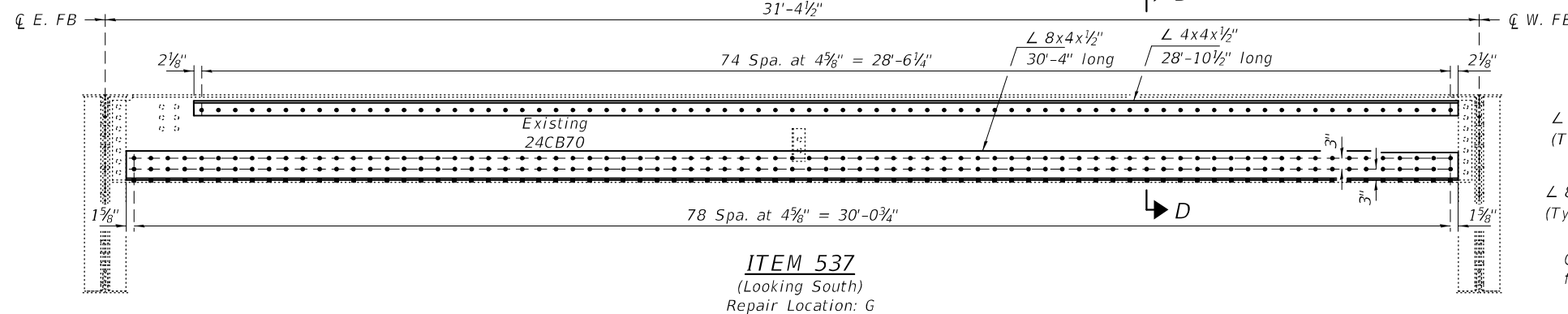
SECTION A-A



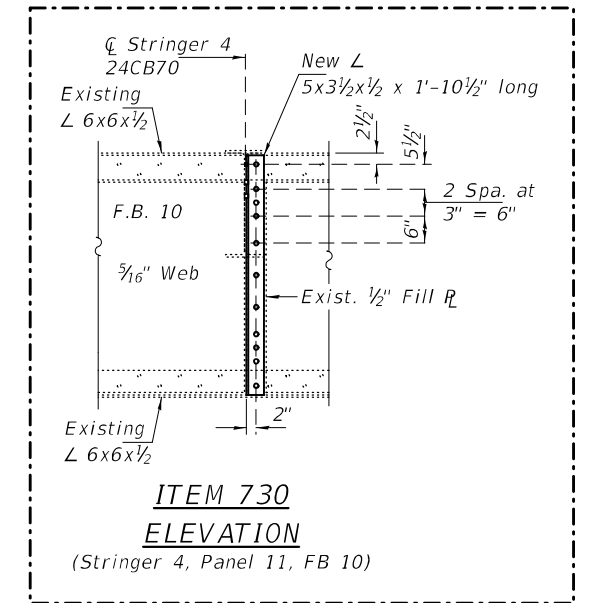
SECTION B-B



SECTION C-C



SECTION D-D



ITEM 730
ELEVATION
(Stringer 4, Panel 11, FB 10)

BOLT HOLE LEGEND

- - Holes to be shop drilled.
- - Holes to be field drilled using existing holes as template.

REV. 10-28-2020

DESIGNED - JSB
CHECKED - VHV
DRAWN - daburdell Steffen
CHECKED - JSB VHV

EXAMINED
PASSED
ENGINEER OF BRIDGES AND STRUCTURES

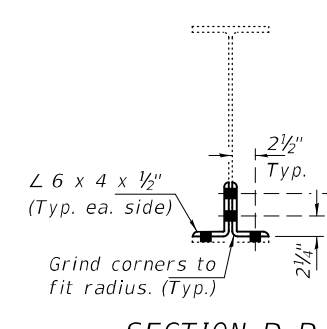
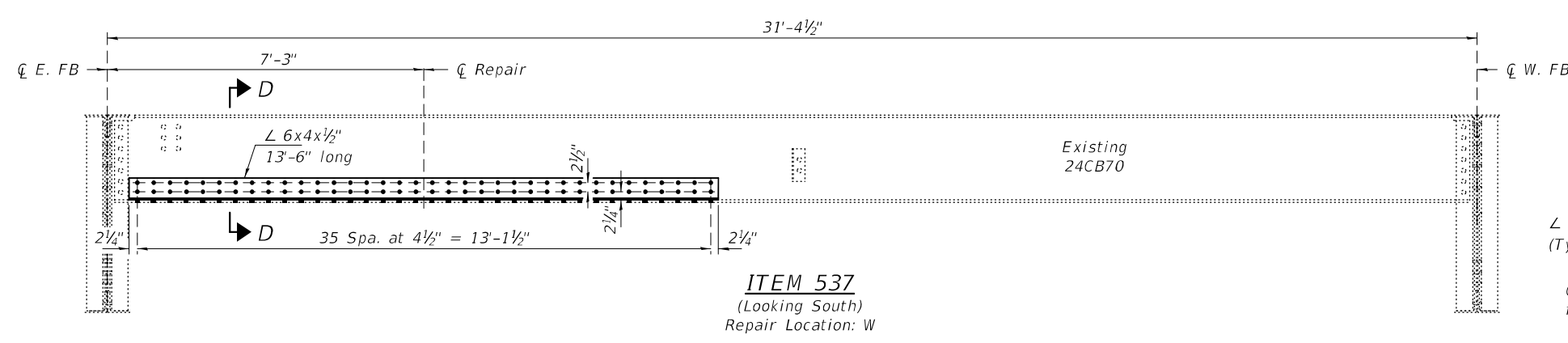
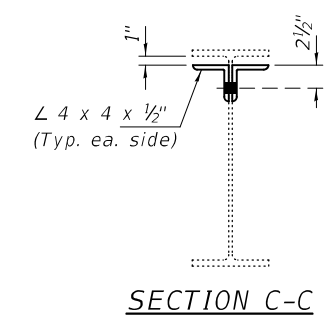
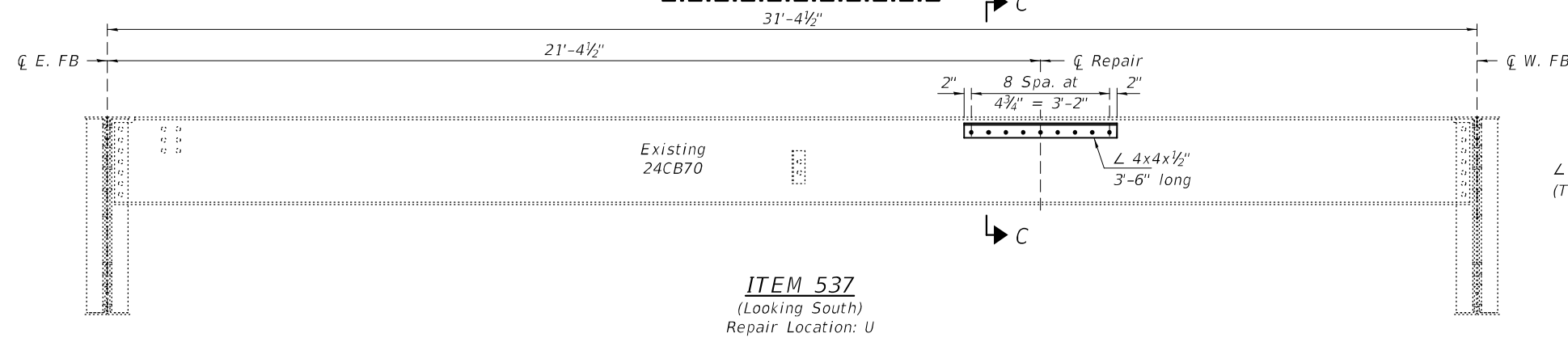
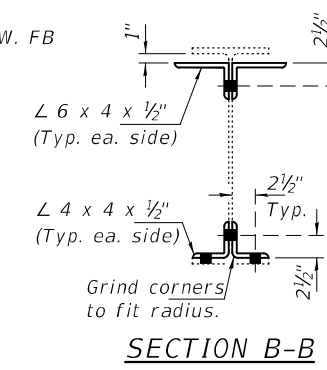
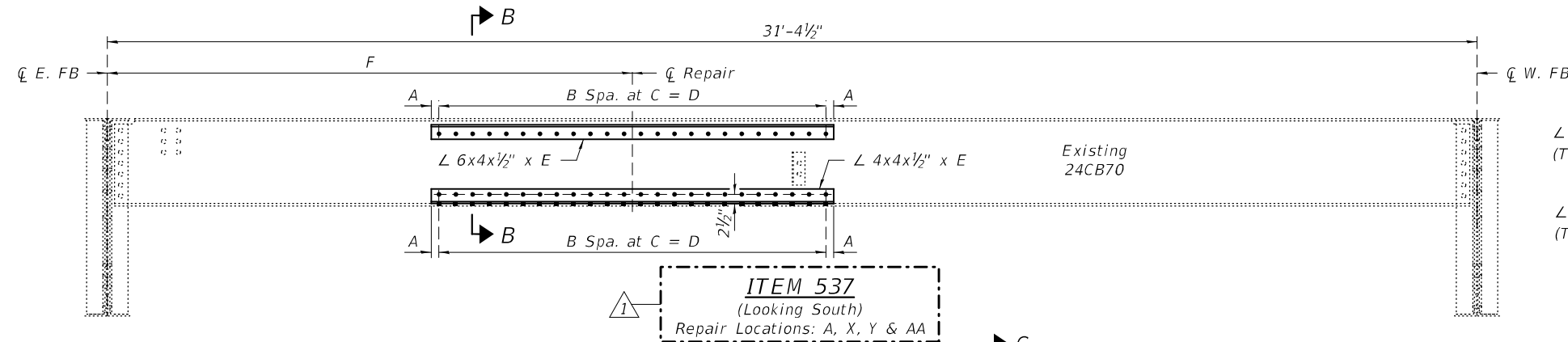
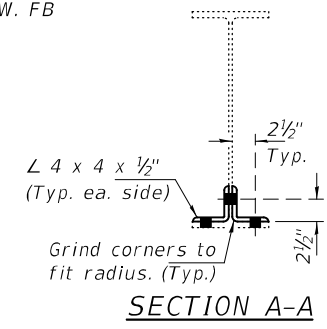
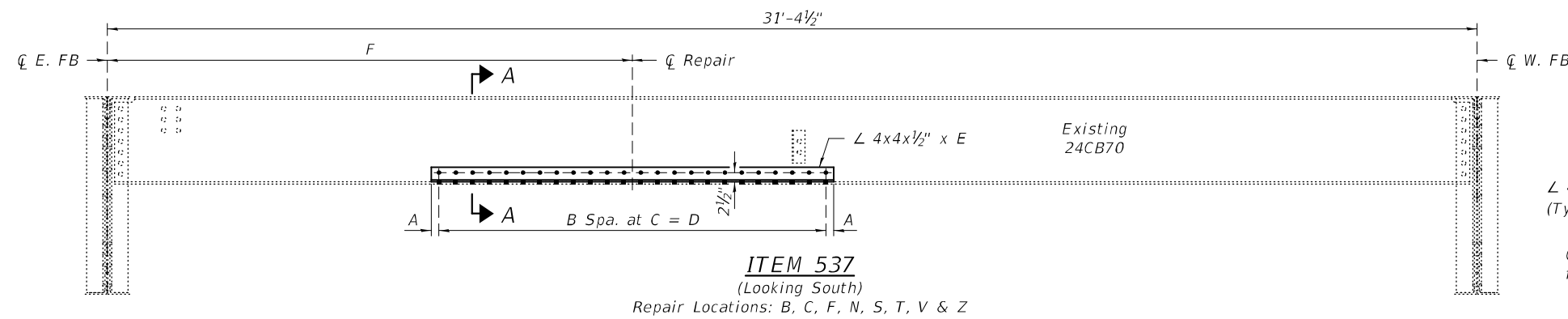
DATE - OCTOBER 5, 2020
REVISED 10/27/2020 JSB
REVISED -

STATE OF ILLINOIS
DEPARTMENT OF TRANSPORTATION

STRINGER REPAIR DETAILS - SPANS 9 & 10
SN 001-0019

SHEET NO. 18 OF 34 SHEETS

F.A.P. RTE.	SECTION	COUNTY	TOTAL SHEETS	SHEET NO.
63	(12B),BP,BRR,BJR-1,BDR,L	ADAMS	78	26
CONTRACT NO. 72L58				
ILLINOIS FED. AID PROJECT				



Repair Location	L Length E	A	B	C	D	F
** A	2'-6"	2 1/2"	5	5"	2'-1"	21'-4 1/2"
B	5'-6"	2 1/8"	13	4 3/4"	5'-1 3/4"	5'-0"
C	2'-6"	2 1/2"	5	5"	2'-1"	23'-4 1/2"
F	5'-6"	2 1/8"	13	4 3/4"	5'-1 3/4"	23'-4 1/2"
N	8'-6"	1 1/2"	22	4 1/2"	8'-3"	23'-4 1/2"
S	11'-6"	1 1/2"	30	4 1/2"	11'-3"	6'-3"
T	4'-0"	1 1/2"	10	4 1/2"	3'-9"	21'-4 1/2"
V	3'-6"	2"	8	4 3/4"	3'-2"	29'-1 1/2"
* X	7'-6"	2 1/4"	18	4 3/4"	7'-1 1/2"	27'-1 1/2"
* Y	3'-6"	2"	8	4 3/4"	3'-2"	6'-0"
Z	7'-6"	2 1/4"	18	4 3/4"	7'-1 1/2"	25'-4 1/2"
* AA	2'-6"	2 1/2"	5	5"	2'-1"	1'-9"
-	-	-	-	-	-	-

Note:
All dimensions are typical except as noted.
* Top and Bottom angles.
** Top angle only.

BOLT HOLE LEGEND

- - Holes to be shop drilled.
- - Holes to be field drilled using existing holes as template.

REV. 10-28-2020

DESIGNED - JSB
CHECKED - VHV
DRAWN - daburdell Steffen
CHECKED - JSB VHV

EXAMINED
PASSED

Timothy A. Daburdell
ENGINEER OF STRUCTURAL SERVICES

Carl Steffen
ENGINEER OF BRIDGES AND STRUCTURES

DATE - OCTOBER 5, 2020

REVISED 10/27/2020 JSB

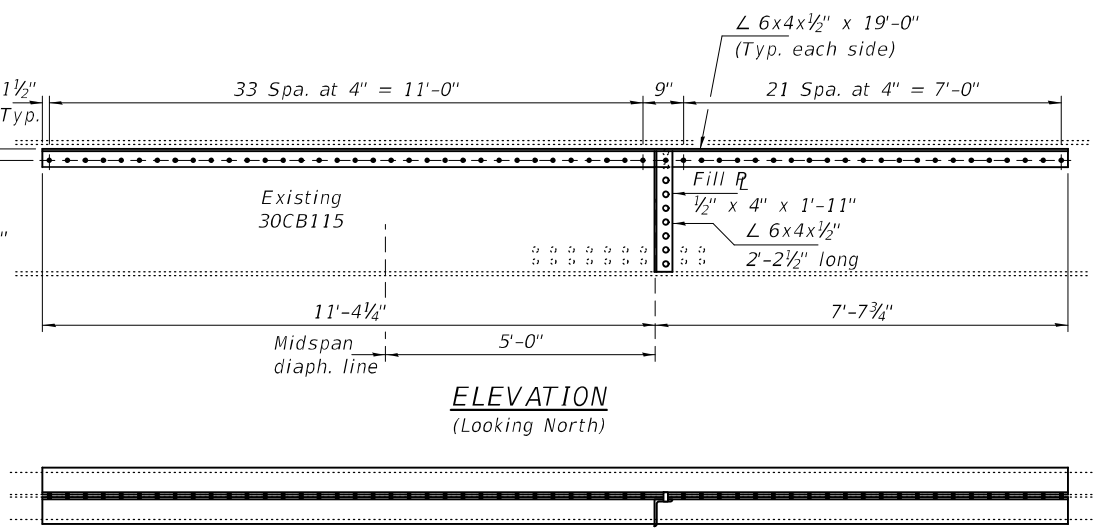
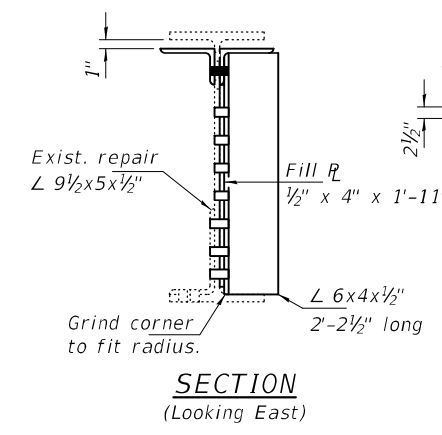
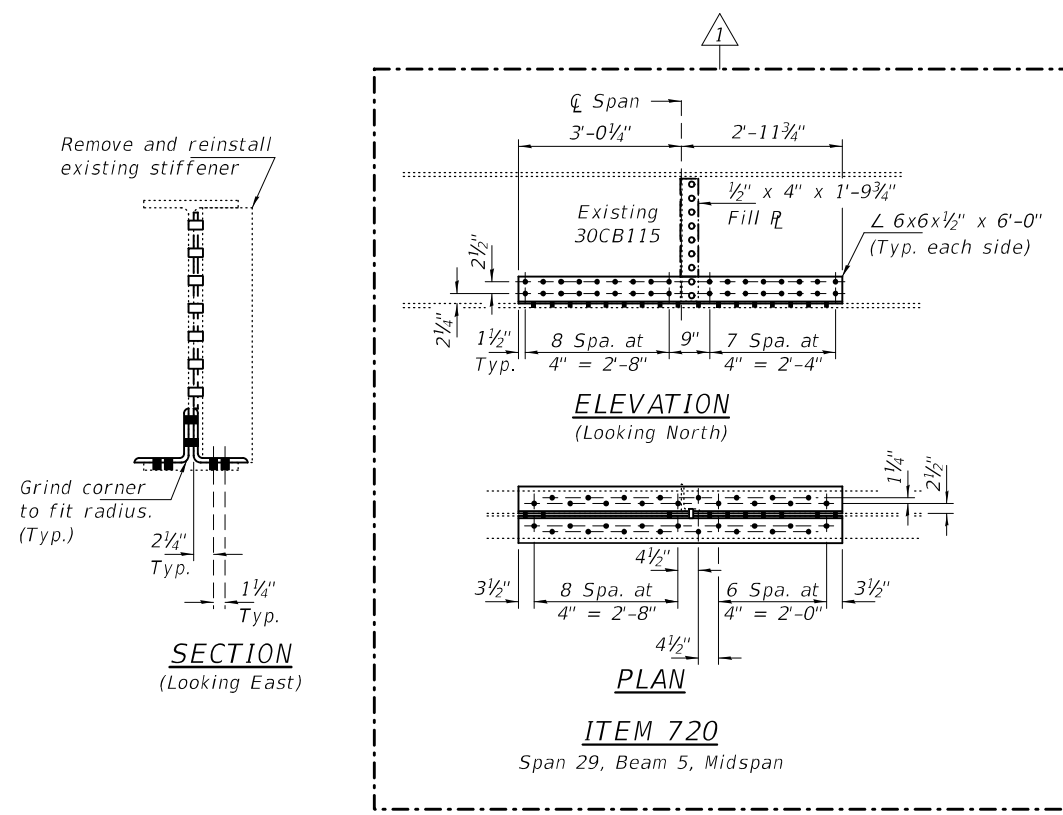
REVISED -

STATE OF ILLINOIS
DEPARTMENT OF TRANSPORTATION

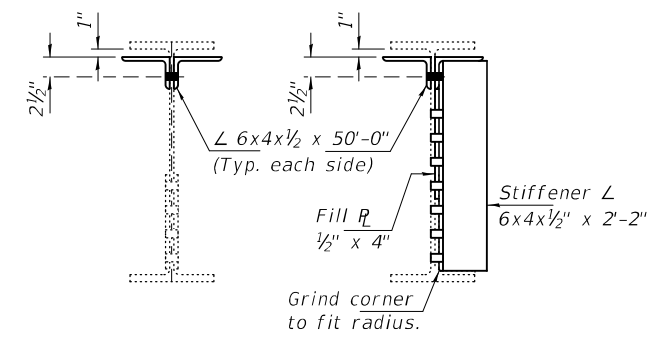
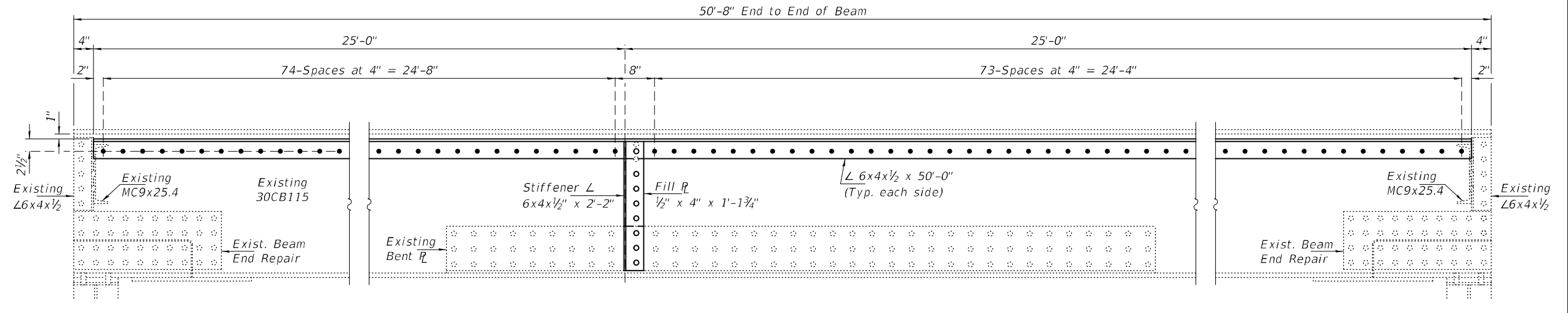
STRINGER REPAIR DETAILS - SPANS 9 & 10
SN 001-0019

F.A.P. RTE.	SECTION	COUNTY	TOTAL SHEETS	SHEET NO.
63	(1ZB),BP,BRR,BJR-1,BDR,L	ADAMS	78	27
CONTRACT NO. 72L58				
ILLINOIS FED. AID PROJECT				

SHEET NO. 19 OF 34 SHEETS



PLAN
ITEM 419
Span 30, Beam 1, Midspan



SECTION
SECTION AT MID-SPAN
ITEM 420
Span 31, Beam 5

BOLT HOLE LEGEND
● - Holes to be shop drilled.
○ - Holes to be field drilled using existing holes as template.

REV. 10-28-2020

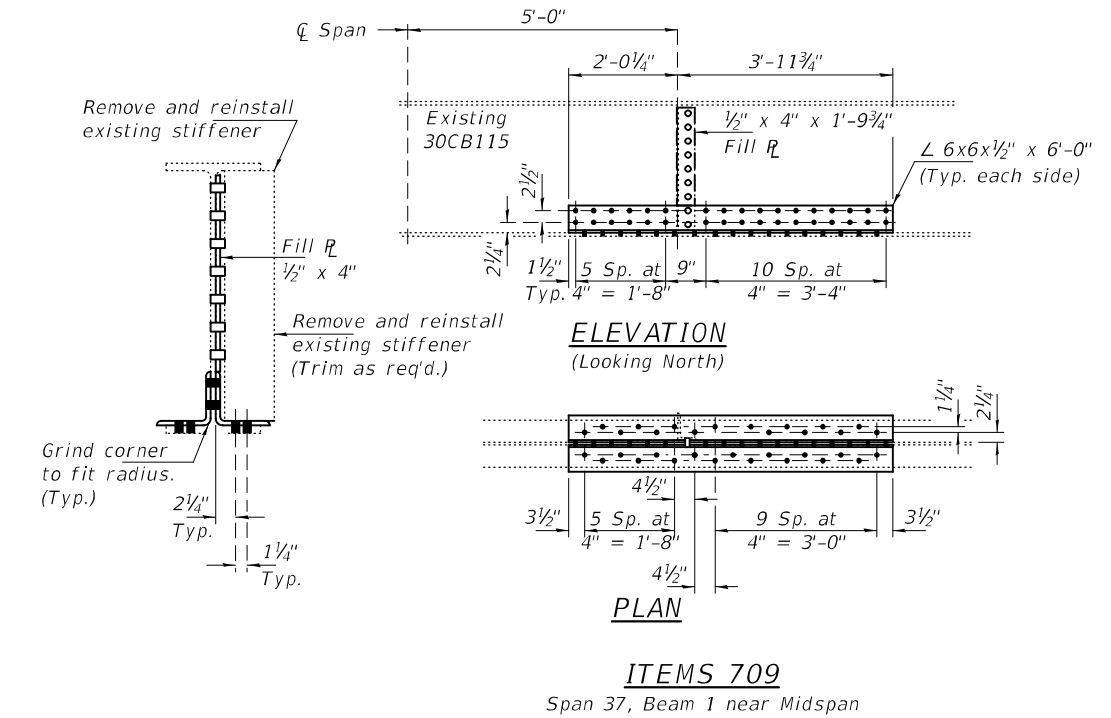
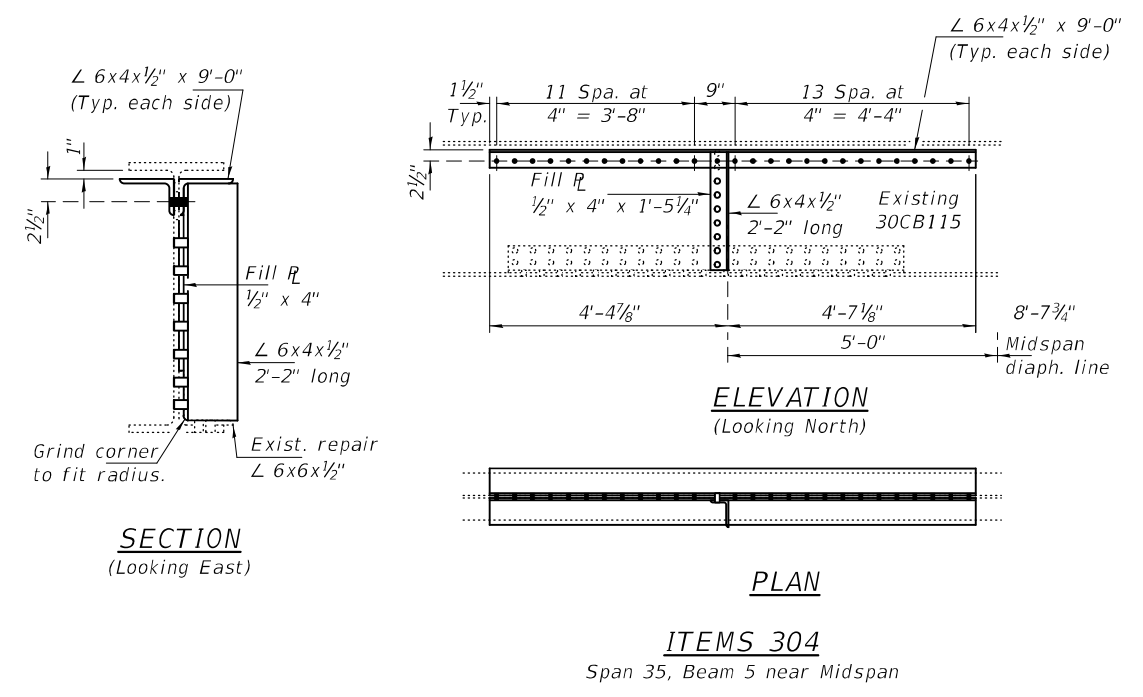
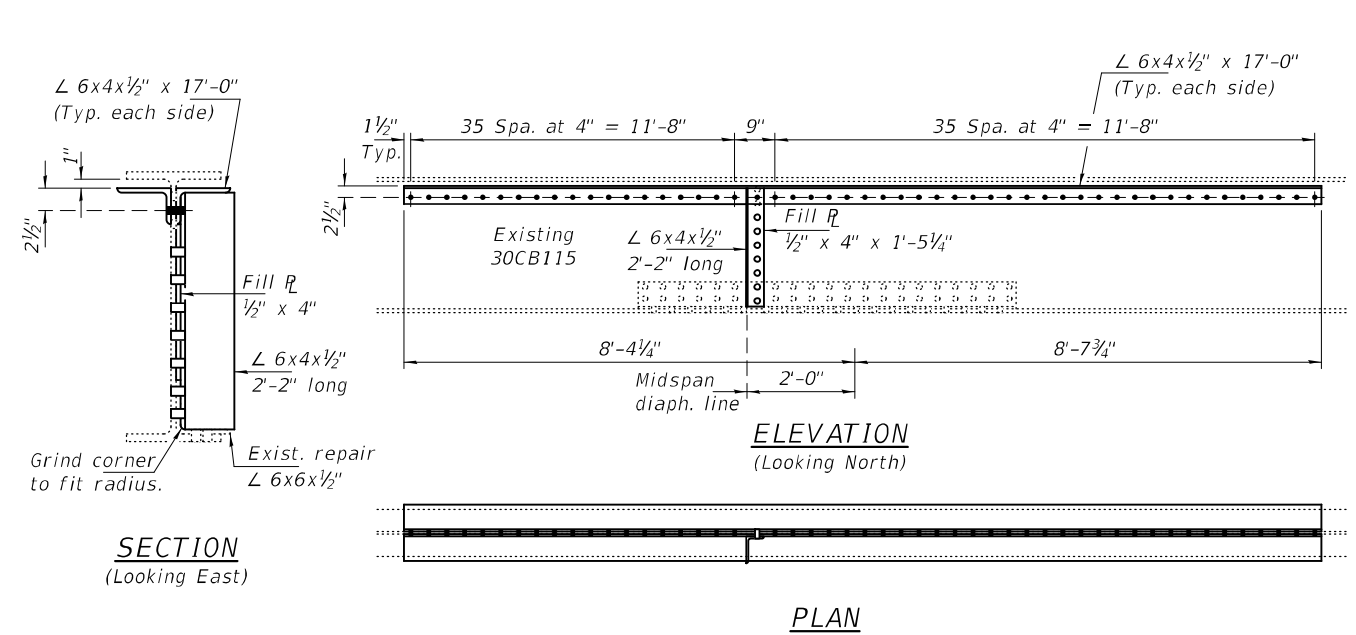
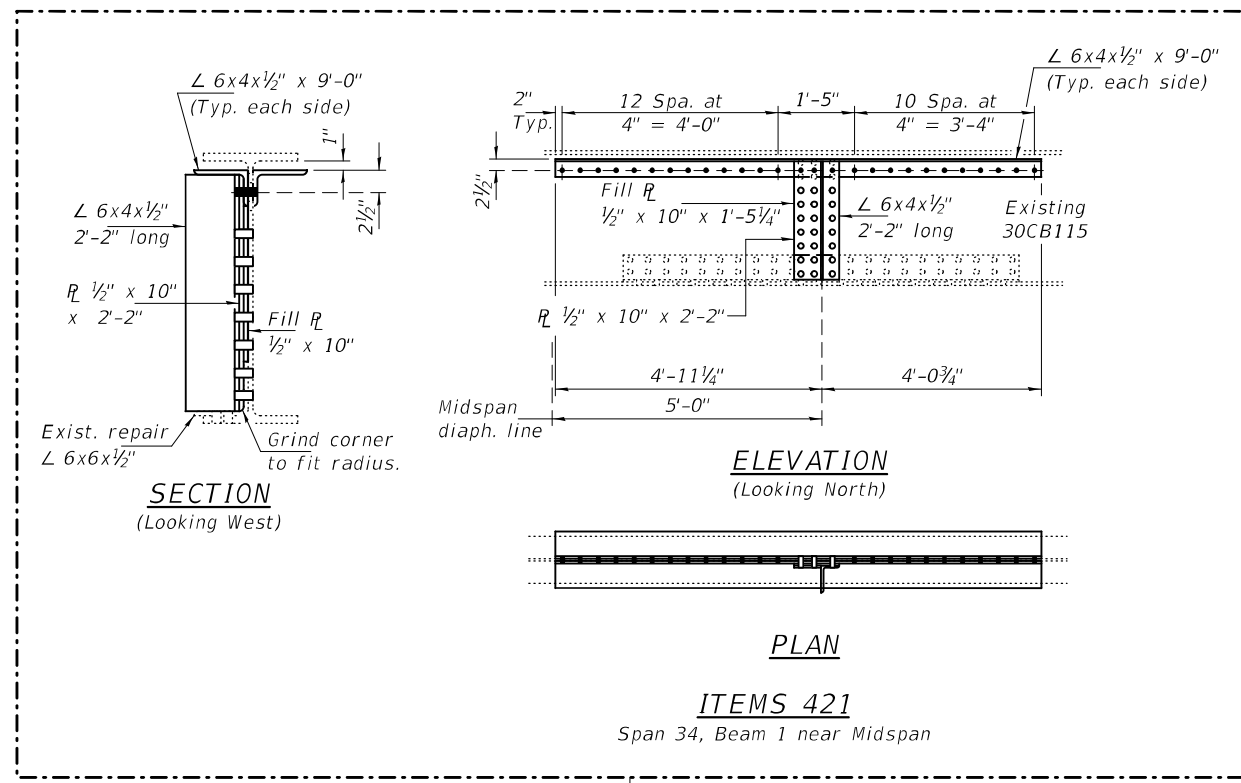
DESIGNED - JSB	EXAMINED - <i>Timothy A. Daburdell</i>	DATE - OCTOBER 5, 2020
CHECKED - VHV	ENGINEER OF STRUCTURAL SERVICES	
DRAWN - <i>daburdell Steffen</i>	PASSED - <i>Carl Ruyter</i>	REVISED 10/27/2020 JSB
CHECKED - JSB VHV	ENGINEER OF BRIDGES AND STRUCTURES	REVISED -

STATE OF ILLINOIS
DEPARTMENT OF TRANSPORTATION

BEAM REPAIR DETAILS - SPANS 29 THRU 31
SN 001-0019

F.A.P. RTE.	SECTION	COUNTY	TOTAL SHEETS	SHEET NO.
63	(1ZB),BP,BRR,BJR-1,BDR,L	ADAMS	78	34
CONTRACT NO. 72L58				
ILLINOIS FED. AID PROJECT				

SHEET NO. 26 OF 34 SHEETS



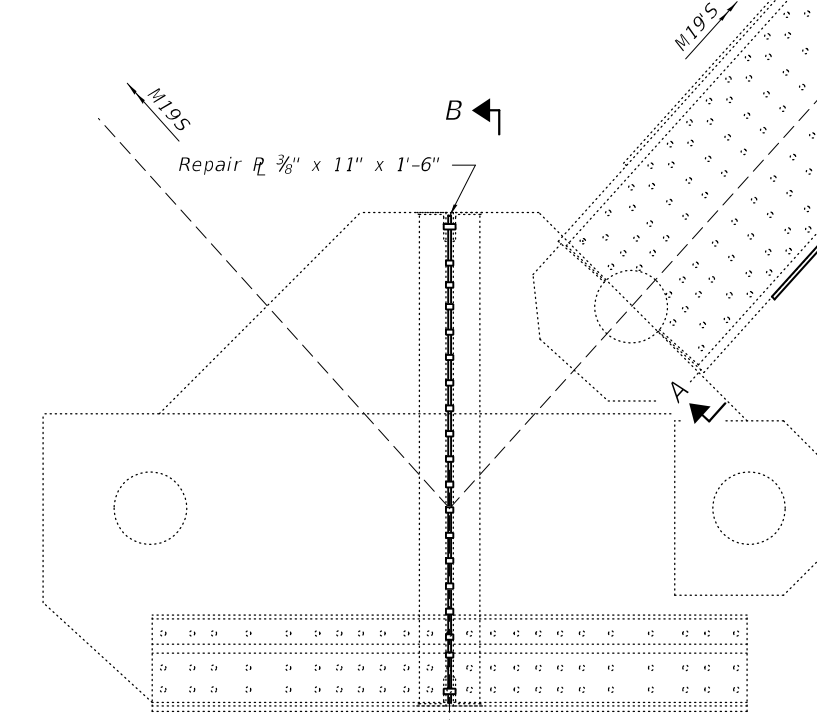
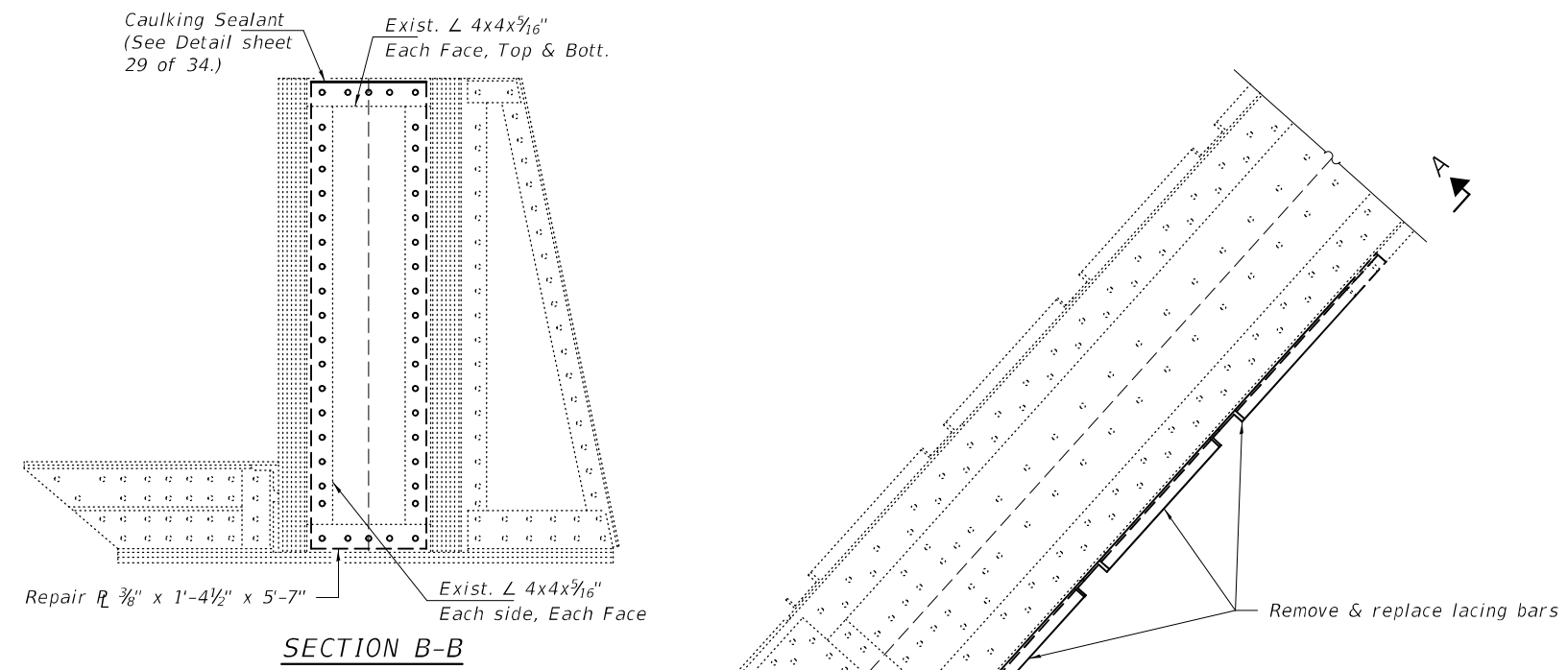
BOLT HOLE LEGEND

● - Holes to be shop drilled.

○ - Holes to be field drilled using existing holes as template.

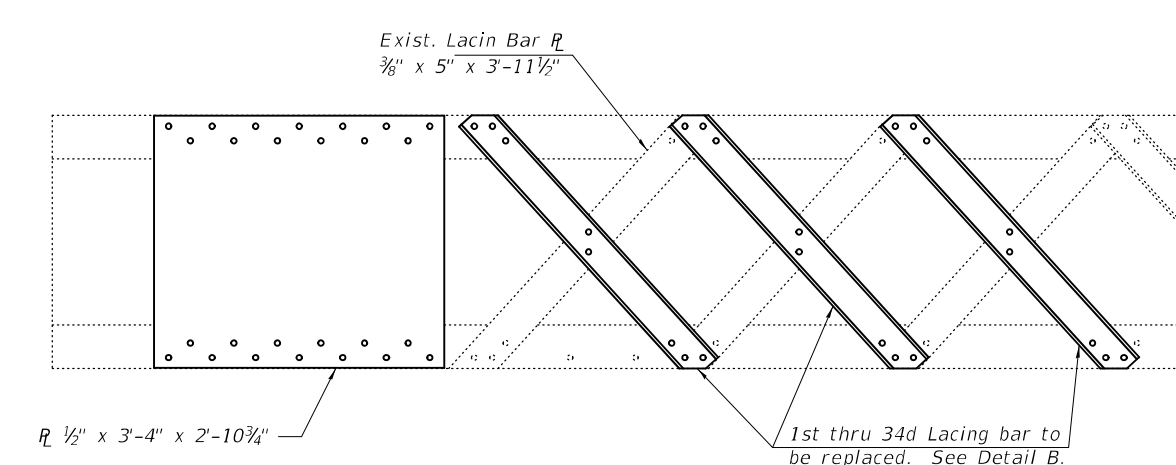
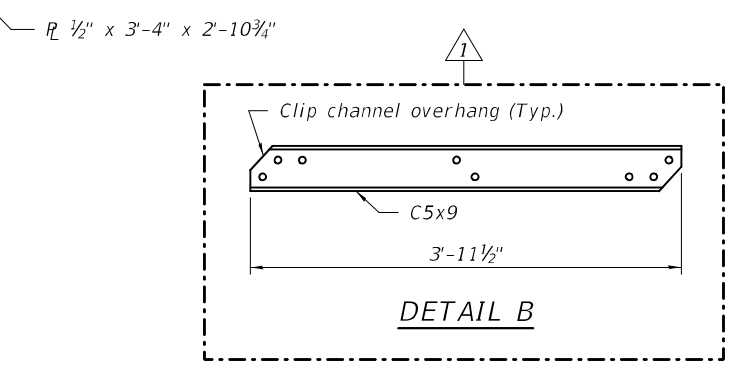
REV. 10-28-2020

DESIGNED - JSB	EXAMINED - <i>Timothy A. Doolittle</i>	DATE - OCTOBER 5, 2020	STATE OF ILLINOIS DEPARTMENT OF TRANSPORTATION	BEAM REPAIR DETAILS - SPANS 34, 35 & 37 SN 001-0019	F.A.P. RTE. 63	SECTION (1ZB),BP,BRR,BJR-1,BDR,L	COUNTY ADAMS	TOTAL SHEETS 78	SHEET NO. 36	
CHECKED - VHV	PASSED - <i>Carl R. Steffen</i>	REVISED 10/27/2020 JSB			CONTRACT NO. 72L58					
DRAWN - daburdell Steffen		REVISED -			SHEET NO. 28 OF 34 SHEETS					
CHECKED - JSB VHV	ENGINEER OF BRIDGES AND STRUCTURES				ILLINOIS FED. AID PROJECT					

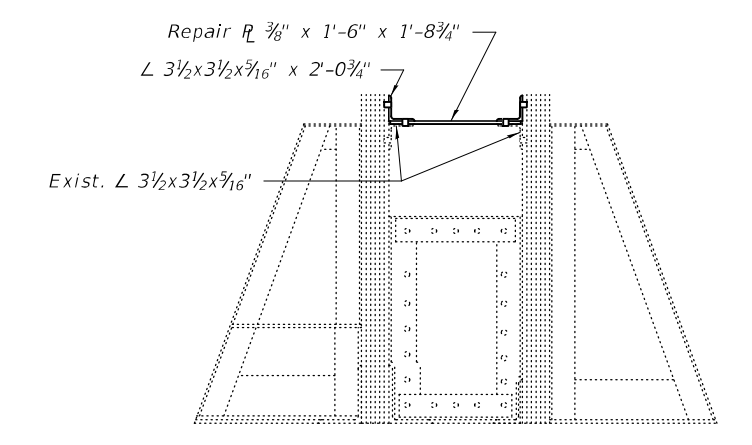


PARTIAL ELEVATION
(Looking North)

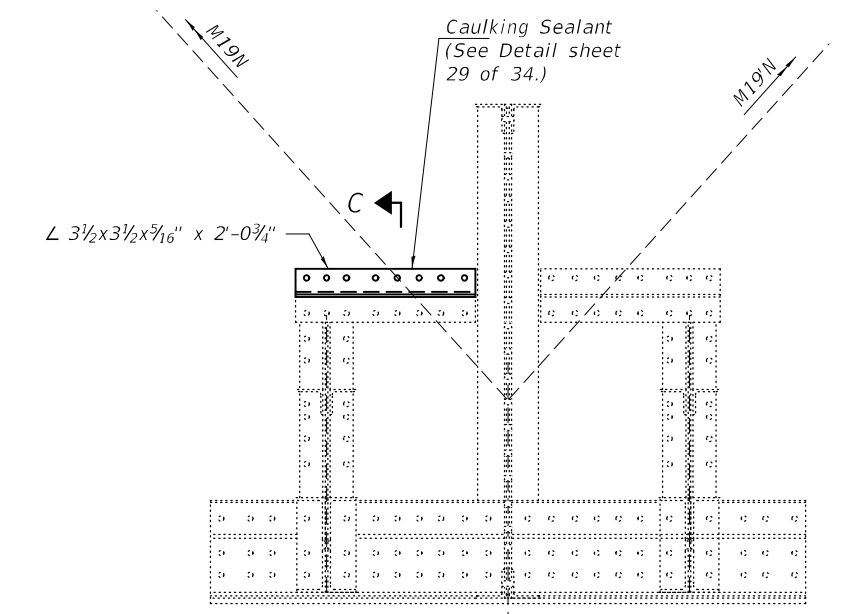
ITEM 615
L20S - M19'S
(Sp 10)



VIEW A-A



SECTION C-C

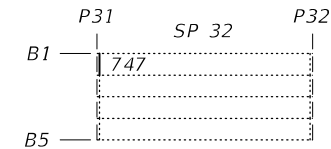
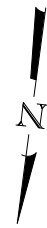


ITEM 607
L20N
(Sp 9)

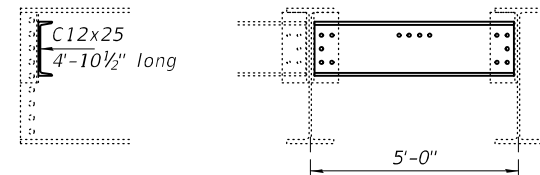
- BOLT HOLE LEGEND**
- - Holes to be shop drilled.
 - - Holes to be field drilled using existing holes as template.

REV. 10-28-2020

DESIGNED - JSB	EXAMINED - <i>Timothy A. Daulton</i>	DATE - OCTOBER 5, 2020	STATE OF ILLINOIS DEPARTMENT OF TRANSPORTATION	TRUSS MEMBER REPAIR DETAILS - SPANS 9 & 10 SN 001-0019	F.A.P. RTE. 63	SECTION (1ZB),BP,BRR,BJR-1,BDR,L	COUNTY ADAMS	TOTAL SHEETS 78	SHEET NO. 39
CHECKED - VHV	PASSED - <i>Carl R. Meyer</i>	REVISED 10/27/2020 JSB			CONTRACT NO. 72L58		ILLINOIS FED. AID PROJECT		
DRAWN - daburdell Steffen	ENGINEER OF BRIDGES AND STRUCTURES	REVISOR -	SHEET NO. 31 OF 34 SHEETS						



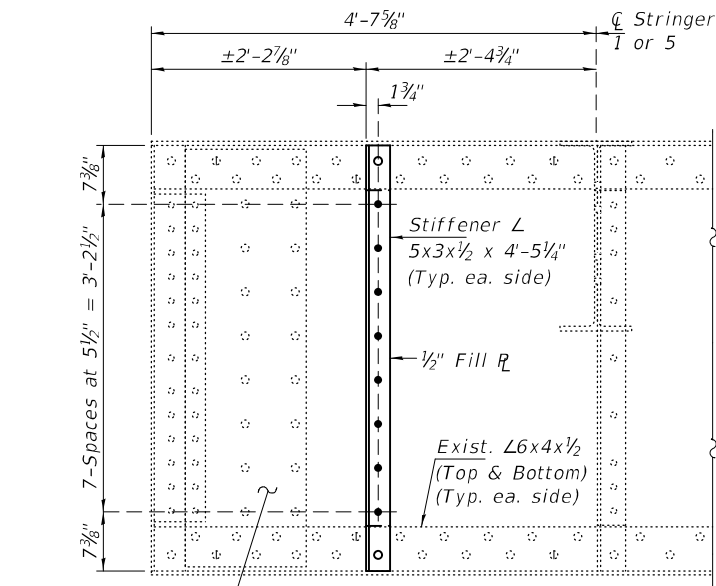
**DIAPHRAGM REPLACEMENT
PARTIAL PLAN**



SECTION ELEVATION

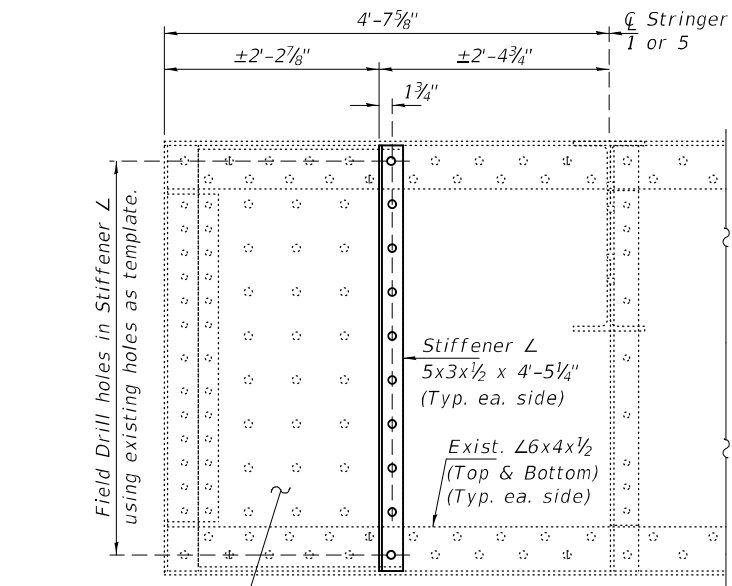
All holes to be field drilled.

**DIAPHRAGM REPLACEMENT
(Secondary Member)
(1-Required)**



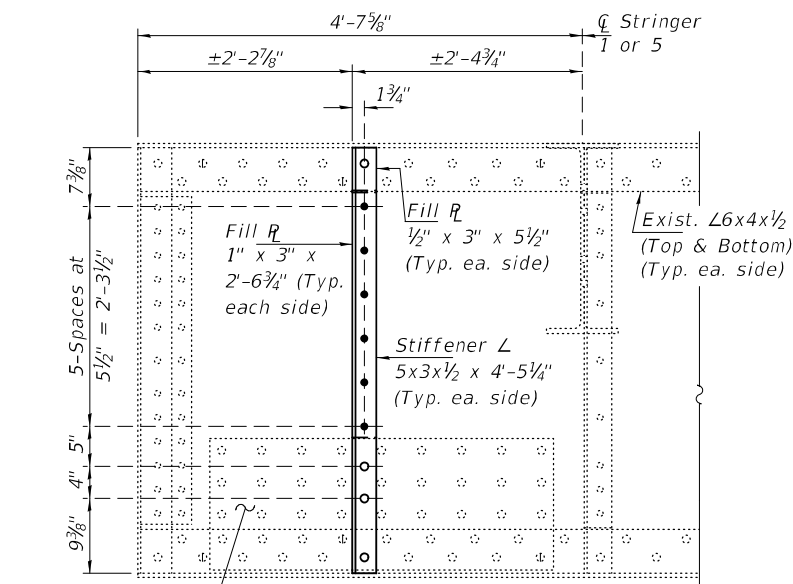
Existing Repair R
1/2" x 1'-3 1/8" x 4'-4 1/4"
at some locations.
(Typ. each side)

**FLOOR BEAM STIFFENER
TYPE "A"
(50-Locations)
(See Table for Locations)**



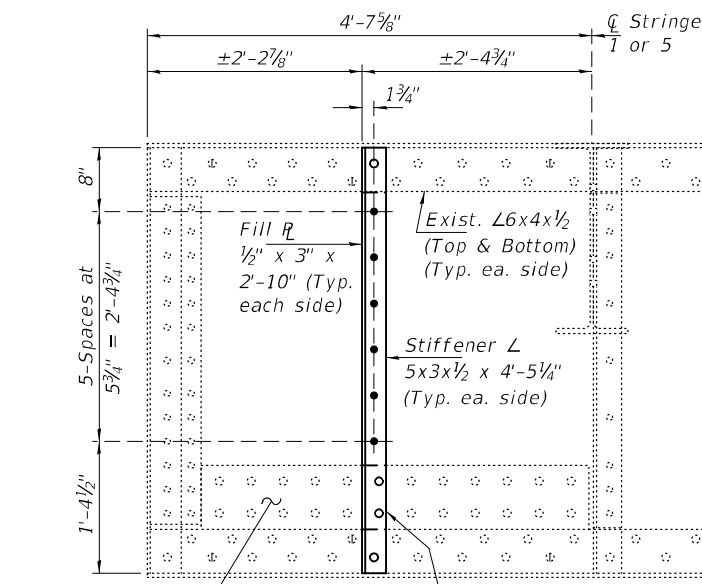
Existing Repair R
1/2" x 2'-1 3/8" x 4'-4 1/4"
with 1/2" Fill R
(Typ. each side)

**FLOOR BEAM STIFFENER
TYPE "B"
(5-Locations)
(See Table for Locations)**



Existing Repair R
1/2" x 1'-4 1/2" x 3'-7"
with 1/2" Fill R
(Typ. each side)

**FLOOR BEAM STIFFENER
TYPE "C"
(2-Locations)
(See Table for Locations)**



Existing Repair R
3/8" x 8" x 4'-0 1/2"
(Typ. each side)

**FLOOR BEAM STIFFENER
TYPE "D"
(5-Locations)
(See Table for Locations)**

STIFFENER REPAIR LOCATION TABLES

(See Note A)

TRUSS SPAN 9

LOCATION	FLOOR BEAM																				
	0	1	2	3	4	5	6	7	8	9	10	11	12	13	14	15	16	17	18	19	20
South End	-	A	A	A	B	A	767	569	A	C	A	B	A	A	35	A	217	A	37	A	A
North End	-	A	A	A	A	A	D	569	28	A	D	A	A	A	35	A	217	A	37	A	A

TRUSS SPAN 10

LOCATION	FLOOR BEAM																				
	20	19'	18'	17'	16'	15'	14'	13'	12'	11'	10'	9'	8'	7'	6'	5'	4'	3'	2'	1'	0'
South End	A	A	D	A	A	A	47	A	A	A	50	51	A	A	A	B	A	B	55	A	-
North End	A	A	C	A	A	A	47	A	A	A	50	51	A	A	D	A	A	B	D	647	-

Note A:

Letters "A" thru "D" indicate Stiffener Repair Type as detailed on this sheet. Numbers indicate Stiffener Repair Details shown on the corresponding NBIS Item Number Repair Detail. See sheets 14 thru 17 of 34.

REV. 10-28-2020

DESIGNED - JSB
CHECKED - VHV
DRAWN - daburdell Steffen
CHECKED - JSB VHV

EXAMINED
PASSED
ENGINEER OF STRUCTURAL SERVICES
ENGINEER OF BRIDGES AND STRUCTURES

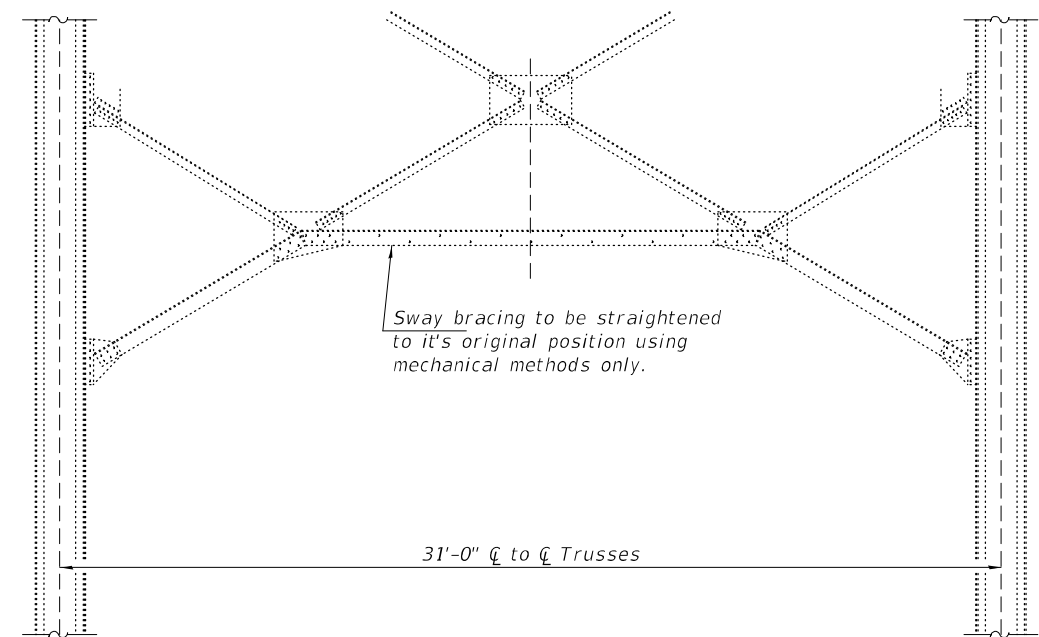
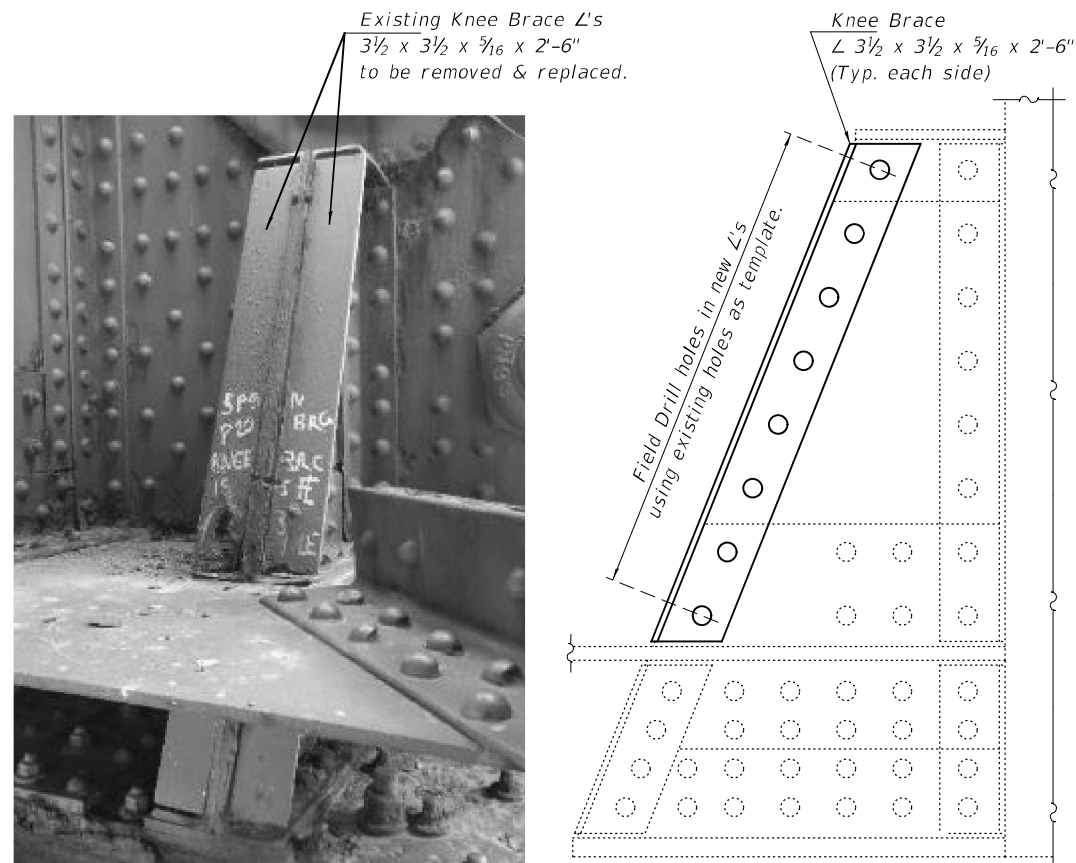
DATE - OCTOBER 5, 2020
REVISED 10/27/2020 JSB
REVISED -

STATE OF ILLINOIS
DEPARTMENT OF TRANSPORTATION

REPAIR DETAILS
SN 001-0019

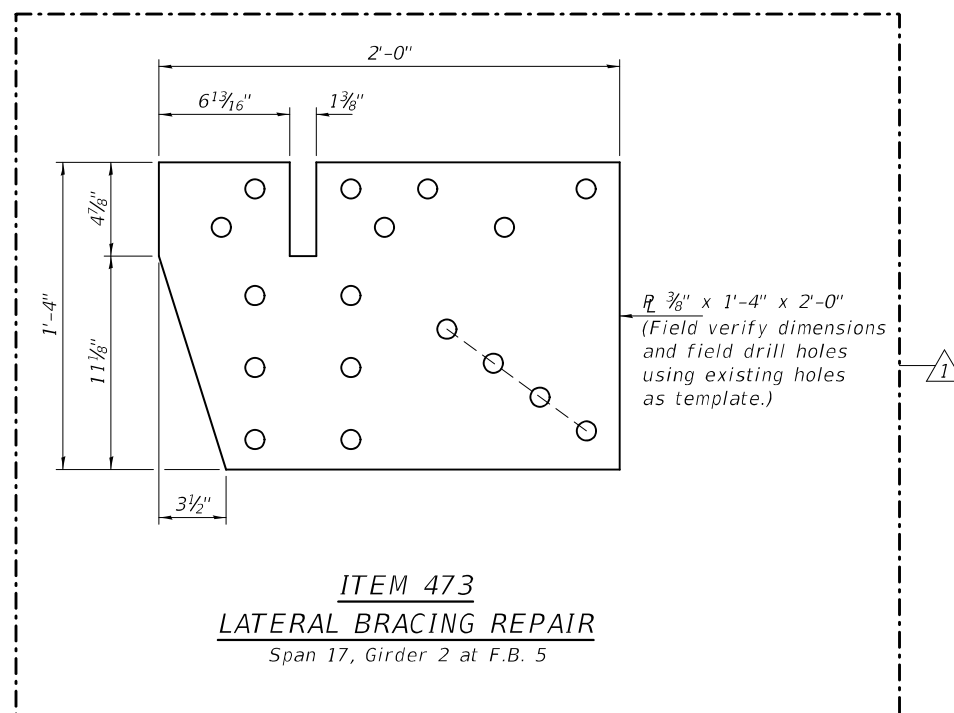
SHEET NO. 32 OF 34 SHEETS

F.A.P. RTE.	SECTION	COUNTY	TOTAL SHEETS	SHEET NO.
63	(12B),BP,BRR,BJR-1,BDR,L	ADAMS	78	40
CONTRACT NO. 72L58				
ILLINOIS FED. AID PROJECT				



ITEM 26
SWAY BRACING REPAIR
Span 9, Panel Point 7
(See Special Provision "Straighten Bent Member."
Work shall be paid for as Straighten Bent Member.)

ITEM 226
KNEE BRACE REPAIR
at Pier 9, North Truss, Inside Knee Brace
(Cost included with Structural Steel Repairs.)
(2019 NBIS Photo #240)



ITEM 473
LATERAL BRACING REPAIR
Span 17, Girder 2 at F.B. 5

REV. 10-28-2020

DESIGNED - JSB
CHECKED - VHV
DRAWN - daburdell Steffen
CHECKED - JSB VHV

EXAMINED
PASSED

Timothy A. Daulton
ENGINEER OF STRUCTURAL SERVICES

Carl Rieger
ENGINEER OF BRIDGES AND STRUCTURES

DATE - OCTOBER 5, 2020
REVISED 10/27/2020 JSB
REVISED -

STATE OF ILLINOIS
DEPARTMENT OF TRANSPORTATION

REPAIR DETAILS
SN 001-0019

SHEET NO. 33 OF 34 SHEETS

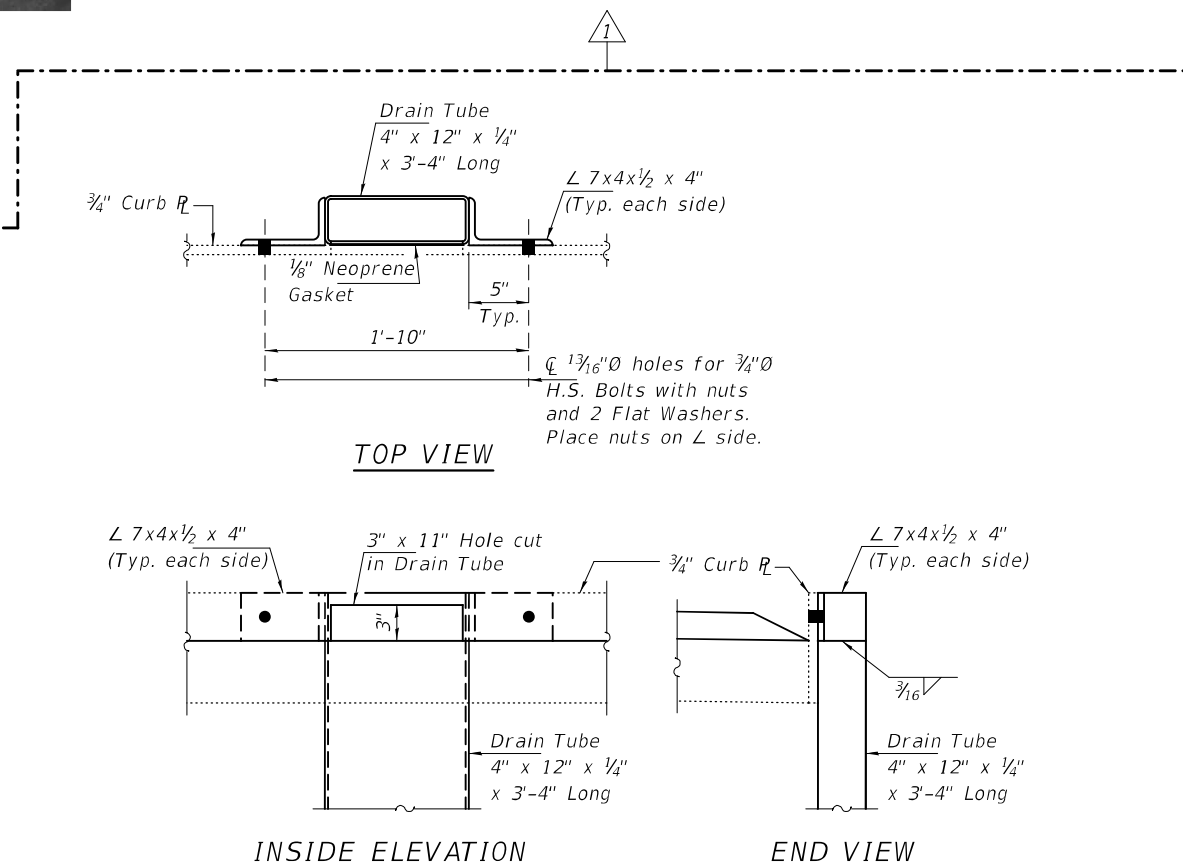
F.A.P. RTE.	SECTION	COUNTY	TOTAL SHEETS	SHEET NO.
63	(1ZB),BP,BRR,BJR-1,BDR,L	ADAMS	78	41
CONTRACT NO. 72L58				
ILLINOIS FED. AID PROJECT				



ITEM 512
LADDER REMOVAL
 Ladder at S. end of Pier 32
 (2019 NBIS Photo #532)



ITEMS 434 & 533
DRAIN CAP REPLACEMENT
 Item 533 - N. End of Pier 6 (Shown)
 Item 434 - N. End of Pier 7 (Similar)
 Cost of New Drain Cap included with Floor Drains.
 (2015 NBIS Photo #61)



ITEMS 298, 672 & 763
DRAIN REPAIR

(See Drain Repair table on sheet 4 of 34 for locations.)
 (Cost of angles, connections, & neoprene gasket included with Floor Drains.)

Ladder repairs on this sheet are included in the cost of Structural Steel Repairs.

REV. 10-28-2020

DESIGNED - JSB
 CHECKED - VHV
 DRAWN - daburdell Steffen
 CHECKED - JSB VHV

EXAMINED
 PASSED
 ENGINEER OF BRIDGES AND STRUCTURES

DATE - OCTOBER 5, 2020
 REVISED 10/27/2020 JSB
 REVISED -

STATE OF ILLINOIS
 DEPARTMENT OF TRANSPORTATION

REPAIR DETAILS
 SN 001-0019

SHEET NO. 34 OF 34 SHEETS

F.A.P. RTE.	SECTION	COUNTY	TOTAL SHEETS	SHEET NO.
63	(1ZB),BP,BRR,BJR-1,BDR,L	ADAMS	78	42
CONTRACT NO. 72L58				
ILLINOIS FED. AID PROJECT				