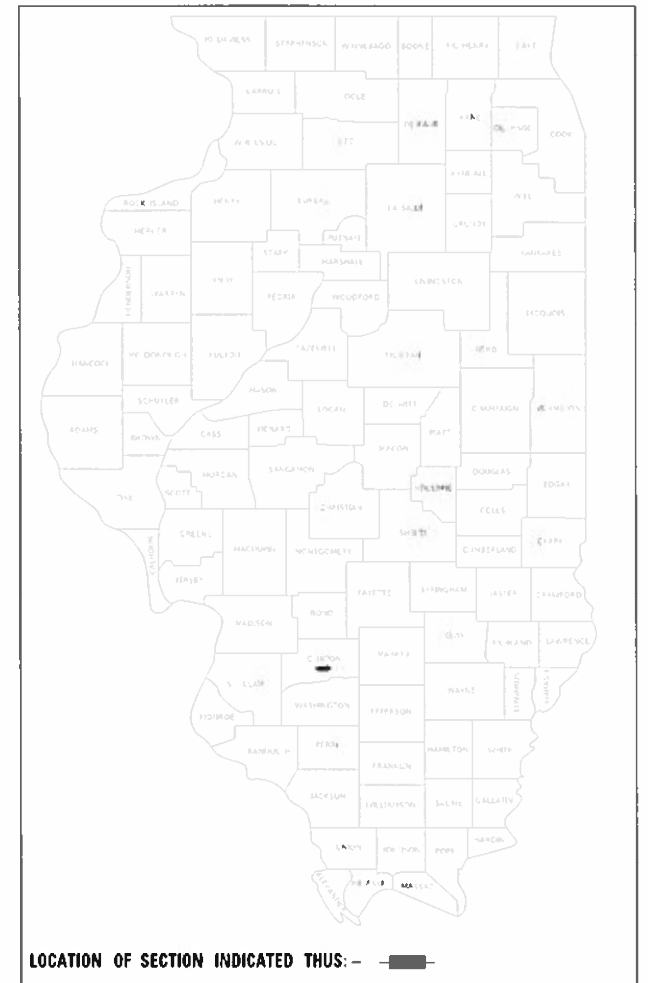


STATE OF ILLINOIS
DEPARTMENT OF TRANSPORTATION

F.A.P. RTE.	SECTION	COUNTY	TOTAL SHEETS	SHEET NO.
327	14-14RS-1	CLINTON	10	1
CONTRACT NO. 76N13				

D-98-039-20



LOCATION OF SECTION INDICATED THUS: —■—

FOR INDEX OF SHEETS, SEE SHEET NO. 2

TRAFFIC DATA	
LOCATION	US 50
2020 ADT	5550 (ACTUAL)
2044 ADT	6700 (ESTIMATED)
MU%	7.66
SU%	3.42

PROPOSED HIGHWAY PLANS

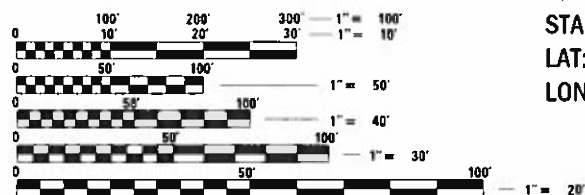
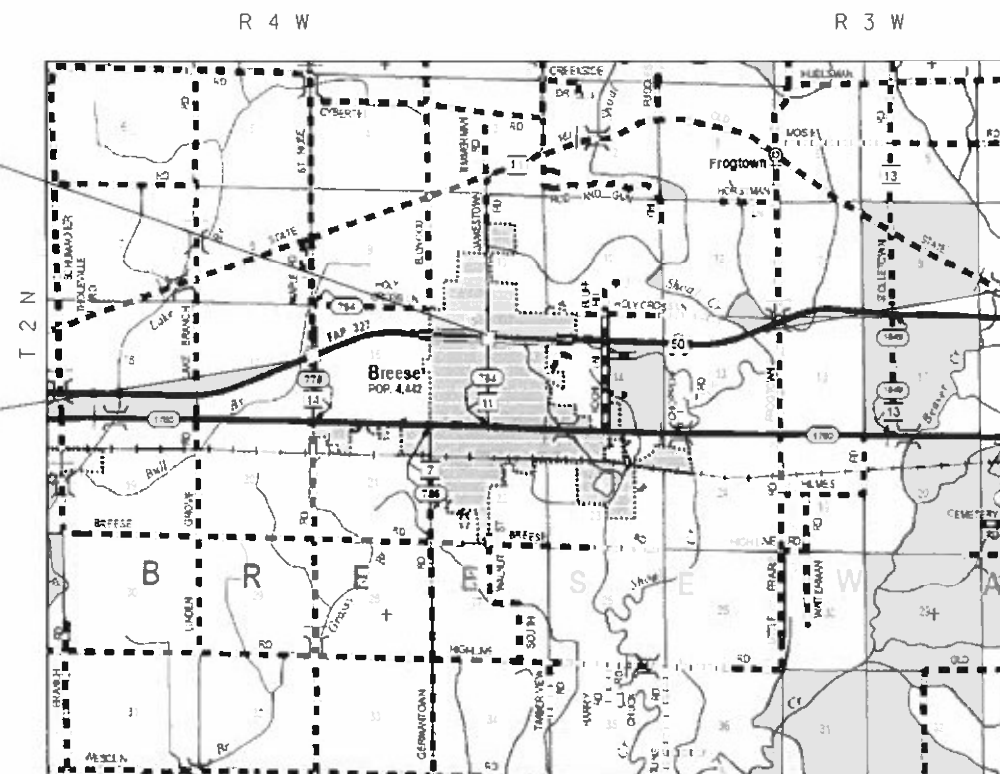
FAP ROUTE 327 (US 50)
SECTION 14-14RS-1
PROJECT NHPP-73N5(064)
ULTRA-THIN BONDED WEARING COURSE
CLINTON COUNTY

C-98-053-20

BRIDGE OMISSIONS:
EB SN 014-0066
STA. 3084+44.5 TO STA. 3085+51.5
(107.5 FT)
WB SN 014-0067
STA. 3084+44.5 TO STA. 3085+51.5
(107.5 FT)

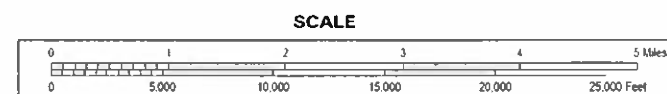
BEGIN PROJECT
0.3 MILES W. OF ST. ROSE RD.
STA. 2976+50
LAT: 38.618247
LONG:-89.558546

END PROJECT
(SN 014-0058)
STA. 3200+07
LAT: 38.621499
LONG:-89.485766



FULL SIZE PLANS HAVE BEEN PREPARED USING STANDARD ENGINEERING SCALES. REDUCED SIZED PLANS WILL NOT CONFORM TO STANDARD SCALES. IN MAKING MEASUREMENTS ON REDUCED PLANS, THE ABOVE SCALES MAY BE USED.

J.U.L.I.E.
JOINT UTILITY LOCATION INFORMATION FOR EXCAVATORS
1-800-892-0123
OR 811



PROJECT ENGINEER: TIFFANY BRASE (618) 346-3325
PROJECT MANAGER: RAHSHUN MILLER (618) 346-3196

CONTRACT NO. 76N13

GROSS LENGTH = 22,357 FT. = 4.23 MILE
NET LENGTH = 22,249.5 FT. = 4.21 MILE

STATE OF ILLINOIS
DEPARTMENT OF TRANSPORTATION

SUBMITTED Aug 7 2020
Kath Robust
REGIONAL ENGINEER

October 2, 2020
Scott A. Elk
ENGINEER OF DESIGN AND ENVIRONMENT

October 2, 2020
Gerald J. Gu
DIRECTOR OF HIGHWAYS PROJECT IMPLEMENTATION

PRINTED BY THE AUTHORITY
OF THE STATE OF ILLINOIS

INDEX OF SHEETS

- 1 COVER SHEET
- 2 INDEX OF SHEETS, GENERAL NOTES, HIGHWAY STANDARDS, MIXTURE REQUIREMENTS & COMMITMENTS
- 3-5 SUMMARY OF QUANTITIES
- 6-7 TYPICAL SECTIONS
- 8-9 SCHEDULE OF QUANTITIES
- 10 LOCATION MAP AND DETAIL SHEET

HIGHWAY STANDARDS

000001-07	STANDARD SYMBOLS, ABBREVIATIONS AND PATTERNS
001006	DECIMAL OF AN INCH AND OF A FOOT
701011-04	OFF-ROAD MOVING OPERATIONS, 2L, 2W DAY ONLY
701201-05	LANE CLOSURES, 2L, 2W, DAY ONLY FOR SPEEDS ≥ 45 MPH
701301-04	LANE CLOSURES, 2L, 2W, SHORT TIME OPERATIONS
701306-04	LANE CLOSURES, 2L, 2W, SLOW MOVING OPERATIONS DAY ONLY FOR SPEEDS ≥ 45 MPH
701311-03	SLOW MOVING OPERATIONS DAY ONLY
701336-07	LANE CLOSURES, 2L, 2W, WORK AREAS IN SERIES FOR SPEEDS ≥ 45 MPH
701411-09	LANE CLOSURE, MULTILANE, ENTRANCE OR EXIT RAMP, FOR SPEEDS ≥ 45 MPH
701421-08	LANE CLOSURE, MULTILANE, DAY OPERATIONS ONLY, FOR SPEEDS ≥ 45 MPH TO 55 MPH
701422-10	LANE CLOSURE, MULTILANE, FOR SPEEDS ≥ 45 MPH TO 55 MPH
701456-05	PARTIAL EXIT RAMP CLOSURE FOR FREEWAY/EXPRESSWAY
701901-08	TRAFFIC CONTROL DEVICES
780001-05	TYPICAL PAVEMENT MARKINGS
781001-04	TYPICAL APPLICATIONS RAISED REFLECTIVE PAVEMENT MARKERS

MIXTURE REQUIREMENTS

ROUTE	FAP 327 (US 50)
SECTION	14-14RS-1
COUNTIES	CLINTON
CONTRACT	76N13

DESCRIPTION	ULTRA-THIN BONDED WEARING COURSE - US 50 FROM 0.3 MILES WEST OF ST. ROSE RD. TO 0.3 MILES WEST OF FROGTOWN RD.
-------------	--

ADT (CONSTRUCTION YR):	5550
MU%	7.66
SU%	3.42

MIXTURE USE	ULTRA-THIN BWC
AC/PG	
RAP % (MAX)	
DESIGN AIR VOIDS	
MIX COMPOSITION (GRADATION MIXTURE)	IL 9.5 UTB
FRICTION AGG	MIXTURE "D"
QUALITY MGMT PROGRAM	

GENERAL NOTES

① UTILITIES KNOWN TO HAVE FACILITIES WITHIN THE PROJECT AREA ARE AS FOLLOWS:

	AERIAL	BURIED
*AMEREN ILLINOIS (GAS & ELECTRIC)	x	x
*AT&T ILLINOIS (COMMUNICATIONS)	x	x
*CITY OF BREESE (ELECTRIC)	x	x
*CITY OF BREESE (WATER & SANITARY SEWER)		x
*CARLYLE NORTH WATER COMPANY (WATER)		x
*CHARTER COMMUNICATIONS, INC. (CABLE TV)	x	x
*CLINTON COUNTY ELECTRIC COOPERATIVE (ELECTRIC)	x	x
*COUNTRYMARK COOPERATIVE, LLP (PIPELINE)		x
*ENABLE MIDSTREAM PARTNERS (PIPELINE)		x
*ILLINOIS RURAL HEALTHNET (COMMUNICATIONS)	x	x
*NATURAL GAS PIPELINE COMPANY OF AMERICA (PIPELINE)		x
*ST. ROSE PUBLIC WATER DISTRICT (WATER & SANITARY SEWER)		x

MEMBERS OF J.U.L.I.E. CALL TOLL FREE (800) 892-0123 OR 811 AND ARE INDICATED BY *. NON-J.U.L.I.E. MEMBERS MUST BE NOTIFIED INDIVIDUALLY.

- ② THE CONTRACTOR AND THE ENGINEER SHALL BE AWARE THAT NO SURVEY WAS PERFORMED FOR THIS PROJECT. THE STATIONING, TOPOGRAPHY, AND QUANTITIES SHOWN IN THE PLANS WERE CREATED USING MICROFILM AND FIELD MEASUREMENTS. ALL SHALL BE ASSUMED TO BE APPROXIMATE. THE CONTRACTOR SHALL VERIFY DIMENSIONS AND CONDITIONS IN THE FIELD PRIOR TO CONSTRUCTION AND ORDERING OF MATERIALS.
- ③ ULTRA-THIN OVERLAY SHALL EXTEND 6" OVER THE EDGELINE BUT SHALL NOT FILL IN THE EXISTING RUMBLE STRIP IN THE SHOULDER.
- ④ NO OVERNIGHT LANE CLOSURES WILL BE PERMITTED.
- ⑤ THE PROPOSED PAVEMENT MARKINGS AND TEMPORARY PAVEMENT MARKINGS SHALL MATCH THE PAVEMENT MARKINGS SHEET AND CONTINUE THROUGHOUT THE JOB AND TIE INTO THE EXISTING PAVEMENT MARKINGS AT THE END OF THE PROJECT.
- ⑥ TWO CHANGEABLE MESSAGE SIGNS SHALL BE PROVIDED ALONG US 50 TO ALERT DRIVERS OF THE ROAD CONSTRUCTION. CHANGEABLE MESSAGE SIGNS SHALL BE PLACED 14 DAYS PRIOR TO BEGINNING ANY WORK. EXACT LOCATIONS OF THE CHANGEABLE MESSAGE SIGNS SHALL BE DETERMINED BY THE ENGINEER.
- ⑦ THE RAISED REFLECTIVE PAVEMENT MARKERS SHALL NOT BE PLACED IN THE SAME LOCATION AS THEY WERE PREVIOUSLY INSTALLED.

COMMITMENTS

NONE

MODEL: Default
FILE: \\na01c-pk1-plm08r00m.dca\illinois.gov\PWIDOT\Documents\DOT_Offices\District_8\Projects\0876N13\ADDDDataCAD\sheet0876N13-sh-covr.cgm

USER NAME = millerraj	DESIGNED -	REVISED -	STATE OF ILLINOIS DEPARTMENT OF TRANSPORTATION	INDEX OF SHEETS, GENERAL NOTES, HIGHWAY STANDARDS, MIXTURE REQUIREMENTS & COMMITMENTS	F.A.P. RTE.	SECTION	COUNTY	TOTAL SHEETS	SHEET NO.
PLOT SCALE = 100,0000 ' / in.	DRAWN -	REVISED -			327	14-14RS-2	CLINTON	10	2
PLOT DATE = 7/16/2020	CHECKED -	REVISED -			CONTRACT NO. 76N13				
	DATE -	REVISED -			SCALE:	SHEET OF SHEETS	STA.	TO STA.	
					ILLINOIS FED. AID PROJECT				

CODE NO.	ITEM	UNIT	TOTAL QUANTITY	CONSTRUCTION CODE	
				ROADWAY	ROADWAY
				0005	0005
				RURAL	URBAN
40600250	RAPID SETTING POLYMER MODIFIED EMULSION	POUND	311183	136144.5	175038.5
40600985	PORTLAND CEMENT CONCRETE SURFACE REMOVAL - BUTT JOINT	SQ YD	341	154.5	186.5
40600990	TEMPORARY RAMP	SQ YD	20	5.6	14.4
44200529	CLASS A PATCHES, TYPE II, 8 INCH	SQ YD	238	124	114
44213000	PATCHING REINFORCEMENT	SQ YD	238	124	114
44213200	SAW CUTS	FOOT	1791	933	858
67000400	ENGINEER'S FIELD OFFICE, TYPE A	CAL MO	3	2	1
67100100	MOBILIZATION	L SUM	1	0.6	0.4
70100310	TRAFFIC CONTROL AND PROTECTION, STANDARD 701421	L SUM	1	0.6	0.4
70100320	TRAFFIC CONTROL AND PROTECTION, STANDARD 701422	L SUM	1	0.6	0.4
70100420	TRAFFIC CONTROL AND PROTECTION, STANDARD 701411	EACH	2	1	1
70100450	TRAFFIC CONTROL AND PROTECTION, STANDARD 701201	L SUM	1	0.6	0.4
70100460	TRAFFIC CONTROL AND PROTECTION, STANDARD 701306	L SUM	1	0.6	0.4
70100600	TRAFFIC CONTROL AND PROTECTION, STANDARD 701336	L SUM	1	0.6	0.4

80% FED
20% STATE

MODEL: Default
 FILE: \\nrcs-pix\pub\room\dat\illinois.gov\PIW\DOT\Documents\DOT_Offices\Dir\ctc @projects\076N13\CADD\ata\CAD\sheet\076N13-shc-cover.dgn

USER NAME = millerraj	DESIGNED -	REVISED -
	DRAWN -	REVISED -
PLOT SCALE = 100.0000' / in.	CHECKED -	REVISED -
PLOT DATE = 7/16/2020	DATE -	REVISED -

**STATE OF ILLINOIS
DEPARTMENT OF TRANSPORTATION**

SUMMARY OF QUANTITIES

SCALE: NTS SHEET 1 OF 2 SHEETS STA. TO STA.

F.A.P. RTE.	SECTION	COUNTY	TOTAL SHEETS	SHEET NO.
327	14-14R5-2	CLINTON	10	3
CONTRACT NO. 76N13				
ILLINOIS FED. AID PROJECT				

MODEL: Default
 FILE: \\nrcs-pix\pub\room\dat\illinois.gov\PWIDOT\Documents\DOT_Offices\District 8\Projects\076N13\CADD\DATA\CAD\Sheet\076N13-shc-cover.dgn

CODE NO.	ITEM	UNIT	TOTAL QUANTITY	CONSTRUCTION CODE	
				80% FED 20% STATE	
				ROADWAY	ROADWAY
				0005	0005
				RURAL	URBAN
70100825	TRAFFIC CONTROL AND PROTECTION, STANDARD 701456	L SUM	1	0.6	0.4
70107025	CHANGEABLE MESSAGE SIGN	CAL DA	60	30	30
70300100	SHORT TERM PAVEMENT MARKING	FOOT	8628	3722	4906
70300150	SHORT TERM PAVEMENT MARKING REMOVAL	SQ FT	3835	1654.5	2180.5
70300210	TEMPORARY PAVEMENT MARKING LETTERS AND SYMBOLS	SQ FT	47	47	
70300220	TEMPORARY PAVEMENT MARKING - LINE 4"	FOOT	90105	40945	49160
70300250	TEMPORARY PAVEMENT MARKING - LINE 8"	FOOT	4808		4808
* 78000100	THERMOPLASTIC PAVEMENT MARKING - LETTERS AND SYMBOLS	SQ FT	47	47	
* 78000200	THERMOPLASTIC PAVEMENT MARKING - LINE 4"	FOOT	90105	40945	49160
* 78000500	THERMOPLASTIC PAVEMENT MARKING - LINE 8"	FOOT	4808		4808
* 78100100	RAISED REFLECTIVE PAVEMENT MARKER	EACH	628	232	396
78300200	RAISED REFLECTIVE PAVEMENT MARKER REMOVAL	EACH	628	232	396
X0300031	ULTRA-THIN BONDED WEARING COURSE, IL-9.5 UTB, MIX "D"	SQ YD	99058	39808.3	59249.7
Ø Z0076600	TRAINEES	HOUR	500	500	
X0327979	PAVEMENT MARKING REMOVAL - GRINDING	SQ FT	47504	20520	26984
Ø Z0076604	TRAINEES TRAINING PROGRAM GRADUATE	HOUR	500	500	

Ø 0042
 * SPECIALTY ITEM

REV. - MS

USER NAME = millerraj	DESIGNED -	REVISED -
	DRAWN -	REVISED -
PLOT SCALE = 100.0000' / in.	CHECKED -	REVISED -
PLOT DATE = 7/16/2020	DATE -	REVISED -

**STATE OF ILLINOIS
 DEPARTMENT OF TRANSPORTATION**

SUMMARY OF QUANTITIES

SCALE: NTS SHEET 1 OF 2 SHEETS STA. TO STA.

F.A.P. RTE.	SECTION	COUNTY	TOTAL SHEETS	SHEET NO.
327	14-14R5-2	CLINTON	10	4
CONTRACT NO. 76N13			ILLINOIS FED. AID PROJECT	

MODEL: Default
 FILE: \\nrcs-pis\uplanroom\dat\illinois.gov\PIWIDOT\Documents\IDOT_Offices\IDOT\DOT_076N13\CADDData\CAD\Sheet\076N13-shc-cover.dgn

CODE NO.	ITEM	UNIT	TOTAL QUANTITY	CONSTRUCTION CODE	
				80% FED 20% STATE	
				ROADWAY	ROADWAY
				0005	0005
				RURAL	URBAN
X7030005	TEMPORARY PAVEMENT MARKING REMOVAL	SQ FT	31638	13648.5	17989.5

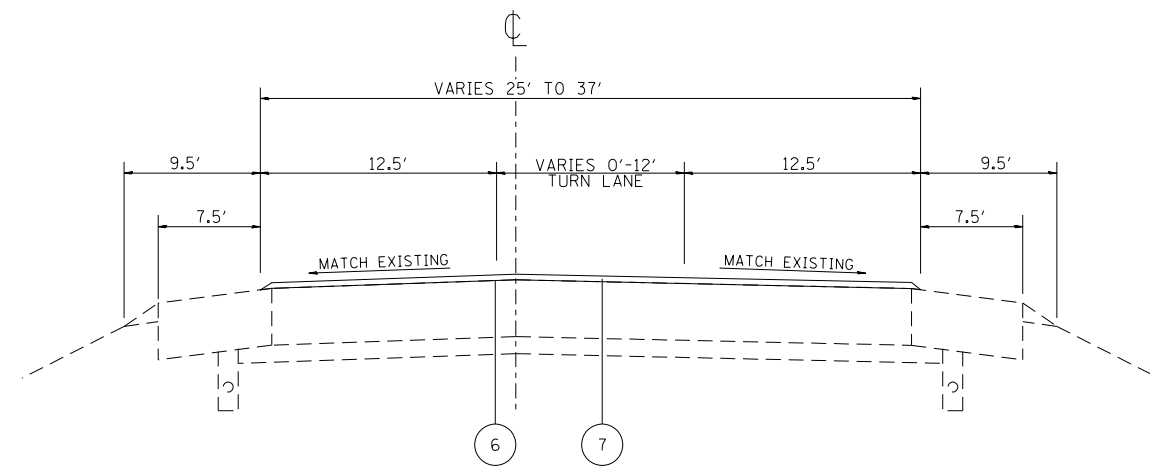
USER NAME = millerraj	DESIGNED -	REVISED -
	DRAWN -	REVISED -
PLOT SCALE = 100.0000' / in.	CHECKED -	REVISED -
PLOT DATE = 7/16/2020	DATE -	REVISED -

**STATE OF ILLINOIS
 DEPARTMENT OF TRANSPORTATION**

SUMMARY OF QUANTITIES

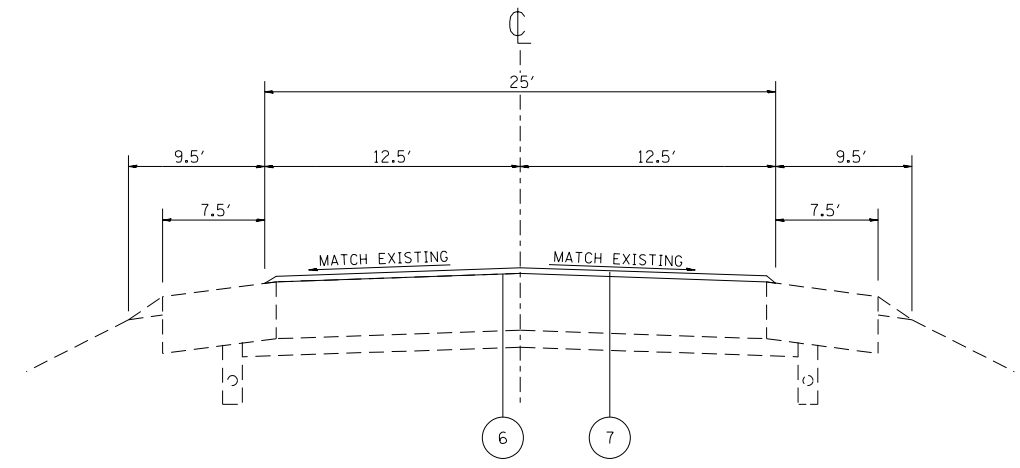
SCALE: NTS SHEET 1 OF 2 SHEETS STA. TO STA.

F.A.P. RTE.	SECTION	COUNTY	TOTAL SHEETS	SHEET NO.
327	14-14R5-2	CLINTON	10	5
CONTRACT NO. 76N13				
ILLINOIS FED. AID PROJECT				



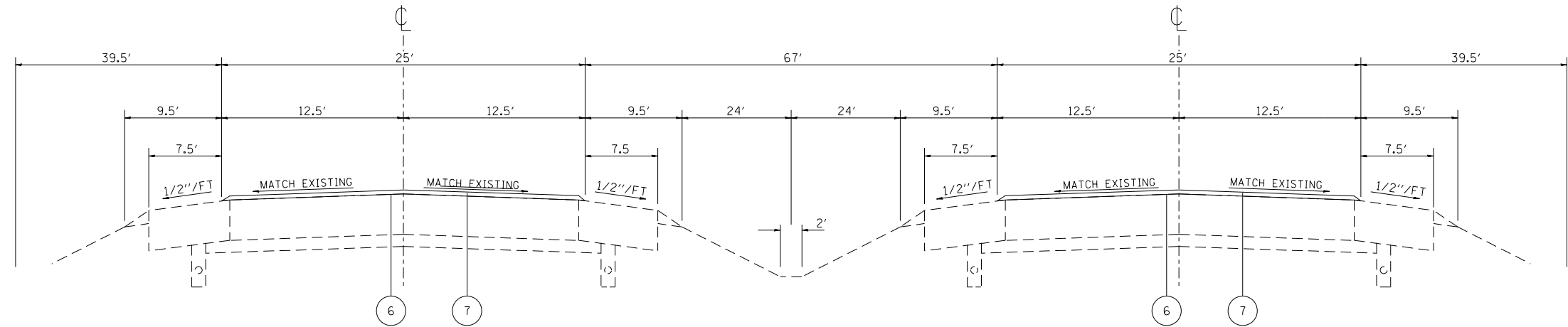
PROPOSED TYPICAL SECTION

STA. 2988+79 TO STA. 3007+67



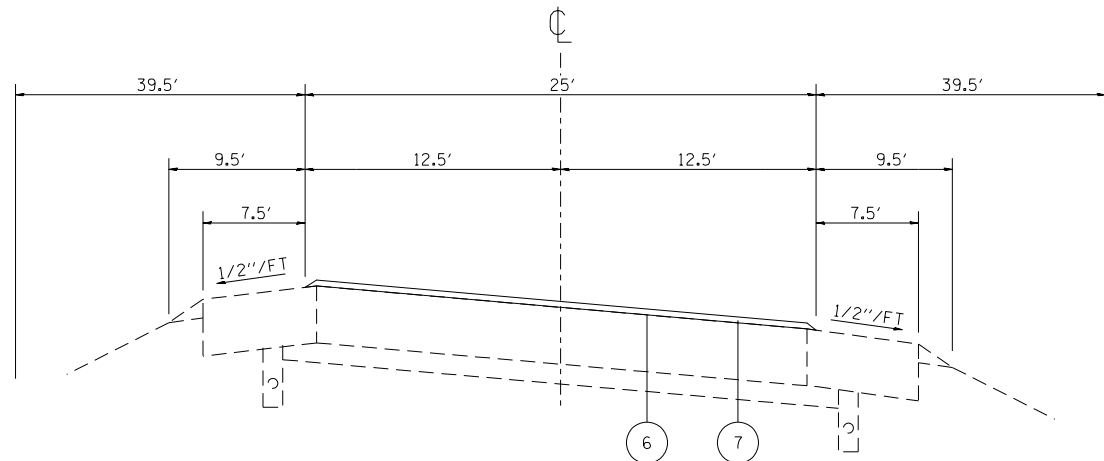
PROPOSED TYPICAL SECTION

STA. 2976+50 TO STA. 2988+79
 STA. 3007+67 TO STA. 3023+00
 STA. 3043+00 TO STA. 3050+00
 STA. 3125+00 TO STA. 3180+00
 STA. 3191+00 TO STA. 3200+07



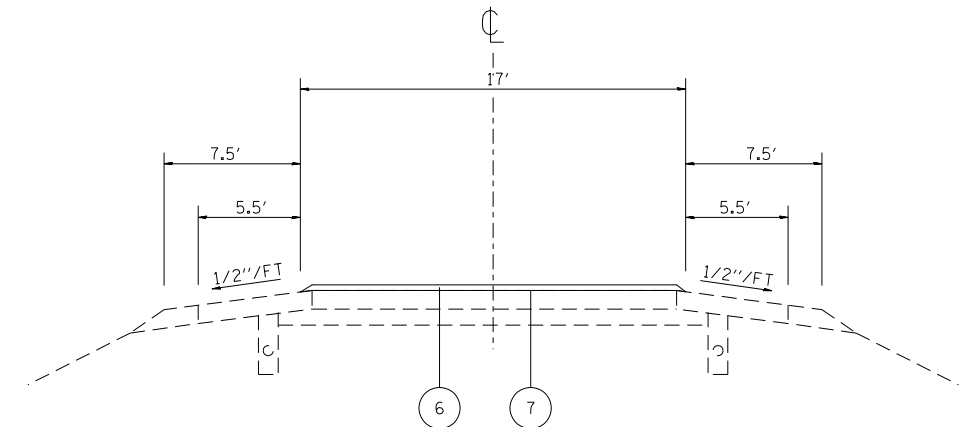
PROPOSED TYPICAL SECTION

STA. 3050+00 TO STA. 3084+44.5
 BRIDGE OMISSION STA. 3084+44.5 TO STA. 3085+51.5
 STA. 3085+51.5 TO STA. 3125+00



PROPOSED SUPERELEVATED SECTION

STA. 3023+00 TO STA. 3043+00
 STA. 3180+00 TO STA. 3191+00



PROPOSED RAMPS TYPICAL SECTION

RAMP A: STA. 0+00 TO STA. 22+91.52
 RAMP B: STA. 0+00 TO STA. 14+52.74
 RAMP C: STA. 0+00 TO STA. 25+25.25
 RAMP D: STA. 0+00 TO STA. 22+78.89

LEGEND

- ① EXISTING STABILIZED SUB-BASE 4"
- ② EXISTING PCC PAVEMENT 8"
- ③ EXISTING HMA SHOULDERS
- ④ EXISTING AGGREGATE SHOULDER
- ⑤ EXISTING PIPE DRAINS 4"
- ⑥ PROPOSED RAPID SETTING POLYMER MODIFIED EMULSION
- ⑦ PROPOSED ULTRA-THIN BONDED WEARING COURSE, 3/4"

MODEL: Default
 FILE: \\nrc\proj\sheltonroom\dat\illinois\pcc\RWIDDOT\Documents\DOT_Offices\Drawtct\B\Projects\076N13\CADD\Drawings\076N13-shc-cover.dgn

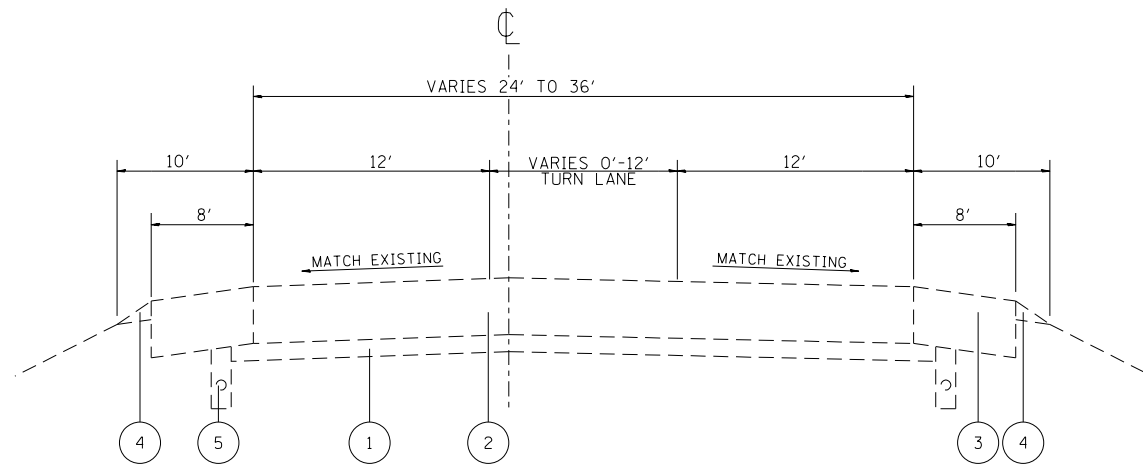
USER NAME	= millerraj	DESIGNED	-	REVISED	-
DRAWN		REVISIONS		REVISED	
PLOT SCALE	= 100.0000' / in.	CHECKED	-	REVISED	-
PLOT DATE	= 7/16/2020	DATE	-	REVISED	-

**STATE OF ILLINOIS
DEPARTMENT OF TRANSPORTATION**

TYPICAL SECTIONS

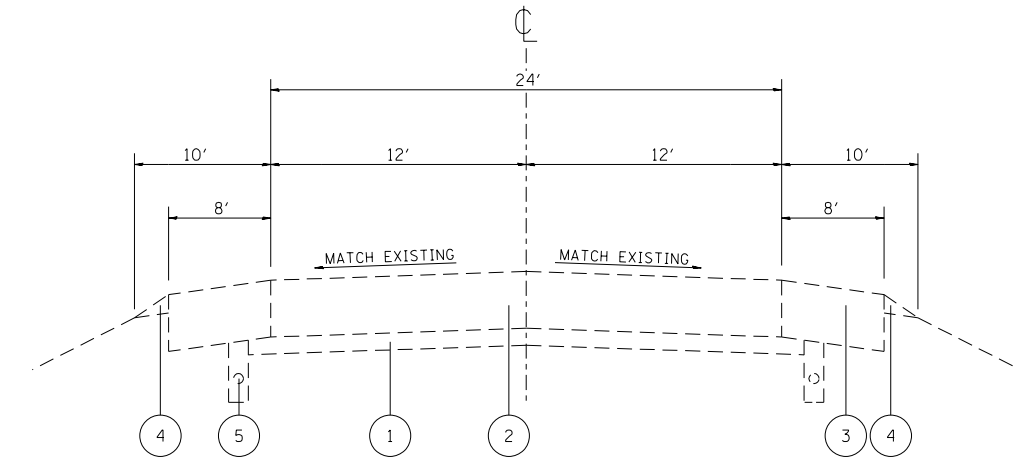
SCALE: NTS SHEET 1 OF 2 SHEETS STA. TO STA.

F.A.P. RTE.	SECTION	COUNTY	TOTAL SHEETS	SHEET NO.
327	14-14RS-1	CLINTON	10	7
CONTRACT NO. 76N13				
ILLINOIS FED. AID PROJECT				



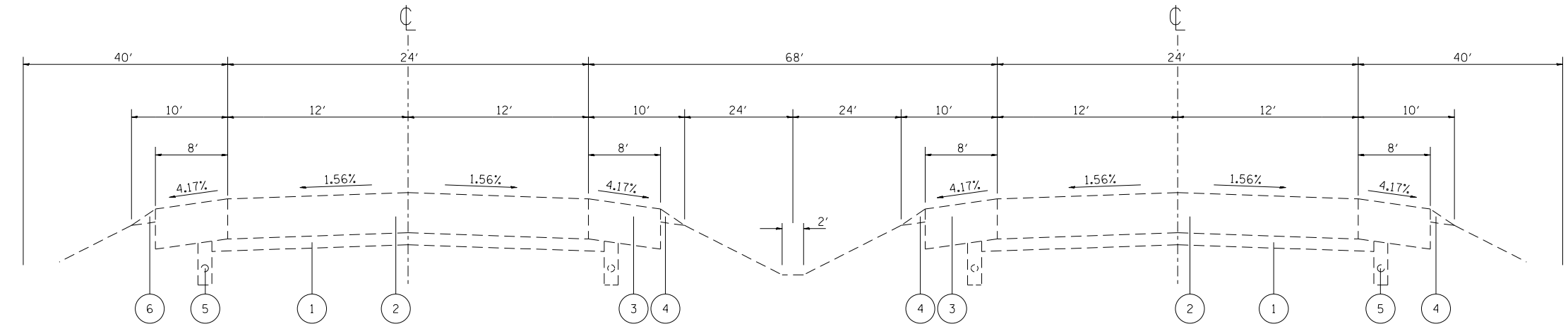
EXISTING TYPICAL SECTION

STA. 2988+79 TO STA. 3007+67



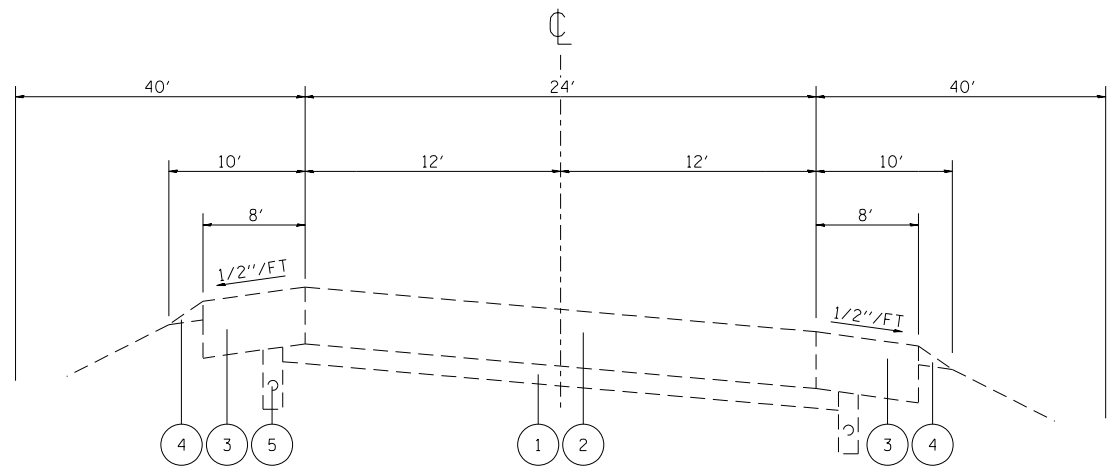
EXISTING TYPICAL SECTION

STA. 2976+50 TO STA. 2988+79
 STA. 3007+67 TO STA. 3023+00
 STA. 3043+00 TO STA. 3050+00
 STA. 3125+00 TO STA. 3180+00
 STA. 3191+00 TO STA. 3200+07



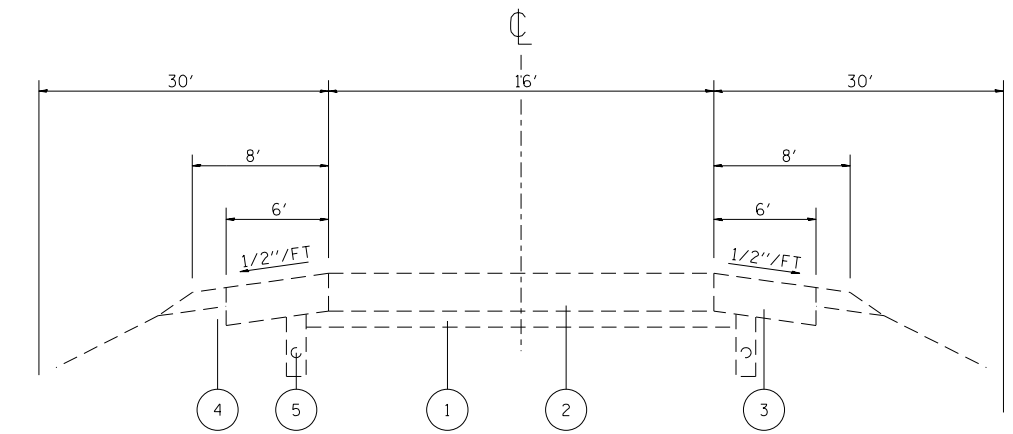
EXISTING TYPICAL SECTION

STA. 3050+00 TO STA. 3084+44.5
 BRIDGE OMISSION STA. 3084+44.5 TO STA. 3085+51.5
 STA. 3085+51.5 TO STA. 3125+00



EXISTING SUPERELEVATED SECTION

STA. 3023+00 TO STA. 3043+00
 STA. 3180+00 TO STA. 3191+00



EXISTING RAMPS TYPICAL SECTION

RAMP A: STA. 0+00 TO STA. 22+91.52
 RAMP B: STA. 0+00 TO STA. 18+87.18
 RAMP C: STA. 0+00 TO STA. 20+86.27
 RAMP D: STA. 0+00 TO STA. 22+78.89

LEGEND

- ① EXISTING STABILIZED SUB-BASE 4"
- ② EXISTING PCC PAVEMENT 8"
- ③ EXISTING HMA SHOULDERS
- ④ EXISTING AGGREGATE SHOULDER
- ⑤ EXISTING PIPE DRAINS 4"
- ⑥ PROPOSED RAPID SETTING POLYMER MODIFIED EMULSION
- ⑦ PROPOSED ULTRA-THIN BONDED WEARING COURSE, 3/4"

**STATE OF ILLINOIS
 DEPARTMENT OF TRANSPORTATION**

TYPICAL SECTIONS

SCALE: NTS SHEET 1 OF 2 SHEETS STA. TO STA.

F.A.P. RTE.	SECTION	COUNTY	TOTAL SHEETS	SHEET NO.
327	14-14RS-2	CLINTON	10	6
CONTRACT NO. 76N13				
ILLINOIS FED. AID PROJECT				

MODEL: Default
 FILE: \\nrc-pix\pub\haronom.dwg
 PROJECT: \\nrc-pix\pub\haronom.dwg
 PLOT DATE: 7/16/2020

THERMOPLASTIC PAVEMENT MARKING SCHEDULE

STATION TO STATION			LENGTH FEET	THERMOPLASTIC PAVEMENT MARKINGS								PAVEMENT MARKER REMOVAL-GRINDI NG SQFT	SHORT TERM PAVEMENT MARKING FEET	SHORT TERM PAVEMENT MARKING REMOVAL SQFT	TEMPORARY PAVEMENT MARKING REMOVAL SQFT
				LETTER & SYMBOLS SQFT	WHITE 4"			YELLOW 4"		WHITE 8"	YELLOW 8"				
					SOLID 4"	TURN LANE	SKIP-DASH	SKIP-DASH	LANE LINE	LANE LINE	LANE LINE				
STA.	TO	STA.	FEET	FEET	FEET	FEET	FEET	FEET	FEET	FEET	FEET	FEET	FEET	FEET	FEET
RURAL															
2976+50	TO	3008+23	3173.0	46.8	6346.0	258.0		103.0	5868.0			6334.3	1143.2	508.1	4191.7
3008+23	TO	3018+23	1000.0		2000.0			250.0	444.0			1347.0	244.9	108.8	898.0
3018+23	TO	3028+23	1000.0		2000.0			250.0				1125.0	204.5	90.9	750.0
3028+23	TO	3038+23	1000.0		2000.0			250.0				1125.0	204.5	90.9	750.0
3038+23	TO	3048+00	977.0		1954.0			244.3	1160.0			1679.1	305.3	135.7	1119.4
3128+26	TO	3131+00	274.0		548.0			68.5	1111.0			863.8	157.0	69.8	575.8
3131+00	TO	3141+00	1000.0		2000.0			250.0				1125.0	204.5	90.9	750.0
3141+00	TO	3151+00	1000.0		2000.0			250.0				1125.0	204.5	90.9	750.0
3151+00	TO	3161+00	1000.0		2000.0			250.0				1125.0	204.5	90.9	750.0
3161+00	TO	3171+00	1000.0		2000.0			250.0				1125.0	204.5	90.9	750.0
3171+00	TO	3181+00	1000.0		2000.0			250.0				1125.0	204.5	90.9	750.0
3181+00	TO	3191+00	1000.0		2000.0			250.0				1125.0	204.5	90.9	750.0
3191+00	TO	3200+07	907.0		1814.0			226.8	550.0			1295.4	235.5	104.7	863.6
URBAN															
3048+00	TO	3084+44.86	3644.9		7289.7		1822.4		5680.0	1370.0	1208.0	8685.1	1579.1	701.8	5790.0
3084+44.86	TO	3085+52.36	107.5												
3085+52	TO	3128+26	4273.6		8547.3		2136.8		6596.0	1730.0	500.0	9755.1	1773.6	788.3	6503.4
BRIDGE OMISSION															
RAMP A															
0	TO	22+91.52	2291.5		2291.5				2291.5			2291.5	416.6	185.2	1527.7
RAMP B															
0	TO	18+87.18	1887.2		1887.2				1887.2			1887.2	343.1	152.5	1258.1
RAMP C															
0	TO	20+86.27	2086.3		2086.3				2086.3			2086.3	379.3	168.6	1390.8
RAMP D															
0	TO	22+78.89	2278.9		2278.9				2278.9			2278.9	414.3	184.2	1519.3
TOTAL:				47	53042.9	258	3959.3	2892.5	29952.9	3100.0	1708.0	47504	8628	3835	31638
					90105				4808						

MODEL: Default
 FILE: \\nrc-pix\pub\room.dat\illinois.gov\PWIDOT\Documents\DOT_Offices\Illinet\B\Projects\076N13\CADD\ataCAD\sheet\076N13-shc-cover.dgn

USER NAME = millerraj	DESIGNED -	REVISED -
	DRAWN -	REVISED -
PLOT SCALE = 100,0000 ' / in.	CHECKED -	REVISED -
PLOT DATE = 7/16/2020	DATE -	REVISED -

**STATE OF ILLINOIS
DEPARTMENT OF TRANSPORTATION**

SCHEDULE OF QUANTITIES			
SCALE: NTS	SHEET 2	OF 2 SHEETS	STA. TO STA.

F.A.P. RTE.	SECTION	COUNTY	TOTAL SHEETS	SHEET NO.
327	14-14R5-1	CLINTON	10	8
CONTRACT NO. 76N13				
ILLINOIS FED. AID PROJECT				

RESURFACING SCHEDULE						
STATION			LENGTH	WIDTH	RAPID SETTING POLYMER MODIFIED EMULSION	ULTRA-THIN BONDED WEARING COURSE, IL-9.5 UTB, MIX "D", 3/4"
			FEET	FEET	POUND	SQ YD
RURAL						
2976+50	TO	3048+00	7150	25	50050.0	19861.1
3128+26	TO	3200+07	7181	25	50267.0	19947.2
URBAN						
3048+00	TO	3084+45	3645	49	50007.5	19844.2
3084+45	TO	3085+52	108	BRIDGE OMISSION		
3085+52	TO	3128+26	4274	49	58634.3	23267.6
RAMP A						
0+00	TO	22+91.32	2291.32	17	5453.3	4328.0
RAMP B						
0+00	TO	18+87.18	1887.18	17	4491.5	3564.7
RAMP C						
0+00	TO	20+86.27	2086.27	17	4965.3	3940.7
RAMP D						
0+00		22+78.89	2278.89	17	5423.8	4304.6
TOTAL:					229293	99058

CLASS A PAVEMENT PATCHING 8 INCH SCHEDULE						
LOCATION	LANE EB/WB	LENGTH	LANE WIDTH	CLASS A PATCH TYPE II	PATCHING REINFORCEMENT	SAWCUT
		(FT)	(FT)	(SQ YD)	(SQ YD)	(FT)
RURAL						
2990+92	EB	6.0	12.0	8.0	8.0	60.0
3000+22	WB	6.0	12.0	8.0	8.0	60.0
3000+44	EB	6.0	12.0	8.0	8.0	60.0
3001+82	WB	6.0	12.0	8.0	8.0	60.0
3002+07	WB	6.0	12.0	8.0	8.0	60.0
URBAN						
3049+39	EB	6.0	12.0	8.0	8.0	60.0
3056+76	EB	6.0	12.0	8.0	8.0	60.0
3056+92	EB	6.0	12.0	8.0	8.0	60.0
3072+69	EB	6.0	12.0	8.0	8.0	60.0
3083+00	EB	6.0	12.0	8.0	8.0	60.0
3083+00	EB	6.0	12.0	8.0	8.0	60.0
3083+65	EB	6.0	12.0	8.0	8.0	60.0
3084+47	WB	6.0	12.0	8.0	8.0	60.0
3084+77	WB	6.0	12.0	8.0	8.0	60.0
3086+71	WB	6.0	12.0	8.0	8.0	60.0
3088+45	WB	6.0	12.0	8.0	8.0	60.0
3097+52	WB	6.0	12.0	8.0	8.0	60.0
3104+75	EB	6.0	12.0	8.0	8.0	60.0
RURAL						
3134+07	WB	6.0	12.0	8.0	8.0	60.0
3134+10	EB	6.0	12.0	8.0	8.0	60.0
3148+97	WB	8.0	12.0	8.0	8.0	64.0
3148+97	EB	8.0	12.0	8.0	8.0	64.0
3159+16	WB	6.0	12.0	8.0	8.0	60.0
3196+16	EB	6.0	12.0	8.0	8.0	60.0
3196+16	WB	6.0	12.0	8.0	8.0	60.0
3200+07	EB	6.0	12.0	8.0	8.0	60.0
3200+07	WB	6.0	12.0	8.0	8.0	60.0
SUB-TOTAL:				216	216	1628
ANTICIPATED FAILURES (10%)				22	22	163
TOTAL:				238	238	1791

RAISED REFLECTIVE PAVEMENT MARKERS							
STA	TO	STA	LENGTH	AMBER		CRYSTAL	RAISED REFLECTIVE PAVEMENT MARKER REMOVAL
				1WAY	2WAY	1WAY	
			FEET	EACH	EACH	EACH	EACH
RURAL							
2976+50	TO	2993+79	1729		22		22
2993+79	TO	2998+14	435	22			22
2998+14	TO	3001+15	301		8		8
3001+15	TO	3007+80	665	33			33
3007+80	TO	3048+00	4020		50		50
3128+26	TO	3200+07	7181		90		90
2998+14	TO	3001+15	301			8	8
URBAN							
3048+00	TO	3084+45	3645			182	182
3084+45	TO	3085+52	107	BRIDGE OMISSION			
3085+52	TO	3128+26	4274			214	214
SUB-TOTAL:				55	169	403	
TOTAL:				628		628	

BUTT JOINT/TEMPORARY RAMP SCHEDULE				
STATION	LENGTH	WIDTH	PCC SURFACE REMOVAL-BUTT JOINT	TEMPORARY RAMPS
			SQ YD	SQ YD
RURAL				
BEGINNING	2976+50	10	25	27.8
ST ROSE RD.	2998+12	10	89	98.9
ENDING	3200+07	10	25	27.8
URBAN				
SN 014-0067 WB	3084+45	10	25	27.8
SN 014-0067 WB	3085+52	10	25	27.8
SN 014-0066 EB	3084+45	10	25	27.8
SN 014-0066 EB	3085+52	10	25	27.8
RAMP A	22+91.52	10	17	18.9
RAMP B	18+87.18	10	17	18.9
RAMP C	20+86.27	10	17	18.9
RAMP D	22+78.89	10	17	18.9
TOTAL:			341	20

MODEL: Default
 FILE: \\nrcs-pix\pub\harronm.dwg
 PROJECT: \\nrcs-pix\pub\harronm.dwg
 USER: millerraj
 PLOT SCALE: = 100.0000 ' / in.
 PLOT DATE: = 7/16/2020

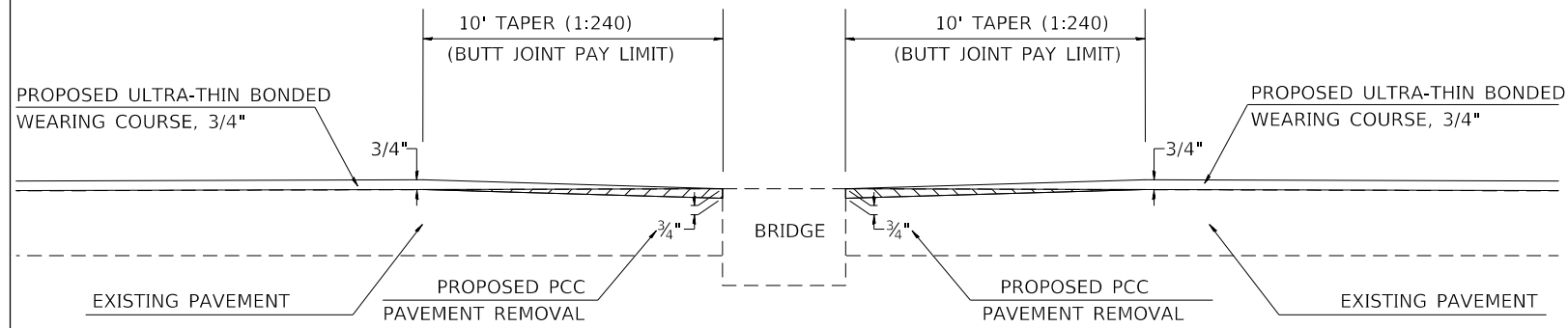
USER NAME = millerraj	DESIGNED -	REVISED -
	DRAWN -	REVISED -
PLOT SCALE = 100.0000 ' / in.	CHECKED -	REVISED -
PLOT DATE = 7/16/2020	DATE -	REVISED -

STATE OF ILLINOIS
DEPARTMENT OF TRANSPORTATION

SCHEDULE OF QUANTITIES

SCALE: NTS SHEET 1 OF SHEETS STA. TO STA.

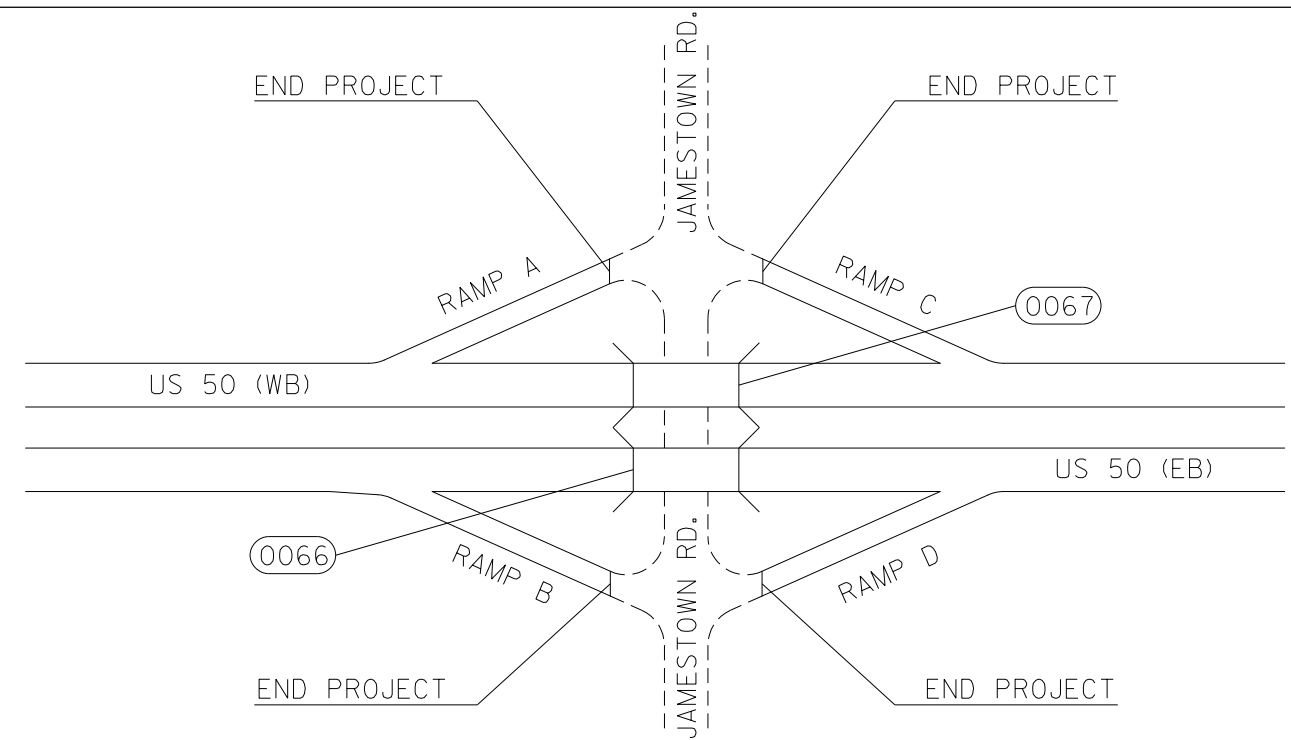
F.A.P. RTE.	SECTION	COUNTY	TOTAL SHEETS	SHEET NO.
327	14-14RS-2	CLINTON	10	9
CONTRACT NO. 76N13				
ILLINOIS FED. AID PROJECT				



PCC BUTT JOINT DETAIL

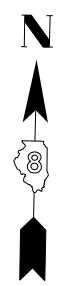
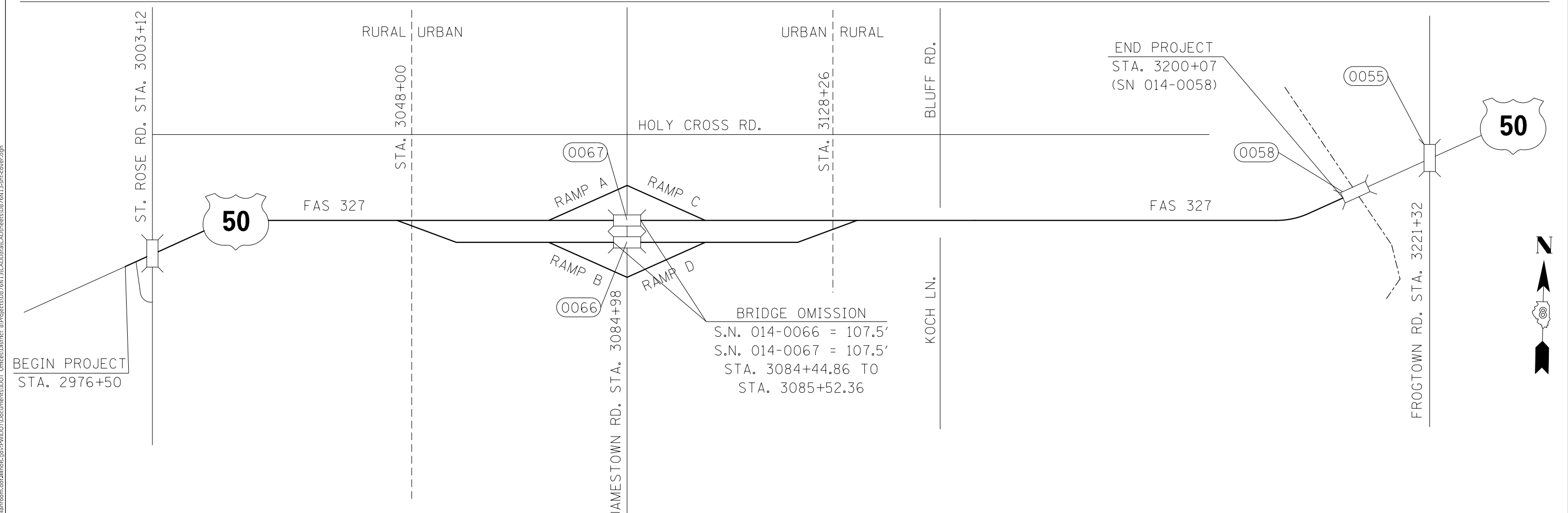
STA. 2976+50	RAMP A STA. 22+91.32
STA. 3084+44.86 EB/WB	RAMP B STA. 18+87.18
STA. 3085+52.36 EB/WB	RAMP C STA. 20+86.27
STA. 3200+07	RAMP D STA. 22+78.89

NOT TO SCALE



RAMP DETAIL

RAMP A STA. 22+91.32
RAMP B STA. 18+87.18
RAMP C STA. 20+86.27
RAMP D STA. 22+78.89



MODEL: Default
 FILE: h:\mfc_13\pub\harron.mxd
 PROJECT: \P:\DOT\Documents\DOT_Offices\harron\DOT_014-0066\014-0066.dwg
 PLOT DATE: 7/16/2020

USER NAME = millerraj	DESIGNED -	REVISED -
	DRAWN -	REVISED -
PLOT SCALE = 100,0000' / in.	CHECKED -	REVISED -
PLOT DATE = 7/16/2020	DATE -	REVISED -

**STATE OF ILLINOIS
DEPARTMENT OF TRANSPORTATION**

LOCATION MAP & DETAIL SHEET

SCALE: NTS SHEET 1 OF 1 SHEETS STA. TO STA.

F.A.P. RTE.	SECTION	COUNTY	TOTAL SHEETS	SHEET NO.
327	14-14R5-2	CLINTON	10	10
CONTRACT NO. 76N13				
ILLINOIS FED. AID PROJECT				