

STATE OF ILLINOIS  
DEPARTMENT OF TRANSPORTATION

F.A.I.	SECTION	COUNTY	TOTAL SHEETS	SHEET NO.
64	95-(5,6)PP-1	WASHINGTON	7	1
		ILLINOIS	CONTRACT NO. 76N97	

D-98-126-20

FOR INDEX OF SHEETS, SEE SHEET NO. 2

TRAFFIC DATA		
	IL 127 - I-51	I-51 - JEFFERSON COUNTY LINE
ADT (CONSTRUCTION YR - 2020):	28100	26700
MU%	28.1	24.6
SU%	2.9	3.1

**PROPOSED  
HIGHWAY PLANS**

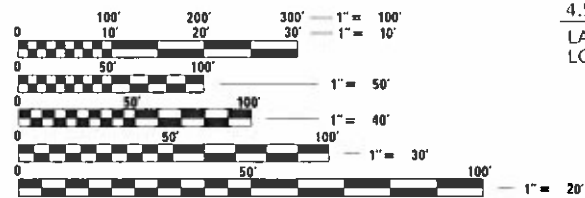
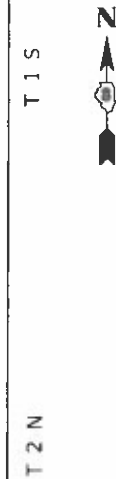
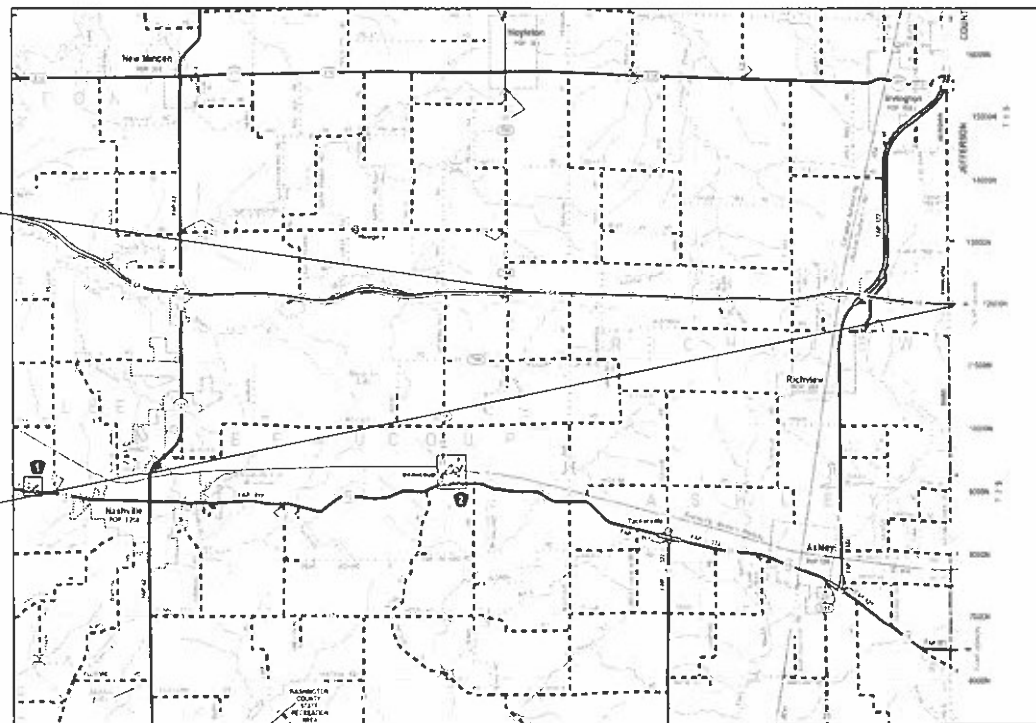
**FAI 64 (I-64)  
SECTION 95-(5,6)PP-1  
PATCHING - CM  
WASHINGTON COUNTY**

C-98-136-20



BEGIN PROJECT  
2.5 MI E. OF CH 11  
0.0 M.S.  
LATITUDE: 38.390083  
LONGITUDE: -89.2289593

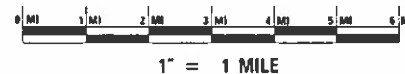
END PROJECT  
JEFFERSON COUNTY LINE  
4.50 M.S.  
LATITUDE: 38.3875549  
LONGITUDE: -89.1453088



FULL SIZE PLANS HAVE BEEN PREPARED USING STANDARD ENGINEERING SCALES. REDUCED SIZED PLANS WILL NOT CONFORM TO STANDARD SCALES. IN MAKING MEASUREMENTS ON REDUCED PLANS, THE ABOVE SCALES MAY BE USED.

J.U.L.I.E.  
JOINT UTILITY LOCATION INFORMATION FOR EXCAVATION  
1-800-892-0123  
OR 811

LOCATION MAP



GROSS LENGTH = 23,760.00 FT. = 4.50 MILE  
NET LENGTH = 23,760.00 FT. = 4.50 MILE

PROJECT ENGINEER: TIFFANY BRASE (618)346-3325  
PROJECT MANAGER: DIANA MURRAY (618)346-3207

CONTRACT NO. 76N97

STATE OF ILLINOIS  
DEPARTMENT OF TRANSPORTATION

SUBMITTED Aug. 11, 2020  
*Raith Roberts*  
REGIONAL ENGINEER

October 2, 2020  
*Scott A. Elk*  
ENGINEER OF DESIGN AND ENVIRONMENT

October 2, 2020  
*James J. Jan*  
DIRECTOR OF HIGHWAYS PROJECT IMPLEMENTATION

PRINTED BY THE AUTHORITY  
OF THE STATE OF ILLINOIS

**INDEX OF SHEETS**

- 1 COVER SHEET
- 2 INDEX OF SHEETS, HIGHWAY STANDARDS, GENERAL NOTES & COMMITMENTS
- 3 SUMMARY OF QUANTITIES
- 4 LOCATION MAP
- 5 TYPICAL SECTIONS
- 6-7 SCHEDULE OF QUANTITIES

**HIGHWAY STANDARDS**

- 000001-07 STANDARD SYMBOLS, ABBREVIATIONS AND PATTERNS
- 001006 DECIMAL OF AN INCH AND OF A FOOT
- 442001-04 CLASS A PATCHES
- 701101-05 OFF-RD OPERATIONS, MULTILANE, 15' (4.5m) TO 24"(600mm) FROM PAVEMENT EDGE
- 701106-02 OFF-RD OPERATIONS, MULTILANE, MORE THAN 15' (4.5m) AWAY
- 701400-09 APPROACH TO LANE CLOSURE, FREEWAY/EXPRESSWAY
- 701401-12 LANE CLOSURE, FREEWAY/EXPRESSWAY
- 701406-12 LANE CLOSURE, FREEWAY/EXPRESSWAY, DAY OPERATIONS ONLY
- 701411-09 LANE CLOSURE, MULTILANE, AT ENTRANCE OR EXIT RAMP FOR SPEEDS ≥ 45MPH
- 701426-09 LANE CLOSURE, MULTILANE, INTERMITTENT OR MOVING OPER., FOR SPEEDS ≥ 45MPH
- 701428-01 TRAFFIC CONTROL SETUP AND REMOVAL FREEWAY/EXPRESSWAY
- 701901-08 TRAFFIC CONTROL DEVICES
- 780001-05 TYPICAL PAVEMENT MARKINGS
- 781001-04 TYPICAL APPLICATION RAISED REFLECTIVE PAVEMENT MARKERS

**GENERAL NOTES**

- UTILITIES KNOWN TO HAVE FACILITIES WITHIN THE PROJECT AREA ARE AS FOLLOWS:

UTILITY	ABOVE GROUND	BELOW GROUND
*AMEREN ILLINOIS (GAS & ELECTRIC)	X	X
*AT& T ILLINOIS (COMMUNICATIONS)	X	X
*CHARTER COMMUNICATIONS, INC. (CABLE TV)	X	X
*CLEARWAVE COMMUNICATIONS (COMMUNICATIONS)	X	X
*COUNTYMARK COOPERATIVE, LLP (PIPELINE)		X
*VILLAGE OF RICHVIEW (WATER)		X
*FRONTIER COMMUNICATIONS (COMMUNICATION)	X	X
*TRI-COUNTY ELECTRIC COOPERATIVE, INC. (ELECTRIC TRANSMISSION)	X	X

- MEMBERS OF J.U.L.I.E. (800-892-0123 OR 811) ARE INDICATED BY AN \*. NON-JULIE MEMBERS MUST BE NOTIFIED INDIVIDUALLY.
- THE CONTRACTOR AND THE ENGINEER SHALL BE AWARE THAT NO SURVEY WAS PERFORMED FOR THIS PROJECT, THE STATIONING, TOPOGRAPHY AND QUANTITIES SHOWN ON THESE PLANS WERE CREATED USING MICROFILM AND FIELD MEASUREMENTS. ALL SHALL BE ASSUMED TO BE APPROXIMATE. THE CONTRACTOR SHALL VERIFY DIMENSIONS AND CONDITIONS IN THE FIELD PRIOR TO CONSTRUCTION AND ORDERING OF MATERIALS.
  - HIGH EARLY STRENGTH CONCRETE FOR PAVEMENT PATCHING WILL BE ALLOWED.
  - ALL PATCHES 100 FT. LONG OR MORE SHALL INCLUDE PROPOSED PAINT PAVEMENT MARKING, 4" - WHITE AT THE EDGELINE AND CENTERLINE. PAINT PAVEMENT MARKING SHALL BE PAID FOR SEPARATELY AND IS NOT INCLUDED AS A PART OF THE PATCH. THE PLAN QUANTITY IS ESTIMATED TO BE 2440 FT.
  - AN ESTIMATED QUANTITY OF 16 EACH OF RRPMS HAS BEEN INCLUDED IN THE PLANS BASED ON PATCHES 100 FT. LONG OR MORE.
  - THE 4" DEPTH OF THE PARTIAL DEPTH PATCHING SHALL BE CONSTRUCTED IN ONE 2-1/2" LIFT OF BINDER AND ONE 1-1/2" LIFT OF POLY SURFACE.

MIXTURE REQUIREMENTS

ROUTE	FAI 64 (I-64)
SECTION	95-(5.6)PP-1
COUNTY	WASHINGTON
CONTRACT	76N97

DESCRIPTION:	PATCHING - CM - I-64 FROM 2.5 MI E OF CH 11 TO JEFFERSON COUNTY LINE.
--------------	---

ADT (CONSTRUCTION YR):	28100
MU %	28.1
SU%	2.9
20 YR. ESAL'S:	47.42

MIXTURE USE	PARTIAL DEPTH PATCHING	
	POLY SURFACE	BINDER
AC/PG	SBS PG 76-22	SBS PG 64-22
DESIGN AIR VOIDS	SEE SPECIAL PROVISION	SEE SPECIAL PROVISION
RAP% (MAX)	4.0% @ Ndes=90	4.0% @ Ndes=90
MIX COMPOSITION	IL 9.5	IL 19.0
(GRADATION MIXTURE)	MIXTURE "E"	MIXTURE "B"
FRICTION AGG	QC/QA	QC/QA

Plan quantities for HMA items are calculated using a unit weight of 112 lb/sq yd/in (59.8 kg/sq m/25 mm thickness).

**COMMITMENTS**

NONE

REV. - MS

MODEL: Default  
 FILE: Main1.dwg  
 PLOT: PLOTROOM.dwt  
 ILLINOIS.GOV:PWIDOT\Documents\DOT\_Offices\District\_8\Projects\IDOT\76N97\CADDData\CAD\Notes\IDOT\76N97-shc-plan.dgn

USER NAME = murrayda	DESIGNED -	REVISED -
	DRAWN -	REVISED -
PLOT SCALE = 2.0000' / in.	CHECKED -	REVISED -
PLOT DATE = 8/10/2020	DATE -	REVISED -

**STATE OF ILLINOIS  
DEPARTMENT OF TRANSPORTATION**

**INDEX OF SHEETS, HIGHWAY STANDARDS  
GENERAL NOTES & COMMITMENTS**

SCALE: SHEET 1 OF 1 SHEETS STA. TO STA.

F.A.I.	SECTION	COUNTY	TOTAL SHEETS	SHEET NO.
64	95-(5.6)PP-1	WASHINGTON	7	2
CONTRACT NO. 76N97				
ILLINOIS FED. AID PROJECT				

CODE NO.	ITEM	UNIT	TOTAL QUANTITY	100% STATE	CONSTR. CODE
				ROADWAY	RURAL
44200577	CLASS A PATCHES, TYPE II, 12 INCH	SQ YD	99	99	
44200581	CLASS A PATCHES, TYPE III, 12 INCH	SQ YD	20	20	
44200583	CLASS A PATCHES, TYPE IV, 12 INCH	SQ YD	516	516	
44213000	PATCHING REINFORCEMENT	SQ YD	635	635	
44213200	SAW CUTS	FOOT	2134	2134	
44213204	TIE BARS 3/4"	EACH	245	245	
67100100	MOBILIZATION	L SUM	1	1	
70100420	TRAFFIC CONTROL AND PROTECTION, STANDARD 701411	EACH	4	4	
70100700	TRAFFIC CONTROL AND PROTECTION, STANDARD 701406	L SUM	1	1	
70100800	TRAFFIC CONTROL AND PROTECTION, STANDARD 701401	L SUM	1	1	
70200100	NIGHTTIME WORK ZONE LIGHTING	L SUM	1	1	
78001110	PAINT PAVEMENT MARKING - LINE 4"	FOOT	2440	2440	
* 78100100	RAISED REFLECTIVE PAVEMENT MARKER	EACH	16	16	
X4406240	PARTIAL DEPTH REMOVAL, TYPE II, 4"	SQ YD	594	594	

\* SPECIALTY ITEM

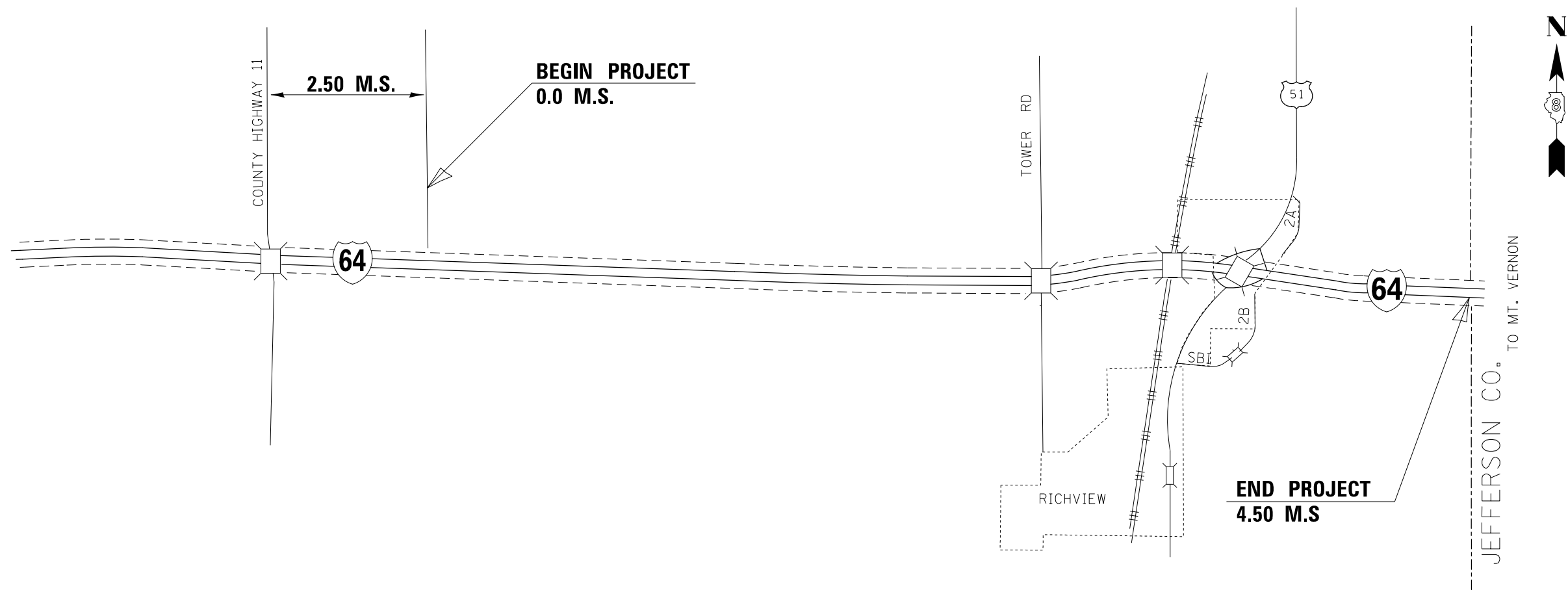
CODE NO.	ITEM	UNIT	TOTAL QUANTITY	100% STATE	CONSTR. CODE
				ROADWAY	RURAL
X4406440	PARTIAL DEPTH REMOVAL, TYPE III, 4"	SQ YD	188	188	
X4406640	PARTIAL DEPTH REMOVAL, TYPE IV, 4"	SQ YD	614	614	
X4421000	PARTIAL DEPTH PATCHING	TON	312.1	312.1	
Ø Z0076604	TRAINEES TRAINING PROGRAM GRADUATE	HOUR	500	500	

Ø 0042

MODEL: Default  
FILE: Model\_Planplanroom.dwg  
PROJECT: \Projects\DOT\Documents\DOT - Office\Birtct - \Projects\DOT\76N97\CADD\Drawings\CAD\Sheet\DOT\76N97-shc-plan.dgn

REV. - MS

USER NAME = murrayda	DESIGNED -	REVISED -	<b>STATE OF ILLINOIS DEPARTMENT OF TRANSPORTATION</b>	<b>SUMMARY OF QUANTITIES</b>			F.A.I.	SECTION	COUNTY	TOTAL SHEETS	SHEET NO.
DRAWN -	REVISIED -	64					95-(5,6)PP-1	WASHINGTON	7	3	
PLOT SCALE = 2,0000 ' / in.	CHECKED -	REVISED -		CONTRACT NO. 76N97							
PLOT DATE = 8/10/2020	DATE -	REVISED -		SCALE:	SHEET 1	OF 1	SHEETS	STA.	TO STA.	ILLINOIS FED. AID PROJECT	



**LOCATION MAP**

NOT TO SCALE

MODEL: Default  
 FILE: h:\m\c:\pic\uplanroom\data\illinois.gov\PIWDOT\Documents\IDOT\_Offices\IDOT\c:\projects\076997\CADD\data\CAD\pieces\076997-shc-plan.dgn

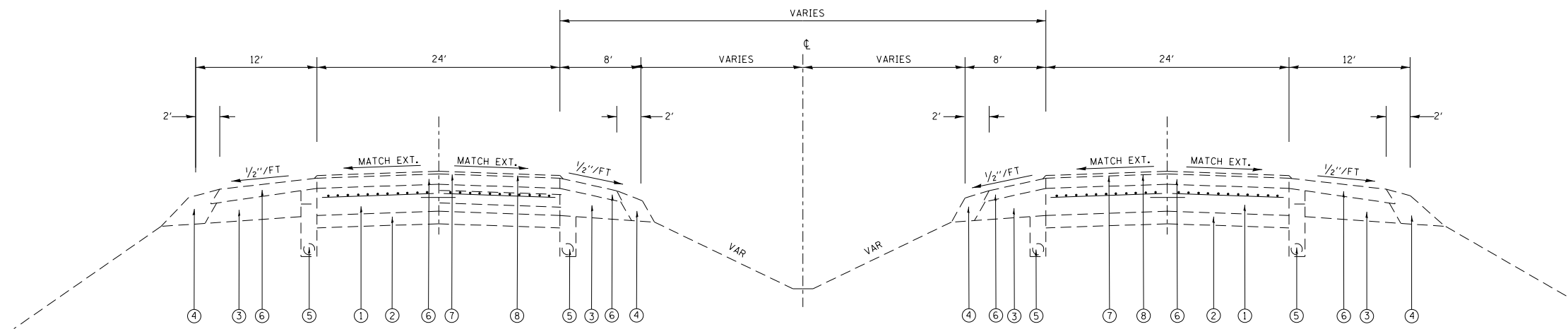
USER NAME = murrayda	DESIGNED -	REVISED -
	DRAWN -	REVISED -
PLOT SCALE = 2,000' / in.	CHECKED -	REVISED -
PLOT DATE = 8/10/2020	DATE -	REVISED -

**STATE OF ILLINOIS  
 DEPARTMENT OF TRANSPORTATION**

**LOCATION MAP**

SCALE: SHEET 1 OF 1 SHEETS STA. TO STA.

F.A.I.	SECTION	COUNTY	TOTAL SHEETS	SHEET NO.
64	95-(5,6)PP-1	WASHINGTON	7	4
CONTRACT NO. 76N97				
ILLINOIS FED. AID PROJECT				



EXISTING TYPICAL SECTION  
 FAI ROUTE 64  
 0.00 M.S. TO 4.50 M.S.

**LEGEND**

- ① EXISTING CRPCC PAVEMENT, 8"
- ② EXISTING STABILIZED SUB-BASE, 4"
- ③ EXISTING STABILIZED SHOULDER, 8"
- ④ EXISTING AGGREGATE SHOULDER
- ⑤ EXISTING PIPE UNDERDRAINS, 4"
- ⑥ EXISTING HOT-MIX ASPHALT OVERLAY - 3 1/4"
- ⑦ EXISTING BITUMINOUS MATERIALS (PRIME COAT)
- ⑧ EXISTING MICRO-SURFACING, 2 PASSES

MODEL: Default  
 FILE: Model1\_Plan.dwg  
 PROJECT: I:\Projects\DOT\Documents\DOT\_Offices\District 8\Projects\DOT\76N97\CADD\Drawings\DOT\76N97-5-1.dwg

USER NAME = murrayda	DESIGNED -	REVISED -
	DRAWN -	REVISED -
PLOT SCALE = 2,0000' / in.	CHECKED -	REVISED -
PLOT DATE = 8/10/2020	DATE -	REVISED -

**STATE OF ILLINOIS  
 DEPARTMENT OF TRANSPORTATION**

<b>TYPICAL SECTIONS</b>			
SCALE:	SHEET 1	OF 1 SHEETS	STA. TO STA.

F.A.I.	SECTION	COUNTY	TOTAL SHEETS	SHEET NO.
64	95-(5,6)PP-1	WASHINGTON	7	5
CONTRACT NO. 76N97				
ILLINOIS FED. AID PROJECT				



**PARTIAL DEPTH PATCHING SCHEDULE**

MILE STATION	EB / WB	DL / PL	DIMENSIONS		PARTIAL DEPTH REMOVAL, TY II, 4"	PARTIAL DEPTH REMOVAL, TY III, 4"	PARTIAL DEPTH REMOVAL, TY IV, 4"	PARTIAL DEPTH PATCHING
			LENGTH	WIDTH	SQ YD	SQ YD	SQ YD	TON
2.0	EB	DL	50	6	34			7.5
2.6	EB	PL	30	12	40			9.0
2.6	EB	DL	30	12	40			9.0
2.7	EB	PL	30	12	40			9.0
2.7	EB	DL	30	12	40			9.0
3.0	EB	PL	30	12	40			9.0
3.0	EB	DL	30	12	40			9.0
3.0	EB	PL	50	12		67		14.9
3.0	EB	DL	50	12		67		14.9
4.2	EB	DL	80	6		54		11.9
3.2	WB	PL	30	12	40			9.0
3.2	WB	DL	30	12	40			9.0
3.2	WB	PL	30	12	40			9.0
3.2	WB	DL	30	12	40			9.0
2.8	WB	DL	30	12	40			9.0
2.8	WB	PL	30	12	40			9.0
2.8	WB	DL	30	12	40			9.0
2.8	WB	PL	30	12	40			9.0
2.2	WB	DL	720	6			480	107.5
1.8	WB	DL	200	6			134	29.9
<b>TOTAL:</b>					<b>594</b>	<b>188</b>	<b>614</b>	<b>312.1</b>

MODEL: Default  
 FILE: Model: P:\pub\planroom.dwg  
 PROJECT: I:\Projects\DOT\Documents\DOT - Offices\Bartlett - B\Projects\DOT\76N97\CAD\Drawings\DOT\76N97-Subplan.dgn

USER NAME = murrayda	DESIGNED -	REVISED -
	DRAWN -	REVISED -
PLOT SCALE = 2,000' / in.	CHECKED -	REVISED -
PLOT DATE = 8/10/2020	DATE -	REVISED -

**STATE OF ILLINOIS  
 DEPARTMENT OF TRANSPORTATION**

**SCHEDULE OF QUANTITIES**

SCALE: SHEET 2 OF 2 SHEETS STA. TO STA.

F.A.I.	SECTION	COUNTY	TOTAL SHEETS	SHEET NO.
64	95-(5,6)PP-1	WASHINGTON	7	7
CONTRACT NO. 76N97				
ILLINOIS FED. AID PROJECT				