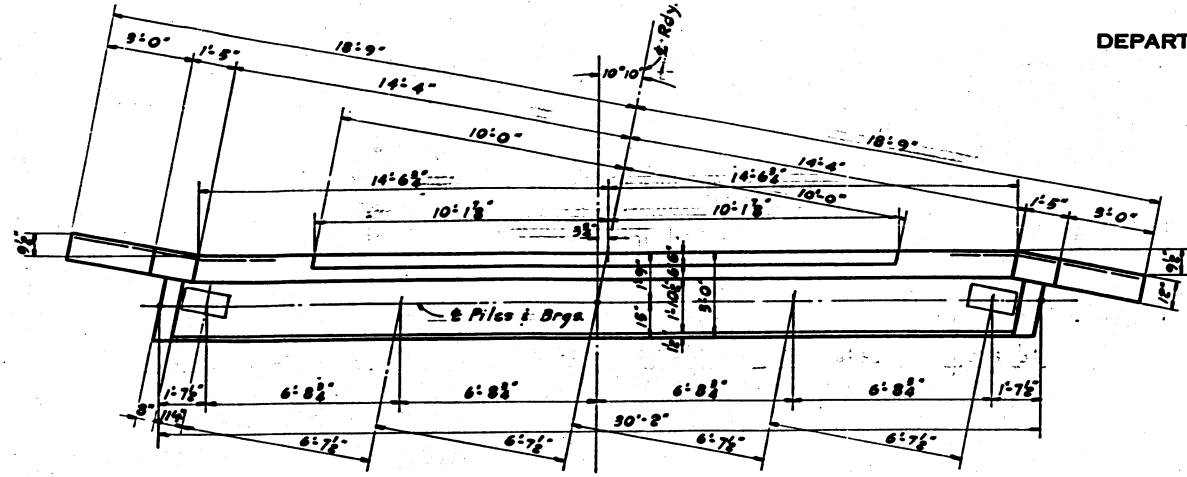
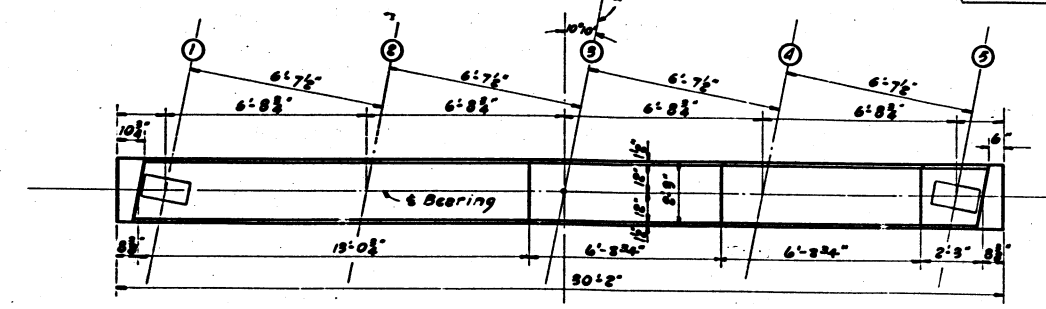


STATE OF ILLINOIS
DEPARTMENT OF PUBLIC WORKS & BUILDINGS
DIVISION OF HIGHWAYS

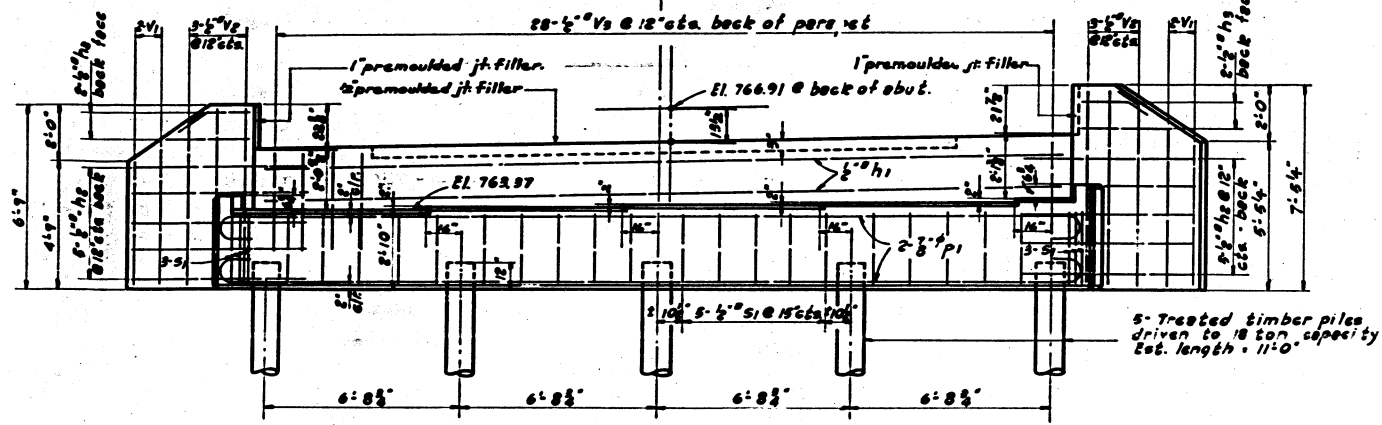
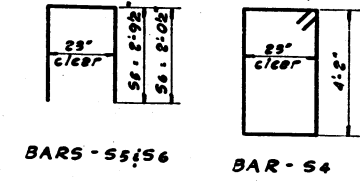
ROAD DIST. NO. 7	SECTION 22B	COUNTY Union	TOTAL SHEETS 125	SHEET NO. 120	SHEET NO. 4
F.A. PROJ. 391			F.S. SHEETS 4		



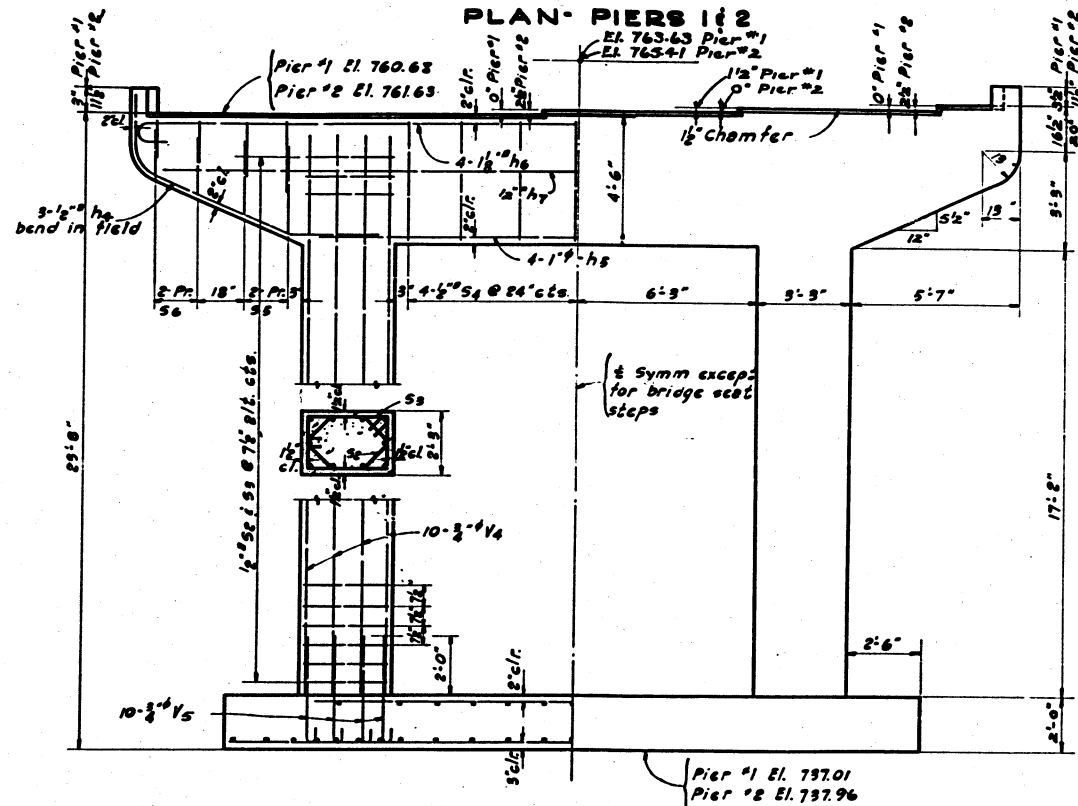
PLAN



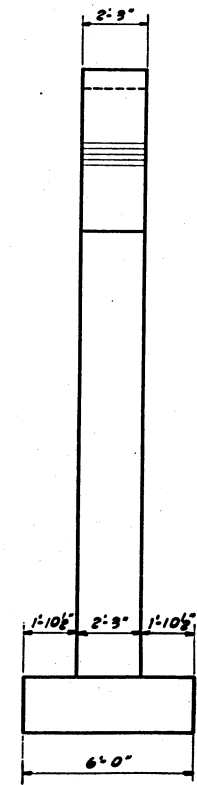
PLAN - PIERS 1 & 2



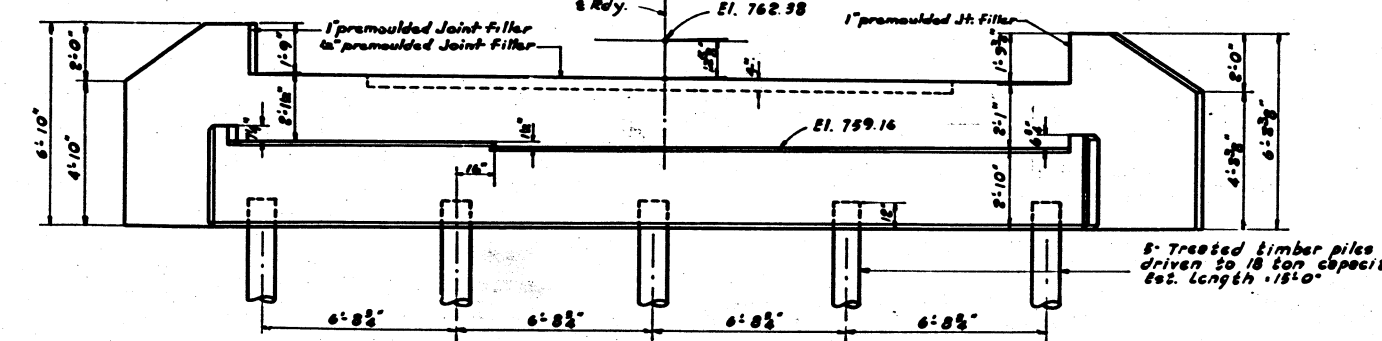
ELEVATION - W. ABUT.



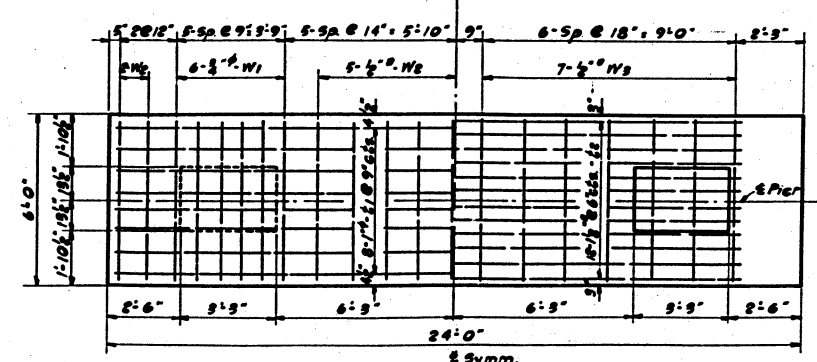
ELEVATION - PIERS 1 & 2



END VIEW



ELEVATION - E. ABUT.



FOOTING PLAN

PIERS 1 & 2 BILL OF MATERIAL

BAR NO.	SIZE	LENGTH	BAR NO.	SIZE	LENGTH
h4	12	20'-0"	V4	40	20'-0"
h5	8	18'-0"	V5	40	4'-9"
h6	8	32'-6"			
h7	4	29'-0"	W1	16	1'-6"
S2	66	5'-3"	W2	24	1'-9"
S3	66	11'-0"	W3	28	1'-9"
S4	14	15'-3"	W4	24	2'-9"
S5	16	7'-6"	W5	26	2'-0"
S6	16	6'-0"	W6	28	5'-9"

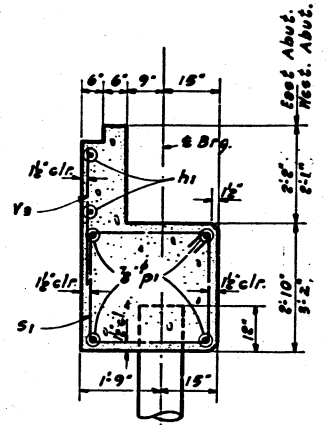
Class X Concrete Cu. Yds. 58.4
Reinforcement Bars Lbs. 8220.
Rock Excav. for Structures Cu. Yds. 27.0

EAST & WEST ABUTS. BILL OF MATERIAL

BAR NO.	SIZE	LENGTH	BAR NO.	SIZE	LENGTH	QUANTITIES
h1	4	29'-0"	S1	52	11'-3"	Class X Concrete Cu. Yds. 28.2
h2	20	6'-3"	V1	8	4'-6"	Reinforcement Bars Lbs. 1500
h3	8	3'-0"	V2	12	6'-6"	Treated piles Lin. Ft. 130
PI	8	32'-3"	V3	56	5'-3"	

COMPUTED *E. Skills*
CHECKED *C. J. Hopper*
DRAWN *C. J.*
CHECKED *omit*
ASSEMBLED
CHECKED

EXAMINED *A. F. Burek* 10-21-1940
PASSED *W. J. ...*
APPROVED *...*



SEC. AT & RDY. ABUTS.

F.A. PROJ. 391
F.A. RTE. 144 SEC. 22-B
UNION COUNTY
STA. 349+00