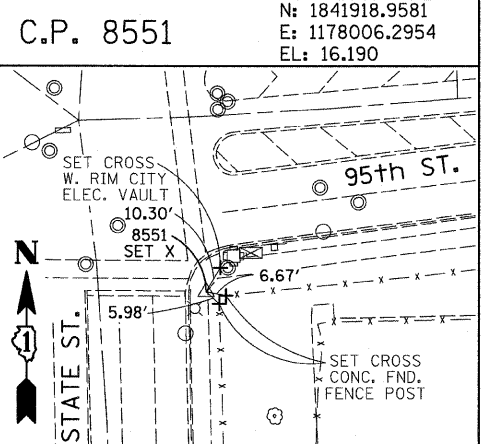
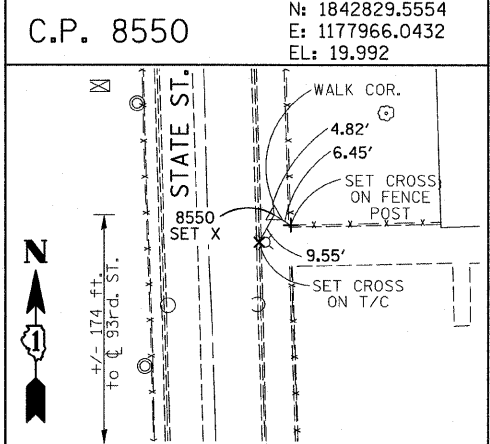
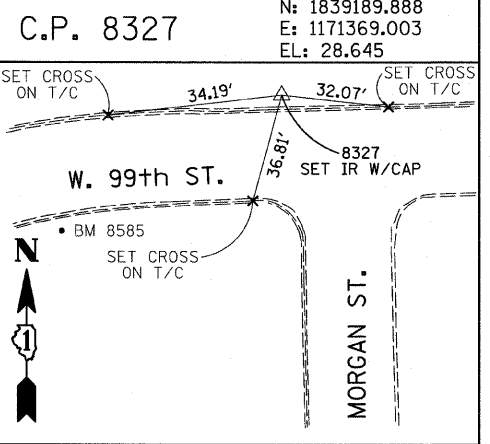
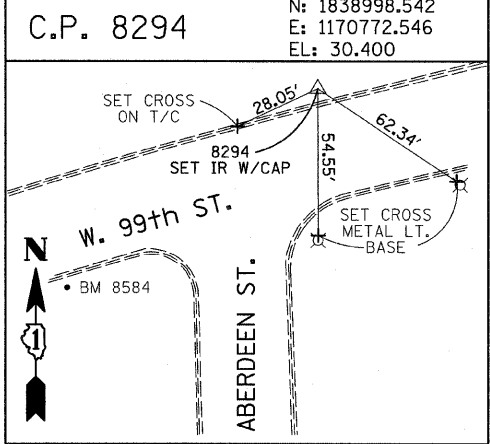
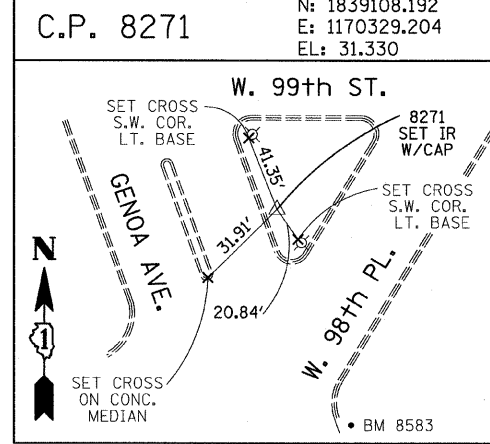
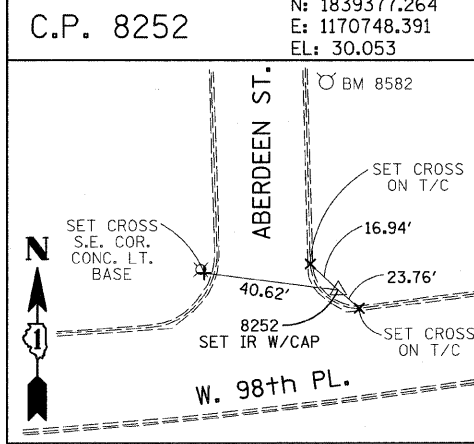
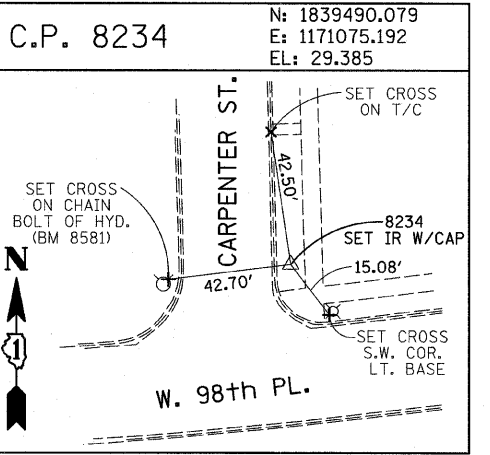
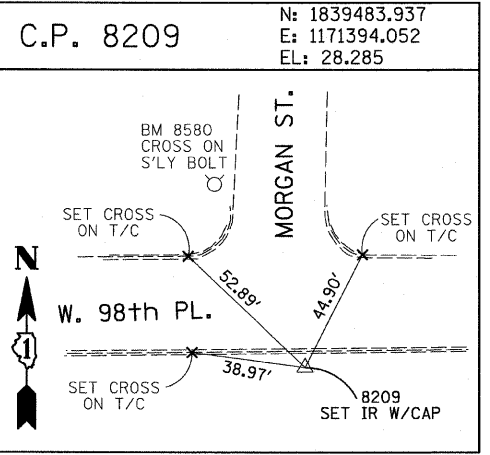
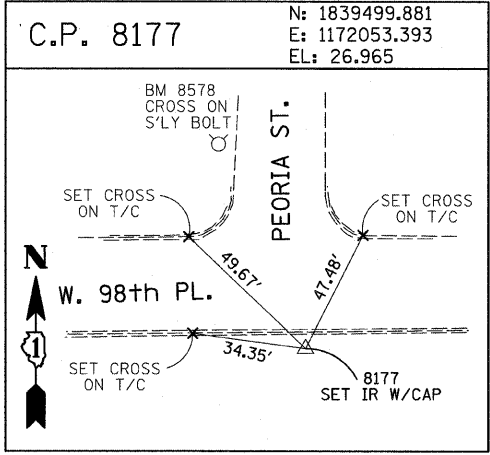
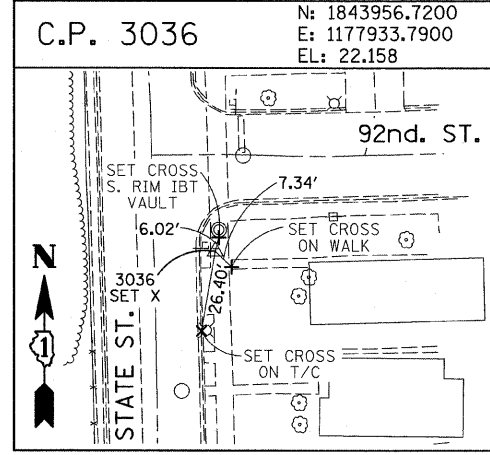
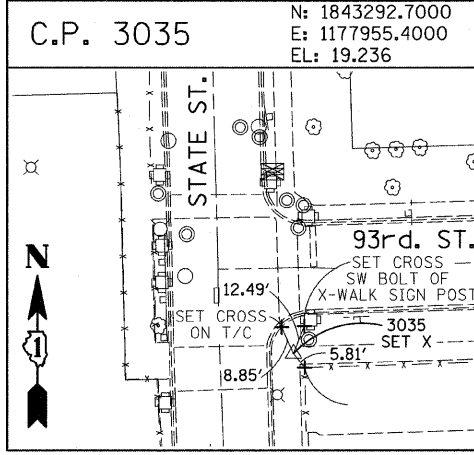
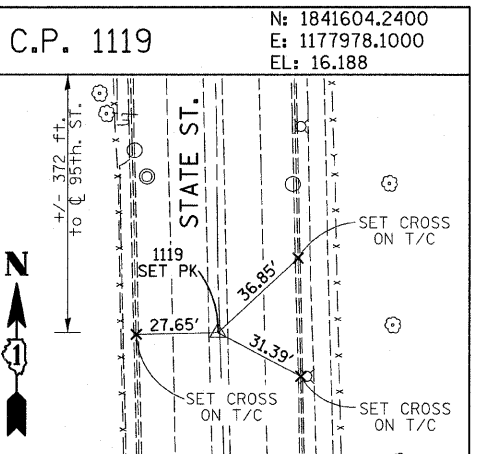
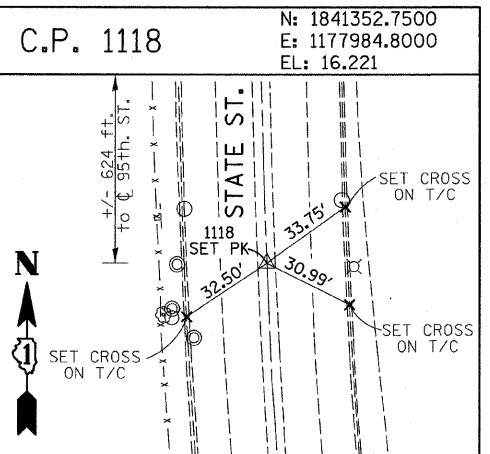
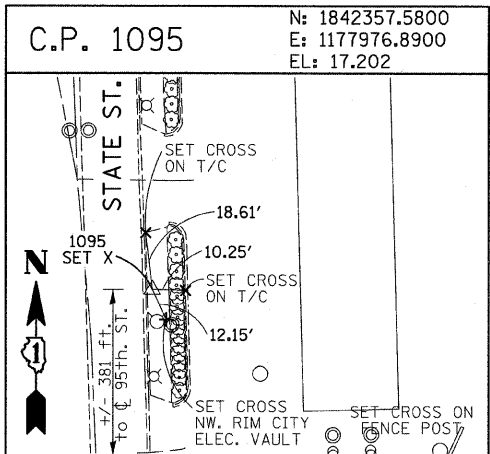
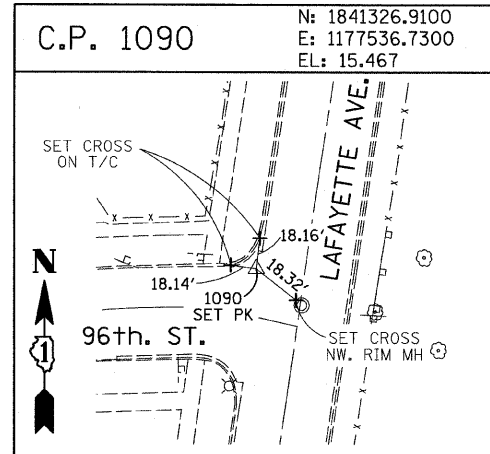
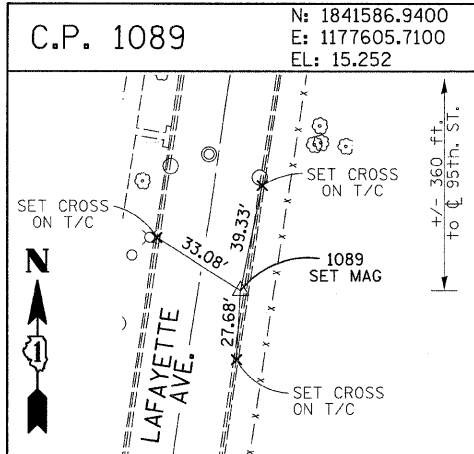


F.A.I. RTE.	SECTION	COUNTY	TOTAL SHEETS	SHEET NO.
94	2005-068 LS	COOK	58	17
STA. 153+08 (SB T-57) TO STA. 1214+25 (SB T-94)				
STA. 237+16 (NB I-57) TO STA. 2213+00 (NB I-94)				
FED. ROAD DIST. NO. ILLINOIS FED. AID PROJECT				

60A74



American Surveying Consultants, P.C.
 1577 Ploek Rd., Chicago, IL 60611 805 N. Northwest Highway, Chicago, IL 60611

REVISIONS	
NAME	DATE

ILLINOIS DEPARTMENT OF TRANSPORTATION
 F.A.I. 94 (DAN RYAN EXPRESSWAY)
 SURVEY TIES FOR CONTROL POINTS
 SHEET 6 OF 7
 SCALE: 1"=30'
 DATE: JUNE 20, 2008
 DRAWN BY: GSP
 CHECKED BY: MMW

6/20/2008 10:25:31 AM