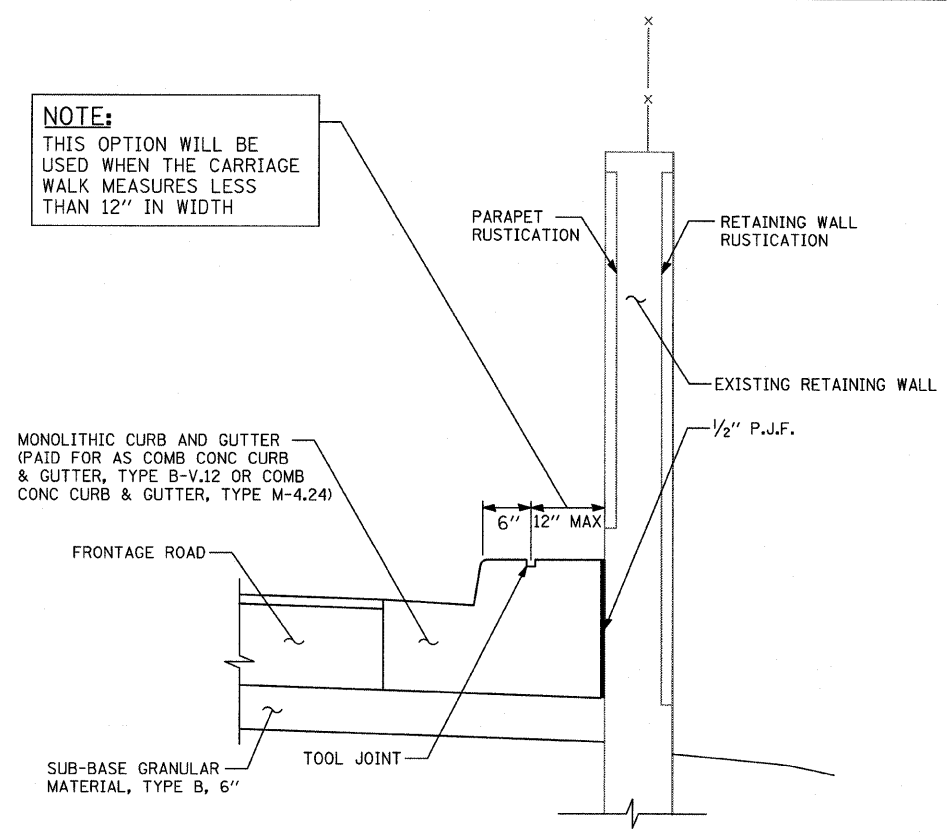


| F.A.I. RTE. | SECTION | COUNTY | TOTAL SHEETS | SHEET NO. |
|---|-------------|--------|------------------|-----------|
| 94 | 2005-068 LS | COOK | 58 | 46 |
| STA. 153+09 (SB 1-57) TO STA. 1214+95 (SB 1-94) | | | | |
| STA. 257+76 (NB 1-57) TO STA. 2213+00 (NB 1-94) | | | | |
| FED. ROAD DIST. NO. ILLINOIS | | | FED. AID PROJECT | |

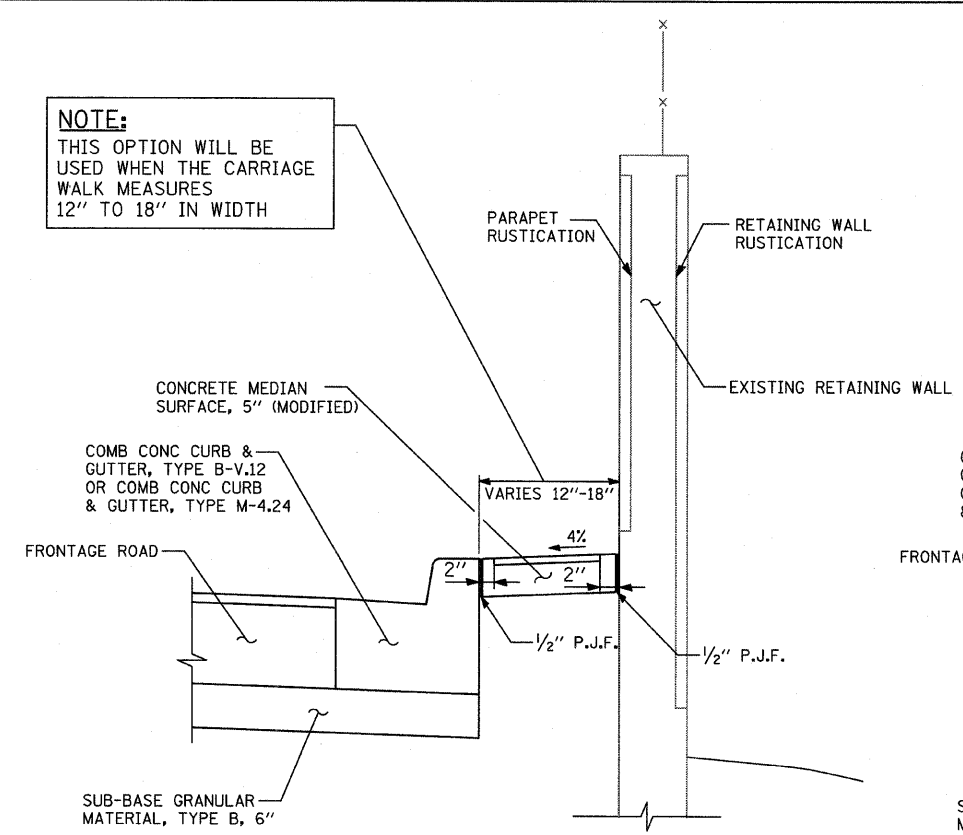
60A74

NOTE:
THIS OPTION WILL BE USED WHEN THE CARRIAGE WALK MEASURES LESS THAN 12" IN WIDTH



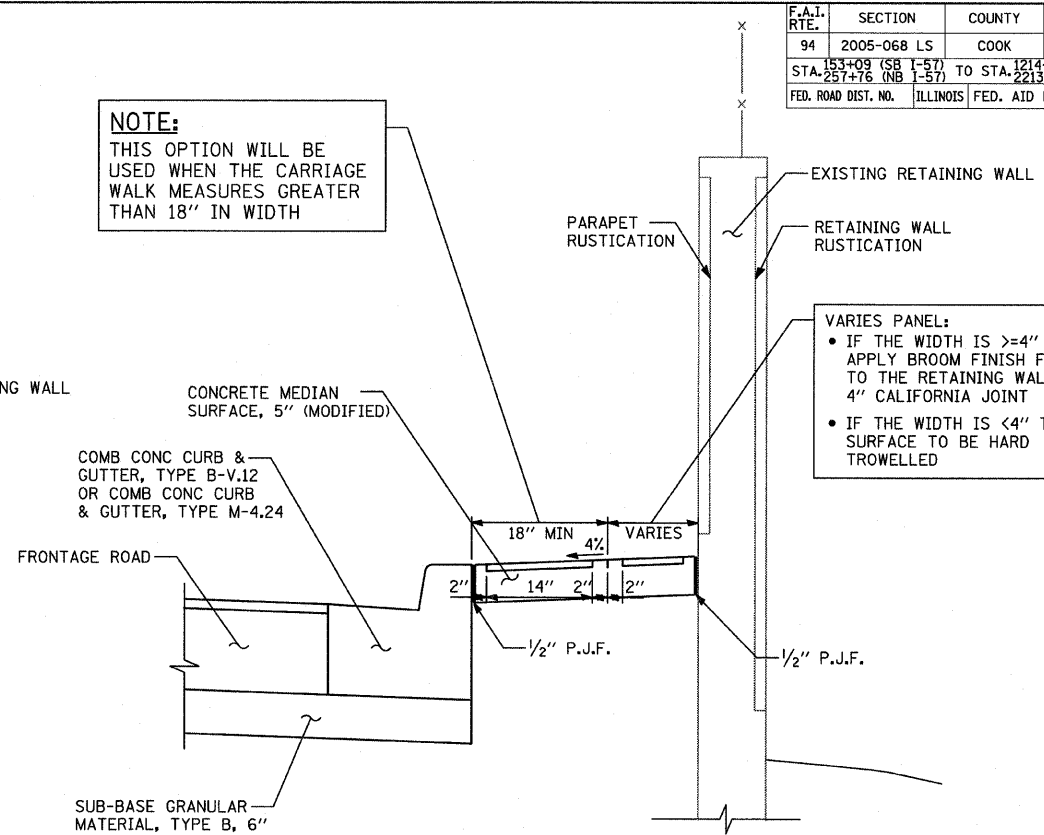
SECTION - CARRIAGE WALK "A"
WIDTH < 12"

NOTE:
THIS OPTION WILL BE USED WHEN THE CARRIAGE WALK MEASURES 12" TO 18" IN WIDTH



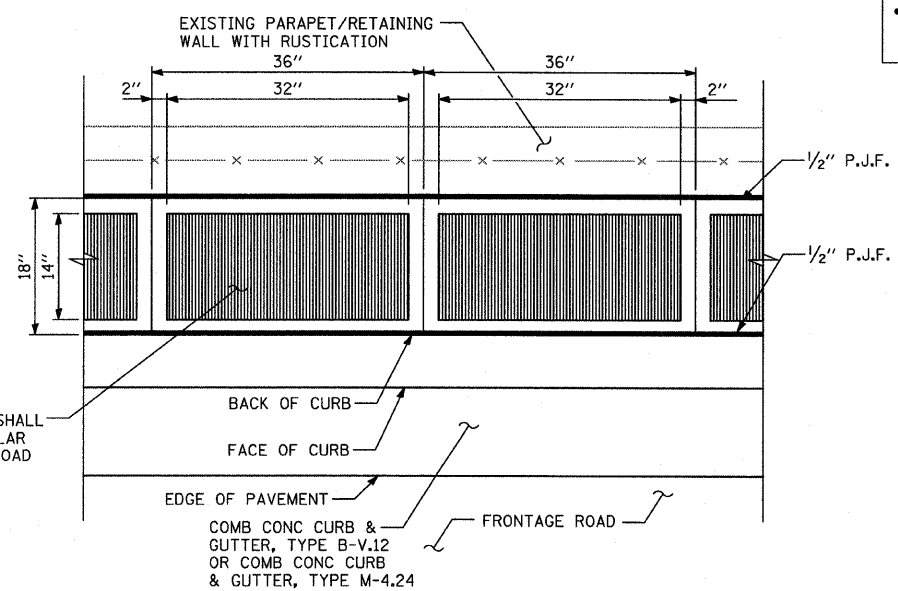
SECTION - CARRIAGE WALK "B"
WIDTH = 12" TO 18"

NOTE:
THIS OPTION WILL BE USED WHEN THE CARRIAGE WALK MEASURES GREATER THAN 18" IN WIDTH



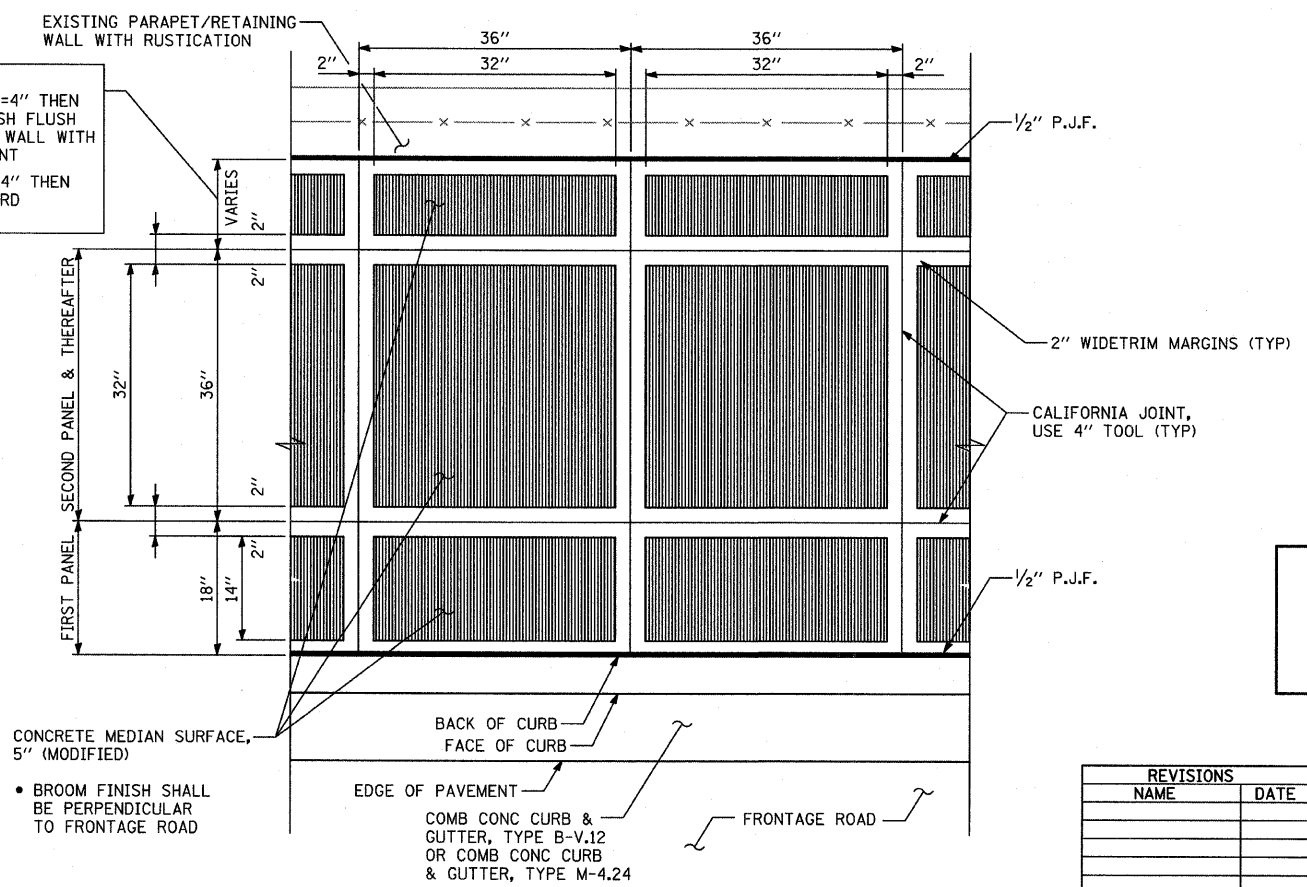
SECTION - CARRIAGE WALK "C"
WIDTH > 18"

VARIES PANEL:
• IF THE WIDTH IS $\geq 4"$ THEN APPLY BROOM FINISH FLUSH TO THE RETAINING WALL WITH 4" CALIFORNIA JOINT
• IF THE WIDTH IS $< 4"$ THEN SURFACE TO BE HARD TROWELLED



PLAN DETAIL "A": COORDINATE WITH CARRIAGE WALK "B"
CALIFORNIA FINISH

VARIES PANEL:
• IF THE WIDTH IS $\geq 4"$ THEN APPLY BROOM FINISH FLUSH TO THE RETAINING WALL WITH 4" CALIFORNIA JOINT
• IF THE WIDTH IS $< 4"$ THEN SURFACE TO BE HARD TROWELLED



PLAN DETAIL "B": COORDINATE WITH CARRIAGE WALK "C"
CALIFORNIA FINISH

NOTE:
NOT ALL ITEMS SHOWN IN THIS DETAIL ARE PROPOSED. SEE PLANS FOR PROPOSED ITEMS.

| REVISIONS | |
|-----------|------|
| NAME | DATE |
| | |
| | |
| | |
| | |
| | |
| | |
| | |
| | |
| | |
| | |

ILLINOIS DEPARTMENT OF TRANSPORTATION
F.A.I. 94 (DAN RYAN EXPRESSWAY)
CONCRETE MEDIAN SURFACE, 5" (MODIFIED) WITH CALIFORNIA FINISH DETAIL
SCALE: NONE
DATE: JUNE 20, 2008
DRAWN BY: MPG
CHECKED BY: JPM

TYLIN INTERNATIONAL

6/20/2008 10:27:26 AM P:\02\31\Road\222\mcs222\60A74.dwg