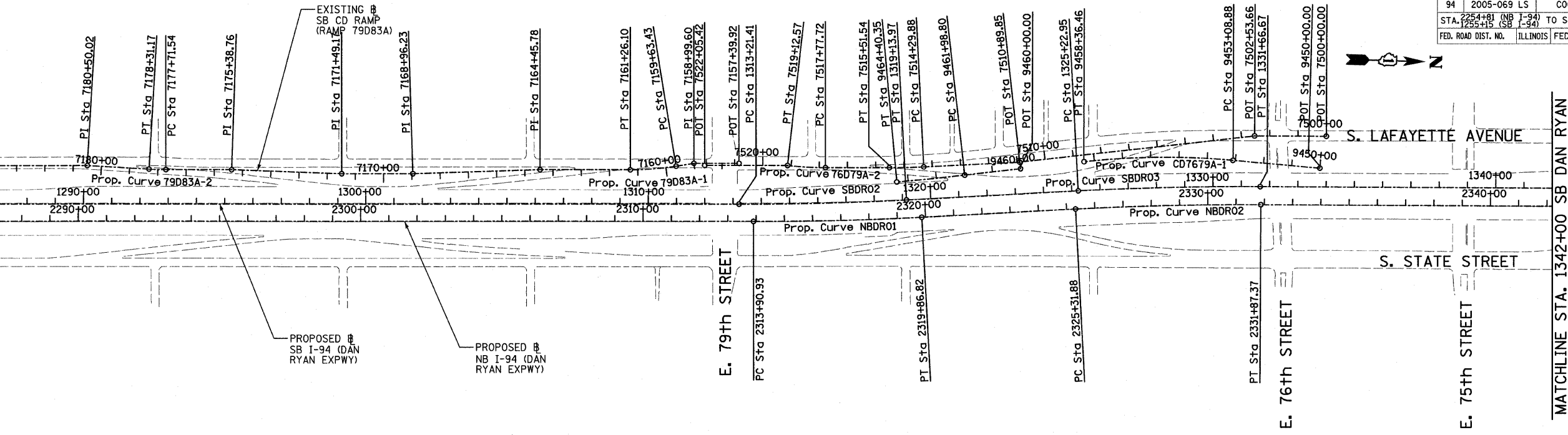


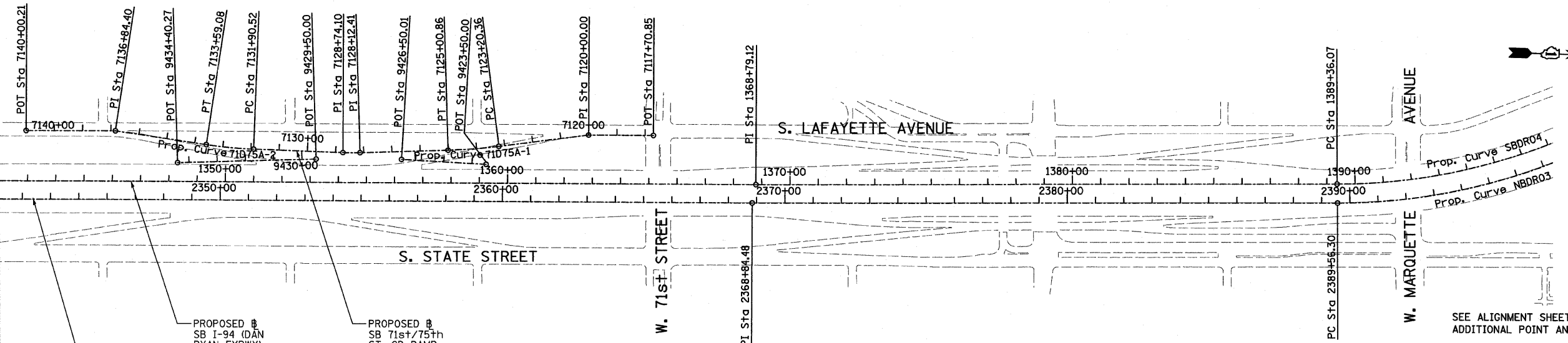
F.A.I. RTE.	SECTION	COUNTY	TOTAL SHEETS	SHEET NO.
94	2005-069 LS	COOK	60	10
STA. 1287+00 (NB I-94) TO STA. 1342+00 (SB I-94)		TO STA. 1287+00 (NB I-94) TO STA. 1342+00 (SB I-94)		
FED. ROAD DIST. NO.		ILLINOIS FED. AID PROJECT		60A75

SEE SHEET 2 OF 3  
MATCHLINE STA. 1287+00 SB DAN RYAN



Prop. Curve NBDRO1	Prop. Curve NBDRO2	Prop. Curve NBDRO3	Prop. Curve SBDRO2	Prop. Curve SBDRO3	Prop. Curve SBDRO4
P.I. STA = 2316+88.94	P.I. STA = 2328+59.71	P.I. STA = 2398+13.58	P.I. STA = 1316+17.76	P.I. STA = 1328+44.90	P.I. STA = 1397+75.78
N = 1,853,051.58	N = 1,854,218.69	N = 1,861,170.38	N = 1,852,997.25	N = 1,854,220.54	N = 1,861,149.16
E = 1,177,504.84	E = 1,177,410.58	E = 1,177,231.19	E = 1,177,445.02	E = 1,177,346.22	E = 1,177,163.97
$\Delta = 2^\circ 58' 38.60''$ (LT)	$\Delta = 3^\circ 16' 48.34''$ (RT)	$\Delta = 44^\circ 36' 17.12''$ (LT)	$\Delta = 2^\circ 58' 38.60''$ (LT)	$\Delta = 3^\circ 16' 11.04''$ (RT)	$\Delta = 44^\circ 32' 58.56''$ (LT)
D = $0^\circ 29' 58.77''$	D = $0^\circ 30' 01.44''$	D = $2^\circ 44' 29.13''$	D = $0^\circ 30' 08.86''$	D = $0^\circ 30' 28.59''$	D = $2^\circ 47' 41.70''$
R = 11,467.00	R = 11,450.00	R = 2,090.00	R = 11,403.00	R = 11,280.00	R = 2,050.00
L = 595.89	L = 655.49	L = 1,627.06	L = 592.56	L = 643.72	L = 1,593.95
E = 3.87	E = 4.69	E = 168.99	E = 3.85	E = 4.59	E = 165.31
T = 298.01	T = 327.84	T = 857.27	T = 296.35	T = 321.95	T = 839.71
P.C. STA = 2313+90.93	P.C. STA = 2325+31.88	P.C. STA = 2389+56.30	P.C. STA = 1313+21.41	P.C. STA = 1325+22.95	P.C. STA = 1389+36.07
N = 1,852,753.69	N = 1,853,891.91	N = 1,860,313.48	N = 1,852,701.02	N = 1,853,899.63	N = 1,860,309.83
E = 1,177,513.37	E = 1,177,436.97	E = 1,177,256.19	E = 1,177,453.50	E = 1,177,372.14	E = 1,177,189.29
P.T. STA = 2319+86.82	P.T. STA = 2331+87.37	P.T. STA = 2405+83.37	P.T. STA = 1319+13.97	P.T. STA = 1331+66.67	P.T. STA = 1405+30.02
N = 1,853,348.62	N = 1,854,546.43	N = 1,861,762.92	N = 1,853,292.63	N = 1,854,542.40	N = 1,861,729.54
E = 1,177,480.85	E = 1,177,402.92	E = 1,176,611.65	E = 1,177,421.16	E = 1,177,338.64	E = 1,176,557.11

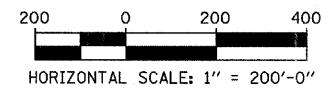
MATCHLINE STA. 1342+00 SB DAN RYAN



PROPOSED SB I-94 (DAN RYAN EXPWY)  
PROPOSED SB I-94 (DAN RYAN EXPWY)  
PROPOSED SB 71st/75th ST. CD RAMP (RAMP 71D75A)

REVISIONS	
NAME	DATE

ILLINOIS DEPARTMENT OF TRANSPORTATION  
F.A.I. 94 (DAN RYAN EXPRESSWAY)  
ALIGNMENT  
SHEET 3 OF 4  
SCALE: 1"=200'  
DATE: JUNE 20, 2008  
DRAWN BY: JPM  
CHECKED BY: DAK



TYLIN INTERNATIONAL

P:\02373\road\220\220a\220a0103.dwg 9/3/2008 9:38:4 AM