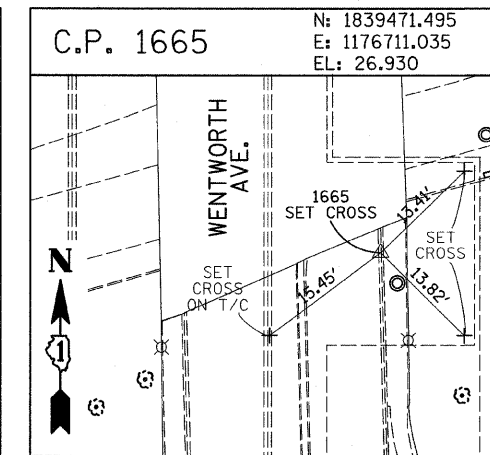
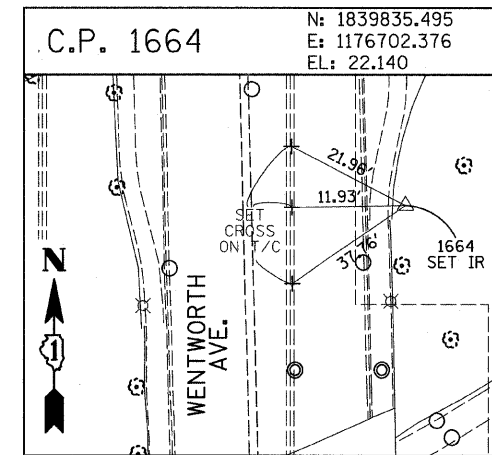
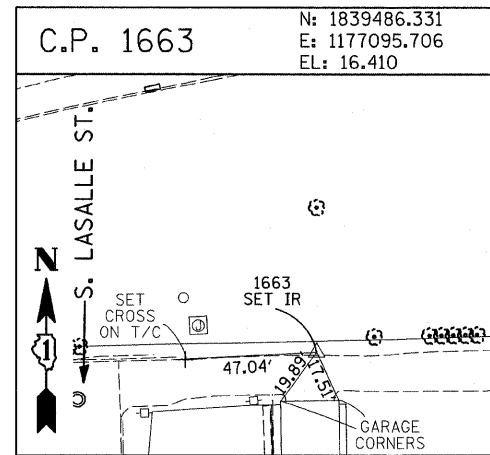
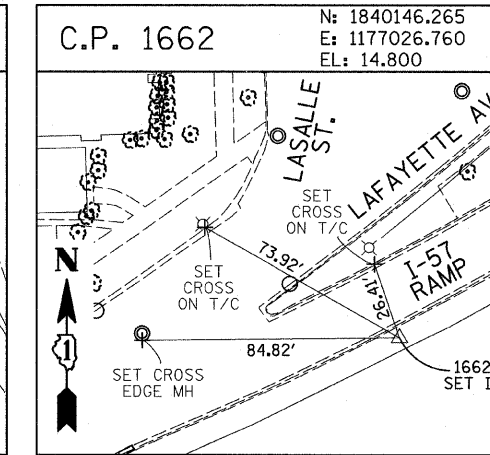
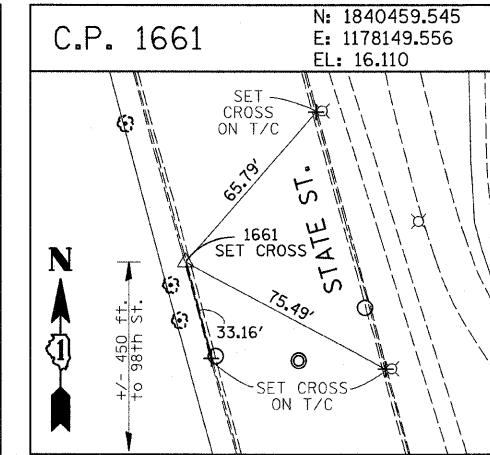
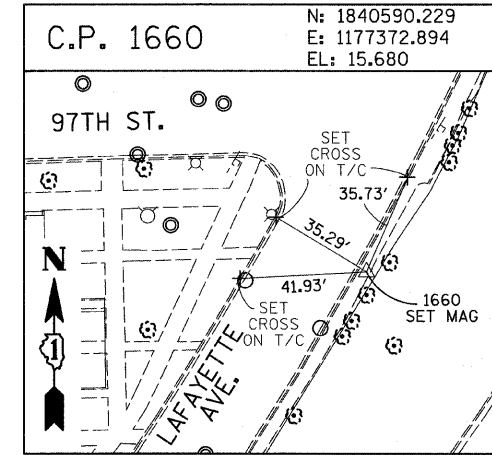
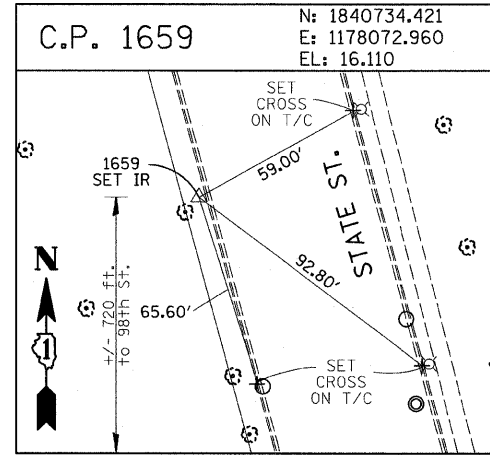
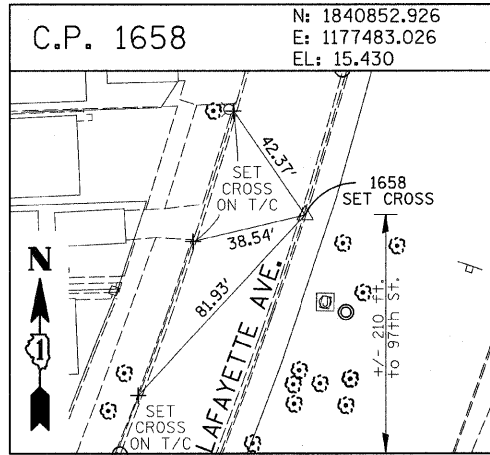
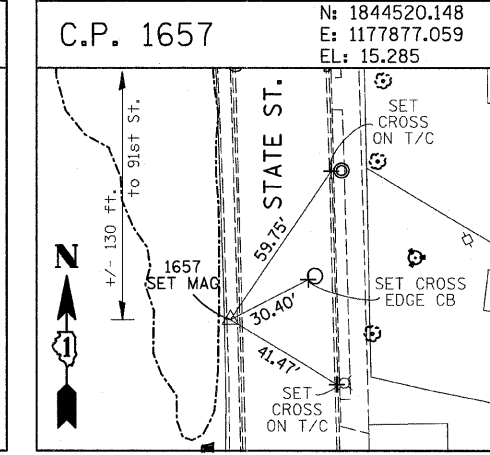
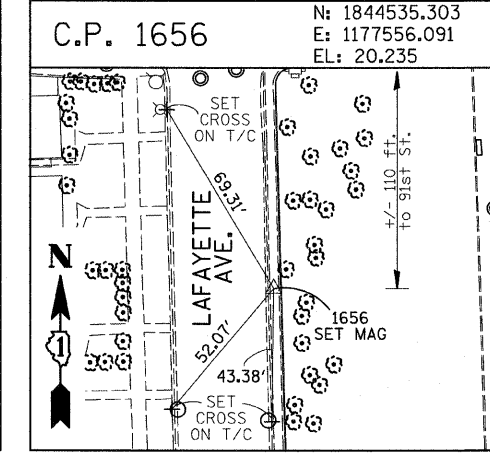
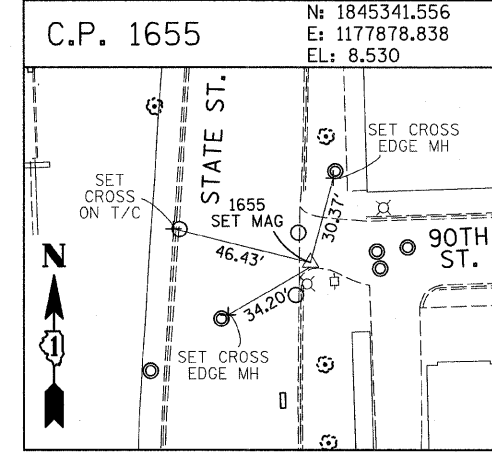
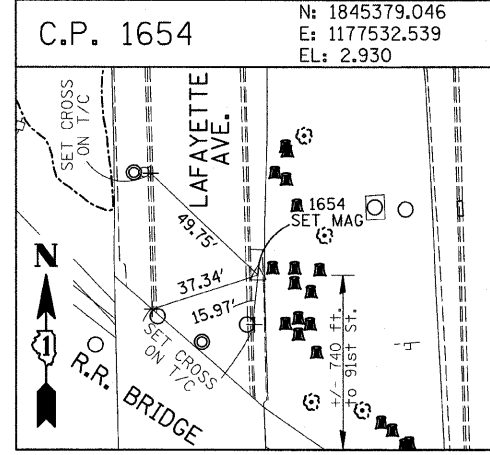
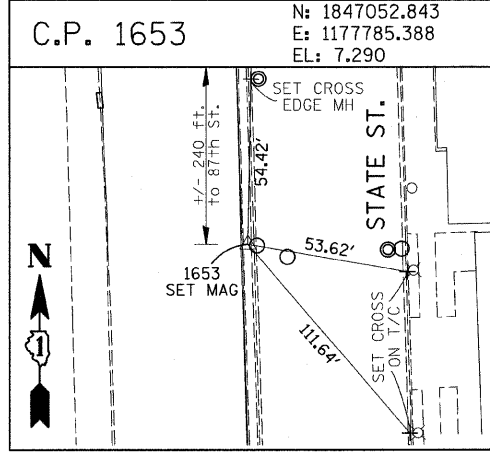
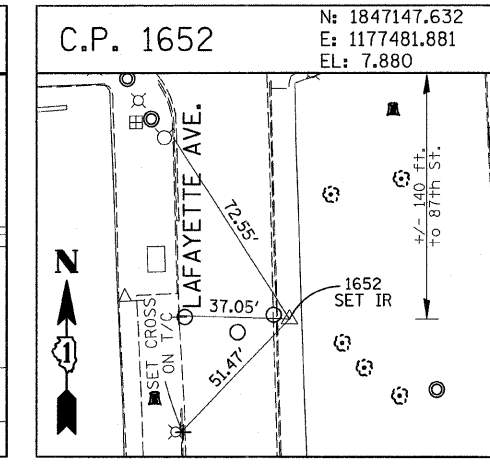
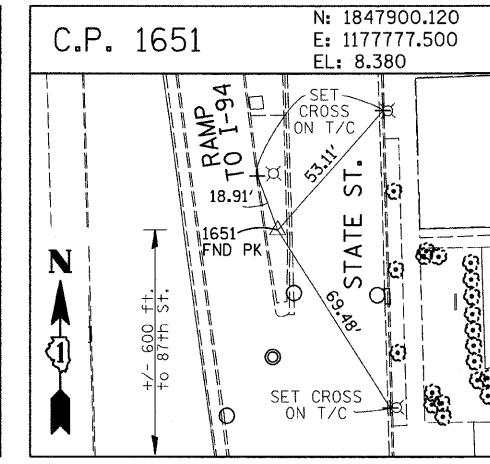
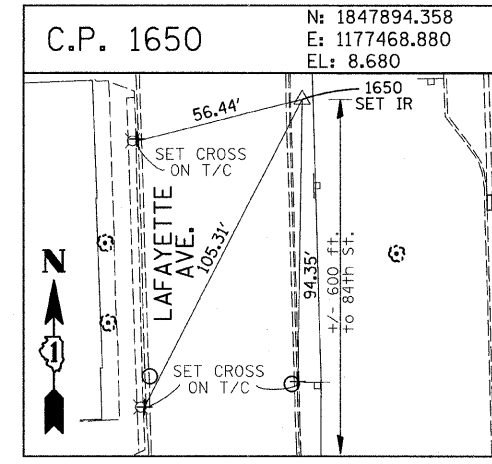
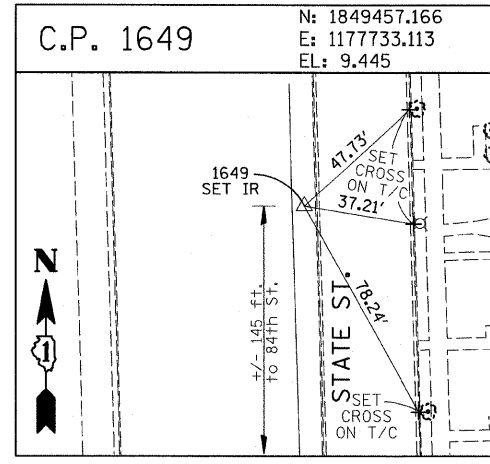
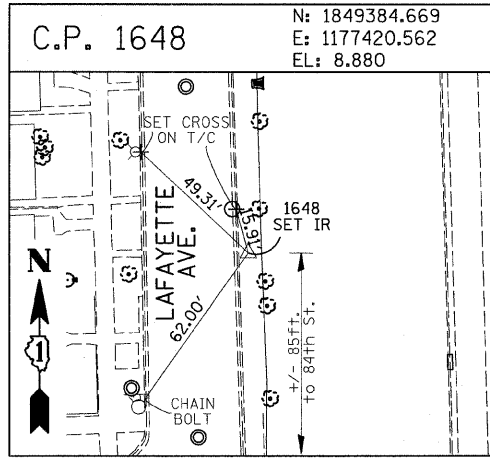


F.A.I. RTE.	SECTION	COUNTY	TOTAL SHEETS	SHEET NO.
94	2005-069 LS	COOK	60	15
STA. 1254+81 (NB I-94) TO STA. 1253+45 (NB I-94)			2253+45 (NB I-94)	
FED. ROAD DIST. NO.			ILLINOIS FED. AID PROJECT	

60A75



American Surveying Consultants, P.C.  
 1877 Plank St., Chicago, IL 60611 800 N. Northwest Highway, Chicago, IL 60611  
 312-224-0231 312-224-0231 773-752-1247

REVISIONS	
NAME	DATE

ILLINOIS DEPARTMENT OF TRANSPORTATION  
 F.A.I. 94 (DAN RYAN EXPRESSWAY)  
 SURVEY TIES FOR CONTROL POINTS  
 SHEET 4 OF 7

SCALE: 1"=30'  
 DATE: JUNE 20, 2008  
 DRAWN BY: GSP  
 CHECKED BY: MMW

P:\0237\3v\road\222\222\1222\08\3b.dgn 9:38:18 AM 6/23/2008