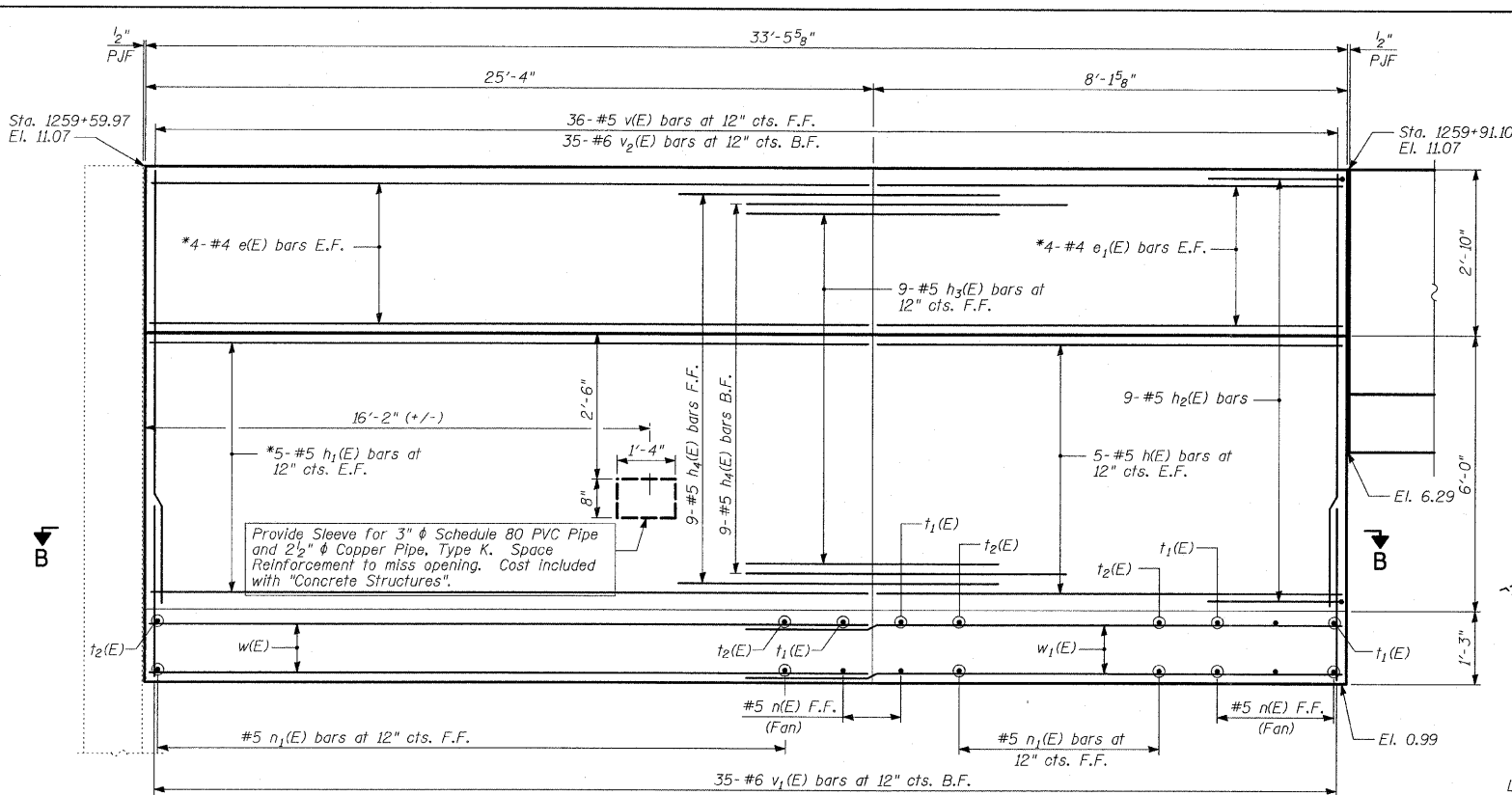


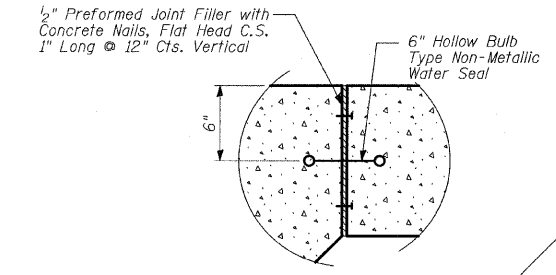
BILL OF MATERIAL

Bar	No.	Size	Length	Shape
e(E)	8	#4	25'-0"	—
e ₁ (E)	8	#4	7'-11"	—
n(E)	10	#5	7'-11"	—
h ₁ (E)	10	#5	25'-0"	—
h ₂ (E)	9	#5	6'-6"	—
h ₃ (E)	9	#5	4'-4"	—
h ₄ (E)	18	#5	5'-7"	—
n(E)	6	#5	8'-2"	—
n ₁ (E)	29	#5	7'-4"	—
t ₁ (E)	5	#6	5'-4"	—
t ₂ (E)	29	#6	4'-6"	—
v(E)	36	#5	8'-8"	—
v ₁ (E)	35	#6	5'-3"	—
v ₂ (E)	35	#6	8'-8"	—
w(E)	10	#5	25'-0"	—
w ₁ (E)	10	#5	10'-4"	—
Reinforcement Bars, Epoxy Coated			POUND	2,670
Porous Granular Embankment			CU YD	89
Structure Excavation			CU YD	67
Concrete Structures			CU YD	20
Protective Coat			SQ YD	30
Rustication Finish			SQ FT	56

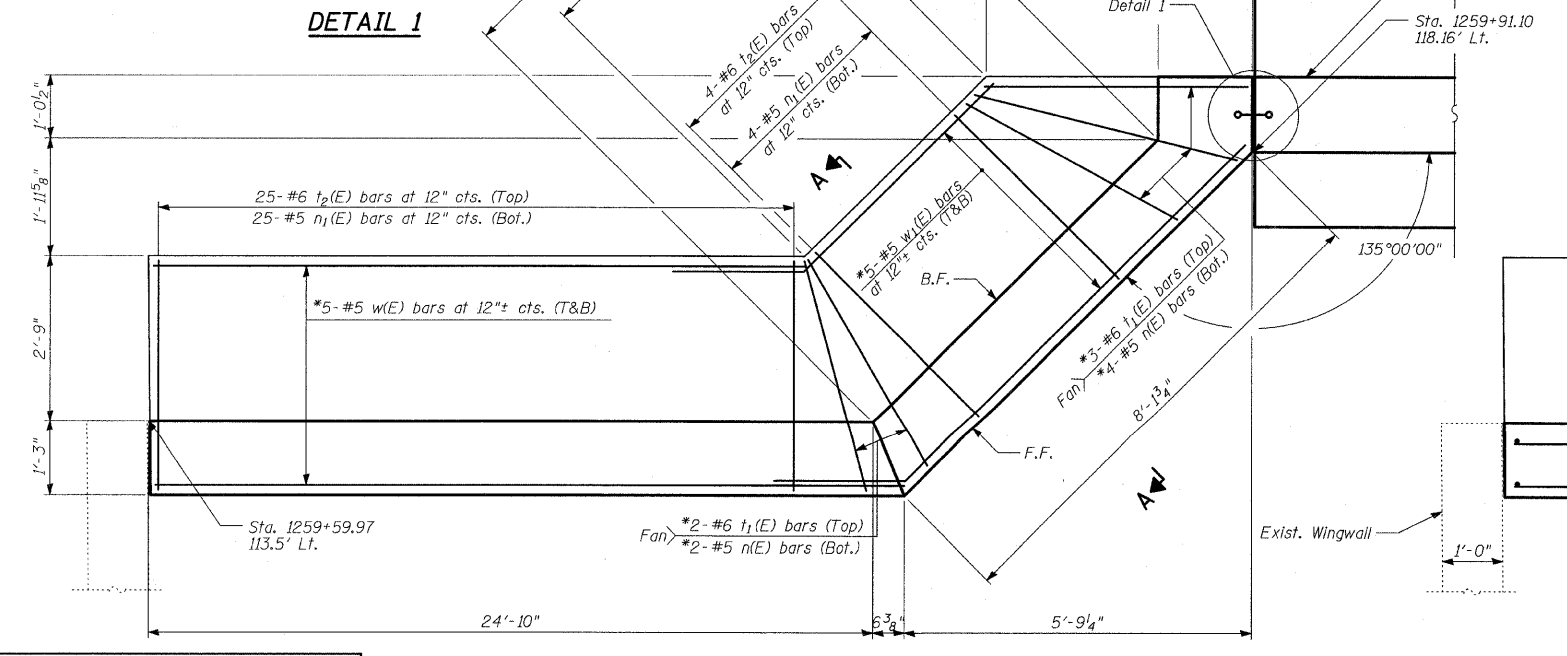
Reinforcement bars designated (E) shall be epoxy coated.



ELEVATION AT FRONT FACE



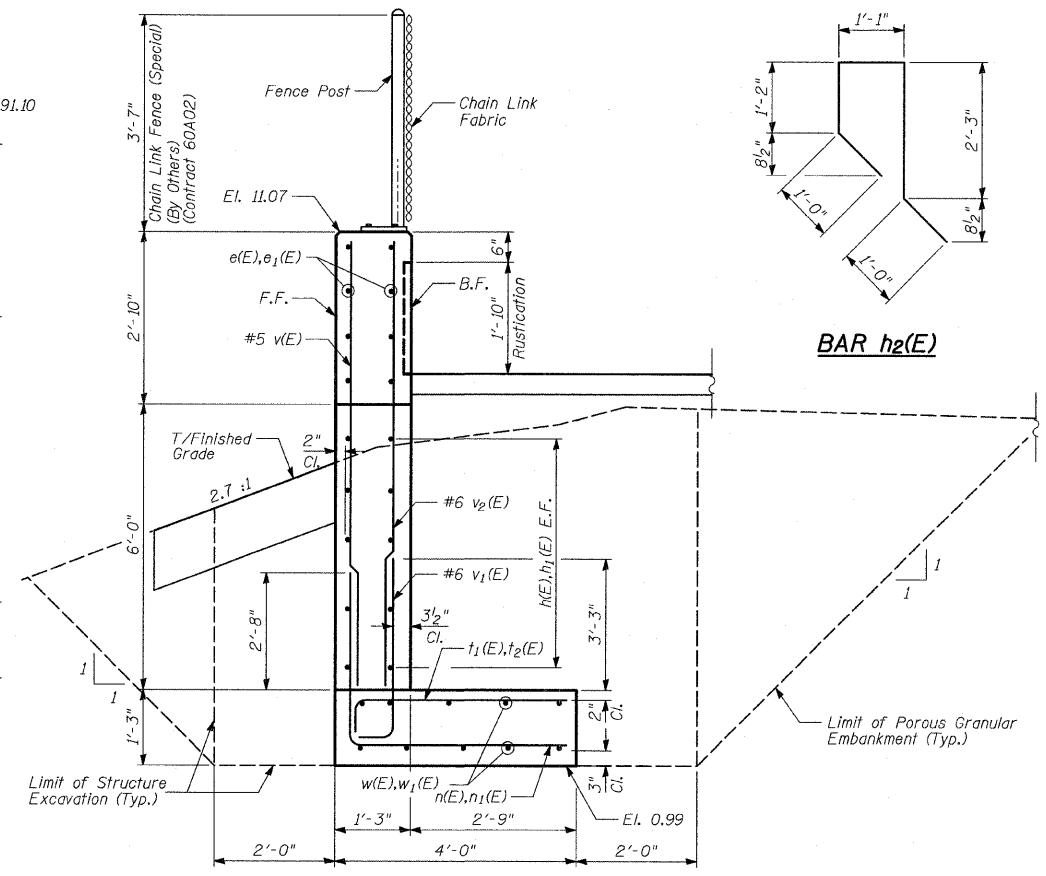
DETAIL 1



FOUNDATION - PLAN
NW Quadrant at 87th Street

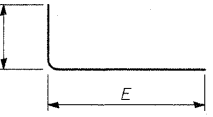
* Cut bars to fit in field

TYLIN INTERNATIONAL



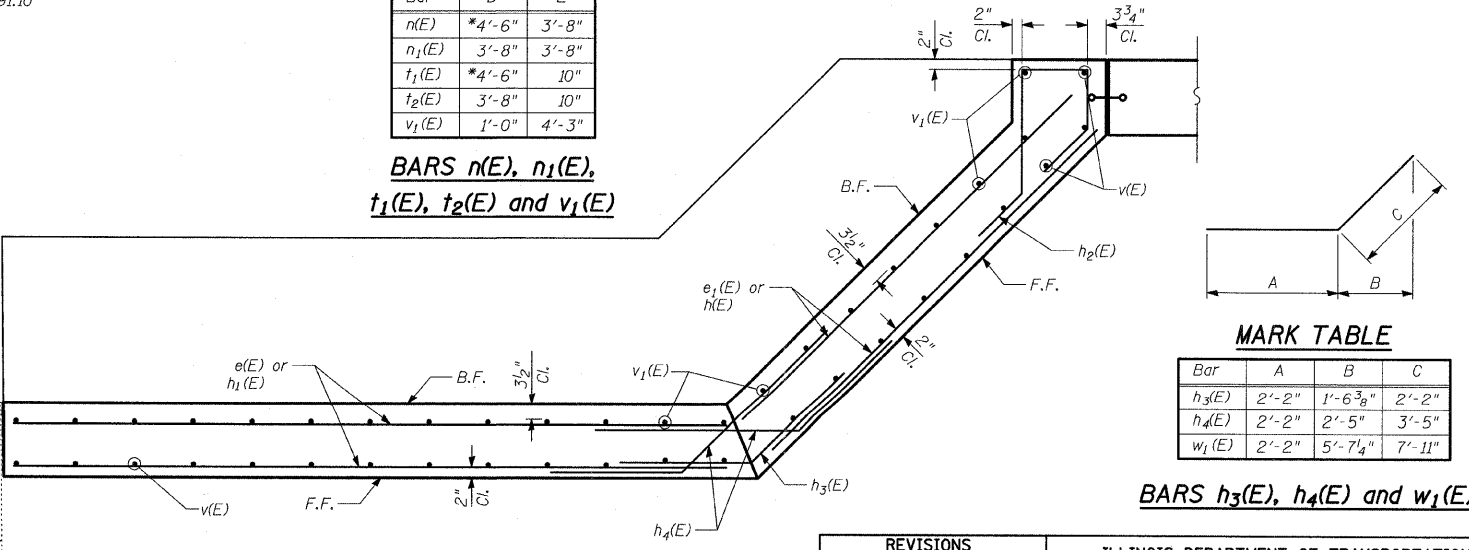
SECTION A-A

Sta. 1259+59.97 to Sta. 1259+78.25



MARK TABLE

BARS n(E), n₁(E), t₁(E), t₂(E) and v₁(E)



SECTION B-B

MARK TABLE

Bar	A	B	C
h ₃ (E)	2'-2"	1'-6 3/8"	2'-2"
h ₄ (E)	2'-2"	2'-5"	3'-5"
w ₁ (E)	2'-2"	5'-7 1/4"	7'-11"

BARS h₃(E), h₄(E) and w₁(E)

LEGEND

E.F. - denotes Each Face
F.F. - denotes Front Face
B.F. - denotes Back Face
T&B - denotes Top and Bottom

REVISIONS	
NAME	DATE

ILLINOIS DEPARTMENT OF TRANSPORTATION
F.A.I. 94 (DAN RYAN EXPRESSWAY)
TYPICAL SECTIONS, ELEVATIONS AND DETAILS - CORNER GARDEN

SCALE: N.T.S. DRAWN BY: MAF
DATE: JUNE 20, 2008 CHECKED BY: PF