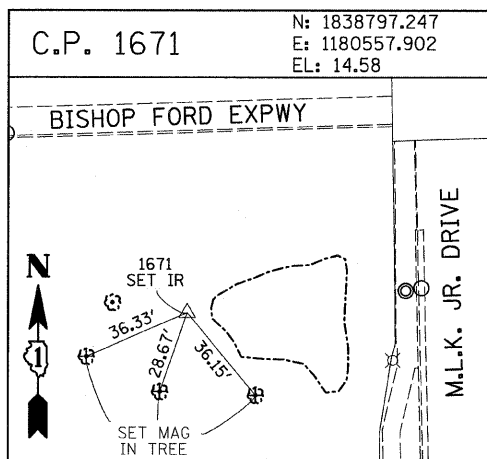
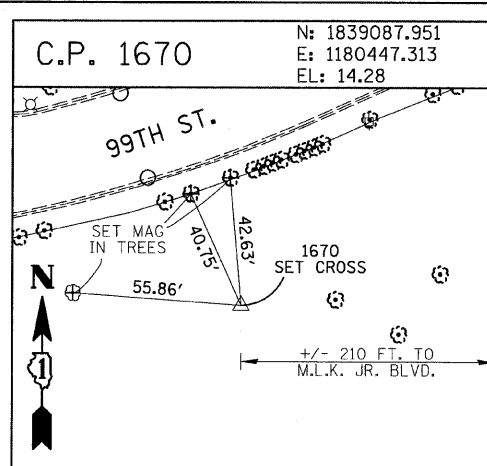
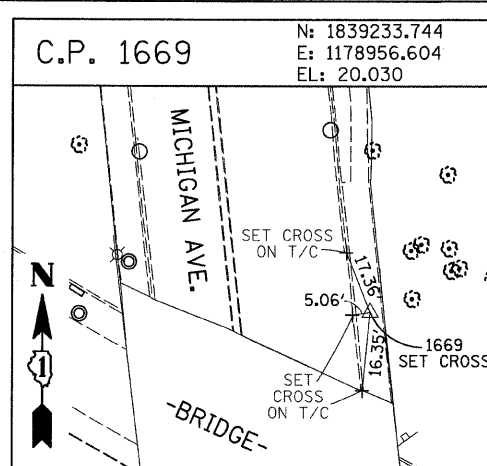
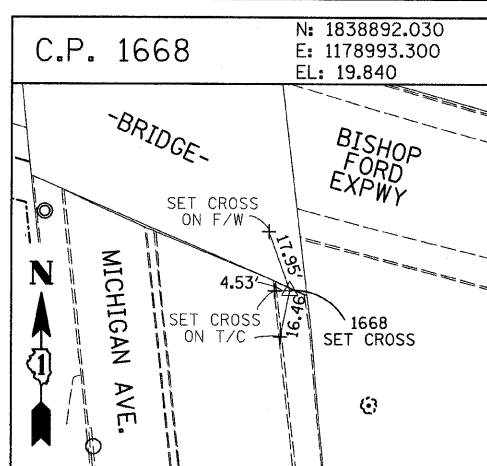
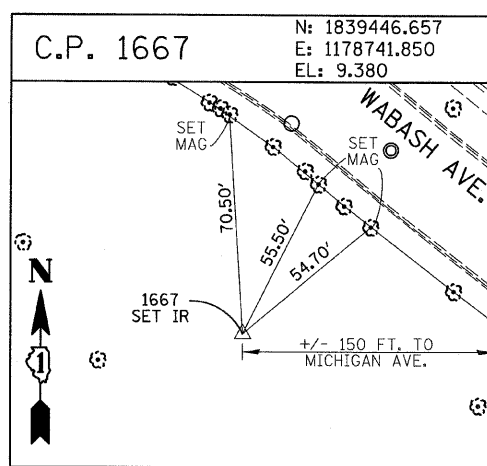
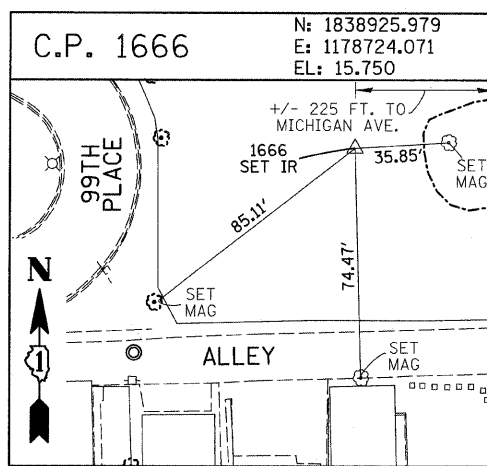


F.A.I. RTE.	SECTION	COUNTY	TOTAL SHEETS	SHEET NO.
94	2005-070 LS	COOK	65	16
STA. 1308+46 (SB I-94)		TO STA. 1318+61 (SB I-94)		
FED. ROAD DIST. NO.		ILLINOIS		FED. AID PROJECT

60A76



PROJECT BENCHMARKS

- BM 2231 ELEVATION= 10.24 FEET
SET CROSS ON CHAIN BOLT OF FIRE HYDRANT ON THE SOUTHWEST CORNER OF 71ST STREET AND LAFAYETTE AVENUE.
- BM 2232 ELEVATION= 8.46 FEET
SET CROSS ON CHAIN BOLT OF FIRST FIRE HYDRANT SOUTH OF 73RD STREET ON THE WEST SIDE OF LAFAYETTE AVENUE. APPROXIMATELY 330 FEET SOUTH OF 73RD STREET.
- BM 2233 ELEVATION= 9.90 FEET
SET CROSS ON NORTHWEST BOLT OF FIRE HYDRANT ON THE NORTHWEST CORNER OF 75TH STREET AND LAFAYETTE AVENUE.
- BM 2234 ELEVATION= 9.56 FEET
SET CROSS ON CHAIN BOLT OF FIRST FIRE HYDRANT SOUTH OF 75TH STREET ON THE WEST SIDE OF LAFAYETTE AVENUE. APPROXIMATELY 320 FEET SOUTH OF 75TH STREET.
- BM 2235 ELEVATION= 7.50 FEET
SET CROSS ON CHAIN BOLT OF FIRST FIRE HYDRANT SOUTH OF 76TH STREET ON THE WEST SIDE OF LAFAYETTE. APPROXIMATELY 330 FEET SOUTH OF 76TH STREET.
- BM 2236 ELEVATION= 10.41 FEET
SET CROSS ON WEST BOLT OF FIRE HYDRANT ON THE SOUTHWEST CORNER OF 79TH STREET AND LAFAYETTE AVENUE.
- BM 2237 ELEVATION= 9.20 FEET
SET CROSS ON CHAIN BOLT OF FIRST FIRE HYDRANT NORTH OF 83RD STREET ON THE WEST SIDE OF LAFAYETTE AVENUE. APPROXIMATELY 350 FEET NORTH OF 83RD STREET.
- BM 2238 ELEVATION= 10.04 FEET
SET CROSS ON CHAIN BOLT OF FIRE HYDRANT OF THE NORTHWEST CORNER OF 4TH STREET AND LAFAYETTE AVENUE.
- BM 2239 ELEVATION= 9.59 FEET
SET CROSS ON CHAIN BOLT OF SECOND FIRE HYDRANT NORTH OF 87TH STREET ON THE WEST SIDE OF LAFAYETTE AVENUE. APPROXIMATELY 720 FEET NORTH OF 87TH STREET.
- BM 2240 ELEVATION= 9.49 FEET
SET CROSS ON THE NORTHWEST BOLT OF FIRE HYDRANT ON THE SOUTHWEST CORNER OF 78TH STREET AND LAFAYETTE AVENUE.
- BM 2241 ELEVATION= 3.63 FEET
SET SQUARE CUT ON TOP OF CURB NEXT TO LIGHT POLE ON THE NORTHWEST CORNER OF LAFAYETTE AVENUE AND RAILROAD BRIDGE. APPROXIMATELY 770 FEET NORTH OF 91ST STREET.
- BM 2242 ELEVATION= 22.82 FEET
SET CROSS ON CHAIN BOLT OF FIRE HYDRANT ON THE SOUTHWEST CORNER OF 91ST STREET AND LAFAYETTE AVENUE.
- BM 2243 ELEVATION= 15.68 FEET
SET SQUARE CUT ON THE TOP OF CURB NEXT TO THIRD LIGHT POLE NORTH OF 97TH STREET ON THE WEST SIDE OF LAFAYETTE AVENUE. APPROXIMATELY 260 FEET NORTH OF 97TH STREET.
- BM 2244 ELEVATION= 15.94 FEET
SET SQUARE CUT ON TOP OF CURB NEXT TO LIGHT POLE ON THE NORTH SIDE OF 98TH STREET. APPROXIMATELY 120 FEET EAST OF WENTWORTH AVENUE.

- BM 2245 ELEVATION= 16.35 FEET
SET SQUARE CUT ON THE EAST END OF CURB AT THE NORTHEAST CORNER OF FIRST ALLEY NORTH OF 99TH STREET. APPROXIMATELY 35 FEET EAST OF LASALLE STREET.
- BM 2246 ELEVATION= 20.00 FEET
SET SQUARE CUT WITH CROSS ON TOP OF ABUTMENT WALL ON THE NORTHWEST CORNER OF STATE STREET BRIDGE OVER THE BISHOP FORD EXPRESSWAY. APPROXIMATELY 20 FEET NORTH OF THE NORTH EDGE OF THE BRIDGE.
- BM 2248 ELEVATION= 9.77 FEET
SET CROSS ON CHAIN BOLT OF FIRST FIRE HYDRANT NORTH OF RAILROAD BRIDGE ON THE EAST SIDE OF STATE STREET. APPROXIMATELY 110 FEET SOUTH OF 90TH STREET.
- BM 2249 ELEVATION= 9.67 FEET
SET CROSS ON CHAIN BOLT OF FIRE HYDRANT ON THE NORTHWEST CORNER OF 87TH AND STATE STREET.
- BM 2250 ELEVATION= 10.03 FEET
SET CROSS ON CHAIN BOLT OF FIRE HYDRANT ON THE NORTHWEST CORNER OF 83RD ST. AND STATE STREET.
- BM 2251 ELEVATION= 10.95 FEET
FOUND CROSS ON EAST BOLT OF FIRE HYDRANT ON THE EAST SIDE OF STATE STREET. APPROXIMATELY 135 FEET NORTH OF 79TH STREET.
- BM 2252 ELEVATION= 10.02 FEET
SET CROSS ON WEST BOLT OF FIRE HYDRANT ON THE NORTHWEST CORNER OF STATE STREET AND 76TH STREET.
- BM 2254 ELEVATION= 9.17 FEET
SET CROSS ON CHAIN BOLT OF FIRST FIRE HYDRANT SOUTH OF 73RD STREET ON THE EAST SIDE OF STATE STREET. APPROXIMATELY 330 FEET SOUTH OF 73RD STREET.
- BM 2255 ELEVATION= 11.25 FEET
SET CROSS ON CHAIN BOLT OF FIRE HYDRANT ON THE NORTHWEST CORNER OF 71ST STREET AND STATE STREET.
- BM 2256 ELEVATION= 16.36 FEET
SET SQUARE CUT ON TOP OF ABUTMENT WALL ON THE NORTHWEST CORNER OF MARTIN LUTHER KING DRIVE BRIDGE OVER THE BISHOP FORD EXPRESSWAY. APPROXIMATELY 1 FOOT NORTH OF THE NORTH END OF THE BRIDGE.
- BM 2257 ELEVATION= 18.25 FEET
SET CROSS ON NORTHEAST BOLT OF LIGHT POLE BASE ON THE EAST SIDE OF STATE STREET. APPROXIMATELY 970 FEET SOUTH OF 95TH STREET.
- BM 2258 ELEVATION= 10.53 FEET
SET CROSS ON NORTHWEST BOLT OF LIGHT BASE ON NORTHWEST CORNER OF 71ST STREET AND LAFAYETTE AVENUE.

REVISIONS	
NAME	DATE