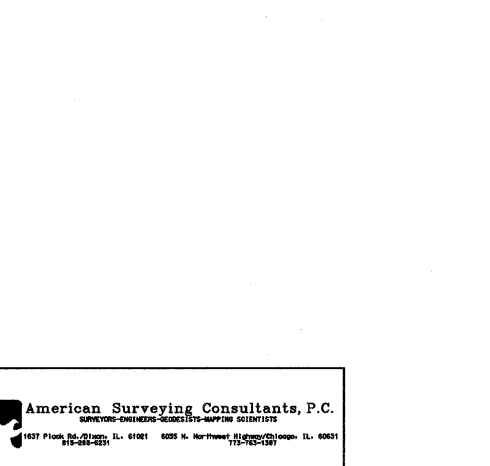
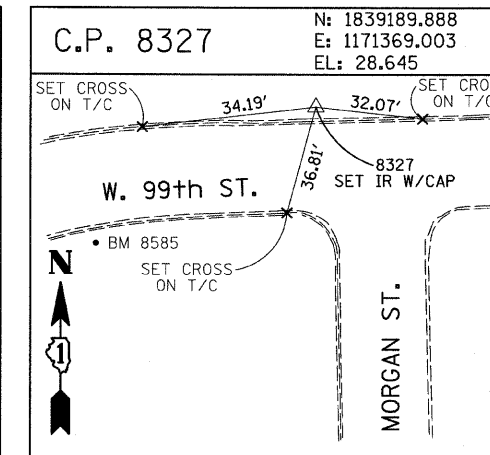
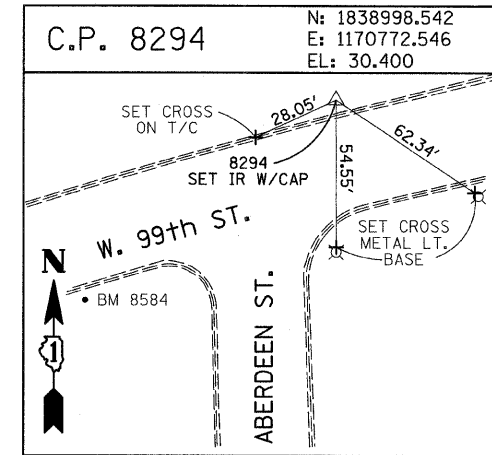
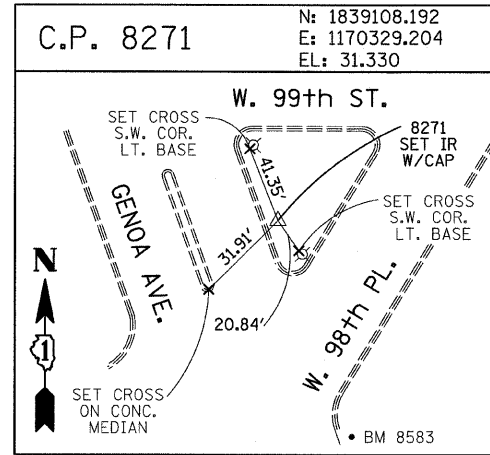
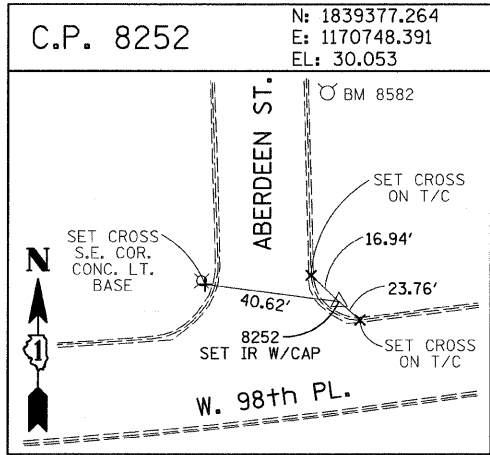
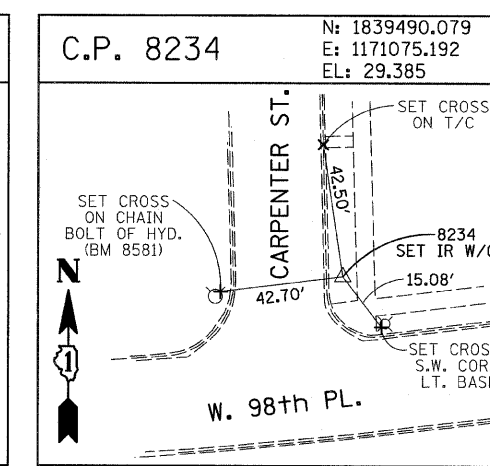
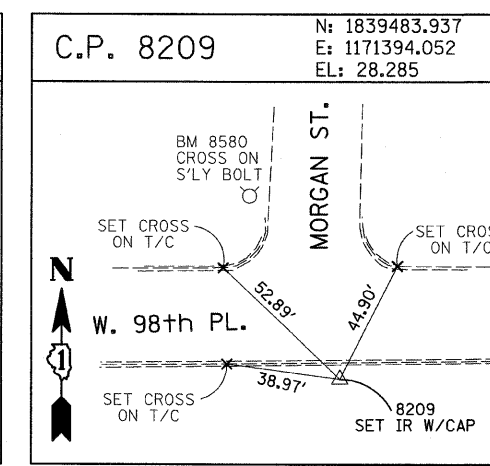
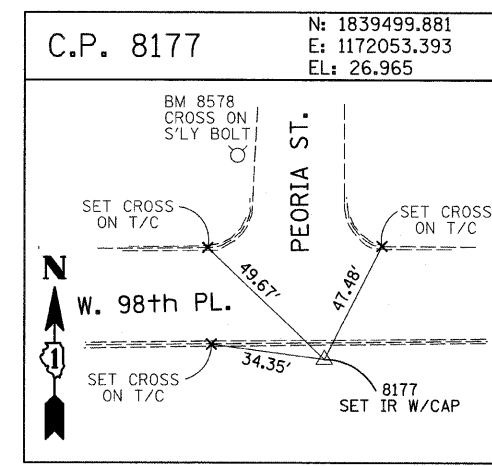
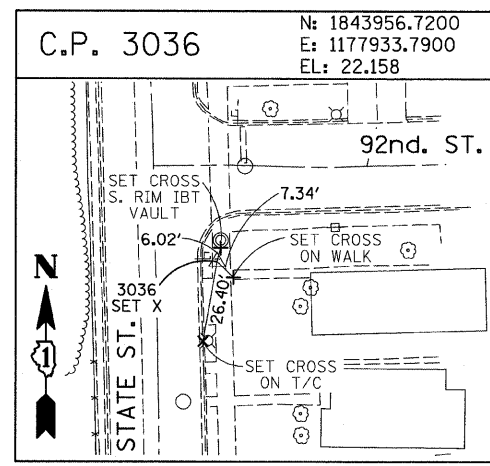
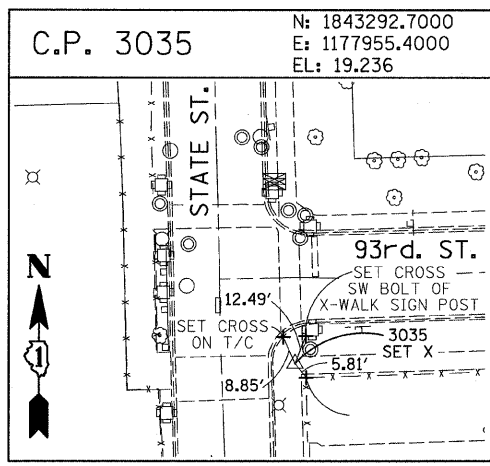
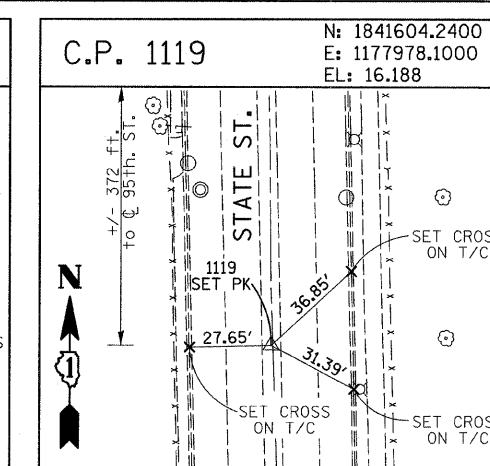
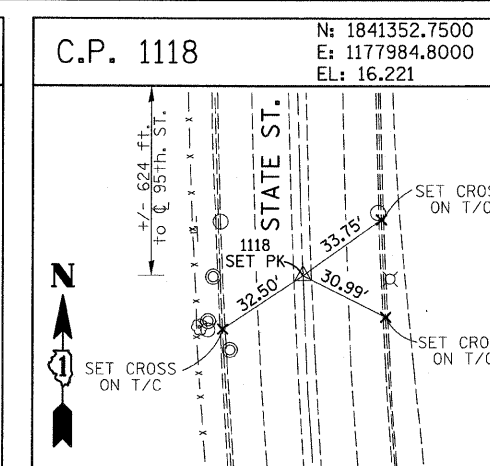
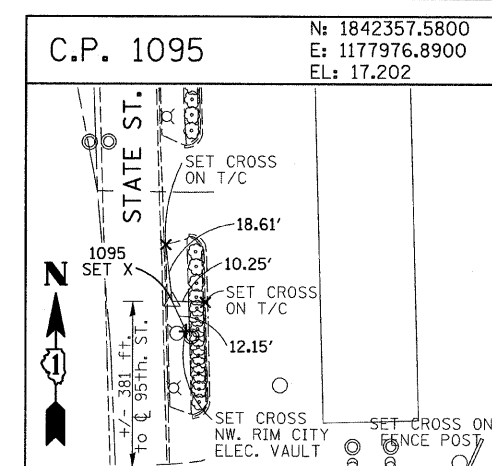
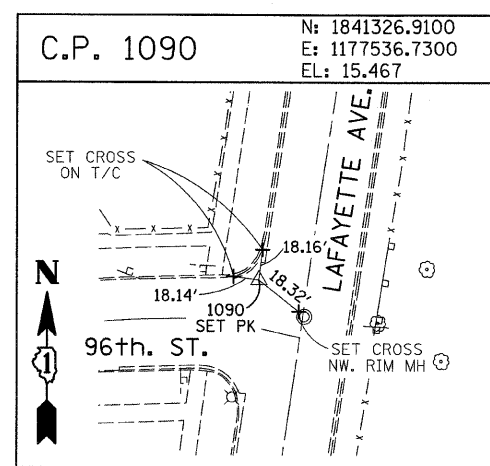
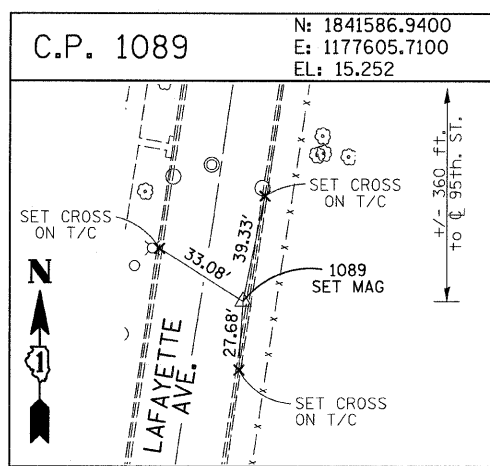


F.A.I. RTE.	SECTION	COUNTY	TOTAL SHEETS	SHEET NO.
94	2005-070 LS	COOK	65	17
STA. 1308+46 (SB 1-34)		TO STA. 1318+61 (SB 1-94)		
FED. ROAD DIST. NO.		ILLINOIS FED. AID PROJECT		

60A76



American Surveying Consultants, P.C.
 1571 Piquette Rd., Chicago, IL 60611 6025 N. Northwood, Chicago, IL 60631

REVISIONS	
NAME	DATE

ILLINOIS DEPARTMENT OF TRANSPORTATION
 F.A.I. 94 (DAN RYAN EXPRESSWAY)
 SURVEY TIES FOR CONTROL POINTS
 SHEET 6 OF 7
 SCALE: 1"=30'
 DATE: MAY 1, 2008
 DRAWN BY: GSP
 CHECKED BY: MMW

6/10/06 PM 4/29/2008