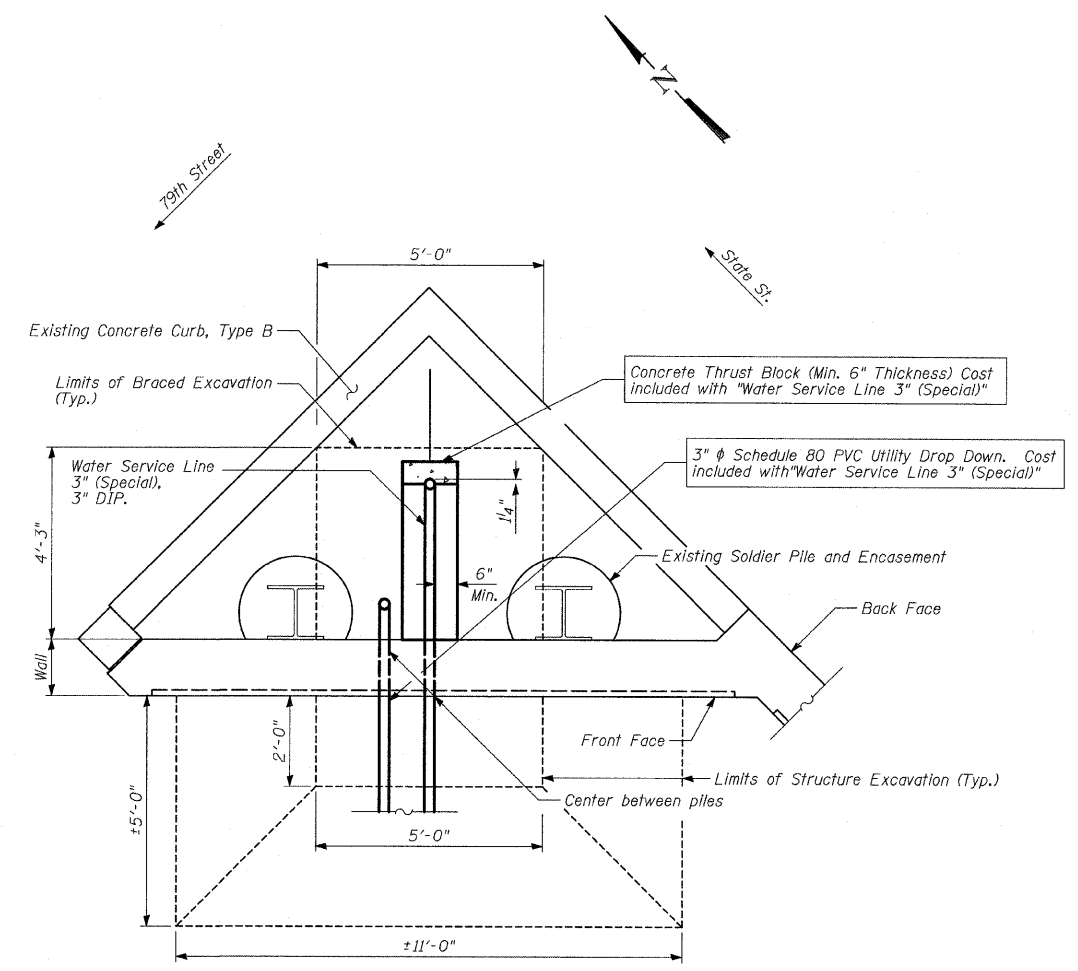

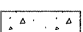


ELEVATION - WATER SERVICE & ELECTRICAL LINES AT SOLDIER PILE RETAINING WALL #10 (BETWEEN PILES)
(79th Street)



PLAN - WATER SERVICE & ELECTRICAL LINES AT SOLDIER PILE RETAINING WALL
(79th Street)

LEGEND

-  Porous Granular Embankment
-  Portland Cement Concrete

TYLIN INTERNATIONAL

BILL OF MATERIAL

ITEM	UNIT	TOTAL
Porous Granular Embankment	CU YD	10
Structure Excavation	CU YD	7
Braced Excavation	CU YD	10
Water Service Line 3" (Special)	FOOT	15

REVISIONS	
NAME	DATE

ILLINOIS DEPARTMENT OF TRANSPORTATION
F.A.I. 94 (DAN RYAN EXPRESSWAY)
GATEWAY AND CORNER GARDEN UTILITY DROP DOWN DETAILS
SCALE: N.T.S. DRAWN BY: MAF
DATE: MAY 1, 2008 CHECKED BY: DAK