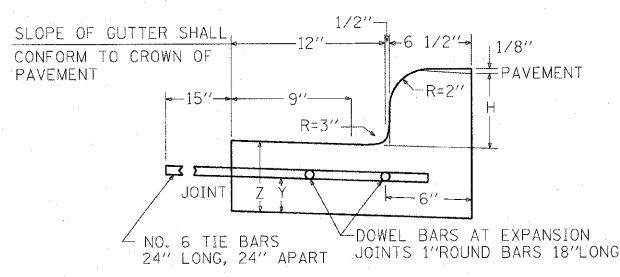


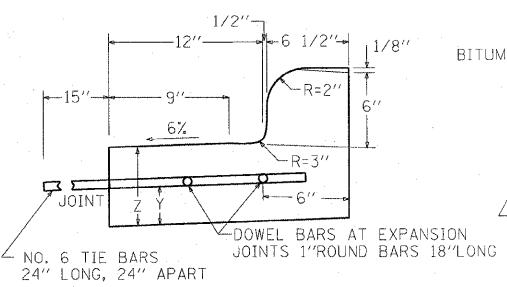
**DETAILS OF P.C.C. CURB, GUTTER,  
COMBINED CURB & GUTTER, MODIFIED CURB & GUTTER**

NOTE: H = VARIABLE (SEE PLAN) WHERE H EXCEEDS 12". USE SPECIAL TYPE OF C.C.&G  
SEE CONSTRUCTION DETAILS (FOR MISCELLANEOUS STRUCTURES)  
X = THICKNESS OF PAVEMENT  
Y = ONE HALF THE THICKNESS OF CONCRETE PAVEMENT OR CONCRETE BASE.  
Z = 10" OR THICKNESS OF PAVEMENT - WHICHEVER IS GREATER

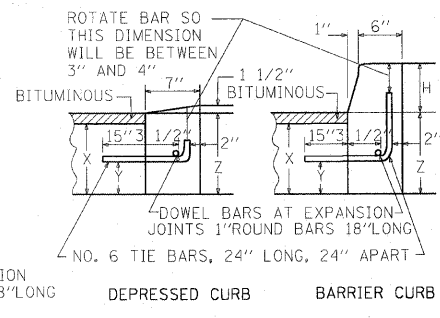
**TYPE BV.12 OR  
TYPE 3 CURB & GUTTER**



**TYPE B6.12 MOD**



**TYPE B OR TYPE 4 CURB**



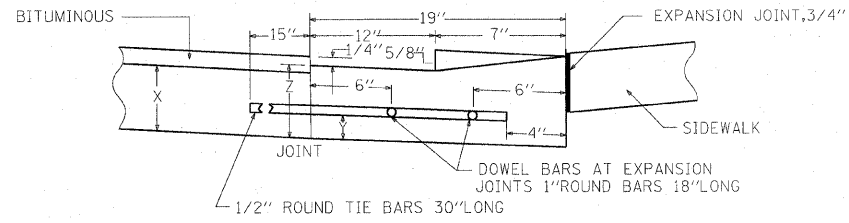
**JOINTS IN CURB, GUTTER, COMBINED CURB & GUTTER**

CONTRACTION JOINTS SHALL ALSO BE PLACED BETWEEN THESE EXPANSION JOINTS AT DISTANCES NOT EXCEEDING 20 FEET.  
ALL TIE BARS SHALL BE CORRUGATED- ALL DOWEL BARS SHALL BE SMOOTH.  
AND COMBINED CURB & GUTTER IN PROLONGATION WITH THE JOINTS IN THE PAVEMENT. THE DETAILS OF THE TRANSVERSE JOINTS IN THE CURB, GUTTER AND COMBINED CURB & GUTTER SHALL BE APPROVED BY THE ENGINEER. CURB, GUTTER OR COMBINED CURB & GUTTER IS CONSTRUCTED ADJACENT TO A FLEXIBLE BASE PAVEMENT, 1" THICK EXPANSION JOINTS COMPOSED OF BITUMINOUS PREFORMED JOINT FILLER SHALL BE INSTALLED IN THE CURB AND/OR GUTTER AT POINTS OF CURVATURE AND AT CONSTRUCTION JOINTS. TRANSVERSE JOINTS OF A TYPE SIMILAR TO THAT USED IN THE ADJACENT PAVEMENT SHALL BE INSTALLED IN THE CURB, GUTTER

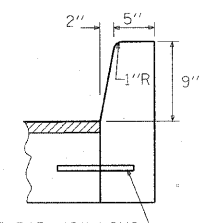
**BASIS OF PAYMENT**

THE COST OF ALL JOINTS, TIE BARS, INCLUDING LABOR, FURNISHING AND PLACING OF STEEL, FILLER AND ALL OTHER INCIDENTALS SHALL BE INCLUDED IN THE UNIT PRICES BID FOR TYPE B-V.12 OR TYPE 3 COMBINED CONCRETE CURB AND GUTTER, TYPE 4 OR TYPE B CONCRETE CURB OR ANY SPECIFIED SPECIAL TYPE OF CURB, GUTTER OR CURB AND GUTTER UNLESS OTHERWISE SPECIFIED.

**DEPRESSED CURB & GUTTER**



IF NO ITEM IS PROVIDED FOR DEPRESSED CURB AND GUTTER, IT WILL BE PAID FOR AS TYPE B-V.12 OR TYPE 3 COMBINATION CONCRETE CURB AND GUTTER.



**CONCRETE CURB  
TYPE B (SPECIAL)**

**MOUNTABLE CURB GENERAL NOTES**

LONGITUDINAL JOINT TIE BARS SHALL BE NO. 6 AT 24" CENTERS IN ACCORDANCE WITH DETAILS FOR LONGITUDINAL CONSTRUCTION JOINT SHOWN ON STANDARD 420001.

CONTRACTOR SHALL FOLLOW STANDARD 606001 FOR GENERAL NOTES AND PROCEDURES.

| REVISIONS |      | ILLINOIS DEPARTMENT OF TRANSPORTATION<br>F.A.I. 90/94 (DAN RYAN EXPRESSWAY)<br>63RD STREET GATEWAY LANDSCAPING AND IRRIGATION |
|-----------|------|---|
| NAME      | DATE |   |
|           |      | CONSTRUCTION DETAILS<br>CURB AND GUTTER DETAILS   |
|           |      |   |
|           |      |   |
|           |      |   |
|           |      |   |
|           |      |   |
|           |      |   |
|           |      |   |
|           |      |   |
|           |      |   |

p:\p4046\c\m\29-gateway\_illustrations\m\27 63rd\mcc270052a.dwg