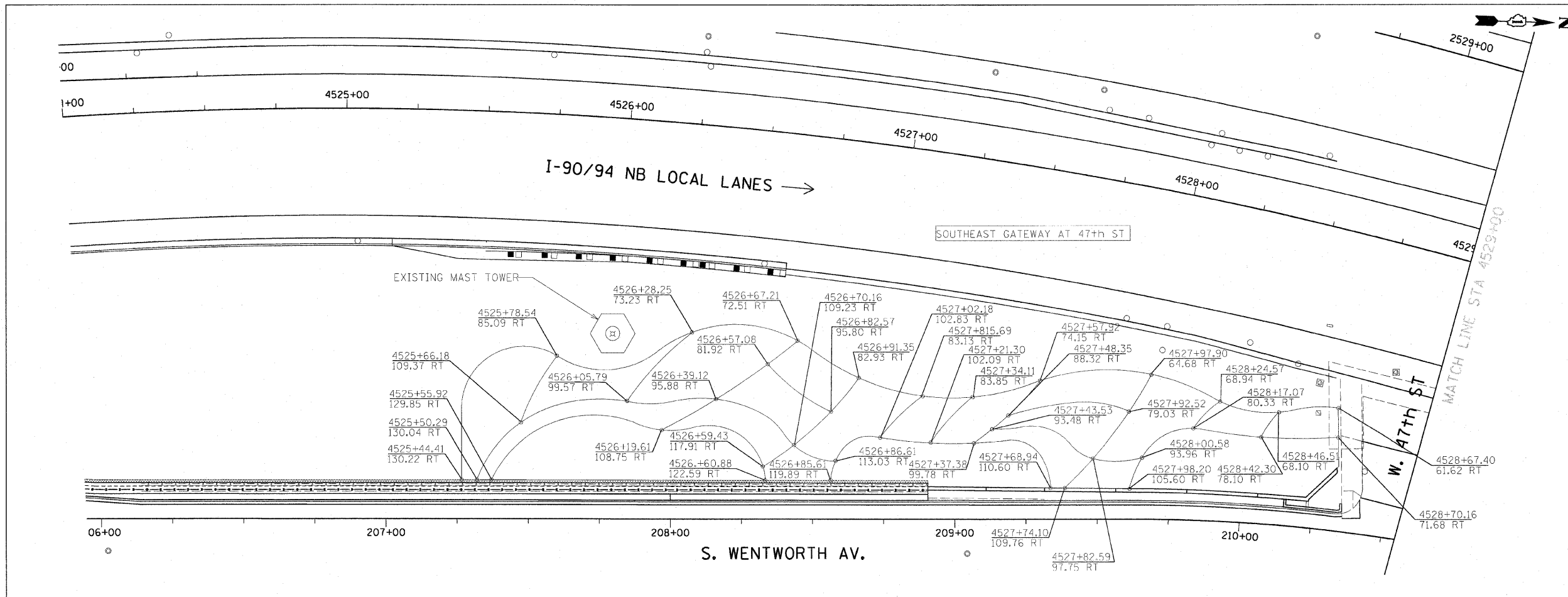
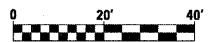
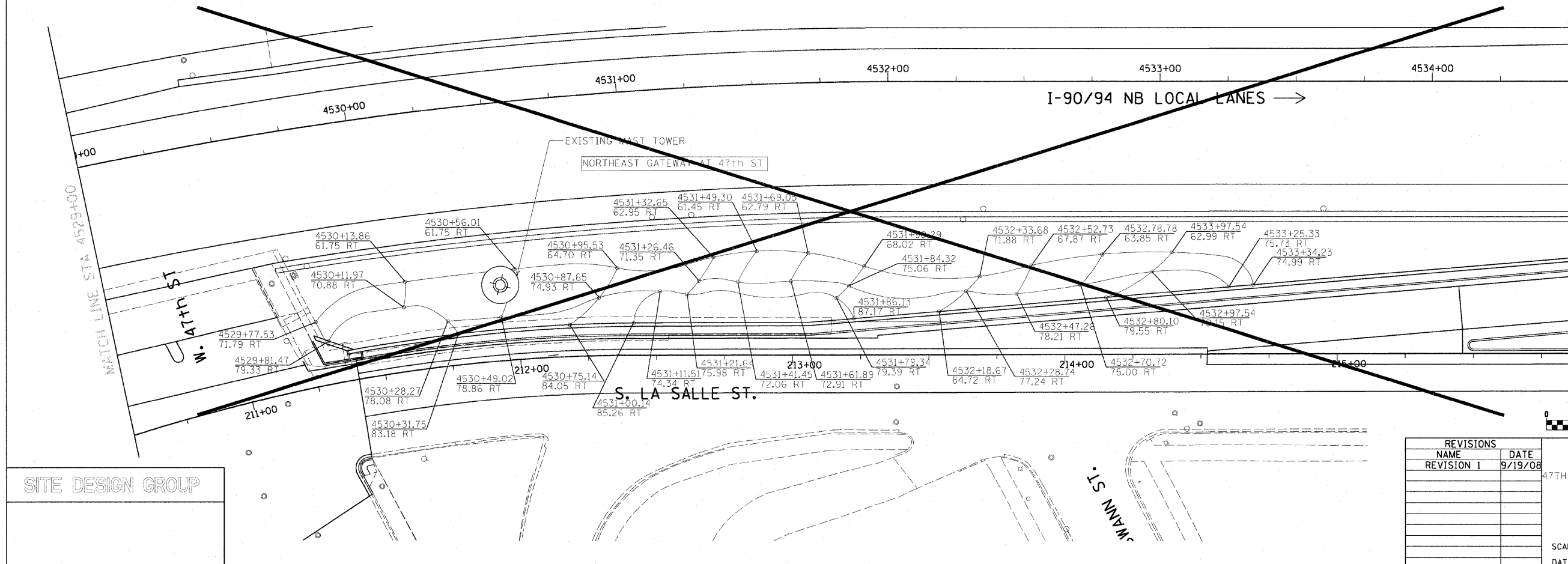


F.A.I. RTE.	SECTION	COUNTY	TOTAL SHEETS	SHEET NO.
90/94	2005-072 LS	COOK	38	27
STA. 4524+00	TO STA. 4534+50			
FED. ROAD DIST. NO. 1		ILLINOIS	FED. AID PROJECT	
60A78				



X NOT INCLUDED IN THIS CONTRACT

NOTE: THE LOCATION OF ALL PLANT MATERIAL SHALL BE STAKED BY CONTRACTOR FOR APPROVAL BY ENGINEER IN FIELD, PRIOR TO INSTALLATION. INDIVIDUAL TREES SHALL BE STAKED WITH IDENTITIES WRITTEN ON STAKES. SHRUB AND PERENNIAL BEDS SHALL BE OUTLINED WITH STAKES AND PAINTED LINES.



REVISIONS	
NAME	DATE
REVISION 1	9/19/08

ILLINOIS DEPARTMENT OF TRANSPORTATION
F.A.I. 90/94 (DAN RYAN EXPRESSWAY)
 47TH STREET GATEWAY LANDSCAPING AND IRRIGATION
 PLANTING BED LAYOUT PLANS

SCALE: 1"=20'
 DATE: May 2, 2008

DRAWN BY: EM
 CHECKED BY: JO

SITE DESIGN GROUP

D:\P40468\WIN29-gateway_irrigations.dwg 08/09/08 asag Files 6:62:47 AM 27 60A78